

**Red Dog Mine
Total Suspended Particulates, Lead and Zinc Concentrations
January 1, 2006 to December 31, 2006**

Red Dog Mine Site

May 2007



Teck Cominco Alaska Incorporated
3105 Lakeshore Drive
Building A, Suite 101
Anchorage, Alaska 99517

Table of Contents

Background	1
Monitoring Program	1
Sample Results.....	3
Results Summary	3

List of Tables

Table 1: Quarterly and Annual Averages	4
Table 2: Monthly Minimum, Maximum, and Averages	5
Table 3: Daily Sample Results January 2006	6
Table 4: Daily Sample Results February 2006	7
Table 5: Daily Sample Results March 2006	8
Table 6: Daily Sample Results April 2006	9
Table 7: Daily Sample Results May 2006	10
Table 8: Daily Sample Results June 2006	11
Table 9: Daily Sample Results July 2006	12
Table 10: Daily Sample Results August 2006	13
Table 11: Daily Sample Results September 2006	14
Table 12: Daily Sample Results October 2006.....	15
Table 13: Daily Sample Results November 2006.....	16
Table 14: Daily Sample Results December 2006	17
Table 15: 2006 Invalid Data	18

List of Figures

Figure 1: Location of Monitoring Stations	2
Figure 2: Monthly Average Temperature and TSP	4

Background

Teck Cominco Alaska, Incorporated (TCAK) operates the Red Dog Mine, which is located approximately 90 miles northeast of Kotzebue, Alaska and 47 miles inland of the Chukchi Sea.

On September 21, 2005 TCAK and the State of Alaska, Department of Environmental Conservation (DEC) entered into a Memorandum of Understanding (MOU) related to fugitive dust at the Red Dog mine. Section 2.1 of the MOU requires the annual reporting of the total suspended particulates, lead, and zinc sample results. The reporting requirement of Section 2.1 of the MOU is satisfied with this report.

Monitoring Program

TCAK monitors Total Suspended Particulates (TSP), airborne lead, and airborne zinc using Rupprecht & Patashnick 1400 AB TEOM ambient particulate monitors (TEOM) equipped with TSP Inlets and Automatic Cartridge Collection Units (ACCU). The units measure TSP concentration every two seconds and record the hourly average TSP concentration. The ACCU collects a sample for airborne zinc and lead on a preset I in 2 day schedule. All monitoring is done within the ambient air boundary and is conducted to provide operation understanding and increased control of fugitive dust.

In 2006 the monitoring program consisted of two monitoring stations. The first monitor, PAC TEOM, is located on the roof of the southeast corner of the Personal Accommodation Complex. The second monitor, T-Dam TEOM, is located west of the tailing dam. See Figure 1 for the location of the sample stations.

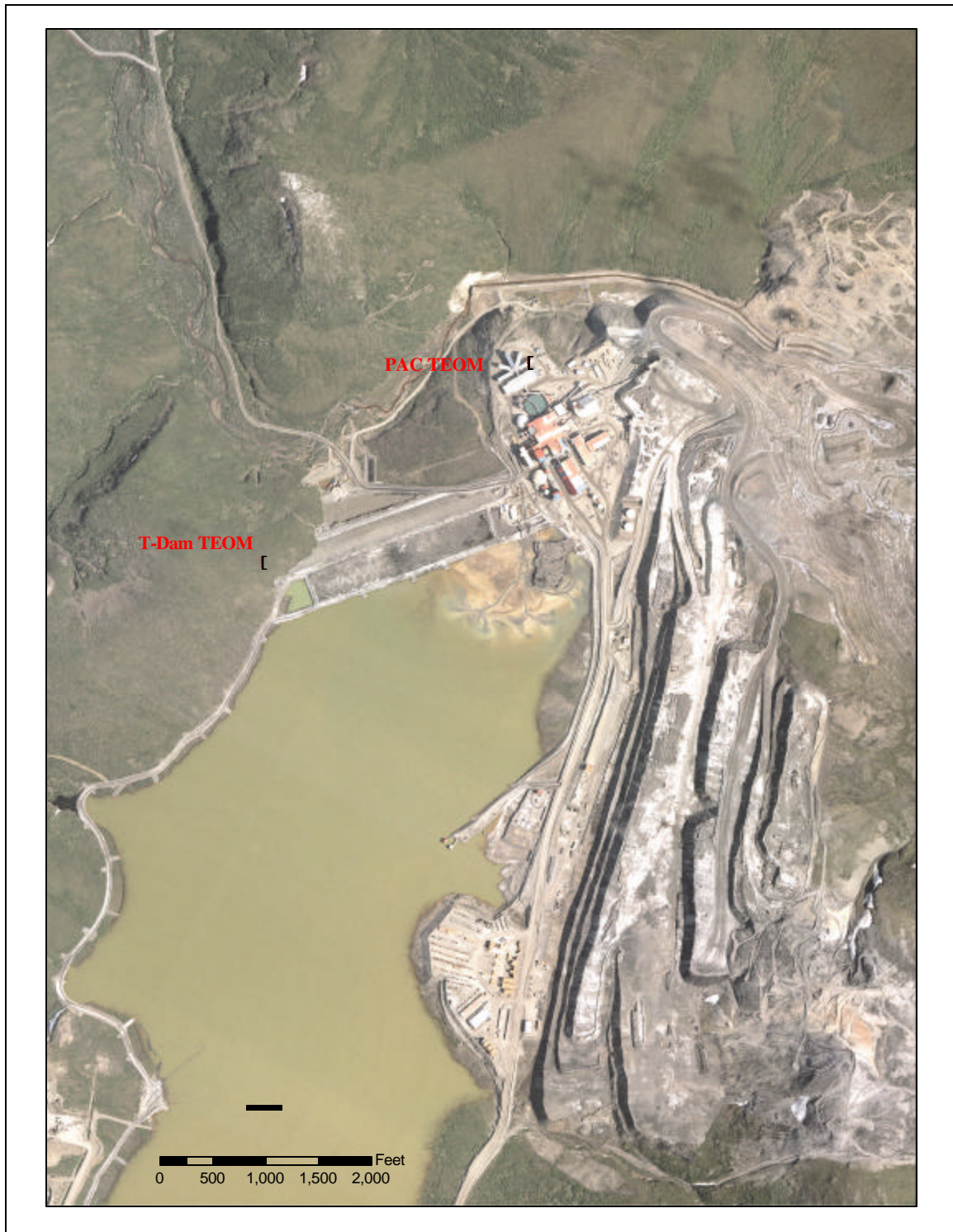


Figure 1: Location of Monitoring Stations

Sample Results

Results Summary

The annual and quarterly averages of the PAC TEOM and T-Dam TEOM for TSP, lead and zinc are provided in Table 1. During 2006 the PAC TEOM averaged $50 \mu\text{g}/\text{m}^3$ TSP, $0.6 \mu\text{g}/\text{m}^3$ lead, and $1.2 \mu\text{g}/\text{m}^3$ zinc. The T-Dam TEOM averaged $26 \mu\text{g}/\text{m}^3$ TSP, $0.2 \mu\text{g}/\text{m}^3$ lead, and $0.4 \mu\text{g}/\text{m}^3$ zinc.

The fugitive emissions follow a cyclical pattern, with the lowest emission during the nonfreezing portion of the year and higher emission during the freezing portion of the year (Figure 2). The highest monthly averages were observed in March, April, November, and December. The monthly minimum, maximum, and average sample results for TSP, lead and zinc are presented in Table 2. Comparing the TSP, lead and zinc to the average temperature and precipitation indicate that the fugitive emissions are related to periods of low temperature with little precipitation.

The daily TSP, lead and zinc samples are presented in Table 3 through Table 14. The daily average temperature and daily precipitation is included for comparison purposes. The data indicates that episodes of increased fugitive emissions are related to periods of subfreezing temperature with little precipitation.

A summary of invalid samples is provided in Table 15. Sources of invalid readings included water on the sample filter, system programming errors, missing data and maintenance on the sampling system.

Red Dog Mine
 Total Suspended Particulates, Lead and Zinc Concentrations
 January 1, 2006 to December 31, 2006

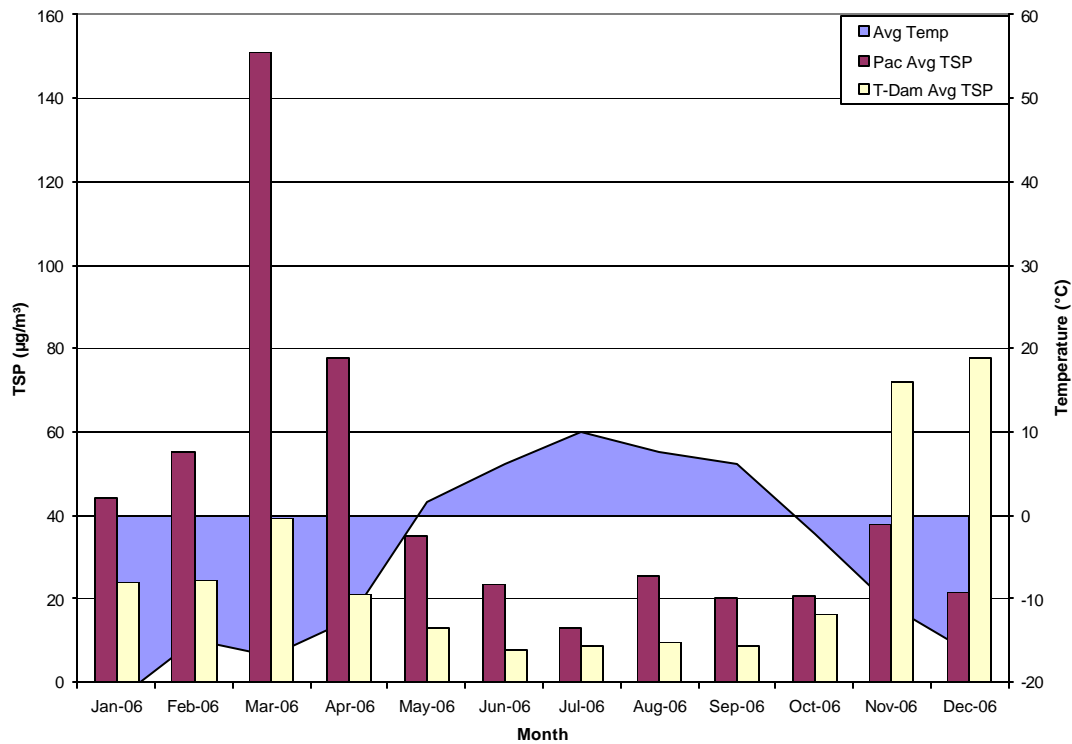


Figure 2: Monthly Average Temperature and TSP

Table 1: Quarterly and Annual Averages

Red Dog Mine 2006 Quarterly and Annual Temperature Precipitation TSP, Lead and Zinc Concentration								
	Avg Temp °C	Daily Precip mm	PAC TEOM			T-Dam TEOM		
			Lead µg/m³	Zinc µg/m³	TSP µg/m³	Lead µg/m³	Zinc µg/m³	TSP µg/m³
1 st Quarter Average	-18.2	0.6	1.0	1.7	87	0.4	0.8	29
2 nd Quarter Average	-1.5	0.9	0.3	0.8	44	0.1	0.3	13
3 rd Quarter Average	7.9	2.8	0.2	0.6	21	0.0	0.1	9
4 th Quarter Average	-9.8	1.2	0.7	1.4	27	0.2	0.3	53
Annual Min	-34.8	0.0	0.0	0.0	3	0.0	0.0	2
Annual Max	16.5	25.3	6.1	10.6	518	1.4	3.1	1274
Annual Average	-5.3	1.4	0.6	1.2	50	0.2	0.4	26

Red Dog Mine
 Total Suspended Particulates, Lead and Zinc Concentrations
 January 1, 2006 to December 31, 2006

Table 2: Monthly Minimum, Maximum, and Averages

Red Dog Mine 2006 Monthly Temperature Precipitation TSP, Lead and Zinc Concentration									
		Avg Temp °C	Daily Precip mm	PAC TEOM			T-Dam TEOM		
				Lead µg/m ³	Zinc µg/m ³	TSP µg/m ³	Lead µg/m ³	Zinc µg/m ³	TSP µg/m ³
Jan	Min	-32.4	0.0	0.1	0.1	3	0.0	0.1	3
	Max	-11.8	1.3	1.4	2.2	134	0.9	1.5	63
	Avg	-22.1	0.2	0.4	0.7	44	0.3	0.6	24
Feb	Min	-34.8	0.0	0.2	0.4	7	0.0	0.0	6
	Max	-0.5	10.6	3.3	5.4	289	0.5	1.5	84
	Avg	-14.8	1.5	0.8	1.4	55	0.2	0.5	24
Mar	Min	-31.9	0.0	0.3	0.4	19	0.1	0.3	8
	Max	-5.5	0.7	6.1	10.6	518	1.3	2.6	100
	Avg	-16.9	0.1	1.6	2.7	151	0.6	1.2	39
April	Min	-22.6	0.0	0.1	0.2	12	0.0	0.1	8
	Max	-3.3	5.3	1.8	4.5	266	1.1	3.1	45
	Avg	-12.6	0.4	0.7	1.4	78	0.3	0.7	21
May	Min	-4.6	0.0	0.1	0.2	7	0.0	0.0	4
	Max	8.0	7.2	0.6	1.5	190	0.1	0.2	40
	Avg	1.6	0.4	0.2	0.5	35	0.0	0.1	13
June	Min	-3.6	0.0	0.1	0.1	5	0.0	0.0	3
	Max	12.8	12.7	0.5	1.5	190	0.3	1.0	34
	Avg	6.2	2.0	0.2	0.5	23	0.0	0.1	8
July	Min	2.7	0.0	0.1	0.3	6	0.0	0.0	3
	Max	16.5	25.3	0.3	0.6	24	0.1	0.3	41
	Avg	9.9	3.9	0.2	0.4	13	0.0	0.1	9
Aug	Min	2.7	0.0	0.1	0.3	8	0.0	0.0	3
	Max	12.0	12.6	0.2	0.6	40	0.4	1.1	25
	Avg	7.6	1.4	0.2	0.5	25	0.1	0.2	10
Sept	Min	-0.1	0.0	0.0	0.1	3	0.0	0.0	5
	Max	10.9	15.9	0.5	1.6	78	0.1	0.2	22
	Avg	6.1	3.2	0.2	0.7	20	0.0	0.1	9
Oct	Min	-10.3	0.0	0.1	0.2	5	0.0	0.0	4
	Max	5.6	20.1	0.8	1.8	86	0.3	0.6	87
	Avg	-2.3	2.5	0.3	0.8	21	0.1	0.2	16
Nov	Min	-17.4	0.0	0.1	0.2	5	0.0	0.0	2
	Max	-4.1	3.1	3.4	5.3	221	0.4	0.5	1167
	Avg	-10.9	0.7	1.3	2.5	38	0.2	0.3	72
Dec	Min	-29.3	0.0	0.0	0.0	5	0.0	0.1	4
	Max	-2.6	2.3	0.8	2.2	72	1.4	1.4	1274
	Avg	-16.3	0.5	0.2	0.6	21	0.4	0.6	78

Table 3: Daily Sample Results January 2006

Red Dog Mine January 2006 Temperature Precipitation TSP, Lead and Zinc Concentration								
	Average Temp °C	Daily Precip mm	PAC TEOM			T-Dam TEOM		
			Lead µg/m ³	Zinc µg/m ³	TSP µg/m ³	Lead µg/m ³	Zinc µg/m ³	TSP µg/m ³
1-Jan-06	-15.9	0.0	0.1	0.1	11	0.0	0.1	5
2-Jan-06	-17.2	0.0	--	--	5	--	--	3
3-Jan-06	-14.2	0.1	0.4	0.9	49	0.1	0.3	19
4-Jan-06	-12.5	1.2	--	--	42	--	--	13
5-Jan-06	-11.8	0.1	--	--	27	0.1	0.2	6
6-Jan-06	-12.8	0.0	--	--	73	--	--	24
7-Jan-06	-21.7	0.0	--	--	51	0.1	0.2	28
8-Jan-06	-21.8	0.0	--	--	12	--	--	9
9-Jan-06	-21.9	0.0	--	--	21	--	--	6
10-Jan-06	-21.8	0.0	--	--	37	0.1	0.2	21
11-Jan-06	-21.0	0.0	--	--	63	0.1	0.3	13
12-Jan-06	-16.9	0.2	--	--	102	--	--	45
13-Jan-06	-21.5	0.5	0.4	0.7	3	0.2	0.6	--
14-Jan-06	-24.3	0.2	--	--	43	--	--	--
15-Jan-06	-25.7	0.3	0.8	1.5	68	0.2	0.4	37
16-Jan-06	-22.8	0.0	--	--	37	--	--	34
17-Jan-06	-21.3	0.3	0.3	0.5	73	0.7	1.5	43
18-Jan-06	-26.7	1.3	--	--	32	--	--	19
19-Jan-06	-28.1	0.4	0.3	0.5	59	0.4	1.0	21
20-Jan-06	-30.9	0.1	--	--	63	--	--	39
21-Jan-06	-32.4	0.0	0.2	0.4	34	0.7	1.2	39
22-Jan-06	-22.7	0.2	--	--	45	--	--	35
23-Jan-06	-25.4	0.0	0.2	0.3	16	0.2	0.4	10
24-Jan-06	-27.4	0.0	--	--	134	--	--	63
25-Jan-06	-27.6	0.0	1.4	2.2	87	0.9	1.5	30
26-Jan-06	-29.2	0.1	--	--	59	--	--	45
27-Jan-06	-23.4	0.6	0.2	0.5	64	0.7	1.3	56
28-Jan-06	-16.0	0.2	--	--	24	--	--	7
29-Jan-06	-18.1	0.0	0.2	0.3	14	0.1	0.2	9
30-Jan-06	-23.8	0.0	--	--	5	--	--	3
31-Jan-06	-28.9	0.0	0.3	0.5	21	0.1	0.2	8

Table 4: Daily Sample Results February 2006

Red Dog Mine February 2006 Temperature Precipitation TSP, Lead and Zinc Concentration								
	Average Temp °C	Daily Precip mm	PAC TEOM			T-Dam TEOM		
			Lead µg/m ³	Zinc µg/m ³	TSP µg/m ³	Lead µg/m ³	Zinc µg/m ³	TSP µg/m ³
1-Feb-06	-34.2	0.0	--	--	107	--	--	84
2-Feb-06	-34.8	0.0	0.4	0.6	46	0.3	0.6	17
3-Feb-06	-27.8	0.2	--	--	47	--	--	43
4-Feb-06	-28.9	0.6	0.4	0.7	47	0.4	1.0	15
5-Feb-06	-10.3	0.6	--	--	141	--	--	74
6-Feb-06	-7.2	0.0	0.3	0.6	25	0.1	0.1	11
7-Feb-06	-6.5	4.2	--	--	72	--	--	38
8-Feb-06	-17.1	3.0	0.7	1.3	54	0.5	1.5	20
9-Feb-06	-7.8	0.1	--	--	158	--	--	33
10-Feb-06	-5.1	0.0	3.3	5.4	289	0.4	0.7	75
11-Feb-06	-2.4	1.3	--	--	36	--	--	17
12-Feb-06	-5.0	1.4	0.3	0.7	11	0.1	0.3	8
13-Feb-06	-9.3	0.9	--	--	111	--	--	23
14-Feb-06	-0.6	2.4	0.7	1.4	35	0.1	0.2	17
15-Feb-06	-0.5	10.6	--	--	14	--	--	7
16-Feb-06	-4.3	1.0	0.5	1.1	14	0.0	0.0	6
17-Feb-06	-4.9	0.0	--	--	35	--	--	12
18-Feb-06	-2.2	7.8	0.6	1.2	27	0.1	0.2	--
19-Feb-06	-6.2	1.7	--	--	11	--	--	8
20-Feb-06	-13.0	0.6	0.2	0.4	7	0.1	0.2	7
21-Feb-06	-24.4	0.1	--	--	10	--	--	12
22-Feb-06	-28.6	0.0	0.8	1.5	25	0.2	0.4	15
23-Feb-06	-26.6	0.0	--	--	63	--	--	40
24-Feb-06	-18.8	1.8	0.6	1.0	19	0.5	1.1	16
25-Feb-06	-12.6	2.3	--	--	22	--	--	9
26-Feb-06	-18.8	0.3	1.1	2.0	62	0.2	0.3	20
27-Feb-06	-24.0	0.0	--	--	41	--	--	25
28-Feb-06	-34.0	0.1	0.7	1.3	18	0.1	0.2	9

Table 5: Daily Sample Results March 2006

Red Dog Mine March 2006 Temperature Precipitation TSP, Lead and Zinc Concentration								
	Average Temp °C	Daily Precip mm	PAC TEOM			T-Dam TEOM		
			Lead µg/m ³	Zinc µg/m ³	TSP µg/m ³	Lead µg/m ³	Zinc µg/m ³	TSP µg/m ³
1-Mar-06	-26.1	0.0	--	--	94	--	--	30
2-Mar-06	-15.6	0.0	0.9	1.6	125	0.2	0.4	20
3-Mar-06	-15.9	0.0	--	--	93	--	--	25
4-Mar-06	-13.8	0.1	0.5	0.9	58	0.2	0.5	22
5-Mar-06	-9.4	0.4	--	--	28	--	--	--
6-Mar-06	-16.5	0.7	0.4	0.9	36	0.1	0.3	8
7-Mar-06	-23.2	0.2	--	--	42	--	--	31
8-Mar-06	-25.1	0.2	0.6	1.3	43	0.1	0.3	14
9-Mar-06	-31.9	0.0	--	--	76	--	--	31
10-Mar-06	-25.7	0.0	0.8	1.7	76	0.6	1.4	21
11-Mar-06	-17.9	0.0	--	--	73	--	--	33
12-Mar-06	-13.5	0.0	1.5	2.5	187	0.6	1.3	50
13-Mar-06	-12.6	0.0	--	--	160	--	--	56
14-Mar-06	-14.1	0.0	1.8	3.2	125	1.3	2.3	72
15-Mar-06	-13.4	0.0	--	--	134	--	--	45
16-Mar-06	-12.8	0.0	2.6	4.2	300	0.9	1.7	100
17-Mar-06	-13.2	0.0	--	--	147	--	--	57
18-Mar-06	-18.6	0.0	1.5	2.4	149	0.7	1.4	44
19-Mar-06	-12.6	0.0	--	--	67	--	--	28
20-Mar-06	-17.2	0.0	0.3	0.4	44	0.5	1.1	16
21-Mar-06	-22.0	0.0	--	--	96	--	--	55
22-Mar-06	-22.7	0.0	1.5	2.4	205	0.6	1.0	58
23-Mar-06	-20.5	0.0	--	--	171	--	--	58
24-Mar-06	-18.7	0.0	0.7	1.2	102	0.5	0.9	53
25-Mar-06	-16.5	0.0	--	--	19	--	--	15
26-Mar-06	-15.2	0.0	1.6	3.0	212	1.1	2.6	--
27-Mar-06	-15.4	0.0	--	--	449	--	--	--
28-Mar-06	-14.8	0.0	2.6	4.3	344	0.7	1.4	--
29-Mar-06	-12.9	0.0	--	--	387	--	--	--
30-Mar-06	-12.1	0.0	6.1	10.6	518	1.0	2.1	--
31-Mar-06	-5.5	0.0	--	--	117	--	--	--

Table 6: Daily Sample Results April 2006

Red Dog Mine April 2006 Temperature Precipitation TSP, Lead and Zinc Concentration								
	Average Temp °C	Daily Precip mm	PAC TEOM			T-Dam TEOM		
			Lead µg/m ³	Zinc µg/m ³	TSP µg/m ³	Lead µg/m ³	Zinc µg/m ³	TSP µg/m ³
1-Apr-06	-6.6	5.3	0.9	1.9	64	0.3	0.7	--
2-Apr-06	-13.0	1.4	--	--	70	--	--	--
3-Apr-06	-18.9	0.0	0.7	1.3	54	0.1	0.2	--
4-Apr-06	-19.1	0.0	--	--	74	--	--	--
5-Apr-06	-17.6	0.1	1.2	1.2	55	0.8	0.7	--
6-Apr-06	-17.6	0.0	--	--	120	--	--	--
7-Apr-06	-13.4	0.0	1.8	4.5	266	1.1	3.1	--
8-Apr-06	-7.0	0.0	--	--	--	--	--	--
9-Apr-06	-4.1	1.4	0.5	1.2	--	--	--	--
10-Apr-06	-8.6	2.9	--	--	--	--	--	8
11-Apr-06	-11.1	1.4	0.6	1.2	--	0.3	0.7	9
12-Apr-06	-13.6	0.0	--	--	--	--	--	42
13-Apr-06	-11.4	0.0	0.9	1.8	139	0.3	0.7	32
14-Apr-06	-15.5	0.0	--	--	39	--	--	12
15-Apr-06	-18.3	0.0	1.3	2.2	176	0.4	0.7	41
16-Apr-06	-13.1	0.2	--	--	79	--	--	18
17-Apr-06	-13.3	0.1	0.4	0.7	20	0.3	0.6	24
18-Apr-06	-20.0	0.0	--	--	12	--	--	9
19-Apr-06	-22.6	0.0	0.4	0.8	29	0.4	0.8	12
20-Apr-06	-21.4	0.0	--	--	146	--	--	19
21-Apr-06	-17.9	0.0	0.5	0.9	38	0.3	0.6	23
22-Apr-06	-16.1	0.0	--	--	107	--	--	15
23-Apr-06	-12.9	0.0	0.6	1.1	134	0.1	0.2	19
24-Apr-06	-3.3	0.0	--	--	31	--	--	13
25-Apr-06	-4.9	0.1	0.1	0.2	12	0.0	0.1	8
26-Apr-06	-8.6	0.0	--	--	14	--	--	9
27-Apr-06	-6.2	0.0	0.8	2.0	54	0.1	0.2	18
28-Apr-06	-7.6	0.0	--	--	68	--	--	44
29-Apr-06	-8.7	0.1	0.1	0.3	40	0.0	0.2	22
30-Apr-06	-4.5	0.0	--	--	106	--	--	45

Table 7: Daily Sample Results May 2006

Red Dog Mine								
May 2006								
Temperature Precipitation								
TSP, Lead and Zinc Concentration								
	Average Temp °C	Daily Precip mm	PAC TEOM			T-Dam TEOM		
			Lead µg/m ³	Zinc µg/m ³	TSP µg/m ³	Lead µg/m ³	Zinc µg/m ³	TSP µg/m ³
1-May-06	-4.6	0.1	0.6	1.1	141	0.1	0.2	40
2-May-06	-4.4	0.0	--	--	190	--	--	31
3-May-06	-3.3	0.0	0.3	0.5	149	0.1	0.2	36
4-May-06	-1.9	0.1	--	--	31	--	--	10
5-May-06	-0.2	0.0	0.1	0.3	30	0.0	0.1	14
6-May-06	0.7	0.1	--	--	18	--	--	22
7-May-06	-1.0	0.0	0.2	0.3	56	0.0	0.1	28
8-May-06	-1.7	0.3	--	--	12	--	--	9
9-May-06	0.0	0.1	0.2	0.4	22	0.0	0.0	19
10-May-06	-1.4	0.0	--	--	20	--	--	13
11-May-06	-3.9	0.1	0.1	0.3	33	0.0	0.1	6
12-May-06	-3.1	0.1	--	--	23	--	--	10
13-May-06	-0.9	7.2	0.6	1.5	--	0.0	0.1	8
14-May-06	0.2	1.7	--	--	20	--	--	6
15-May-06	0.5	1.1	0.5	1.4	18	0.0	0.0	5
16-May-06	3.6	0.2	--	--	13	--	--	9
17-May-06	4.8	0.6	0.2	0.5	16	0.0	0.1	9
18-May-06	4.1	0.0	--	--	14	--	--	9
19-May-06	2.3	0.0	0.1	0.3	25	0.0	0.1	7
20-May-06	2.7	0.0	--	--	8	--	--	5
21-May-06	2.4	0.0	0.1	0.2	9	0.0	0.0	5
22-May-06	2.9	0.0	--	--	22	--	--	10
23-May-06	4.8	0.0	0.1	0.3	33	0.0	0.1	--
24-May-06	7.7	0.0	--	--	43	--	--	16
25-May-06	7.5	0.1	0.1	0.3	32	0.0	0.1	20
26-May-06	6.3	0.0	--	--	18	--	--	13
27-May-06	8.0	0.0	0.1	0.2	23	0.0	0.0	11
28-May-06	4.7	0.0	--	--	14	--	--	8
29-May-06	3.9	0.0	0.1	0.2	7	0.0	0.0	4
30-May-06	4.3	0.0	--	--	10	--	--	6
31-May-06	4.1	0.0	0.1	0.2	7	0.0	0.0	4

Table 8: Daily Sample Results June 2006

Red Dog Mine June 2006 Temperature Precipitation TSP, Lead and Zinc Concentration								
	Average Temp °C	Daily Precip mm	PAC TEOM			T-Dam TEOM		
			Lead µg/m³	Zinc µg/m³	TSP µg/m³	Lead µg/m³	Zinc µg/m³	TSP µg/m³
1-Jun-06	0.3	0.1	--	--	16	--	--	6
2-Jun-06	-2.1	10.3	0.1	0.3	--	0.0	0.1	5
3-Jun-06	-3.6	0.9	--	--	5	--	--	5
4-Jun-06	-1.0	0.2	0.1	0.1	6	0.0	0.0	3
5-Jun-06	-1.8	4.7	--	--	24	--	--	12
6-Jun-06	-1.5	7.6	0.1	0.2	7	0.3	1.0	3
7-Jun-06	-1.5	0.3	--	--	5	--	--	3
8-Jun-06	2.6	0.4	0.2	0.8	15	0.0	0.0	4
9-Jun-06	8.1	0.3	--	--	29	--	--	9
10-Jun-06	9.6	1.8	0.2	0.6	20	0.0	0.0	8
11-Jun-06	8.5	0.6	--	--	13	--	--	6
12-Jun-06	9.6	0.0	0.1	0.2	12	0.0	0.0	6
13-Jun-06	11.2	0.0	--	--	17	--	--	11
14-Jun-06	10.1	0.1	0.1	0.1	21	0.0	0.1	6
15-Jun-06	12.8	0.0	--	--	36	--	--	9
16-Jun-06	11.9	0.0	0.1	0.1	24	0.1	0.3	24
17-Jun-06	11.9	0.1	--	--	37	--	--	34
18-Jun-06	10.6	6.4	0.2	0.6	23	0.0	0.0	8
19-Jun-06	9.3	0.3	--	--	11	--	--	4
20-Jun-06	4.2	0.1	0.2	0.8	12	0.0	0.0	3
21-Jun-06	9.5	0.0	--	--	11	--	--	5
22-Jun-06	5.6	1.0	0.1	0.3	9	0.0	0.0	4
23-Jun-06	5.1	1.4	--	--	10	--	--	3
24-Jun-06	8.5	0.7	0.5	1.5	33	0.0	0.0	4
25-Jun-06	6.9	0.0	--	--	17	--	--	5
26-Jun-06	8.0	0.0	0.1	0.3	23	0.2	0.5	8
27-Jun-06	12.7	0.3	--	--	190	--	--	23
28-Jun-06	5.3	12.7	0.1	0.4	9	0.0	0.0	3
29-Jun-06	8.5	0.6	--	--	--	--	--	7
30-Jun-06	6.1	9.5	0.3	0.8	--	0.0	0.0	4

Table 9: Daily Sample Results July 2006

Red Dog Mine July 2006 Temperature Precipitation TSP, Lead and Zinc Concentration								
	Average Temp °C	Daily Precip mm	PAC TEOM			T-Dam TEOM		
			Lead µg/m ³	Zinc µg/m ³	TSP µg/m ³	Lead µg/m ³	Zinc µg/m ³	TSP µg/m ³
1-Jul-06	4.2	17.4	--	--	--	--	--	4
2-Jul-06	8.1	0.1	0.2	0.4	--	0.0	0.0	5
3-Jul-06	10.6	0.0	--	--	--	--	--	10
4-Jul-06	13.2	0.0	0.1	0.3	--	0.0	0.0	8
5-Jul-06	13.4	0.2	--	--	--	--	--	10
6-Jul-06	14.0	0.1	0.2	0.4	--	0.1	0.3	27
7-Jul-06	10.8	0.0	--	--	--	--	--	41
8-Jul-06	9.7	3.9	0.3	0.5	--	0.1	0.2	18
9-Jul-06	14.1	1.1	--	--	--	--	--	9
10-Jul-06	15.5	0.4	--	--	--	0.0	0.1	9
11-Jul-06	14.5	0.0	--	--	24	--	--	8
12-Jul-06	8.6	13.9	0.2	0.6	10	0.0	0.1	5
13-Jul-06	8.8	4.4	--	--	6	--	--	4
14-Jul-06	5.7	1.8	--	--	--	0.0	0.0	3
15-Jul-06	7.4	12.3	--	--	--	--	--	3
16-Jul-06	3.9	9.2	--	--	--	0.0	0.0	4
17-Jul-06	7.5	2.9	--	--	--	--	--	4
18-Jul-06	7.5	25.3	--	--	--	0.0	0.0	4
19-Jul-06	6.4	1.4	--	--	--	--	--	4
20-Jul-06	7.4	9.2	--	--	--	0.0	0.0	4
21-Jul-06	9.4	0.8	--	--	--	--	--	5
22-Jul-06	9.5	0.0	--	--	--	0.0	0.0	6
23-Jul-06	11.1	0.2	--	--	--	--	--	11
24-Jul-06	16.5	0.2	--	--	--	0.1	0.2	18
25-Jul-06	15.9	0.1	--	--	--	--	--	18
26-Jul-06	10.7	3.6	--	--	--	0.0	0.0	6
27-Jul-06	9.6	1.2	--	--	--	--	--	6
28-Jul-06	11.8	6.8	--	--	--	0.0	0.0	5
29-Jul-06	10.3	2.9	--	--	--	--	--	4
30-Jul-06	7.4	0.2	--	--	--	0.0	0.0	4
31-Jul-06	2.7	0.2	--	--	--	--	--	3

Table 10: Daily Sample Results August 2006

Red Dog Mine August 2006 Temperature Precipitation TSP, Lead and Zinc Concentration								
	Average Temp °C	Daily Precip mm	PAC TEOM			T-Dam TEOM		
			Lead µg/m ³	Zinc µg/m ³	TSP µg/m ³	Lead µg/m ³	Zinc µg/m ³	TSP µg/m ³
1-Aug-06	5.7	0.4	--	--	--	0.0	0.0	5
2-Aug-06	8.0	2.7	--	--	--	--	--	5
3-Aug-06	10.1	4.4	--	--	--	0.4	1.1	7
4-Aug-06	12.0	0.4	--	--	--	--	--	9
5-Aug-06	8.1	0.1	--	--	--	0.1	0.4	5
6-Aug-06	7.3	5.5	--	--	--	--	--	7
7-Aug-06	6.6	8.7	--	--	--	0.0	0.0	4
8-Aug-06	7.3	0.0	--	--	--	--	--	10
9-Aug-06	9.1	4.4	--	--	--	0.0	0.1	8
10-Aug-06	10.2	12.6	--	--	--	--	--	4
11-Aug-06	8.5	0.0	--	--	--	0.0	0.0	4
12-Aug-06	8.4	0.9	--	--	--	--	--	4
13-Aug-06	8.9	0.0	--	--	--	0.0	0.0	4
14-Aug-06	10.6	0.0	--	--	--	--	--	4
15-Aug-06	8.3	2.6	--	--	--	0.3	0.8	16
16-Aug-06	7.4	0.0	--	--	--	--	--	3
17-Aug-06	6.5	0.0	--	--	--	0.0	0.2	10
18-Aug-06	2.7	0.0	--	--	--	--	--	11
19-Aug-06	4.5	0.0	--	--	--	0.1	0.1	18
20-Aug-06	7.3	0.0	--	--	--	--	--	7
21-Aug-06	7.3	0.0	--	--	--	0.1	0.3	7
22-Aug-06	5.4	0.4	--	--	--	--	--	14
23-Aug-06	7.7	0.4	--	--	--	0.0	0.1	7
24-Aug-06	9.9	0.0	--	--	--	--	--	9
25-Aug-06	10.9	0.2	0.2	0.5	26	0.0	0.1	13
26-Aug-06	9.4	0.1	--	--	40	--	--	25
27-Aug-06	5.8	0.0	0.2	0.6	30	0.0	0.1	9
28-Aug-06	4.3	0.1	--	--	8	--	--	4
29-Aug-06	5.0	0.2	0.1	0.3	25	0.1	0.2	18
30-Aug-06	5.4	0.5	--	--	27	--	--	22
31-Aug-06	5.6	0.0	0.2	0.4	23	0.1	0.2	22

Table 11: Daily Sample Results September 2006

Red Dog Mine September 2006 Temperature Precipitation TSP, Lead and Zinc Concentration								
	Average Temp °C	Daily Precip mm	PAC TEOM			T-Dam TEOM		
			Lead µg/m³	Zinc µg/m³	TSP µg/m³	Lead µg/m³	Zinc µg/m³	TSP µg/m³
1-Sep-06	4.0	0.0	--	--	48	--	--	22
2-Sep-06	6.4	0.2	0.1	0.3	20	0.0	0.0	12
3-Sep-06	6.2	0.0	--	--	29	--	--	7
4-Sep-06	10.9	0.0	0.3	1.1	36	0.1	0.2	12
5-Sep-06	9.3	0.1	--	--	78	--	--	13
6-Sep-06	7.3	0.1	0.5	1.6	33	0.0	0.1	9
7-Sep-06	8.7	12.5	--	--	16	--	--	11
8-Sep-06	8.7	10.7	0.1	0.2	8	0.0	0.1	7
9-Sep-06	9.5	0.3	--	--	23	--	--	6
10-Sep-06	10.8	0.1	0.1	0.3	8	0.0	0.1	6
11-Sep-06	7.7	0.0	--	--	25	--	--	--
12-Sep-06	6.8	11.8	0.5	1.4	17	0.0	0.1	--
13-Sep-06	7.5	5.6	--	--	19	--	--	--
14-Sep-06	9.0	5.4	0.3	1.3	39	0.0	0.0	--
15-Sep-06	9.0	15.9	--	--	18	--	--	--
16-Sep-06	10.1	3.8	0.3	1.0	15	0.0	0.1	--
17-Sep-06	8.4	12.0	--	--	20	--	--	--
18-Sep-06	6.9	7.2	--	--	16	0.0	0.0	--
19-Sep-06	8.2	0.0	--	--	3	--	--	--
20-Sep-06	5.7	0.0	0.1	0.1	12	0.0	0.0	--
21-Sep-06	4.3	0.4	--	--	20	--	--	--
22-Sep-06	3.2	0.4	--	--	5	0.0	0.1	--
23-Sep-06	0.0	0.2	--	--	5	--	--	--
24-Sep-06	1.5	0.0	--	--	12	0.0	0.1	--
25-Sep-06	1.4	0.0	--	--	34	--	--	8
26-Sep-06	3.5	0.6	0.0	0.1	6	0.0	0.1	6
27-Sep-06	3.7	1.1	--	--	9	--	--	5
28-Sep-06	2.3	5.2	--	--	13	0.0	0.0	5
29-Sep-06	1.5	1.6	--	--	13	--	--	6
30-Sep-06	-0.1	0.0	0.1	0.3	12	0.0	0.1	6

Table 12: Daily Sample Results October 2006

Red Dog Mine October 2006 Temperature Precipitation TSP, Lead and Zinc Concentration								
	Average Temp °C	Daily Precip mm	PAC TEOM			T-Dam TEOM		
			Lead µg/m ³	Zinc µg/m ³	TSP µg/m ³	Lead µg/m ³	Zinc µg/m ³	TSP µg/m ³
1-Oct-06	-0.8	0.0	--	--	10	--	--	5
2-Oct-06	-1.4	0.0	--	--	5	0.0	0.0	4
3-Oct-06	1.5	0.0	--	--	56	--	--	32
4-Oct-06	1.3	0.0	0.1	0.3	7	0.0	0.1	6
5-Oct-06	-1.7	0.3	--	--	8	--	--	4
6-Oct-06	-4.4	0.0	0.3	0.7	86	0.1	0.1	22
7-Oct-06	0.3	0.0	--	--	16	--	--	10
8-Oct-06	2.3	3.0	0.1	0.2	7	0.0	0.1	8
9-Oct-06	5.6	20.1	--	--	6	--	--	6
10-Oct-06	2.6	13.0	--	--	15	0.0	0.1	6
11-Oct-06	-2.2	6.2	--	--	--	--	--	7
12-Oct-06	-3.0	0.8	0.2	0.7	9	0.0	0.1	6
13-Oct-06	-2.4	0.2	--	--	68	--	--	12
14-Oct-06	-0.7	8.2	0.2	0.7	--	0.1	0.1	7
15-Oct-06	0.6	1.9	--	--	7	--	--	8
16-Oct-06	1.4	2.3	--	--	19	0.0	0.1	7
17-Oct-06	1.9	4.8	--	--	9	--	--	5
18-Oct-06	1.3	1.2	--	--	7	0.0	0.1	6
19-Oct-06	0.1	0.4	--	--	--	--	--	12
20-Oct-06	0.6	3.5	--	--	--	0.0	0.1	7
21-Oct-06	-0.4	0.8	--	--	--	--	--	7
22-Oct-06	-4.2	0.1	0.1	0.3	--	0.0	0.0	--
23-Oct-06	-6.4	0.0	--	--	--	--	--	64
24-Oct-06	-9.1	0.0	0.5	0.5	--	0.1	0.1	24
25-Oct-06	-10.1	0.1	--	--	--	--	--	87
26-Oct-06	-10.3	0.1	0.5	1.2	--	0.1	0.3	40
27-Oct-06	-5.8	1.5	--	--	--	--	--	29
28-Oct-06	-6.5	0.4	0.5	1.2	--	0.3	0.6	--
29-Oct-06	-3.1	0.1	--	--	--	--	--	11
30-Oct-06	-8.5	0.0	0.8	1.8	--	0.2	0.5	14
31-Oct-06	-9.5	7.5	--	--	--	--	--	15

Table 13: Daily Sample Results November 2006

Red Dog Mine November 2006 Temperature Precipitation TSP, Lead and Zinc Concentration								
	Average Temp °C	Daily Precip mm	PAC TEOM			T-Dam TEOM		
			Lead µg/m ³	Zinc µg/m ³	TSP µg/m ³	Lead µg/m ³	Zinc µg/m ³	TSP µg/m ³
1-Nov-06	-5.0	1.7	0.1	0.2	--	0.0	0.1	5
2-Nov-06	-4.1	1.3	--	--	--	--	--	5
3-Nov-06	-4.9	0.4	0.2	0.7	--	0.0	0.0	2
4-Nov-06	-6.3	0.0	--	--	5	--	--	4
5-Nov-06	-7.1	1.4	2.0	4.6	8	0.2	0.4	4
6-Nov-06	-8.0	0.8	--	--	9	--	--	6
7-Nov-06	-12.8	0.1	--	--	13	--	--	6
8-Nov-06	-12.8	2.9	--	--	--	--	--	--
9-Nov-06	-16.0	0.0	1.8	3.7	22	0.1	0.4	6
10-Nov-06	-16.8	0.1	--	--	50	--	--	47
11-Nov-06	-10.3	0.0	1.9	3.9	15	0.1	0.3	10
12-Nov-06	-12.9	0.1	--	--	23	--	--	--
13-Nov-06	-13.7	3.1	--	--	30	--	--	18
14-Nov-06	-13.4	0.0	--	--	12	--	--	10
15-Nov-06	-17.4	0.0	0.9	1.6	10	--	--	6
16-Nov-06	-14.2	0.0	--	--	30	--	--	8
17-Nov-06	-14.8	0.1	2.1	4.5	39	0.1	0.3	13
18-Nov-06	-16.3	0.0	--	--	49	--	--	26
19-Nov-06	-14.6	0.3	2.2	5.3	57	0.2	0.5	34
20-Nov-06	-12.4	1.1	--	--	12	--	--	6
21-Nov-06	-11.5	3.0	0.2	0.6	12	0.1	0.3	6
22-Nov-06	-11.7	1.0	--	--	16	--	--	9
23-Nov-06	-12.5	0.3	0.3	0.7	19	0.1	0.3	7
24-Nov-06	-13.5	0.1	--	--	41	--	--	24
25-Nov-06	-11.8	0.1	0.4	0.7	40	0.3	0.5	37
26-Nov-06	-10.8	0.4	--	--	221	--	--	153
27-Nov-06	-8.2	0.0	3.4	3.3	187	0.4	0.5	376
28-Nov-06	-4.9	0.1	--	--	12	--	--	10
29-Nov-06	-4.3	0.2	--	--	16	0.1	0.2	14
30-Nov-06	-5.0	3.0	--	--	--	--	--	1167

Table 14: Daily Sample Results December 2006

Red Dog Mine December 2006 Temperature Precipitation TSP, Lead and Zinc Concentration								
	Average Temp °C	Daily Precip mm	PAC TEOM			T-Dam TEOM		
			Lead µg/m ³	Zinc µg/m ³	TSP µg/m ³	Lead µg/m ³	Zinc µg/m ³	TSP µg/m ³
1-Dec-06	-4.0	1.7	--	--	--	0.2	0.5	11
2-Dec-06	-4.8	1.1	--	--	14	--	--	9
3-Dec-06	-2.6	0.0	0.6	1.2	55	1.4	0.7	1274
4-Dec-06	-8.4	0.0	--	--	35	--	--	15
5-Dec-06	-12.1	0.0	--	--	18	0.1	0.2	12
6-Dec-06	-11.7	0.0	--	--	8	--	--	--
7-Dec-06	-11.4	0.0	--	--	28	0.3	0.5	--
8-Dec-06	-12.2	1.7	--	--	20	--	--	--
9-Dec-06	-11.6	1.3	--	--	5	0.4	1.0	--
10-Dec-06	-12.1	1.2	--	--	8	--	--	--
11-Dec-06	-12.0	2.3	--	--	10	0.5	1.0	--
12-Dec-06	-15.4	1.5	--	--	14	--	--	--
13-Dec-06	-14.2	1.2	--	--	9	0.3	0.5	--
14-Dec-06	-16.2	0.0	--	--	28	--	--	--
15-Dec-06	-19.4	0.0	--	--	13	0.0	0.1	--
16-Dec-06	-15.9	0.2	--	--	15	--	--	--
17-Dec-06	-12.6	0.0	--	--	14	0.1	0.3	16
18-Dec-06	-14.1	0.2	--	--	7	--	--	4
19-Dec-06	-16.9	0.0	--	--	43	0.2	0.4	34
20-Dec-06	-20.3	0.3	--	--	24	--	--	19
21-Dec-06	-20.3	0.2	0.2	0.5	12	0.1	0.2	6
22-Dec-06	-22.8	1.2	--	--	50	--	--	13
23-Dec-06	-24.0	0.3	0.0	0.0	--	--	--	7
24-Dec-06	-21.1	0.0	--	--	11	--	--	8
25-Dec-06	-23.4	0.1	0.0	0.0	16	--	--	8
26-Dec-06	-26.0	0.0	--	--	33	--	--	36
27-Dec-06	-29.3	0.0	0.8	2.2	72	0.5	1.4	46
28-Dec-06	-24.7	0.1	--	--	15	--	--	5
29-Dec-06	-22.2	0.2	0.0	0.0	16	--	--	11
30-Dec-06	-20.7	0.0	--	--	7	--	--	6
31-Dec-06	-24.4	0.0	0.0	0.1	19	--	--	20

Table 15: 2006 Invalid Data

Red Dog Mine 2006 TSP Lead Zinc Invalid Data			
Dates	Station	Parameter	Comment
1/5 to 1/11	PAC	Zinc, Lead	System Programming Error. No sample collected
1/13 to 1/14	T-Dam	TSP	Snow in TSP sample inlet, data invalid
2/18	T-Dam	TSP	Moisture on microbalance filter, data invalid
3/5	T-Dam	TSP	7 hours of maintenance activity, 24 hour average invalid.
3/26 to 4/9	T-Dam	TSP	Data download error, data lost
4/8 to 4/12	PAC	TSP	Micro-filter installed incorrectly, data invalid
5/13	PAC	TSP	Moisture on microbalance filter, data invalid
5/23	T-Dam	TSP	6 hours invalid due to power loss, 24 hour average invalid
6/2	PAC	TSP	Moisture on microbalance filter, data invalid
6/29 to 7/10	PAC	TSP	Flow errors, data invalid
7/13 to 8/24	PAC	TSP, Lead, Zinc	System offsite for factory maintenance and calibration
9/11 to 9/24	T-Dam	TSP	Data download error, data lost
9/18	PAC	Lead, Zinc	Flow error, no sample collected
9/21 to 9/24	PAC	Lead, Zinc	Flow error, no sample collected
9/28	PAC	Lead, Zinc	Flow error, no sample collected
10/2	PAC	Lead, Zinc	Flow error, no sample collected
10/10	PAC	Lead, Zinc	Flow error, no sample collected
10/11	PAC	TSP	Moisture on microbalance filter, data invalid
10/16 to 10/20	PAC	Lead, Zinc	Flow error, no sample collected
10/22	T-Dam	TSP	Data download error, data lost
10/28	T-Dam	TSP	Data download error, data lost
10/19 to 11/3	PAC	TSP	System error, no data collected
11/7	PAC	Lead, Zinc	Flow error, no sample collected
11/7	T-Dam	Lead, Zinc	Flow error, no sample collected
11/8	PAC	TSP	Moisture on microbalance filter, data invalid
11/8	T-Dam	TSP	Data download error, data lost
11/12	T-Dam	TSP	Data download error, data lost
11/13	PAC	Lead, Zinc	Flow error, no sample collected
11/13	T-Dam	Lead, Zinc	Flow error, no sample collected
11/15	T-Dam	Lead, Zinc	Flow error, no sample collected
11/29	PAC	Lead, Zinc	Flow error, no sample collected
11/30	PAC	TSP	Moisture on microbalance filter, data invalid
12/1	PAC	TSP, Lead, Zinc	Flow error, no sample collected. Moisture on microbalance filter, data invalid
12/5 to 12/19	PAC	Lead, Zinc	Flow error, no sample collected
12/6 to 12/16	T-Dam	TSP	Micro-filter installed incorrectly, data invalid
12/23	PAC	TSP	Moisture on microbalance filter, data invalid
12/23 to 12/25	T-Dam	Lead, Zinc	Flow error, no sample collected
12/28 to 12/31	T-Dam	Lead, Zinc	Flow error, no sample collected