

**STORM LINE SD1**

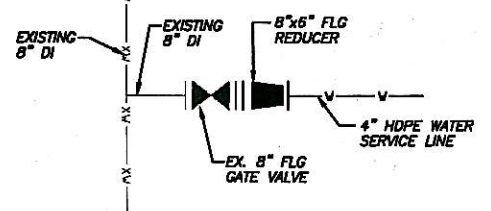
- CB 1A**  
EXISTING CATCH BASIN  
STA 1+00.0  
N 9977.57 E 10449.12
- CB 1B**  
INSTALL CATCH BASIN  
STA 1+13.7  
N 9946.45 E 10484.55
- CB 1C**  
INSTALL CATCH BASIN  
STA 1+35.3  
N 9852.31 E 10434.66
- CB 1D**  
INSTALL CATCH BASIN  
STA 1+87.5  
N 9802.77 E 10404.23

**STORM LINE SD2**

- OUTFALL 1**  
OUTFALL TO OCEAN  
STA 0+00  
N 9732.81 E 10589.93
- CB 2A**  
INSTALL CATCH BASIN  
STA 0+4.4  
N 9730.14 E 10586.36
- CB 2B**  
INSTALL CATCH BASIN  
STA 0+41.0  
N 9748.58 E 10554.72
- CB 2C**  
INSTALL CATCH BASIN  
STA 0+98.9  
N 9717.66 E 10508.39
- CB 2D**  
INSTALL CATCH BASIN  
STA 1+72.3  
N 9777.25 E 10462.12
- SD CO 2E**  
INSTALL STM CLEAN OUT  
STA 1+89.7  
N 9794.60E 10460.05

**WATER SERVICE NOTES**

- W1**  
REMOVE EXISTING FIRE HYDRANT ASSEMBLY  
INSTALL:  
(1) 90° FLGxMJ BEND  
(1) THRUST BLOCK  
N 9708.02 E 10509.19
- W2**  
CONNECT TO EXISTING 8" GATE VALVE  
INSTALL:  
(1) 8"x4" FLGxMJ REDUCER  
N 9935.77 E 10420.36
- W3**  
INSTALL 4" 22.5° BEND  
N 9913.98 E 10440.42
- W4**  
INSTALL 4" 22.5° BEND  
N 9902.76 E 10490.62
- W5**  
END 4" WATER SERVICE  
N 9890.32 E 10486.49
- W1B**  
INSTALL FIRE HYDRANT ASSEMBLY  
N 9743.76 E 10480.28



**WATER MAIN CONNECTION**  
NOT TO SCALE

Approx location of Former Auto Shop Per 12-19-1994 Remedial Action Report

**BETISWORTH**  
**Welshwhiteley, LLC**  
ARCHITECTS AND PLANNERS

NOT FOR CONSTRUCTION  
1/20/2011

CITY OF KETCHIKAN  
66% DESIGN DEVELOPMENT  
**FIRE STATION 1**  
CITY OF KETCHIKAN  
KETCHIKAN, ALASKA

CONSULTANT

PROJECT NO: 09-118  
DATE: 07 FEB 2011  
DRAWN BY: RKB  
CHKD BY: RKB  
REVISIONS:

NOT FOR CONSTRUCTION

**R&M**  
R&M ENGINEERING-KETCHIKAN, INC.  
355 CARLANNA LAKE ROAD

COMPOSITE UTILITY PLAN  
**C200**

C200 UTILITY PLAN  
2/7/11

BETISWORTH  
P.O. BOX 73909, FAIRBANKS, AK 99707  
(907) 456-5780 VOICEMAIL (907) 451-8822 FAX

WELSHWHITELEY  
350 DOCK STREET #215 KETCHIKAN, ALASKA 99901  
(907) 225-2413 VOICEMAIL (907) 225-2422 FAX