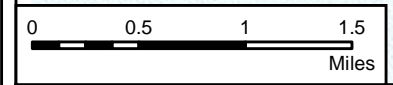
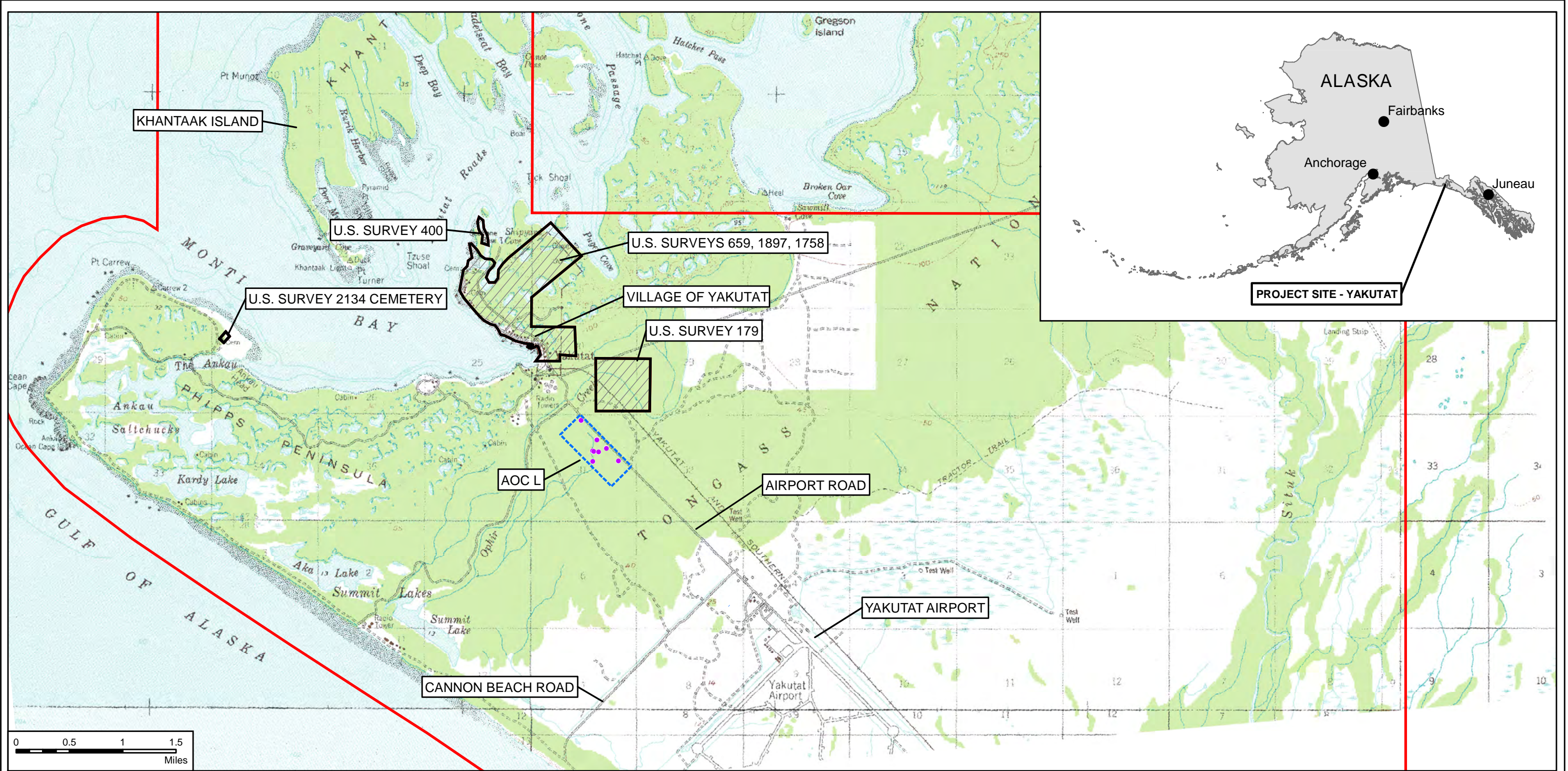


C:_Projects by Location\Yakutat\F10AK0606 Yakutat Air Base\06_L_Concern\ACOR Tank Farm\2.0_RAV02.13 Removal Response Reports\2018 BSI RmA Report_06000_Supp\GIS\MXDs_VERSION_10_000\YAK_FIG_1.mxd



REFERENCES
 BACKGROUND MAPS ARE USGS TOPOGRAPHIC MAPS:
 YAKUTAT B-5, 1959, 1:63,360
 YAKUTAT C-5, 1970, 1:63,360
 YAKUTAT C-4, 1972, 1:63,360
 YAKUTAT, ALASKA 1982, 1:250,000

NOTES
 1. FUDS PROPERTY BOUNDARY IS BASED ON MAP TITLED "REAL ESTATE, YAKUTAT AIR BASE MILITARY RESERVATION" DATED 16 APRIL 1949.

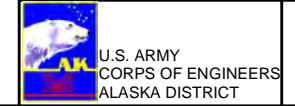
ACRONYMS AND ABBREVIATIONS
 USGS - U.S. GEOLOGICAL SURVEY

LEGEND

- SAMPLE SITE LOCATION
- ▭ FUDS PROPERTY BOUNDARY
- ▭ AREAS OF CONCERN
- ▭ NonFUDS_Prop



LOCATION AND VICINITY MAPS

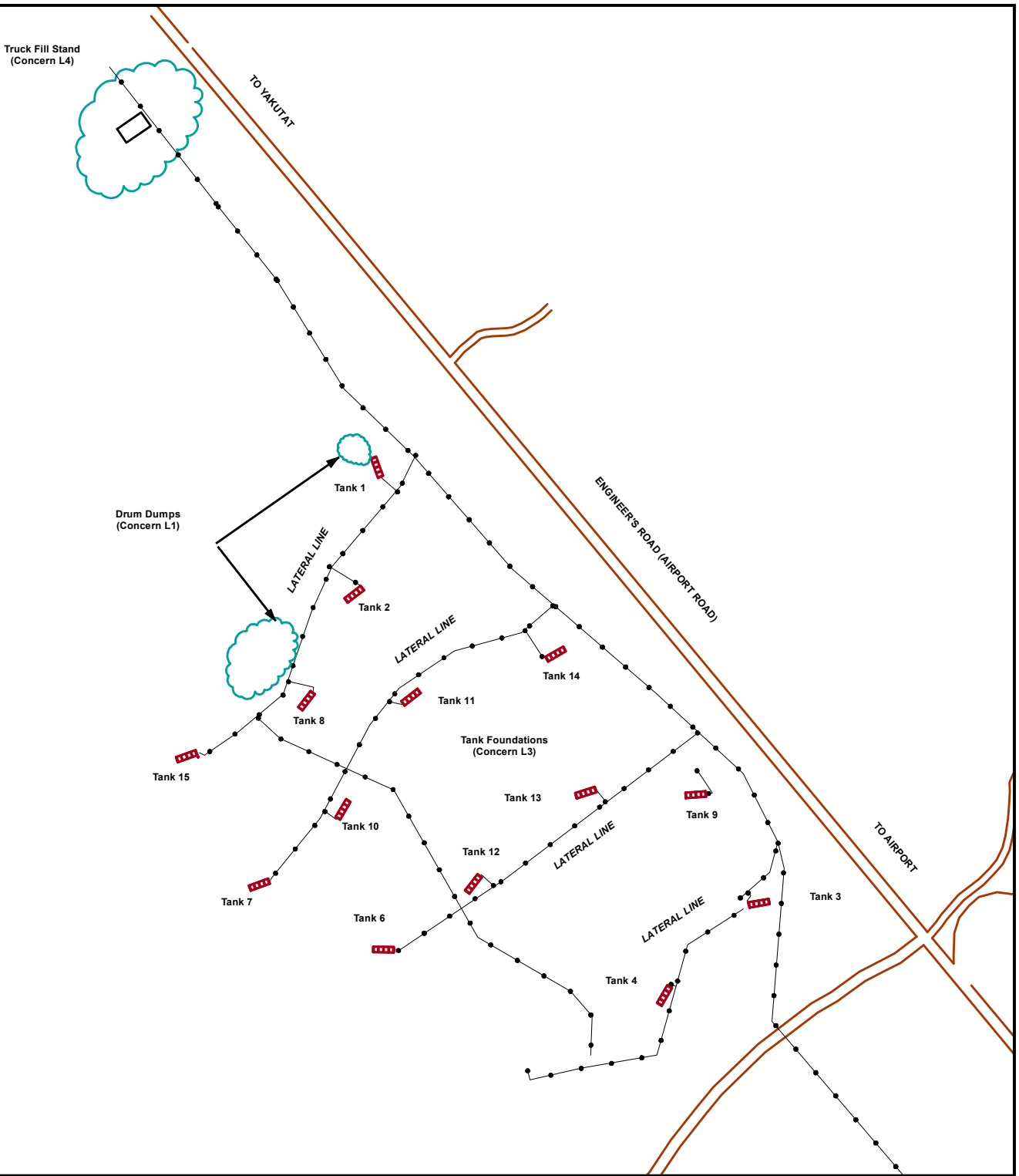
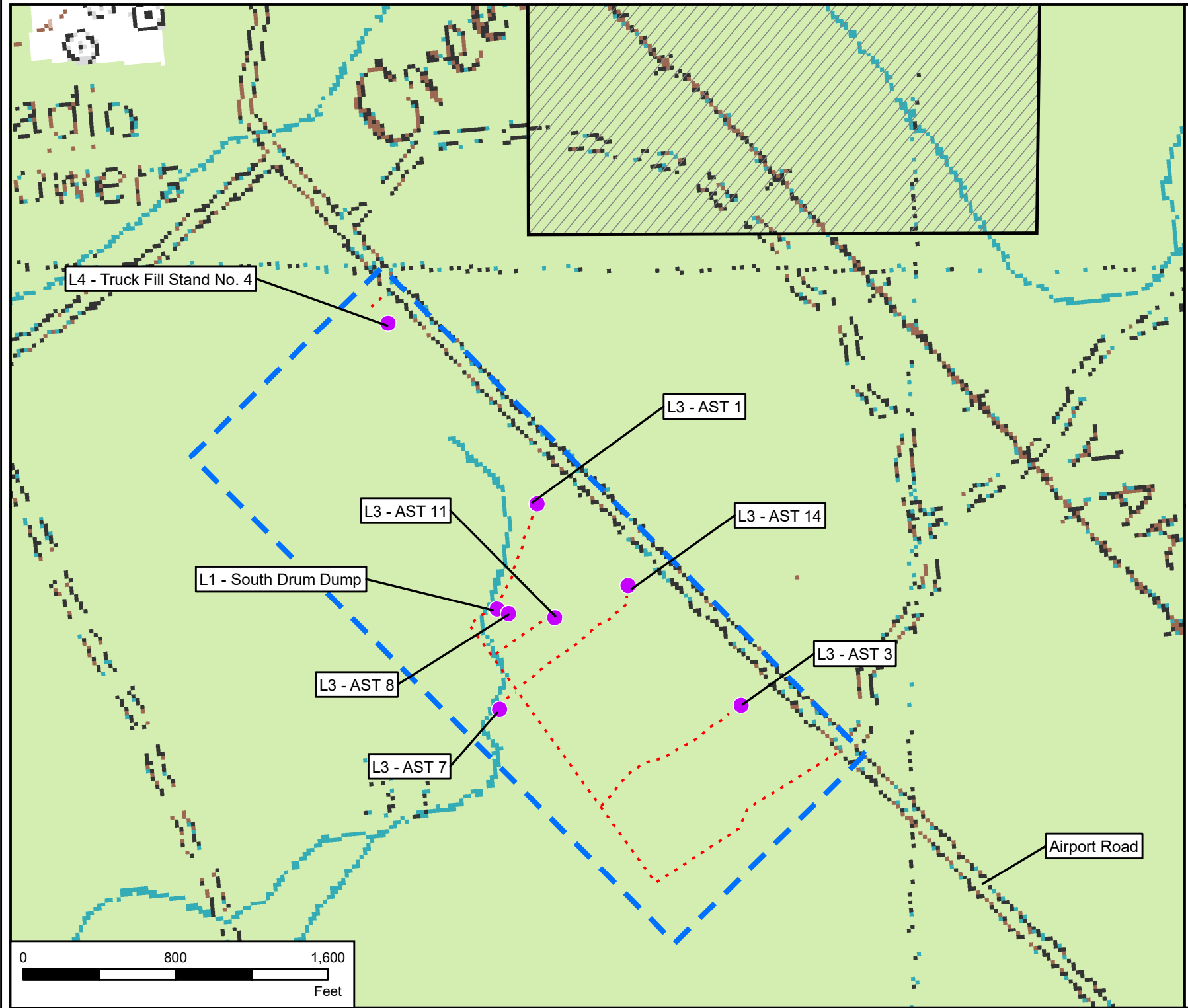


YAKUTAT AIR BASE FUDS - F10AK0606
 YAKUTAT, ALASKA

FIGURE 1

Coordinate System: NAD 1983 StatePlane Alaska 1 FIPS 5001 Feet, Projection: Hotine Oblique Mercator Azimuth Natural Origin, Datum: North American 1983

Document Path: O:_Projects by Location\Yakutat\F10AK0606 Yakutat Air Base\06 L Concern ACOR Tank Farm\2.0 RA02.13 Remedial Response Reports\2016 BSI RmA Report_0500_SupplGISMXDs_VERSION_10_00_V2\YAK_FIG_2_SITE_PLAN_L_CONCERN.mxd



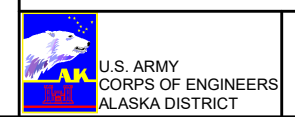
REFERENCES
 BACKGROUND MAPS ARE USGS TOPOGRAPHIC MAPS:
 YAKUTAT B-5, 1959, 1:63,360
 YAKUTAT C-5, 1970, 1:63,360
 YAKUTAT C-4, 1972, 1:63,360
 YAKUTAT, ALASKA 1982, 1:250,000

ACRONYMS AND ABBREVIATIONS
 USGS - U.S. GEOLOGICAL SURVEY
 AST - ABOVE GROUND STORAGE TANK

- LEGEND**
- SITE LOCATION
 - HAUL ROAD AND SPURS
 - ▨ NON-FUDS PARCELS
 - AOC L
 - DRUM DUMPS
 - TANKS
 - 1946 GAS PIPELINE
 - 1946 ROADS



SITE PLAN - CONCERN L - FORMER AIR CORPS OPERATIONS RESERVE TANK FARM

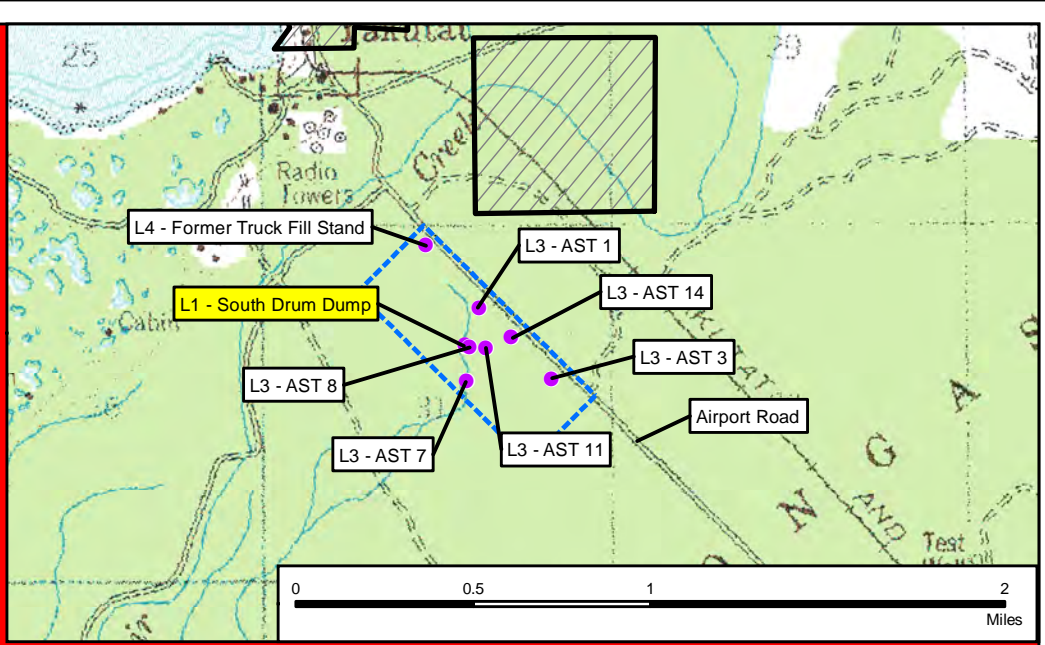
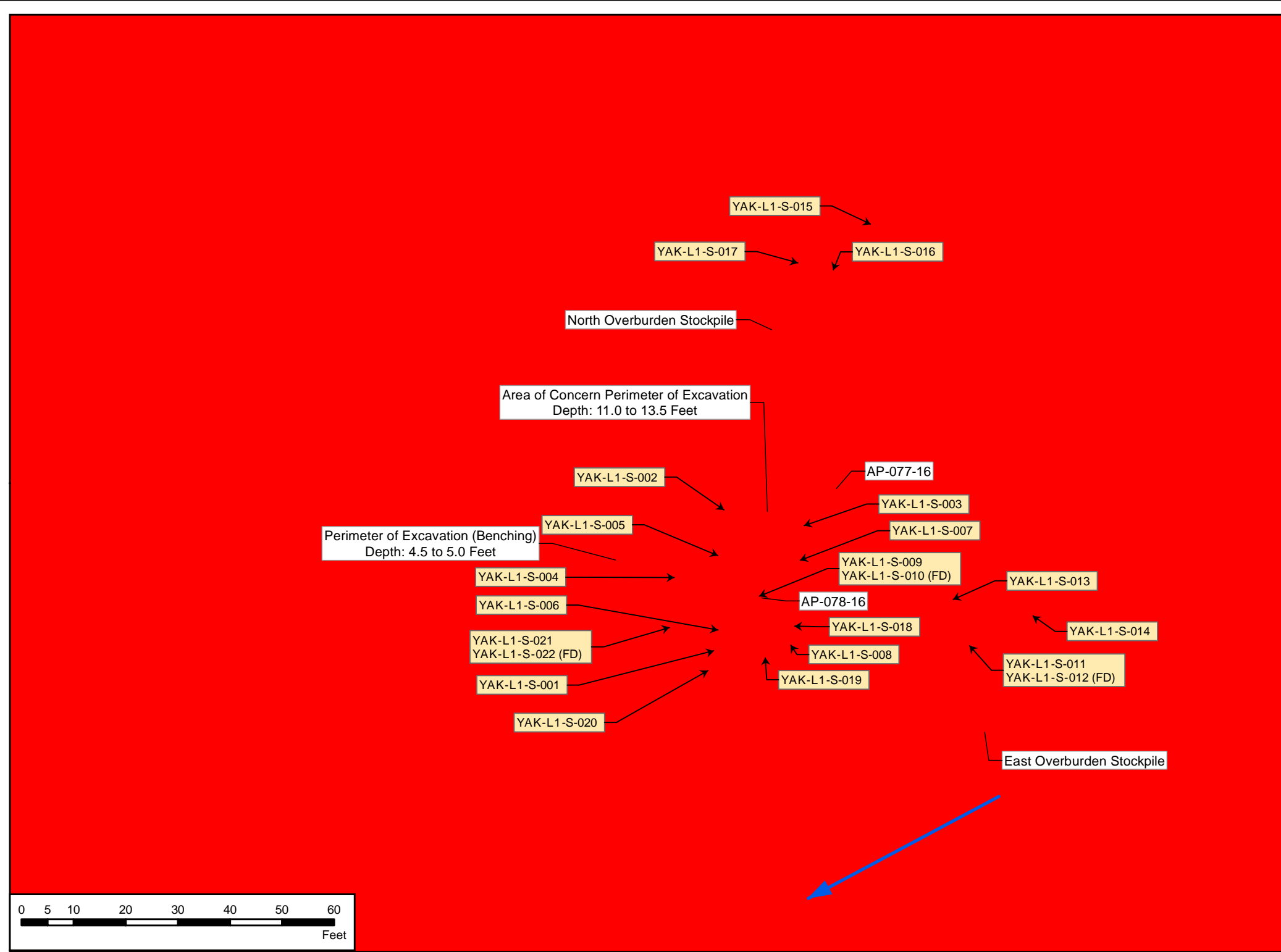


YAKUTAT AIR BASE - F10AK0606-06
 YAKUTAT, ALASKA

FIGURE 2

Coordinate System: NAD 1983 StatePlane Alaska 1 FIPS 5001 Feet, Projection: Hotine Oblique Mercator Azimuth Natural Origin, Datum: North American 1983

C:_Projects by Location\Yakutat\F10AK0606 Yakutat Air Base\06 L Concern_ACOR Tank Farm\2.0 RADZ.13 Removal Response Reports\2018 BSI Rm'A Report_0900_Supp\GIS\MXD\..._VERSION_10_00\YAK_FIG_3_CONCERN_L1_SDD_REV1a_2005SCALE.mxd



Contaminants of Concern Cleanup Levels (CULs)

ANALYTE	UNITS	2008 CUL	2017 CUL
Gasoline Range Organics	mg/kg	260	260
Benzene	mg/kg	0.025	0.022
Ethylbenzene	mg/kg	6.9	0.13
Toluene	mg/kg	6.5	6.7
Xylenes	mg/kg	63	1.5

2008 CUL = ADEC 18 AAC 75 Table B1. Method Two Soil CUL (ADEC 2012)
 2017 CUL = ADEC 18 AAC 75 Table B1. Method Two Soil CUL (ADEC 2017a)
 mg/kg = milligrams/kilogram
 Notes: Sampling locations denoted green = achieved 2008 and 2017 CULs

<p>LEGEND</p> <p>2016 SOIL SAMPLE LOCATIONS AND CHEMICAL CONCENTRATIONS</p> <ul style="list-style-type: none"> ● BELOW CLEANUP LEVEL PERIMETER OF EXCAVATION WATER 	<ul style="list-style-type: none"> FUEL LINE DECOMMISSIONED IN PLACE FUEL LINE REMOVED (2004) MONITORING WELL LOCATION APPROXIMATE GROUNDWATER FLOW DIRECTION <p>NOTE - CHEMICALS TESTED, SEE APPENDIX F: CHEMICAL DATA TABLES</p>		<p>CONCERN L1 - FORMER SOUTH DRUM DUMP</p> <p>YAKUTAT AIR BASE - F10AK0606-06 YAKUTAT, ALASKA</p> <p> U.S. ARMY CORPS OF ENGINEERS ALASKA DISTRICT</p>
---	--	--	---

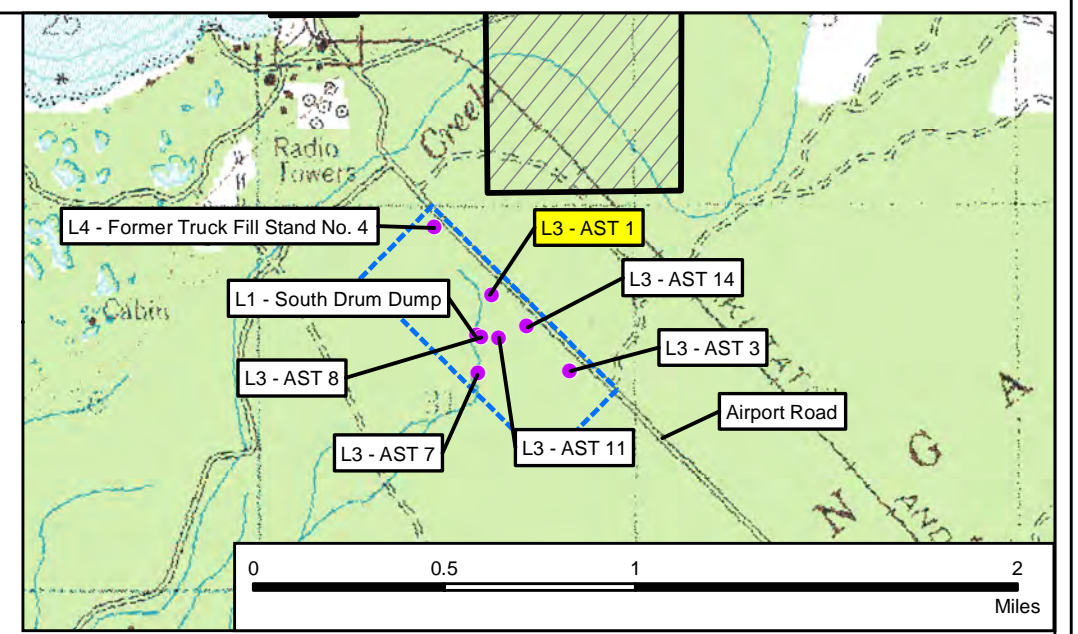
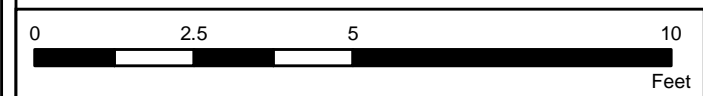
Coordinate System: NAD 1983 StatePlane Alaska 1 FIPS 5001 Feet, Projection: Hotine Oblique Mercator Azimuth Natural Origin, Datum: North American 1983

O:\Projects by Location\Yakutat\F10AK0606 Yakutat Air Base\06 L Concern\ACOR Tank Farm\2.0 RAV\2.13 Removal Response Reports\2018 BSI Rm A Report_0500\Supp\GIS\WXDs_VERSION_10_00\YAK_FIG_4_CONCERN_L3_AST_1_REV1b_30SCALE.mxd

CONCRETE CRADLE FORMER AST 1

Depth: 2.0 to 2.5 Feet

YAK-AST1-S-002
Benzo(a)pyrene
0.234 mg/kg QH
Depth: 1 foot



Contaminants of Concern Cleanup Levels (CULs)			
ANALYTE	UNITS	2008 CUL	2017 CUL
Gasoline Range Organics	mg/kg	260	260
Benzo(a)anthracene	mg/kg	0.36	0.28
Benzo(a)pyrene	mg/kg	0.4	0.17
Benzene	mg/kg	0.025	0.022
Toluene	mg/kg	6.5	6.7

2008 CUL = ADEC 18 AAC 75 Table B1. Method Two Soil CUL (ADEC 2012)
 2017 CUL = ADEC 18 AAC 75 Table B1. Method Two Soil CUL (ADEC 2017a)
 mg/kg = milligrams/kilogram

Notes:
 Sampling locations denoted green = achieved 2008 and 2017 CULs
 Sampling locations denoted light blue = achieved 2008 CUL but contain one or more constituents above 2017 CULs

LEGEND

● 2016 SOIL SAMPLE LOCATIONS AND CHEMICAL CONCENTRATIONS	↯ FUEL LINE REMOVED (2004)
● BELOW CLEANUP LEVEL	⊙ MONITORING WELL LOCATION
● ABOVE 2017 CLEANUP LEVEL	← APPROXIMATE GROUNDWATER FLOW DIRECTION
□ PERIMETER OF EXCAVATION	

NOTE - CHEMICALS TESTED, SEE APPENDIX F: CHEMICAL DATA TABLES

N

CONCERN L3 - FORMER AST 1

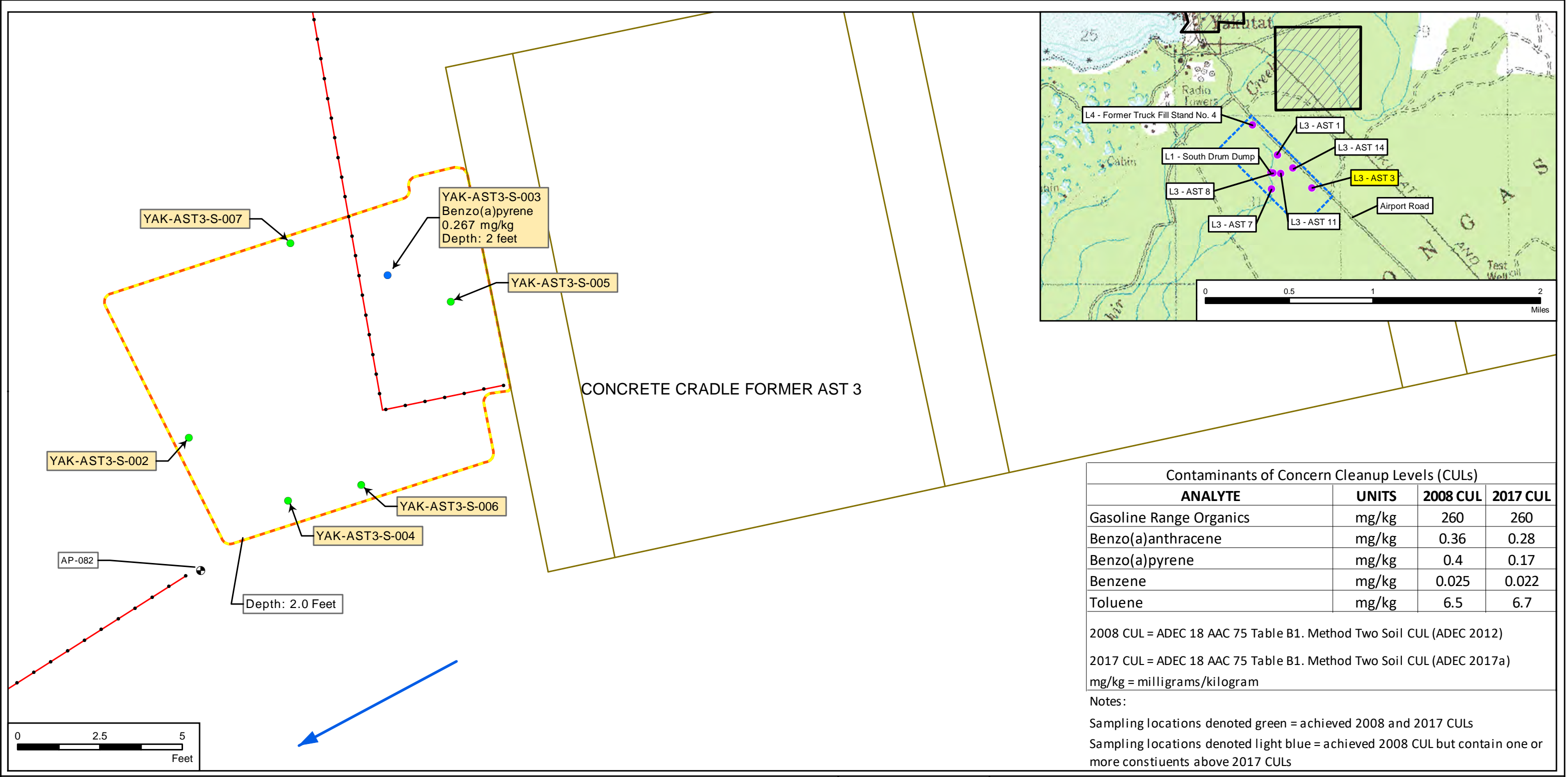
YAKUTAT AIR BASE - F10AK0606-06
YAKUTAT, ALASKA

FIGURE 4

U.S. ARMY
CORPS OF ENGINEERS
ALASKA DISTRICT

Coordinate System: NAD 1983 StatePlane Alaska 1 FIPS 5001 Feet, Projection: Hotine Oblique Mercator Azimuth Natural Origin, Datum: North American 1983

C:\Projects by Location\Yakutat\F10AK0606 Yakutat Air Base\06 L Concern\ACOR Tank Farm\2.0 RA\02.13 Removal Response Reports\2018 BSI Rm\Report_05001_Supp\GIS\MXDs_VERSION_10_00\YAK_FIG_5_CONCERN_L3_AST_3_REV1b_35SCALE.mxd



YAK-AST3-S-003
Benzo(a)pyrene
0.267 mg/kg
Depth: 2 feet

YAK-AST3-S-007

YAK-AST3-S-005

YAK-AST3-S-002

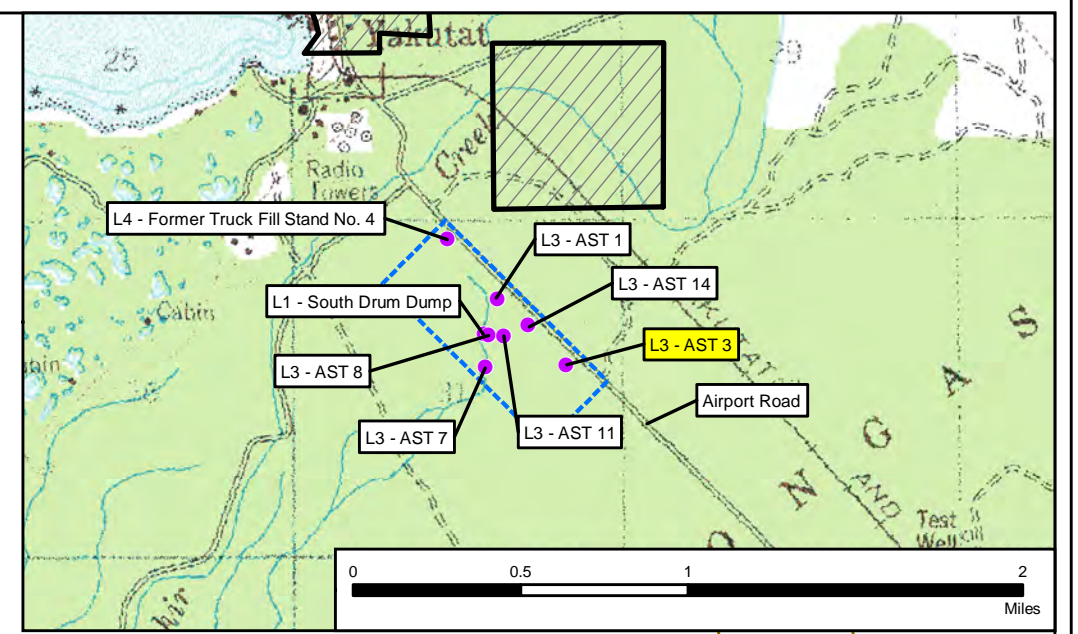
YAK-AST3-S-006

YAK-AST3-S-004

AP-082

Depth: 2.0 Feet

CONCRETE CRADLE FORMER AST 3



Contaminants of Concern Cleanup Levels (CULs)			
ANALYTE	UNITS	2008 CUL	2017 CUL
Gasoline Range Organics	mg/kg	260	260
Benzo(a)anthracene	mg/kg	0.36	0.28
Benzo(a)pyrene	mg/kg	0.4	0.17
Benzene	mg/kg	0.025	0.022
Toluene	mg/kg	6.5	6.7

2008 CUL = ADEC 18 AAC 75 Table B1. Method Two Soil CUL (ADEC 2012)
 2017 CUL = ADEC 18 AAC 75 Table B1. Method Two Soil CUL (ADEC 2017a)
 mg/kg = milligrams/kilogram


Notes:
 Sampling locations denoted green = achieved 2008 and 2017 CULs
 Sampling locations denoted light blue = achieved 2008 CUL but contain one or more constituents above 2017 CULs

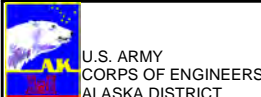
LEGEND

● 2016 SOIL SAMPLE LOCATIONS AND CHEMICAL CONCENTRATIONS	⚡ FUEL LINE REMOVED (2004)
● BELOW CLEANUP LEVEL	⊕ MONITORING WELL LOCATION
● ABOVE 2017 CLEANUP LEVEL	← APPROXIMATE GROUNDWATER FLOW DIRECTION
□ PERIMETER OF EXCAVATION	

NOTE - CHEMICALS TESTED, SEE APPENDIX F: CHEMICAL DATA TABLES

CONCERN L3 - FORMER AST 3





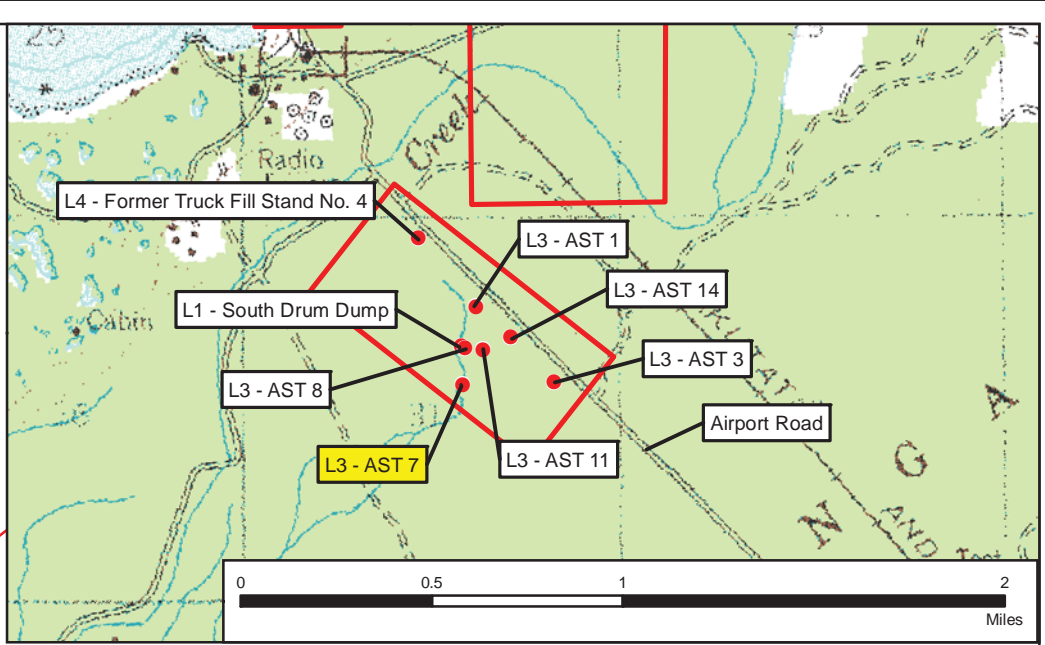
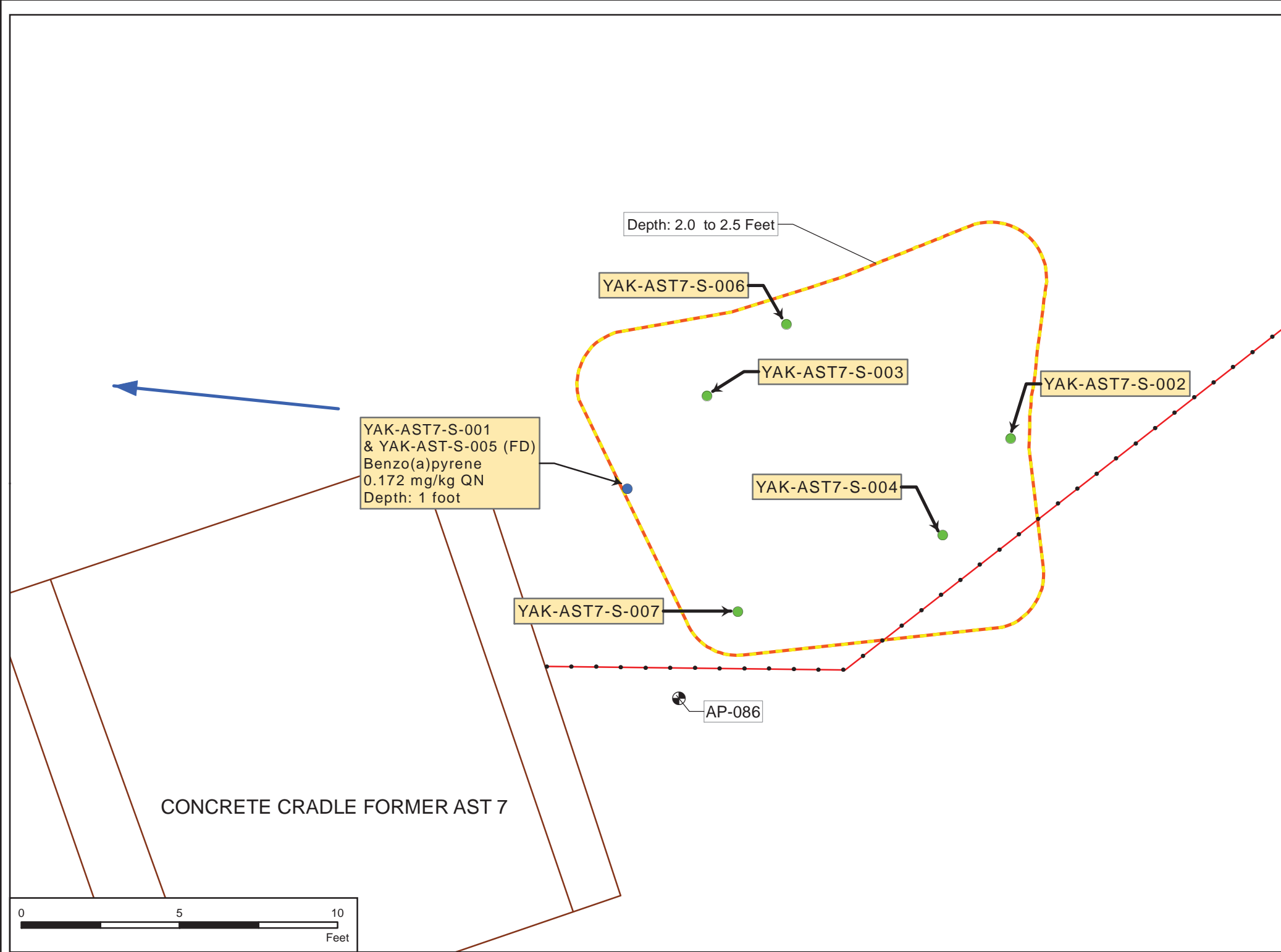
U.S. ARMY
CORPS OF ENGINEERS
ALASKA DISTRICT

YAKUTAT AIR BASE - F10AK0606-06
YAKUTAT, ALASKA

FIGURE 5

Coordinate System: NAD 1983 StatePlane Alaska 1 FIPS 5001 Feet, Projection: Hotine Oblique Mercator Azimuth Natural Origin, Datum: North American 1983

T:\GIS\Projects\0336366_Yakutat_Air_Base_SWD\Deliverables_Final\JUNE_2017_DELIVERABLES_BACKUP\YAKUTAT_MXD\2YAK_FIG_6_CONCERN_L3_AST_7_REV1b_35SCALE.mxd



Contaminants of Concern Cleanup Levels (CULs)			
ANALYTE	UNITS	2008 CUL	2017 CUL
Gasoline Range Organics	mg/kg	260	260
Benzo(a)anthracene	mg/kg	0.36	0.28
Benzo(a)pyrene	mg/kg	0.4	0.17
Benzene	mg/kg	0.025	0.022
Toluene	mg/kg	6.5	6.7

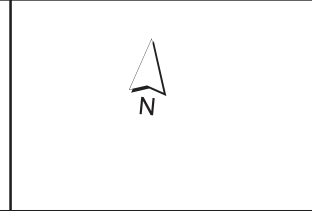
2008 CUL = ADEC 18 AAC 75 Table B1. Method Two Soil CUL (ADEC 2012)
 2017 CUL = ADEC 18 AAC 75 Table B1. Method Two Soil CUL (ADEC 2017a)
 mg/kg = milligrams/kilogram

Notes:
 Sampling locations denoted green = achieved 2008 and 2017 CULs
 Sampling locations denoted light blue = achieved 2008 CUL but contain one or more constituents above 2017 CULs

LEGEND

- 2016 SOIL SAMPLE LOCATIONS AND CHEMICAL CONCENTRATIONS
- BELOW CLEANUP LEVEL
- ABOVE 2017 CLEANUP LEVEL
- PERIMETER OF EXCAVATION
- FUEL LINE REMOVED (2004)
- ⊙ MONITORING WELL LOCATION
- ← APPROXIMATE GROUNDWATER FLOW DIRECTION

NOTE - CHEMICALS TESTED, SEE APPENDIX F: CHEMICAL DATA TABLES



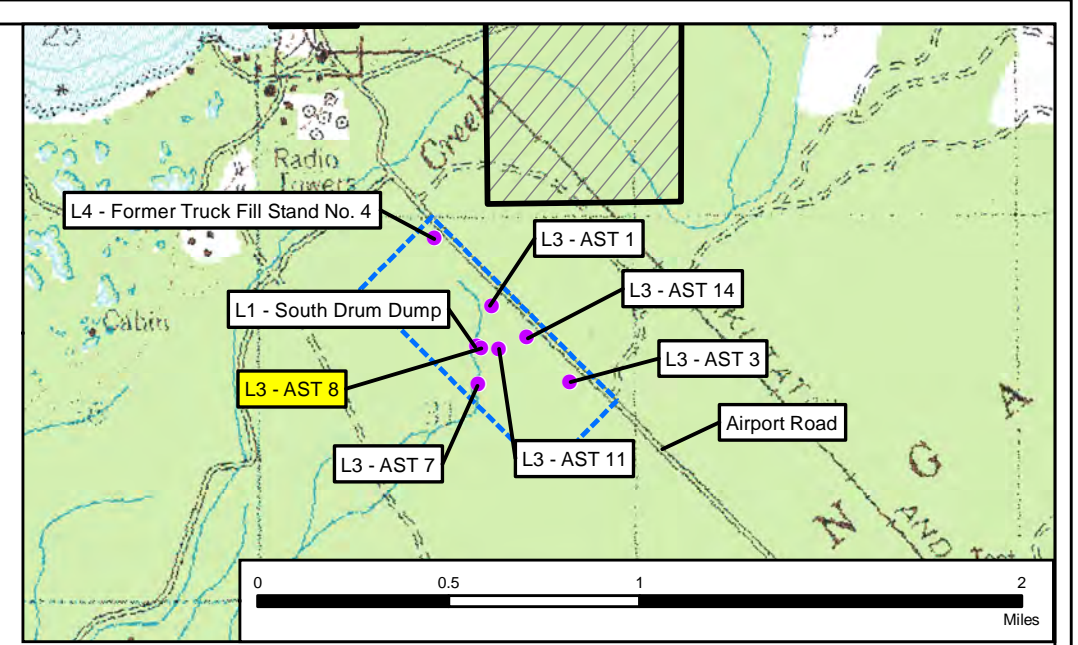
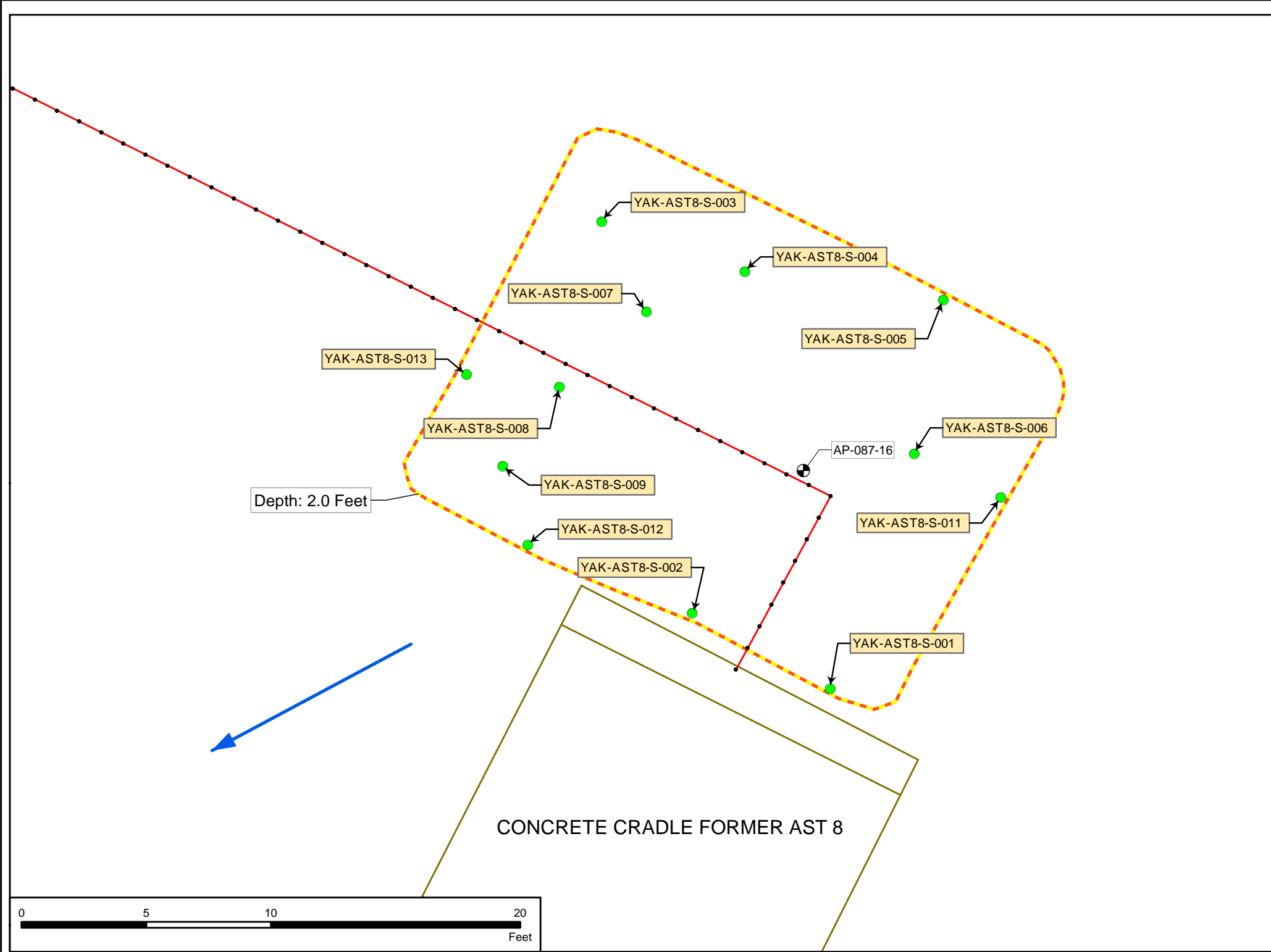
CONCERN L3 - FORMER AST 7

U.S. ARMY
CORPS OF ENGINEERS
ALASKA DISTRICT

YAKUTAT AIR BASE - F10AK0606-06
YAKUTAT, ALASKA

FIGURE 6

C:_Projects by Location\Yakutat\F10AK0606 Yakutat Air Base\06 L Concern ACOR Tank Farm\2018\RA02_13 Removal Response Reports\2018 BSI Rm Report_0500_Supp\GIS\MXDs_VERSION_10_00\YAK_FIG_7_CONCERN_L3_AST_8_REV1b_57SCALE.mxd



Contaminants of Concern Cleanup Levels (CULs)			
ANALYTE	UNITS	2008 CUL	2017 CUL
Gasoline Range Organics	mg/kg	260	260
Benzo(a)anthracene	mg/kg	0.36	0.28
Benzo(a)pyrene	mg/kg	0.4	0.17
Benzene	mg/kg	0.025	0.022
Toluene	mg/kg	6.5	6.7

2008 CUL = ADEC 18 AAC 75 Table B1. Method Two Soil CUL (ADEC 2012)
 2017 CUL = ADEC 18 AAC 75 Table B1. Method Two Soil CUL (ADEC 2017a)
 mg/kg = milligrams/kilogram

Notes:
 Sampling locations denoted green = achieved 2008 and 2017 CULs
 Sampling locations denoted light blue = achieved 2008 CUL but contain one or more constituents above 2017 CULs

LEGEND

● 2016 SOIL SAMPLE LOCATIONS AND CHEMICAL CONCENTRATIONS	● BELOW CLEANUP LEVEL	— FUEL LINE REMOVED (2004)	⊕ MONITORING WELL LOCATION
□ PERIMETER OF EXCAVATION	← APPROXIMATE GROUNDWATER FLOW DIRECTION	NOTE - CHEMICALS TESTED, SEE APPENDIX F: CHEMICAL DATA TABLES	

CONCERN L3 - FORMER AST 8

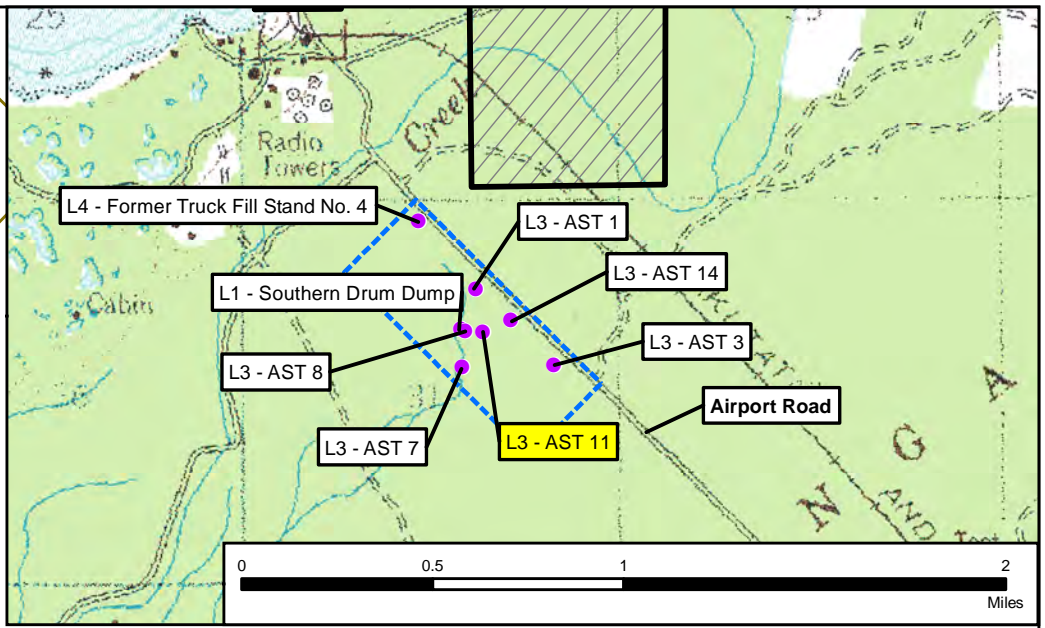
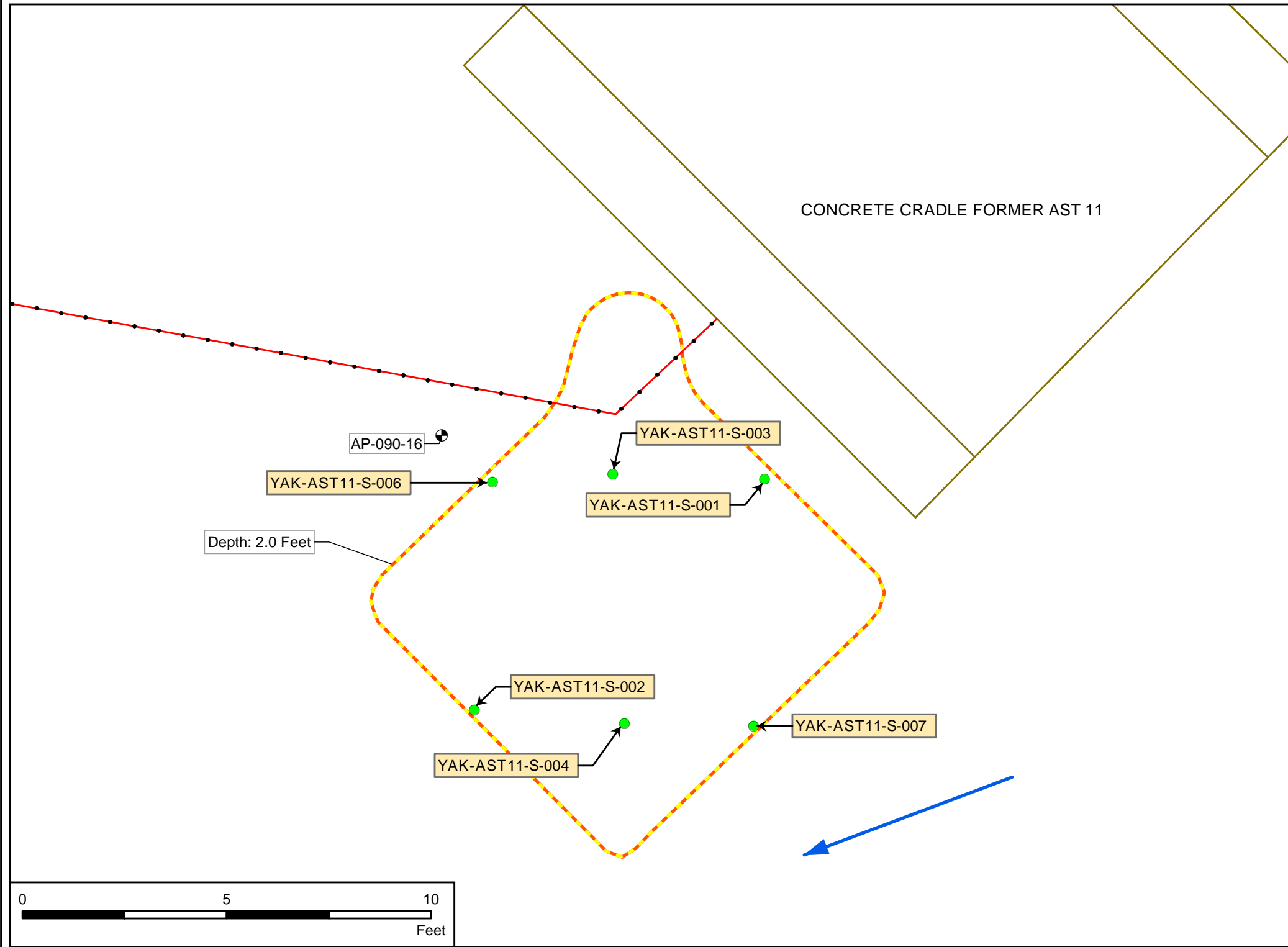
YAKUTAT AIR BASE - F10AK0606-06
YAKUTAT, ALASKA

FIGURE 7

U.S. ARMY
CORPS OF ENGINEERS
ALASKA DISTRICT

Coordinate System: NAD 1983 StatePlane Alaska 1 FIPS 5001 Feet, Projection: Hotine Oblique Mercator Azimuth Natural Origin, Datum: North American 1983

C:\Projects by Location\Yakutat\F10AK0606 Yakutat Air Base\06 L Concern ACOR Tank Farm 2.0 RA02.13 Removal Response Reports\2018 BSI Rm A Report_0500_SuppGISMXDs_VERSION_10_00YAK_FIG_8_CONCERN_L3_AST_11_REV1b_35SCALE.mxd



Contaminants of Concern Cleanup Levels (CULs)			
ANALYTE	UNITS	2008 CUL	2017 CUL
Gasoline Range Organics	mg/kg	260	260
Benzo(a)anthracene	mg/kg	0.36	0.28
Benzo(a)pyrene	mg/kg	0.4	0.17
Benzene	mg/kg	0.025	0.022
Toluene	mg/kg	6.5	6.7

2008 CUL = ADEC 18 AAC 75 Table B1. Method Two Soil CUL (ADEC 2012)
 2017 CUL = ADEC 18 AAC 75 Table B1. Method Two Soil CUL (ADEC 2017a)
 mg/kg = milligrams/kilogram

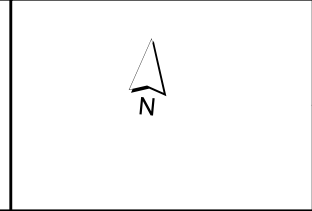
Notes:
 Sampling locations denoted green = achieved 2008 and 2017 CULs
 Sampling locations denoted light blue = achieved 2008 CUL but contain one or more constituents above 2017 CULs

LEGEND

2016 SOIL SAMPLE LOCATIONS AND CHEMICAL CONCENTRATIONS

- BELOW CLEANUP LEVEL
- PERIMETER OF EXCAVATION
- FUEL LINE REMOVED (2004)
- MONITORING WELL LOCATION
- APPROXIMATE GROUNDWATER FLOW DIRECTION

NOTE - CHEMICALS TESTED, SEE APPENDIX F: CHEMICAL DATA TABLES



CONCERN L3 - FORMER AST 11

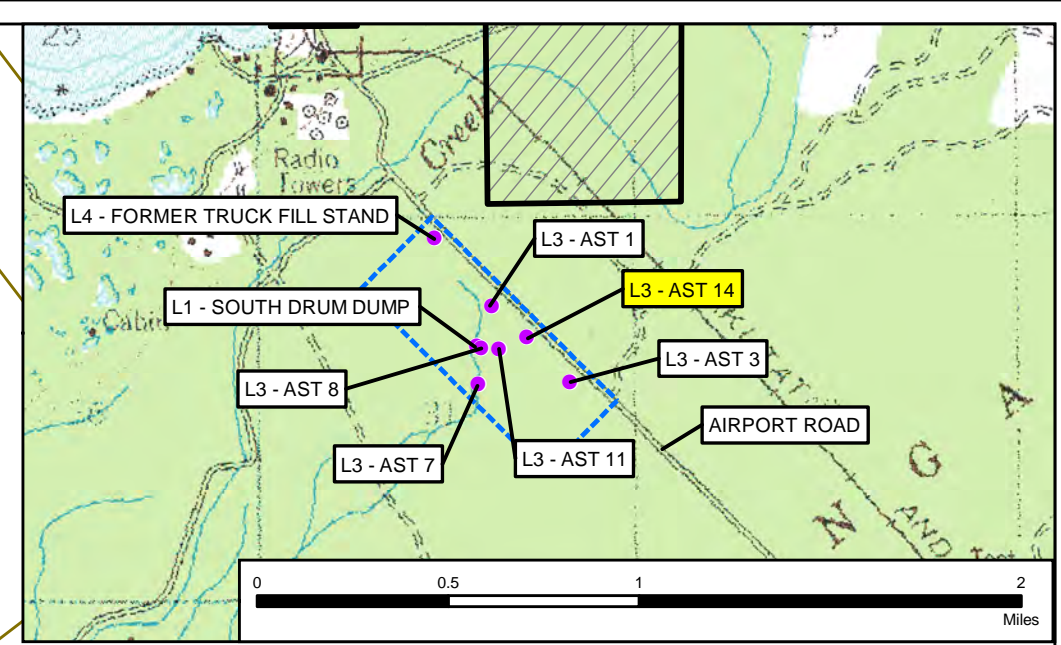
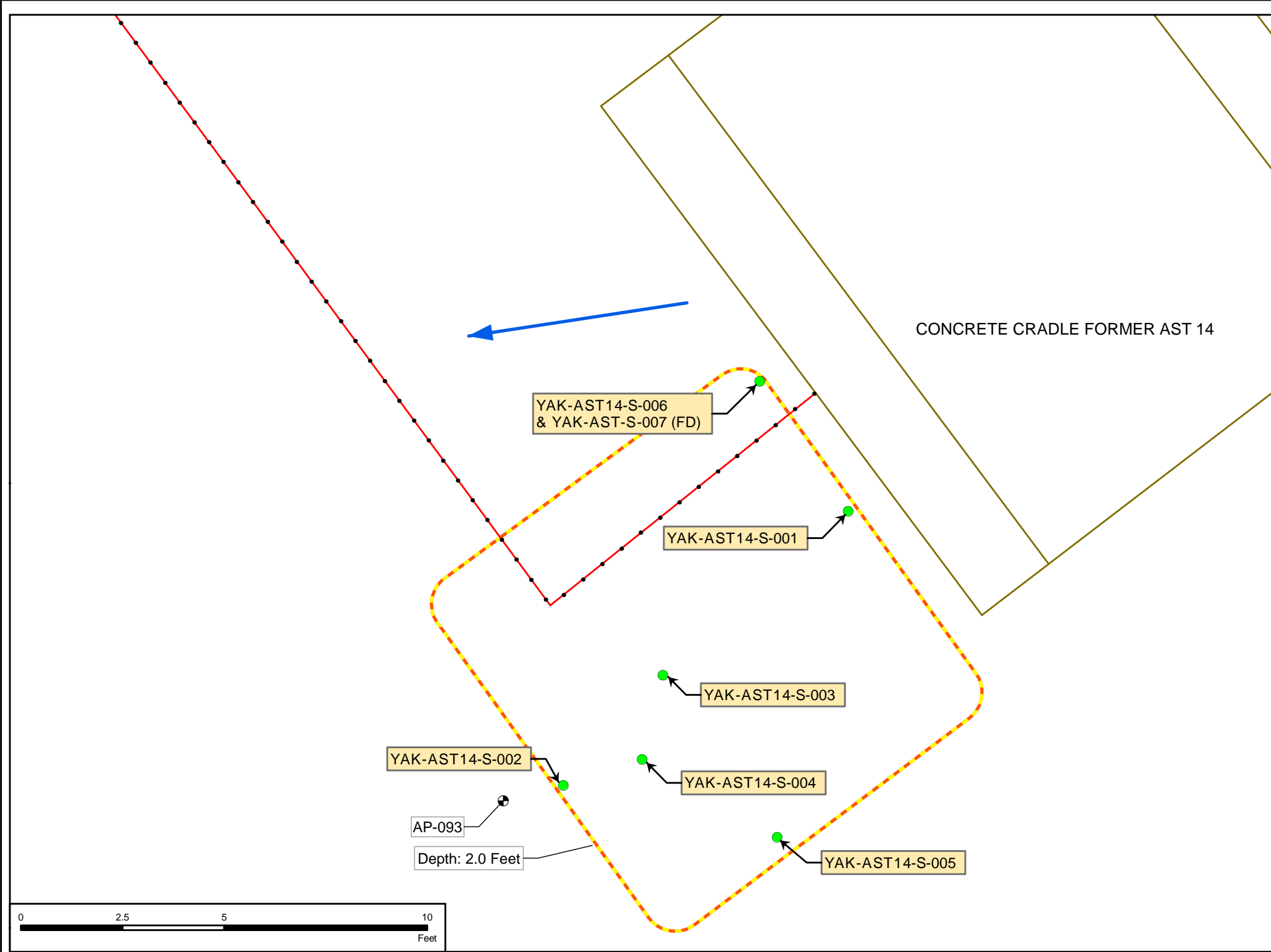
YAKUTAT AIR BASE - F10AK0606-06
YAKUTAT, ALASKA

FIGURE 8

U.S. ARMY
CORPS OF ENGINEERS
ALASKA DISTRICT

Coordinate System: NAD 1983 StatePlane Alaska 1 FIPS 5001 Feet, Projection: Hotine Oblique Mercator Azimuth Natural Origin, Datum: North American 1983

O:_Projects by Location\Yakutat\F10AK0606 Yakutat Air Base\06 L Concern_A COR Tank Farm\2.0 RA\02.13 Removal Response Reports\2018 BSI Rm A Report_05000_Supp\GIS\MXD\VERSION_10_00\YAK_FIG_9_CONCERN_L3_AST_14_REV1b_35SCALE.mxd



Contaminants of Concern Cleanup Levels (CULs)			
ANALYTE	UNITS	2008 CUL	2017 CUL
Gasoline Range Organics	mg/kg	260	260
Benzo(a)anthracene	mg/kg	0.36	0.28
Benzo(a)pyrene	mg/kg	0.4	0.17
Benzene	mg/kg	0.025	0.022
Toluene	mg/kg	6.5	6.7

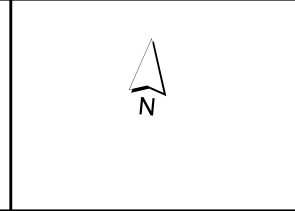
2008 CUL = ADEC 18 AAC 75 Table B1. Method Two Soil CUL (ADEC 2012)
 2017 CUL = ADEC 18 AAC 75 Table B1. Method Two Soil CUL (ADEC 2017a)
 mg/kg = milligrams/kilogram

Notes:
 Sampling locations denoted green = achieved 2008 and 2017 CULs
 Sampling locations denoted light blue = achieved 2008 CUL but contain one or more constituents above 2017 CULs

LEGEND

● 2016 SOIL SAMPLE LOCATIONS AND CHEMICAL CONCENTRATIONS	● BELOW CLEANUP LEVEL	— FUEL LINE REMOVED (2004)
□ PERIMETER OF EXCAVATION	● MONITORING WELL LOCATION	← APPROXIMATE GROUNDWATER FLOW DIRECTION

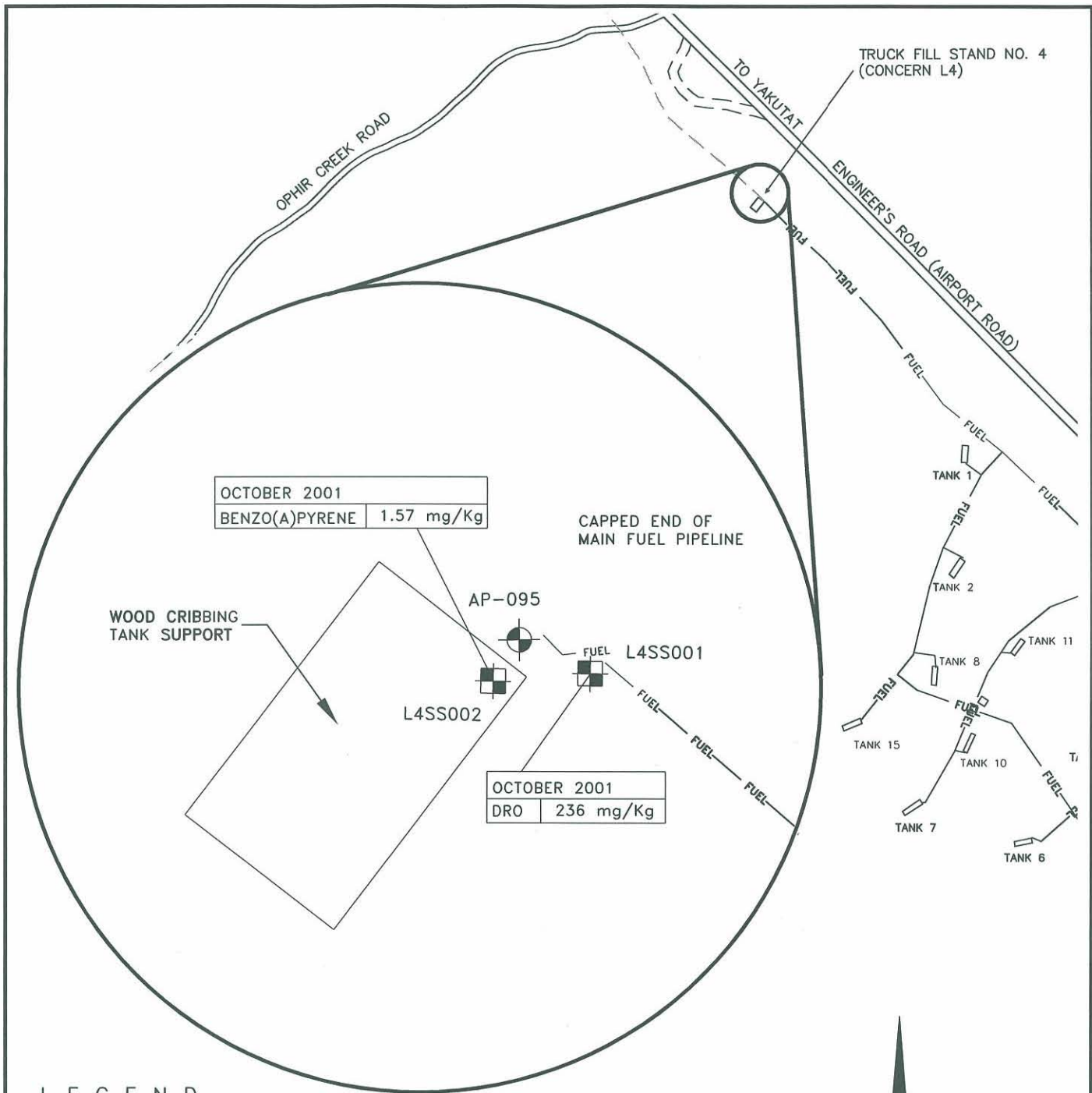
NOTE - CHEMICALS TESTED, SEE APPENDIX F: CHEMICAL DATA TABLES



CONCERN L3 - FORMER AST 14

<p>U.S. ARMY CORPS OF ENGINEERS ALASKA DISTRICT</p>	YAKUTAT AIR BASE - F10AK0606-06 YAKUTAT, ALASKA	FIGURE 9
---	--	-----------------

Coordinate System: NAD 1983 StatePlane Alaska 1 FIPS 5001 Feet, Projection: Hotine Oblique Mercator Azimuth Natural Origin, Datum: North American 1983



LEGEND

- MONITORING WELL LOCATION
- SURFACE SOIL SAMPLE LOCATION
- TANK FOUNDATION
- PRESUMED FUEL LINE LOCATION
- PRESUMED ABANDONED FUEL LINE

DRO = DIESEL RANGE ORGANICS
 NOTES: SEE FIGURE 3-10 FOR GENERAL LOCATION
 SOURCE: McCLINTOCK LAND ASSOCIATES



0 250 500

APPROX. SCALE OF DRAWING IN FEET

0 10 20

APPROX. SCALE OF INSET IN FEET

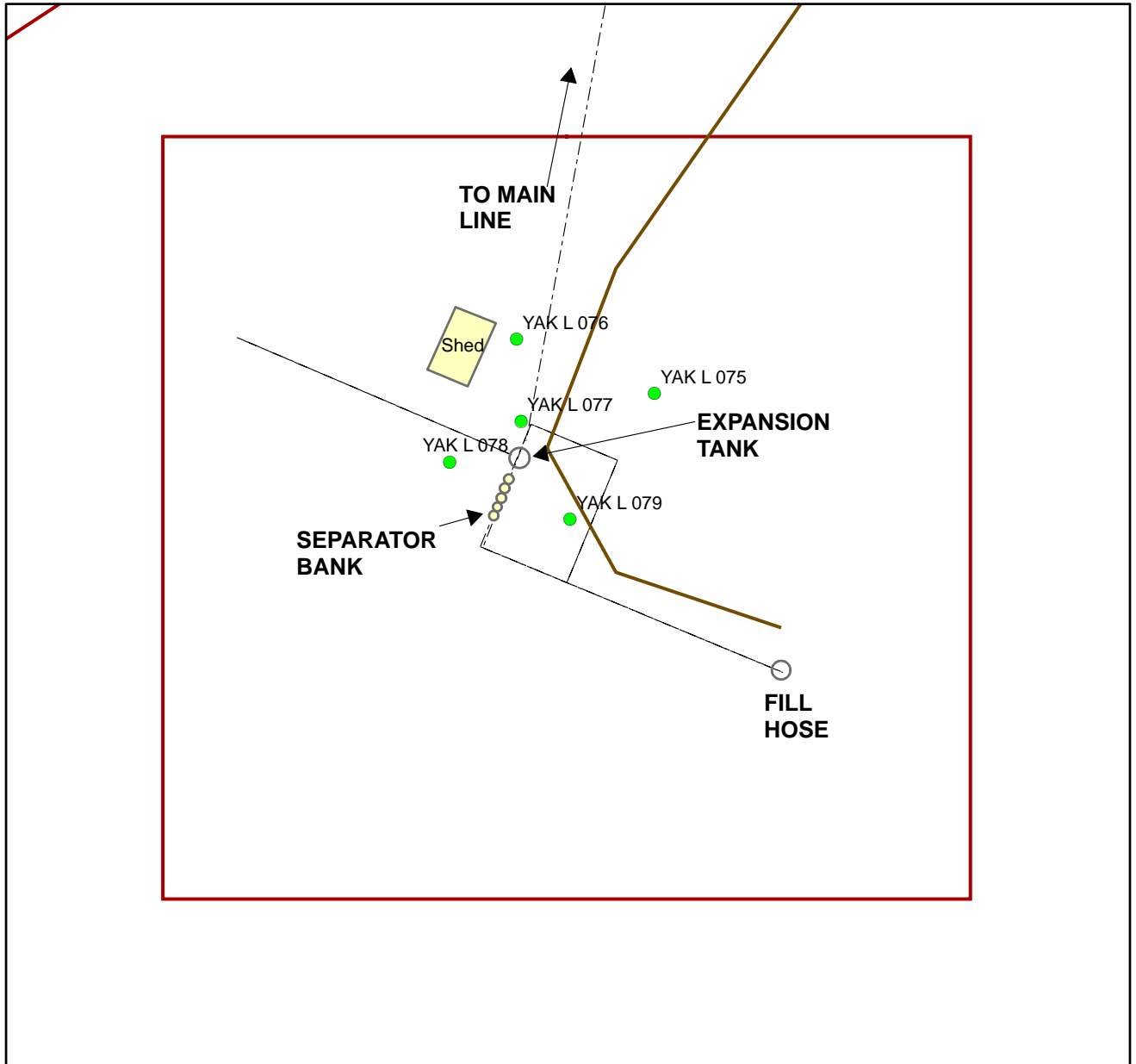
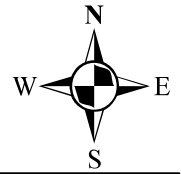


4600 BUSINESS PARK BLVD., #22
 ANCHORAGE, AK 99503
 (907) 561-5700
 FAX: (907) 273-4555



FILE: 01F-L4 DRAWN: MNS
 C/SC: 1:1PS ZIP: NA
 DATE: 03/31/03 CHECK: J.HARGY

FIGURE 3-14
 AIR CORPS OPERATIONS
 RESERVE TANK FARM
 TRUCK FILL STAND NO. 4
 CONCERN L4

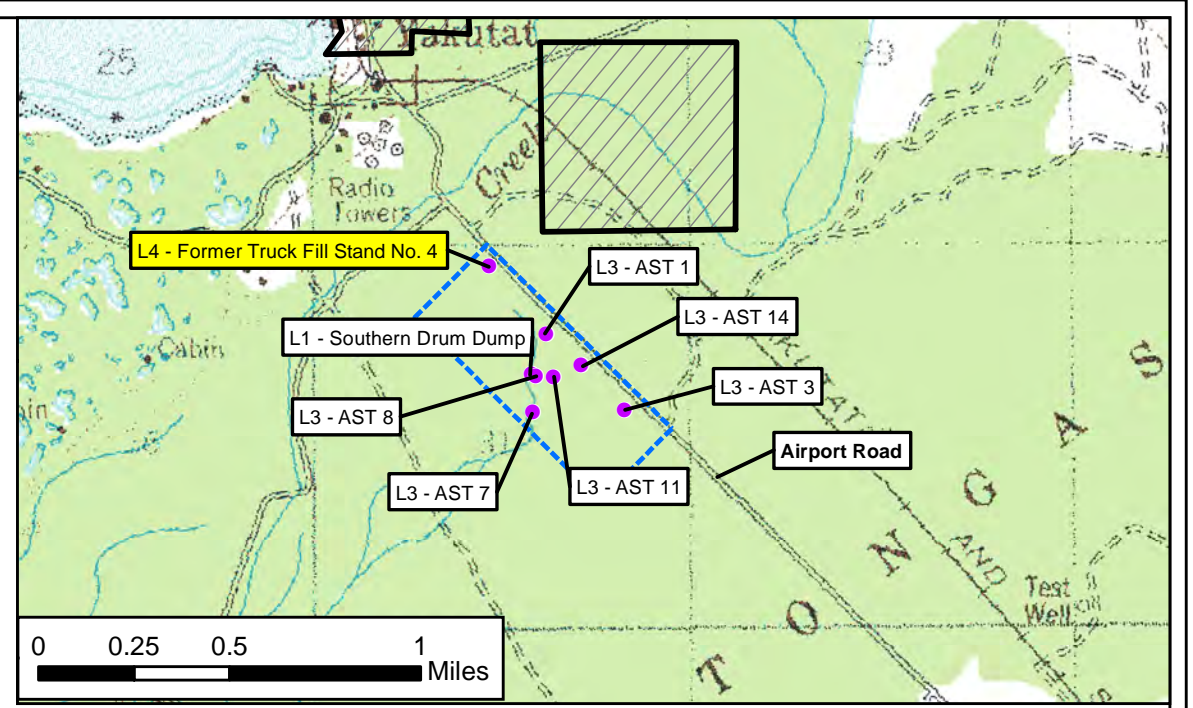
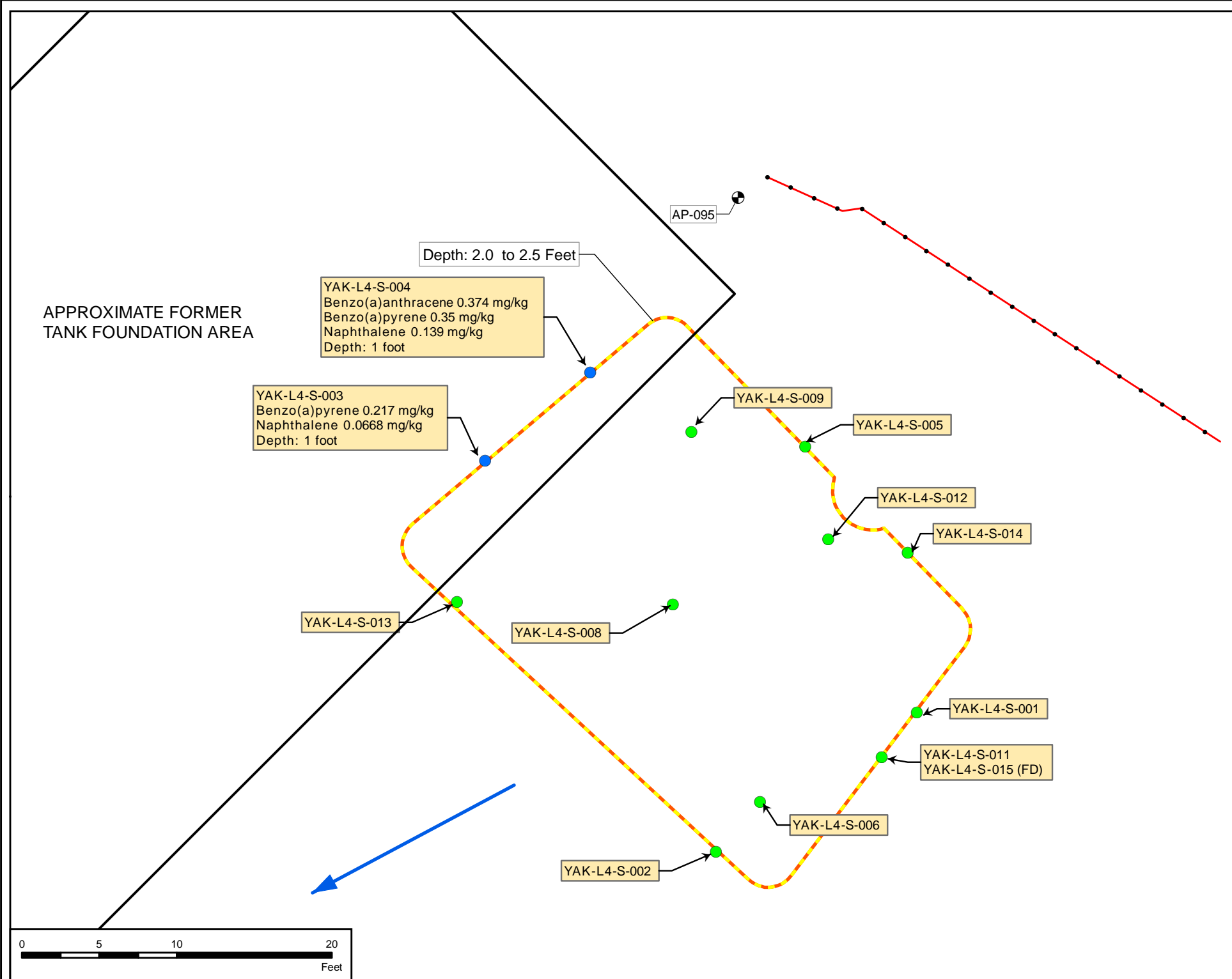
**2001 REMEDIAL INVESTIGATION
 FINAL REPORT**
 YAKUTAT AREA RI/FS
 YAKUTAT, ALASKA
 PROJECT 9000-216-334



Legend	
% Fluorescence	⊕ Monitoring Well
● 0 - 3	— Trails
▲ 4 - 11	--- Former Pipelines

FIGURE 9-12		
Concern L - ROST/LIF Probe Results Truck Fill Stand Former Yakutat Air Force Base		
 US Army Corps of Engineers Alaska District	0 5 10 15  Feet 1 inch equals 15 feet	Site: Yakutat AFB Drawn: LKG Date: 3/2006

O:_Projects by Location\Yakutat\F10AK0606 Yakutat Air Base\06 L Concern\ACOR Tank Farm\2.0 RA\02.0 RA\02.13 Removal Response Reports\2018 BSI Rm\Report_05000_SuppGISMXDs_VERSION_10_00\YAK_FIG_10_CONCERN_L4_TFS_REV1b_95SCALE.mxd



Contaminants of Concern Cleanup Levels (CULs)			
ANALYTE	UNITS	2008 CUL	2017 CUL
Gasoline Range Organics	mg/kg	260	260
Benzo(a)anthracene	mg/kg	0.36	0.28
Benzo(a)pyrene	mg/kg	0.4	0.17
Benzene	mg/kg	0.025	0.022
Toluene	mg/kg	6.5	6.7

2008 CUL = ADEC 18 AAC 75 Table B1. Method Two Soil CUL (ADEC 2012)

2017 CUL = ADEC 18 AAC 75 Table B1. Method Two Soil CUL (ADEC 2017a)

mg/kg = milligrams/kilogram

Notes:

Sampling locations denoted green = achieved 2008 and 2017 CULs

Sampling locations denoted light blue = achieved 2008 CUL but contain one or more constituents above 2017 CULs

LEGEND

2016 SOIL SAMPLE LOCATIONS AND CHEMICAL CONCENTRATIONS

- BELOW CLEANUP LEVEL
- ABOVE 2017 CLEANUP LEVEL
- PERIMETER OF EXCAVATION
- FUEL LINE REMOVED (2004)
- MONITORING WELL LOCATION
- APPROXIMATE GROUNDWATER FLOW DIRECTION

NOTE - CHEMICALS TESTED, SEE APPENDIX F: CHEMICAL DATA TABLES

CONCERN L4 - FORMER TRUCK FILL STAND NO. 4

N

U.S. ARMY
CORPS OF ENGINEERS
ALASKA DISTRICT

YAKUTAT AIR BASE - F10AK0606-06
YAKUTAT, ALASKA

FIGURE 10

Coordinate System: NAD 1983 StatePlane Alaska 1 FIPS 5001 Feet, Projection: Hotine Oblique Mercator Azimuth Natural Origin, Datum: North American 1983