



**Stantec Consulting Services Inc.**  
725 East Fireweed Lane Suite 200, Anchorage AK 99503-2245

February 4, 2021

Stantec Project Number: 185704928

Anastasia Duarte, REHS/RS  
Retail Environmental Remediation Administrator, Pacific Division  
Speedway LLC  
18336 Aurora Avenue North, Suite 105, #65028  
Shoreline, Washington 981330-9996

RE: ***2021 Corrective Action Plan***

***Speedway Store 5310 (formerly Tesoro 2 Go Mart 112)***  
3392 Badger Road, North Pole, Alaska  
ADEC Facility ID #11116; ADEC File #100.26.159

Dear Ms. Duarte:

This letter presents the proposed work plan tasks for the 2021 (calendar year) Corrective Action Plan (CAP) pertaining to monitoring and remediation of contamination at the above referenced site. This 2021 CAP will be presented at the annual work session with the Alaska Department of Environmental Conservation (ADEC), Speedway LLC and Stantec Consulting Services Inc. (Stantec). The work session is scheduled for February 4, 2021, and will be presented virtually by Stantec via Microsoft Teams app.

The following sections provide a summary of the work plan tasks that were completed under the ADEC approved 2020 CAP and the proposed work plan tasks for the 2021 CAP. Attached to this letter are the project site plans and analytical test results for samples collected during the completion of the tasks. The site plans and test results will be included in the presentation during the February 4 work session.

### ***2020 Work Plan Tasks***

- ***Task 1 – Groundwater Monitoring***

This task was completed in accordance with the approved 2020 CAP; however, the semi-annual groundwater sampling plan was altered due to temporary shutdown of field work during the first two quarters of 2020 as a result of Covid-19. Consequently, the semi-annual groundwater monitoring events were completed during the last two quarters of 2020.

- Task 2 – Chemical Oxidation (Chemox) Treatment

This task was completed in accordance with the approved 2020 CAP. The chemox treatment was completed during the 3rd and 4th quarters of 2020 due to field work shutdown during the first two quarters of 2020 as a result of Covid-19 precautions.

***Proposed Work Plan Tasks for 2021***

- Task 1 – Groundwater Monitoring

This task consists of semi-annual monitoring of six groundwater monitoring wells and annual monitoring of two additional monitoring wells. Sampling locations and analyses for the groundwater monitoring wells and remediation wells are listed on the 2021 Work Plan Schedule below.

Work Plan Task		1 <sup>st</sup> Quarter	2 <sup>nd</sup> Quarter	3 <sup>rd</sup> Quarter	4 <sup>th</sup> Quarter
Task 1	Monitoring Wells: MW-2, MW-3, MW-6, MW-10, MW-17-2 and MW-17-5.		V, G, D, I & S		V, G, D, I, S & P
	Monitoring Wells MW-1 and MW-4				V, G, D, I, S & P
Task 2	Chemical Oxidation Treatment		✓	✓	✓

Key: AK – Alaska Test Method  
 D – Diesel range organics by AK102.  
 E – Drinking water parameters by EPA Method 524.1.  
 G – Gasoline range organics by AK101.  
 I – Intrinsic indicators consisting of dissolved oxygen, specific conductance, oxygen-reduction potential, pH, and temperature.  
 O&M – Operation and Maintenance  
 V – Volatile organic compounds by EPA Test Method 8260C.  
 S – Sodium analyzed by Metals (ICP) Method 6010C.  
 P - P – Polynuclear aromatic hydrocarbons (PAHs), i.e., semi-volatile organic compounds, by EPA Test Method 8270D Selective Ion Monitoring (SIM)

- Task 2 – Chemical Oxidation Treatment

Stantec proposes to provide chemical oxidation treatment of the petroleum contaminated soil and groundwater located in the source area of the former underground storage tank (UST) system. The chemox injection will occur three times in the 2nd, 3rd and 4th quarters of the year into the following injection wells: RM17-1, RM17-3, RM17-4, and RM17-6. The first annual injection will occur in the spring of the year after the winter frost dissipates, and the second and third injections will take place several months later just prior to winter freeze-up. Approximately 100 gallons of a prepared solution of clean water and 110 pounds of Klozur One<sup>®</sup> will be manually injected via gravity and/or a low pressure booster pump into each of the four remediation wells. Following the injection of the chemox solution, a minimum of 100 gallons of clear water will be injected into each injection well to provide a means of “hydraulically pushing” the chemox solution into the subsurface



formation. In addition, the groundwater monitoring wells will be sampled for sodium to check on the distribution/migration of the oxidant.

The Corrective Action Plan for the year 2021 will be implemented by Stantec on behalf of Speedway. Groundwater monitoring will be conducted to track migration and trends of contaminants that are present at the site. All sampling activities will be completed in accordance with ADEC's *Underground Storage Tanks Procedures Manual– Standard Sampling Procedures* (March 22, 2017). The methods that will be used for conducting a monitoring event, unless otherwise noted in the monitoring report, will include:

- The static water levels in the monitoring wells will be measured with respect to the top of each well casing. The elevation of the static water level will be based on an arbitrary datum established on-site during a vertical control survey that will be completed by Stantec on an annual basis. The survey will be performed during the summer after the seasonal frost layer thaws.
- The monitoring wells will be purged of a minimum of three well bore volumes prior to collecting the water samples. A new, disposable, Teflon<sup>®</sup> bailer will be used to sample each well. The first bail of water removed from each well will be examined for petroleum odor, sheen, and any other unique physical features.
- Water samples will be collected in laboratory-supplied sample containers. The samples will be delivered to an ADEC-approved laboratory in accordance with standard chain-of-custody procedures.
- Additional water samples will be collected from the monitoring wells after the well has been purged, as described above, and tested in the field for chemical and physical intrinsic parameters listed in the 2021 Work Plan Schedule shown above.

If you have any questions or need additional information concerning this 2021 Corrective Action Plan, please contact us at (907) 248-8883.

Regards,

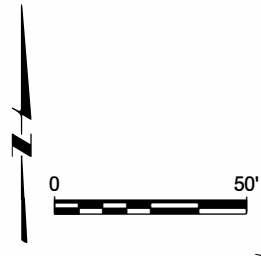
**STANTEC CONSULTING SERVICES INC.**

Michael A. Zidek, PMP  
Project Manager

Bob Gilfilian, P.E.  
Project Technical Lead

Attachments: Location and Vicinity Map  
Site Plan with Groundwater Analytical Results  
Analytical Test Results (historical tables)





COLONIAL PLAZA MALL  
DRINKING WELL,  
MORNING STAR SUB. TRACT D  
APPROXIMATELY 180'  
NORTH OF THIS POINT

MW-3	MW-3 (Duplicate)		
Benzene.....	<b>0.0446</b>	Benzene.....	<b>0.0403</b>
Toluene.....	0.187	Toluene.....	0.265
Ethylbenzene.....	<b>0.473</b>	Ethylbenzene.....	<b>0.801</b>
Xylenes.....	<b>4.59</b>	Xylenes.....	<b>6.61</b>
GRO.....	<b>10.7</b>	GRO.....	<b>11.1</b>
DRO.....	<b>3.64</b>	DRO.....	<b>4.57</b>
Naphthalene.....	<b>0.0434</b>	Naphthalene.....	<b>0.0334</b>
Sodium.....	23.5	Sodium.....	24.3
GW Elev.....	389.35'	GW Elev.....	389.35'

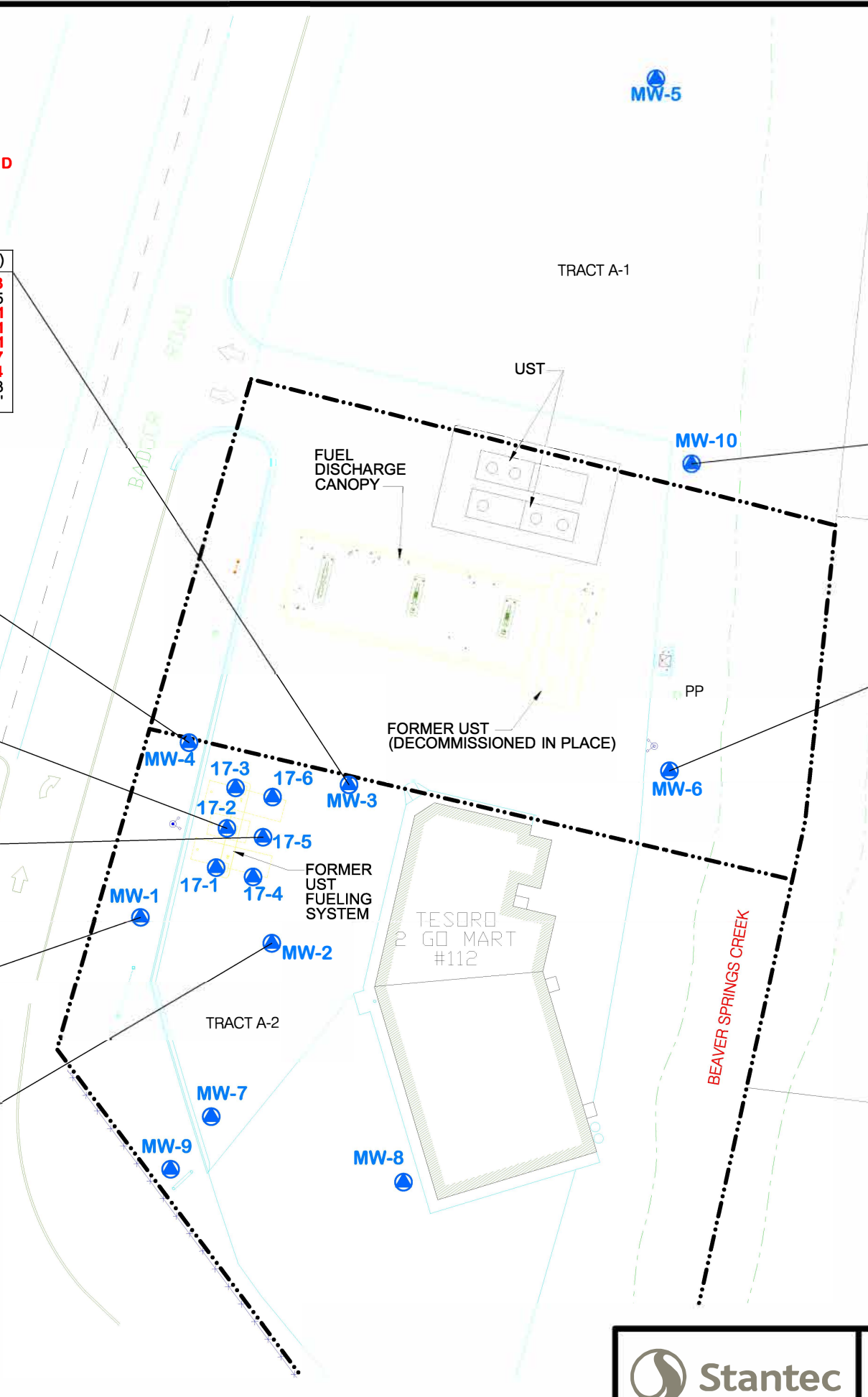
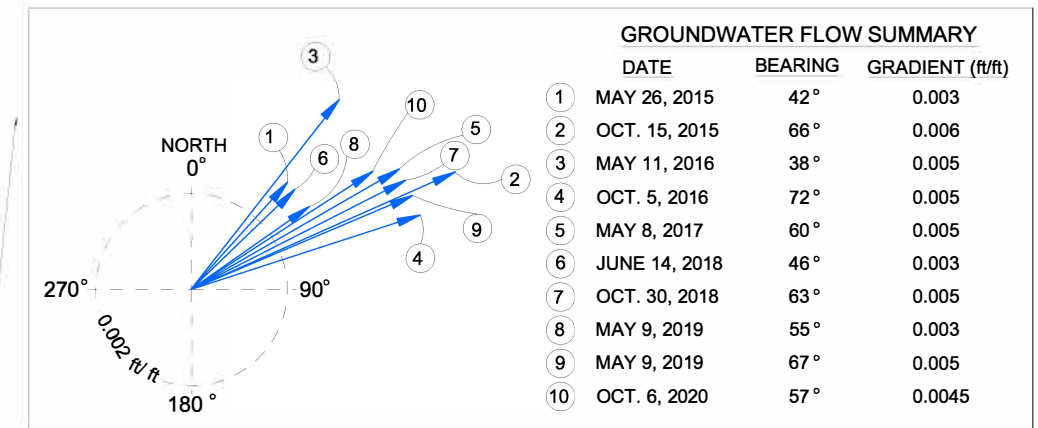
MW-4	
Benzene.....	(0.001)
Toluene.....	(0.001)
Ethylbenzene.....	(0.001)
Xylenes.....	(0.003)
GRO.....	0.0144
DRO.....	0.574
Naphthalene.....	(0.00025)
Sodium.....	13.3
GW Elev.....	389.38'

MW 17-2	
Benzene.....	0.00132
Toluene.....	(0.001)
Ethylbenzene.....	<b>0.113</b>
Xylenes.....	<b>0.591</b>
GRO.....	2.08
DRO.....	<b>2.43</b>
Naphthalene.....	<b>0.00614</b>
Sodium.....	75.8
GW Elev.....	389.41'

MW 17-5	
Benzene.....	<b>0.0314</b>
Toluene.....	0.144
Ethylbenzene.....	<b>0.158</b>
Xylenes.....	<b>0.401</b>
GRO.....	1.68
DRO.....	0.569
Naphthalene.....	<b>0.00475</b>
Sodium.....	14.1
GW Elev.....	389.43'

MW-1	
Benzene.....	0.000373
Toluene.....	0.0428
Ethylbenzene.....	0.00419
Xylenes.....	0.0374
GRO.....	0.153
DRO.....	1.27
Naphthalene.....	0.0000972
Sodium.....	33
GW Elev.....	389.46'

MW-2	
Benzene.....	0.00121
Toluene.....	0.000531
Ethylbenzene.....	0.0104
Xylenes.....	0.0245
GRO.....	0.277
DRO.....	0.38
Naphthalene.....	0.000284
Sodium.....	12.3
GW Elev.....	389.40"



MW-10	
Benzene.....	(0.001)
Toluene.....	(0.001)
Ethylbenzene.....	(0.001)
Xylenes.....	(0.003)
GRO.....	(0.0100)
DRO.....	(0.800)
Naphthalene.....	(0.00025)
Sodium.....	5.51
GW Elev.....	388.32'

MW-6	
Benzene.....	(0.001)
Toluene.....	(0.001)
Ethylbenzene.....	(0.001)
Xylenes.....	(0.003)
GRO.....	(0.0100)
DRO.....	(0.800)
Naphthalene.....	(0.00025)
Sodium.....	15
GW Elev.....	388.69'

**LEGEND:**

---	PROPERTY LINE
▲	MONITORING WELL
DRO	DIESEL RANGE ORGANICS
GRO	GASOLINE RANGE ORGANICS
GW Elev.	GROUNDWATER ELEVATION IN FEET
NC	NOT CALCULATED
NT	NOT TESTED
PP	POWER POLE
UST	UNDERGROUND STORAGE TANK

- NOTES:**
- RESULTS SHOWN ARE FOR WELLS SAMPLED ON October 6, 2020
  - RESULTS ARE IN MILLIGRAMS PER LITER
  - BOLD/ RED TEXT INDICATES CONTAMINANT CONCENTRATIONS ABOVE CLEANUP LEVELS FOR THIS SITE
  - ITALICS THE IDENTIFICATION OF THE ANALYTE IS ACCEPTABLE; THE REPORTED VALUE IS AN ESTIMATE.
  - PARENTHESES ( ) UNDETECTED ABOVE PRACTICAL QUANTITATIVE LIMITS

v:\185704928\185704928\03\_data\cod\loc\2020\fig2\_layout-results  
2/26/20 12:31 4:30:05 AM



SPEEDWAY STORE 5310  
FORMALLY TESORO 2 GO MART #112  
2021 CORRECTIVE ACTION PLAN

SITE PLAN WITH OCTOBER 2020  
GROUNDWATER DETECTIONS  
AND EXCEEDANCES

Tables of Historical Groundwater Monitoring Data

Monitoring Well MW-1

Date	Benzene (mg/L)	Toluene (mg/L)	Ethylbenzene (mg/L)	Xylenes (mg/L)	GRO (mg/L)	DRO (mg/L)	Sodium (mg/L)	GW Elev (feet)
30-May-97	0.310	9.00	2.30	10.0	42.0	8.5	NT	88.88
11-Sep-97	0.571	12.60	2.00	9.37	55.0	6.05	NT	89.26
12-Mar-98	0.220	4.90	1.30	6.0	37	5.1	NT	88.92
21-Jul-98	0.143	4.29	0.84	3.92	22	7.59	NT	89.51
12-Oct-98	0.277	4.36	0.458	1.929	16	5.98	NT	87.78
21-Jan-99	0.036	1.08	0.24	1.208	6.8	2.46	NT	88.80
31-Mar-99	0.015	0.297	0.151	0.703	3.3	0.686	NT	88.28
28-Jul-99	0.087	10.80	1.96	9.38	46	3.89	NT	89.14
15-Oct-99	0.174	2.97	0.503	2.334	15	3.74	NT	88.91
10-Mar-00	0.0216	0.718	0.161	0.783	4.7	0.81	NT	88.52
21-Jun-00	0.0220	0.931	0.284	1.321	7.6	1.03	NT	89.32
21-Sep-00	0.0329	0.471	0.160	0.736	5.0	1.61	NT	89.26
25-Jan-01	0.0170	0.322	0.110	0.523	3.69	0.644	NT	88.90
19-Apr-01	0.0123	0.097	0.046	0.221	1.48	0.920	NT	88.87
24-Jul-01	0.0119	0.209	0.104	0.409	2.07	0.628	NT	89.25
28-Jan-02	0.1200	2.070	0.604	2.841	10.8	0.778	NT	89.16
30-Apr-02	5.020	9.480	0.284	3.470	32.2	2.1	NT	89.65
30-Sep-02	0.659	0.209	0.0551	0.736	3.87	1.11	NT	89.72
12-May-03	0.538	3.14	0.814	20.42	44.5	4.84	NT	89.70
09-Oct-03	0.00437	0.00571	0.00189	0.0998	0.697	U (0.32)	NT	389.08
21-Apr-04	U (0.0005)	0.000709	U (0.0005)	0.00984	U (0.05)	U (0.5)	NT	388.75
21-Oct-04	0.00544	0.00284	0.00585	1.46	3.52	2.41	NT	388.32
19-May-05	0.000943	0.00248	0.00272	0.0211	0.0709	0.48	NT	389.26
15-May-07	U (0.0005)	U (0.0005)	U (0.0005)	U (0.0015)	U (0.05)	U (0.413)	NT	388.45
29-Apr-08	U (0.0005)	0.00088	U (0.0005)	U (0.0015)	U (0.05)	0.862	NT	388.52
12-May-09	U (0.0005)	0.00427	0.00077	0.00586	U (0.05)	1.77	NT	389.20
15-Jun-10	0.00134	0.0297	0.0357	0.249	0.849	U (0.420)	NT	389.00
24-May-11	U (0.0005)	0.00056	0.00479	0.0377	0.0857	0.652	NT	389.11
22-May-12	0.000701	0.00284	0.0765	0.407	1.41	U (0.410)	NT	388.89
21-May-13	0.000845	U (0.0005)	0.125	0.455	1.21	0.587	NT	389.20
06-May-14	U (0.0005)	U (0.0005)	0.0021	0.011	U (0.05)	0.64	NT	389.34
26-May-15	U (0.001)	0.0044	0.0045	0.031	0.21	2.3	NT	389.72
11-May-16	0.00055	0.0026	0.0053	0.029	U (0.1)	U (0.40)	NT	389.18
08-May-17	U (0.002)	U (0.002)	0.034	0.285	U (10)	1.5	NT	389.46
14-Jun-18	U (0.003)	0.0021	0.0086	0.071	0.028	0.43	NT	389.56
09-May-19	U (0.003)	U (0.002)	U (0.003)	0.0034	U (0.25)	0.42	NT	388.94
06-Oct-20	0.000373 J	0.0428	0.00419	0.0374	0.153	1.27	33	389.46
<b>GCLs</b>	<b>0.0046</b>	<b>1.1</b>	<b>0.015</b>	<b>0.19</b>	<b>2.2</b>	<b>1.5</b>	NA	NA

Dates Well was not tested have been removed from this table.

Tables of Historical Groundwater Monitoring Data

Monitoring Well MW-2

Date	Benzene (mg/L)	Toluene (mg/L)	Ethylbenzene (mg/L)	Xylenes (mg/L)	GRO (mg/L)	DRO (mg/L)	Sodium (mg/L)	GW Elev (feet)
30-May-97	92	64	7.1	33	170	8.2	NT	88.86
12-Mar-98	2.8	44	13	62	420	21	NT	88.90
19-Apr-01	2.93	52.9	9.9	44.5	216	27.4	NT	88.85
24-Jul-01	1.95	30.5	5.3	33.9	136	18.5	NT	89.24
28-Jan-02	1.23	33.4	7.38	39.8	156	10.5	NT	89.14
30-Apr-02	0.116	10.2	2.60	17.43	51.4	6.9	NT	89.66
30-Sep-02	0.656	17.9	2.92	26.61	118	6.93	NT	89.29
12-May-03	0.569	19.7	4.15	25.43	90.8	5.68	NT	89.74
09-Oct-03	0.25	6.21	2.88	14.2	64.9	U (0.32)	NT	389.00
21-Apr-04	U (0.005)	0.116	0.114	1.21	5.42	7	NT	388.73
21-Oct-04	0.00518	0.0824	0.109	0.699	3.2	1.74	NT	388.03
19-May-05	0.00681	0.513	0.376	1.61	7.88	5.49	NT	389.21
26-Sep-05	0.0125	0.58	0.422	1.78	9.6	3.15	NT	388.93
15-May-06	0.00058	0.0273	0.0533	0.223	1.5	1.87	NT	388.80
07-Nov-06	0.0102	1.11	0.906	3.24	17	1.35	NT	388.64
15-May-07	0.00279	0.0199	0.0356	0.173	1.99	1.9	NT	388.15
16-Oct-07	0.0032	0.173	0.412	1.03	7.61	1.55	NT	388.15
29-Apr-08	U (0.0005)	U (0.0005)	0.0043	0.0131	0.453	2.09	NT	388.82
01-Oct-08	0.00114	0.0194	0.228	0.739	3.12	1.38	NT	389.24
12-May-09	0.00385	0.0114	0.308	0.537	4.0	8.79	NT	389.14
26-Oct-09	0.00138	0.0108	0.717	1.48	4.25	0.738	NT	388.76
15-Jun-10	0.00143	0.00135	0.0205	0.0729	1.32	0.510	NT	388.99
14-Oct-10	0.00192	0.0136	0.127	0.700	4.45	1.49	NT	388.66
24-May-11	0.00232	0.0313	0.798	1.320	6.24	3.04	NT	388.96
26-Oct-11	U (0.010)	U (0.010)	0.345	1.110	6.53	0.744	NT	388.59
22-May-12	0.00566	0.00275	0.179	0.503	5.17	NR	NT	388.88
11-Oct-12	0.000750	0.0197	0.00707	0.0614	0.687	0.655	NT	389.13
21-May-13	0.001730	0.000638	0.0190	0.0325	0.388	U (0.397)	NT	389.20
25-Sep-13	0.001300	0.00104	0.269	0.481	2.61	0.573	NT	389.27
06-May-14	0.003800	U (0.0005)	0.150	0.210	1.80	0.670	NT	389.28
17-Sep-14	0.000720	0.00068	0.096	0.150	1.30	U (0.38)	NT	388.88
26-May-15	0.0018	U (0.003)	0.092	0.21	1.6	2.5	NT	389.53
06-Oct-15	0.036	0.0039	0.290	0.640	4.7	0.76	NT	389.86
11-May-16	0.0023	U (0.001)	0.10	0.14	1.2	0.73	NT	389.13
05-Oct-16	U (0.020)	U (0.020)	0.15	0.22	1.7	1.4	NT	389.51
08-May-17	U (0.002)	U (0.002)	0.23	0.639	2.8	0.68	NT	389.42
05-Sep-17	0.0014	U (0.001)	0.041	0.081	1.000	0.9	NT	389.34
14-Jun-18	U (0.003)	U (0.002)	0.077	0.1128	1.1	0.3	NT	389.52
30-Oct-18	U (0.003)	U (0.002)	0.042	0.062	0.69	2.4	NT	389.22
09-May-19	U (0.003)	U (0.002)	0.023	0.051	0.41	0.26	NT	388.88
22-Oct-19	U (0.003)	U (0.002)	0.017	0.029	0.36	0.72	NT	389.44
18-Aug-20	0.00074	0.000886 J	0.00728	0.0156	0.203	0.632	NT	389.8
06-Oct-20	0.00121	0.000531 J	0.0104	0.0245	0.277	0.38 J	12.3	389.4
<b>GCLs</b>	<b>0.0046</b>	<b>1.1</b>	<b>0.015</b>	<b>0.19</b>	<b>2.2</b>	<b>1.5</b>	NA	NA

Dates Well was not tested have been removed from this table.

Tables of Historical Groundwater Monitoring Data

Monitoring Well MW-3

Date	Benzene (mg/L)	Toluene (mg/L)	Ethylbenzene (mg/L)	Xylenes (mg/L)	GRO (mg/L)	DRO (mg/L)	Sodium (mg/L)	GW Elev (feet)
30-May-97	23	69	12	54	380	54	NT	88.79
30-Sep-02	36.6	75.3	3.87	40.3	337	7.38	NT	89.15
12-May-03	5.41	6.45	1.44	7.86	36.6	2.37	NT	89.68
09-Oct-03	13.6	52.3	5.31	49.9	392	U (0.32)	NT	388.92
16-Mar-04	NT	NT	NT	NT	NT	NT	NT	NM
21-Apr-04	0.617	1.47	0.722	5.69	20.2	1.9	NT	389.34
17-Sep-04	NT	NT	NT	NT	NT	NT	NT	NM
21-Oct-04	9.38	29.5	3.68	24.3	157	4.96	NT	388.26
19-May-05	0.846	5.38	1.04	8.9	37.3	2.03	NT	389.41
26-Sep-05	0.0496	1.27	0.261	4.24	14.6	3.15	NT	389.12
15-May-06	0.833	5.05	1.63	12.5	44.3	4.44	NT	388.90
07-Nov-06	1.74	26.4	3.74	31.4	174	4.68	NT	388.87
15-May-07	0.0124	0.136	0.0942	0.948	3.93	2.49	NT	388.37
16-Oct-07	0.126	2.3	0.272	17.5	55.3	7.82	NT	387.31
29-Apr-08	0.0063	0.143	0.0197	0.321	1.44	4.71	NT	388.74
01-Oct-08	0.00305	0.0238	0.0572	0.913	2.4	3.2	NT	389.36
12-May-09	0.056	0.833	0.624	5.7	17.2	5.95	NT	389.26
26-Oct-09	0.0903	2.25	0.935	13.6	51.5	3.41	NT	388.70
15-Jun-10	0.0428	0.377	0.449	4.2	12.8	2.86	NT	388.90
14-Oct-10	0.113	9.24	2.48	25.6	137	7.56	NT	388.28
24-May-11	0.205	2.53	1.31	20.9	62.4	7.72	NT	388.85
26-Oct-11	0.104	2.09	1.39	20.7	47.0	12.0	NT	388.56
22-May-12	0.131	1.99	0.751	12.9	41.3	5.22	NT	388.82
11-Oct-12	0.0102	0.373	0.271	3.83	23.2	1.35	NT	389.05
21-May-13	1.50	11.2	2.39	15.9	70.0	20.3	NT	389.13
25-Sep-13	0.102	4.01	1.93	23.9	47.9	7.15	NT	389.18
06-May-14	0.037	0.470	0.420	3.8	12.0	4.70	NT	389.10
17-Sep-14	0.047	1.5	1.200	14.0	26.0	2.70	NT	388.75
26-May-15	0.057	2.0	1.6	13.0	79.0	4.6	NT	389.50
06-Oct-15	0.10	2.1	1.5	16.0	57.0	2.2	NT	389.77
11-May-16	0.00093	0.024	0.034	0.34	1.1	1.6	NT	389.07
05-Oct-16	0.054	0.61	0.92	7.9	21	2.5	NT	389.44
08-May-17	0.021	0.32	0.63	6.6	19	4.4	NT	389.37
05-Sep-17	0.040	0.750	1.000	12.000	30.000	2.000	NT	389.25
14-Jun-18	0.027	0.67	1.1	11.6	U (25)	2.8	NT	389.44
30-Oct-18	0.036	0.37	1.2	12	39	5.7	NT	389.14
10-May-19	0.029	0.200	0.380	4.02	10	0.66	NT	388.84
22-Oct-19	0.028	0.150	0.750	5.5	17	3.7 H	NT	389.42
18-Aug-20	0.0244	0.194	0.637	6.86	12.6	2.84	28.8	389.75
06-Oct-20	0.0446	0.187	0.473	4.59	10.7	3.64	23.5	389.35
<b>GCLs</b>	<b>0.0046</b>	<b>1.1</b>	<b>0.015</b>	<b>0.19</b>	<b>2.2</b>	<b>1.5</b>	<b>NA</b>	<b>NA</b>

Dates Well was not tested have been removed from this table.



Tables of Historical Groundwater Monitoring Data

Monitoring Well MW-4

Date	Benzene (mg/L)	Toluene (mg/L)	Ethylbenzene (mg/L)	Xylenes (mg/L)	GRO (mg/L)	DRO (mg/L)	Sodium (mg/L)	GW Elev (feet)
30-May-97	0.85	0.71	0.160	0.64	3.8	0.55	NT	88.79
11-Sep-97	8.41	14.5	1.150	5.57	64	1.71	NT	89.2
12-Mar-98	2.30	3.3	0.420	1.80	15	0.68	NT	88.84
21-Jul-98	3.71	3.69	0.485	2.09	21	0.7	NT	89.41
12-Oct-98	1.95	1.99	0.360	1.58	12	1.29	NT	88.73
21-Jan-99	0.94	0.483	0.127	0.579	4.3	0.7	NT	88.75
28-Jul-99	3.48	5.6	0.390	1.86	21	2.65	NT	89.03
15-Oct-99	3.3	5.4	0.422	1.962	26	3.84	NT	88.81
10-Mar-00	1.88	2.52	0.466	2.03	14	1.91	NT	88.45
21-Jun-00	1.44	1.78	0.201	0.923	10	0.660	NT	89.24
21-Sep-00	U (0.0005)	U (0.002)	U (0.002)	U (0.002)	U (0.09)	0.838	NT	89.18
25-Jan-01	0.5330	0.602	0.397	1.464	7.27	1.71	NT	88.82
19-Apr-01	U (0.0005)	0.015	0.011	0.066	0.225	U(0.8)	NT	88.78
24-Jul-01	0.001	U (0.002)	U (0.002)	U (0.002)	U (0.09)	0.869	NT	89.17
28-Jan-02	0.2710	0.802	0.631	2.646	9.580	0.708	NT	89.06
30-Apr-02	0.0644	U (0.002)	0.509	0.128	0.623	U (0.495)	NT	89.66
30-Sep-02	0.0157	U (0.002)	0.00523	0.0114	0.0943	U (0.5)	NT	89.22
12-May-03	0.0138	0.00268	0.00595	0.05252	0.167	U (0.3)	NT	89.69
09-Oct-03	0.0311	U (0.0005)	0.00555	0.0657	0.266	2.95	NT	388.92
21-Apr-04	0.00295	U (0.0005)	0.00506	0.113	0.311	U (0.5)	NT	388.65
21-Oct-04	0.0121	U (0.0005)	U (0.0005)	0.00791	0.0646	0.455	NT	387.82
19-May-05	0.00295	U (0.0005)	U (0.0005)	0.0167	0.067	U (0.391)	NT	389.16
15-May-06	0.000635	U (0.0005)	U (0.0005)	0.00919	0.051	U (0.403)	NT	388.63
15-May-07	U (0.0005)	U (0.0005)	U (0.0005)	U (0.0015)	U (0.05)	0.782	NT	387.97
29-Apr-08	0.00175	0.00338	0.00097	1.2	1.75	3.78	NT	388.88
12-May-09	U (0.0005)	0.00121	U (0.0005)	0.00189	U (0.05)	U (0.427)	NT	388.98
15-Jun-10	U (0.0005)	U (0.0005)	U (0.0005)	U (0.00976)	U (0.05)	U (0.410)	NT	388.93
24-May-11	U (0.0005)	U (0.0005)	U (0.0005)	U (0.0015)	U (0.05)	U (0.403)	NT	388.87
22-May-12	U (0.0005)	U (0.0005)	U (0.0005)	U (0.0015)	U (0.05)	U (0.417)	NT	388.82
21-May-13	U (0.0005)	U (0.0005)	U (0.0005)	U (0.0015)	U (0.05)	U (0.403)	NT	389.13
06-May-13	U (0.0005)	U (0.0005)	U (0.0005)	U (0.0015)	U (0.05)	U (0.41)	NT	389.23
26-May-15	U (0.001)	U (0.001)	U (0.001)	U (0.001)	U (0.05)	0.23	NT	389.50
11-May-16	U (0.0020)	U (0.001)	U (0.001)	U (0.003)	U (0.1)	U (0.40)	NT	389.09
08-May-17	U (0.002)	U (0.002)	U (0.003)	U (0.002)	U (1)	0.14	NT	389.41
14-Jun-18	U (0.003)	U (0.002)	U (0.003)	U (0.002)	U (0.000054)	U (0.25)	NT	389.49
09-May-19	U (0.003)	U (0.002)	U (0.003)	U (0.003)	U (0.25)	0.51	NT	393.87
06-Oct-20	U (0.001)	U (0.001)	U (0.001)	U (0.003)	0.0144	0.574	13.3	389.38
<b>GCLs</b>	<b>0.0046</b>	<b>1.1</b>	<b>0.015</b>	<b>0.19</b>	<b>2.2</b>	<b>1.5</b>	NA	NA

Dates Well was not tested have been removed from this table.

**Tables of Historical Groundwater Monitoring Data**

**Monitoring Well MW-5**

<b>Date</b>	<b>Benzene (mg/L)</b>	<b>Toluene (mg/L)</b>	<b>Ethylbenzene (mg/L)</b>	<b>Xylenes (mg/L)</b>	<b>GRO (mg/L)</b>	<b>DRO (mg/L)</b>	<b>Sodium (mg/L)</b>	<b>GW Elev (feet)</b>
12-Oct-98	0.019	U	U	0.002	0.045	0.110	NT	85.78
21-Jan-99	0.051	U	U	U	0.110	0.127	NT	86.04
31-Mar-99	0.023	U (0.001)	U (0.001)	0.0013	U (0.09)	U (0.297)	NT	86.56
28-Jul-99	0.008	U (0.002)	U (0.002)	U (0.002)	U (0.09)	U (0.300)	NT	88.23
15-Oct-99	0.040	U (0.002)	U (0.002)	U (0.002)	0.11	U (0.297)	NT	88.17
10-Mar-00	0.104	0.003	U (0.002)	0.005	0.22	U (0.297)	NT	88.17
21-Jun-00	0.025	U (0.002)	U (0.002)	U (0.002)	U (0.09)	U (0.297)	NT	88.67
21-Sep-00	0.025	U (0.002)	U (0.002)	U (0.002)	U (0.09)	U (0.303)	NT	88.39
25-Jan-01	0.066	0.003	0.002	0.007	0.19	U (0.300)	NT	88.15
19-Apr-01	U(0.0005)	0.002	0.003	0.003	U (0.09)	U(0.816)	NT	88.06
24-Jul-01	U(0.0005)	U (0.002)	U (0.002)	U (0.002)	U (0.09)	U (0.495)	NT	88.37
28-Jan-02	0.0029	U (0.002)	U (0.002)	0.002	U (0.09)	U (0.521)	NT	88.28
30-Apr-02	U(0.0005)	U (0.002)	U (0.002)	U (0.002)	U (0.09)	U (0.500)	NT	88.85
30-Sep-02	U (0.0005)	U (0.002)	U (0.002)	U (0.002)	U (0.09)	U (0.5)	NT	88.00
12-May-03	U (0.0005)	U (0.002)	U (0.002)	U (0.002)	U (0.09)	U (0.3)	NT	87.94
09-Oct-03	U (0.0005)	U (0.0005)	U (0.0005)	U (0.001)	U (0.08)	U (0.32)	NT	388.19
21-Apr-04	U (0.0005)	U (0.0005)	U (0.0005)	U (0.0015)	U (0.05)	U (0.5)	NT	387.86
21-Oct-04	U (0.0002)	U (0.0005)	U (0.0005)	U (0.001)	U (0.05)	U (0.4)	NT	387.72
19-May-05	U (0.0005)	U (0.0005)	U (0.0005)	U (0.0015)	U (0.05)	U (0.391)	NT	388.12
15-May-06	U (0.0005)	U (0.0005)	U (0.0005)	U (0.0015)	U (0.05)	U (0.391)	NT	387.69
15-May-07	U (0.0005)	U (0.0005)	U (0.0005)	0.00154	U (0.05)	0.522	NT	387.46
29-Apr-08	U (0.0005)	U (0.0005)	U (0.0005)	U (0.0015)	U (0.05)	U (0.435)	NT	387.92
12-May-09	U (0.0005)	U (0.0005)	U (0.0005)	U (0.0015)	U (0.05)	U (0.450)	NT	388.21
GCLs	0.0046	1.1	0.015	0.19	2.2	1.5	NA	NA

Well not tested between May 12, 2009 and October 6, 2020. Dates Well was not tested have been removed from table.

Tables of Historical Groundwater Monitoring Data

Monitoring Well MW-6

Date	Benzene (mg/L)	Toluene (mg/L)	Ethylbenzene (mg/L)	Xylenes (mg/L)	GRO (mg/L)	DRO (mg/L)	Sodium (mg/L)	GW Elev (feet)
21-Jun-00	0.0012	U (0.002)	U (0.002)	U (0.002)	U (0.09)	U (0.3)	NT	88.51
21-Sep-00	U (0.0005)	U (0.002)	U (0.002)	U (0.002)	U (0.09)	U (0.297)	NT	88.47
25-Jan-01	0.00051	0.0026	U (0.002)	0.003	U (0.09)	U (0.3)	NT	88.22
19-Apr-01	U (0.0005)	U (0.002)	U (0.002)	0.003	U (0.09)	U(0.808)	NT	88.17
24-Jul-01	U (0.0005)	U (0.002)	U (0.002)	U (0.002)	U (0.09)	U (0.495)	NT	88.48
28-Jan-02	U (0.0005)	U (0.002)	U (0.002)	U (0.002)	U (0.09)	U (0.500)	NT	88.43
30-Apr-02	0.000565	0.00411	0.00203	0.01081	U (0.09)	U (0.500)	NT	88.77
30-Sep-02	U (0.0005)	U (0.002)	U (0.002)	U (0.002)	U (0.09)	U (0.495)	NT	88.40
12-May-03	U (0.0005)	U (0.002)	U (0.002)	U (0.002)	U (0.09)	U (0.3)	NT	88.13
09-Oct-03	U (0.0005)	U (0.0005)	U (0.0005)	U (0.001)	U (0.08)	U (0.32)	NT	388.30
21-Apr-04	U (0.0005)	U (0.0005)	U (0.0005)	U (0.0015)	U (0.05)	U (0.5)	NT	387.99
21-Oct-04	U (0.0002)	U (0.0005)	U (0.0005)	U (0.001)	U (0.05)	U (0.4)	NT	387.21
19-May-05	U (0.0005)	U (0.0005)	U (0.0005)	U (0.0015)	U (0.05)	U (0.391)	NT	388.24
15-May-06	U (0.0005)	U (0.0005)	U (0.0005)	U (0.0015)	U (0.05)	U (0.397)	NT	387.96
15-May-07	U (0.0005)	U (0.0005)	U (0.0005)	U (0.0015)	U (0.05)	U (0.417)	NT	387.44
29-Apr-08	U (0.0005)	U (0.0005)	U (0.0005)	U (0.0015)	U (0.05)	U (0.481)	NT	388.23
12-May-09	U (0.0005)	U (0.0005)	U (0.0005)	U (0.0015)	U (0.05)	U (0.400)	NT	388.52
15-Jun-10	U (0.0005)	U (0.0005)	U (0.0005)	U (0.00976)	U (0.05)	U (0.431)	NT	NM
24-May-11	U (0.0005)	U (0.0005)	U (0.0005)	U (0.0015)	U (0.05)	U (0.385)	NT	388.26
26-Oct-11	U (0.0005)	U (0.0005)	U (0.0005)	U (0.0015)	U (0.05)	U (0.403)	NT	388.12
22-May-12	U (0.0005)	U (0.0005)	U (0.0005)	U (0.0015)	U (0.05)	U (0.417)	NT	388.26
11-Oct-12	U (0.0005)	U (0.001)	U (0.001)	U (0.003)	U (0.05)	U (0.403)	NT	388.44
21-May-13	U (0.0005)	U (0.0005)	U (0.0005)	U (0.0015)	U (0.05)	U (0.417)	NT	388.48
25-Sep-13	U (0.0005)	U (0.0005)	U (0.0005)	U (0.0015)	U (0.05)	U (0.385)	NT	388.63
06-May-14	U (0.0005)	U (0.0005)	U (0.0005)	U (0.0015)	U (0.05)	U (0.42)	NT	388.59
17-Sep-14	U (0.0005)	U (0.0005)	U (0.0005)	U (0.0005)	U (0.05)	U (0.39)	NT	389.46
26-May-15	U (0.001)	U (0.001)	U (0.001)	U (0.001)	U (0.05)	U (0.21)	NT	389.20
06-Oct-15	U (0.001)	U (0.001)	U (0.001)	U (0.003)	U (0.01)	0.84	NT	388.99
11-May-16	U (0.0020)	U (0.0020)	U (0.0020)	U (0.0020)	U (0.0020)	U (0.0020)	NT	388.41
05-Oct-16	U (0.0020)	U (0.0020)	U (0.0030)	U (0.0020)	U (0.05)	U (0.12)	NT	388.70
08-May-17	U (0.002)	U (0.002)	U (0.003)	U (0.002)	U (1)	U (0.11)	NT	388.70
05-Sep-17	U (0.004)	U (0.001)	U (0.001)	U (0.003)	U (0.150)	U (0.290)	NT	388.64
14-Jun-18	U (0.003)	U (0.002)	U (0.003)	U (0.002)	U (0.25)	U (0.12)	NT	388.77
30-Oct-18	U (0.003)	U (0.002)	U (0.003)	0.0084	U (0.25)	U (0.12)	NT	388.53
09-May-19	U (0.003)	U (0.002)	U (0.003)	U (0.003)	U (0.25)	U (0.12)	NT	388.30
22-Oct-19	U (0.003)	U (0.002)	U (0.003)	U (0.003)	U (0.25)	U (0.12)	NT	388.72
18-Aug-20	U (0.200)	U (0.500)	U (0.500)	U (1.500)	U (0.0500)	J (0.210)	NT	389.05
06-Oct-20	U (0.001)	U (0.001)	U (0.001)	U (0.003)	U (0.0100)	U (0.800)	15	388.69
<b>GCLs</b>	<b>0.0046</b>	<b>1.1</b>	<b>0.015</b>	<b>0.19</b>	<b>2.2</b>	<b>1.5</b>	NA	NA

Dates Well was not tested have been removed from this table.

Tables of Historical Groundwater Monitoring Data

Monitoring Well MW-7

Date	Benzene (mg/L)	Toluene (mg/L)	Ethylbenzene (mg/L)	Xylenes (mg/L)	GRO (mg/L)	DRO (mg/L)	Sodium (mg/L)	GW Elev (feet)
09-Oct-03	0.0237	0.00185	0.014	0.0877	2.36	U (0.32)	NT	389.10
16-Mar-04	NT	NT	NT	NT	NT	NT	NT	NM
21-Apr-04	U (0.0005)	U (0.0005)	U (0.0005)	U (0.0015)	U (0.05)	U (0.5)	NT	388.83
17-Sep-04	NT	NT	NT	NT	NT	NT	NT	NM
21-Oct-04	0.00325	U (0.0005)	0.000934	0.00498	0.298	0.508	NT	388.25
19-May-05	0.000909	U (0.0005)	0.000527	U (0.0015)	0.275	U (0.391)	NT	389.29
26-Sep-05	NT	NT	NT	NT	NT	NT	NT	NM
15-May-06	U (0.0005)	U (0.0005)	U (0.0005)	U (0.0015)	0.109	0.412	NT	388.70
07-Nov-06	NT	NT	NT	NT	NT	NT	NT	NM
15-May-07	NT	NT	NT	NT	NT	NT	NT	NM
16-Oct-07	NT	NT	NT	NT	NT	NT	NT	NM
29-Apr-08	U (0.0005)	U (0.0005)	U (0.0005)	U (0.0015)	U (0.05)	U (0.413)	NT	388.88
01-Oct-08	NT	NT	NT	NT	NT	NT	NT	NM
12-May-09	U (0.0005)	U (0.0005)	0.00063	0.00231	1.16	U (0.442)	NT	389.18
26-Oct-09	NT	NT	NT	NT	NT	NT	NT	NM
06-Oct-20	NT	NT	NT	NT	NT	NT	NT	NM
<b>GCLs</b>	<b>0.0046</b>	<b>1.1</b>	<b>0.015</b>	<b>0.19</b>	<b>2.2</b>	<b>1.5</b>	<b>NA</b>	<b>NA</b>

Well not tested between May 12, 2009 and October 6, 2020

Monitoring Well MW-8

Date	Benzene (mg/L)	Toluene (mg/L)	Ethylbenzene (mg/L)	Xylenes (mg/L)	GRO (mg/L)	DRO (mg/L)	Sodium (mg/L)	GW Elev (feet)
09-Oct-03	NT	NT	NT	NT	NT	NT	NT	NM
16-Mar-04	U (0.0005)	U (0.0005)	U (0.0005)	U (0.001)	U (0.05)	U (0.37)	NT	388.69
21-Apr-04	U (0.0005)	U (0.0005)	U (0.0005)	U (0.0015)	U (0.05)	U (0.5)	NT	388.79
17-Sep-04	NT	NT	NT	NT	NT	NT	NT	NM
21-Oct-04	0.000298	U (0.0005)	U (0.0005)	U (0.001)	U (0.05)	U (0.4)	NT	388.30
19-May-05	U (0.0005)	U (0.0005)	U (0.0005)	U (0.0015)	U (0.05)	U (0.417)	NT	389.26
26-Sep-05	NT	NT	NT	NT	NT	NT	NT	NM
15-May-06	U (0.0005)	U (0.0005)	U (0.0005)	U (0.0015)	U (0.05)	U (0.41)	NT	388.73
07-Nov-06	NT	NT	NT	NT	NT	NT	NT	NM
15-May-07	U (0.0005)	U (0.0005)	U (0.0005)	U (0.0015)	U (0.05)	U (0.394)	NT	388.41
16-Oct-07	NT	NT	NT	NT	NT	NT	NT	NM
29-Apr-08	U (0.0005)	U (0.0005)	U (0.0005)	U (0.0015)	U (0.05)	U (0.417)	NT	388.87
01-Oct-08	NT	NT	NT	NT	NT	NT	NT	NM
12-May-09	U (0.0005)	0.00062	0.00067	0.00199	U (0.05)	U (0.413)	NT	389.22
26-Oct-09	NT	NT	NT	NT	NT	NT	NT	NM
06-Oct-20	NT	NT	NT	NT	NT	NT	NT	NM
<b>GCLs</b>	<b>0.0046</b>	<b>1.1</b>	<b>0.015</b>	<b>0.19</b>	<b>2.2</b>	<b>1.5</b>	<b>NA</b>	<b>NA</b>

Well not tested between May 12, 2009 and October 6, 2020

Tables of Historical Groundwater Monitoring Data

Monitoring Well MW-9

Date	Benzene (mg/L)	Toluene (mg/L)	Ethylbenzene (mg/L)	Xylenes (mg/L)	GRO (mg/L)	DRO (mg/L)	Sodium (mg/L)	GW Elev (feet)
09-Oct-03	NT	NT	NT	NT	NT	NT	NT	NM
16-Mar-04	U (0.0005)	U (0.0005)	U (0.0005)	U (0.001)	U (0.05)	U (0.37)	NT	388.27
21-Apr-04	U (0.0005)	U (0.0005)	U (0.0005)	U (0.0015)	U (0.05)	U (0.5)	NT	388.88
17-Sep-04	NT	NT	NT	NT	NT	NT	NT	NM
21-Oct-04	U (0.0002)	U (0.0005)	U (0.0005)	U (0.001)	U (0.05)	U (0.4)	NT	388.22
19-May-05	U (0.0005)	U (0.0005)	U (0.0005)	U (0.0015)	U (0.05)	U (0.391)	NT	389.41
26-Sep-05	NT	NT	NT	NT	NT	NT	NT	NM
15-May-06	U (0.0005)	U (0.0005)	U (0.0005)	U (0.0015)	U (0.05)	U (0.391)	NT	388.83
07-Nov-06	NT	NT	NT	NT	NT	NT	NT	NM
15-May-07	U (0.0005)	U (0.0005)	U (0.0005)	U (0.0015)	U (0.05)	U (0.41)	NT	388.33
16-Oct-07	NT	NT	NT	NT	NT	NT	NT	NM
29-Apr-08	U (0.0005)	U (0.0005)	U (0.0005)	U (0.0015)	U (0.05)	U (0.417)	NT	388.94
01-Oct-08	NT	NT	NT	NT	NT	NT	NT	NM
12-May-09	U (0.0005)	U (0.0005)	U (0.0005)	0.00182	U (0.05)	U (0.400)	NT	389.33
26-Oct-09	NT	NT	NT	NT	NT	NT	NT	NM
06-Oct-20	NT	NT	NT	NT	NT	NT	NT	NM
<b>GCLs</b>	<b>0.0046</b>	<b>1.1</b>	<b>0.015</b>	<b>0.19</b>	<b>2.2</b>	<b>1.5</b>	<b>NA</b>	<b>NA</b>

Well not tested between May 12, 2009 and October 6, 2020

**Tables of Historical Groundwater Monitoring Data**

**Monitoring Well MW-10**

<b>Date</b>	<b>Benzene (mg/L)</b>	<b>Toluene (mg/L)</b>	<b>Ethylbenzene (mg/L)</b>	<b>Xylenes (mg/L)</b>	<b>GRO (mg/L)</b>	<b>DRO (mg/L)</b>	<b>Sodium (mg/L)</b>	<b>GW Elev (feet)</b>
09-Oct-03	NT	NT	NT	NT	NT	NT	NT	NM
17-Sep-04	<b>0.0103</b>	U (0.0005)	U (0.0005)	U (0.0015)	U (0.05)	U (0.385)	NT	NM
21-Oct-04	U (0.0002)	U (0.0005)	U (0.0005)	U (0.001)	U (0.05)	<b>2.19</b>	NT	387.01
19-May-05	U (0.0005)	U (0.0005)	U (0.0005)	U (0.0015)	U (0.05)	U (0.391)	NT	387.92
26-Sep-05	U (0.0005)	U (0.0005)	U (0.0005)	U (0.0015)	U (0.05)	U (0.397)	NT	387.87
15-May-06	U (0.0005)	U (0.0005)	U (0.0005)	U (0.0015)	U (0.05)	U (0.391)	NT	387.69
07-Nov-06	U (0.0005)	U (0.0005)	U (0.0005)	U (0.0015)	U (0.05)	U (0.442)	NT	387.72
15-May-07	U (0.0005)	U (0.0005)	U (0.0005)	U (0.0015)	U (0.05)	U (0.41)	NT	387.31
16-Oct-07	U (0.0005)	0.000745	U (0.0005)	0.00843	U (0.05)	U (0.427)	NT	387.31
29-Apr-08	U (0.0005)	U (0.0005)	U (0.0005)	U (0.0015)	U (0.05)	U (0.424)	NT	387.79
01-Oct-08	U (0.0005)	U (0.0005)	U (0.0005)	U (0.0015)	U (0.05)	U (0.49)	NT	388.12
12-May-09	U (0.0005)	U (0.0005)	U (0.0005)	U (0.0015)	U (0.05)	U (0.403)	NT	388.04
26-Oct-09	U (0.0005)	U (0.001)	U (0.001)	U (0.003)	U (0.05)	U (0.417)	NT	387.77
15-Jun-10	U (0.0005)	U (0.0005)	U (0.0005)	U (0.00976)	U (0.05)	U (0.417)	NT	387.95
14-Oct-10	U (0.0005)	U (0.001)	U (0.001)	U (0.003)	U (0.05)	U (0.397)	NT	387.82
24-May-11	U (0.0005)	U (0.0005)	U (0.0005)	U (0.0015)	U (0.05)	U (0.410)	NT	387.92
26-Oct-11	U (0.0005)	U (0.0005)	U (0.0005)	U (0.0015)	U (0.05)	U (0.410)	NT	387.79
22-May-12	U (0.0005)	U (0.0005)	U (0.0005)	U (0.0015)	U (0.05)	U (0.410)	NT	387.87
11-Oct-12	U (0.0005)	U (0.001)	U (0.001)	U (0.003)	U (0.05)	U (0.413)	NT	388.03
21-May-13	U (0.0005)	U (0.0005)	U (0.0005)	U (0.0015)	U (0.05)	U (0.410)	NT	388.09
25-Sep-13	U (0.0005)	U (0.0005)	U (0.0005)	U (0.0015)	U (0.05)	U (0.403)	NT	388.21
06-May-14	U (0.0005)	U (0.0005)	U (0.0005)	0.0027	U (0.05)	U (0.41)	NT	388.19
17-Sep-14	U (0.0005)	U (0.0005)	U (0.0005)	U (0.0015)	U (0.05)	U (0.41)	NT	389.21
26-May-15	U (0.001)	U (0.001)	U (0.001)	U (0.001)	U (0.05)	U (0.22)	NT	388.95
06-Oct-15	U (0.001)	U (0.001)	U (0.001)	U (0.003)	U (0.1)	0.41	NT	388.59
11-May-16	U (0.0020)	U (0.001)	U (0.001)	U (0.003)	U (0.1)	U (0.42)	NT	388.07
05-Oct-16	U (0.0020)	U (0.002)	U (0.003)	U (0.002)	U (0.05)	<b>2.6</b>	NT	388.42
08-May-17	U (0.002)	U (0.002)	U (0.003)	0.0056	U (1)	U (0.11)	NT	388.32
05-Sep-17	U (.0004)	U (0.001)	U (0.001)	U (0.003)	U (0.150)	U (0.280)	NT	388.28
14-Jun-18	U (0.003)	U (0.002)	U (0.003)	U (0.002)	U (0.25)	U (0.12)	NT	388.37
30-Oct-18	U (0.003)	U (0.002)	U (0.003)	U (0.003)	U (0.25)	U (0.12)	NT	388.19
09-May-19	U (0.003)	U (0.002)	U (0.003)	U (0.003)	U (0.25)	U (0.12)	NT	388.01
22-Oct-19	U (0.003)	U (0.002)	U (0.003)	U (0.003)	U (0.25)	U (0.12)	NT	388.37
18-Aug-20	U (0.0002)	U (0.0005)	U (0.0005)	U (0.0015)	U (0.050)	J (0.283)	NT	388.65
06-Oct-20	U (0.001)	U (0.001)	U (0.001)	U (0.003)	U (0.0100)	U (0.800)	5.51	388.32
<b>GCLs</b>	<b>0.0046</b>	<b>1.1</b>	<b>0.015</b>	<b>0.19</b>	<b>2.2</b>	<b>1.5</b>	NA	NA

Tables of Historical Groundwater Monitoring Data

Monitoring Well 17-2

Date	Benzene (mg/L)	Toluene (mg/L)	Ethylbenzene (mg/L)	Xylenes (mg/L)	GRO (mg/L)	DRO (mg/L)	Sodium (mg/L)	GW Elev (feet)
30-Oct-18	U (0.003)	U (0.002)	<b>0.18</b>	<b>0.9</b>	<b>3.9</b>	<b>2.5</b>	NT	NM
10-May-19	U (0.003)	U (0.002)	0.0051	0.012	U (0.25)	0.91	NT	NM
22-Oct-19	U (0.003)	U (0.002)	<b>0.210</b>	<b>0.790</b>	<b>3.5</b>	1.4 H	NT	NM
18-Aug-20	J 0.0017	J 0.00186	<b>0.084</b>	<b>0.320</b>	1.76	<b>1.96</b>	41.6	389.83
06-Oct-20	J 0.00132	U (0.001)	<b>0.1130</b>	<b>0.591</b>	2.08	<b>2.43</b>	75.8	389.41
<b>GCLs</b>	<b>0.0046</b>	<b>1.1</b>	<b>0.015</b>	<b>0.19</b>	<b>2.2</b>	<b>1.5</b>	NA	NA

Monitoring Well 17-5

Date	Benzene (mg/L)	Toluene (mg/L)	Ethylbenzene (mg/L)	Xylenes (mg/L)	GRO (mg/L)	DRO (mg/L)	Sodium (mg/L)	GW Elev (feet)
14-Jun-18	<b>0.025</b>	0.52	<b>0.064</b>	<b>0.548</b>	1.7	0.17	NT	NM
30-Oct-18	<b>0.055</b>	0.21	<b>0.15</b>	<b>0.505</b>	<b>3.7</b>	0.26	NT	NM
09-May-19	0.0032	0.0026	<b>0.016</b>	0.048	0.31	0.92	NT	NM
22-Oct-19	<b>0.022</b>	0.360	<b>0.230</b>	<b>0.721</b>	<b>3.7</b>	0.47 H	NT	NM
18-Aug-20	<b>0.0308</b>	0.386	<b>0.151</b>	<b>0.896</b>	<b>2.68</b>	0.825	12.4	389.82
06-Oct-20	<b>0.0314</b>	0.144	<b>0.158</b>	<b>0.401</b>	1.68	J 0.569	14.1	389.43
<b>GCLs</b>	<b>0.0046</b>	<b>1.1</b>	<b>0.015</b>	<b>0.19</b>	<b>2.2</b>	<b>1.5</b>	NA	NA

Key:

DRO - diesel range organics

GCL - ground water cleanup levels

GRO - gasoline range organics

GW Elev - ground water elevation

J - The identification of the analyte is acceptable; the reported value is an estimate.

H - Sample was prepped or analyzed beyond the specified holding time

mg/L - milligrams per liter

NA - not applicable

NM - not measured

NR - Reported as an unreliable result by the laboratory.

NT - not tested

U - Undetected above practical quantitation limits.

Analytical data for the June 2010 Monitoring Event may have an associated low bias for some samples.

See ADEC laboratory QC checklist for impacted analytes.

**Bold**, shade indicates concentration exceeds the GCL.