

Speedway Store 5314
(Former Tesoro 2 Go Mart #76)
ADEC File #2265.26.037

March 2021 1Q GWM Event Report

Prepared For



TABLE OF CONTENTS

ACRONYMS AND ABBREVIATIONS	II
1.0 EXECUTIVE SUMMARY	1
2.0 SITE BACKGROUND	1
3.0 FIELD ACTIVITIES	1
4.0 GROUNDWATER MONITORING RESULTS	2
4.1 GROUNDWATER ELEVATIONS	2
4.2 INTRINSIC WATER QUALITY PARAMETERS	2
4.3 ANALYTICAL WATER QUALITY DATA	3
4.4 QUALITY ASSURANCE (QA)/ QUALITY CONTROL (QC) REVIEW	4
5.0 REMEDIATION SYSTEM	5
6.0 DISCUSSION OF FINDINGS	5
7.0 CONCLUSIONS AND RECOMMENDATIONS	6
8.0 LIMITATIONS	6

LIST OF TABLES

Table 1 Groundwater Elevations	3
Table 2 Intrinsic Water Quality Parameters	3
Table 3 Groundwater Analytical Results for BTEX, GRO, and DRO	4
Table 4 Laboratory Quality Control Objectives	5

LIST OF FIGURES

Figure 1	Location and Vicinity Map
Figure 2	Site Plan with Groundwater Analytical Results
Figure 3	Graphs of Contaminant Concentrations and Groundwater Elevations

LIST OF APPENDICES

Appendix A	Site Background
Appendix B	Field Methods and Procedures
Appendix C	Field Measurements and Hydraulic Gradient Plot
Appendix D	Tables of Historical Monitoring Data
Appendix E	Laboratory Analytical Report and ADEC Laboratory Data Review Checklist

ACRONYMS AND ABBREVIATIONS

AAC	Alaska Administrative Code
ADEC	Alaska Department of Environmental Conservation
AK	Alaska Test Method
amsl	above mean sea level
BTEX	benzene, toluene, ethylbenzene, and xylenes
Chemox	chemical oxidation
DO	dissolved oxygen
DRO	diesel range organics
EPA	U.S. Environmental Protection Agency
GCL	groundwater cleanup level
GRO	gasoline range organics
Klozur [®] One	Trademarked chemical oxidizer developed by PeroxyChem
mg/L	milligrams per liter
MW	monitoring well
PAH	polycyclic aromatic hydrocarbon
PQL	practical quantitation limit
ORP	oxidation-reduction potential
QA	quality assurance
QC	quality control
RW	remediation well
Speedway	Speedway, LLC
Stantec	Stantec Consulting Services, Inc.
Tesoro	Tesoro Refining and Marketing Company
UST	underground storage tank
VOC	Volatile Organic Compounds

1.0 EXECUTIVE SUMMARY

This first quarter 2021 monitoring event report was prepared by Stantec Consulting Services, Inc. (Stantec), on behalf of Speedway, LLC for Speedway Store 5314 (Tesoro 2 Go Mart #76), located at 3600 Palmer-Wasilla Highway, Wasilla, Alaska (**Figure 1**). The methods used for this monitoring event were conducted in accordance with the Alaska Department of Environmental Conservation (ADEC) approved 2021 Corrective Action Work Plan for this site.

This monitoring event was conducted on March 23, 2021 by John Marshall, Environmental Scientist, and Eli Fredrickson, Geologic Project Specialist, both with Stantec. The monitoring event included the following field activities: measuring the depth to groundwater; measuring water quality parameters; and collecting and analyzing groundwater samples from Monitoring Wells MW-1, MW-2, MW-3, MW-4, and Remediation Well RW19-1.

Results of the groundwater analytical sampling showed that analytes detected above ADEC groundwater cleanup levels (GCLs) in the primary groundwater samples were:

- Monitoring well MW-2: Benzene.
- Monitoring well MW-3: Benzene, ethylbenzene, xylenes, toluene, gasoline range organics (GRO), and diesel range organics (DRO). The DRO exceedance was detected in the duplicate sample.
- Monitoring well MW-4: Benzene.

The hydraulic gradient across the site was found to be approximately 0.024 feet per foot directed toward the northwest at 340 degrees; however, the hydraulic flow of the groundwater does not take into account the influence of the drawdown well (RW 19-1) since the well's pumping level was not measured. The groundwater gradient and flow direction are consistent with past monitoring events. A historical summary of the groundwater flow for the last 10 monitoring events is shown in the "rose diagram" presented on the site plan in Figure 2.

The operation of the groundwater recirculation well (RW 19-1) was checked and noted to be operating within normal range. The submersible pump runs on a continuous basis and observed to discharge approximately a total flow rate of 1.5 gallons per minute into the three on-site injection wells (RW-1, RW-2 and RW-3) that are located within the "footprint" of the former underground storage tank (UST).

2.0 SITE BACKGROUND

Background information for this site is summarized in **Appendix A**.

3.0 FIELD ACTIVITIES

The following field activities were conducted during this monitoring event:

- Measured the depth to groundwater in Monitoring Wells MW-1, MW-2, MW-3, and MW-4. Groundwater depth measurements were used to calculate the hydraulic gradient and direction of flow for the groundwater table.
- Measured the following intrinsic water quality parameters in all five monitoring/remediation wells: pH, temperature, dissolved oxygen (DO), oxidation-reduction potential (ORP), and specific conductance.
- Collected groundwater samples from all five monitoring/remediation wells and submitted them for laboratory analysis of: U.S. Environmental Protection Agency (EPA) Method 8260C for benzene, toluene, ethylbenzene, and xylenes (BTEX); Alaska Test Method (AK)101 for GRO; AK102 for DRO and metals (ICP) by Method 6010C for sodium.

Field methods and procedures are provided in **Appendix B**. Field measurements are provided in **Appendix C**.

4.0 GROUNDWATER MONITORING RESULTS

4.1 GROUNDWATER ELEVATIONS

Table 1 presents groundwater elevations at this site based on the depths to static groundwater levels measured during this monitoring event. The average hydraulic gradient across the site was found to be approximately 0.024 feet per foot directed toward the northwest at 340 degrees; however, the hydraulic flow of the groundwater does not take into account the influence of the drawdown well (RW 19-1) since the well’s pumping level was not measured. Groundwater gradients and bearings from past 11 monitoring events are presented in the “rose diagram” on **Figure 2**.

Table 1 Groundwater Elevations

Measured on March 23, 2021

Monitoring Well Identification	Top of Casing Elevation (feet above datum) ¹	Depth to Groundwater (feet btoc)	Groundwater Elevation (feet above datum) ¹
MW-1	94.74	21.35	73.39
MW-2	95.08	21.54	73.54
MW-3	94.52	19.40	75.12
MW-4	95.02	21.18	73.84
RW19-1	95.71	NM	NM

Key:

1 – Based on a vertical control survey of October 12, 2020, using an elevation datum of 100.00 feet established on the benchmark on the concrete base of the existing on-site drinking water well.

feet btoc – feet below top of monitoring well casing

NM – Not Measured

4.2 INTRINSIC WATER QUALITY PARAMETERS

Intrinsic water quality data collected during this monitoring event is presented in **Table 2**. The ORP measurements ranged from 123.0 millivolts (mV) in Monitoring Well MW-3 to 209.6 mV in

Monitoring Well MW-2 which were considerably different compared to previous monitoring events. The pH values were relatively consistent between monitoring wells and within an expected range at slightly below neutral (7.0). Specific conductance readings ranged from 790 micro-Siemens per centimeter ($\mu\text{S}/\text{cm}$) to 1419 $\mu\text{S}/\text{cm}$. DO measurements ranged from a low of 0.61 milligrams per liter (mg/L) in Monitoring Well MW-4 to 5.70 mg/L in MW-2.

Table 2 Intrinsic Water Quality Parameters
Measurements taken on March 23, 2021

Well ID	Volume Purged (gallons)	Sheen/Odor	Temp. ($^{\circ}\text{C}$)	pH	Dissolved Oxygen ¹ (mg/L)	ORP (mV)	Specific Conductance ($\mu\text{S}/\text{cm } ^{\circ}\text{C}$)
MW-1	1.56	N/N	6.8	6.05	1.15	181.3	1419
MW-2	2.76	N/N	4.8	5.99	5.70	209.6	1338
MW-3	3.12	Y/Y	5.7	6.36	0.88	123.0	833
MW-4	3.54	N/N	6.2	6.07	0.61	133.2	1040
RW19-1	N/A	N/N	11.3	6.17	NM	135.6	790

Key:

$^{\circ}\text{C}$ – degrees Celsius

$\mu\text{S}/\text{cm } ^{\circ}\text{C}$ – microSiemens per centimeter $^{\circ}\text{C}$

mg/L – milligrams per liter

mV – millivolts

N – no

1 – Dissolved oxygen calibration out of range.

ORP – oxidation-reduction potential

pH – $-\log [\text{H}^+]$

SC – specific conductance at 25°C

Temp. – temperature

Y – yes

NM – Not Measured

4.3 ANALYTICAL WATER QUALITY DATA

Historical monitoring data for this site are tabulated in **Appendix D**. Laboratory analytical results for BTEX, GRO, DRO, and sodium detected in groundwater samples collected during this monitoring event are summarized in **Table 3**. The complete laboratory analytical report is provided in **Appendix E**.

Table 3 Groundwater Analytical Results for BTEX, GRO, and DRO
Samples collected on March 23, 2021

Sample Identification	Benzene ¹ (mg/L)	Toluene ¹ (mg/L)	Ethylbenzene ¹ (mg/L)	Xylenes ¹ (mg/L)	GRO (mg/L)	DRO (mg/L)	Sodium (mg/L)
MW-1	0.000526 J	U (0.001)	U (0.001)	U (0.003)	0.0130 B,J	U (0.840)	33.2
MW-2	0.00542	U (0.001)	U (0.001)	U (0.003)	0.0227 B,J	U (0.840)	48.1
MW-3	0.450	1.21	3.73	21.6	54.3	U (0.840)	U (3.00)
MW-4	0.0790	U (0.001)	0.0178	0.0345	0.274 B	0.266	47.1
RW 19-1	U (0.00100)	U (0.001)	U (0.00100)	U (0.00300)	0.0119	U (0.840)	25.9
DUP01 (dup. of MW-3)	0.473	1.25	2.91	17.1	49.1	4.56	40.2

Trip Blank	U (0.001)	U (0.001)	U (0.001)	U (0.003)	NM	NM	NM
GCLs	0.0046	1.1	0.015	0.19	2.2	1.5	NA

Key:

1 – Analyzed by U.S. EPA Method 8260C

AK – Alaska Test Method

BTEX – benzene, toluene, ethylbenzene, and xylenes

DRO – Diesel range organics, analyzed by AK102

GCLs – Groundwater cleanup levels, per Alaska Department of Environmental Conservation 18 Alaska Administrative Code 75.345, Table C, updated September 29, 2018.

GRO – Gasoline range organics, analyzed by AK101

mg/L – milligrams per liter

U – Undetected above laboratory reporting limits shown in parentheses.

Dup. – Duplicate

B – The same analyte is found in the associated blank.

J – The identification of the analyte is acceptable; the reported value is an estimate.

NM – Not measured.

Bold indicates the concentration exceeds the GCL or, if not detected, the practical quantitation limit exceeds the GCL.

4.4 QUALITY ASSURANCE (QA)/ QUALITY CONTROL (QC) REVIEW

Pace analytical performed all analysis of groundwater samples for this sampling event. **Table 4** provides a summary of the laboratory QC objectives and outcomes for this monitoring event. Laboratory QC data and the ADEC Laboratory Data Review Checklist are included with the laboratory report in **Appendix E**.

A duplicate sample set was collected to determine the precision of the field collection and laboratory analyses for this sampling event. Sample DUP01 is a duplicate of sample MW-3. The data presented in **Table 4** shows that the precision for the duplicate sample set (analytes that were detected above the practical quantitation limit [PQL] and exceeded GCLs) was within the established QA criteria tolerances for benzene, toluene, ethylbenzene, and xylenes. Precision could not be calculated for DRO because the DRO concentration was below detection limits in sample MW-03 and was 4.56 mg/L in the duplicate; there is no discernible reason for the difference in concentrations.

Table 4 Laboratory Quality Control Objectives

Quality Control Designation	Tolerance	Results for this Event
Holding Times		
DRO/Water/to analyze	40 days	8 days
DRO/Water/to extract	14 days	7 days
GRO/Water/to analyze	14 days	10 days
BTEX/Water/to analyze	14 days	7 - 14 days
Field Duplicates – Precision		

Benzene/Water	± 30%	5.0 %
Toluene/Water	± 30%	3.3 %
Ethylbenzene/Water	± 30%	24.7 %
Xylenes/Water	± 30%	23.3 %
GRO/Water	± 30%	10.1 %
DRO/Water	± 30%	NC

Key:

% – percent

± – plus or minus

BTEX – benzene, toluene, ethylbenzene, and xylenes

DRO – diesel range organics

GRO – gasoline range organics

NC – Not computed due to non-detectable levels in original and/or duplicate samples

5.0 REMEDIATION SYSTEM

The “Pump and Treat” groundwater remediation system uses the submersible pump in RW 19-1 for the continuous (24-hours per day) recirculation of groundwater. The pump discharges into three remediation wells (RW-1, RW-2 and RW-3) located under the store building in the footprint of the former UST (**Figure 2**).

The discharge of pumped groundwater from RW 19-1 is coupled with periodic injection of chemox products. The last chemox injection took place on September 20, 2020, when Stantec completed an injection of two 55-pound bags of Klozur One[®] product mixed with 50 gallons of water was injected into each of the three remediation wells of the former bio-spargers system (RW-1, RW-2, and RW-3) for a total 330 pounds of Klozur One[®] and 750 gallons of water pumped from RW19-1 was injected into the in-situ groundwater treatment system. The next scheduled injection of chemox into the treatment wells is planned for the second quarter of 2021.

6.0 DISCUSSION OF FINDINGS

Historical graphs of contaminant concentrations for Monitoring Wells MW-1, MW-2, MW-3, MW-4, and RW19-1 are presented on **Figure 3**. Results for previous monitoring events are presented in **Appendix D**.

Results of the groundwater analytical sampling showed that analytes detected above ADEC GCL’s samples were:

- Monitoring well MW-2: Benzene.
- Monitoring well MW-3: Benzene, ethylbenzene, xylenes, toluene, gasoline range organics (GRO), and diesel range organics (DRO). The DRO exceedance was detected in the duplicate sample.
- Monitoring well MW-4: Benzene.

The approximate hydraulic gradient across the site was found to be approximately 0.024 feet per foot directed toward the northwest at 340 degrees; however, the hydraulic flow of the groundwater does not take into account the influence of the drawdown well (RW 19-1) since the well's pumping level was not measured. The groundwater flow direction and gradient are consistent with past monitoring events.

7.0 CONCLUSIONS AND RECOMMENDATIONS

No anomalies were found during the March 2021 monitoring event at this site that would require additional corrective action or changes to the ADEC-approved year 2021 Corrective Action Work Plan for this site.

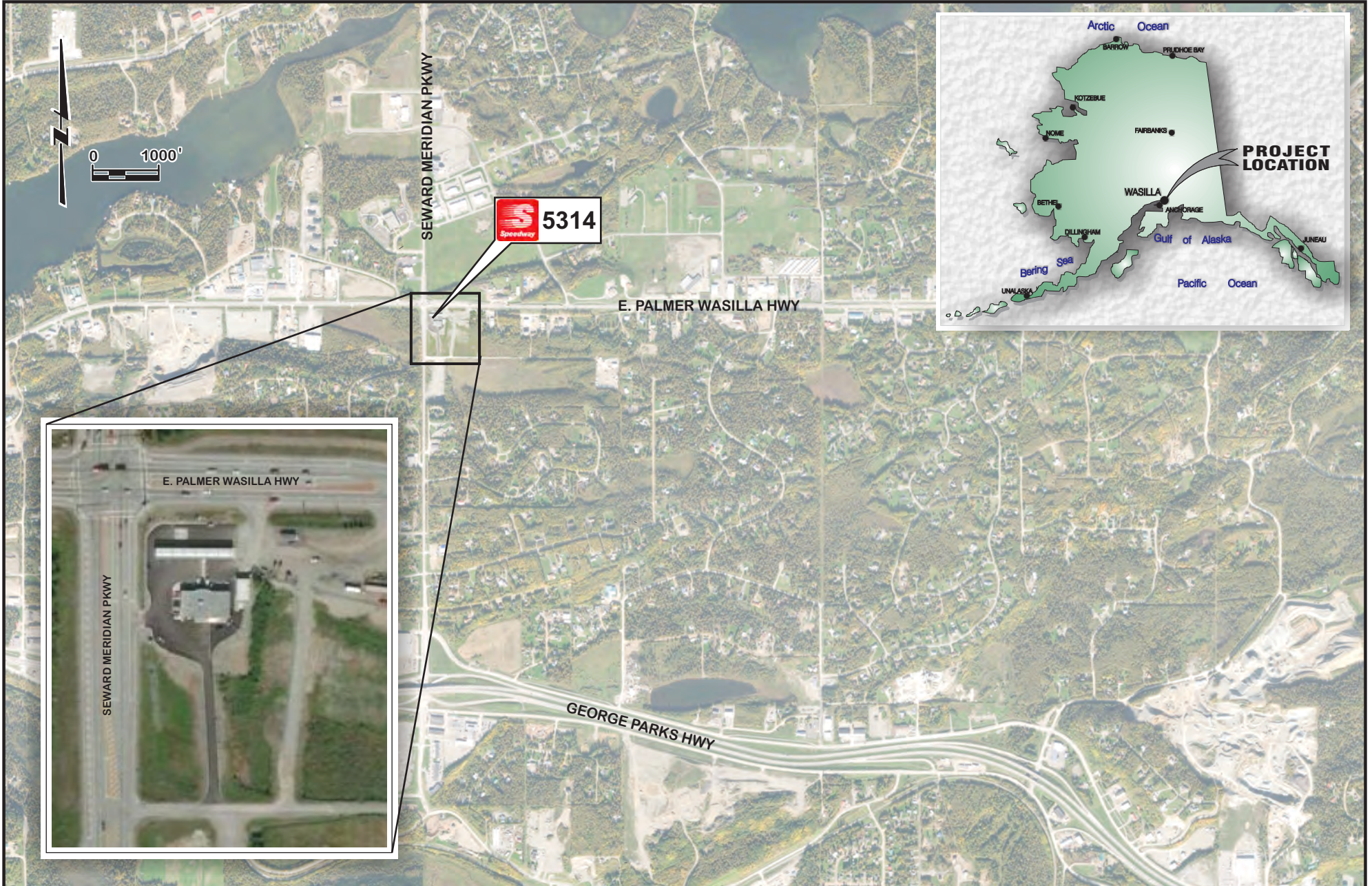
8.0 LIMITATIONS

Stantec conducted this monitoring event in accordance with the Corrective Action Work Plan approved by ADEC, and in a manner consistent with the level of skill ordinarily exercised by members of the profession currently practicing under similar conditions. All sampling activities were completed in accordance with the ADEC *Underground Storage Tanks Procedures Manual – Standard Sampling Procedures* (March 22, 2017). No other warranty, expressed or implied, is made. Data and recommendations made herein were prepared for Speedway Store 5314 (Tesoro 2 Go Mart #76) and Speedway, LLC. Information herein is for use at this site in accordance with the purpose of the report described.

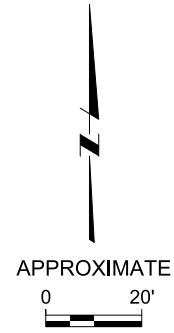
FIGURES

Figure 1 Location and Vicinity Map

Figure 2 Site Plan with Groundwater Levels and
Analytical Results

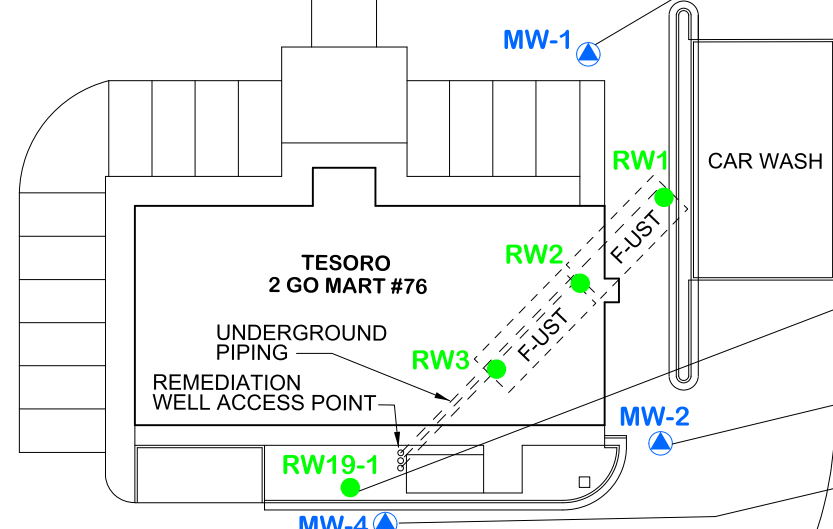
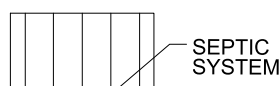
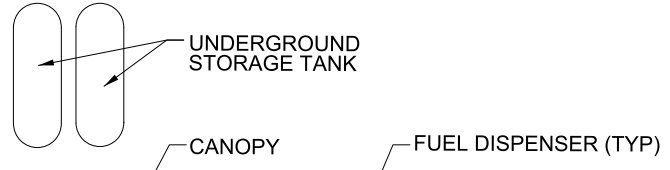


E. PALMER WASILLA HWY

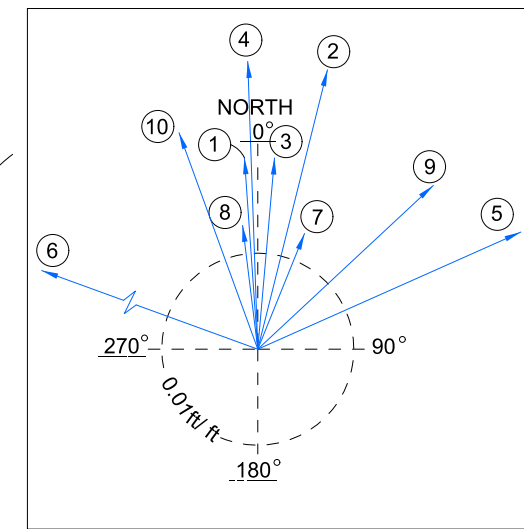


APPROXIMATE LOCATION OF PROPERTY LINE
3600 PALMER-WASILLA HWY

WATER SUPPLY WELL LOCATION



CAMERON ACRES
BLOCK 1
LOT 7



GROUNDWATER FLOW SUMMARY			
	DATE	BEARING	GRADIENT (ft/ft)
①	FEB. 15, 2018	356°	0.02
②	JUNE 29, 2018	14°	0.03
③	SEP. 11, 2018	5°	0.02
④	OCT. 26, 2018	358°	0.03
⑤	FEB. 25, 2019	66°	0.03
⑥	APRIL 25, 2019	290°	0.04
⑦	JULY 25, 2019	22°	0.013
⑧	OCT. 18, 2019	353°	0.013
⑨	AUG. 11, 2020	47°	0.025
⑩	MARCH 23, 2021	340°	0.024

MW-1	
Benzene	0.000526
Toluene	U (0.001)
Ethylbenzene	U (0.001)
Xylenes	U (0.003)
GRO	0.013
DRO	U (0.84)
Sodium	33.2
GW Elev	73.36

MW-2	
Benzene	0.00542
Toluene	U (0.001)
Ethylbenzene	U (0.001)
Xylenes	U (0.003)
GRO	0.0227
DRO	U (0.84)
Sodium	48.1
GW Elev	73.50

RW19-1	
Benzene	U (0.001)
Toluene	U (0.001)
Ethylbenzene	U (0.001)
Xylenes	U (0.003)
GRO	0.0119
DRO	U (0.84)
Sodium	25.9
GW Elev	NC

MW-4	
Benzene	0.079
Toluene	U (0.001)
Ethylbenzene	0.0178
Xylenes	0.0345
GRO	0.274
DRO	0.276
Sodium	47.1
GW Elev	73.82

MW-3	
Benzene	0.45
Toluene	1.21
Ethylbenzene	3.73
Xylenes	21.6
GRO	54.3
DRO	U (0.84)
Sodium	U (3.00)
GW Elev	75.10

MW-3 (Duplicate)	
Benzene	0.473
Toluene	1.25
Ethylbenzene	2.91
Xylenes	17.1
GRO	49.1
DRO	4.56
Sodium	40.2
GW Elev	75.10

- LEGEND:**
- F-UST FORMER UNDERGROUND STORAGE TANK
 - ▲ MONITORING WELL LOCATION
 - REMEDIATION WELL LOCATION
 - DRO DIESEL RANGE ORGANICS
 - GRO GASOLINE RANGE ORGANICS
 - H SAMPLE WAS PREPPED OR ANALYZED BEYOND THE SPECIFIED HOLDING TIME
 - NC NOT CALCULATED
 - RW REMEDIATION WELL
 - U UNDETECTED ABOVE PRACTICAL QUANTITATION LIMITS SHOWN IN PARENTHESES
 - W DRINKING WATER WELL

- NOTES:**
- RESULTS SHOWN ARE FOR WELLS SAMPLED ON MARCH 23, 2021.
 - RESULTS ARE IN MILLIGRAMS PER LITER
 - BOLD/ RED TEXT INDICATES CONTAMINANT CONCENTRATIONS ABOVE CLEANUP LEVELS FOR THIS SITE

FILE: C:\D\CAD\Proj\Speedway_5314 (TGM)Mar076_185705377\MorEvent\2021\01_May 2021\Fig02_Site Plan with GmrdWtr.dgn
TIME: 05-MAY-2021 17:48

APPENDIX A

Site Background

APPENDIX A – SITE BACKGROUND

Speedway Store 5314 (former Tesoro 2 Go Mart #76) located at 3600 Palmer-Wasilla Highway, Wasilla, Alaska
ADEC File #100.26.159

Speedway Store 5314 (former Tesoro 2 Go Mart #76) is a retail fuel and convenience store facility located at 3600 Palmer-Wasilla Highway, Wasilla, Alaska (Figure 1). The legal description for the property is Lot 7, Block 1, Cameron Acres Subdivision, Matanuska-Susitna Borough.

Two 15,000-gallon underground storage tanks (USTs) were installed at the site in 1995. Based on historical records, this is the first retail fuel convenience store to occupy this location. The site is covered with asphalt paving with concrete in the area over the USTs and fuel dispenser islands. The former UST system and dispensing components were removed from September to October 2014 and replaced with a new UST fueling system. The new UST fueling system consists of two 15,000-gallon fiberglass-reinforced plastic, double-walled USTs installed on January 29, 2015, and seven fuel dispensers (six gasoline and one diesel). Distribution piping consists of 2-inch fiberglass primary and 3-inch fiberglass secondary.

In addition, the former convenience store was demolished and replaced with a new convenience store that was constructed at a different location on the property. The property is over 1 acre in size and is served with an on-site drinking water well and on-site septic tank and drainfield system.

October 2014. During the 2014 Site Assessment of the UST closure, a petroleum fuel release was discovered in the subsurface soils partially surrounding and underlying the USTs. At that time, a very deep test pit was excavated beneath the former USTs to the groundwater table. Field screening with a photoionization detector (PID) indicated that petroleum contamination was present throughout the vadose zone and extended to the underlying groundwater table. Due to site safety concerns with sloughing soils, it was not feasible to excavate all of the contaminated soil below the former USTs.

A Release Investigation (RI) was conducted by MWH Americas, Inc. (MWH) subsequent to the closure of the former USTs. The RI included the installation of a soil vapor extraction (SVE) remediation well and several groundwater monitoring wells. MWH completed a groundwater monitoring event after the monitoring wells were installed. Follow-up water samples were collected from the onsite drinking water well for appropriate laboratory analyses.

The findings of the RI indicated a significant amount of petroleum contamination had impacted the subsurface soils and shallow groundwater table at the site. The soil samples collected indicate higher concentrations of gasoline range organics (GRO) and benzene, toluene, ethylbenzene, and xylenes (BTEX) constituents directly below the location occupied by the former USTs at Remediation Wells RW-2 and RW-3. Benzene was detected above Alaska Department of Environmental Conservation (ADEC) groundwater cleanup level (GCL) in groundwater at monitoring wells installed at the site. GRO contaminants have also impacted the groundwater table. The system has been monitored on a quarterly basis since the completion of the RI.

February 2015. Benzene exceeded the GCL in Monitoring Well MW-2. BTEX, GRO, and diesel range organics (DRO) exceeded GCLs in Monitoring Well MW-3. Benzene, toluene, and GRO exceeded GCLs in Monitoring Well MW-4.

June 2015. MWH installed and placed into operation a SVE system at the site. Early results indicate that the system is effectively removing petroleum-related vapors from the subsurface. Additionally, a surface water sample was collected from an on-site nearby wetland surface water area. Xylenes and DRO were detected in the water sample; however, the concentrations were below the ADEC groundwater and surface water cleanup levels.

September 2015. Benzene and DRO exceeded GCLs in Monitoring Well MW-2. BTEX and DRO exceeded GCLs in Monitoring Well MW-3. Benzene exceeded GCL in Monitoring Well MW-4. The SVE remediation system blower was offline, requiring maintenance.

November 2015. Benzene exceeded GCL in Monitoring Well MW-1. Benzene, GRO, and DRO exceeded the GCL in Monitoring Well MW-2. Benzene, toluene, and GRO all remained above their GCLs, consistent with the past five monitoring events, at Monitoring Well MW-3.

December 2015. Maintenance was performed on the SVE system on December 31, 2015. A replacement SVE system blower was installed. The system was brought back online on the date of the replacement blower installation. A PID was used to monitor the system effluent after the initial 15 minutes of operation and indicated that 424 parts per million by volume were being removed by the system.

January 2016. Benzene exceeded the GCL in Monitoring Well MW-1. Benzene, toluene, ethylbenzene, and DRO exceeded their GCLs in Monitoring Well MW-2; and benzene, toluene, ethylbenzene, xylenes, GRO, and DRO exceeded their GCLs in Monitoring Well MW-3. The laboratory did not provide results for requested GRO analyses for samples from Monitoring Wells MW-2 and MW-4.

May 2016. In Monitoring Wells MW-1, MW-2, and MW-4, only benzene exceeded GCL. MW-3 exceeded GCLs for all analytes tested. There were no detections in the Carmen Lot 7 drinking water sample. An SVE effluent sample was collected to monitor SVE performance.

October 2016. In Monitoring Well MW-1, only benzene exceeded GCL. In Monitoring Well MW-2, all analytes but toluene and DRO exceeded GCLs. Monitoring Well MW-3 exceeded GCLs for all analytes tested. Monitoring Well MW-4 had no exceedances. There were no detections in the Carmen Lot 7 drinking water sample. An SVE effluent sample was collected to monitor SVE performance.

December 2016. In Monitoring Well MW-1, only benzene exceeded GCL. In Monitoring Well MW-2, all analytes but toluene exceeded GCLs. Monitoring Well MW-3 exceeded GCLs for benzene, GRO, and DRO. Monitoring Well MW-4 and the Carmen Lot 7 drinking water sample had no exceedances. Both Monitoring Wells MW-3 and MW-4 had insufficient sample volumes to complete all analytical testing. The SVE system observed for operation and performance.

February 2017. Benzene was the only analyte to exceed the GCL in Monitoring Wells MW-1 and MW-4. Benzene and ethylbenzene exceeded GCLs in Monitoring Well MW-2, and all analytes exceeded their GCLs in Monitoring Well MW-3. The SVE system was frozen due to record cold temperatures experienced during January 2017. A subsequent site visit on February 16, 2017, was made to thaw and restore the SVE system to normal operation.

April 2017. In addition to testing for BTEX, DRO, and GRO, expanded testing for volatile organic compounds (VOCs), and polynuclear aromatic hydrocarbons (PAHs) were conducted on all monitoring wells. Benzene was the only analyte to exceed the GCL in Monitoring Wells MW-1 and MW-4. BTEX (minus toluene) and GRO exceeded their GCLs in Monitoring Well MW-2, consistent with previous monitoring events. The expanded testing found 1,2,4-trimethylbenzene and naphthalene to also exceed GCLs. In Monitoring Well MW-3, BTEX and DRO exceeded their GCLs, also consistent with previous monitoring events. The expanded testing found 1,2,4-trimethylbenzene, 1,3,5-trimethylbenzene, and naphthalene to also exceed GCLs. Pilot Testing (conducted in May 2017) of air injection into remediation wells to volatilize groundwater and smear zone contaminants indicated a slight increase of volatilization when air is injected into RW-2, and RW-3.

September 2017. Except for the following, all analytes were below GCLs in the wells sampled:

- Monitoring Well MW-1 – benzene exceeded the GCL.
- Monitoring Well MW-2 – benzene, ethylbenzene, xylenes and GRO exceeded their GCLs.
- Monitoring Well MW-3 – BTEX, GRO, and DRO were above their GCLs. The MW-3 duplicate sample provided results within established Quality Assurance/Quality Control (QA/QC) standards.
- Monitoring Well MW-4 – benzene, ethylbenzene, xylenes, and GRO exceeded their GCLs.

The SVE contaminant vapor mass removal was less than observed during pilot test in May 2017 and requires additional optimization.

February 2018. Except for the following, all analytes were below GCLs in the wells sampled:

- Monitoring Well MW-1 – benzene.
- Monitoring Well MW-2 – benzene, ethylbenzene, xylenes, and GRO (GRO was not detected, but the Reporting Limit exceeded the GCL).
- Monitoring Well MW-3 – BTEX and GRO (GRO was not detected, but the Reporting Limit exceeded the GCL). The MW-3 duplicate sample provided results within established QA/QC standards.
- Monitoring Well MW-4 – benzene, ethylbenzene, xylenes, and GRO.

The SVE contaminant vapor mass removal was less than previously observed on site. In addition, the field work included an assessment of the buried piping systems for the air sparging (AS) and SVE systems. The assessment was performed with a downhole camera capable of recording

photographs and video of the interior conditions of the piping system. The findings of the downhole camera assessment of the buried piping system was inconclusive.

June 2018. The results from the June 29, 2018, monitoring event supports the continued pattern that GRO contamination persists on site and is observed in Monitoring Wells MW-2 and MW-3. In addition, Monitoring Well MW-3 is consistently the most contaminated well. In summary, the results of the groundwater analytical sampling showed that analytes detected above the GCLs were:

- Monitoring Well MW-1: Benzene.
- Monitoring Well MW-2: Benzene, ethylbenzene, xylenes, GRO, and naphthalene.
- Monitoring Well MW-3: BTEX, GRO and naphthalene. Except for GRO, the duplicate sample provided results within established QA/QC standards.
- Monitoring Well MW-4: Benzene, ethylbenzene, and naphthalene.

A representative water sample from the on-site drinking water well serving the Tesoro 2 Go Mart was sampled and tested for VOCs. The water sample was found to have no detectable levels of contaminants of concern, except the laboratory reporting limits were over the GCLs for 1,1,2-trichloroethane (TCA) and vinyl chloride.

The SVE contaminant vapor mass removal is very low and based on the recent pattern of decline suggest that the SVE system performance requires additional optimization. Alternative treatment options are currently being evaluated and, if determine feasible, a new work plan will be presented to ADEC for review and approval prior to making any changes.

September 2018. Results of the groundwater analytical sampling showed that analytes detected above ADEC GCLs were:

- Monitoring Well MW-1: Benzene.
- Monitoring Well MW-2: Benzene, ethylbenzene, xylenes, GRO, naphthalene, 1,2,4-trimethylbenzene, and 1,3,5-trimethylbenzene.
- Monitoring Well MW-3: Benzene, ethylbenzene, xylenes, GRO, naphthalene, 1,2,4-trimethylbenzene, and 1,3,5-trimethylbenzene.
- Monitoring Well MW-4: Benzene, and 1,2,4-trimethylbenzene.

Several analytes for VOCs were reported as undetected but had laboratory reporting limits that equaled or exceeded their corresponding GCLs. The results from this monitoring event supports the continued pattern that GRO contamination persists at the site and is observed in Monitoring Wells MW-2 and MW-3. In addition, Monitoring Well MW-3 is consistently the most contaminated well.

The approximate hydraulic gradient across the site was found to be approximately 0.03 feet per foot directed toward the north-northeast at 14 degrees. The groundwater flow direction and gradient are consistent with past monitoring events.

The SVE contaminant vapor mass removal is very low and, based on the recent pattern of decline, suggests that the SVE system performance requires additional optimization. Alternative treatment options are currently being evaluated and, if determine feasible, a new work plan will be presented to ADEC for review and approval prior to making any changes.

October 2018. Results of the groundwater analytical sampling showed that analytes detected above ADEC GCLs were:

- Monitoring Well MW-1: Benzene.
- Monitoring Wells MW-2 and MW-3: Benzene, ethylbenzene, xylenes, GRO, naphthalene, 1,2,4-trimethylbenzene, and 1,3,5-trimethylbenzene.
- Monitoring Well MW-4: Benzene.

Several VOCs were reported as undetected but had laboratory reporting limits that equaled or exceeded their corresponding GCLs. The results from this October 26, 2018, monitoring event supports the continued pattern that GRO contamination persists at the site and is observed in Monitoring Wells MW-2 and MW-3. In addition, Monitoring Well MW-3 is consistently the most contaminated on-site monitoring well.

The approximate hydraulic gradient across the site was found to be approximately 0.03 feet per foot directed toward the north at 358 degrees. The groundwater flow direction and gradient are consistent with past monitoring events.

The SVE contaminant vapor mass removal is very low and, based on the recent pattern of decline, suggests that the SVE system performance requires additional optimization. Alternative treatment options are currently being evaluated and, if determined to be feasible, a new work plan will be presented to ADEC in 2019 for review and approval prior to making any changes.

February 2019. Results of the groundwater analytical sampling showed that analytes detected above ADEC GCLs were:

- Monitoring Well MW-2: Benzene, ethylbenzene, xylenes, and GRO.
- Monitoring Well MW-3: Benzene, ethylbenzene, xylenes, and DRO.
- Monitoring Well MW-4: Benzene

The existing bio-sparge treatment system is not functional and will be replaced. In the 2nd quarter of 2019, Stantec plans to install a groundwater recirculation system based on pump and treat technology. The SVE contaminant vapor mass removal is very low and, based on the recent pattern of decline, suggests that the SVE system performance requires additional optimization. Alternative treatment options are currently being evaluated and, if determine feasible, a new work plan will be presented to ADEC for review and approval prior to making any changes.

April 2019. The monitoring event included: measuring the depth to groundwater; measuring water quality parameters; and collecting and analyzing groundwater samples from Monitoring Wells MW-1, MW-2, MW-3, and MW-4, as well as the on-site drinking water well.

Results of the groundwater analytical sampling showed that analytes detected above ADEC GCLs in the primary samples were:

- Monitoring Well MW-2: Benzene, xylenes, GRO, 1,2,4-trimethylbenzene, 1,3,5-trimethylbenzene, and naphthalene.
- Monitoring Well MW-3: Benzene, GRO, and naphthalene.

A representative water sample from the on-site drinking water well serving the Tesoro 2Go Mart was sampled and tested for VOCs. The water sample was found to have no detectable levels of contaminants of concern, except the laboratory reporting limits were over the GCLs for 1,1,2-TCA, 1,2,3-trichloropropane, 1,2-dibromoethane, and vinyl chloride.

The groundwater hydraulic gradient across the site was found to be approximately 0.04 feet per foot directed toward the west-northwest at 290 degrees. The groundwater flow direction and gradient are inconsistent with past monitoring events in that the direction of flow is to the west rather than historically to the north with a slightly higher gradient.

July 2019. The monitoring event included: measuring the depth to groundwater; measuring water quality parameters; and collecting and analyzing groundwater samples from Monitoring Wells MW-1, MW-2, MW-3, and MW-4.

Results of the groundwater analytical sampling showed that analytes detected above ADEC GCLs in the primary samples were:

- Monitoring Well MW-1: Benzene.
- Monitoring Well MW-2: Benzene, ethylbenzene, xylenes, and GRO.
- Monitoring Well MW-3: BTEX, GRO, and DRO.
- Monitoring Well MW-4: Benzene.

The groundwater hydraulic gradient across the site was found to be approximately 0.013 feet per foot directed toward the north-northeast at 22 degrees. The groundwater flow direction and gradient are consistent with past monitoring events.

Stantec plans to drill a new 4" diameter remediation well and repurpose the current bio-sparg system. The new well and bio-sparg system will be converted into a groundwater recirculation system to allow injection of chemical oxidation products. The implementation of this change in the remediation system will occur in the 4th quarter of 2019.

October 2019. The monitoring event included: measuring the depth to groundwater; measuring water quality parameters; and collecting and analyzing groundwater samples from Monitoring Wells MW-1, MW-2, MW-3, and MW-4.

Results of the groundwater analytical sampling showed that analytes detected above ADEC GCLs in the primary samples were:

- Monitoring Well MW-2: Benzene and ethylbenzene.

-
- Monitoring Well MW-3: benzene, ethylbenzene, xylenes, and GRO.
 - Monitoring Well MW-4: Benzene.

The groundwater hydraulic gradient across the site was found to be approximately 0.013 feet per foot directed toward the north at 350 degrees. The groundwater flow direction and gradient are consistent with past monitoring events.

Stantec plans to drill a new 4” diameter remediation well (RW 19-1) and repurpose the current bio-sparg system. The new well and bio-sparg system will be converted into a groundwater recirculation system to allow injection of chemical oxidation products. The implementation of this change in the remediation system will occur in the 2nd quarter of 2020.

August 2020. The 3rd quarter groundwater monitoring event included: measuring the depth to groundwater; measuring water quality parameters; and collecting and analyzing groundwater samples from Monitoring Wells MW-1, MW-2, MW-3, MW-4, and Remediation Well RW19-1.

Results of the groundwater analytical sampling showed that analytes detected above ADEC groundwater cleanup levels (GCLs) in the primary samples were:

- Monitoring Well MW-2: Benzene, ethylbenzene, and xylenes.
- Monitoring Well MW-3: Benzene, ethylbenzene, xylenes, gasoline range organics (GRO), and diesel range organics (DRO).
- Monitoring Well MW-4: Benzene.

The hydraulic gradient across the site was found to be approximately 0.025 feet per foot directed toward the north at 47 degrees. The groundwater flow direction and gradient are consistent with past monitoring events. A historical summary of the groundwater flow for the last 10 monitoring events is shown in the “rose diagram” presented on the Site Plan drawing.

In 2019 Stantec installed a groundwater recirculation system based on pump and treat technology. The 4” diameter remediation well (RW 19-1) that was installed in October 2019, is connected to the existing underground piping system (formerly used for the bio-sparg system) consisting of 3 vertical injection wells located under the northeast portion of the existing store building. Chemical oxidation injection of Klozur One[®] product directly into the 3 vertical injection wells was conducted during this monitoring event. A total of 330 pounds of Klozur One[®] and 750 gallons of water pumped from RW19-1 was injected into the in-situ groundwater treatment system.

October 2020. The 4th quarter groundwater monitoring event included: measuring the depth to groundwater; measuring intrinsic water quality parameters; and collecting and analyzing groundwater samples from monitoring wells MW-01, MW-02, MW-03, MW-04 and remediation well RW19-1.

Results of the groundwater analytical sampling showed that analytes detected above ADEC GCLs in the primary samples were:

- Monitoring well MW-1: Benzene

-
- Monitoring well MW-2: Benzene, ethylbenzene, and 1,2,4-trimethylbenzene.
 - Monitoring well MW-3: Benzene, ethylbenzene, xylenes, gasoline range organics (GRO), diesel range organics (DRO), naphthalene, 1,2,4-trimethylbenzene and 1,3,5-trimethylbenzene.
 - Monitoring well MW-4: Benzene.

No contaminants were detected in the drinking water sample collected from the water spigot in the store's utility sink.

The hydraulic gradient across the site was found to be approximately 0.032 feet per foot directed toward the north-east at 28 degrees. The groundwater flow direction and gradient are consistent with past monitoring events. A historical summary of the groundwater flow for the last 11 monitoring events is shown in the "rose diagram" presented on the Site Plan drawing.

On September 3, 2020 - prior to the 4th quarter groundwater monitoring event, Stantec completed an injection of chemox products. A chemox solution consisting of two 55-pound bags of Klozur One[®] product mixed with 50 gallons of water was injected into each of the three remediation wells of the former bio-sparg system (RW-1, RW-2, and RW-3). An additional 200 gallons of water from RW19-1 was injected directly into each remediation well (RW-1, RW-2, and RW-3) immediately after the injection of the chemox solution. In summary, a total of 330 pounds of Klozur One[®] and 750 gallons of water pumped from RW19-1 was injected into the in-situ groundwater treatment system.

March 2021. The 1st quarter 2021 groundwater monitoring event included: measuring the depth to groundwater; measuring intrinsic water quality parameters; and collecting and analyzing groundwater samples from monitoring wells MW-01, MW-02, MW-03, MW-04 and remediation well RW19-1.

Results of the groundwater analytical sampling showed that analytes detected above ADEC GCLs in the primary samples were:

- Monitoring well MW-2: Benzene.
- Monitoring well MW-3: Benzene, ethylbenzene, xylenes, toluene, gasoline range organics (GRO), and diesel range organics (DRO). The DRO exceedance was detected in the duplicate sample.
- Monitoring well MW-4: Benzene.

The hydraulic gradient across the site was found to be approximately 0.024 feet per foot directed toward the northwest at 340 degrees. The calculated groundwater gradient and flow direction do not account for the water table drawdown associated with remediation well RW19-1. The groundwater gradient and flow direction are consistent with past monitoring events.

The operation of the groundwater recirculation well (RW 19-1) was checked and noted to be operating within normal range. The submersible pump runs on a continuous basis and observed to discharge approximately a total flow rate of 1.5 gallons per minute into the three on-site injection

wells (RW-1, RW-2 and RW-3) that are located within the “footprint” of the former underground storage tank (UST).

APPENDIX B

Field Methods & Procedures

APPENDIX B – FIELD METHODS AND PROCEDURES

Speedway Store 5314 (former Tesoro 2 Go Mart #76) located at 3600 Palmer-Wasilla Highway, Fairbanks, Alaska

Lot 7, Block 1, Cameron Acres Subdivision, Matanuska-Susitna Borough

ADEC File #2265.26.037

The following table presents the proposed tasks for the Alaska Department of Environmental Conservation (ADEC)-approved 2021 Corrective Action Work Plan. The scope of these tasks is based on the results and findings of the monitoring and remediation completed to date at the site.

2021 Work Plan Schedule for Speedway Store 5314 (Former T2GM 76)

Work Plan Task		1 st Quarter	2 nd Quarter	3 rd Quarter	4 th Quarter
Task 1	Monitoring Wells: MW-1, MW-2, MW-3, and MW-4 including Remediation/Recirculation Well RW 19-1	V, G, D, S & I	V, G, D, S & I	V, G, D, S & I	V, G, D, P, S & I
	On-site Domestic Drinking Water Well				D & E
Task 2	O&M Recirculation Groundwater Treatment System	✓	✓	✓	✓
Task 3	Chemical Oxidation Treatment		✓	✓	✓

Key:

AK – Alaska Test Method

D – Diesel range organics by AK102.

EPA – U.S. Environmental Protection Agency

E – Drinking Water parameters by EPA Test Method 524.2.

G – Gasoline range organics by AK101.

I – Indicators, parameters tested include dissolved oxygen, specific conductance, oxygen-reduction potential, pH, and temperature.

O&M – Operation and Maintenance

P – Polynuclear aromatic hydrocarbons (PAHs), i.e., semi-volatile organic compounds, by EPA Test Method 8260C.

S – Sodium analyzed by Metals (ICP) Method 6010C.

The Corrective Action Work Plan for the year 2021 will be implemented by Stantec on behalf of Speedway. Groundwater monitoring will be conducted to track migration and trends of contaminants that are present at the site. All sampling activities will be completed in accordance with ADEC's *Underground Storage Tanks Procedures Manual– Standard Sampling Procedures* (March 22, 2017). The methods that will be used for conducting a monitoring event, unless otherwise noted in the monitoring report, will include:

- The static water levels in the monitoring wells will be measured with respect to the top of each well casing. The elevation of the static water level will be based on an arbitrary datum established on-site during a vertical control survey that will be completed by Stantec on an annual basis. The survey will be performed during the summer after the seasonal frost layer thaws.
- The monitoring wells will be purged of a minimum of three well bore volumes prior to collecting the water samples. A new, disposable, Teflon[®] bailer will be used to sample each well. The first bail of water removed from each well will be examined for petroleum odor, sheen, and any other unique physical features.
- Water and vapor samples will be collected in laboratory-supplied sample containers. The samples will be delivered to an ADEC-approved laboratory in accordance with standard chain-of-custody procedures.
- Additional water samples will be collected from the monitoring wells after the well has been purged, as described above, and tested in the field for chemical and physical intrinsic parameters listed in the 2021 Schedule shown above.

APPENDIX C

Field Measurements and Hydraulic Gradient Plot

**Appendix C
Field Measurements and Notes**

Project: **Tesoro 2 Go Mart #76**
Project number: **185705377**

Date: **3/23/2021**
Samplers: **JM/EF**

Temperature:

Wind:

Humidity:

Pressure:

wx source:

Well ID	Volume Purged (gallons)	Sheen/Odor	Temp. (°C)	pH	Dissolved Oxygen** (mg/L)	ORP (mV)	Specific Conductance (µs/cm °c)	Top of Casing* (feet)	Depth to GW (feet btoc)	GW Elev.* (feet)	Total Depth (feet btoc)
MW-1	1.56	N/N	6.8	6.05	1.15	181.3	1,419	94.71	21.35	73.36	24.54
MW-2	2.76	N/N	4.8	5.99	5.70	209.6	1338	95.04	21.54	73.50	27.17
MW-3	3.12	Y/Y	5.7	6.36	0.88	123.0	833	94.50	19.40	75.10	25.77
MW-4	3.54	N/N	6.2	6.07	0.61	133.2	1,040	95.00	21.18	73.82	28.40
RW19-1	N/A	N/N	11.3	6.17	NM	135.6	790	95.71	NM	NM	NM

°C - degree Celsius

µs/cm - microsiemens per centimeter

btoc - below top of casing

elev. - elevation

GW - groundwater

mg/L - milligrams per liter

NM - Not measured

ORP - oxidation reduction potential

Y - yes

N - no

TBD - to be determined

Instruments/methods used for above measurements	Model	
Static water level	Heron	H01L
Conductivity	YSI	Pro Plus
Dissolved Oxygen	YSI	Pro Solo ODO
Temperature	YSI	Pro Solo ODO
ORP	YSI	Pro Plus
pH	YSI	Pro Plus

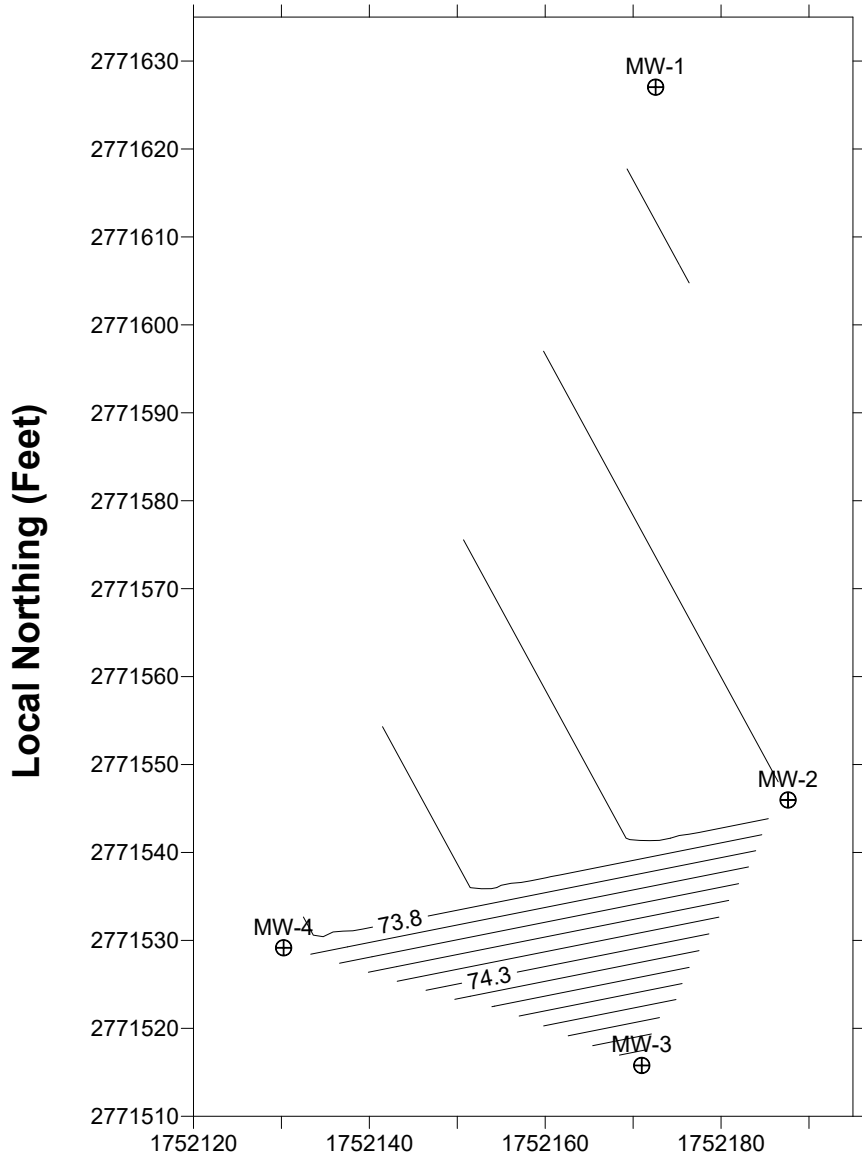
* Based on a vertical control survey of October 12, 2020.

** YSI DO calibration out of range

Notes:

Well	Observations	Well Dia.	Time	8260C	AK101	AK102	8270DSIM	Sodium
MW-1	Clear, light orange floc, springtails, ice in monumen	2"	11:50	X	X	X		X
MW-2	Light orange, heavy orange floc, springtails, ice in monument	2"	13:45	X	X	X		X
MW-3	Light gray, black floc, springtails, light sheen/odor	2"	15:19	X	X	X		X
MW-4	Clear/light orange, heavy orange floc, springtails	2"	14:45	X	X	X		X
RW19-1	Clear, 84 PSI on pressure gauge	4"	16:05	X	X	X		X
Dup01	Duplicate of MW-3		15:29	X	X	X		X

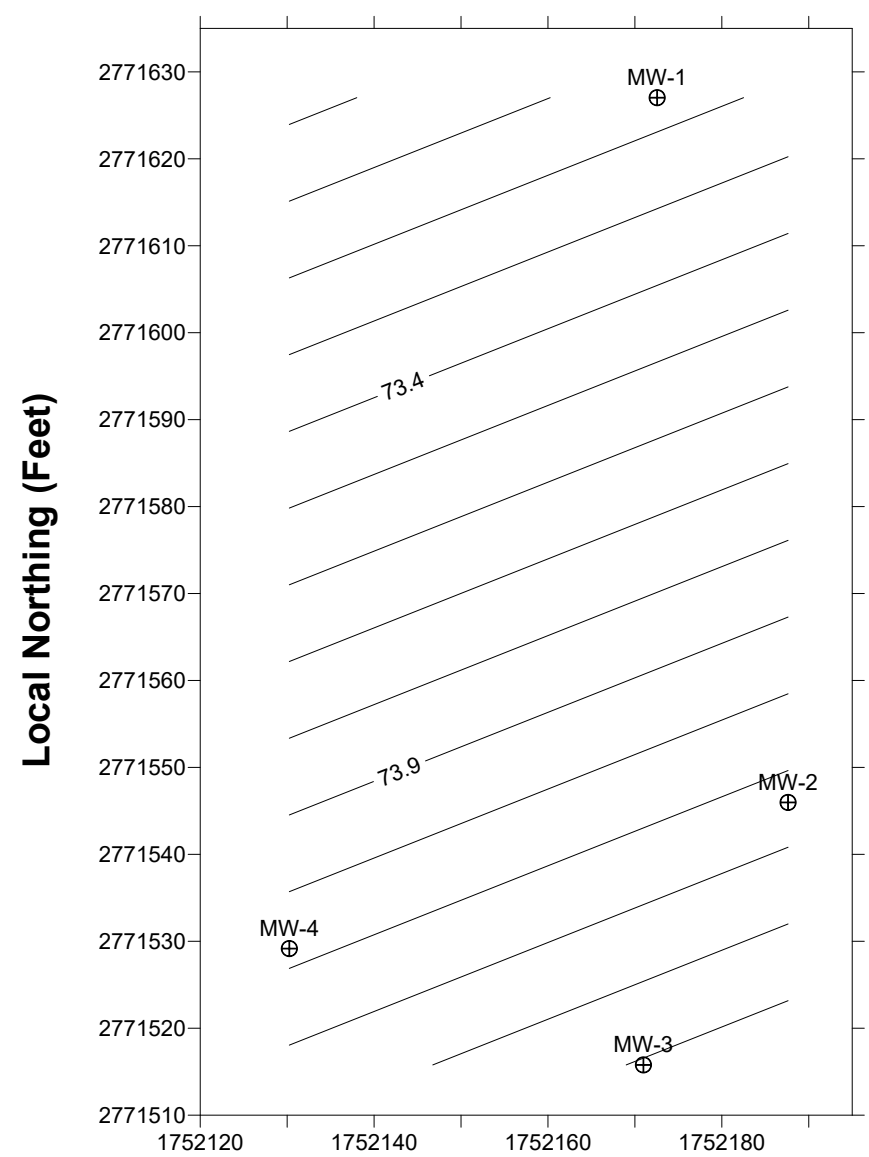
Speedway Store #5314 (Former Tesoro 2 Go Mart #76)- Groundwater Elevation Contours March 23, 2021



Local Easting (Feet)

Linear Interpolation Method
Contour Interval 0.2 feet

Elevation Datum is locally established at 100 feet.



Local Northing (Feet)

Local Easting (Feet)

Polynomial Regression Interpolation Method
Contour Interval 0.2 feet

APPENDIX D

Tables of Historical Monitoring Data

Appendix D
Tables of Historical Monitoring Data
Monitoring Well MW-1

Date	Benzene (mg/L)	Toluene (mg/L)	Ethylbenzene (mg/L)	Xylenes (mg/L)	GRO (mg/L)	DRO (mg/L)	GW Elev (feet)
06-Nov-14	0.027	U (0.0005)	U (0.0005)	U (0.0015)	0.067	0.36	76.15
25-Feb-15	0.0013	U (0.0005)	U (0.0005)	U (0.0015)	U (0.05)	U (0.41)	76.16
10-Jun-15	U (0.002)	U (0.002)	U (0.003)	U (0.002)	U (0.060)	0.50	76.59
02-Sep-15	0.0011	U (0.001)	U (0.001)	U (0.003)	U (0.1)	U (0.40)	76.36
12-Nov-15	0.029	U (0.002)	U (0.003)	U (0.002)	0.14	U (0.21)	78.14
20-Jan-16	0.071	U (0.002)	U (0.003)	U (0.002)	0.18	0.22	77.57
09-May-16	0.026	U (0.001)	U (0.001)	U (0.003)	0.1	U (0.45)	77.70
13-Oct-16	0.053	U (0.001)	U (0.001)	U (0.003)	0.84	0.36	77.53
09-Dec-16	0.027	U (0.002)	U (0.002)	U (0.003)	0.067	0.67	76.74
08-Feb-17	0.010	U (0.002)	U (0.003)	U (0.002)	0.057	0.27	76.14
24-Apr-17	0.0096	U (0.002)	U (0.003)	U (0.003)	U (0.001)	U (0.0003)	77.39
01-Sep-17	0.0068	U (0.002)	U (0.003)	U (0.002)	U (1.0)	0.250	78.61
15-Feb-18	0.012	U (0.002)	U (0.003)	U (0.003)	U (1.0)	U (0.13)	77.07
29-Jun-18	0.026	U (0.002)	U (0.003)	U (0.003)	U (0.25) H	0.30	76.34
11-Sep-18	0.01	U (0.001)	U (0.001)	U (0.002)	U (0.15)	U (0.27)	76.80
26-Oct-18	0.015	U (0.002)	U (0.003)	U (0.003)	U (0.25)	0.31	76.94
25-Feb-19	0.0037	U (0.002)	U (0.003)	U (0.003)	U (0.25)	0.19	76.59
25-Apr-19	U (0.003)	U (0.002)	U (0.003)	U (0.003)	U (0.25)	U (0.27)	77.94
25-Jul-19	0.0071	U (0.002)	U (0.003)	U (0.003)	U (0.25)	0.27	76.78
18-Oct-19	U (0.003)	U (0.002)	U (0.003)	U (0.003)	U (0.25)	0.16	75.68
11-Aug-20	0.00262	U (0.001)	U (0.001)	U (0.003)	U (0.1)	U (0.808)	73.28
12-Oct-20	0.00548	U (0.001)	U (0.001)	U (0.002)	0.0110 J	0.369 J	72.86
23-Mar-21	.000526 J	U (0.001)	U (0.001)	U (0.001)	0.013 B,J	U (0.840)	73.39
GCLs	0.0046	1.1	0.015	0.19	2.2	1.5	NA

Appendix D
Tables of Historical Monitoring Data

Monitoring Well MW-2

Date	Benzene (mg/L)	Toluene (mg/L)	Ethylbenzene (mg/L)	Xylenes (mg/L)	GRO (mg/L)	DRO (mg/L)	GW Elev (feet)
06-Nov-14	0.067	0.026	0.016	0.130	0.68	0.19	77.95
25-Feb-15	0.022	0.0045	0.0034	0.020	0.130	U (0.41)	77.03
10-Jun-15	U (0.002)	U (0.002)	U (0.003)	1.8	6.1	1.1	76.67
02-Sep-15	0.089	0.056	0.065	1.4	U (10)	1.8	76.48
12-Nov-15	0.091	0.11	0.13	0.179	22	1.8	78.61
20-Jan-16	0.520	1.5	0.83	5.1	NL	1.6	78.28
09-May-16	0.41	0.37	0.35	2.8	U (10)	0.95	78.25
13-Oct-16	0.42	0.63	0.48	2.62	9.2	0.98	78.74
09-Dec-16	0.57	0.17	0.50	1.01	11	1.7	77.07
08-Feb-17	0.053	U (0.002)	0.02	0.096	0.58	0.20	77.32
24-Apr-17	0.036	0.012	0.035	0.66	2.6	0.94	78.01
01-Sep-17	0.083	0.026	0.450	2.330	9.7	1.3	79.31
15-Feb-18	0.067	0.02	0.14	0.97	U (10)	0.98	79.08
29-Jun-18	0.17	0.25	0.59	3.3	6.0 H	1.2	78.34
11-Sep-18	0.094	0.13	0.18	1.08	4.8	0.74	78.88
26-Oct-18	0.17	0.28	0.48	3.01	11	1.0	79.40
25-Feb-19	0.092	0.22	0.18	1.41	5.4	1.2	75.96
25-Apr-19	0.051	0.13	U (0.003)	1.28	3.6	0.93	79.50
25-Jul-19	0.079	0.13	0.2	1.47	5.4	0.89	77.72
18-Oct-19	0.025	0.0065	0.022	0.101	0.74	0.24	77.05
11-Aug-20	0.0599	0.0107	0.0759	0.465	0.921	0.553	74.50
12-Oct-20	0.16	U (0.001)	0.0455	0.168	0.755	0.409	74.55
23-Mar-21	0.00542	U (0.001)	U (0.001)	U (0.003)	0.0227 B,J	U (0.840)	73.54
GCLs	0.0046	1.1	0.015	0.19	2.2	1.5	NA

Appendix D
Tables of Historical Monitoring Data

Monitoring Well MW-3

Date	Benzene (mg/L)	Toluene (mg/L)	Ethylbenzene (mg/L)	Xylenes (mg/L)	GRO (mg/L)	DRO (mg/L)	GW Elev (feet)
06-Nov-14	5.0	7.4	37	39	240	3.5	78.38
25-Feb-15	2.9	34	6.7	37	180	8.6	77.98
10-Jun-15	5.2	38	8.2	48	210	9.5	78.40
02-Sep-15	3.7	24	4.4	28	U (200)	5.1	77.88
12-Nov-15	1.3	2.1	0.21	1.69	87	3.6	78.92
20-Jan-16	3.8	13	4.2	25.3	120	4.1	78.50
09-May-16	2.1	21	2.2	33	69	1.5	78.43
13-Oct-16	1.2	4.2	2.9	14.6	46	2	78.75
09-Dec-16	0.17 (E)	NL	NL	0.54 (E)	100	3.3	77.80
08-Feb-17	39	99	53	103	98	3.9	77.61
24-Apr-17	2.5	14	5.2	28.9	U (200)	6.7	78.61
01-Sep-17	0.610	9.300	3.700	21.400	75	1.9	79.33
15-Feb-18	0.3	3.8	2.9	15.6	U (100)	1.3	79.03
29-Jun-18	0.28	1.1	1.7	8.2 H	23 H	1.1	78.78
11-Sep-18	0.29	0.53	1	5.6	14	0.91	79.13
26-Oct-18	0.32	0.36	0.89	4.3	15	0.93	79.40
25-Feb-19	0.95	0.69	2.3	11.4	U (1.3)	4.6	78.15
25-Apr-19	0.14	0.13	U (1.5)	U (1.5)	11	0.64	79.58
25-Jul-19	0.68	1.2	2.4	11.6	41	1.9	78.38
18-Oct-19	0.21	0.66	1.7	9.7	21	1.2	77.04
11-Aug-20	0.737	1.05	2.99	17	32.8	4.89	75.60
12-Oct-20	0.32	0.868	2.46	14.89	29.4	5.22	76.18
23-Mar-21	0.45	1.21	3.73	21.6	54.3	U (0.840)	75.12
GCLs	0.0046	1.1	0.015	0.19	2.2	1.5	NA

Appendix D
Tables of Historical Monitoring Data

Monitoring Well MW-4

Date	Benzene (mg/L)	Toluene (mg/L)	Ethylbenzene (mg/L)	Xylenes (mg/L)	GRO (mg/L)	DRO (mg/L)	GW Elev (feet)
06-Nov-14	0.940	1.9	0.3	1.5	13	0.45	77.81
25-Feb-15	3.7	6.6	0.56	2.7	29	1.0	76.85
10-Jun-15	1.1	2.3	0.54	2.7	14	1.0	76.60
02-Sep-15	0.026	U (0.001)	0.007	0.03	0.3	U (0.40)	77.31
12-Nov-15	NL	NL	NL	NL	U (0.050)	U (0.21)	78.99
20-Jan-16	0.0043	U (0.002)	U (0.003)	U (0.002)	NL	0.15	78.56
09-May-16	0.0092	U (0.001)	U (0.001)	U (0.003)	U (0.1)	U (0.42)	78.51
13-Oct-16	U (0.00020)	U (0.001)	U (0.001)	U (0.003)	U (0.1)	0.18	78.84
09-Dec-16	NL	NL	NL	NL	U (0.05)	0.18	77.93
08-Feb-17	0.017	U (0.002)	U (0.003)	U (0.002)	U (0.05)	0.18	78.81
24-Apr-17	0.012	U (0.002)	0.0049	U (0.003)	U (0.001)	U (0.0003)	78.8
01-Sep-17	0.550	U (0.050)	0.380	0.740	5.1	0.48	79.38
15-Feb-18	0.19	U (0.10)	0.26	0.438	3.3	0.29	79.14
29-Jun-18	0.09	U (0.002)	0.022	0.027	0.52	0.19	79.00
11-Sep-18	0.0086	U (0.001)	0.0052	0.0062	U (0.15)	U (0.28)	79.23
26-Oct-18	0.013	U (0.002)	0.0045	0.0089	U (0.25)	0.15	79.46
25-Feb-19	0.026	U (0.002)	0.0034	0.0089	U (0.25)	0.20	78.30
25-Apr-19	U (0.003)	U (0.002)	U (0.003)	U (0.003)	U (0.25)	U (0.27)	77.23
25-Jul-19	0.051	U (0.002)	U (0.003)	0.0078	U (0.25)	0.16	78.33
18-Oct-19	0.020	0.015	0.0059	0.0277	U (0.25)	U (0.12)	77.03
11-Aug-20	0.054	U (0.001)	0.000455	0.00933	0.084	U (0.800)	75.75
12-Oct-20	0.129	U (0.001)	0.00699	0.0264	0.313	U (0.800)	76.04
23-Mar-21	0.079	U (0.001)	0.0178	0.0345	0.274 B	0.266 J	73.84
GCLs	0.0046	1.1	0.015	0.19	2.2	1.5	NA

Monitoring Well RW19-1

Date	Benzene (mg/L)	Toluene (mg/L)	Ethylbenzene (mg/L)	Xylenes (mg/L)	GRO (mg/L)	DRO (mg/L)	GW Elev (feet)
11-Aug-20	0.001	U (0.001)	U (0.001)	0.000489	U (0.100)	U (0.848)	TBD
12-Oct-20	0.000609 J	U (0.001)	U (0.001)	U (0.002)	U (0.100)	U (0.800)	70.85
23-Mar-21	U (0.001)	U (0.001)	U (0.001)	U (0.003)	0.0119 B,J	U (0.840)	TBD
GCLs	0.0046	1.1	0.015	0.19	2.2	1.5	NA

TBD - to be determined

NA - Not applicable

B - The same analyte is found in the associated blank.

J - The identification of the analyte is acceptable; the reported value is an estimate.

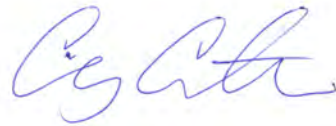
APPENDIX E

Laboratory Analytical Report and ADEC Laboratory Data Review Checklist

Stantec - Anchorage, AK - Speedway

Sample Delivery Group: L1331409
Samples Received: 03/26/2021
Project Number:
Description: Speedway 5314
Site: 0005314
Report To: Mr. John Marshall
725 E Fireweed Lane
Suite 200
Anchorage, AK 99503

Entire Report Reviewed By:

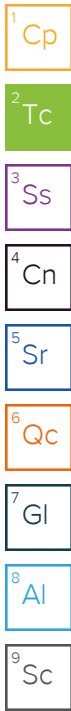


Craig Cothron
Project Manager

Results relate only to the items tested or calibrated and are reported as rounded values. This test report shall not be reproduced, except in full, without written approval of the laboratory. Where applicable, sampling conducted by Pace Analytical National is performed per guidance provided in laboratory standard operating procedures ENV-SOP-MTJL-0067 and ENV-SOP-MTJL-0068. Where sampling conducted by the customer, results relate to the accuracy of the information provided, and as the samples are received.

TABLE OF CONTENTS

Cp: Cover Page	1
Tc: Table of Contents	2
Ss: Sample Summary	3
Cn: Case Narrative	5
Sr: Sample Results	6
MW-01 L1331409-01	6
MW-02 L1331409-02	7
MW-03 L1331409-03	8
MW-04 L1331409-04	9
RW19-01 L1331409-05	10
DUP1 L1331409-06	11
TRIP BLANK L1331409-07	12
Qc: Quality Control Summary	13
Metals (ICP) by Method 6010C	13
Volatile Organic Compounds (GC) by Method AK101	14
Volatile Organic Compounds (GC/MS) by Method 8260C	15
Semi-Volatile Organic Compounds (GC) by Method AK102	17
Gl: Glossary of Terms	18
Al: Accreditations & Locations	19
Sc: Sample Chain of Custody	20

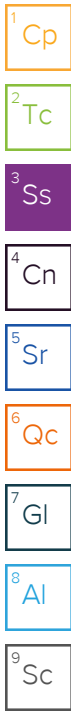


SAMPLE SUMMARY

MW-01 L1331409-01 GW

Collected by Eli Fredrickson Collected date/time 03/23/21 11:50 Received date/time 03/26/21 09:00

Method	Batch	Dilution	Preparation date/time	Analysis date/time	Analyst	Location
Metals (ICP) by Method 6010C	WG1643822	1	04/02/21 08:19	04/02/21 11:31	CCE	Mt. Juliet, TN
Volatile Organic Compounds (GC) by Method AK101	WG1644325	1	04/02/21 04:27	04/02/21 04:27	JAH	Mt. Juliet, TN
Volatile Organic Compounds (GC/MS) by Method 8260C	WG1642904	1	03/30/21 19:04	03/30/21 19:04	JHH	Mt. Juliet, TN
Semi-Volatile Organic Compounds (GC) by Method AK102	WG1641868	1.05	03/30/21 07:55	03/31/21 18:51	JDG	Mt. Juliet, TN



MW-02 L1331409-02 GW

Collected by Eli Fredrickson Collected date/time 03/23/21 13:45 Received date/time 03/26/21 09:00

Method	Batch	Dilution	Preparation date/time	Analysis date/time	Analyst	Location
Metals (ICP) by Method 6010C	WG1643822	1	04/02/21 08:19	04/02/21 11:39	CCE	Mt. Juliet, TN
Volatile Organic Compounds (GC) by Method AK101	WG1644325	1	04/02/21 04:49	04/02/21 04:49	JAH	Mt. Juliet, TN
Volatile Organic Compounds (GC/MS) by Method 8260C	WG1642904	1	03/30/21 19:23	03/30/21 19:23	JHH	Mt. Juliet, TN
Semi-Volatile Organic Compounds (GC) by Method AK102	WG1641868	1.05	03/30/21 07:55	03/31/21 19:11	JDG	Mt. Juliet, TN

MW-03 L1331409-03 GW

Collected by Eli Fredrickson Collected date/time 03/23/21 15:19 Received date/time 03/26/21 09:00

Method	Batch	Dilution	Preparation date/time	Analysis date/time	Analyst	Location
Metals (ICP) by Method 6010C	WG1643822	1	04/02/21 08:19	04/02/21 11:46	CCE	Mt. Juliet, TN
Volatile Organic Compounds (GC) by Method AK101	WG1644325	50	04/02/21 06:37	04/02/21 06:37	JAH	Mt. Juliet, TN
Volatile Organic Compounds (GC/MS) by Method 8260C	WG1642904	200	03/30/21 20:21	03/30/21 20:21	JHH	Mt. Juliet, TN
Semi-Volatile Organic Compounds (GC) by Method AK102	WG1641868	1.05	03/30/21 07:55	03/31/21 19:31	JDG	Mt. Juliet, TN

MW-04 L1331409-04 GW

Collected by Eli Fredrickson Collected date/time 03/23/21 14:45 Received date/time 03/26/21 09:00

Method	Batch	Dilution	Preparation date/time	Analysis date/time	Analyst	Location
Metals (ICP) by Method 6010C	WG1643822	1	04/02/21 08:19	04/02/21 12:07	CCE	Mt. Juliet, TN
Volatile Organic Compounds (GC) by Method AK101	WG1644325	1	04/02/21 05:11	04/02/21 05:11	JAH	Mt. Juliet, TN
Volatile Organic Compounds (GC/MS) by Method 8260C	WG1642904	1	03/30/21 19:43	03/30/21 19:43	JHH	Mt. Juliet, TN
Semi-Volatile Organic Compounds (GC) by Method AK102	WG1641868	1.05	03/30/21 07:55	03/31/21 19:51	JDG	Mt. Juliet, TN

RW19-01 L1331409-05 GW

Collected by Eli Fredrickson Collected date/time 03/23/21 16:05 Received date/time 03/26/21 09:00

Method	Batch	Dilution	Preparation date/time	Analysis date/time	Analyst	Location
Metals (ICP) by Method 6010C	WG1643822	1	04/02/21 08:19	04/02/21 12:10	CCE	Mt. Juliet, TN
Volatile Organic Compounds (GC) by Method AK101	WG1644325	1	04/02/21 05:33	04/02/21 05:33	JAH	Mt. Juliet, TN
Volatile Organic Compounds (GC/MS) by Method 8260C	WG1642904	1	03/30/21 20:02	03/30/21 20:02	JHH	Mt. Juliet, TN
Semi-Volatile Organic Compounds (GC) by Method AK102	WG1641868	1.05	03/30/21 07:55	03/31/21 20:12	JDG	Mt. Juliet, TN

DUP1 L1331409-06 GW

Collected by Eli Fredrickson Collected date/time 03/23/21 00:00 Received date/time 03/26/21 09:00

Method	Batch	Dilution	Preparation date/time	Analysis date/time	Analyst	Location
Metals (ICP) by Method 6010C	WG1643822	1	04/02/21 08:19	04/02/21 12:13	CCE	Mt. Juliet, TN
Volatile Organic Compounds (GC) by Method AK101	WG1644325	20	04/02/21 05:55	04/02/21 05:55	JAH	Mt. Juliet, TN
Volatile Organic Compounds (GC/MS) by Method 8260C	WG1642904	20	03/30/21 20:40	03/30/21 20:40	JHH	Mt. Juliet, TN
Volatile Organic Compounds (GC/MS) by Method 8260C	WG1646063	200	04/06/21 03:03	04/06/21 03:03	ADM	Mt. Juliet, TN
Semi-Volatile Organic Compounds (GC) by Method AK102	WG1641868	1.05	03/30/21 07:55	03/31/21 20:32	JDG	Mt. Juliet, TN

SAMPLE SUMMARY

TRIP BLANK L1331409-07 GW

Collected by: Eli Fredrickson
Collected date/time: 03/23/21 12:00
Received date/time: 03/26/21 09:00

Method	Batch	Dilution	Preparation date/time	Analysis date/time	Analyst	Location
Volatile Organic Compounds (GC/MS) by Method 8260C	WG1642904	1	03/30/21 16:51	03/30/21 16:51	JHH	Mt. Juliet, TN

¹ Cp

² Tc

³ Ss

⁴ Cn

⁵ Sr

⁶ Qc

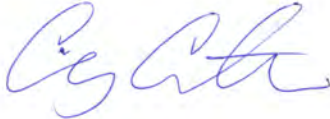
⁷ Gl

⁸ Al

⁹ Sc

CASE NARRATIVE

All sample aliquots were received at the correct temperature, in the proper containers, with the appropriate preservatives, and within method specified holding times, unless qualified or notated within the report. Where applicable, all MDL (LOD) and RDL (LOQ) values reported for environmental samples have been corrected for the dilution factor used in the analysis. All Method and Batch Quality Control are within established criteria except where addressed in this case narrative, a non-conformance form or properly qualified within the sample results. By my digital signature below, I affirm to the best of my knowledge, all problems/anomalies observed by the laboratory as having the potential to affect the quality of the data have been identified by the laboratory, and no information or data have been knowingly withheld that would affect the quality of the data.



Craig Cothron
Project Manager

¹ Cp

² Tc

³ Ss

⁴ Cn

⁵ Sr

⁶ Qc

⁷ Gl

⁸ Al

⁹ Sc

Metals (ICP) by Method 6010C

Analyte	Result	Qualifier	MDL	RDL	Dilution	Analysis date / time	Batch
Sodium	33.2		0.504	3.00	1	04/02/2021 11:31	WG1643822

Volatile Organic Compounds (GC) by Method AK101

Analyte	Result	Qualifier	MDL	RDL	Dilution	Analysis date / time	Batch
TPHGAK C6 to C10	0.0130	<u>B</u> <u>J</u>	0.0100	0.100	1	04/02/2021 04:27	WG1644325
(S) a,a,a-Trifluorotoluene(FID)	91.9			50.0-150		04/02/2021 04:27	WG1644325
(S) a,a,a-Trifluorotoluene(PID)	101			79.0-125		04/02/2021 04:27	WG1644325

Volatile Organic Compounds (GC/MS) by Method 8260C

Analyte	Result	Qualifier	MDL	RDL	Dilution	Analysis date / time	Batch
Benzene	0.000526	<u>J</u>	0.0000941	0.00100	1	03/30/2021 19:04	WG1642904
Toluene	U		0.000278	0.00100	1	03/30/2021 19:04	WG1642904
Ethylbenzene	U		0.000137	0.00100	1	03/30/2021 19:04	WG1642904
Total Xylenes	U		0.000174	0.00300	1	03/30/2021 19:04	WG1642904
(S) Toluene-d8	102			80.0-120		03/30/2021 19:04	WG1642904
(S) 4-Bromofluorobenzene	105			77.0-126		03/30/2021 19:04	WG1642904
(S) 1,2-Dichloroethane-d4	104			70.0-130		03/30/2021 19:04	WG1642904

Semi-Volatile Organic Compounds (GC) by Method AK102

Analyte	Result	Qualifier	MDL	RDL	Dilution	Analysis date / time	Batch
AK102 DRO C10-C25	U		0.240	0.840	1.05	03/31/2021 18:51	WG1641868
(S) o-Terphenyl	89.1			50.0-150		03/31/2021 18:51	WG1641868

Sample Narrative:

L1331409-01 WG1641868: Dilution due to sample volume.

1 Cp

2 Tc

3 Ss

4 Cn

5 Sr

6 Qc

7 Gl

8 Al

9 Sc

Metals (ICP) by Method 6010C

Analyte	Result	Qualifier	MDL	RDL	Dilution	Analysis	Batch
	mg/l		mg/l	mg/l		date / time	
Sodium	48.1		0.504	3.00	1	04/02/2021 11:39	WG1643822

1 Cp

2 Tc

Volatile Organic Compounds (GC) by Method AK101

Analyte	Result	Qualifier	MDL	RDL	Dilution	Analysis	Batch
	mg/l		mg/l	mg/l		date / time	
TPHGAK C6 to C10	0.0227	B J	0.0100	0.100	1	04/02/2021 04:49	WG1644325
(S) a,a,a-Trifluorotoluene(FID)	91.9			50.0-150		04/02/2021 04:49	WG1644325
(S) a,a,a-Trifluorotoluene(PID)	101			79.0-125		04/02/2021 04:49	WG1644325

3 Ss

4 Cn

5 Sr

Volatile Organic Compounds (GC/MS) by Method 8260C

Analyte	Result	Qualifier	MDL	RDL	Dilution	Analysis	Batch
	mg/l		mg/l	mg/l		date / time	
Benzene	0.00542		0.0000941	0.00100	1	03/30/2021 19:23	WG1642904
Toluene	U		0.000278	0.00100	1	03/30/2021 19:23	WG1642904
Ethylbenzene	U		0.000137	0.00100	1	03/30/2021 19:23	WG1642904
Total Xylenes	U		0.000174	0.00300	1	03/30/2021 19:23	WG1642904
(S) Toluene-d8	102			80.0-120		03/30/2021 19:23	WG1642904
(S) 4-Bromofluorobenzene	106			77.0-126		03/30/2021 19:23	WG1642904
(S) 1,2-Dichloroethane-d4	106			70.0-130		03/30/2021 19:23	WG1642904

6 Qc

7 Gl

8 Al

9 Sc

Semi-Volatile Organic Compounds (GC) by Method AK102

Analyte	Result	Qualifier	MDL	RDL	Dilution	Analysis	Batch
	mg/l		mg/l	mg/l		date / time	
AK102 DRO C10-C25	U		0.240	0.840	1.05	03/31/2021 19:11	WG1641868
(S) o-Terphenyl	90.7			50.0-150		03/31/2021 19:11	WG1641868

Sample Narrative:

L1331409-02 WG1641868: Dilution due to sample volume.

Metals (ICP) by Method 6010C

Analyte	Result	Qualifier	MDL	RDL	Dilution	Analysis	Batch
	mg/l		mg/l	mg/l		date / time	
Sodium	U		0.504	3.00	1	04/02/2021 11:46	WG1643822

1 Cp

2 Tc

Volatile Organic Compounds (GC) by Method AK101

Analyte	Result	Qualifier	MDL	RDL	Dilution	Analysis	Batch
	mg/l		mg/l	mg/l		date / time	
TPHGAK C6 to C10	54.3		0.500	5.00	50	04/02/2021 06:37	WG1644325
(S) a,a,a-Trifluorotoluene(FID)	92.5			50.0-150		04/02/2021 06:37	WG1644325
(S) a,a,a-Trifluorotoluene(PID)	101			79.0-125		04/02/2021 06:37	WG1644325

3 Ss

4 Cn

5 Sr

Volatile Organic Compounds (GC/MS) by Method 8260C

Analyte	Result	Qualifier	MDL	RDL	Dilution	Analysis	Batch
	mg/l		mg/l	mg/l		date / time	
Benzene	0.450		0.0188	0.200	200	03/30/2021 20:21	WG1642904
Toluene	1.21		0.0556	0.200	200	03/30/2021 20:21	WG1642904
Ethylbenzene	3.73		0.0274	0.200	200	03/30/2021 20:21	WG1642904
Total Xylenes	21.6		0.0348	0.600	200	03/30/2021 20:21	WG1642904
(S) Toluene-d8	103			80.0-120		03/30/2021 20:21	WG1642904
(S) 4-Bromofluorobenzene	104			77.0-126		03/30/2021 20:21	WG1642904
(S) 1,2-Dichloroethane-d4	103			70.0-130		03/30/2021 20:21	WG1642904

6 Qc

7 Gl

8 Al

9 Sc

Semi-Volatile Organic Compounds (GC) by Method AK102

Analyte	Result	Qualifier	MDL	RDL	Dilution	Analysis	Batch
	mg/l		mg/l	mg/l		date / time	
AK102 DRO C10-C25	U		0.240	0.840	1.05	03/31/2021 19:31	WG1641868
(S) o-Terphenyl	68.9			50.0-150		03/31/2021 19:31	WG1641868

Sample Narrative:

L1331409-03 WG1641868: Dilution due to sample volume.

Metals (ICP) by Method 6010C

Analyte	Result	Qualifier	MDL	RDL	Dilution	Analysis date / time	Batch
Sodium	47.1		0.504	3.00	1	04/02/2021 12:07	WG1643822

1 Cp
2 Tc
3 Ss
4 Cn

Volatile Organic Compounds (GC) by Method AK101

Analyte	Result	Qualifier	MDL	RDL	Dilution	Analysis date / time	Batch
TPHGAK C6 to C10	0.274	<u>B</u>	0.0100	0.100	1	04/02/2021 05:11	WG1644325
(S) a,a,a-Trifluorotoluene(FID)	92.4			50.0-150		04/02/2021 05:11	WG1644325
(S) a,a,a-Trifluorotoluene(PID)	102			79.0-125		04/02/2021 05:11	WG1644325

5 Sr
6 Qc

Volatile Organic Compounds (GC/MS) by Method 8260C

Analyte	Result	Qualifier	MDL	RDL	Dilution	Analysis date / time	Batch
Benzene	0.0790		0.0000941	0.00100	1	03/30/2021 19:43	WG1642904
Toluene	U		0.000278	0.00100	1	03/30/2021 19:43	WG1642904
Ethylbenzene	0.0178		0.000137	0.00100	1	03/30/2021 19:43	WG1642904
Total Xylenes	0.0345		0.000174	0.00300	1	03/30/2021 19:43	WG1642904
(S) Toluene-d8	102			80.0-120		03/30/2021 19:43	WG1642904
(S) 4-Bromofluorobenzene	105			77.0-126		03/30/2021 19:43	WG1642904
(S) 1,2-Dichloroethane-d4	103			70.0-130		03/30/2021 19:43	WG1642904

7 Gl
8 Al
9 Sc

Semi-Volatile Organic Compounds (GC) by Method AK102

Analyte	Result	Qualifier	MDL	RDL	Dilution	Analysis date / time	Batch
AK102 DRO C10-C25	0.266	<u>J</u>	0.240	0.840	1.05	03/31/2021 19:51	WG1641868
(S) o-Terphenyl	91.4			50.0-150		03/31/2021 19:51	WG1641868

Sample Narrative:

L1331409-04 WG1641868: Dilution due to sample volume.

Metals (ICP) by Method 6010C

Analyte	Result	Qualifier	MDL	RDL	Dilution	Analysis	Batch
Sodium	25.9		0.504	3.00	1	04/02/2021 12:10	WG1643822

Volatile Organic Compounds (GC) by Method AK101

Analyte	Result	Qualifier	MDL	RDL	Dilution	Analysis	Batch
TPHGAK C6 to C10	0.0119	<u>B J</u>	0.0100	0.100	1	04/02/2021 05:33	WG1644325
(S) a,a,a-Trifluorotoluene(FID)	91.8			50.0-150		04/02/2021 05:33	WG1644325
(S) a,a,a-Trifluorotoluene(PID)	102			79.0-125		04/02/2021 05:33	WG1644325

Volatile Organic Compounds (GC/MS) by Method 8260C

Analyte	Result	Qualifier	MDL	RDL	Dilution	Analysis	Batch
Benzene	U		0.0000941	0.00100	1	03/30/2021 20:02	WG1642904
Toluene	U		0.000278	0.00100	1	03/30/2021 20:02	WG1642904
Ethylbenzene	U		0.000137	0.00100	1	03/30/2021 20:02	WG1642904
Total Xylenes	U		0.000174	0.00300	1	03/30/2021 20:02	WG1642904
(S) Toluene-d8	102			80.0-120		03/30/2021 20:02	WG1642904
(S) 4-Bromofluorobenzene	105			77.0-126		03/30/2021 20:02	WG1642904
(S) 1,2-Dichloroethane-d4	108			70.0-130		03/30/2021 20:02	WG1642904

Semi-Volatile Organic Compounds (GC) by Method AK102

Analyte	Result	Qualifier	MDL	RDL	Dilution	Analysis	Batch
AK102 DRO C10-C25	U		0.240	0.840	1.05	03/31/2021 20:12	WG1641868
(S) o-Terphenyl	73.2			50.0-150		03/31/2021 20:12	WG1641868

Sample Narrative:

L1331409-05 WG1641868: Dilution due to sample volume.

1 Cp

2 Tc

3 Ss

4 Cn

5 Sr

6 Qc

7 Gl

8 Al

9 Sc

Metals (ICP) by Method 6010C

Analyte	Result	Qualifier	MDL	RDL	Dilution	Analysis	Batch
Sodium	40.2		0.504	3.00	1	04/02/2021 12:13	WG1643822

- 1 Cp
- 2 Tc
- 3 Ss
- 4 Cn
- 5 Sr
- 6 Qc

Volatile Organic Compounds (GC) by Method AK101

Analyte	Result	Qualifier	MDL	RDL	Dilution	Analysis	Batch
TPHGAK C6 to C10	49.1		0.200	2.00	20	04/02/2021 05:55	WG1644325
(S) a,a,a-Trifluorotoluene(FID)	91.9			50.0-150		04/02/2021 05:55	WG1644325
(S) a,a,a-Trifluorotoluene(PID)	103			79.0-125		04/02/2021 05:55	WG1644325

- 7 Gl
- 8 Al
- 9 Sc

Volatile Organic Compounds (GC/MS) by Method 8260C

Analyte	Result	Qualifier	MDL	RDL	Dilution	Analysis	Batch
Benzene	0.473		0.00188	0.0200	20	03/30/2021 20:40	WG1642904
Toluene	1.25		0.00556	0.0200	20	03/30/2021 20:40	WG1642904
Ethylbenzene	2.91		0.0274	0.200	200	04/06/2021 03:03	WG1646063
Total Xylenes	17.1		0.0348	0.600	200	04/06/2021 03:03	WG1646063
(S) Toluene-d8	107			80.0-120		03/30/2021 20:40	WG1642904
(S) Toluene-d8	110			80.0-120		04/06/2021 03:03	WG1646063
(S) 4-Bromofluorobenzene	106			77.0-126		03/30/2021 20:40	WG1642904
(S) 4-Bromofluorobenzene	96.4			77.0-126		04/06/2021 03:03	WG1646063
(S) 1,2-Dichloroethane-d4	107			70.0-130		03/30/2021 20:40	WG1642904
(S) 1,2-Dichloroethane-d4	103			70.0-130		04/06/2021 03:03	WG1646063

Semi-Volatile Organic Compounds (GC) by Method AK102

Analyte	Result	Qualifier	MDL	RDL	Dilution	Analysis	Batch
AK102 DRO C10-C25	4.56		0.240	0.840	1.05	03/31/2021 20:32	WG1641868
(S) o-Terphenyl	90.7			50.0-150		03/31/2021 20:32	WG1641868

Volatile Organic Compounds (GC/MS) by Method 8260C

Analyte	Result	Qualifier	MDL	RDL	Dilution	Analysis	Batch
	mg/l		mg/l	mg/l		date / time	
Benzene	U		0.0000941	0.00100	1	03/30/2021 16:51	WG1642904
Toluene	U		0.000278	0.00100	1	03/30/2021 16:51	WG1642904
Ethylbenzene	U		0.000137	0.00100	1	03/30/2021 16:51	WG1642904
Total Xylenes	U		0.000174	0.00300	1	03/30/2021 16:51	WG1642904
<i>(S) Toluene-d8</i>	101			80.0-120		03/30/2021 16:51	WG1642904
<i>(S) 4-Bromofluorobenzene</i>	105			77.0-126		03/30/2021 16:51	WG1642904
<i>(S) 1,2-Dichloroethane-d4</i>	106			70.0-130		03/30/2021 16:51	WG1642904

- 1 Cp
- 2 Tc
- 3 Ss
- 4 Cn
- 5 Sr
- 6 Qc
- 7 Gl
- 8 Al
- 9 Sc

Method Blank (MB)

(MB) R3637500-1 04/02/21 10:35

Analyte	MB Result mg/l	MB Qualifier	MB MDL mg/l	MB RDL mg/l
Sodium	U		0.504	3.00

¹Cp

²Tc

³Ss

Laboratory Control Sample (LCS)

(LCS) R3637500-2 04/02/21 10:37

Analyte	Spike Amount mg/l	LCS Result mg/l	LCS Rec. %	Rec. Limits %	LCS Qualifier
Sodium	10.0	9.31	93.1	80.0-120	

⁴Cn

⁵Sr

L1330956-01 Original Sample (OS) • Matrix Spike (MS) • Matrix Spike Duplicate (MSD)

(OS) L1330956-01 04/02/21 10:40 • (MS) R3637500-4 04/02/21 10:45 • (MSD) R3637500-6 04/02/21 13:01

Analyte	Spike Amount mg/l	Original Result mg/l	MS Result mg/l	MSD Result mg/l	MS Rec. %	MSD Rec. %	Dilution	Rec. Limits %	MS Qualifier	MSD Qualifier	RPD %	RPD Limits %
Sodium	10.0	3.22	12.5	12.5	93.0	92.7	1	75.0-125			0.273	20

⁶Qc

⁷Gl

⁸Al

⁹Sc

Method Blank (MB)

(MB) R3637625-2 04/01/21 23:40

Analyte	MB Result mg/l	MB Qualifier	MB MDL mg/l	MB RDL mg/l
TPHGAK C6 to C10	0.0342	<u>J</u>	0.0100	0.100
(S) a,a,a-Trifluorotoluene(PID)	102			79.0-125
(S) a,a,a-Trifluorotoluene(FID)	91.7			60.0-120

Laboratory Control Sample (LCS)

(LCS) R3637625-1 04/01/21 22:30

Analyte	Spike Amount mg/l	LCS Result mg/l	LCS Rec. %	Rec. Limits %	LCS Qualifier
TPHGAK C6 to C10	5.00	4.67	93.4	60.0-120	
(S) a,a,a-Trifluorotoluene(PID)			129	79.0-125	<u>J1</u>
(S) a,a,a-Trifluorotoluene(FID)			107	60.0-120	

- 1 Cp
- 2 Tc
- 3 Ss
- 4 Cn
- 5 Sr
- 6 Qc
- 7 Gl
- 8 Al
- 9 Sc

Method Blank (MB)

(MB) R3638296-3 03/30/21 09:58

Analyte	MB Result	MB Qualifier	MB MDL	MB RDL
	mg/l		mg/l	mg/l
Benzene	U		0.0000941	0.00100
Ethylbenzene	U		0.000137	0.00100
Toluene	U		0.000278	0.00100
Xylenes, Total	U		0.000174	0.00300
<i>(S) Toluene-d8</i>	103			80.0-120
<i>(S) 4-Bromofluorobenzene</i>	105			77.0-126
<i>(S) 1,2-Dichloroethane-d4</i>	105			70.0-130

Laboratory Control Sample (LCS) • Laboratory Control Sample Duplicate (LCSD)

(LCS) R3638296-1 03/30/21 09:01 • (LCSD) R3638296-2 03/30/21 09:20

Analyte	Spike Amount	LCS Result	LCSD Result	LCS Rec.	LCSD Rec.	Rec. Limits	LCS Qualifier	LCSD Qualifier	RPD	RPD Limits
	mg/l	mg/l	mg/l	%	%	%			%	%
Benzene	0.00500	0.00547	0.00560	109	112	70.0-123			2.35	20
Ethylbenzene	0.00500	0.00570	0.00587	114	117	79.0-123			2.94	20
Toluene	0.00500	0.00551	0.00562	110	112	79.0-120			1.98	20
Xylenes, Total	0.0150	0.0167	0.0177	111	118	79.0-123			5.81	20
<i>(S) Toluene-d8</i>				102	102	80.0-120				
<i>(S) 4-Bromofluorobenzene</i>				104	104	77.0-126				
<i>(S) 1,2-Dichloroethane-d4</i>				105	106	70.0-130				

1 Cp

2 Tc

3 Ss

4 Cn

5 Sr

6 Qc

7 Gl

8 Al

9 Sc

Method Blank (MB)

(MB) R3638443-2 04/05/21 20:09

Analyte	MB Result	MB Qualifier	MB MDL	MB RDL
	mg/l		mg/l	mg/l
Ethylbenzene	U		0.000137	0.00100
Xylenes, Total	U		0.000174	0.00300
(S) Toluene-d8	126	J1		80.0-120
(S) 4-Bromofluorobenzene	95.8			77.0-126
(S) 1,2-Dichloroethane-d4	96.1			70.0-130

Laboratory Control Sample (LCS)

(LCS) R3638443-1 04/05/21 19:28

Analyte	Spike Amount	LCS Result	LCS Rec.	Rec. Limits	LCS Qualifier
	mg/l	mg/l	%	%	
Ethylbenzene	0.00500	0.00517	103	79.0-123	
Xylenes, Total	0.0150	0.0141	94.0	79.0-123	
(S) Toluene-d8			112	80.0-120	
(S) 4-Bromofluorobenzene			87.1	77.0-126	
(S) 1,2-Dichloroethane-d4			97.6	70.0-130	

- 1 Cp
- 2 Tc
- 3 Ss
- 4 Cn
- 5 Sr
- 6 Qc
- 7 Gl
- 8 Al
- 9 Sc

Method Blank (MB)

(MB) R3637647-1 03/31/21 10:55

Analyte	MB Result	MB Qualifier	MB MDL	MB RDL
	mg/l		mg/l	mg/l
AK102 DRO C10-C25	U		0.229	0.800
(S) o-Terphenyl	93.5			60.0-120

Laboratory Control Sample (LCS) • Laboratory Control Sample Duplicate (LCSD)

(LCS) R3637647-2 03/31/21 11:15 • (LCSD) R3637647-3 03/31/21 11:35

Analyte	Spike Amount	LCS Result	LCSD Result	LCS Rec.	LCSD Rec.	Rec. Limits	LCS Qualifier	LCSD Qualifier	RPD	RPD Limits
	mg/l	mg/l	mg/l	%	%	%			%	%
AK102 DRO C10-C25	3.00	2.52	2.51	84.0	83.7	75.0-125			0.398	20
(S) o-Terphenyl				113	116	60.0-120				

L1330407-01 Original Sample (OS) • Matrix Spike (MS) • Matrix Spike Duplicate (MSD)

(OS) L1330407-01 03/31/21 12:36 • (MS) R3637647-6 03/31/21 12:56 • (MSD) R3637647-8 03/31/21 13:37

Analyte	Spike Amount	Original Result	MS Result	MSD Result	MS Rec.	MSD Rec.	Dilution	Rec. Limits	MS Qualifier	MSD Qualifier	RPD	RPD Limits
	mg/l	mg/l	mg/l	mg/l	%	%		%			%	%
AK102 DRO C10-C25	3.00	0.369	2.77	2.95	80.0	81.7	1	75.0-125			6.29	20
(S) o-Terphenyl					94.8	100		50.0-150				

Sample Narrative:

OS: Dilution due to sample volume.

L1330839-02 Original Sample (OS) • Matrix Spike (MS) • Matrix Spike Duplicate (MSD)

(OS) L1330839-02 03/31/21 17:27 • (MS) R3637647-7 03/31/21 13:17 • (MSD) R3637647-9 03/31/21 13:57

Analyte	Spike Amount	Original Result	MS Result	MSD Result	MS Rec.	MSD Rec.	Dilution	Rec. Limits	MS Qualifier	MSD Qualifier	RPD	RPD Limits
	mg/l	mg/l	mg/l	mg/l	%	%		%			%	%
AK102 DRO C10-C25	3.16	2.19	4.83	5.41	83.5	102	1.05	75.0-125			11.3	20
(S) o-Terphenyl					105	116		50.0-150				

1 Cp

2 Tc

3 Ss

4 Cn

5 Sr

6 Qc

7 Gl

8 Al

9 Sc

GLOSSARY OF TERMS

Guide to Reading and Understanding Your Laboratory Report

The information below is designed to better explain the various terms used in your report of analytical results from the Laboratory. This is not intended as a comprehensive explanation, and if you have additional questions please contact your project representative.

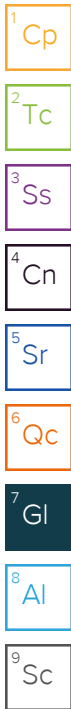
Results Disclaimer - Information that may be provided by the customer, and contained within this report, include Permit Limits, Project Name, Sample ID, Sample Matrix, Sample Preservation, Field Blanks, Field Spikes, Field Duplicates, On-Site Data, Sampling Collection Dates/Times, and Sampling Location. Results relate to the accuracy of this information provided, and as the samples are received.

Abbreviations and Definitions

MDL	Method Detection Limit.
RDL	Reported Detection Limit.
Rec.	Recovery.
RPD	Relative Percent Difference.
SDG	Sample Delivery Group.
(S)	Surrogate (Surrogate Standard) - Analytes added to every blank, sample, Laboratory Control Sample/Duplicate and Matrix Spike/Duplicate; used to evaluate analytical efficiency by measuring recovery. Surrogates are not expected to be detected in all environmental media.
U	Not detected at the Reporting Limit (or MDL where applicable).
Analyte	The name of the particular compound or analysis performed. Some Analyses and Methods will have multiple analytes reported.
Dilution	If the sample matrix contains an interfering material, the sample preparation volume or weight values differ from the standard, or if concentrations of analytes in the sample are higher than the highest limit of concentration that the laboratory can accurately report, the sample may be diluted for analysis. If a value different than 1 is used in this field, the result reported has already been corrected for this factor.
Limits	These are the target % recovery ranges or % difference value that the laboratory has historically determined as normal for the method and analyte being reported. Successful QC Sample analysis will target all analytes recovered or duplicated within these ranges.
Original Sample	The non-spiked sample in the prep batch used to determine the Relative Percent Difference (RPD) from a quality control sample. The Original Sample may not be included within the reported SDG.
Qualifier	This column provides a letter and/or number designation that corresponds to additional information concerning the result reported. If a Qualifier is present, a definition per Qualifier is provided within the Glossary and Definitions page and potentially a discussion of possible implications of the Qualifier in the Case Narrative if applicable.
Result	The actual analytical final result (corrected for any sample specific characteristics) reported for your sample. If there was no measurable result returned for a specific analyte, the result in this column may state "ND" (Not Detected) or "BDL" (Below Detectable Levels). The information in the results column should always be accompanied by either an MDL (Method Detection Limit) or RDL (Reporting Detection Limit) that defines the lowest value that the laboratory could detect or report for this analyte.
Uncertainty (Radiochemistry)	Confidence level of 2 sigma.
Case Narrative (Cn)	A brief discussion about the included sample results, including a discussion of any non-conformances to protocol observed either at sample receipt by the laboratory from the field or during the analytical process. If present, there will be a section in the Case Narrative to discuss the meaning of any data qualifiers used in the report.
Quality Control Summary (Qc)	This section of the report includes the results of the laboratory quality control analyses required by procedure or analytical methods to assist in evaluating the validity of the results reported for your samples. These analyses are not being performed on your samples typically, but on laboratory generated material.
Sample Chain of Custody (Sc)	This is the document created in the field when your samples were initially collected. This is used to verify the time and date of collection, the person collecting the samples, and the analyses that the laboratory is requested to perform. This chain of custody also documents all persons (excluding commercial shippers) that have had control or possession of the samples from the time of collection until delivery to the laboratory for analysis.
Sample Results (Sr)	This section of your report will provide the results of all testing performed on your samples. These results are provided by sample ID and are separated by the analyses performed on each sample. The header line of each analysis section for each sample will provide the name and method number for the analysis reported.
Sample Summary (Ss)	This section of the Analytical Report defines the specific analyses performed for each sample ID, including the dates and times of preparation and/or analysis.

Qualifier Description

B	The same analyte is found in the associated blank.
J	The identification of the analyte is acceptable; the reported value is an estimate.
J1	Surrogate recovery limits have been exceeded; values are outside upper control limits.



ACCREDITATIONS & LOCATIONS

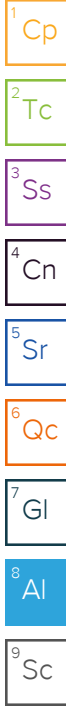
Pace Analytical National 12065 Lebanon Rd Mount Juliet, TN 37122

Alabama	40660	Nebraska	NE-OS-15-05
Alaska	17-026	Nevada	TN000032021-1
Arizona	AZ0612	New Hampshire	2975
Arkansas	88-0469	New Jersey-NELAP	TN002
California	2932	New Mexico ¹	TN00003
Colorado	TN00003	New York	11742
Connecticut	PH-0197	North Carolina	Env375
Florida	E87487	North Carolina ¹	DW21704
Georgia	NELAP	North Carolina ³	41
Georgia ¹	923	North Dakota	R-140
Idaho	TN00003	Ohio-VAP	CL0069
Illinois	200008	Oklahoma	9915
Indiana	C-TN-01	Oregon	TN200002
Iowa	364	Pennsylvania	68-02979
Kansas	E-10277	Rhode Island	LA000356
Kentucky ^{1,6}	KY90010	South Carolina	84004002
Kentucky ²	16	South Dakota	n/a
Louisiana	AI30792	Tennessee ^{1,4}	2006
Louisiana	LA018	Texas	T104704245-20-18
Maine	TN00003	Texas ⁵	LAB0152
Maryland	324	Utah	TN000032021-11
Massachusetts	M-TN003	Vermont	VT2006
Michigan	9958	Virginia	110033
Minnesota	047-999-395	Washington	C847
Mississippi	TN00003	West Virginia	233
Missouri	340	Wisconsin	998093910
Montana	CERT0086	Wyoming	A2LA
A2LA – ISO 17025	1461.01	AIHA-LAP,LLC EMLAP	100789
A2LA – ISO 17025 ⁵	1461.02	DOD	1461.01
Canada	1461.01	USDA	P330-15-00234
EPA-Crypto	TN00003		

¹ Drinking Water ² Underground Storage Tanks ³ Aquatic Toxicity ⁴ Chemical/Microbiological ⁵ Mold ⁶ Wastewater n/a Accreditation not applicable

* Not all certifications held by the laboratory are applicable to the results reported in the attached report.

* Accreditation is only applicable to the test methods specified on each scope of accreditation held by Pace Analytical.



Company Name/Address: **Stantec - Anchorage, AK - Speedway**
 725 E Fireweed Lane
 Suite 200
 Anchorage, AK 99503

Billing Information:
 Accounts Payable
 PO Box 1510
 Springfield, OH 45501

Report to:
Mr. John Marshall

Project Description:
Speedway 5314

City/State Collected: **Wasilla, AK**

Please Circle:
 PT MT CT ET

Email To: **craig.cothron@pacelabs.com**

Analysis / Container / Preservative

Chain of Custody Page ___ of ___



12065 Lebanon Road Mt Juliet, TN 37122
 Phone: 615-758-5858 Alt: 800-767-5859
 Submitting a sample via this chain of custody constitutes acknowledgment and acceptance of the Pace Terms and Conditions found at:
<https://info.pacelabs.com/hubs/pas-standard-terms.pdf>

Lab Project #
STAAAKSSA-5314

Site/Facility ID #
0005314

Quote #

Date Results Needed

No. of Cntrs

Collected by (print): **Eli Fredrickson**

Collected by (signature): *Eli Fredrickson*

Immediately Packed on Ice N ___ Y **X**

Rush? (Lab MUST Be Notified)
 ___ Same Day ___ Five Day
 ___ Next Day ___ 5 Day (Rad Only)
 ___ Two Day ___ 10 Day (Rad Only)
 ___ Three Day

SDG # **61331409**

Table # **E165**

Accnum: **STAAAKSSA**

Template: **T182959**

Prelogin: **P832363**

PM: **034 - Craig Cothron**

PB: *3/3/21*

Shipped Via: **FedEX 2nd Day**

Sample ID	Comp/Grab	Matrix *	Depth	Date	Time	No. of Cntrs	AK101 40mlAmb HCl	AK102 100ml Amb HCl	NAICP 250mlHDPE-HNO3	V8260BTEXC 40mlAmb-HCl	V8260BTEXC 40mlAmb-HCl-BIK	Remarks	Sample # (lab only)
MW-01	6	GW		03/23	1150	9	X	X	X	X			21
MW-02	6	GW		03/23	1345	9	X	X	X	X			22
MW-03	6	GW		03/23	1519	9	X	X	X	X			23
MW-04	6	GW		03/23	1445	9	X	X	X	X			24
RW19-01	6	GW		03/23	1605	9	X	X	X	X			25
DUP1	6	GW		03/23	1529	9	X	X	X	X			24
TRIP BLANK		GW		03/23	1200	1					X		27

* Matrix: SS - Soil AIR - Air F - Filter
 GW - Groundwater B - Bioassay
 WW - WasteWater
 DW - Drinking Water
 OT - Other

Remarks:

Samples returned via: ___ UPS ___ FedEx ___ Courier

Tracking # **95175769 1310**

pH ___ Temp ___
 Flow ___ Other ___

Sample Receipt Checklist

COC Seal Present/Intact:	<input checked="" type="checkbox"/> NP	Y	N
COC Signed/Accurate:	<input checked="" type="checkbox"/>	Y	N
Bottles arrive intact:	<input checked="" type="checkbox"/>	Y	N
Correct bottles used:	<input checked="" type="checkbox"/>	Y	N
Sufficient volume sent:	<input checked="" type="checkbox"/>	Y	N
If Applicable			
VOA Zero Headspace:	<input checked="" type="checkbox"/>	Y	N
Preservation Correct/Checked:	<input checked="" type="checkbox"/>	Y	N
RAD Screen <0.5 mR/hr:	<input checked="" type="checkbox"/>	Y	N

Relinquished by: (Signature) *Eli Fredrickson* Date: **03/24/21** Time: **9:00**

Received by: (Signature) _____ Trip Blank Received: Yes/No
 HCl/MeOH
 TBR

Relinquished by: (Signature) _____ Date: _____ Time: _____

Received by: (Signature) _____ Temp: **16.60 °C** Bottles Received: **5.25.2.5.0** *JA*

Relinquished by: (Signature) _____ Date: _____ Time: _____

Received for lab by: (Signature) *Barbara* Date: **3/26/21** Time: **9:00**

Hold: _____ Condition: **NCF 1 OK**

Laboratory Data Review Checklist

Completed By:

John Marshall

Title:

Environmental Scientist

Date:

5/05/21

Consultant Firm:

Stantec Consulting Services Inc.

Laboratory Name:

Pace Analytical

Laboratory Report Number:

L1131409

Laboratory Report Date:

4/07/2021

CS Site Name:

Speedway 0005314

ADEC File Number:

2265.56.037

Hazard Identification Number:

2986

Note: Any N/A or No box checked must have an explanation in the comments box.

1. Laboratory

a. Did an ADEC CS approved laboratory receive and perform all of the submitted sample analyses?

Yes No N/A Comments:

b. If the samples were transferred to another “network” laboratory or sub-contracted to an alternate laboratory, was the laboratory performing the analyses ADEC CS approved?

Yes No N/A Comments:

2. Chain of Custody (CoC)

a. CoC information completed, signed, and dated (including released/received by)?

Yes No N/A Comments:

b. Correct analyses requested?

Yes No N/A Comments:

3. Laboratory Sample Receipt Documentation

a. Sample/cooler temperature documented and within range at receipt (0° to 6° C)?

Yes No N/A Comments:

b. Sample preservation acceptable – acidified waters, Methanol preserved VOC soil (GRO, BTEX, Volatile Chlorinated Solvents, etc.)?

Yes No N/A Comments:

c. Sample condition documented – broken, leaking (Methanol), zero headspace (VOC vials)?

Yes No N/A Comments:

d. If there were any discrepancies, were they documented? For example, incorrect sample containers/preservation, sample temperature outside of acceptable range, insufficient or missing samples, etc.?

Yes No N/A Comments:

e. Data quality or usability affected?

Comments:

No.

4. Case Narrative

a. Present and understandable?

Yes No N/A Comments:

b. Discrepancies, errors, or QC failures identified by the lab?

Yes No N/A Comments:

c. Were all corrective actions documented?

Yes No N/A Comments:

d. What is the effect on data quality/usability according to the case narrative?

Comments:

None.

5. Samples Results

a. Correct analyses performed/reported as requested on COC?

Yes No N/A Comments:

b. All applicable holding times met?

Yes No N/A Comments:

c. All soils reported on a dry weight basis?

Yes No N/A Comments:

No soil samples collected.

d. Are the reported LOQs less than the Cleanup Level or the minimum required detection level for the project?

Yes No N/A Comments:

e. Data quality or usability affected?

No.

6. QC Samples

a. Method Blank

i. One method blank reported per matrix, analysis and 20 samples?

Yes No N/A Comments:

ii. All method blank results less than limit of quantitation (LOQ) or project specified objectives?

Yes No N/A Comments:

iii. If above LOQ or project specified objectives, what samples are affected?

Comments:

iv. Do the affected sample(s) have data flags? If so, are the data flags clearly defined?

Yes No N/A Comments:

No affected samples.

v. Data quality or usability affected?

Comments:

No.

b. Laboratory Control Sample/Duplicate (LCS/LCSD)

i. Organics – One LCS/LCSD reported per matrix, analysis and 20 samples? (LCS/LCSD required per AK methods, LCS required per SW846)

Yes No N/A Comments:

ii. Metals/Inorganics – one LCS and one sample duplicate reported per matrix, analysis and 20 samples?

Yes No N/A Comments:

iii. Accuracy – All percent recoveries (%R) reported and within method or laboratory limits and project specified objectives, if applicable? (AK Petroleum methods: AK101 60%-120%, AK102 75%-125%, AK103 60%-120%; all other analyses see the laboratory QC pages)

Yes No N/A Comments:

iv. Precision – All relative percent differences (RPD) reported and less than method or laboratory limits and project specified objectives, if applicable? RPD reported from LCS/LCSD, and or sample/sample duplicate. (AK Petroleum methods 20%; all other analyses see the laboratory QC pages)

Yes No N/A Comments:

v. If %R or RPD is outside of acceptable limits, what samples are affected?

Comments:

vi. Do the affected sample(s) have data flags? If so, are the data flags clearly defined?

Yes No N/A Comments:

No affected samples.

vii. Data quality or usability affected? (Use comment box to explain.)

Comments:

No.

c. Matrix Spike/Matrix Spike Duplicate (MS/MSD)

Note: Leave blank if not required for project

i. Organics – One MS/MSD reported per matrix, analysis and 20 samples?

Yes No N/A Comments:

ii. Metals/Inorganics – one MS and one MSD reported per matrix, analysis and 20 samples?

Yes No N/A Comments:

iii. Accuracy – All percent recoveries (%R) reported and within method or laboratory limits and project specified objectives, if applicable?

Yes No N/A Comments:

iv. Precision – All relative percent differences (RPD) reported and less than method or laboratory limits and project specified objectives, if applicable? RPD reported from MS/MSD, and or sample/sample duplicate.

Yes No N/A Comments:

v. If %R or RPD is outside of acceptable limits, what samples are affected?

Comments:

vi. Do the affected sample(s) have data flags? If so, are the data flags clearly defined?

Yes No N/A Comments:

vii. Data quality or usability affected? (Use comment box to explain.)

Comments:

d. Surrogates – Organics Only or Isotope Dilution Analytes (IDA) – Isotope Dilution Methods Only

i. Are surrogate/IDA recoveries reported for organic analyses – field, QC and laboratory samples?

Yes No N/A Comments:

ii. Accuracy – All percent recoveries (%R) reported and within method or laboratory limits and project specified objectives, if applicable? (AK Petroleum methods 50-150 %R for field samples and 60-120 %R for QC samples; all other analyses see the laboratory report pages)

Yes No N/A Comments:

iii. Do the sample results with failed surrogate/IDA recoveries have data flags? If so, are the data flags clearly defined?

Yes No N/A Comments:

iv. Data quality or usability affected?

Comments:

e. Trip Blanks

i. One trip blank reported per matrix, analysis and for each cooler containing volatile samples? (If not, enter explanation below.)

Yes No N/A Comments:

ii. Is the cooler used to transport the trip blank and VOA samples clearly indicated on the COC? (If not, a comment explaining why must be entered below)

Yes No N/A Comments:

iii. All results less than LOQ and project specified objectives?

Yes No N/A Comments:

iv. If above LOQ or project specified objectives, what samples are affected?

Comments:

v. Data quality or usability affected?

Comments:

No.

f. Field Duplicate

i. One field duplicate submitted per matrix, analysis and 10 project samples?

Yes No N/A Comments:

ii. Submitted blind to lab?

Yes No N/A Comments:

iii. Precision – All relative percent differences (RPD) less than specified project objectives?
(Recommended: 30% water, 50% soil)

$$\text{RPD (\%)} = \text{Absolute value of: } \frac{(R_1 - R_2)}{((R_1 + R_2)/2)} \times 100$$

Where R_1 = Sample Concentration
 R_2 = Field Duplicate Concentration

Yes No N/A Comments:

DRO greater than specified project objective.

iv. Data quality or usability affected? (Use the comment box to explain why or why not.)

Comments:

No. Higher value in duplicate assumed to be accurate.

g. Decontamination or Equipment Blank (If not applicable, a comment stating why must be entered below)?

Yes No N/A Comments:

No decontamination or equipment blank were required as only disposable equipment was used.

i. All results less than LOQ and project specified objectives?

Yes No N/A Comments:

No decontamination or equipment blank were required as only disposable equipment was used.

ii. If above LOQ or project specified objectives, what samples are affected?

Comments:

iii. Data quality or usability affected?

Comments:

7. Other Data Flags/Qualifiers (ACOE, AFCEE, Lab Specific, etc.)

a. Defined and appropriate?

Yes No N/A

Comments: