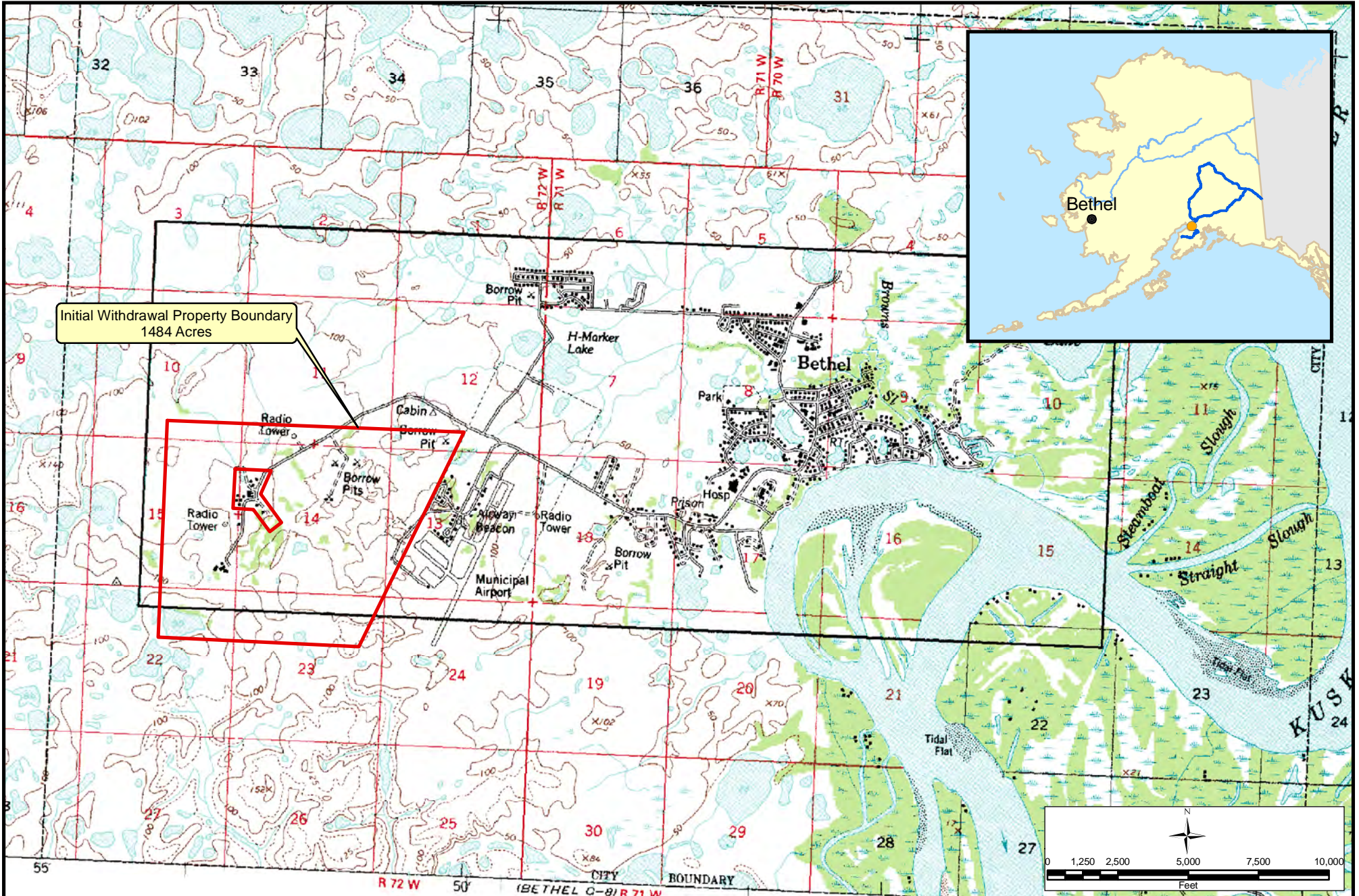


## **FIGURES**

Figure 1	Site Location and Vicinity
Figure 2	Current & Historic Land Boundaries
Figure 3	Historical Figure - Boundary and As-Built Survey of the BIA site, July 12, 1995
Figure 4	Site Buildings
Figure 5	September 5, 1963 Aerial Photograph
Figure 6	August 4, 1990 Aerial Photograph
Figure 7	September 7, 2007 Aerial Photograph
Figure 8	Locations of Contaminants and Environmental Concerns
Figure 9	Historical Figure - Contaminated Soil Outline at the BIA Site (October 1994)
Figure 10	Historical Figure - Source Area Locations and 1993 Fuel Oil Release Data
Figure 11	Historical Figure - 1989 Site Contamination Diagram (Showing 18-Acre Site)
Figure 12	Historical Figure - Test Boring/Monitoring Well Location Map Sites 1 and 2 (Showing 18-Acre Site)
Figure 13	Historical Figure - USAF Monitoring Well Locations (Showing 18-Acre Site)



Source: USGS BETHEL  
(D-8, C-8) Alaska

Date: December 2008

Created by: A. Wetmore

Job #: 2008105

Phase: 1

Contract #:  
701818-R-065



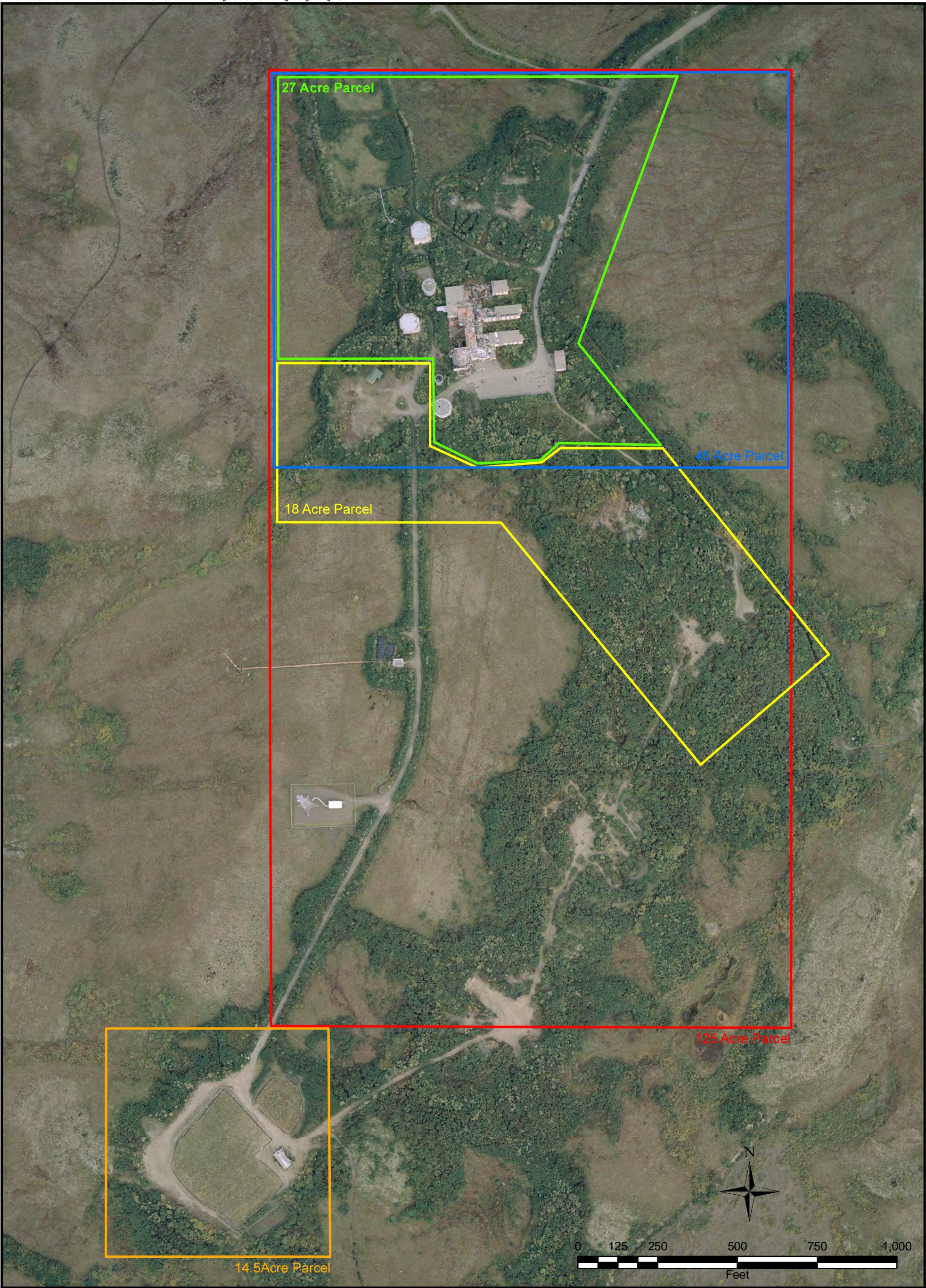
**Bethel Services Inc.**  
A subsidiary of Bethel Native Corporation

## Site Location and Vicinity

Contaminant Investigation  
Bethel BIA Site - Bethel, Alaska

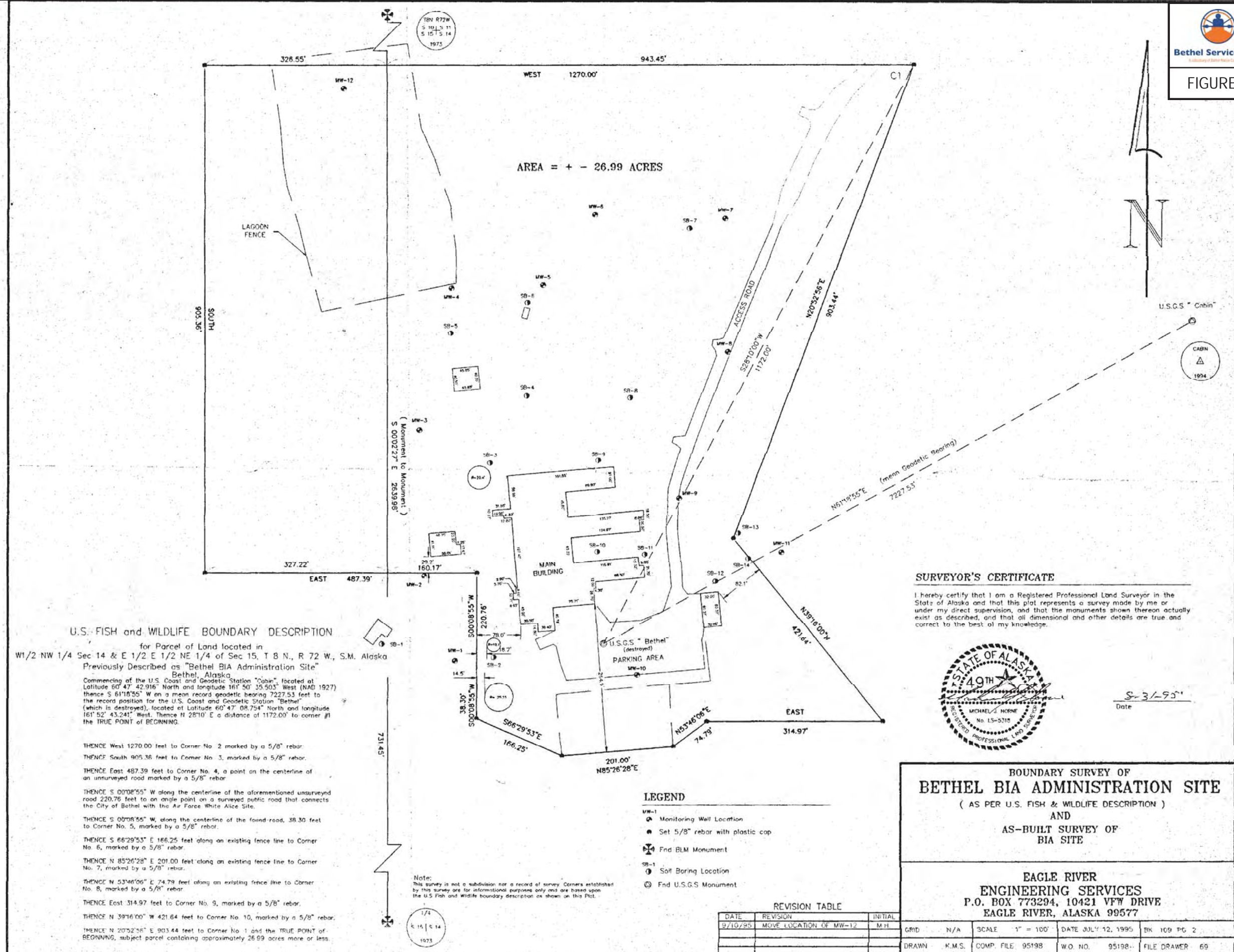
Figure 1



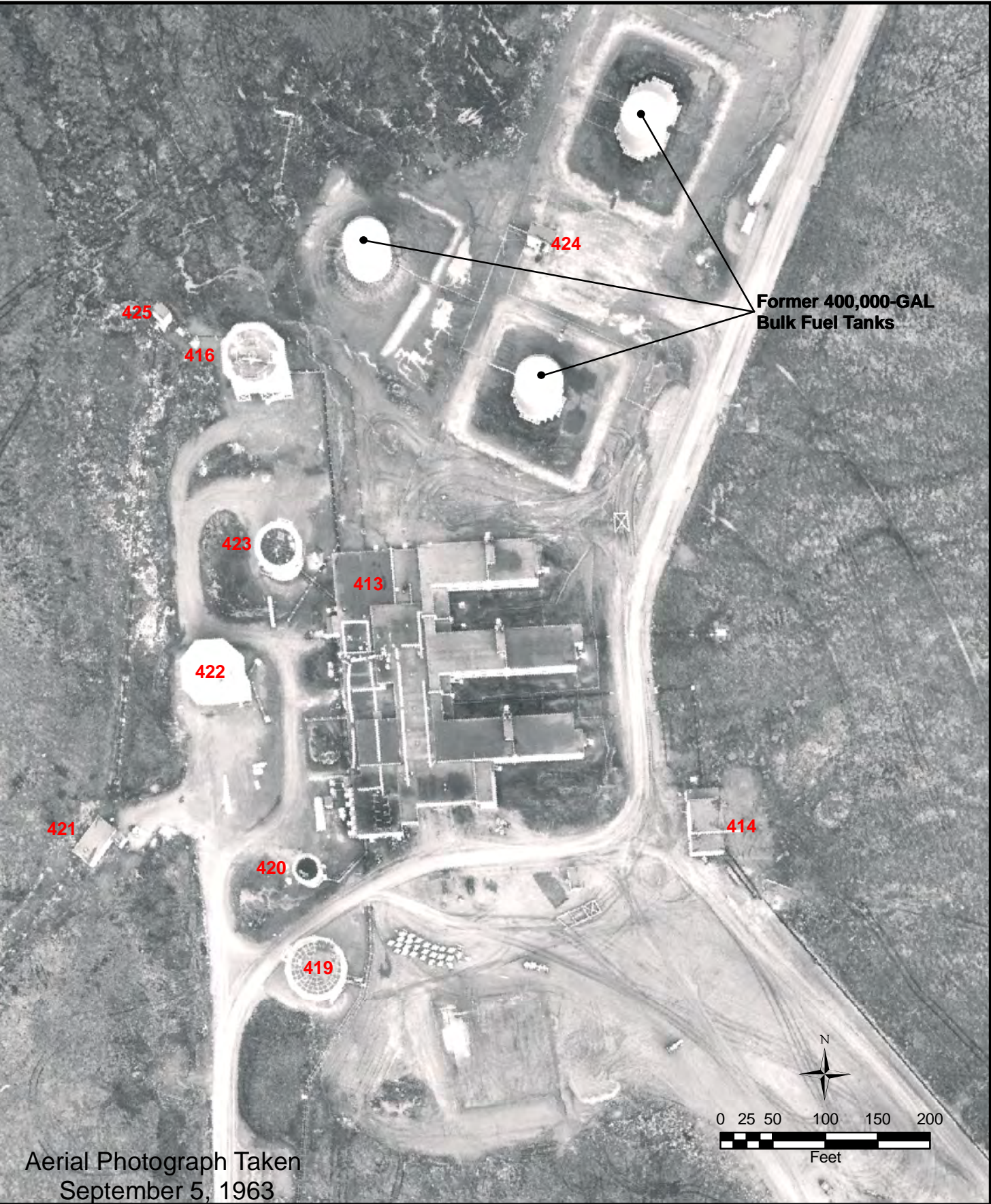


<p>Source: Aero-Metric Inc. 2007</p> <p>Date: December 2008</p> <p>Created by: A. Wetmore</p>	<p>Job #: 2008105</p> <p>Phase: 1</p> <p>Contract #: 701818-R-065</p>	 <p><b>Bethel Services Inc.</b> <small>A subsidiary of Bethel Native Corporation</small></p>	<p><b>Current and Historic Land Boundaries</b></p> <p>Contaminant Investigation Bethel BIA Site - Bethel, Alaska</p>	<p><b>Figure 2</b></p>
---	---	---	--	------------------------









Source:  
Aero-Metric Inc.

Date:  
December 2008

Created by:  
A. Wetmore

Job #:  
2008105

Phase: 1

Contract #: 701818-R-065

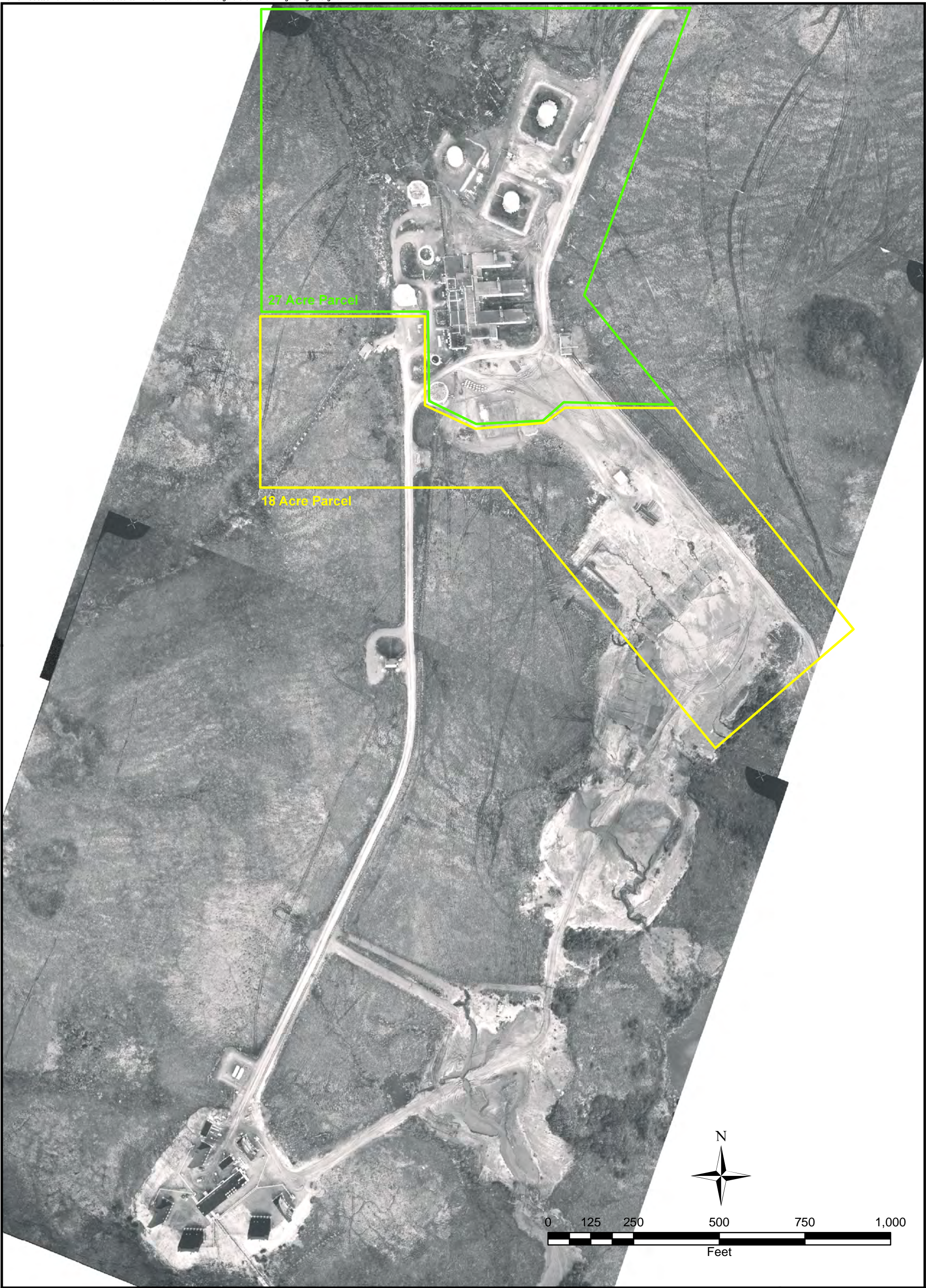


**Site Buildings**

Contaminant Investigation  
Bethel BIA Site - Bethel, Alaska

**Figure 4**





<p>Source: Aero-Metric Inc.</p> <p>Date: December 2008</p> <p>Created by: A. Wetmore</p> <p>Job #: 2008105</p> <p>Phase: 1</p> <p>Contract #: 701818-R-065</p>	 <p><b>Bethel Services Inc.</b> <small>A subsidiary of Bethel Native Corporation</small></p>	<p><b>September 5, 1963 Aerial Photograph</b></p> <p>Contaminant Investigation Bethel BIA Site - Bethel, Alaska</p>	<p><b>Figure 5</b></p>
--	---	---	------------------------





Source:  
Aero-Metric Inc.

Date:  
December 2008

Created by:  
A. Wetmore

Job #:  
2008105

Phase: 1

Contract #: 701818-R-  
065

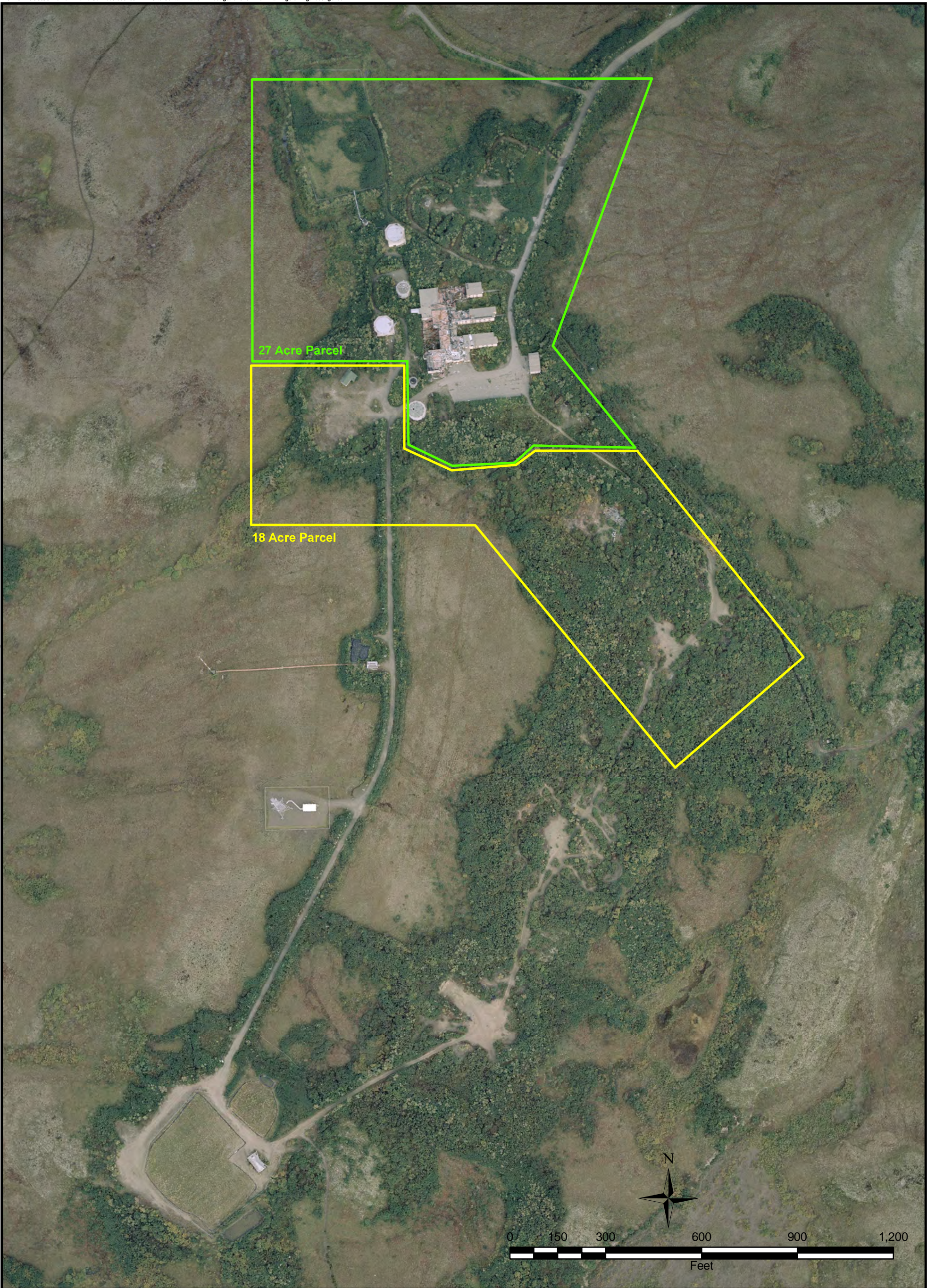


**August 4, 1990 Aerial Photograph**

**Contaminant Investigation**  
**Bethel BIA Site - Bethel, Alaska**

**Figure 6**





Source: Aero-Metric Inc.	Job #: 2008105
Date: December 2008	Phase: 1
Created by: A. Wetmore	Contract #: 701818-R-065

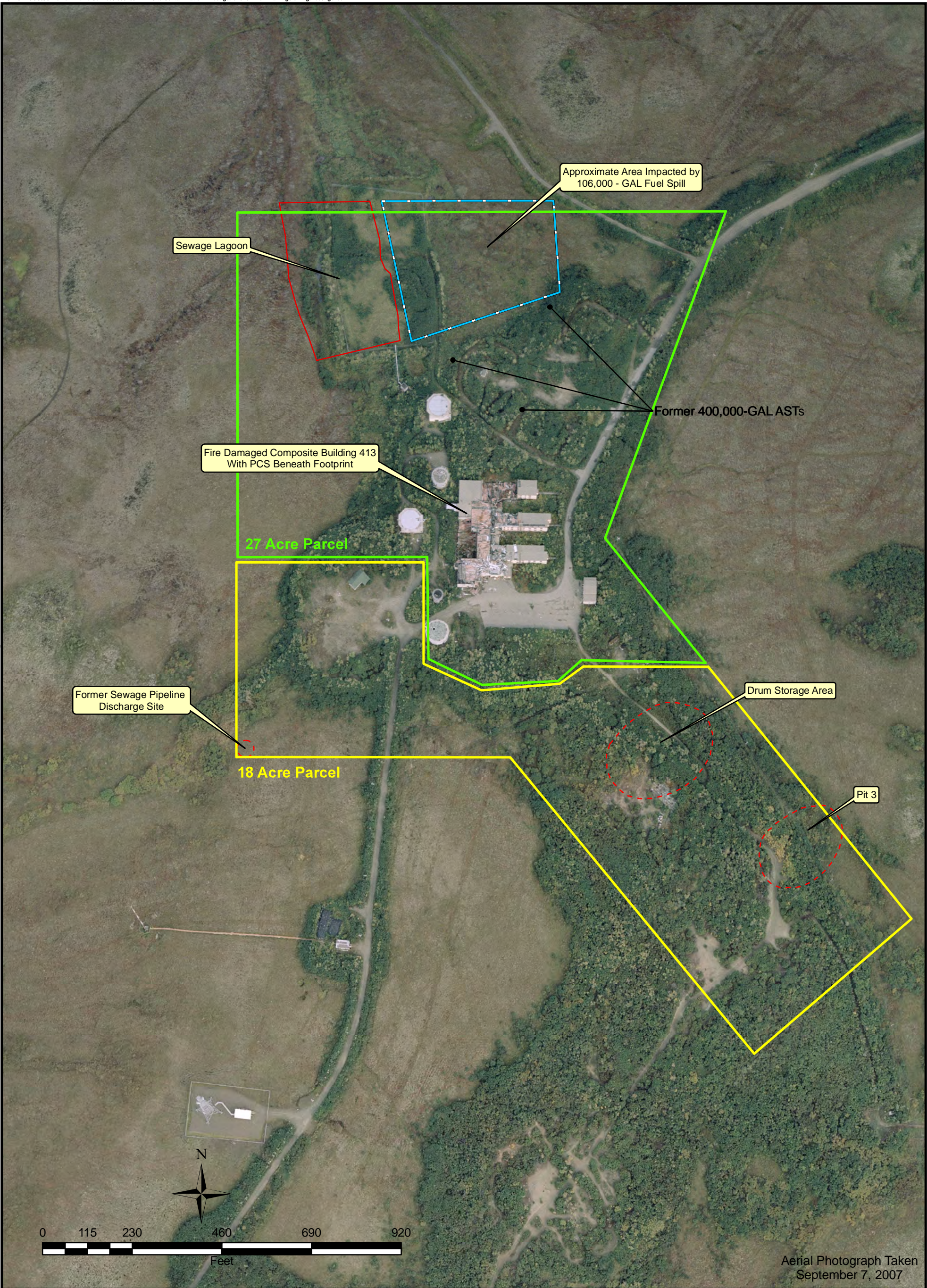


**September 7, 2007 Aerial  
Photograph**

Contaminant Investigation  
Bethel BIA Site - Bethel, Alaska

**Figure 7**





Source:  
Aero-Metric Inc.  
2007

Date:  
May 2009

Created by:  
A. Wetmore

Job #:  
2008105

Phase: 1

Contract #: 701818-R-065




**Location of Contaminants and Environmental Concerns**

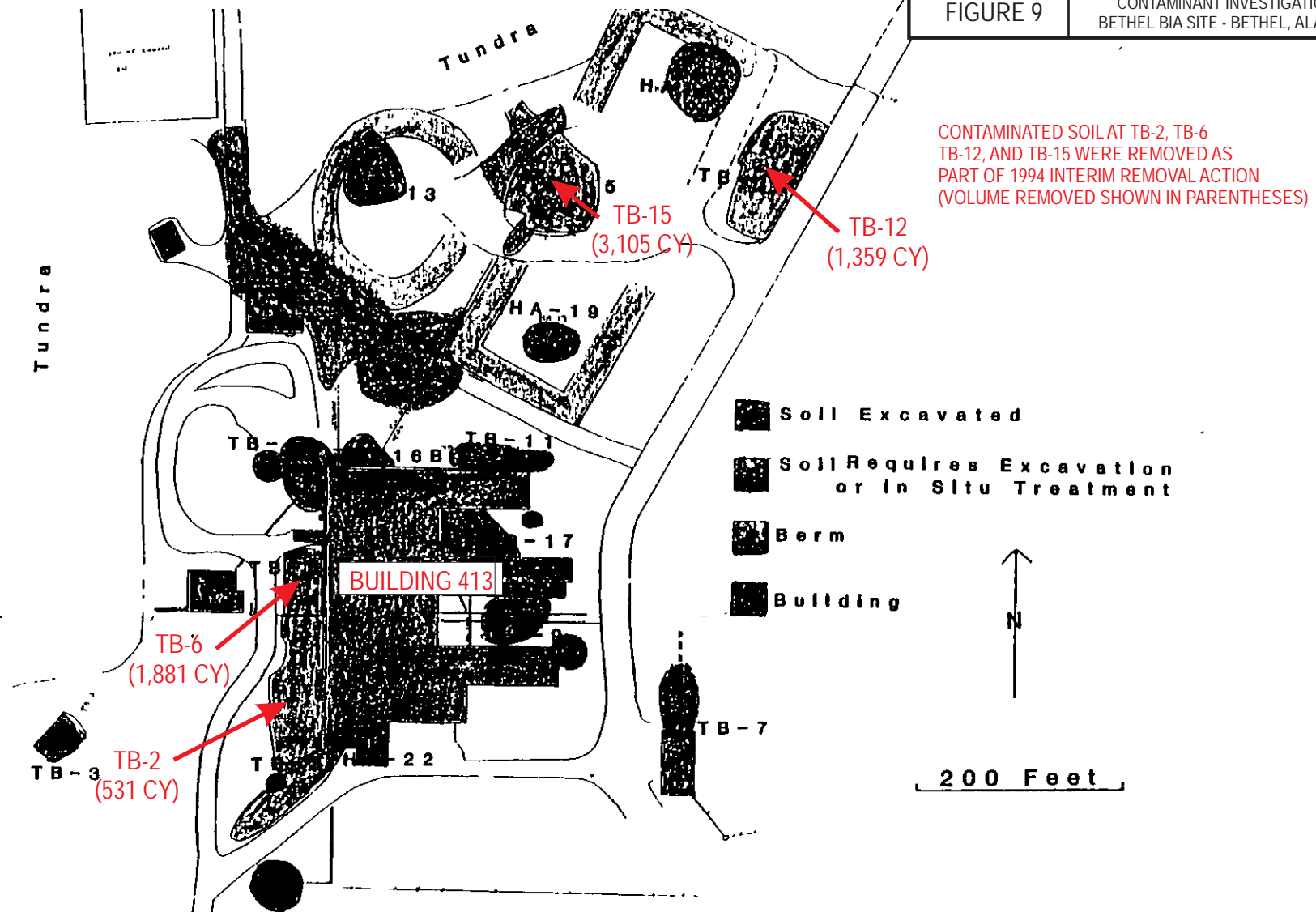
Contaminant Investigation  
Bethel BIA Site - Bethel, Alaska

**Figure 8**



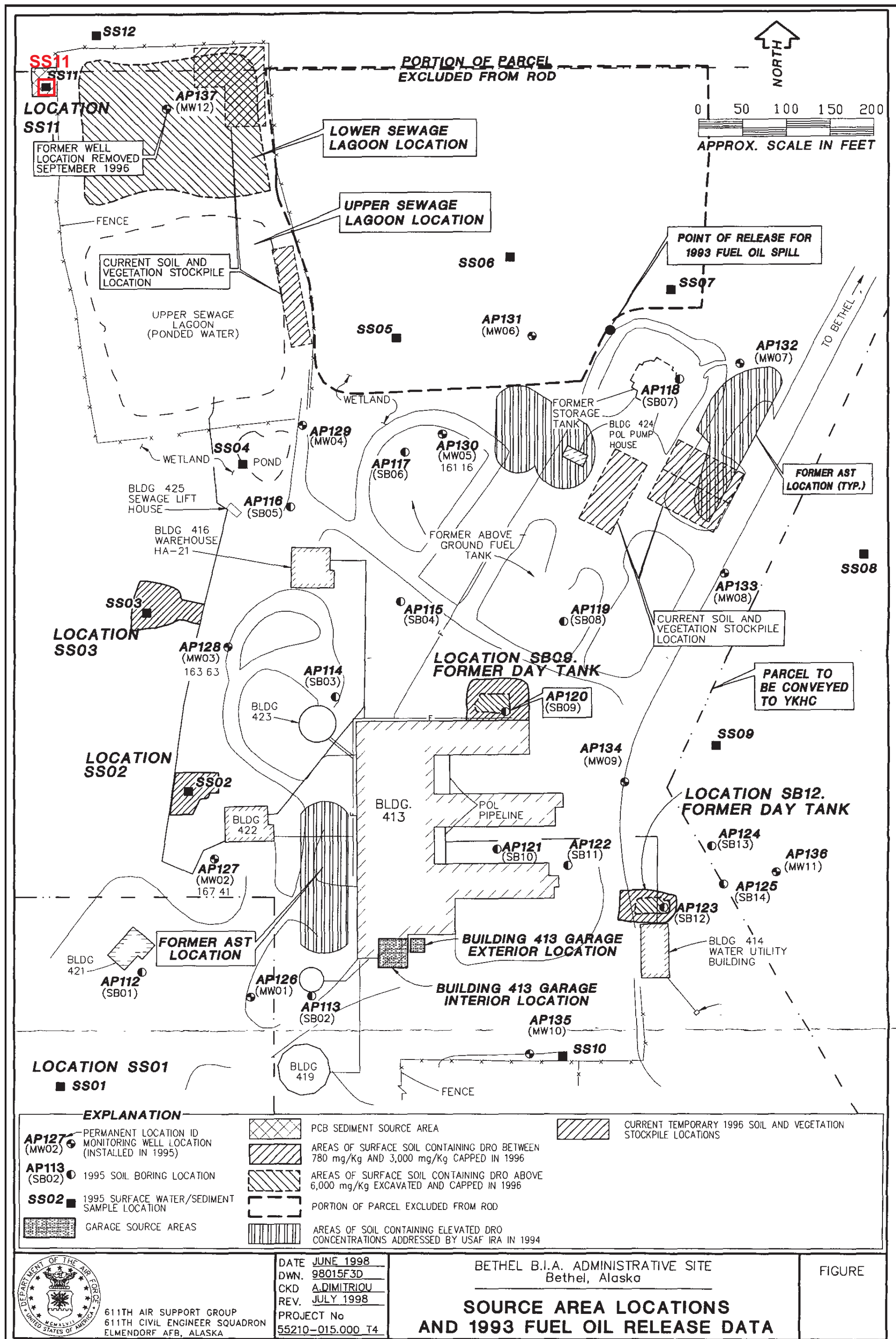
This figure was originally included as Figure 5 in the September 1994 report titled: *Field and Analytical Report for the Interim Removal of Contaminated Soil at the Bureau of Indian Affairs (BIA) Site, Bethel, Alaska, August to September 1994*. Prepared by the USAF 611th Civil Engineering Squadron (611 CES) for the BIA Facilities Management and Construction Center, Albuquerque, New Mexico. [AR11].

 <b>Bethel Services Inc.</b> <small>A subsidiary of Bethel Police Corporation</small>	HISTORICAL FIGURE CONTAMINATED SOIL OUTLINE AT THE BIA SITE (OCTOBER 1994)
<b>FIGURE 9</b>	CONTAMINANT INVESTIGATION BETHEL BIA SITE - BETHEL, ALASKA



Contaminated soil outline at the BIA site, Bethel, Alaska (October, 1994). The outlines for the soil requires excavation were delineated with field screening data acquired at every 20 ft from 3 ft depth. PID data values are listed in Table 20, data locations are in Figure 18, and the contaminated soil volumes are illustrated in Table 19.





611TH AIR SUPPORT GROUP  
611TH CIVIL ENGINEER SQUADRON  
ELMENDORF AFB, ALASKA

DATE JUNE 1998  
DWN. 98015F3D  
CKD A.DIMITRIOU  
REV. JULY 1998  
PROJECT No 55210-015.000 T4

BETHEL B.I.A. ADMINISTRATIVE SITE  
Bethel, Alaska

## SOURCE AREA LOCATIONS AND 1993 FUEL OIL RELEASE DATA

FIGURE

This figure was originally included as Figure 3 in the July 1998 document titled: *Record of Decision Bureau of Indian Affairs Administrative Site, Bethel, Alaska*. Prepared by the EMCON Alaskak, Inc., for the 611th Engineering Squadron (611 CES) Elmendorf AFB, Alaska [AR56].



HISTORICAL FIGURE  
SOURCE AREA LOCATIONS AND  
1993 FUEL OIL RELEASE DATA

FIGURE 10

CONTAMINANT INVESTIGATION  
BETHEL BIA SITE - BETHEL, ALASKA




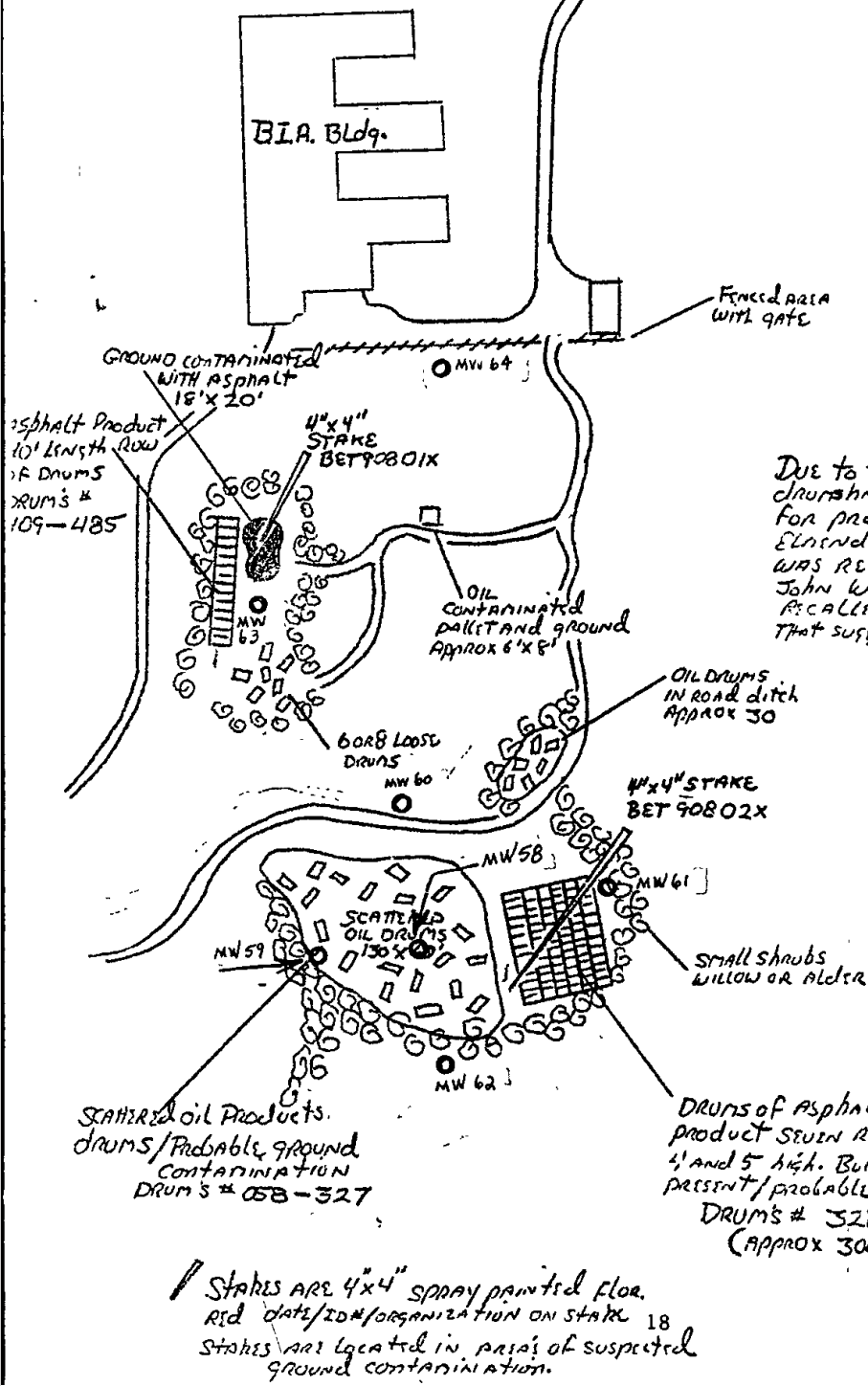
3. 2.1

Nov. 7, 1989  
Site Contamination  
Diagram  
NOT TO SCALE

Bethel Alaska

WO # 4004

 Bethel Services Inc. <small>Contractors of Defense Facilities Construction</small>	HISTORICAL FIGURE 1998 SITE CONTAMINANT DIAGRAM (SHOWING 18-ACRE SITE)
FIGURE 11	CONTAMINANT INVESTIGATION BETHEL BIA SITE - BETHEL, ALASKA




Due to the fact many of the drums have been removed and staged for proper retrograde to Elmendorf AFB. This site dia. was recreated to the best of John Westfal and John Muffitt's recollections. I have seen evidence that suggests this dia. is accurate.  
LK, Pellegrino

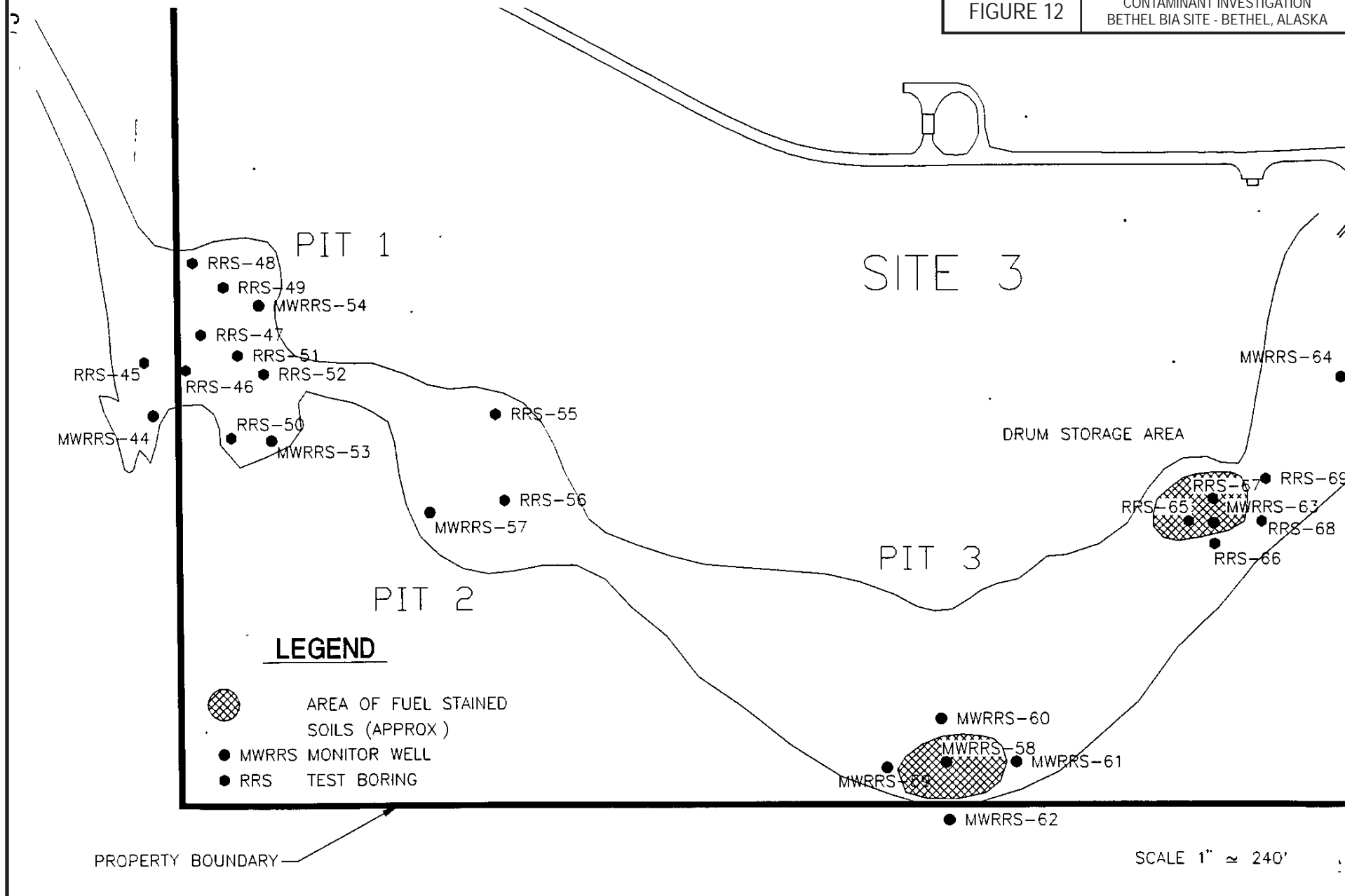
Stakes are 4"x4" spray painted floor. Red date / ID # / organization on stake. 18 stakes are located in areas of suspected ground contamination.

This figure was originally included as Figure 6 in the March 1992 report titled: Preliminary Assessment, Bureau of Indian Affairs, Bethel, Alaska. Prepared by the USAF 11th Civil Engineering Operations Squadron Operating Engineers (11 CEOS) for the BIA Facilities Management and Construction Center, Albuquerque, New Mexico. [AR03].

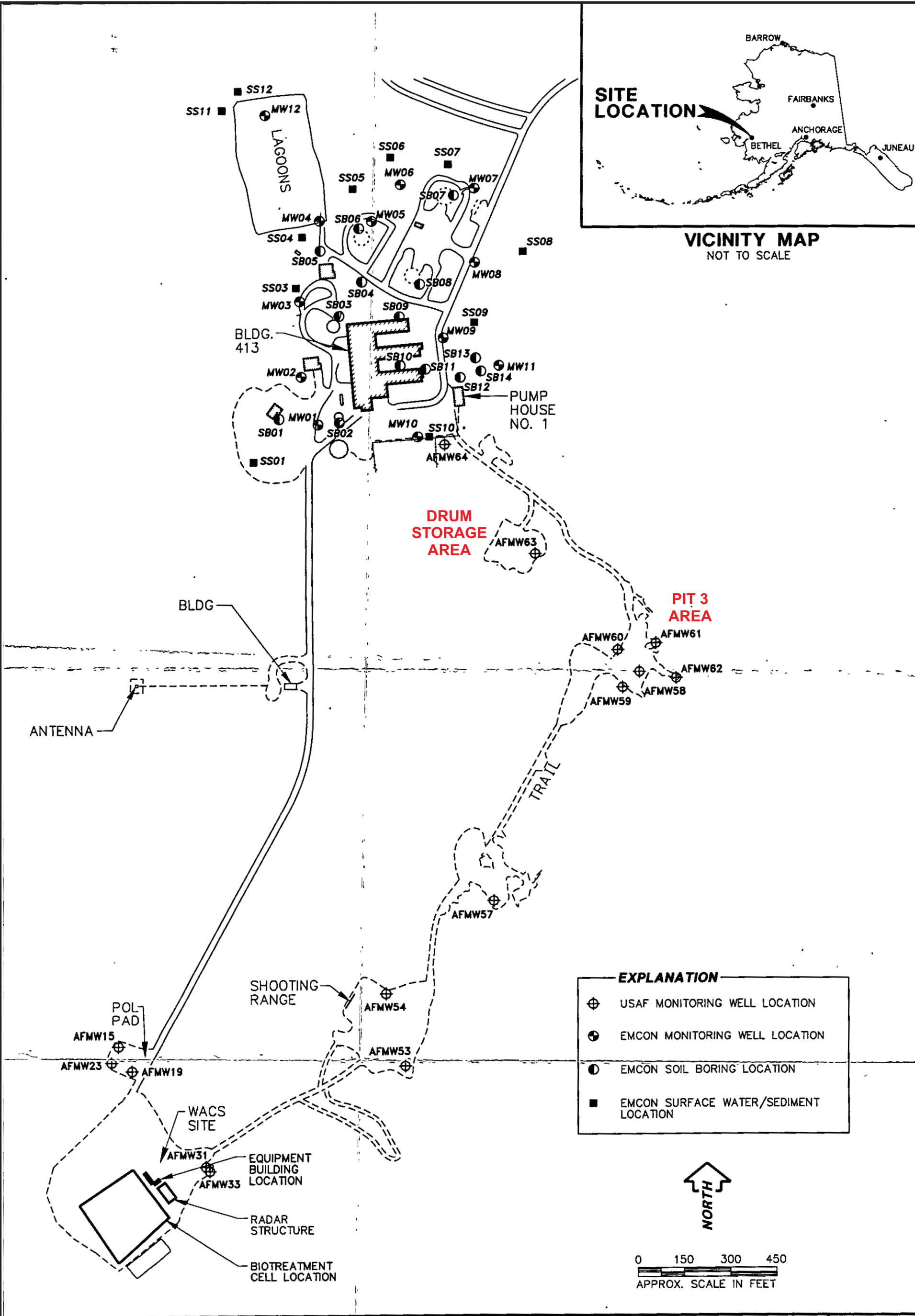




This figure was originally included as Figure 9 in the March 1992 report titled: Preliminary Assessment, Bureau of Indian Affairs, Bethel, Alaska. Prepared by the USAF 11th Civil Engineering Operations Squadron Operating Engineers (11 CEOS) for the BIA Facilities Management and Construction Center, Albuquerque, New Mexico. [AR03].

 <p><b>Bethel Services Inc.</b> <small>A subsidiary of Bethel Police Corporation</small></p>	<p>HISTORICAL FIGURE TEST BORING/MONITORING WELL LOCATION MAP - SITES 1 AND 2 (SHOWING 18-ACRE SITE)</p>
<p>FIGURE 12</p>	<p>CONTAMINANT INVESTIGATION BETHEL BIA SITE - BETHEL, ALASKA</p>







 <p>611TH AIR SUPPORT GROUP 611TH CIVIL ENGINEER SQUADRON ELMENDORF AFB, ALASKA</p>	<p>DATE DEC. 1995 DWN. CDS95028W1A CKD. W.R. REV. FEB. 1996 PROJECT No. 5210-018.007M2</p>	<p>BETHEL BIA ADMINIS Bethel, Ald</p> <p><b>SITE PL</b></p>	 <p>Bethel Services Inc.</p>	<p>HISTORICAL FIGURE USAF MONITORING WELL LOCATIONS (SHOWING 18-ACRE S</p> <p>CONTAMINANT INVESTIGATION BETHEL BIA SITE - BETHEL, ALASKA</p>
--	--	---	---	--

This figure was originally included as Figure 1 in the February 1996 document titled: *Technical Memorandum for Sampling Activities Conducted Under Modification No. P003, Delivery Order 018, September 1995, Bethel BIA Administrative Site, Bethel, Alaska*. Prepared by the EMCON Alaska, Inc., for the 611th Engineering Squadron (611 CES) Elmendorf AFB, Alaska [AR29].