



DEPT. OF ENVIRONMENTAL
CONSERVATION

JAN 15 2014

RECEIVED

2100.26.065

ADEC File No.

Hazard ID No.

INITIAL VAPOR INTRUSION EVALUATION REPORT

Chevron-Branded Service Station 91356
1465 West Northern Lights Boulevard
Anchorage, Alaska
ADEC File ID: 2100.26.065

Prepared for:

Mr. Robert Weimer
Alaska Department of Environmental Conservation

Siobhan Pritchard, P.G.
Senior Project Geologist

John Riggi, P.G.
Senior Project Geologist

DECEMBER 2013
REF. NO. 622232 (19)

Prepared by:
Conestoga-Rovers
& Associates

14998 West 6th Avenue
Suite 800
Golden, Colorado 80401

Office: (720) 974-0935
Fax: (720) 974-0936

web: <http://www.CRAworld.com>

Table of Contents

	Page
Section 1.0 Introduction.....	1
Section 2.0 Site Description and Background	1
2.1 Site Characterization.....	1
2.2 Hydrogeology.....	1
2.3 Contaminants of Potential Concern – Cleanup Levels.....	1
Section 3.0 Site Conditions	1
3.1 Soil Quality.....	1
3.2 Groundwater Quality.....	2
Section 4.0 Vapor Intrusion Pathway Evaluation.....	2
4.1 Indoor Air Inhalation Pathway.....	2
4.2 Vapor Intrusion Evaluation Criteria	2
4.3 Site Vapor Intrusion Risk.....	3
Section 5.0 Conclusions and Recommendations.....	3

**List of Figures
(Following Text)**

- Figure 1 Vicinity Map
- Figure 2 Site Plan

**List of Tables
(Following Text)**

- Table 1 Groundwater Analytical Results

List of Appendices

- Appendix A Site Photographs
- Appendix B Environmental History
- Appendix C Historical Soil Analytical Results

LIST OF ACRONYMS AND ABBREVIATIONS

AAC	Alaska Administrative Code
ADEC	Alaska Department of Environmental Conservation
AS	air sparge
BTEX	benzene, toluene, ethylbenzene, and xylenes
COPCs	contaminants of potential concern
CRA	Conestoga-Rovers & Associates
CSM	conceptual site model
fbg	feet below grade
ft	feet
GRO	gasoline range organics
LNAPL	light non-aqueous phase liquids
mg/l	milligrams per liter
mg/kg	milligrams per kilogram
MTBE	methyl-tertiary butyl ether
P.G.	Project Geologist
Ref. No.	reference number
SVE	soil vapor extraction
UST	underground storage tank
yd ³	cubic yards

Section 1.0 Introduction

Conestoga-Rovers & Associates (CRA) is submitting this *Initial Vapor Intrusion Evaluation Report* to the Alaska Department of Environmental Conservation (ADEC) on behalf of Chevron Environmental Management Company (Chevron) for Chevron site 91356 in Anchorage, Alaska. A conceptual site model (CSM) was submitted to the ADEC in 2013 and identified inhalation of indoor and outdoor air as complete exposure pathways. This report was written in accordance with ADEC's October 2012 *Vapor Intrusion Guidance for Contaminated Sites*. The site background, site conditions, vapor intrusion pathway evaluation, conclusions and recommendations, and references are presented below.

Section 2.0 Site Description and Background

2.1 Site Characterization

The site is an active Chevron-branded service station located at 1465 West Northern Lights Boulevard in Anchorage, Alaska (Figure 1). The property's legal description is Chevron TR 1. The latitude and longitude are 61.195146° North and 149.912277° West. The site is currently owned by the Cook Inlet Marketing Group. Station facilities currently consist of three underground storage tanks (USTs), three fuel dispenser islands, product piping, and a station building (Figure 2). Site photographs are presented as Appendix A. Site environmental history is presented as Appendix B.

2.2 Hydrogeology

The site is located in south central Alaska, southeast of the northern Knik Arm of Cook Inlet. Historical groundwater depths have ranged between approximately 11 and 16 feet below grade (fbg). Groundwater flows to the southwest with a general gradient of 0.001.

2.3 Contaminants of Potential Concern – Cleanup Levels

Site contaminants of potential concern (COPCs) are diesel range organics (DRO), gasoline range organics (GRO), benzene, and tetrachloroethene (PCE). Table C Groundwater Cleanup Levels (*Title 18 Alaska Administrative Code (ACC) 75.345*) and Method Two Soil Cleanup Levels, Tables B1 and B2, under 40-inch zone, migration to groundwater (*Title 18 AAC 75.341*) are the established site cleanup levels for groundwater and soil.

Section 3.0 Site Conditions

3.1 Soil Quality

COPCs in soil are GRO and PCE. Petroleum hydrocarbons were detected at concentrations above ADEC Method Two Cleanup Levels in soil samples collected during the installation of monitoring wells MW-1 through MW-4 on July 1, 1999. Maximum GRO and benzene concentrations were 929 milligrams per

kilogram (mg/kg) and 3 mg/kg, respectively, in soil sample MW-2 at 17 fbg. No petroleum hydrocarbons were detected in offsite soil samples collected during the installations of monitoring wells MW-5 and MW-6. Confirmation soil samples were collected in July 2010 near the UST and former dispenser islands. PCE was detected above ADEC Method Two Soil Cleanup Levels in SB-10-1 near the former used oil and heating oil USTs. Petroleum hydrocarbons were detected above ADEC Method Two Soil Cleanup Levels in samples collected from SB-10-5 and SB-10-6; however the samples were collected beneath the groundwater table in saturated sandy soil and are not representative of the residual soil impact. Soil boring SB1-1 (MW-9) was advanced on July 23, 2012 near the former waste oil and heating oil USTs to assess for PCE. The highest PCE concentration (0.61 mg/kg) was detected in the soil sample collected at 12 fbg. Historical soil analytical results are presented as Appendix C.

3.2 Groundwater Quality

COPCs in groundwater are DRO and PCE. Groundwater samples contained petroleum hydrocarbons above the ADEC Table C Groundwater Cleanup Levels for DRO and PCE during the September 2013 sampling event. Sample MW-3 contained the highest DRO (1.8 milligrams per liter (mg/L)) and PCE (0.024 mg/L). Groundwater analytical results are presented in Table 1.

Section 4.0 Vapor Intrusion Pathway Evaluation

4.1 Indoor Air Inhalation Pathway

The ADEC defines vapor intrusion as the migration of volatile chemicals from a subsurface vapor source into overlying buildings (ADEC, 2009). Inhalation of indoor air is a complete pathway based on the presence of volatile compounds in soil and groundwater; and occupied buildings are present within 100 feet (ft) of petroleum hydrocarbons or 30 ft of non-hydrocarbons in the subsurface.

4.2 Vapor Intrusion Evaluation Criteria

The ADEC requires additional vapor intrusion pathway investigation when one or more of the following conditions exist:

- COPCs are present in close proximity to structures (30 ft from a petroleum source, and 100 ft from a non-petroleum source);
- Volatile chemical concentrations in groundwater exceed the ADEC Groundwater Target Levels (ADEC, 2009, Appendix G) in close proximity to structures, and static groundwater depth is less than 20 fbg;
- Volatile chemical concentrations in soil gas exceed the ADEC Shallow and Deep Soil Gas Target Levels (ADEC, 2009, Appendix E & F).

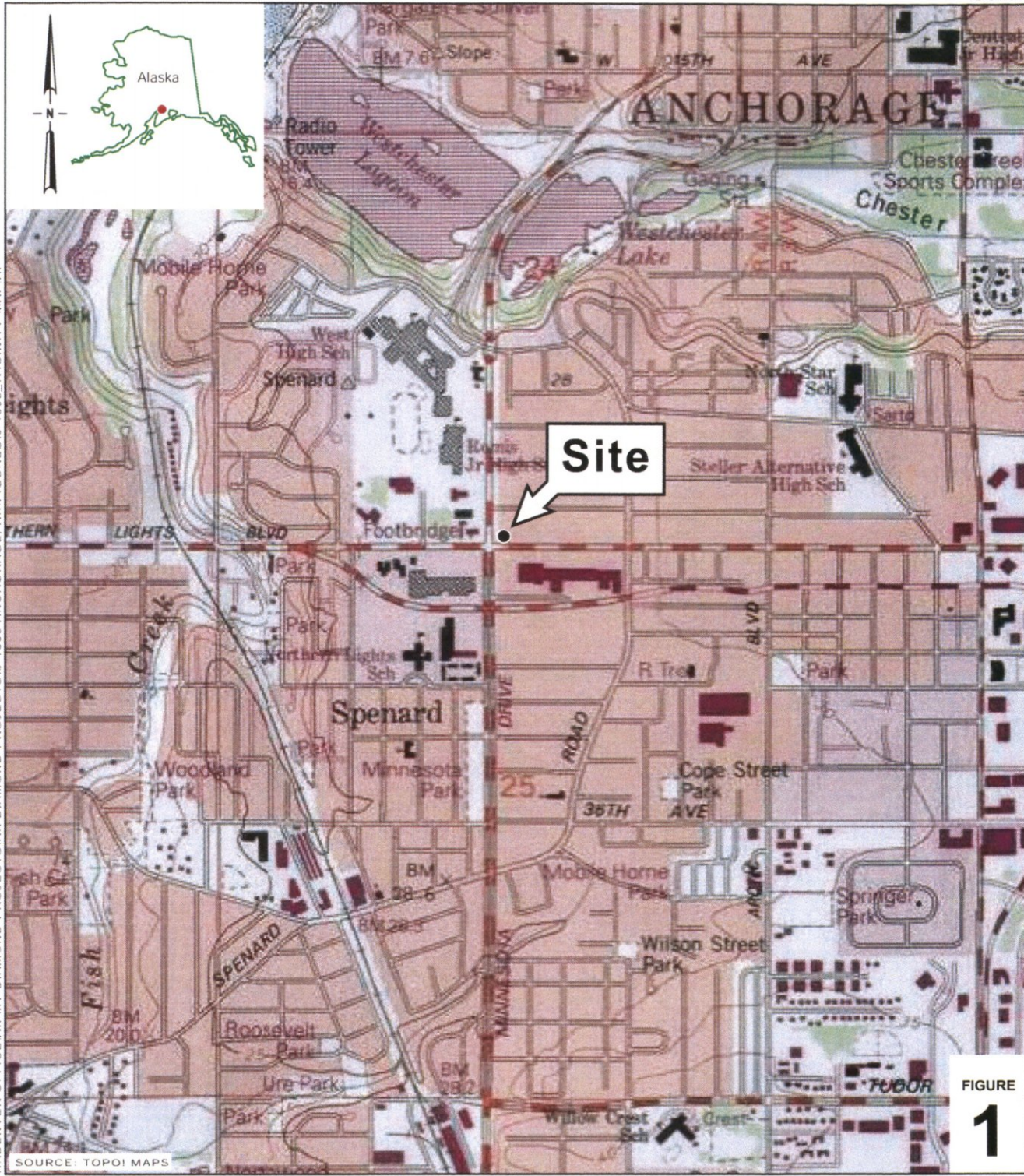
4.3 Site Vapor Intrusion Risk

Vapor intrusion is a potentially open pathway requiring additional assessment. PCE has been detected in soil above ADEC Method Two soil cleanup levels within 30 ft of the station building. Soil gas samples have not been collected at the site, but are required based on volatile chemical concentrations in soil.

Section 5.0 Conclusions and Recommendations

PCE has been identified in soil and groundwater above cleanup levels within 30 ft of the station building. CRA recommends a vapor intrusion investigation in 2014 to further assess indoor and outdoor inhalation pathways. CRA will submit a workplan in the spring 2014 outlining the investigation strategy.

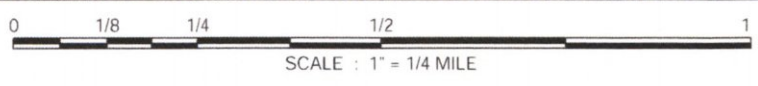
Figures



R:\DENVER OFFICE\AK MT DIAMOND PROJECTS\AK DIAMOND PROJECTS\9-1356 ANCHORAGE_AK\FIGURES\9-1356_VICINITY_MAP.AI

SOURCE: TOPOI MAPS

FIGURE 1



**Chevron-Branded
Service Station 9-1356**
1465 Northern Lights Boulevard
Anchorage, Alaska



**CONESTOGA-ROVERS
& ASSOCIATES**

Vicinity Map

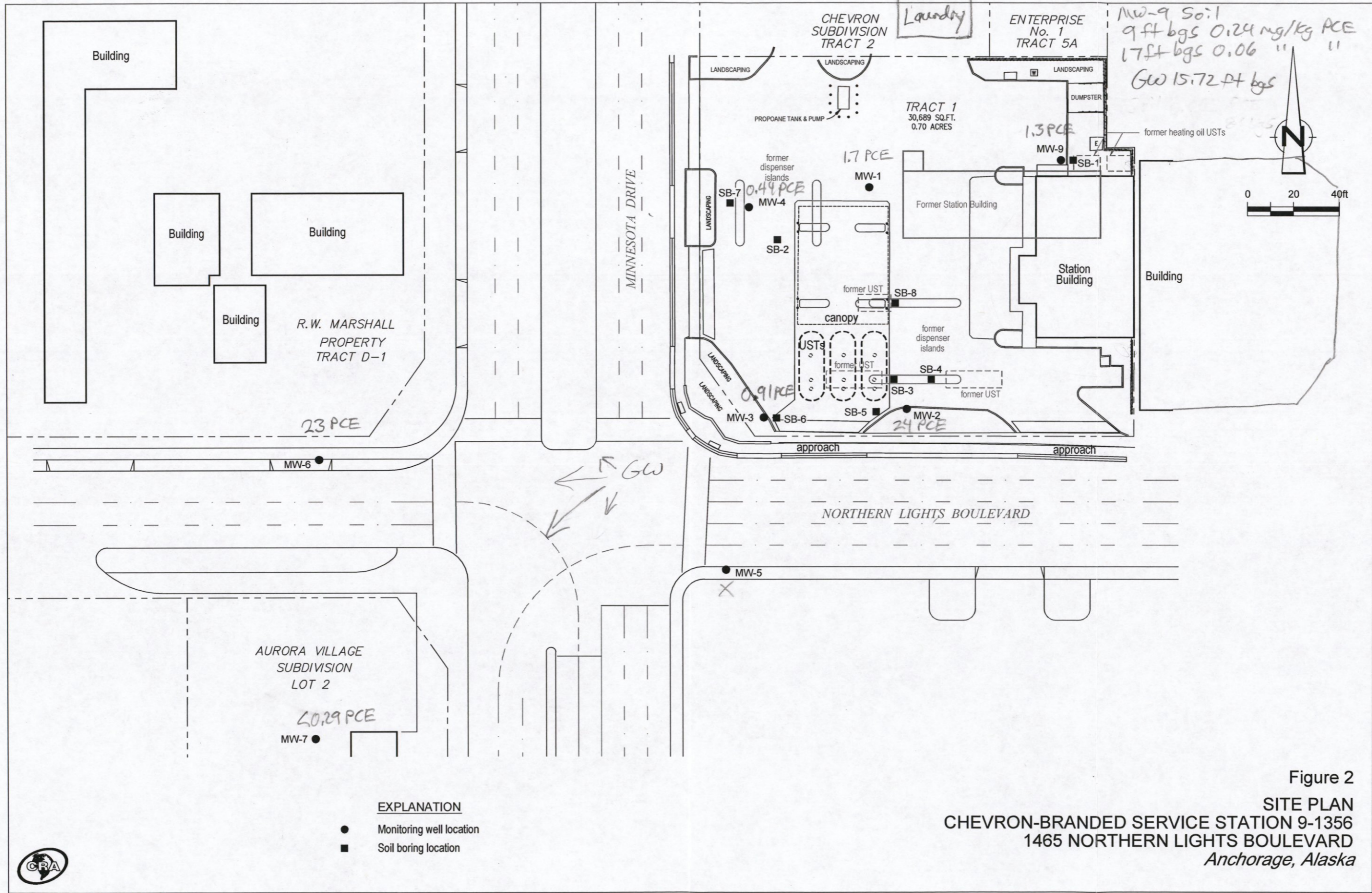


Figure 2
 SITE PLAN
 CHEVRON-BRANDED SERVICE STATION 9-1356
 1465 NORTHERN LIGHTS BOULEVARD
 Anchorage, Alaska



Tables

TABLE 1
 GROUNDWATER ANALYTICAL RESULTS
 CHEVRON-BRANDED SERVICE STATION 9-1356
 1465 NORTHERN LIGHTS BOULEVARD
 ANCHORAGE, ALASKA

Location	Date	TOC ft msl	DTW ftg	GWE ft msl	HYDROCARBONS			PRIMARY VOC'S				ADDITIONAL VOC'S			
					DRO mg/l	GRO mg/l	Benzene mg/l	Toluene mg/l	Ethyl-benzene mg/l	Total xylenes mg/l	MTBE mg/l	1,2-EDB mg/l	1,2-DCA mg/l	PCE mg/l	Chloroform mg/l
ADEC Groundwater Cleanup Levels ^W					1.5	2.2	0.005	1.0	0.7	10	0.47	0.005	0.00005	0.005	0.14
MW-1	07/03/1999	95.30	15.61	79.69	-	<0.050	<0.0005	<0.0005	<0.0005	<0.0005	<0.002	-	-	-	-
MW-1	10/11/1999	95.30	14.84	80.46	-	<0.050	<0.0005	<0.0005	<0.0005	<0.0005	<0.005	-	-	-	-
MW-1	05/19/2000	95.30	13.64	81.66	-	<0.080	<0.0005	<0.0005	<0.0005	<0.0010	<0.002	-	-	-	-
MW-1	09/28/2000	95.30	12.80	82.50	-	<0.050	<0.0002	<0.0005	<0.0005	<0.0010	<0.001	-	-	-	-
MW-1	05/04/2001	95.30	14.34	80.96	-	<0.050	0.000274	<0.0005	<0.0005	<0.0010	<0.001	-	-	-	-
MW-1	10/04/2001	95.30	14.89	80.41	-	<0.050	<0.0002	<0.0005	<0.0005	<0.0010	<0.001	-	-	-	-
MW-1	05/04/2002	95.30	14.78	80.52	-	<0.050 / <0.050	0.000361 / <0.0002	0.00103 / <0.0005	<0.0005 / <0.0005	<0.0010 / <0.0010	<0.001 / <0.001	-	-	-	-
MW-1	09/22/2002	95.30	13.74	81.56	-	<0.050	<0.0002	<0.0005	<0.0005	<0.0010	<0.001	-	-	-	-
MW-1	05/30/2003	95.39	15.25	80.14	-	<0.010 / <0.010	<0.0005 / <0.0005	<0.0005 / <0.0005	<0.0005 / <0.0005	<0.0005 / <0.0005	<0.002 / <0.002	-	-	-	-
MW-1	10/02/2003	95.39	15.50	79.89	-	-	-	-	-	-	-	-	-	-	-
MW-1	06/02/2004	95.39	15.23	80.16	-	-	-	-	-	-	-	-	-	-	-
MW-1	09/22/2004	95.39	15.06	80.33	-	-	-	-	-	-	-	-	-	-	-
MW-1	05/11/2005	95.39	15.02	80.37	-	-	-	-	-	-	-	-	-	-	-
MW-1	06/22/2005	95.39	14.26	81.13	-	-	-	-	-	-	-	-	-	-	-
MW-1	05/09/2006	95.39	16.24	79.15	-	-	-	-	-	-	-	-	-	-	-
MW-1	09/20/2006	95.39	15.69	79.70	-	-	-	-	-	-	-	-	-	-	-
MW-1	05/15/2007	95.39	16.23	79.16	-	-	-	-	-	-	-	-	-	-	-
MW-1	09/23/2007	95.39	16.04	79.35	-	-	-	-	-	-	-	-	-	-	-
MW-1	05/05/2008	95.39	16.22	79.17	-	-	-	-	-	-	-	-	-	-	-
MW-1	07/16/2008	95.39	16.17	79.22	-	-	-	-	-	-	-	-	-	-	-
MW-1	06/16/2009	95.39	16.40	78.99	-	-	-	-	-	-	-	-	-	-	-
MW-1	08/27/2009	95.39	16.35	79.04	-	-	-	-	-	-	-	-	-	-	-
MW-1	05/06/2010	95.39	16.57	78.82	-	-	-	-	-	-	-	-	-	-	-
MW-1	05/19/2011	95.39	16.72	78.67	-	-	-	-	-	-	-	-	-	-	-
MW-1	08/23/2011	95.39	16.39	79.00	-	-	-	-	-	-	-	-	-	-	-
MW-1	05/23/2012	95.39	16.11	79.28	-	-	-	-	-	-	-	-	-	-	-
MW-1	07/31/2012	95.39	15.91	79.48	-	-	-	-	-	-	-	-	-	-	-
MW-1	05/23/2013	95.39	15.68	79.71	-	-	-	-	-	-	-	-	<0.00022	0.00036 J	0.018
MW-1 ^{HS}	05/23/2013	95.39	15.68	79.71	-	-	-	-	-	-	-	-	<0.00022	0.00032 J	0.018
MW-1	09/17/2013	95.39	15.75	79.64	-	-	-	-	-	-	-	-	-	-	-
MW-1	09/18/2013	-	-	-	-	-	<0.00024	<0.00023	<0.00024	<0.00072	-	-	<0.00022	0.0017	0.015
MW-2	07/03/1999	94.61	15.30	79.31	-	7.14	0.027	0.048	0.268	1.14	<0.100	-	-	-	-
MW-2	10/11/1999	94.61	14.27	80.34	-	20.4 / 21.8	<0.012 / <0.012	0.575 / 0.629	1.43 / 1.56	5.93 / 6.50	<0.125 / <0.125	-	-	-	-
MW-2	05/19/2000	94.61	12.92	81.69	-	8.84	0.0259	0.0124	<0.005	1.22	<0.020 / <0.002	-	-	-	-
MW-2	09/28/2000	94.61	11.97	82.64	-	4.52	<0.0055	0.0388	0.078	1.19	0.0303 / <0.020	-	-	-	-
MW-2	05/04/2001	94.61	13.75	80.86	-	7.02	0.012	0.0429	0.469	1.40	0.0452 / <0.005	-	-	-	-
MW-2	10/04/2001	94.61	14.35	80.26	-	14.2	0.0244	0.101	1.13	3.30	0.0884 / <0.005	-	-	-	-
MW-2	05/04/2002	94.61	14.23	80.38	-	19.2	<0.020	0.118	1.36	4.10	0.115 / <0.050	-	-	-	-
MW-2	09/22/2002	94.61	13.11	81.50	-	3.62	0.00262	0.0201	0.363	0.898	0.0184 / <0.050	-	-	-	-
MW-2	05/30/2003	94.61	14.54	80.07	-	13.0	0.0030	0.040	0.790	1.80	<0.002	-	-	-	-
MW-2	10/02/2003	94.61	14.81	79.80	-	4.60	0.0009	0.006	0.160	0.410	<0.002	-	-	-	-
MW-2	06/02/2004	94.61	14.49	80.12	-	14.0	0.0030	0.029	0.850	2.50	<0.002	-	-	-	-
MW-2	09/22/2004	94.61	14.48	80.13	-	10.0	<0.005	0.012	0.630	1.40	<0.005	-	-	-	-
MW-2	05/11/2005	94.61	14.23	80.38	-	7.00	0.0040	0.006	0.500	0.770	<0.002	-	-	-	-
MW-2	09/22/2005	94.61	14.09	80.52	-	4.70	0.0030	0.003	0.410	0.390	<0.002	-	-	-	-
MW-2	05/09/2006	94.61	15.43	79.18	-	0.094	<0.0005	<0.0005	0.008	0.0075	<0.0025	<0.0005	<0.0005	-	-
MW-2	09/20/2006	94.61	14.88	79.73	-	0.067	<0.0005	<0.0005	0.002	0.0035	<0.0025	-	-	-	-

TABLE 1
 GROUNDWATER ANALYTICAL RESULTS
 CHEVRON-BRANDED SERVICE STATION 9-1356
 1465 NORTHERN LIGHTS BOULEVARD
 ANCHORAGE, ALASKA

Location	Date	TOC ft msl	DTW ftg	GWE ft msl	HYDROCARBONS		PRIMARY VOCs				ADDITIONAL VOC'S				
					DRO mg/l	GRO mg/l	Benzene mg/l	Toluene mg/l	Ethyl-benzene mg/l	Total xylenes mg/l	MTBE mg/l	1,2-EDB mg/l	1,2-DCA mg/l	PCE mg/l	Chloroform mg/l
ADEC Groundwater Cleanup Levels*					1.5	2.2	0.005	1.0	0.7	10	0.47	0.005	0.00005	0.005	0.14
MW-2	05/15/2007	94.59	15.32	79.27	-	0.100	<0.0010	<0.0010	0.005	0.004	<0.003	-	-	-	-
MW-2	09/23/2007	94.59	15.26	79.33	-	0.200 / 0.200	<0.0010 / <0.0010	<0.0010 / <0.0010	0.007 / 0.010	0.003 / 0.004	<0.003 / <0.003	-	-	-	-
MW-2	05/05/2008	94.59	15.30	79.29	-	<0.050	<0.0005	<0.0005	0.0009	<0.0015	<0.002	-	-	-	-
MW-2	07/16/2008	94.59	15.21	79.38	0.096	0.06	<0.001	<0.001	0.003	0.002	-	-	-	-	-
MW-2	06/16/2009	94.59	15.43	79.16	0.084 J	<0.090 J	<0.0005	<0.0005	0.0031	0.0018 J	-	-	-	-	-
MW-2	08/27/2009	94.59	15.40	79.19	0.12 J	0.31	0.0011 J	<0.0005	0.0050	0.0063	-	-	-	-	-
MW-2	05/06/2010	94.59	15.58	79.01	0.068 J / 0.092 J	<0.010 / <0.010	<0.0005 / <0.0005	<0.0005 / <0.0005	<0.0005 / <0.0005	<0.0015 / <0.0015	-	-	-	-	-
MW-2	08/05/2010	94.59	15.38	79.21	0.071 J	0.024 J	<0.0005	<0.0005	<0.0005	<0.0015	-	-	-	-	-
MW-2	05/19/2011	94.59	15.67	78.92	0.067 J	<0.010	<0.0005	<0.0005	<0.0005	<0.0015	-	-	-	-	-
MW-2	08/23/2011	94.59	15.35	79.24	<0.049	0.055 J	<0.0005	<0.0005	0.0005 J	<0.0015	-	-	-	-	-
MW-2	05/23/2012	94.59	15.04	79.55	<0.049 UJ	0.025 J	<0.0005	<0.0005	0.0005 J	<0.0015	-	-	-	-	-
MW-2	07/31/2012	94.59	14.82	79.77	0.89	2.9	<0.0060	0.0014 J	0.20	0.26	-	-	-	-	-
MW-2	05/23/2013	94.59	14.51	80.08	0.72	1.7	0.00034 J	0.00062 J	0.21	0.26	-	-	<0.00022	0.046	0.0038
MW-2 ^{HS}	05/23/2013	94.59	14.51	80.08	1.5	0.43	<0.00024	<0.00023	0.031	0.046	-	-	<0.00022	0.018	0.0051
MW-2	09/17/2013	94.59	14.02	80.57	-	-	-	-	-	-	-	-	-	-	-
MW-2	09/18/2013	-	-	-	1.8	0.68	<0.00024	<0.00023	0.023	0.017	-	-	<0.00022	0.024	0.0052
MW-3	07/03/1999	93.57	14.92	78.65	-	6.29	0.064	0.349	0.279	0.781	<0.020	-	-	-	-
MW-3	10/11/1999	93.57	13.33	80.24	-	6.08	0.194	0.341	0.406	1.15	<0.025	-	-	-	-
MW-3	05/19/2000	93.57	12.17	81.40	-	8.44 / 9.49	0.0586 / 0.0629	0.401 / 0.418	0.398 / 0.414	1.52 / 1.53	0.056 / 0.0651	-	-	-	-
MW-3	09/28/2000	93.57	11.35	82.22	-	5.36	0.0217	0.171	0.476	0.896	0.035 / <0.020	-	-	-	-
MW-3	05/04/2001	93.57	12.84	80.73	-	5.58	0.0451	0.104	0.304	0.707	0.0703 / <0.005	-	-	-	-
MW-3	10/04/2001	93.57	13.39	80.18	-	6.57	0.0531	0.108	0.441	1.24	0.0596 / <0.050	-	-	-	-
MW-3	05/04/2002	93.57	13.32	80.25	-	4.27	0.0330	0.0626	0.337	0.641	0.0299 / <0.050	-	-	-	-
MW-3	09/22/2002	93.57	12.41	81.16	-	2.23	0.0129	0.0193	0.216	0.295	0.0171 / <0.025	-	-	-	-
MW-3	05/30/2003	93.58	13.61	79.97	-	1.80	0.009	0.002	0.140	0.160	<0.002	-	-	-	-
MW-3	10/02/2003	93.58	13.87	79.71	-	8.70 / 8.90	0.022 / 0.021	0.009 / 0.010	0.450 / 0.470	0.900 / 0.980	<0.002 / <0.002	-	-	-	-
MW-3	06/02/2004	93.58	13.37	80.21	-	2.80 / 2.70	0.018 / 0.015	<0.0005 / <0.0005	0.180 / 0.150	0.230 / 0.200	<0.002 / <0.002	-	-	-	-
MW-3	09/22/2004	93.58	13.79	79.79	-	4.70 / 4.00	0.073 / 0.065	0.008 / 0.007	0.270 / 0.230	0.380 / 0.310	<0.002 / <0.002	-	-	-	-
MW-3	05/11/2005	93.58	13.21	80.37	-	0.580 / 0.990	0.004 / 0.004	0.002 / 0.002	0.044 / 0.057	0.057 / 0.079	<0.002 / <0.002	-	-	-	-
MW-3	09/22/2005	93.58	13.05	80.53	-	6.00 / 5.60	0.030 / 0.029	0.110 / 0.110	0.310 / 0.300	0.660 / 0.630	<0.002 / <0.002	-	-	-	-
MW-3	05/09/2006	93.58	14.51	79.07	-	0.840	0.0047	0.0025	0.036	0.056	<0.020	<0.0005	<0.0005	-	-
MW-3	09/20/2006	93.58	13.93	79.65	-	1.30	0.013	0.0017	0.100	0.130	<0.020	-	-	-	-
MW-3	05/15/2007	93.58	14.23	79.35	-	0.20	0.002	<0.001	0.007	0.010	<0.003	-	-	-	-
MW-3	09/23/2007	93.58	14.32	79.26	-	0.20	0.003	<0.001	0.010	0.010	<0.003	-	-	-	-
MW-3	05/05/2008	93.58	14.28	79.30	-	0.444 / 1.510	0.00611 / 0.00884	0.00208 / 0.00384	0.0359 / 0.0786	0.0864 / 0.190	<0.002 / <0.002	-	-	-	-
MW-3	07/16/2008	93.58	14.27	79.31	0.095 / 0.20	0.9 / 0.8	0.006 / 0.006	<0.001 / <0.001	0.04 / 0.03	0.03 / 0.02	-	-	-	-	-
MW-3	06/16/2009	93.58	14.48	79.10	0.091 J / 0.072 J	0.250 / 0.250	0.0020 / 0.0020	<0.0005 / <0.0005	0.0077 / 0.0077	0.011 / 0.011	-	-	-	-	-
MW-3	08/27/2009	93.58	14.43	79.15	0.25 J / 0.12 J	0.32 / 0.43	0.0029 / 0.0034	<0.0005 / 0.0006 J	0.011 / 0.014	0.015 J / 0.021 J	-	-	-	-	-
MW-3	05/06/2010	93.58	14.63	78.95	0.13 J	0.030 J	<0.0005	<0.0005	0.0005 J	<0.0015	-	-	-	-	-
MW-3	08/05/2010	93.58	14.41	79.17	0.98 J / 1.1 J	0.014 J / 0.023 J	<0.0005 / <0.0005	<0.0005 / <0.0005	<0.0005 / <0.0005	<0.0015 / <0.0015	-	<0.0000095 / <0.0000096	<0.0015 / <0.0015	-	-
MW-3	05/19/2011	93.58	14.72	78.86	0.31 / 0.23 J	0.042 J / 0.040 J	<0.0005 / <0.0005	<0.0005 / <0.0005	<0.0005 / <0.0005	<0.0015 / <0.0015	-	-	-	-	-
MW-3	08/23/2011	93.58	14.41	79.17	0.14 J / 0.11 J	0.15 / 0.13	0.0011 J / 0.001 J	<0.0005 / <0.0005	0.0054 / 0.0049	0.0031 J / 0.0028 J	-	-	-	-	-
MW-3	05/23/2012	93.58	14.08	79.50	0.49 J / 0.50 J	1.7 / 1.8	0.0075 / 0.0072	0.0043 / 0.0042	0.087 / 0.087	0.18 / 0.17	-	-	-	-	-
MW-3	07/31/2012	93.58	13.85	79.73	0.20 J / 0.26	0.72 / 0.73	0.0065 / 0.0068	0.0008 J / 0.0009 J	0.031 / 0.033	0.021 / 0.023	-	-	-	-	-
MW-3	05/23/2013	93.58	13.58	80.00	0.47 J / 0.37 J	1.7 / 1.4	0.0044 / 0.0039	0.00066 J / 0.00063 J	0.10 / 0.11	0.040 / 0.037	-	-	<0.00022 / <0.00022	0.0015 / 0.0015	0.0030 / 0.0036
MW-3 ^{HS}	05/23/2013	93.58	13.58	80.00	0.55 J / 1.1 J	1.0 / 0.97	0.0084 / 0.0085	0.00029 J / 0.00028 J	0.028 / 0.028	0.050 / 0.050	-	-	<0.00022 / <0.00022	0.0016 / 0.0016	0.0020 / 0.0019

TABLE 1
 GROUNDWATER ANALYTICAL RESULTS
 CHEVRON-BRANDED SERVICE STATION 9-1356
 1465 NORTHERN LIGHTS BOULEVARD
 ANCHORAGE, ALASKA

Location	Date	TOC ft msl	DTW ftg	GWE ft msl	HYDROCARBONS		PRIMARY VOC'S				ADDITIONAL VOC'S					
					DRO mg/l	GRO mg/l	Benzene mg/l	Toluene mg/l	Ethyl-benzene mg/l	Total xylenes mg/l	MTBE mg/l	1,2-EDB mg/l	1,2-DCA mg/l	PCE mg/l	Chloroform mg/l	
ADEC Groundwater Cleanup Levels*					1.5	2.2	0.005	1.0	0.7	10	0.47	0.005	0.0005	0.005	0.14	
MW-3	09/17/2013	93.58	13.07	80.51	-	-	-	-	-	-	-	-	-	-	-	-
MW-3	09/18/2013	-	-	-	1.5 / 0.74	0.13 / 0.13	0.0013 / 0.0011	<0.00023 / <0.00023	0.0016 / 0.0013	<0.00072 / <0.00072	-	-	<0.00022 / <0.00022	0.00091 / 0.00087	0.0096 / 0.0097	-
MW-4	07/09/1999	94.66	15.01	79.65	-	<0.050	<0.0005	<0.0005	<0.0005	<0.0005	<0.0005	<0.002	-	-	-	-
MW-4	10/11/1999	94.66	14.31	80.35	-	<0.050	<0.0005	<0.0005	<0.0005	<0.0005	<0.0005	<0.005	-	-	-	-
MW-4	05/19/2000	94.66	13.22	81.44	-	0.867	0.0323	0.133	0.0162	0.110	<0.010	-	-	-	-	-
MW-4	09/28/2000	94.66	12.45	82.21	-	<2.50 / 5.65	0.366 / 0.382	0.338 / 1.65	0.0294 / 0.148	0.441 / 0.951	<0.050 / <0.100	-	-	-	-	-
MW-4	05/04/2001	94.66	13.78	80.88	-	0.190	0.00216	<0.0005	0.036	0.0256	<0.001	-	-	-	-	-
MW-4	10/04/2001	94.66	15.31	79.35	-	<0.050 / <0.050	0.000348 / 0.000359	<0.0005 / <0.0005	0.00491 / 0.00581	0.00275 / 0.00366	<0.001 / <0.001	-	-	-	-	-
MW-4	05/04/2002	94.66	14.20	80.46	-	<0.050	0.000209	0.000601	<0.0005	<0.0010	<0.001	-	-	-	-	-
MW-4	09/22/2002	94.66	13.19	81.47	-	<0.050 / <0.050	<0.0002 / <0.0002	<0.0005 / <0.0005	<0.0005 / <0.0005	<0.0010 / <0.0010	<0.001 / <0.001	-	-	-	-	-
MW-4	05/30/2003	94.68	14.59	80.09	-	<0.010	<0.0005	<0.0005	<0.0005	<0.0005	<0.002	-	-	-	-	-
MW-4	10/02/2003	94.68	14.84	79.84	-	-	-	-	-	-	-	-	-	-	-	-
MW-4	06/02/2004	94.68	14.52	80.16	-	-	-	-	-	-	-	-	-	-	-	-
MW-4	09/22/2004	94.68	14.35	80.33	-	-	-	-	-	-	-	-	-	-	-	-
MW-4	05/11/2005	94.68	14.28	80.40	-	-	-	-	-	-	-	-	-	-	-	-
MW-4	09/22/2005	94.68	13.81	80.87	-	-	-	-	-	-	-	-	-	-	-	-
MW-4	05/09/2006	94.68	15.51	79.17	-	-	-	-	-	-	-	-	-	-	-	-
MW-4	09/20/2006	94.68	14.94	79.74	-	-	-	-	-	-	-	-	-	-	-	-
MW-4	05/15/2007	94.68	15.42	79.26	-	-	-	-	-	-	-	-	-	-	-	-
MW-4	09/23/2007	94.68	15.72	78.96	-	-	-	-	-	-	-	-	-	-	-	-
MW-4	05/05/2008	94.68	15.37	79.31	-	-	-	-	-	-	-	-	-	-	-	-
MW-4	07/16/2008	94.68	15.31	79.37	-	-	-	-	-	-	-	-	-	-	-	-
MW-4	06/16/2009	94.68	15.52	79.16	-	-	-	-	-	-	-	-	-	-	-	-
MW-4	08/27/2009	94.68	15.48	79.20	-	-	-	-	-	-	-	-	-	-	-	-
MW-4	05/06/2010	94.68	15.61	79.07	-	-	-	-	-	-	-	-	-	-	-	-
MW-4	05/19/2011	94.68	15.72	78.96	-	-	-	-	-	-	-	-	-	-	-	-
MW-4	08/23/2011	94.68	15.40	79.28	-	-	-	-	-	-	-	-	-	-	-	-
MW-4	05/23/2012	94.68	15.09	79.59	-	-	-	-	-	-	-	-	-	-	-	-
MW-4	07/31/2012	94.68	14.87	79.81	-	-	-	-	-	-	-	-	-	-	-	-
MW-4	05/23/2013	94.68	14.62	80.06	-	-	-	-	-	-	-	-	<0.00022	0.00096	0.016	
MW-4 ^{HS}	05/23/2013	94.68	14.62	80.06	-	-	-	-	-	-	-	-	<0.00022	0.0011	0.015	
MW-4	09/17/2013	94.68	14.12	80.56	-	-	-	-	-	-	-	-	-	-	-	-
MW-4	09/18/2013	-	-	-	-	-	<0.00024	<0.00023	<0.00024	<0.00072	-	-	<0.00022	0.00044	0.021	
MW-5	10/04/2001	-	13.36	-	-	0.0832	0.00391	<0.0005	<0.0005	<0.0010	0.00703 / <0.005	-	-	-	-	-
MW-5	05/04/2002	-	13.30	-	-	0.403	0.00442	0.000837	0.00153	<0.0010	0.0115 / <0.005	-	-	-	-	-
MW-5	09/22/2002	-	12.25	-	-	0.367	0.00446	0.000607	0.0026	0.00191	0.00913 / <0.005	-	-	-	-	-
MW-5	05/30/2003	93.37	13.53	79.84	-	0.200	0.002	<0.0005	0.002	<0.0005	<0.002	-	-	-	-	-
MW-5	10/02/2003	93.37	13.79	79.58	-	0.300	0.003	<0.0005	0.005	<0.0005	<0.002	-	-	-	-	-
MW-5	06/02/2004	93.37	13.50	79.87	-	0.260	0.0006	<0.0005	<0.0005	<0.0005	<0.002	-	-	-	-	-
MW-5	09/22/2004	93.37	13.72	79.65	-	0.099	<0.0005	<0.0005	<0.0005	<0.0005	<0.002	-	-	-	-	-
MW-5	05/11/2005	93.37	13.24	80.13	-	0.048	<0.0005	<0.0005	<0.0005	<0.0005	<0.002	-	-	-	-	-
MW-5	09/22/2005	93.37	13.06	80.31	-	0.140	0.0006	<0.0005	<0.0005	<0.0005	<0.002	-	-	-	-	-
MW-5	05/09/2006	93.37	14.38	78.99	-	0.013 / <0.010	<0.0005 / <0.0005	<0.0005 / <0.0005	<0.0005 / <0.0005	<0.0015 / <0.0015	<0.0025 / <0.0025	-	-	-	-	-
MW-5	09/20/2006	93.37	13.77	79.60	-	0.110	0.0023	<0.0005	0.0028	<0.0015	<0.0025	-	-	-	-	-
MW-5	05/15/2007	93.37	14.31	79.06	-	0.090	0.003	<0.0010	0.004	<0.0020	<0.010	-	-	-	-	-
MW-5	09/23/2007	93.37	14.17	79.20	-	0.020	<0.0010	<0.0010	0.001	<0.0020	<0.003	-	-	-	-	-

TABLE 1

GROUNDWATER ANALYTICAL RESULTS
 CHEVRON-BRANDED SERVICE STATION 9-1356
 1465 NORTHERN LIGHTS BOULEVARD
 ANCHORAGE, ALASKA

Location	Date	TOC Units	DTW ft msl	GWE ft msl	HYDROCARBONS		PRIMARY VOCs				ADDITIONAL VOC'S					
					DRO mg/l	GRO mg/l	Benzene mg/l	Toluene mg/l	Ethyl-benzene mg/l	Total xylenes mg/l	MTBE mg/l	1,2-EDB mg/l	1,2-DCA mg/l	PCE mg/l	Chloroform mg/l	
ADEC Groundwater Cleanup Levels*					1.5	2.2	0.005	1.0	0.7	10	0.47	0.005	0.00005	0.005	0.14	
MW-5	05/05/2008	-	-	-	-	-	-	-	-	-	-	-	-	-	-	
MW-6	10/04/2001	-	13.11	-	-	<0.050	0.000756	<0.0005	<0.0005	<0.0005	<0.001	<0.001	-	-	-	
MW-6	05/04/2002	-	13.71	-	-	<0.050	0.000367	0.000545	<0.0005	<0.0005	<0.001	<0.001	-	-	-	
MW-6	09/22/2002	-	12.22	-	-	<0.050	0.000271	<0.0005	<0.0005	<0.0005	<0.001	<0.001	-	-	-	
MW-6	05/30/2003	92.89	13.29	79.60	-	0.014	<0.0005	<0.0005	<0.0005	<0.0005	<0.0005	<0.002	-	-	-	
MW-6	10/02/2003	92.89	13.47	79.42	-	0.017	0.0009	<0.0005	<0.0005	<0.0005	<0.0005	<0.002	-	-	-	
MW-6	06/02/2004	92.89	13.27	79.62	-	0.015	<0.0005	<0.0005	<0.0005	<0.0005	<0.0005	<0.002	-	-	-	
MW-6	09/22/2004	92.89	13.36	79.53	-	0.010	0.0007	<0.0005	<0.0005	<0.0005	<0.0005	<0.002	-	-	-	
MW-6	05/11/2005	92.89	12.98	79.91	-	0.013	<0.0005	<0.0005	<0.0005	<0.0005	<0.0005	<0.002	-	-	-	
MW-6	09/22/2005	92.89	12.69	80.20	-	0.015	<0.0005	<0.0005	<0.0005	<0.0005	<0.0005	<0.002	-	-	-	
MW-6	05/09/2006	92.89	14.14	78.75	-	<0.010	<0.0005	<0.0005	<0.0005	<0.0005	<0.0015	<0.002	-	-	-	
MW-6	09/20/2006	92.89	13.45	79.44	-	<0.010	<0.0005	<0.0005	<0.0005	<0.0005	<0.0015	<0.0025	-	-	-	
MW-6	05/15/2007	92.89	13.98	78.91	-	<0.010	<0.0010	<0.0010	<0.0010	<0.0010	<0.0020	<0.0025	-	-	-	
MW-6	09/23/2007	92.89	13.84	79.05	-	0.020	<0.0010	<0.0010	<0.0010	<0.0010	<0.0020	<0.003	-	-	-	
MW-6	05/05/2008	92.89	13.89	79.00	-	<0.05	0.00063	<0.0005	<0.0005	<0.0005	<0.0015	<0.002	-	-	-	
MW-6	07/16/2008	92.89	13.82	79.07	0.087	0.06	0.002	<0.001	<0.001	<0.001	<0.002	-	-	-	-	
MW-6	06/16/2009	92.89	14.02	78.87	<0.050	0.016 J	0.0016 J	<0.0005	<0.0005	<0.0005	<0.0015	-	-	-	-	
MW-6	08/27/2009	92.89	13.99	78.90	<0.050	0.012 J	0.0007 J	<0.0005	<0.0005	<0.0005	<0.0015	-	-	-	-	
MW-6	05/06/2010	92.89	14.25	78.64	<0.50	<0.010	<0.0005	<0.0005	<0.0005	<0.0005	<0.0015	-	-	-	-	
MW-6	08/05/2010	92.89	13.98	78.91	0.10 J	0.058 J	0.0027	<0.0005	<0.0005	<0.0005	<0.0015	-	-	-	-	
MW-6	05/19/2011	92.89	14.34	78.55	0.10 J	0.012 J	<0.0005	<0.0005	<0.0005	<0.0005	<0.0015	-	-	-	-	
MW-6	08/23/2011	92.89	14.02	78.87	<0.050	<0.010	0.0006 J	<0.0005	<0.0005	<0.0005	<0.0015	-	-	-	-	
MW-6	05/23/2012	92.89	13.49	79.40	<0.048 UJ	0.037 J	0.0006 J	<0.0005	<0.0005	<0.0005	<0.0015	-	-	-	-	
MW-6	07/31/2012	92.89	13.42	79.47	<0.051	0.013 J	0.0011 J	<0.0005	<0.0005	<0.0005	<0.0015	-	-	-	-	
MW-6	05/23/2013	92.89	13.21	79.68	<0.050	<0.050	<0.00024	<0.00023	<0.00024	<0.00024	<0.00072	-	-	<0.00022	0.019	0.0029
MW-6 ^{HS}	05/23/2013	92.89	13.21	79.68	0.97	<0.050	<0.00024	<0.00023	<0.00024	<0.00024	<0.00072	-	-	<0.00022	0.020	0.0025
MW-6	09/17/2013	92.89	12.66	80.23	-	-	-	-	-	-	-	-	-	-	-	-
MW-6	09/18/2013	-	-	-	0.71	<0.050	0.00032 J	<0.00023	<0.00024	<0.00024	<0.00072	-	-	<0.00022	0.023	0.00061 J
MW-7	09/20/2006	98.28	12.27	86.01	-	<0.010 / <0.010	<0.0005 / <0.0005	<0.0005 / <0.0005	<0.0005 / <0.0005	<0.0015 / <0.0015	<0.0025 / <0.0025	-	-	-	-	-
MW-7	05/15/2007	98.28	12.81	85.47	-	<0.010 / <0.010	<0.0005 / <0.0010	<0.0010 / <0.0010	<0.0010 / <0.0010	<0.0020 / <0.0020	<0.010 / <0.003	-	-	-	-	-
MW-7	09/23/2007	98.28	12.66	85.62	-	<0.010	<0.0010	<0.0010	<0.0010	<0.0020	<0.003	-	-	-	-	-
MW-7	05/05/2008	98.28	12.74	85.54	-	<0.050	<0.0005	<0.0005	<0.0005	<0.0015	<0.002	-	-	-	-	-
MW-7	07/16/2008	98.28	12.64	85.64	0.049	<0.01	<0.001	<0.001	<0.001	<0.002	-	-	-	-	-	-
MW-7	06/16/2009	98.28	12.85	85.43	0.069 J	0.046 J	0.0029	<0.0005	<0.0005	<0.0015	-	-	-	-	-	-
MW-7	08/27/2009	98.28	12.81	85.47	0.053 J	0.013 J	<0.0005	<0.0005	<0.0005	<0.0015	-	-	-	-	-	-
MW-7	05/23/2013	98.28	12.12	86.16	0.070 J	<0.050	<0.00024	<0.00023	<0.00024	<0.00072	-	-	0.00037 J	<0.00029	<0.00027	<0.00027
MW-7 ^{HS}	05/23/2013	98.28	12.12	86.16	1.4	<0.050	<0.00024	<0.00023	<0.00024	<0.00072	-	-	0.00049 J	<0.00029	<0.00027	<0.00027
MW-7	09/17/2013	98.28	11.57	86.71	-	-	-	-	-	-	-	-	-	-	-	-
MW-7	09/18/2013	-	-	-	1.3	<0.050	<0.00024	<0.00023	<0.00024	<0.00072	-	-	0.00086 J	<0.00029	<0.00027	<0.00027
MW-9	07/31/2012	-	16.03	-	<0.051	<0.010	<0.0005	<0.0005	<0.0005	<0.0015	-	-	<0.0005	0.001 J	0.018	0.018
MW-9	05/23/2013	-	15.72	-	0.10 J	<0.050	<0.00024	<0.00023	<0.00024	<0.00072	-	-	<0.00022	0.0011	0.017	0.017
MW-9 ^{HS}	05/23/2013	-	15.72	-	0.50 J	<0.050	<0.00024	<0.00023	<0.00024	<0.00072	-	-	<0.00022	0.0010	0.018	0.018
MW-9	09/17/2013	-	15.23	-	-	-	-	-	-	-	-	-	-	-	-	-
MW-9	09/18/2013	-	-	-	0.41 J	<0.050	<0.00024	<0.00023	<0.00024	<0.00072	-	-	<0.00022	0.0013	0.017	0.017

TABLE 1

GROUNDWATER ANALYTICAL RESULTS
 CHEVRON-BRANDED SERVICE STATION 9-1356
 1465 NORTHERN LIGHTS BOULEVARD
 ANCHORAGE, ALASKA

Location	Date	TOC	DTW	GWE	HYDROCARBONS		PRIMARY VOCS					ADDITIONAL VOC'S			
					DRO	GRO	Benzene	Toluene	Ethyl-benzene	Total xylenes	MTBE	1,2-EDB	1,2-DCA	PCE	Chloroform
	Units	ft msl	fbg	ft msl	mg/l	mg/l	mg/l	mg/l	mg/l	mg/l	mg/l	mg/l	mg/l	mg/l	mg/l
ADEC Groundwater Cleanup Levels*					1.5	2.2	0.005	1.0	0.7	10	0.47	0.005	0.00005	0.005	0.14
Trip Blank	10/11/1999	-	-	-	-	<0.050	<0.0005	<0.0005	<0.0005	<0.0005	<0.005	-	-	-	-
Trip Blank	05/19/2000	-	-	-	-	<0.080	<0.0005	<0.0005	<0.0005	<0.0010	<0.002	-	-	-	-
Trip Blank	09/28/2000	-	-	-	-	<0.050	<0.0002	0.000899	<0.0005	<0.0010	<0.001	-	-	-	-
Trip Blank	05/04/2001	-	-	-	-	<0.050	-	-	-	-	-	-	-	-	-
Trip Blank	10/04/2001	-	-	-	-	<0.050	<0.0002	<0.0005	<0.0005	<0.0010	<0.001	-	-	-	-
Trip Blank	05/04/2002	-	-	-	-	<0.050	0.000361	<0.0005	<0.0005	<0.0010	<0.001	-	-	-	-
Trip Blank	05/05/2008	-	-	-	-	<0.05	<0.0005	<0.0005	<0.0005	<0.0015	<0.002	-	-	-	-
Trip Blank	07/16/2008	-	-	-	-	<0.01	<0.001	<0.001	<0.001	<0.002	-	-	-	-	-
Trip Blank	06/10/2009	-	-	-	-	<0.010	<0.0005	<0.0005	<0.0005	<0.0015	-	-	-	-	-
Trip Blank	08/19/2009	-	-	-	-	<0.010	<0.0005	<0.0005	<0.0005	<0.0015	-	-	-	-	-
Trip Blank	05/06/2010	-	-	-	-	<0.010	<0.0005	<0.0005	<0.0005	<0.0015	-	-	-	-	-
Trip Blank	08/05/2010	-	-	-	-	<0.010	<0.0005	<0.0005	<0.0005	<0.0015	-	-	-	-	-
Trip Blank	05/19/2011	-	-	-	-	<0.010	<0.0005	<0.0005	<0.0005	<0.0015	-	-	-	-	-
Trip Blank	08/23/2011	-	-	-	-	<0.010	<0.0005	<0.0005	<0.0005	<0.0015	-	-	-	-	-
Trip Blank	07/31/2012	-	-	-	-	<0.010	<0.0005	<0.0005	<0.0005	<0.0015	-	-	-	-	-
Trip Blank-1	05/23/2013	-	-	-	-	<0.050	<0.00024	<0.00023	<0.00024	<0.00072	-	-	<0.0005	<0.0008	<0.0008
Trip Blank-2	05/23/2013	-	-	-	-	<0.050	<0.00024	<0.00023	<0.00024	<0.00072	-	-	<0.00022	<0.00029	<0.00027
Trip B	09/18/2013	-	-	-	-	<0.050	<0.00024	<0.00023	<0.00024	<0.00072	-	-	<0.00022	<0.00029	<0.00027

Notes and Abbreviations

VOCS = Volatile organic compounds
 TOC = Top of casing
 DTW = Depth to water
 GWE = Groundwater elevation
 DRO = Diesel range organics by Alaska Series Method AK102
 GRO = Gasoline range organics by Alaska Series Method AK101
 Benzene, toluene, ethylbenzene, and total xylenes by Environmental Protection Agency (EPA) Method 8021B, 8260B, or SW-846 8021B
 Total Xylenes = Sum of m-, o-, and p-xylenes
 MTBE = Methyl tertiary-butyl ether
 PCE = Tetrachloroethene
 ft msl = Feet above mean sea level
 fbg = Feet below grade
 mg/l = Milligrams per liter
 ADEC = Alaska Department of Environmental Conservation
 * = Levels established in ADEC Table C Groundwater Cleanup Levels (18 AAC 75.345)
 Groundwater data from 1999 through 2007 provided by Gettler-Ryan, Inc.
 - = Not measured/not analyzed
 <x = Constituent not detected above x milligrams per liter
 x / y = Sample results / blind duplicate results
BOLD = Indicates concentration above the ADEC Table C Groundwater Cleanup Level
 J = Estimated value
 HS = collected via hydrosleeve

Appendix A

Site Photos



Photo 1 – View of Site facing west



Photo 2 – View of Site facing north

SITE PHOTOGRAPHS





Photo 3 – View of Site facing west

SITE PHOTOGRAPHS





Photo 4 – View of Site facing east



Photo 5 – View of Site facing south

SITE PHOTOGRAPHS



Appendix B

Environmental History

Environmental History

Former Chevron Service Station 90430

1992 Site Assessment

Shannon and Wilson, Incorporated (Shannon and Wilson) installed groundwater monitoring wells MW-3 through MW-7. Details are presented in Shannon and Wilson's September 1992 *Environmental Site Assessment*.

1995 UST Removal

Five USTs and associated product lines were replaced, a used oil and heating oil UST were removed, and a soil vapor extraction system was installed. Six soil vapor extraction (SVE) and air sparge (AS) wells were installed. Details are presented in Groundwater Technology, Incorporated's September 27, 1995 *Underground Storage Tank Removal Site Assessment*.

1999 Well Installation

SECOR International, Incorporated (SECOR) installed dual completion wells VEW-2/AS-3, VEW-3/AS-4 and VEW-4/AS-5 and groundwater monitoring wells MW-9 through MW-11. Details are presented in SECOR's December 9, 1999 *Groundwater Monitoring and SVE/AS Well Installation Report*.

2000 UST Removal

SECOR advanced three soil borings and installed groundwater monitoring wells MW-12 and MW-13. Three USTs, associated product lines, five dispensers, and the station building with an oil/water separator and hoists were removed during station decommissioning. Details are presented in SECOR's June 20, 2003 *NAPL Plume Delineation Report*.

2002 Well Installation

SECOR installed SVE wells VEW-5 through VEW-10. Details are presented in SECOR's September 27, 2002 *Site Assessment*.

2003 Plume Delineation

SECOR advanced twelve borings to assess the horizontal extent of LNAPL in the subsurface. No LNAPL was measured in any boring. Details are presented in SECOR's June 20, 2003 *NAPL Plume Delineation Report*.

2006 Subsurface Investigation

Arcadis installed SVE wells VEW-11 through VEW-13, AS wells AS-1R, AS-2R, and AS-6 through AS-26, monitoring wells MW-4R, MW-5R, and MW-14 through MW-17, and advanced soil boring B-101 during remediation system upgrades. Details are presented in Arcadis' December 22, 2006 *Remedial System Upgrade Report*.

2010 Subsurface Investigation

CRA and Discovery Drilling, Inc. advanced soil borings SB10-1 through SB10-10 and installed AS wells AS-25R and AS-27. Details are presented in CRA's May 25, 2011 *Subsurface Investigation Report*.

Appendix C

Historical Soil Analytical Results

Conestoga-Rovers & Associates

Soil Analytical Results for GRO, BTEX and PCE

Chevron-branded Service Station 91356, 1465 Northern Lights Boulevard, Anchorage, Alaska

Sample ID	Date Sampled	Sample Depth (fbg)	GRO	Benzene	Toluene	Ethylbenzene	Xylenes	Tetrachloroethene
SB10-1-8.0	8/5/2010	8.0	<0.6	<0.0005 / <0.030	<0.001 / <0.061	<0.001 / <0.061	<0.001 / <0.061	0.009 / 0.063 J
DUP-1-080510	8/5/2010	8.0	<0.5	<0.0005 / <0.029	<0.001 / <0.057	<0.001 / <0.057	<0.001 / <0.057	0.011 / 0.060 J
SB10-2-071510	7/15/2010	6.0	--	0.01	0.04	0.03	0.08	--
SB10-3-071410	7/14/2010	5.0	0.7 J	0.01 J	0.06	0.01 J	0.07	--
DUP-1-071410	7/14/2010	5.0	0.8 J	0.01 J	0.05	0.02 J	0.08	--
SB10-4-5-071410	7/14/2010	5.0	--	<0.006	0.02 J	0.009 J	0.06 J	--
SB10-4-072010-14	7/20/2010	14.0	--	0.009 J	0.08	0.02	0.09	--
SB10-5-072010-16	7/20/2010	16.0	360	0.4	1	1.2	4.1	--
SB10-5-072010-18	7/20/2010	18.0	49	0.5	3.1	1.1	5.3	--
SB10-6-072010-16	7/20/2010	16.0	1,300	1.6	9.1	26	95	--
SB10-6-072010-18	7/20/2010	18.0	2.7 J	0.03	0.06	0.09	0.2	--
SB10-7-071510	7/15/2010	6.0	--	<0.005	<0.005	<0.005	<0.02	--
SB10-8-072010-15	7/20/2010	15.0	1.4 J	0.008 J	0.07	0.01 J	0.2	--
DUP-2-072010	7/20/2010	15.0	2.0 J	0.009 J	0.06	0.01 J	0.2	--
TB-1-080510	8/5/2010	--	<0.5	<0.0005	<0.001	<0.001	<0.001	<0.001
TRIP_BLANK-1-072010	7/20/2010	--	<0.5	<0.005	<0.005	<0.005	<0.02	--
Trip_Blank-071410**	7/7/2010	--	<0.010	<0.0005	<0.0005	<0.0005	<0.0015	--
TRIP_BLANK-2-072010**	7/20/2010	--	<0.010	<0.0005	<0.0005	<0.0005	<0.0015	--
EB-2-071410**	7/14/2010	--	<0.010	<0.0005	<0.0005	<0.0005	<0.0015	--
EB-1-072010**	7/20/2010	--	<0.010	<0.0005	<0.0005	<0.0005	<0.0015	--
EB-1-080510**	8/5/2010	--	<0.010	<0.0005	<0.0005	<0.0005	<0.0015	--
ADEC Method II Cleanup Levels*			300	0.025	6.5	6.9	63	0.024

Abbreviations and Methods:

GRO = Gasoline range organics by Alaska Series Method AK101

BTEX = Benzene, toluene, ethylbenzene, and xylenes by EPA Method 8021B

fbg = Feet below grade

mg/kg = Milligrams per kilogram

-- = Not analyzed / applicable

J = Estimated value. Analyte detected at a level less than the Reporting Limit (RL) and greater than or equal to the Method Detection Limit (MDL).

<x = Constituent not detected above x milligrams per kilogram

ADEC = Alaska Department of Environmental Conservation

* = Levels established in ADEC Method II - Soil Cleanup Levels, Tables B1 and B2, Under 40-Inch Zone, Migration to Groundwater, (ADEC, 18 AAC 75.341)

** = Units in mg/l (milligrams per liter)

EPA = Environmental Protection Agency