



2100.26.007
ADEC File No.

Hazard ID No.

DEPT. OF ENVIRONMENTAL
CONSERVATION

JUN 20 2013

RECEIVED

ARCADIS
1100 Olive Way
Suite 800
Seattle
Washington 98101
Tel 206.325.5254
Fax 206.325.8218
www.arcadis-us.com

Mr. Robert Weimer
Alaska Department of Environmental Conservation
555 Cordova Street
Anchorage, Alaska 99501

Subject:

**Request to Remove Remediation System
Chevron Facility 96097
303 West Fireweed Lane
Anchorage, Alaska
ADEC File Number: 2100.26.007**

Environment

Dear Mr. Weimer:

Date:
June 17, 2013

On behalf of Chevron Environmental Management Company (Chevron), ARCADIS U.S., Inc. (ARCADIS) is submitting this request for the removal of the remediation system and fencing enclosure at Chevron Facility 96097(the site) located at 303 West Fireweed Lane in Anchorage, Alaska. The site location and surrounding area are shown on **Figure 1**. Site details are shown on **Figure 2**. The remediation equipment associated with the site consists of a soil vapor extraction (SVE) system.

Contact:
Greg Montgomery

Phone:
206.726.4742

Email:
Gregory.Montgomery@
arcadis-us.com

Operation of the original SVE system was initiated at the site in June 1996 to remediate areas of petroleum impact. The SVE system was initially comprised of two vertical SVE wells (MW-2 and MW-5), and three horizontal wells surrounding the former pump islands and underground storage tanks (USTs).

Our ref:
B0045510

At the request of the property owner, the SVE unit was relocated in July 2005 from the central portion of the site near well MW-5, to the northwest corner of the site. The system continued extraction from the two vertical SVE wells from August 2005 through March 2006 when electrical and safety issues led to system shutdown. Replacement of the SVE blower and construction of a new remediation compound and piping manifold occurred during fourth quarter 2006.

The system remained inactive throughout 2007 due to the construction of a new hotel onsite. The hotel footprint encompasses the eastern half of the site and required abandonment of several monitoring wells and system piping. Pursuant to ADEC approval, monitoring wells MW-1, MW-2, MW-3 and MW-11 were abandoned in May 2007. Electrical service was relocated to run in the extraction piping trench leading from well MW-5 to the system compound. System re-start occurred on December 31, 2007 and extracted vapor from MW-5. In late January 2008, the

Imagine the result

blower was shut down due to power supply and blower motor issues. SVE blower motor replacement was performed in June 2008. The system was operational in first quarter 2009 and extracted vapors from monitoring well MW-5 continued until the planned shutdown date of January 14, 2009. Analytical results from the confirmation effluent air sample indicated that benzene, toluene, ethylbenzene, and total xylenes (BTEX) and gasoline range organics (GRO) concentrations were below laboratory detection limits (ARCADIS 2009).

The SVE system was permanently shut down January 2009. Approximately 7,453 lbs of GRO were removed by the system between 1996 and 2005. GRO mass removal was not documented after 2005, there was difficulty with the electrical system, and the system was not operating consistently. The system was shut down as planned on January 14, 2009 to evaluate rebound in groundwater concentrations.

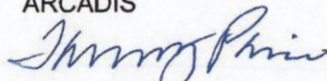
Following the shutdown of the SVE system in January 2009, concentrations of GRO, diesel range organics (DRO), and BTEX have continued to experience decreasing trends. The second semi-annual 2012 groundwater monitoring event was conducted on September 18, 2012 (ARCADIS 2013). Current and historical analytical results do not indicate rebound is occurring. Groundwater elevations versus analytical concentrations are included in **Graphs 1 through 12**.

Based on the lack of rebound after the system was shut off, and the decreasing concentration trends observed in the monitoring wells, ARCADIS requests approval to remove the remediation system. ARCADIS will continue to monitor groundwater concentrations on and offsite.

Should you have any questions regarding the environmental work outlined above, please contact Gregory Montgomery, ARCADIS project manager at 206.726.4742 or via email at Gregory.Montgomery@arcadis-us.com. Thank you.

Sincerely,

ARCADIS



Tammy Parise
Environmental Scientist II

Enclosures:

Figure 1 Site Location Map
Figure 2 Site Map

Graph 1 Monitoring Well MW-5 Historical Groundwater Elevation and Analytical Data -GRO and DRO

Graph 2 Monitoring Well MW-5 Historical Groundwater Elevation and Analytical Data -BTEX

Graph 3 Monitoring Well MW-7 Historical Groundwater Elevation and Analytical Data - GRO and DRO

Graph 4 Monitoring Well MW-7 Historical Groundwater Elevation and Analytical Data - BTEX

Graph 5 Monitoring Well MW-8 Historical Groundwater Elevation and Analytical Data -GRO and DRO

Graph 6 Monitoring Well MW-8 Historical Groundwater Elevation and Analytical Data -BTEX

Graph 7 Monitoring Well MW-9 Historical Groundwater Elevation and Analytical Data – GRO and DRO

Graph 8 Monitoring Well MW-9 Historical Groundwater Elevation and Analytical Data – BTEX

Graph 9 Monitoring Well MW-12 Historical Groundwater Elevation and Analytical Data – GRO and DRO

Graph 10 Monitoring Well MW-12 Historical Groundwater Elevation and Analytical Data – BTEX

Graph 11 Monitoring Well MW-14 Historical Groundwater Elevation and Analytical Data – GRO and DRO

Graph 12 Monitoring Well MW-14 Historical Groundwater Elevation and Analytical Data – BTEX

References:

ARCADIS

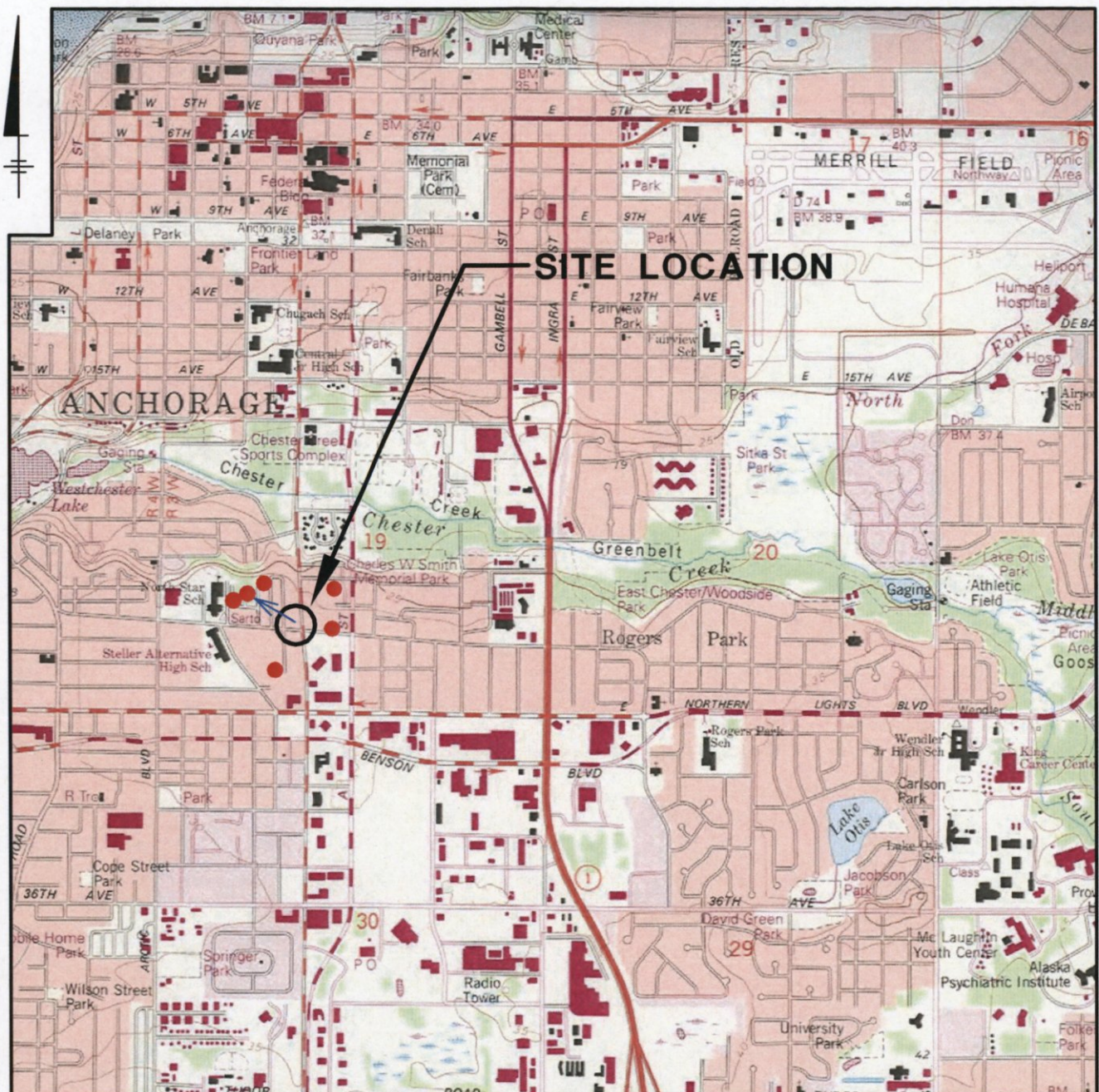
Robert Weimer
June 17, 2013

ARCADIS 2013. *Second Semi-Annual 2012 Groundwater Monitoring Report, Former Chevron Facility 96097.* February 14, 2013.

ARCADIS 2009. *First Quarter 2009 Remediation System Status Report, Former Chevron Facility 96097.* April 17, 2009.

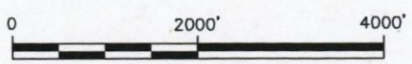
Copies:

Mr. Tom Bauhs, Chevron
File



SOURCE: USGS 7.5 MINUTE TOPOGRAPHIC QUADRANGLE: ANCHORAGE (A-8) NW, AK., 1979 (REVISED: 1994), ANCHORAGE BOROUGH, SECTION: 19, TOWNSHIP: 13N, RANGE: 3W

- LEGEND**
- POTABLE WELLS
 - ← GROUNDWATER FLOW DIRECTION



APPROXIMATE GRAPHIC SCALE

FORMER CHEVRON FACILITY #96097
 303 WEST FIREWEED LANE, ANCHORAGE, ALASKA
 FIRST QUARTER 2009 OPERATIONS AND MAINTENANCE REPORT

SITE LOCATION MAP



CITY: TAMPA DIV/GROUP: 85 DB: JAR LD: JAR AM: PD: TM: TR: LYRONM=OFF=REF
 INYR_200908045910000100007465100010001.dwg LAYOUT: 1 SAVED: 10/31/2009 7:37 AM ACADVER: 17.0S (LMS TEC-4) PAGESETUP: --- PLOTSTYLETABLE: PLT1000.ctb PLOTTED: 12/1/2008 2:48 PM BY: RICHARDS, JM
 PROJECT NAME: ---
 ALASKA.BGP ANCHORAGE.BGP
 XREFS:

CITY: (Read) DIV: (Group) (Read) DB: (Read) LD: (Opt) PIC: (Opt) PM: (Read) TM: (Opt) LY: (Option) OFF: (Ref)
 BY: 20080604 05:10:00 10:00:00 07:45:00 08:00:00 AM ACADVER: 17.05 (LMS TECH) PAGESETUP: --- PLOTSTYLETABLE: PLT: ALL.CTB PLOTTED: 12/17/2008 2:49 PM BY: RICHARDS, JIM
 XREFS: PROJECTNAME: ---



EUREKA STREET

MW-12

ALLEY

MW-8

D STREET

APPROXIMATE LOCATION BUILDING FOOTPRINT (SOCKEY INN)

REMEDATION COMPOUND

GRAVEL PAD

SB-1

MW-15

SB-2

AC PAVEMENT

MW-14

MW-7

MW-10

MW-1

MW-16

SB-3

MW-9

MW-5

FORMER FUEL USTS

SV-1

MW-2

MW-13

MW-17

SB-5

FORMER STATION BUILDING

FORMER PUMP ISLANDS

MW-3*

SB-4

REILLY'S BAR

FORMER WASTE OIL UST

FORMER PUMP ISLAND

MW-4

APPROXIMATE LOCATION OF TWO TANKER TRUCK VESSELS

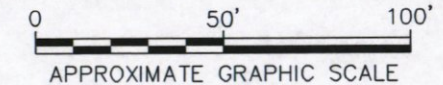
ELECTRIC METER

FIREWEED LANE

LEGEND

- MONITORING WELL
- MONITORING/VAPOR EXTRACTION WELL
- * LOCATION IS APPROXIMATE
- ABANDONED SOIL VAPOR SAMPLING WELL
- ABANDONED MONITORING WELL
- ELECTRICAL SERVICE LINE
- SOIL BORING
- SVE CONVEYANCE PIPING

NOTE: LOCATION OF FORMER FEATURES ARE APPROXIMATE.

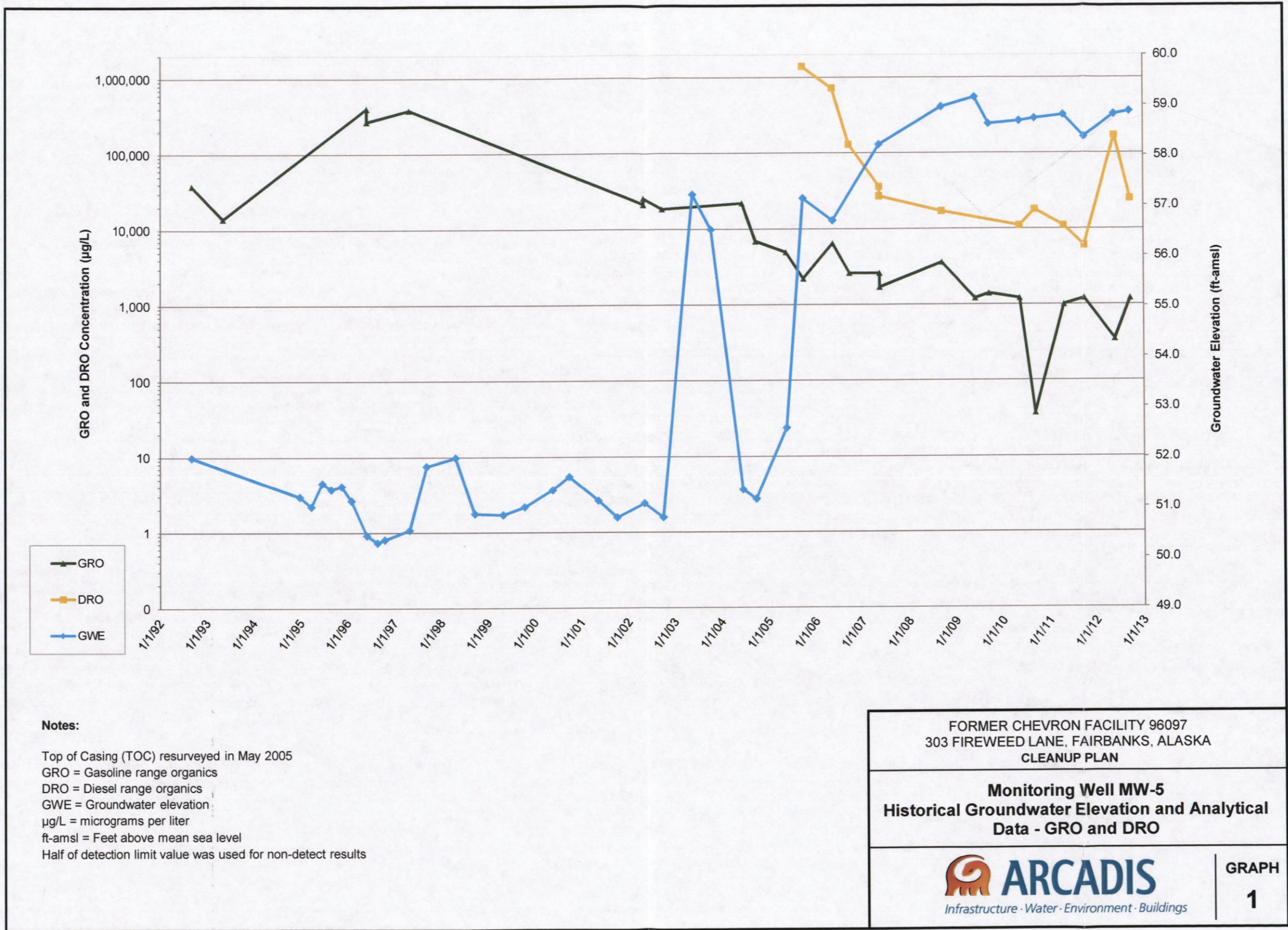


FORMER CHEVRON FACILITY #96097
 303 WEST FIREWEED LANE, ANCHORAGE, ALASKA
 FIRST QUARTER 2009 OPERATIONS AND MAINTENANCE REPORT

SITE MAP


SOURCE: Base map 'SITE PLAN' (Job #77CH.96097.05.0270) provided by SECOR, 3017 Kilgore Rd., Rancho Cordova, CA, (916) 861-0400. Map drawn full scale, map date June, 16, 2005. Site map updated from survey provided by McClane Consulting (907) 283-4218, Date 8/29/2008.

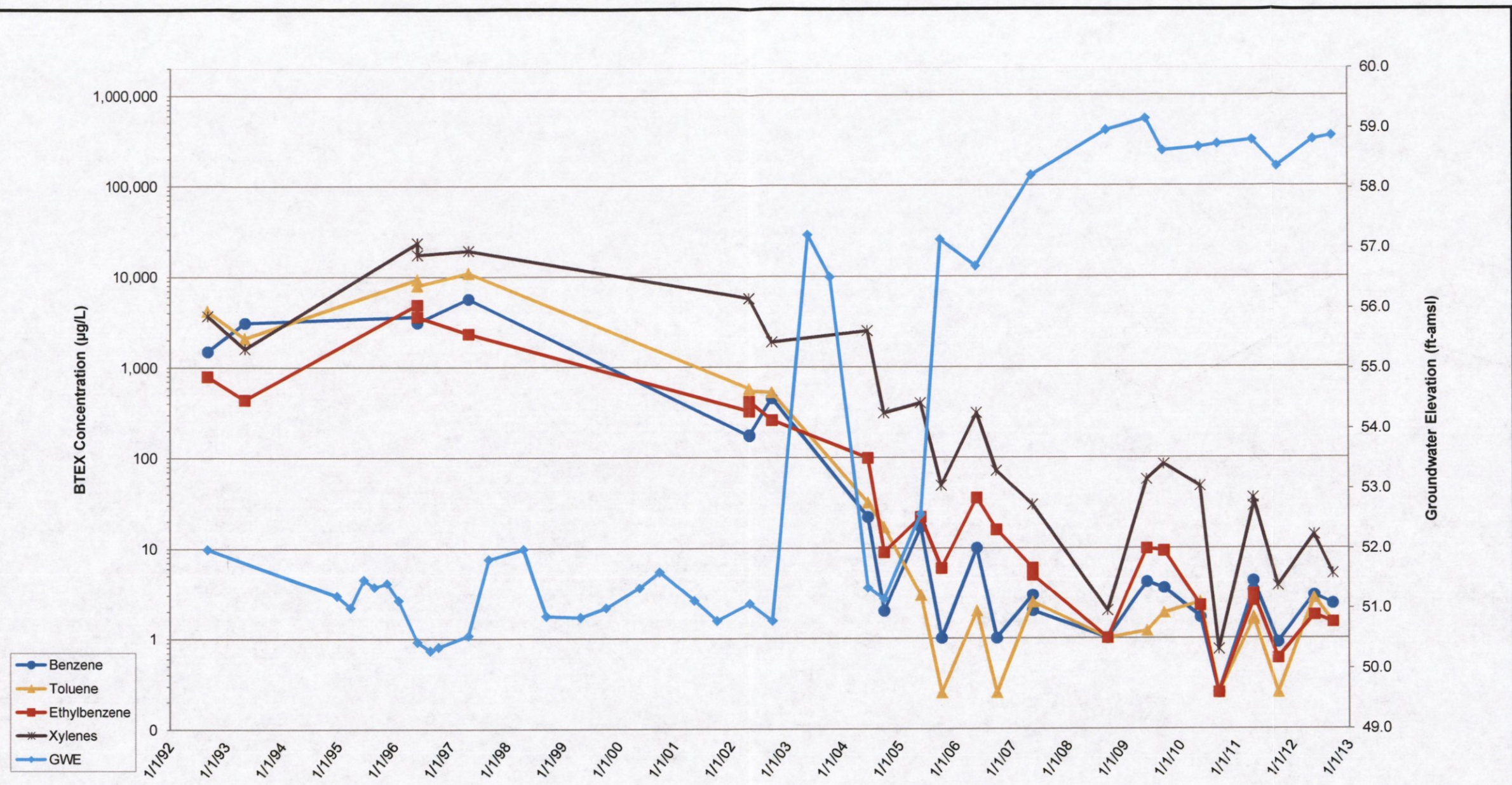





Notes:

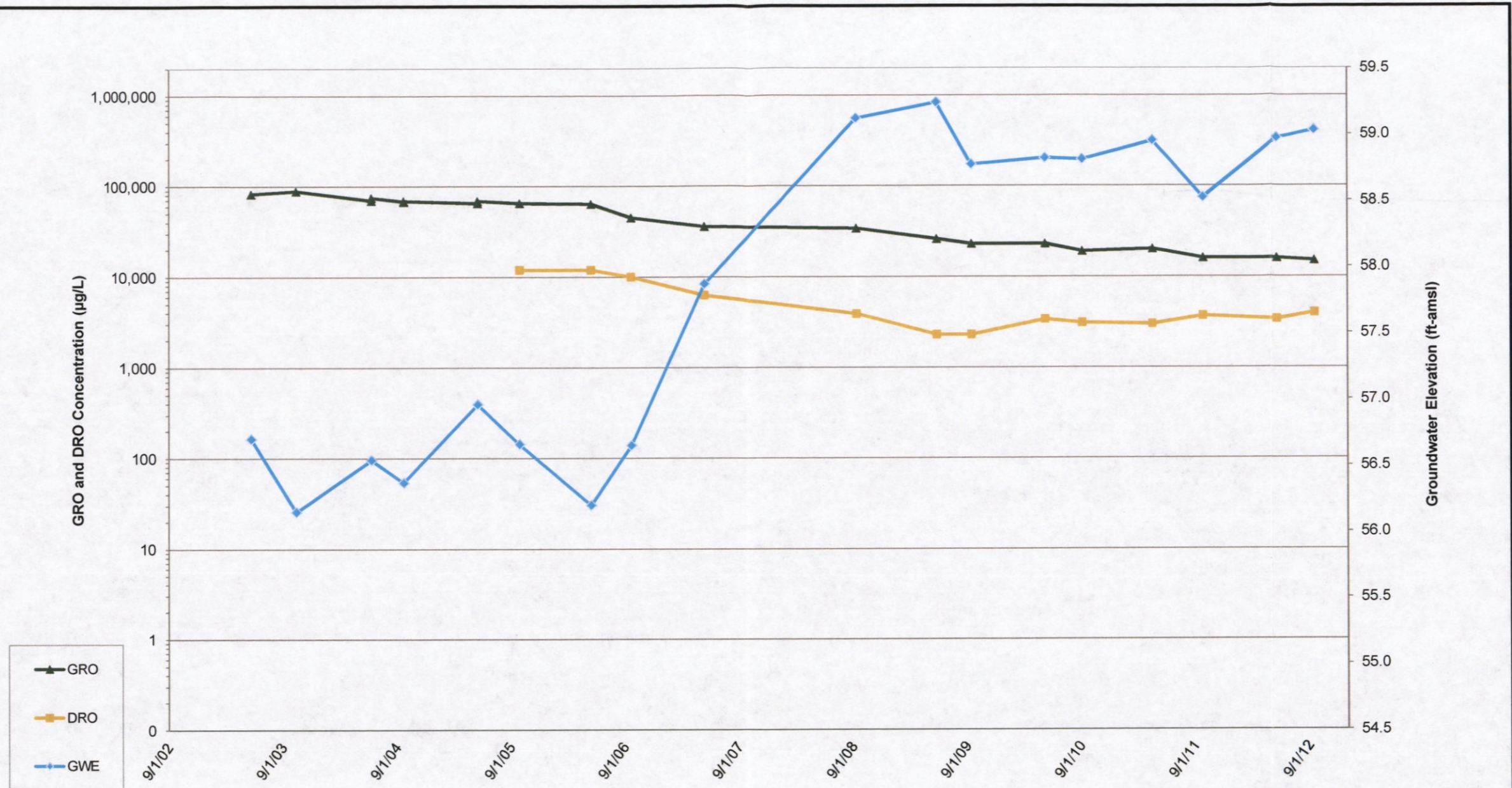
Top of Casing (TOC) resurveyed in May 2005
 GRO = Gasoline range organics
 DRO = Diesel range organics
 GWE = Groundwater elevation
 µg/L = micrograms per liter
 ft-amsl = Feet above mean sea level
 Half of detection limit value was used for non-detect results

FORMER CHEVRON FACILITY 96097 303 FIREWEED LANE, FAIRBANKS, ALASKA CLEANUP PLAN	
Monitoring Well MW-5 Historical Groundwater Elevation and Analytical Data - GRO and DRO	
 Infrastructure · Water · Environment · Buildings	GRAPH 1




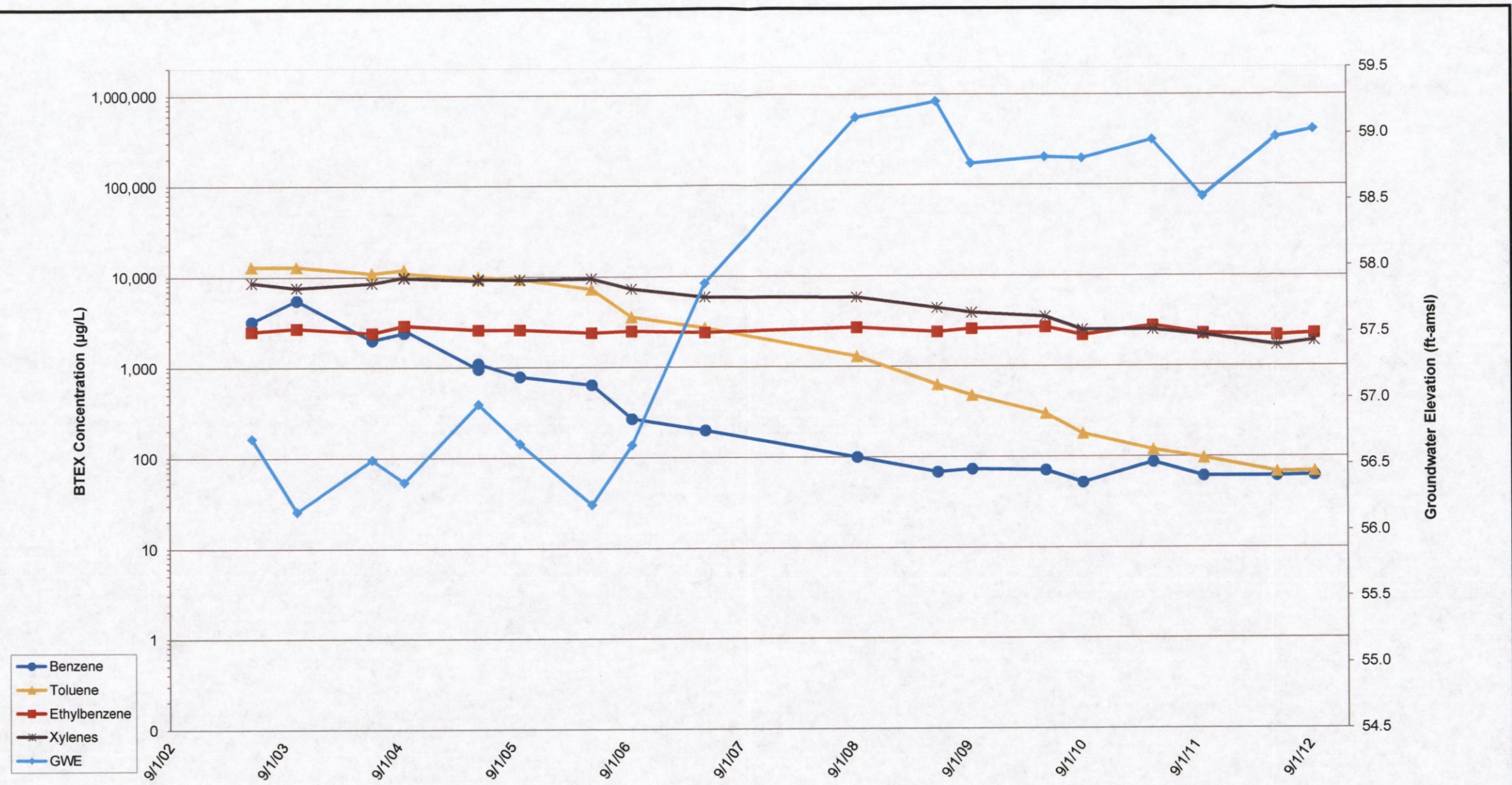
Notes:
 Top of Casing (TOC) resurveyed in May 2005
 BTEX = Benzene, Toluene, Ethylbenzene, and Xylenes
 GWE = Groundwater elevation
 µg/L = micrograms per liter
 ft-amsl = Feet above mean sea level
 Half of detection limit value was used for non-detect results

FORMER CHEVRON FACILITY 96097 303 FIREWEED LANE, FAIRBANKS, ALASKA CLEANUP PLAN	
Monitoring Well MW-5 Historical Groundwater Elevation and Analytical Data - BTEX	
 Infrastructure · Water · Environment · Buildings	GRAPH 2



Notes:
 Top of Casing (TOC) resurveyed in May 2007
 GRO = Gasoline range organics
 DRO = Diesel range organics
 GWE = Groundwater elevation
 µg/L = micrograms per liter
 ft-amsl = Feet above mean sea level
 Half of detection limit value was used for non-detect results


FORMER CHEVRON FACILITY 96097 303 FIREWEED LANE, FAIRBANKS, ALASKA CLEANUP PLAN	
Monitoring Well MW-7 Historical Groundwater Elevation and Analytical Data - GRO and DRO	
 Infrastructure · Water · Environment · Buildings	GRAPH 3



Notes:
 Top of Casing (TOC) resurveyed in May 2007
 BTEX = Benzene, Toluene, Ethylbenzene, and Xylenes
 GWE = Groundwater elevation
 µg/L = micrograms per liter
 ft-amsl = Feet above mean sea level
 Half of detection limit value was used for non-detect results

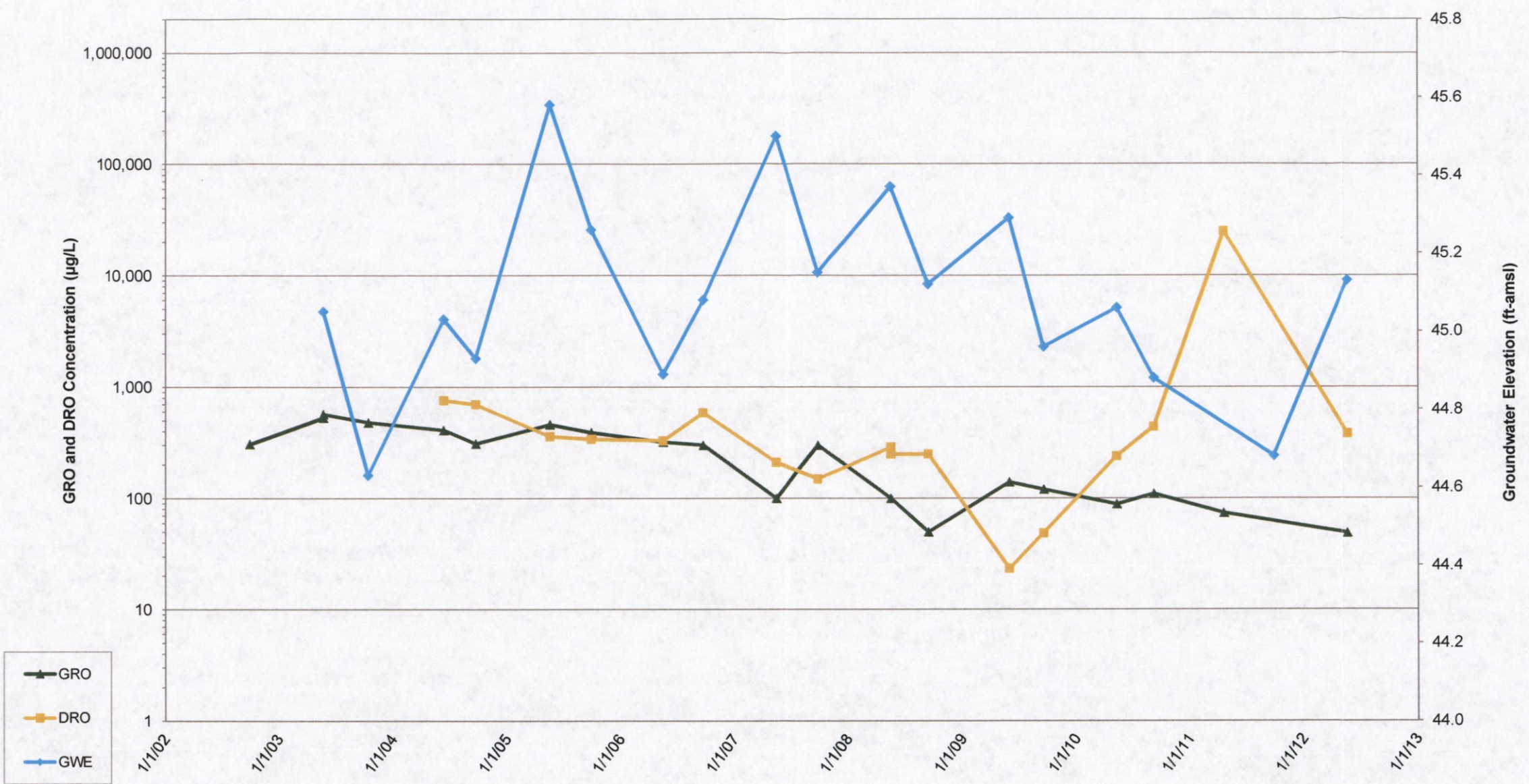
FORMER CHEVRON FACILITY 96097
 303 FIREWEED LANE, FAIRBANKS, ALASKA
CLEANUP PLAN

Monitoring Well MW-7
Historical Groundwater Elevation and Analytical
Data - BTEX




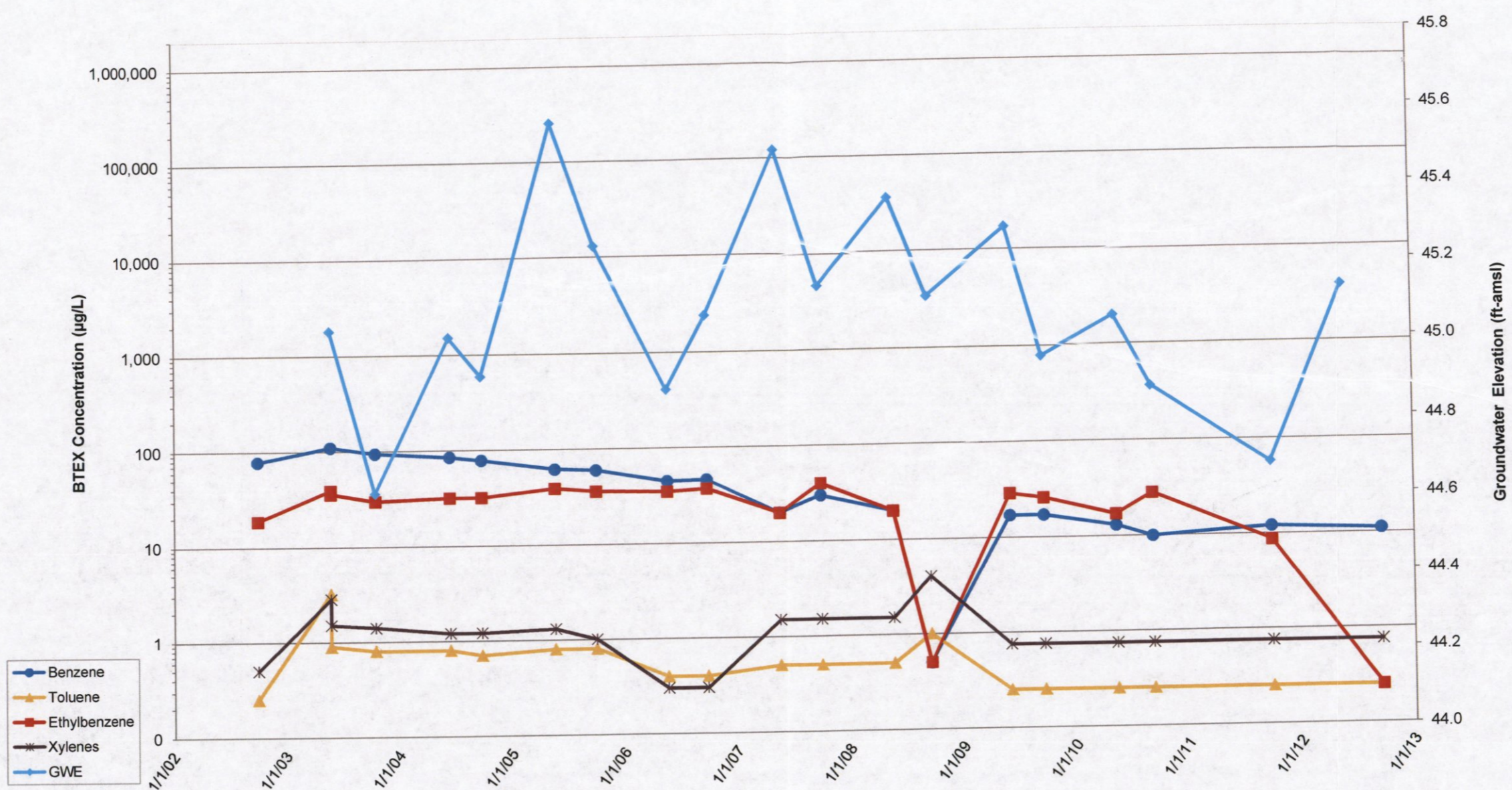
GRAPH
4

Infrastructure · Water · Environment · Buildings



Notes:
 GRO = Gasoline range organics
 DRO = Diesel range organics
 GWE = Groundwater elevation
 µg/L = micrograms per liter
 ft-amsl = Feet above mean sea level
 Half of detection limit value was used for non-detect results

FORMER CHEVRON FACILITY 96097 303 FIREWEED LANE, FAIRBANKS, ALASKA CLEANUP PLAN	
Monitoring Well MW-8 Historical Groundwater Elevation and Analytical Data - GRO and DRO	
 Infrastructure · Water · Environment · Buildings	GRAPH 5




Notes:

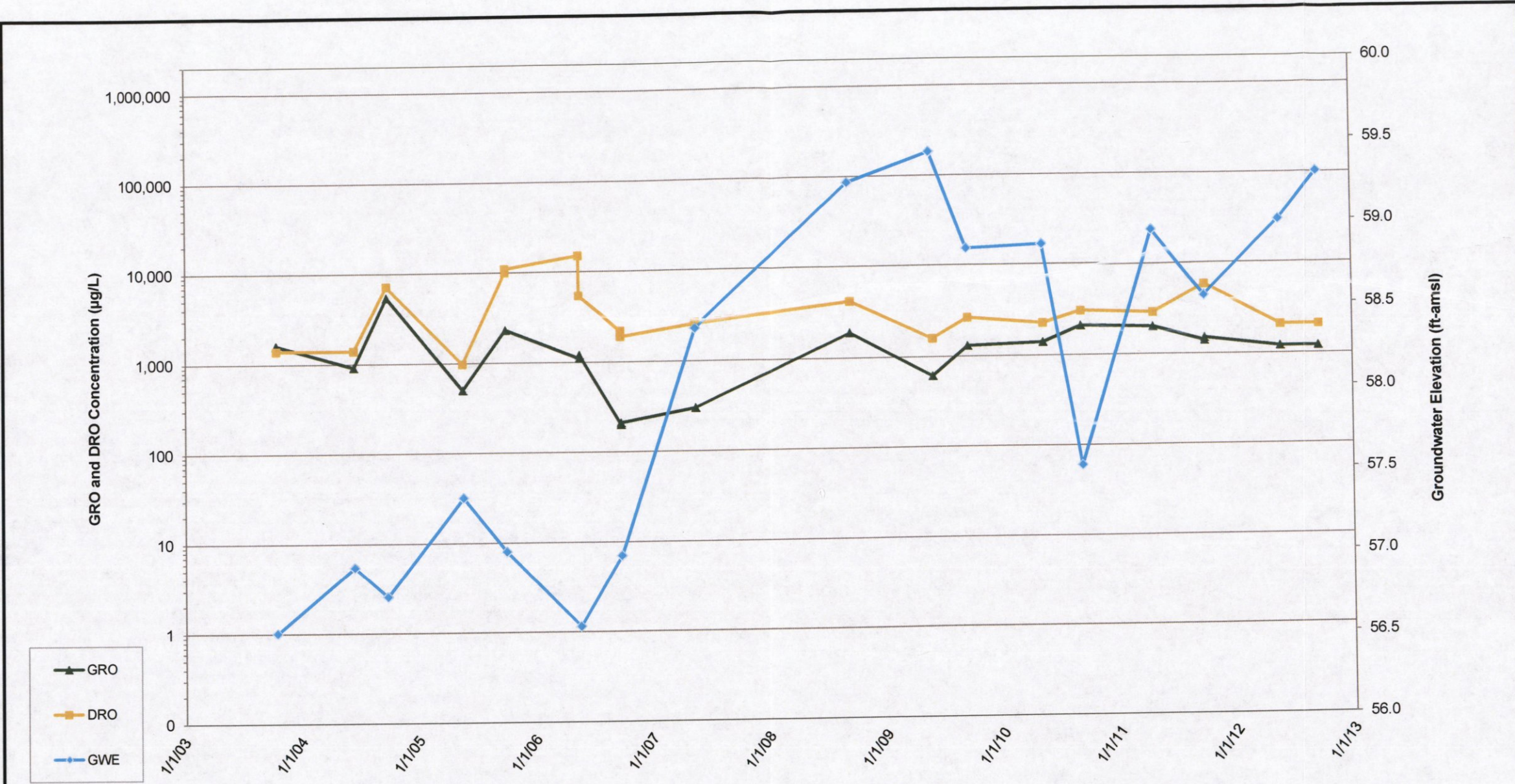
BTEX = Benzene, Toluene, Ethylbenzene, and Xylenes
 GWE = Groundwater elevation
 µg/L = micrograms per liter
 ft-amsl = Feet above mean sea level
 Half of detection limit value was used for non-detect results

FORMER CHEVRON FACILITY 96097
 303 FIREWEED LANE, FAIRBANKS, ALASKA
 CLEANUP PLAN

**Monitoring Well MW-8
 Historical Groundwater Elevation and Analytical
 Data - BTEX**



ARCADIS
Infrastructure · Water · Environment · Buildings

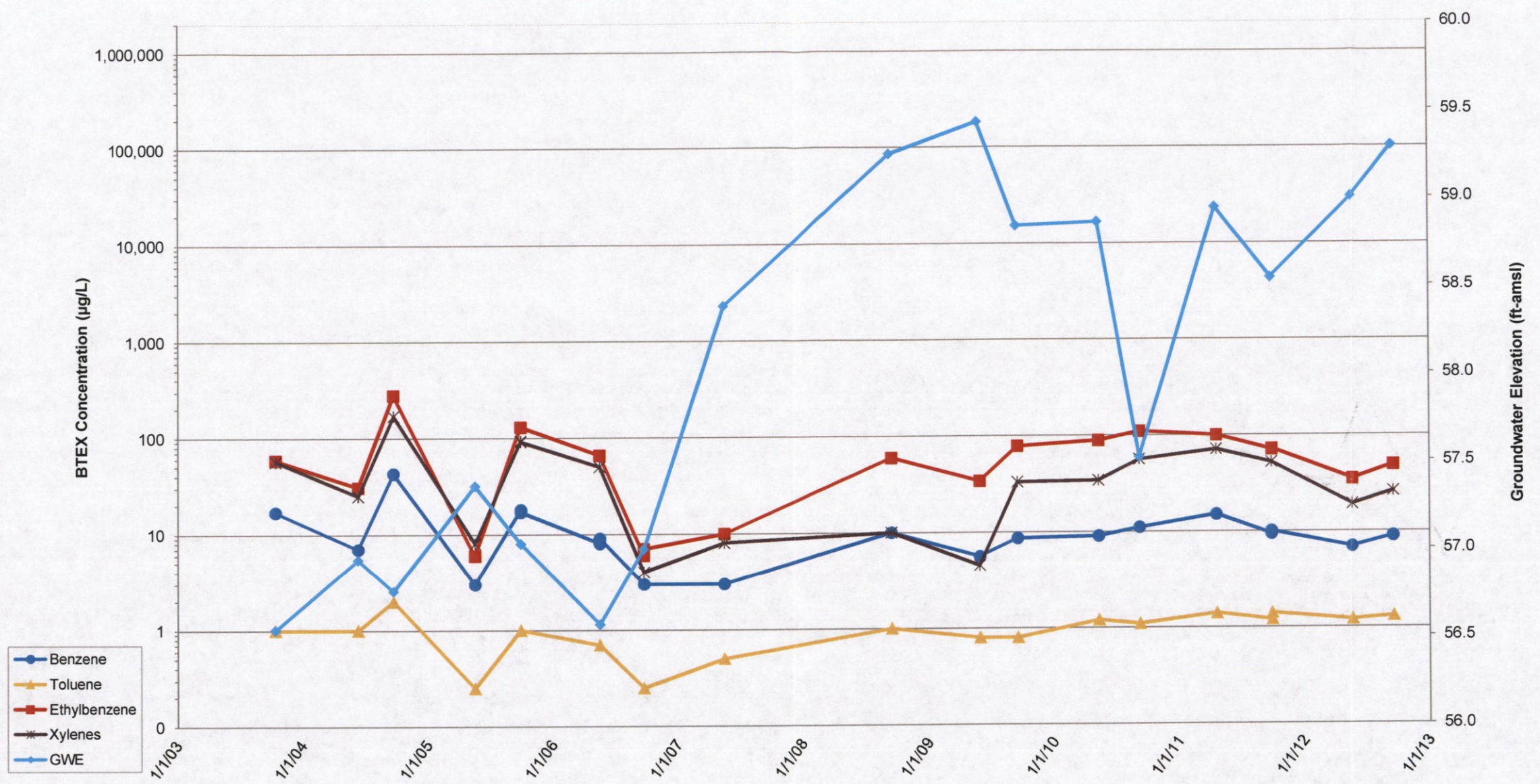
GRAPH
6



Notes:

Top of Casing (TOC) resurveyed in May 2007
 GRO = Gasoline range organics
 DRO = Diesel range organics
 GWE = Groundwater elevation
 µg/L = micrograms per liter
 ft-amsl = Feet above mean sea level
 Half of detection limit value was used for non-detect results


FORMER CHEVRON FACILITY 96097 303 FIREWEED LANE, FAIRBANKS, ALASKA CLEANUP PLAN	
Monitoring Well MW-9 Historical Groundwater Elevation and Analytical Data - GRO and DRO	
 Infrastructure · Water · Environment · Buildings	GRAPH 7



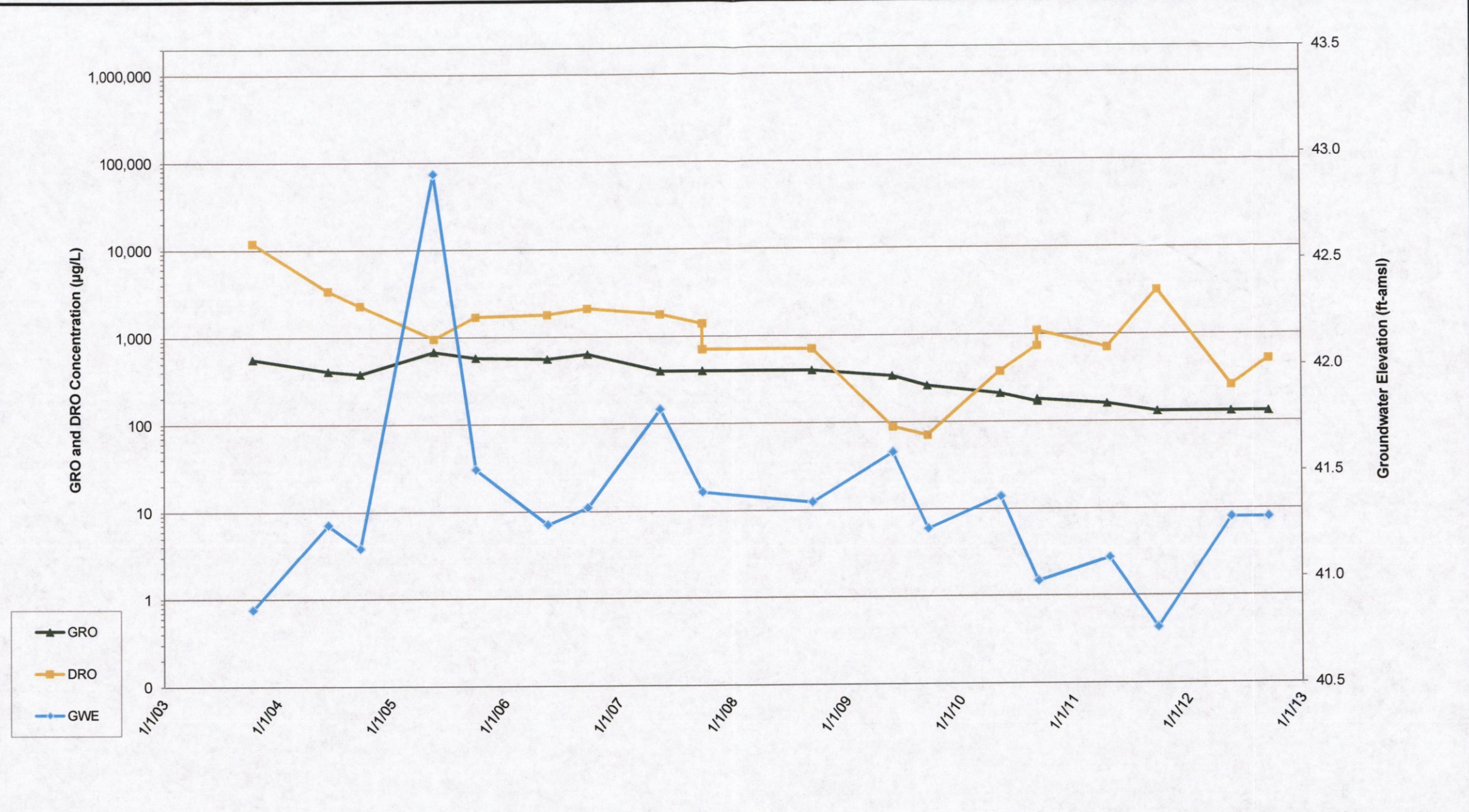
Notes:
 Top of Casing (TOC) resurveyed in May 2007
 BTEX = Benzene, Toluene, Ethylbenzene, and Xylenes
 GWE = Groundwater elevation
 µg/L = micrograms per liter
 ft-amsl = Feet above mean sea level
 Half of detection limit value was used for non-detect results

FORMER CHEVRON FACILITY 96097
 303 FIREWEED LANE, FAIRBANKS, ALASKA
 CLEANUP PLAN

Monitoring Well MW-9
Historical Groundwater Elevation and Analytical
Data - BTEX


 **ARCADIS**
Infrastructure · Water · Environment · Buildings

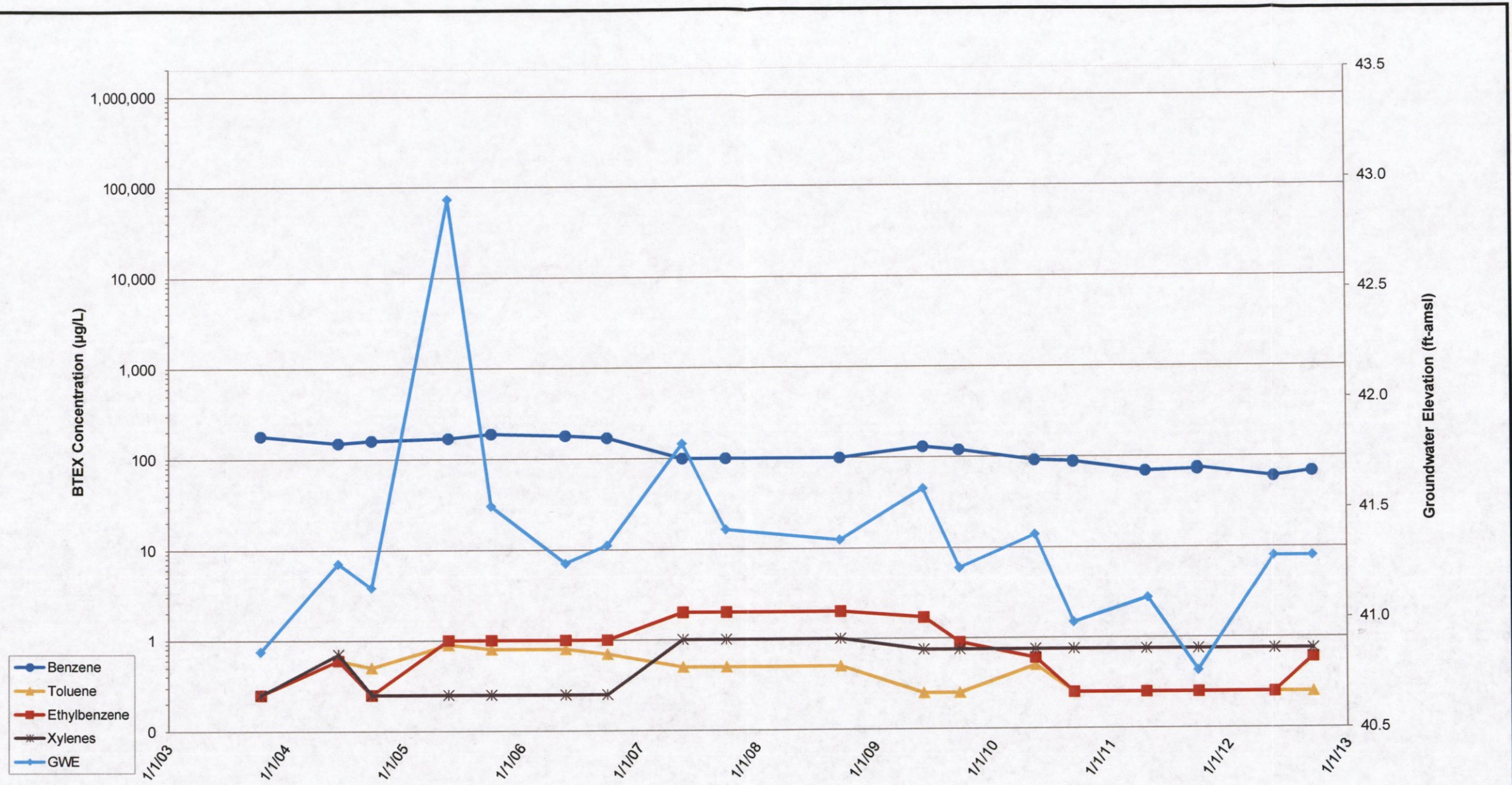
GRAPH
8



Notes:


GRO = Gasoline range organics
 DRO = Diesel range organics
 GWE = Groundwater elevation
 µg/L = micrograms per liter
 ft-amsl = Feet above mean sea level
 Half of detection limit value was used for non-detect results

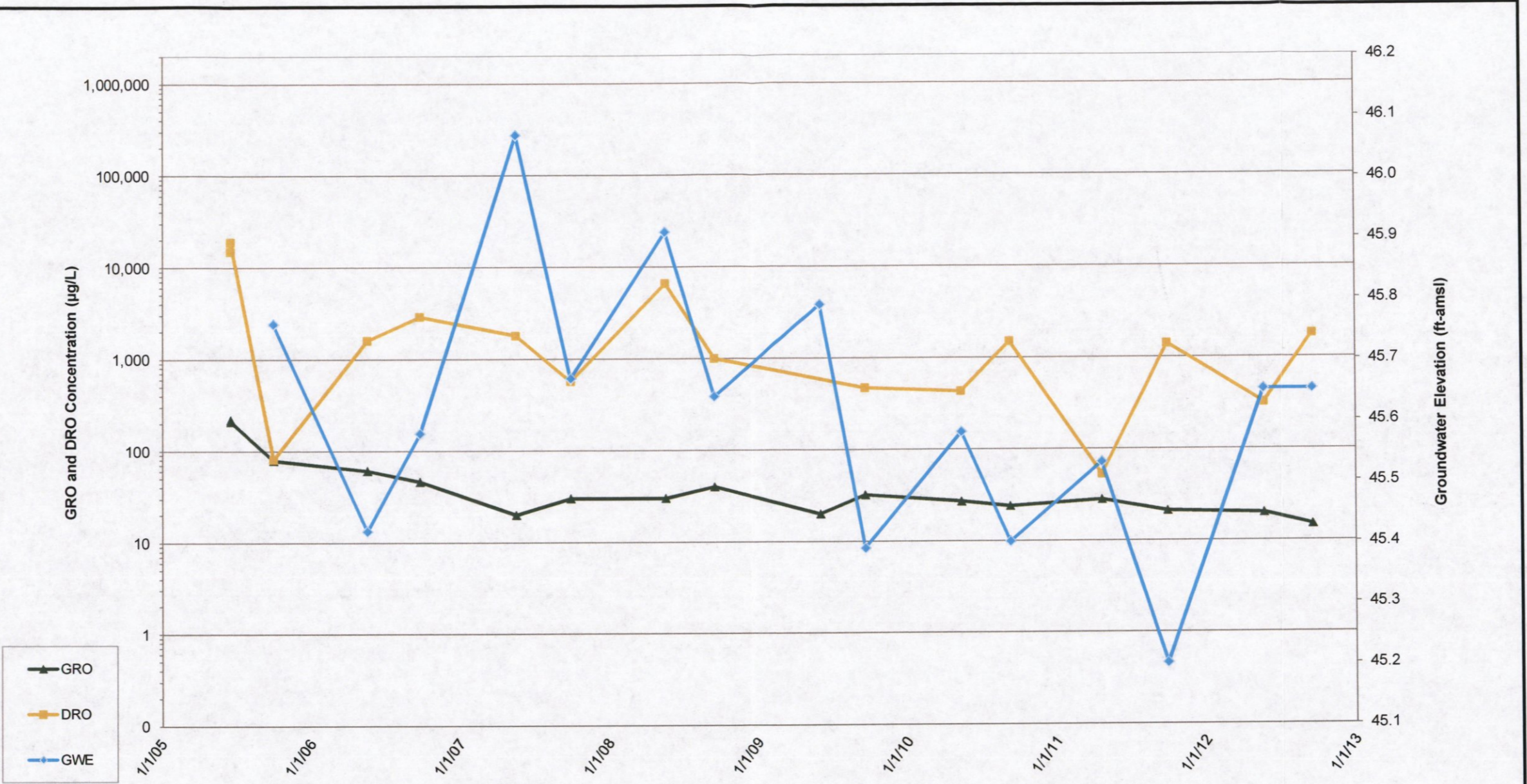
FORMER CHEVRON FACILITY 96097 303 FIREWEED LANE, FAIRBANKS, ALASKA CLEANUP PLAN	
Monitoring Well MW-12 Historical Groundwater Elevation and Analytical Data - GRO and DRO	
 Infrastructure · Water · Environment · Buildings	GRAPH 9



Notes:


BTEX = Benzene, Toluene, Ethylbenzene, and Xylenes
 GWE = Groundwater elevation
 µg/L = micrograms per liter
 ft-amsl = Feet above mean sea level
 Half of detection limit value was used for non-detect results

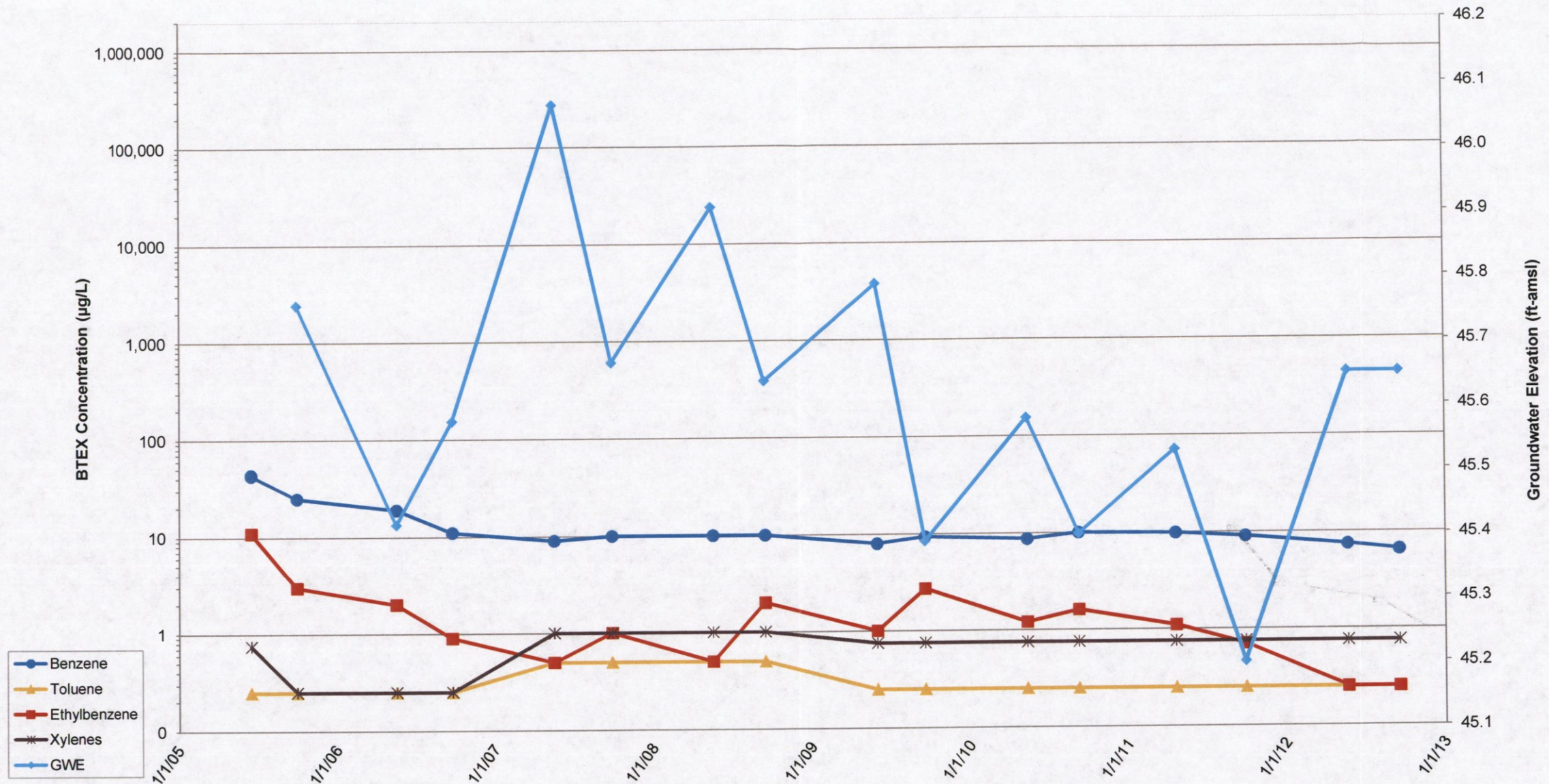
FORMER CHEVRON FACILITY 96097 303 FIREWEED LANE, FAIRBANKS, ALASKA CLEANUP PLAN	
Monitoring Well MW-12 Historical Groundwater Elevation and Analytical Data - BTEX	
 Infrastructure · Water · Environment · Buildings	GRAPH 10



Notes:


GRO = Gasoline range organics
 DRO = Diesel range organics
 GWE = Groundwater elevation
 µg/L = micrograms per liter
 ft-amsl = Feet above mean sea level
 Half of detection limit value was used for non-detect results

FORMER CHEVRON FACILITY 96097 303 FIREWEED LANE, FAIRBANKS, ALASKA CLEANUP PLAN	
Monitoring Well MW-14 Historical Groundwater Elevation and Analytical Data - GRO and DRO	
 Infrastructure · Water · Environment · Buildings	GRAPH 11



Notes:

BTEX = Benzene, Toluene, Ethylbenzene, and Xylenes
 GWE = Groundwater elevation
 µg/L = micrograms per liter
 ft-amsl = Feet above mean sea level
 Half of detection limit value was used for non-detect results

FORMER CHEVRON FACILITY 96097 303 FIREWEED LANE, FAIRBANKS, ALASKA CLEANUP PLAN	
Monitoring Well MW-14 Historical Groundwater Elevation and Analytical Data - BTEX	
 Infrastructure · Water · Environment · Buildings	GRAPH 12