



Stantec Consulting Services Inc.
725 East Fireweed Lane Suite 200, Anchorage AK 99503-224

December 7, 2023

Stantec Project Number: 203723075

Paula Sime, PG
Manager, Environmental Services
7-Eleven, Inc.
P.O. Box 1026
Temecula, California 92593

RE: **2024 Corrective Action Work Plan**
Former Tesoro Northstore (TNS) #111
3679 College Road, Fairbanks, Alaska
ADEC Facility ID #1112; ADEC Hazard ID #24247; ADEC File #100.26.026

Dear Ms. Sime:

This letter presents the 2024 (calendar year) Corrective Action Plan (CAP) for the monitoring and remediation of petroleum contamination at the above referenced site. The 2024 CAP was prepared by Stantec Consulting Services, Inc. (Stantec) on behalf of 7-Eleven, Inc. (7-Eleven) for Tesoro Northstore (TNS) #111 located in Fairbanks, Alaska.

This 2024 CAP will be presented at the annual work session with the Alaska Department of Environmental Conservation (ADEC), 7-Eleven, and Stantec. The work session is scheduled for December 7, 2023, and will be presented by Stantec on behalf of 7-Eleven to Pete Campbell, ADEC representative, virtually via Microsoft Teams app.

Attached to this letter are the following items associated with the completion of the 2023 CAP tasks: Location and Vicinity Map, Site Map with Analytical Data Results (4Q October 2023 GWM Event), and Analytical Data Results Tables of Historical Monitoring Events. The site plans, sampling test results and additional site documents for the subject site will be included in a PowerPoint presentation that will be delivered by Stantec during the December 7 work session.

The following sections provide a summary of the work plan tasks that were completed under the current 2023 CAP followed with a summary of the proposed work plan tasks for the 2024 CAP.

2023 CAP Work Plan Tasks

- Task 1 – Groundwater Monitoring
 - ✓ This task was completed in accordance with the approved 2023 CAP. The schedule of the semi-annual GWM events were altered to account for the late startup of the sampling program due to the impact of the harsh winter conditions.

- Task 2 – O&M Groundwater Recirculation Wells RM-1 & RM-2
 - ✓ This task was completed in accordance with the approved 2023 CAP. In addition, the insulated water discharge line from recirculation well RM-2 was connected to the water discharge line from recirculation well RM-1. The water line connection allows for the year-round flow from RM-2 into the horizontal chemox injection lines located along the eastern edge of the existing underground storage tanks. Receding groundwater levels during the late winter cause flow from RM-1 to oscillate, requiring the pump to be shut down for the winter. Well RM-2 is not impacted by the water level drop and runs year-round.

- Task 3 – O&M Chemical Oxidation (Chemox) Treatment System
 - ✓ This task was completed in accordance with the approved 2023 CAP. The schedule of the first quarter 2023 chemox injection was altered to account for the late startup of the chemox injection program due to the impact of the harsh winter conditions.

- Task 4 – Installation of 4” diameter Chemox Injection Wells in Manholes of former Air Sparge Wells Including Modifications to Groundwater Pump & Treat Recirculation/Distribution System
 - ✓ This task was completed in accordance with the approved 2023 CAP. The 2023 CAP work plan *Task 4* proposed modification to the former AS treatment system into a chemox pump and treat system. Stantec successfully installed four new 4” diameter chemox injection wells (IW-2023-A, IW-2023-B, IW-2023-C, and IW-2023-D). In addition, Stantec completed plumbing modifications that improved the operation and distribution of the chemox pump and treat system in the vicinity of the fueling islands. The plumbing changes completed this year allows for continuous discharge of the groundwater from recirculation/remediation well RM-2.

Proposed Work Plan Tasks for 2024

The following table summarizes the proposed tasks and implementation schedule for the 2024 CAP:

2024 CAP Work Plan Tasks and Schedule

Work Plan Tasks for 2024		1 st Quarter	2 nd Quarter	3 rd Quarter	4 th Quarter
Task 1	Monitoring Wells: MW-10, MW-11, MW-12, MW-13, MW-16, G-1, G-5		V, G, D, P, I & S	V, G, D, P, I & S	V, G, D, P, I & S
	MW 17-1, MW 17-2, and Recirculation/Remediation Wells RM-1 and RM-2		V, G, D, P, I & S	V, G, D, P, I & S	V, G, D, P, I & S
Task 2	O&M Groundwater Recirculation Wells RM-1 & RM-2		✓	✓	✓
Task 3	Chemical Oxidation Treatment		✓	✓	✓

Key:

- AK – Alaska Test Method
- D – Diesel range organics by AK102.
- G – Gasoline range organics by AK101.
- I – Intrinsic indicators include dissolved oxygen, specific conductance, oxygen-reduction potential, pH, and temperature.
- O&M – Operation and Maintenance
- P – Polynuclear aromatic hydrocarbons (PAHs), i.e., semi-volatile organic compounds associated with petroleum fuel, by EPA Test Method 8270D Selective Ion Monitoring (SIM).
- S – Sodium analyzed by Metals (ICP) Method 6010C.
- V – Volatile organic compounds by EPA Test Method 8260C.

- *Task 1 –Groundwater Monitoring*

Monitoring of the on-site groundwater monitoring wells will be conducted on a quarterly basis except for the first quarter of 2024 as outlined in 2024 Work Plan Schedule shown above. Sampling schedules, well locations and analyses are referenced in the 2024 Work Plan Schedule.

The on-site monitoring wells will be sampled to assess treatment impact on the groundwater table. The remediation/recirculation wells will be sampled on a quarterly basis with the exception of the first quarter of the year.

- *Task 2 – O&M Groundwater Recirculation Wells RM-1 & RM-2*

Perform quarterly maintenance on the remediation system, which consists of the existing 4-inch diameter recirculation/remediation wells RM-1 and RM-2. These wells are used as part of a pump and treat system to remediate the soil and groundwater beneath the existing USTs and fuel dispenser islands the injection of a chemical oxidant (see below *Task 3*).

The submersible pumps for the two pump and treat systems will run continuously (24-hours per day) subject to acceptable groundwater table levels for operation of the pumps. During low groundwater flow times of the year - particularly during the winter months - the submersible pump in RM-1 may be temporarily shut down until late spring when the groundwater table typically rises. The pumping systems for both wells are monitored daily for electrical usage, water pressure and water line temperature with iMonnit[®] wireless sensors and the equipment checked monthly with maintenance that will be provided on an as need basis. The iMonnit[®] remote monitoring system uses a wireless broadband network via cellular internet.

- Task 3 – Chemical Oxidation Treatment

Stantec proposes to provide chemical oxidation (chemox) treatment of the petroleum contaminated soil and groundwater via the recently installed 4” diameter injection wells (IW-2023-A, IW-2023-B, IW-2023-C and IW-2023-D) located in the vicinity of the fuel dispenser islands and the two horizontal injection lines located on the east side of the USTs. The injection of chemox will occur in the second, third and first part of the fourth quarters of the year. Subject to suitable (non-freezing) weather conditions, Stantec will attempt to inject chemox on a monthly basis throughout the year with the exception of the first quarter. Also, the groundwater monitoring wells will be sampled for sodium to assess the distribution of the chemical oxidant.

A total of four hundred (400) gallons of a prepared solution of the chemical oxidant Klozur One[®] (a chemical mixture consisting primarily of sodium persulfate) will be injected into the new 4” diameter injection wells and the existing horizontal injection lines with a dose of 100 gallons per injection well. The chemox mixture for each well will consist of 110 pounds Klozur One[®] mixed with approximately 100 gallons of water pumped from well RM-2. All the vertical injection wells and horizontal injection lines are continuously dosed during most of the year with recirculated groundwater discharged primarily from well RM-2.

The Corrective Action Work Plan for the year 2024 will be implemented by Stantec on behalf of 7-Eleven. Groundwater monitoring will be conducted to track migration and trends of contaminants that are present at the site.

All sampling activities will be completed in accordance with ADEC’s *Underground Storage Tanks Procedures Manual– Standard Sampling Procedures* (March 22, 2017). The methods that will be used for conducting a monitoring event, unless otherwise noted in the monitoring report, will include:

- The static water levels in the monitoring wells will be measured with respect to the top of each well casing. The elevation of the static water level will be based on an arbitrary datum established on-site during a vertical control survey that will be completed by Stantec on an annual basis. The survey will be performed during the summer after the seasonal frost layer thaws.
- The monitoring wells will be purged of a minimum of three well bore volumes prior to collecting the water samples. A new, disposable, Teflon[®] bailer will be used to sample each well. The first bail of water removed from each well will be examined for petroleum odor, sheen, and any other unique physical features.



- Water samples will be collected in laboratory-supplied sample containers. The samples will be delivered to an ADEC-approved laboratory in accordance with standard chain-of-custody procedures.
- Additional water samples will be collected from the monitoring wells after the well has been purged, as described above, and tested in the field for chemical and physical intrinsic parameters listed in the 2024 Work Plan Schedule shown above.

If you have any questions or need additional information concerning this 2024 Corrective Action Work Plan, please contact us at (907) 227-9883.

Regards,

STANTEC CONSULTING SERVICES INC.

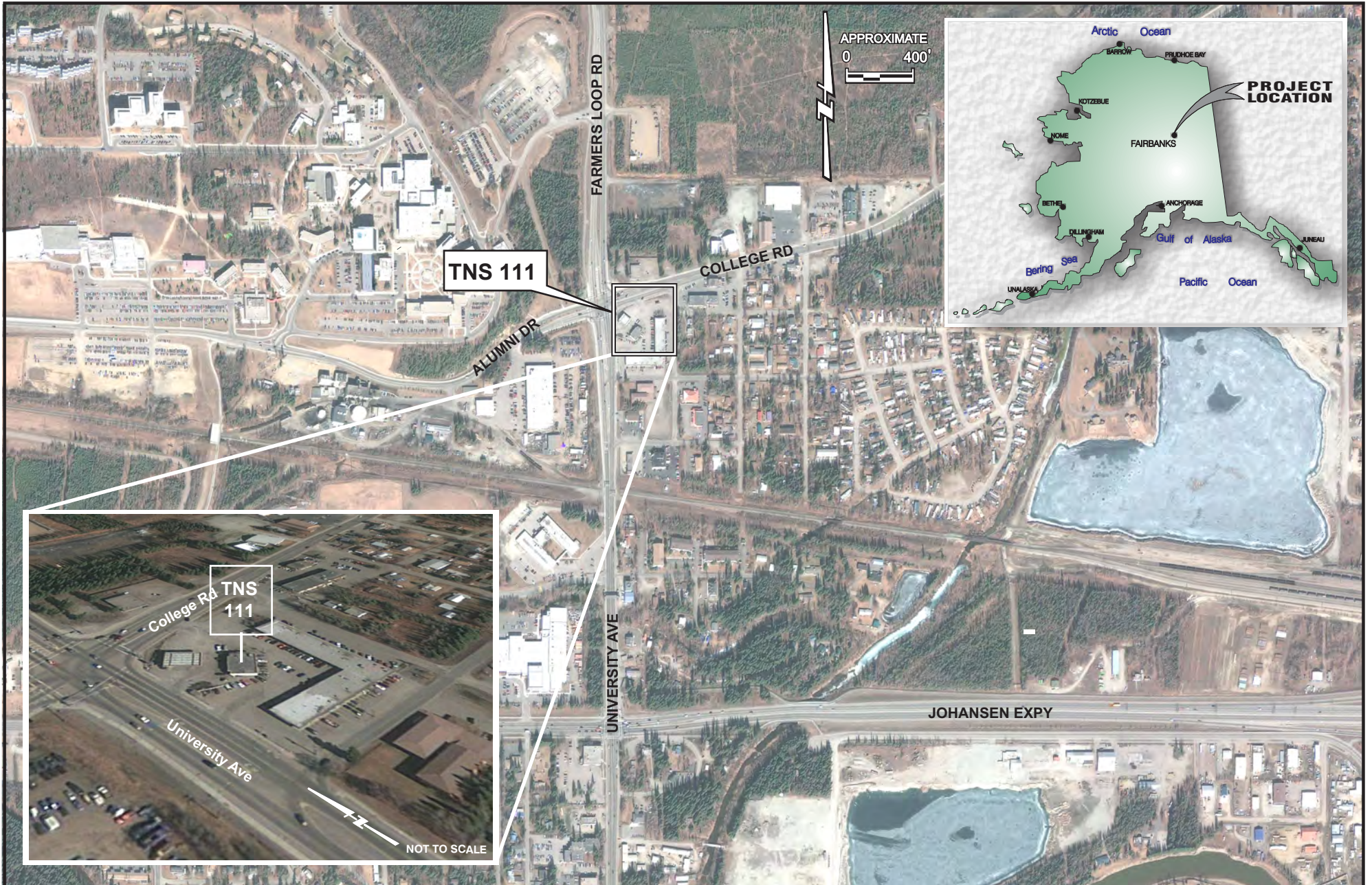
A handwritten signature in black ink that reads "M. Zidek".

Michael A. Zidek, PMP
Project Manager

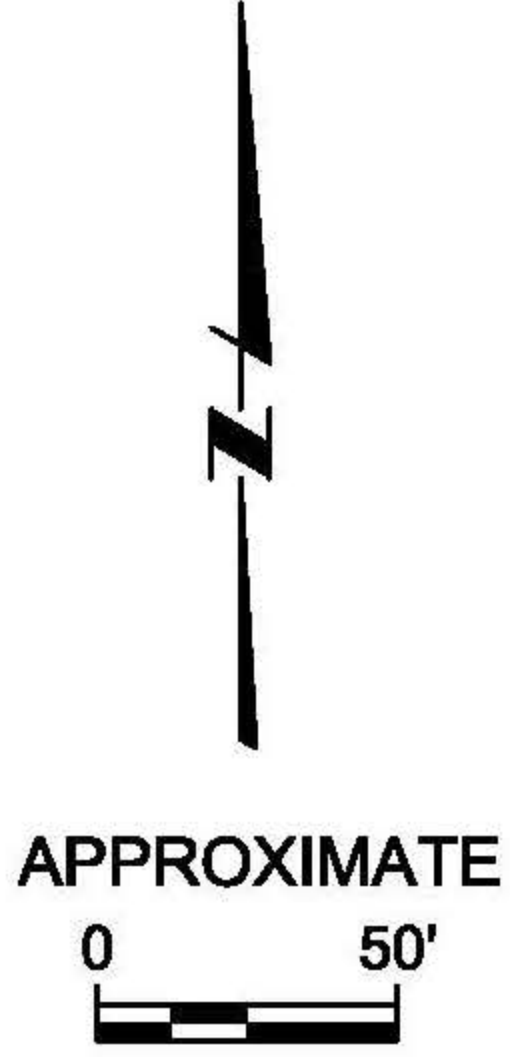
A handwritten signature in black ink that reads "Bob Gilfilian".

Robert (Bob) Gilfilian, P.E.
Project Technical Lead

Attachments: Figure 1 – Location and Vicinity Map
Figure 2 – Site Map with Analytical Data Results
(4Q October 2023 GWM Event)
Analytical Data Results Tables of Historical Monitoring Events



SITE DATA COMPARED TO ADEC Groundwater Cleanup Levels (GCLs)			
ND	NOT DETECTED	124-TMB	0.056 mg/L
--	NOT SAMPLED	135-TMB	0.06 mg/L
50	SAMPLED & UNDER CRITERION	BENZENE	0.0046 mg/L
100	SAMPLED & OVER CRITERION	DRO	1.5 mg/L
FP	FREE PRODUCT	ETHYLBENZENE	0.015 mg/L
	DISPLAYED IN mg/L	GRO	2.2 mg/L
		NAPHTHALENE	0.0017 mg/L
		SODIUM	
		TOLUENE	1.1 mg/L
		XYLENES	0.19 mg/L



RM-1	10/24/23
124-TMB	0.477
135-TMB	0.266
BENZENE	0.00266
DRO	2.35
ETHYLBENZENE	0.186
GRO	5.53
NAPHTHALENE	0.0395
SODIUM	85.6
TOLUENE	U(0.00100)
XYLENES	1.22

MW-13	10/24/23
124-TMB	0.00644
135-TMB	0.00367
BENZENE	0.00299
DRO	U(0.840)
ETHYLBENZENE	0.0157
GRO	0.111
NAPHTHALENE	U(0.000250)
SODIUM	140
TOLUENE	0.000576
XYLENES	0.0225

MW-16	10/24/23
124-TMB	U(0.00100)
135-TMB	U(0.00100)
BENZENE	U(0.00100)
DRO	0.497
ETHYLBENZENE	U(0.00100)
GRO	U(0.100)
NAPHTHALENE	U(0.000250)
SODIUM	43.5
TOLUENE	U(0.00100)
XYLENES	U(0.00100)

RM-2	10/24/23
124-TMB	0.0551
135-TMB	0.0271
BENZENE	0.013
DRO	0.903
ETHYLBENZENE	0.197
GRO	1.6
NAPHTHALENE	0.0185
SODIUM	56
TOLUENE	U(0.00100)
XYLENES	0.283

MW-10	10/24/23
124-TMB	0.0405
135-TMB	0.0138
BENZENE	0.00271
DRO	0.354
ETHYLBENZENE	0.0205
GRO	0.461
NAPHTHALENE	0.000436
SODIUM	68.3
TOLUENE	U(0.00100)
XYLENES	0.0276

MW-11	10/24/23
124-TMB	0.188
135-TMB	0.062
BENZENE	0.0082
DRO	0.6
ETHYLBENZENE	0.0761
GRO	1.77
NAPHTHALENE	0.00915
SODIUM	63.3
TOLUENE	U(0.00100)
XYLENES	0.0786

G-5	10/24/23
124-TMB	0.0095
135-TMB	0.00297
BENZENE	0.00934
DRO	0.424
ETHYLBENZENE	0.0517
GRO	0.629
NAPHTHALENE	U(0.000250)
SODIUM	89.5
TOLUENE	U(0.00100)
XYLENES	0.0512

MW17-2	10/24/23
124-TMB	0.00213
135-TMB	0.00254
BENZENE	0.00609
DRO	1.26
ETHYLBENZENE	0.00154
GRO	0.231
NAPHTHALENE	U(0.000250)
SODIUM	96.8
TOLUENE	U(0.00100)
XYLENES	0.00328

G-1	10/24/23
124-TMB	U(0.00100)
135-TMB	U(0.00100)
BENZENE	U(0.00100)
DRO	U(0.864)
ETHYLBENZENE	U(0.00100)
GRO	U(0.100)
NAPHTHALENE	U(0.000250)
SODIUM	86.3
TOLUENE	U(0.00100)
XYLENES	U(0.00100)

MW-12	10/24/23
124-TMB	U(0.00100)
135-TMB	0.00109
BENZENE	0.00543
DRO	U(0.840)
ETHYLBENZENE	0.0292
GRO	0.196
NAPHTHALENE	0.000731
SODIUM	110
TOLUENE	0.00134
XYLENES	0.00838

MW17-1	10/24/23
124-TMB	0.27
135-TMB	0.0621
BENZENE	0.0215
DRO	2.44
ETHYLBENZENE	0.337
GRO	4.61
NAPHTHALENE	0.0162
SODIUM	96.2
TOLUENE	0.00522
XYLENES	0.712

UNIVERSITY AVENUE

THOMAS STREET

LEGEND:

- PROPERTY LINE
- ⊕ MONITORING WELL LOCATION



Tesoro North Store 111
4Q OCTOBER 2023 GWM EVENT

Site Map With Analytical
Data Results

FIGURE
2
185705774

	Well Screen Interval	Ground Water Elevator.	124-TMB	135-TMB	Benzene	DRO	Ethylbenzene	GRO	Naphthalene	Sodium	Toluene	Xylenes
Unit	ft	ft	ppm	ppm	ppm	ppm	ppm	ppm	ppm	ppm	ppm	ppm
GW Human Health Cleanup			0.056	0.06	0.0046	1.5	0.015	2.2	0.0017		1.1	0.19
G-1												
12/20/1995	--	414.48	--	--	1.54	--	0.56	--	--	--	1.26	2.53
05/16/1996	--	415.71	--	--	5.90	--	1.80	--	--	--	3.90	8.20
12/09/1996	--	--	--	--	2.10	--	0.73	--	--	--	2.10	3.10
03/20/1997	--	--	--	--	2.10	--	0.81	--	--	--	2.50	4.30
11/18/1997	--	415.22	--	--	4.91	--	1.89	--	--	--	4.21	8.00
05/01/1998	--	--	--	--	4.83	5.03	2.18	60.0	--	--	6.67	10.13
10/14/1998	--	416.35	--	--	5.04	4.37	1.80	43.0	--	--	3.81	7.47
05/27/1999	--	415.30	--	--	4.34	5.46	1.94	43.0	--	--	5.02	8.89
11/05/1999	--	415.48	--	--	2.59	3.16	1.01	23.0	--	--	1.74	3.89
04/17/2000	--	414.06	--	--	3.12	5.90	1.64	46.0	--	--	3.77	7.14
10/26/2000	--	417.48	--	--	3.04	2.19	1.15	23.0	--	0.596		3.39
05/30/2001	--	413.60	--	--	1.59	2.61	0.727	17.0	--	0.158		1.87
05/01/2002	--	414.52	--	--	1.30	1.84	0.683	8.60	--	0.03710		1.51
08/19/2002	--	417.79	--	--	0.89	1.41	0.774	13.5	--	0.05880		1.465
11/05/2002	--	417.06	--	--	0.06160	U (0.5)	0.0084500	0.787	--	U (0.002)		0.06660
03/19/2003	--	416.18	--	--	0.0076500	U (0.002)	0.509	U (0.002)		U (0.002)		0.0024200
08/05/2003	--	418.33	--	--	0.11	U (0.32)	0.101	1.30	--	0.0020900		0.0620
03/08/2004	--	414.92	--	--	0.0097900	U (0.37)	U (0.0005)	U (0.05)	--	U (0.0005)		U (0.001)
09/15/2004	--	416.65	--	--	0.0020600	U (0.385)	U (0.0005)	U (0.05)	--	U (0.0005)		U (0.0015)
01/10/2005	--	414.58	--	--	0.03270	U (0.388)	0.000623000	0.134	--	U (0.0005)		U (0.0015)
07/15/2005	--	417.94	--	--	0.06260	U (0.391)	0.04450	0.426	--	U (0.0005)		0.0035400
02/16/2006	--	414.54	--	--	0.0040600	U (0.397)	U (0.0005)	U (0.05)	--	U (0.0005)		U (0.0015)
07/27/2006	--	417.37	--	--	0.02220	U (0.397)	0.01040	0.163	--	0.000805000		0.0021700
03/02/2007	--	414.59	--	--	0.0015900	U (0.424)	U (0.0005)	U (0.05)	--	U (0.0005)		U (0.0015)
10/17/2007	--	416.88	--	--	U (0.0005)	U (0.403)	U (0.0005)	U (0.05)	--	U (0.0005)		U (0.0015)
06/05/2008	--	415.81	--	--	0.0061400	0.877	U (0.0005)	0.0820	--	U (0.0005)		0.0037900
09/29/2008	--	417.21	--	--	U (0.0005)	U (0.435)	U (0.0005)	U (0.05)	--	U (0.0005)		U (0.0015)
02/25/2009	--	414.48	--	--	U (0.0005)	U (0.417)	U (0.0005)	U (0.05)	--	U (0.0005)		U (0.0015)
07/21/2009	--	416.75	--	--	0.0060100	U (0.397)	U (0.001)	0.09540	--	U (0.001)		0.0036300
03/17/2010	--	414.03	--	--	U (0.001)	U (0.431)	U (0.001)	U (0.05)	--	U (0.001)		U (0.002)
09/15/2010	--	416.56	--	--	U (0.0005)	U (0.385)	0.0092600	0.15	--	U (0.0005)		0.06190
03/22/2011	--	413.97	--	--	U (0.0005)	0.657	U (0.0005)	U (0.05)	--	U (0.0005)		U (0.0015)
09/01/2011	--	417.44	--	--	0.002900	U (0.410)	U (0.0005)	0.07190	--	0.000601000		U (0.0015)
03/13/2012	--	414.37	--	--	U (0.0005)	U (0.446)	U (0.0005)	U (0.05)	--	U (0.0005)		U (0.0015)
07/23/2012	--	417.01	--	--	0.01340	U (0.397)	U (0.0010)	0.263	--	U (0.0010)		U (0.0030)
02/21/2013	--	414.26	--	--	U (0.0005)	U (0.431)	U (0.0005)	U (0.05)	--	U (0.0005)		U (0.0015)
08/13/2013	--	416.50	--	--	0.0062100	U (0.413)	U (0.0005)	U (0.05)	--	0.000688000		U (0.0015)
03/18/2014	--	414.38	--	--	U (0.0005)	U (0.403)	U (0.0005)	U (0.05)	--	U (0.0005)		U (0.0015)
07/31/2014	--	419.66	--	--	0.002600	0.67	0.002200	0.0560	--	U (0.001)		U (0.001)

	Well Screen Interval	Ground Water Elevator.	124-TMB	135-TMB	Benzene	DRO	Ethylbenzene	GRO	Naphthalene	Sodium	Toluene	Xylenes
Unit	ft	ft	ppm	ppm	ppm	ppm	ppm	ppm	ppm	ppm	ppm	ppm
GW Human Health Cleanup			0.056	0.06	0.0046	1.5	0.015	2.2	0.0017		1.1	0.19
03/03/2015	--	415.09	—	—	U (0.0005)	U (0.45)	U (0.0005)	U (0.05)	—	—	U (0.0005)	U (0.0015)
07/27/2015	--	416.21	—	—	U (0.00054)	0.25	U (0.0005)	U (0.05)	—	—	U (0.0005)	U (0.0015)
02/23/2016	--	415.25	—	—	U (0.001)	U (0.11)	U (0.001)	U (0.05)	—	—	U (0.001)	U (0.001)
10/06/2016	--	418.73	—	—	U (0.001)	0.24	U (0.001)	U (0.05)	—	—	U (0.001)	U (0.001)
03/16/2017	--	414.96	—	—	0.005800	0.60	U (0.003)	U (0.05)	—	—	U (0.002)	U (0.002)
03/29/2018	--	414.63	—	—	0.004100	0.76	U (0.003)	U (1)	—	—	U (0.002)	U (0.002)
09/07/2018	--	418.62	—	—	0.002400	0.28	U (0.001)	U (0.15)	—	—	U (0.001)	U (0.002)
03/12/2019	--	415.23	—	—	U (0.003)	0.33	U (0.003)	9.40	—	—	U (0.002)	U (0.003)
07/29/2019	--	416.29	—	—	U (0.003)	0.30	U (0.003)	U (0.25)	—	—	U (0.002)	U (0.003)
08/03/2020	--	419.66	—	—	0.000817000	U (0.800)	U (0.001)	0.01090	—	—	U (0.001)	U (0.003)
10/14/2020	--	418.84	—	—	0.01340	0.362	0.000186000	U (0.10)	—	—	0.000615000	0.000653000
03/30/2021	--	415.54	—	—	0.0014100	0.256	U (0.001)	0.0194 BJ	—	—	U (0.001)	U (0.003)
07/22/2021	--	--	—	—	U (0.0200)	2.78	0.608	10.2	—	—	0.124	3.43
10/12/2021	--	417.96	—	—	0.0010200	0.704 J	U (0.001)	0.04270	—	—	U (0.001)	0.000267 J
05/17/2022	--	418.00	0.0010600	0.0019200	0.0024200	0.586	0.0029300	0.08290	0.0017300	78.1	U (0.00100)	0.0010900
09/21/2022	--	417.47	U (0.00100)	U (0.00100)	0.000813000	0.367	U (0.00100)	U (0.100)	0.000752000	78.5	U (0.00100)	U (0.00300)
04/27/2023	--	--	U (0.00100)	U (0.00100)	0.0011400	0.566	U (0.00100)	U (0.500)	0.0042800	95.1	0.000317000	0.000201000
07/25/2023	--	--	U (0.00100)	0.000779000	0.000952000	0.347	0.000257000	U (0.500)	—	84.4	U (0.00100)	0.000281000
10/24/2023	--	--	U (0.00100)	U (0.00100)	U (0.00100)	U (0.864)	U (0.00100)	U (0.100)	U (0.000250)	86.3	U (0.00100)	U (0.00100)
G-5												
05/30/2001	--	412.59	—	—	12.4	6.47	2.10	107	—	—	11.5	9.90
12/13/2001	--	413.22	—	—	6.21	3.05	1.71	72.8	—	—	8.71	12.74
05/01/2002	--	414.55	—	—	11.9	6.75	1.95	83.4	—	—	7.70	15.1
08/19/2002	--	417.80	—	—	12.9	7.85	2.00	86.6	—	—	7.31	8.53
11/05/2002	--	417.05	—	—	5.70	7.17	1.38	41.9	—	—	4.37	6.70
03/19/2003	--	416.19	—	—	2.46	7.55	0.741	30.0	—	—	1.75	5.25
08/05/2003	--	418.76	—	—	5.07	5.78	0.943	47.5	—	—	2.99	6.41
03/08/2004	--	414.93	—	—	0.0025400	3.45	0.0010400	0.126	—	—	0.0049500	0.03270
09/15/2004	--	416.64	—	—	0.0057700	1.84	0.000506000	0.0610	—	—	0.0012600	0.0046700
01/10/2005	--	414.80	—	—	U (0.0005)	1.22	U (0.0005)	U (0.05)	—	—	U (0.0005)	U (0.0015)
07/15/2005	--	417.83	—	—	U (0.0005)	1.19	U (0.0005)	U (0.05)	—	—	U (0.0005)	U (0.0015)
02/16/2006	--	414.48	—	—	U (0.0005)	1.08	U (0.0005)	U (0.05)	—	—	U (0.0005)	U (0.0015)
07/27/2006	--	417.09	—	—	U (0.0005)	0.865	U (0.0005)	U (0.05)	—	—	U (0.0005)	U (0.0015)
03/02/2007	--	414.24	—	—	U (0.0005)	1.03	U (0.0005)	U (0.05)	—	—	U (0.0005)	U (0.0015)
10/17/2007	--	416.22	—	—	0.000837000	3.44	U (0.0005)	U (0.05)	—	—	U (0.0005)	U (0.0015)
06/05/2008	--	415.73	—	—	U (0.0005)	1.10	0.0045200	0.112	—	—	U (0.0005)	0.03160
09/29/2008	--	417.20	—	—	U (0.0005)	1.66	0.0045800	0.07940	—	—	U (0.0005)	0.01030
02/25/2009	--	414.45	—	—	0.00068000	1.30	0.05790	2.53	—	—	0.00053000	0.174
07/21/2009	--	416.73	—	—	0.001800	1.27	U (0.001)	U (0.05)	—	—	U (0.0010)	U (0.003)
03/17/2010	--	413.98	—	—	0.0130	0.961	0.19	4.40	—	—	0.001400	0.37

	Well Screen Interval	Ground Water Elevator	124-TMB	135-TMB	Benzene	DRO	Ethylbenzene	GRO	Naphthalene	Sodium	Toluene	Xylenes
Unit	ft	ft	ppm	ppm	ppm	ppm	ppm	ppm	ppm	ppm	ppm	ppm
GW Human Health Cleanup			0.056	0.06	0.0046	1.5	0.015	2.2	0.0017		1.1	0.19
09/15/2010	--	416.59	—	—	<u>0.08490</u>	1.10	0.0027900	0.287	—	—	0.000886000	0.01490
03/22/2011	--	413.96	—	—	U (0.0005)	1.04	U (0.0005)	U (0.05)	—	—	U (0.0005)	U (0.0015)
09/01/2011	--	417.44	—	—	0.0033100	0.898	U (0.0005)	U (0.05)	—	—	U (0.0005)	U (0.0015)
03/13/2012	--	414.37	—	—	<u>0.03070</u>	1.02	<u>0.113</u>	<u>3.63</u>	—	—	0.0034600	<u>0.23</u>
07/23/2012	--	416.90	—	—	0.0019900	0.571	U (0.0010)	U (0.05)	—	—	U (0.0010)	U (0.0030)
08/13/2013	--	416.50	—	—	U (0.0005)	0.884	U (0.0005)	U (0.05)	—	—	U (0.0005)	U (0.0015)
03/18/2014	--	414.36	—	—	<u>0.0250</u>	0.778	<u>0.07390</u>	<u>2.44</u>	—	—	0.0061200	0.161
07/31/2014	--	419.24	—	—	<u>0.49</u>	1.40	<u>0.0710</u>	2.20	—	—	0.006400	<u>0.21</u>
03/03/2015	--	414.58	—	—	U (0.0005)	0.43	U (0.0005)	U (0.05)	—	—	U (0.0005)	0.001500
07/27/2015	--	416.18	—	—	<u>0.92</u>	1.40	<u>0.59</u>	<u>10.0</u>	—	—	0.57	<u>1.10</u>
02/23/2016	--	415.19	—	—	U (0.001)	0.21	U (0.001)	U (0.05)	—	—	U (0.001)	U (0.001)
10/06/2016	--	418.75	—	—	U (0.001)	0.95	U (0.001)	U (0.05)	—	—	U (0.001)	U (0.001)
03/16/2017	--	414.93	—	—	<u>0.27</u>	1.30	<u>0.56</u>	<u>7.90</u>	—	—	0.36	<u>1.91</u>
03/29/2018	--	414.68	—	—	<u>0.38</u>	<u>1.60</u>	<u>0.72</u>	<u>14.0</u>	—	—	0.30	<u>2.27</u>
09/07/2018	--	418.68	—	—	<u>0.61</u>	<u>2.40</u>	<u>0.51</u>	<u>7.40</u>	—	—	0.91	<u>1.92</u>
03/13/2019	--	415.24	—	—	<u>0.11</u>	1.20	<u>0.39</u>	<u>5.80</u>	—	—	0.0110	<u>1.05</u>
07/30/2019	--	416.31	—	—	U (0.15)	1.20	<u>0.18</u>	<u>2.90</u>	—	—	U (0.1)	<u>0.71</u>
08/04/2020	--	419.57	—	—	<u>0.114</u>	1.07	<u>0.123</u>	0.712	—	—	0.000683000	0.124
10/14/2020	--	418.67	—	—	0.001600	<u>2.16</u>	0.01480	0.251	—	—	0.0051300	0.0790
10/12/2021	--	419.21	—	—	<u>0.0060700</u>	1.42	<u>0.06610</u>	0.909	—	—	0.000300 J	0.09280
05/17/2022	--	417.95	<u>0.06810</u>	0.0039900	<u>0.04620</u>	1.46	<u>0.315</u>	1.45	<u>0.03970</u>	66.8	0.178	<u>0.258</u>
09/20/2022	--	417.59	<u>0.122</u>	0.04460	<u>0.04760</u>	1.05	<u>0.266</u>	<u>2.89</u>	<u>0.03570</u>	61.5	0.0200	<u>0.666</u>
04/27/2023	--	--	<u>0.285</u>	0.02450	<u>0.01910</u>	1.21	<u>0.232</u>	1.23	<u>0.03990</u>	79.9	0.00088000	<u>0.233</u>
07/25/2023	--	--	<u>0.05670</u>	0.03090	<u>0.01730</u>	0.677	<u>0.187</u>	1.36	<u>0.02110</u>	53.9	U(0.00500)	<u>0.281</u>
10/24/2023	--	--	0.009500	0.0029700	<u>0.0093400</u>	0.424	<u>0.05170</u>	0.629	U(0.000250)	89.5	U(0.00100)	0.05120
MW17-1												
03/29/2018	--	--	—	—	<u>2.90</u>	<u>6.00</u>	<u>1.20</u>	U (100)	—	—	<u>6.60</u>	<u>8.50</u>
09/07/2018	--	--	—	—	<u>0.18</u>	<u>4.80</u>	<u>3.30</u>	<u>80.0</u>	—	—	<u>26.0</u>	<u>18.0</u>
03/14/2019	--	415.28	—	—	<u>3.00</u>	<u>3.30</u>	<u>1.70</u>	<u>47.0</u>	—	—	<u>7.40</u>	<u>7.40</u>
07/30/2019	--	416.35	—	—	<u>0.36</u>	<u>3.90</u>	<u>3.40</u>	<u>88.0</u>	—	—	<u>9.20</u>	<u>14.9</u>
08/04/2020	--	419.63	—	—	<u>0.126</u>	<u>2.78</u>	<u>3.47</u>	<u>61.1</u>	—	—	<u>22.5</u>	<u>13.8</u>
10/15/2020	--	418.92	—	—	0.0231 J	<u>4.03</u>	<u>0.305</u>	<u>5.90</u>	—	—	0.254 J	<u>2.10</u>
03/30/2021	--	415.86	—	—	0.000535 J	<u>2.66</u>	<u>0.04010</u>	<u>2.59</u>	—	—	U (0.001)	0.178
10/12/2021	--	417.63	—	—	1.61 Q	<u>3.68</u>	1.03 E	<u>30.9</u>	—	—	5.27 Q	<u>3.69</u>
05/17/2022	--	417.95	<u>1.53</u>	<u>0.315</u>	<u>0.582</u>	<u>7.43</u>	<u>3.03</u>	<u>30.8</u>	<u>0.241</u>	60.3	<u>1.63</u>	<u>9.48</u>
09/21/2022	--	417.52	<u>0.761</u>	<u>0.172</u>	<u>0.36</u>	<u>4.20</u>	<u>1.41</u>	<u>15.0</u>	<u>0.138</u>	117	0.313	<u>4.20</u>
10/26/2022	--	417.18	—	—	<u>0.05850</u>	<u>4.44</u>	<u>0.603</u>	<u>6.34</u>	<u>0.06240</u>	143	0.04040	<u>1.62</u>
04/27/2023	--	--	<u>0.845</u>	<u>0.152</u>	<u>0.174</u>	<u>4.14</u>	<u>1.22</u>	<u>13.4</u>	<u>0.09230</u>	81.9	0.157	<u>3.20</u>
07/25/2023	--	418.06	<u>1.22</u>	<u>0.294</u>	<u>0.433</u>	<u>3.97</u>	<u>1.66</u>	<u>16.5</u>	<u>0.17</u>	89.7	0.0930	<u>4.34</u>
08/16/2023	--	417.81	<u>0.677</u>	<u>0.163</u>	<u>0.02190</u>	<u>4.34</u>	<u>0.606</u>	<u>8.10</u>	<u>0.08860</u>	51.9	0.0027900	<u>1.14</u>

	Well Screen Interval	Ground Water Elevator.	124-TMB	135-TMB	Benzene	DRO	Ethylbenzene	GRO	Naphthalene	Sodium	Toluene	Xylenes
Unit	ft	ft	ppm	ppm	ppm	ppm	ppm	ppm	ppm	ppm	ppm	ppm
GW Human Health Cleanup			0.056	0.06	0.0046	1.5	0.015	2.2	0.0017		1.1	0.19
09/27/2023	--	417.93	0.03090	<u>0.141</u>	<u>0.03120</u>	<u>2.44</u>	<u>0.193</u>	<u>6.54</u>	<u>0.05050</u>	73.5	0.0012800	<u>0.282</u>
10/24/2023	--	--	<u>0.27</u>	<u>0.06210</u>	<u>0.02150</u>	<u>2.44</u>	<u>0.337</u>	<u>4.61</u>	<u>0.01620</u>	96.2	0.0052200	<u>0.712</u>
MW17-2												
03/29/2018	--	--	—	—	U (0.30)	<u>12.0</u>	U (0.30)	<u>22.0</u>	—	—	<u>2.70</u>	<u>2.11</u>
09/07/2018	--	--	—	—	<u>0.18</u>	<u>15.0</u>	<u>0.66</u>	<u>17.0</u>	—	—	<u>3.20</u>	<u>4.50</u>
03/14/2019	--	415.28	—	—	<u>0.0470</u>	<u>10.0</u>	<u>0.0940</u>	<u>4.20</u>	—	—	0.94	<u>1.49</u>
07/29/2019	--	416.35	—	—	U (0.15)	<u>8.50</u>	<u>0.50</u>	<u>16.0</u>	—	—	<u>1.80</u>	<u>3.90</u>
08/04/2020	--	419.67	—	—	<u>0.05050</u>	<u>20.5</u>	<u>0.236</u>	<u>5.03</u>	—	—	0.477	<u>415</u>
10/15/2020	--	418.62	—	—	0.00395 J	<u>8.25</u>	<u>0.05080</u>	0.601	—	—	0.02350	<u>0.218</u>
03/30/2021	--	415.35	—	—	0.000952 J	<u>7.78</u>	0.01320	0.309	—	—	U (0.001)	0.02640
10/12/2021	--	418.57	—	—	0.00157 J	<u>3.22</u>	0.00324 J	0.0560 B,J	—	—	0.005900	0.0107 J
05/17/2022	--	418.02	<u>0.241</u>	<u>0.06790</u>	0.0032500	<u>7.44</u>	<u>0.618</u>	<u>4.50</u>	<u>0.02690</u>	70.9	0.0041700	<u>1.50</u>
09/21/2022	--	417.49	0.0020800	0.000324000	<u>0.03270</u>	<u>3.13</u>	0.0070200	0.194	0.000392000	206	0.001100	0.01980
10/26/2022	--	417.16	—	—	<u>0.04850</u>	<u>1.76</u>	0.0063800	0.227	U	146	0.000738000	0.01930
06/06/2023	--	417.83	0.04270	0.02320	<u>0.06030</u>	<u>2.43</u>	<u>0.182</u>	<u>2.38</u>	<u>0.02070</u>	133	0.0010700	<u>0.447</u>
07/25/2023	--	417.49	0.0031800	0.002300	<u>0.0081500</u>	0.866	0.003700	U(2.00)	0.0010400	90.4	U(0.00100)	0.0062100
08/16/2023	--	--	0.0056700	0.0039400	0.0042500	U(0.800)	0.0047700	0.168	<u>0.0029800</u>	71.8	U(0.00100)	0.007700
09/27/2023	--	417.95	0.000885000	0.0011300	<u>0.0053900</u>	0.628	0.000505000	0.222	0.000349000	69.4	U(0.00100)	0.0011300
10/24/2023	--	--	0.0021300	0.0025400	<u>0.0060900</u>	1.26	0.0015400	0.231	U(0.000250)	96.8	U(0.00100)	0.0032800
MW-10												
03/10/1994	--	418.07	—	—	<u>19.0</u>	—	<u>2.30</u>	—	—	—	<u>24.0</u>	<u>19.0</u>
09/09/1994	--	419.89	—	—	<u>15.2</u>	—	<u>0.90</u>	—	—	—	<u>18.0</u>	<u>14.9</u>
12/12/1994	--	418.10	—	—	<u>16.7</u>	—	<u>2.10</u>	—	—	—	<u>20.0</u>	<u>15.5</u>
08/15/1997	--	415.92	—	—	<u>8.30</u>	—	<u>1.16</u>	<u>77.0</u>	—	—	<u>14.4</u>	<u>9.35</u>
05/27/1999	--	415.09	—	—	<u>6.88</u>	<u>12.8</u>	<u>1.35</u>	<u>64.0</u>	—	—	<u>13.4</u>	<u>7.17</u>
04/17/2000	--	413.89	—	—	<u>1.86</u>	<u>5.84</u>	<u>0.887</u>	<u>35.0</u>	—	—	<u>7.06</u>	<u>3.47</u>
10/26/2000	--	417.44	—	—	<u>1.88</u>	<u>9.04</u>	<u>0.914</u>	<u>39.7</u>	—	—	<u>7.20</u>	<u>5.53</u>
12/13/2001	--	413.14	—	—	<u>2.70</u>	<u>10.1</u>	<u>1.59</u>	<u>53.8</u>	—	—	<u>9.60</u>	<u>7.73</u>
05/01/2002	--	414.55	—	—	<u>0.01220</u>	<u>1.96</u>	0.01370	1.10	—	—	0.007400	0.117
08/19/2002	--	417.86	—	—	<u>1.92</u>	<u>15.9</u>	<u>0.664</u>	<u>27.5</u>	—	—	<u>3.55</u>	<u>3.512</u>
11/05/2002	--	417.06	—	—	<u>0.04560</u>	<u>6.78</u>	<u>0.03680</u>	1.70	—	—	0.0053300	0.1189
03/19/2003	--	416.21	—	—	<u>0.477</u>	<u>12.9</u>	<u>0.319</u>	<u>8.80</u>	—	—	0.313	<u>1.404</u>
08/05/2003	--	418.43	—	—	<u>2.54</u>	<u>17.6</u>	<u>0.876</u>	<u>61.8</u>	—	—	<u>8.79</u>	<u>7.09</u>
03/08/2004	--	414.92	—	—	<u>0.198</u>	<u>10.3</u>	U (0.025)	<u>12.8</u>	—	—	0.912	<u>2.89</u>
09/15/2004	--	416.64	—	—	<u>0.08020</u>	<u>6.01</u>	<u>0.04970</u>	2.06	—	—	0.0023400	<u>0.446</u>
07/15/2005	--	417.82	—	—	<u>0.416</u>	<u>14.9</u>	<u>0.513</u>	<u>25.6</u>	—	—	<u>3.37</u>	<u>3.63</u>
07/27/2006	--	417.06	—	—	<u>0.413</u>	<u>16.3</u>	<u>0.714</u>	<u>32.5</u>	—	—	<u>5.30</u>	<u>4.88</u>
03/02/2007	--	414.23	—	—	<u>0.203</u>	<u>8.80</u>	<u>0.545</u>	<u>32.8</u>	—	—	<u>2.33</u>	<u>3.90</u>
10/17/2007	--	416.47	—	—	0.0032400	<u>6.43</u>	0.01050	1.15	—	—	0.0010200	0.04060
06/05/2008	--	415.69	—	—	<u>0.23</u>	<u>10.2</u>	<u>1.18</u>	<u>38.4</u>	—	—	<u>2.90</u>	<u>8.14</u>

	Well Screen Interval	Ground Water Elevator.	124-TMB	135-TMB	Benzene	DRO	Ethylbenzene	GRO	Naphthalene	Sodium	Toluene	Xylenes
Unit	ft	ft	ppm	ppm	ppm	ppm	ppm	ppm	ppm	ppm	ppm	ppm
GW Human Health Cleanup			0.056	0.06	0.0046	1.5	0.015	2.2	0.0017		1.1	0.19
09/29/2008	--	417.20	—	—	0.0013900	3.67	0.0120	1.18	—	—	0.0040300	0.07770
02/25/2009	--	--	—	—	0.07780	30.3	1.18	43.4	—	—	2.70	8.89
07/21/2009	--	416.71	—	—	0.0140	11.8	1.26	47.3	—	—	1.77	12.2
03/17/2010	--	413.98	—	—	0.002700	16.2	1.20	92.0	—	—	1.50	9.50
09/15/2010	--	416.60	—	—	0.0063500	21.3	0.776	16.2	—	—	0.09020	4.06
03/22/2011	--	414.01	—	—	0.0042500	17.4	0.678	16.0	—	—	0.01950	3.15
09/01/2011	--	417.49	—	—	0.0067300	30.5	0.498	22.5	—	—	0.09080	3.00
03/13/2012	--	414.42	—	—	U (0.010)	10.3	0.118	4.24	—	—	U (0.010)	0.679
07/23/2012	--	416.97	—	—	0.0022600	2.57	0.0016100	0.32	—	—	0.001200	U (0.0030)
02/21/2013	--	414.24	—	—	0.000877000	4.55	0.0070200	2.69	—	—	0.0015600	0.166
08/13/2013	--	416.54	—	—	0.0024500	10.3	0.02160	1.59	—	—	0.0045500	0.07550
03/19/2014	--	414.30	—	—	0.000642000	7.82	0.01450	1.98	—	—	0.0040400	0.119
07/31/2014	--	419.65	—	—	0.0110	10.0	0.0470	5.00	—	—	0.002400	1.20
03/03/2015	--	414.98	—	—	0.00067000	3.20	0.00200	0.23	—	—	U (0.0005)	0.006300
07/27/2015	--	416.16	—	—	0.001200	4.00	0.003700	0.65	—	—	0.00200	0.0110
02/23/2016	--	415.20	—	—	U (0.001)	2.70	U (0.001)	U (0.05)	—	—	U (0.001)	U (0.001)
10/06/2016	--	418.72	—	—	U (0.001)	2.30	U (0.001)	U (0.05)	—	—	U (0.001)	U (0.001)
03/16/2017	--	414.92	—	—	0.0110	6.70	0.16	3.70	—	—	0.002700	0.489
03/29/2018	--	414.60	—	—	0.0220	13.0	0.35	9.60	—	—	0.0100	1.30
09/07/2018	--	418.69	—	—	0.0270	13.0	0.27	5.20	—	—	0.005200	1.283
03/13/2019	--	415.23	—	—	0.0160	8.00	0.21	3.50	—	—	U (0.002)	0.726
07/29/2019	--	416.33	—	—	U (0.15)	13.0	0.20	5.60	—	—	U (0.1)	0.82
08/04/2020	--	419.74	—	—	0.05770	1.90	0.597	4.20	—	—	0.142	1.89
10/15/2020	--	418.63	—	—	0.0050600	1.74	0.06490	1.12	—	—	0.03870	0.198
10/12/2021	--	417.98	—	—	0.000209 J,Q	2.43	0.00142 J	0.280 B,J	—	—	U (0.005)	0.00214 J
05/17/2022	--	418.01	0.06940	0.01850	0.0014700	3.65	0.03180	0.858	0.0028600	68.8	0.00300	0.09130
09/20/2022	--	417.45	0.02010	0.0059600	0.002100	1.34	0.0095500	0.105	0.001500	111	0.000407000	0.0250
04/27/2023	--	--	0.02660	0.0071800	0.0072900	1.43	0.02070	0.568	0.0041500	80.5	0.000835000	0.04210
07/25/2023	--	417.87	0.02650	0.0086600	0.01410	1.88	U(0.00100)	0.556	0.0025700	62.6	U(0.00100)	0.03110
10/24/2023	--	--	0.04050	0.01380	0.0027100	0.354	0.02050	0.461	0.000436000	68.3	U(0.00100)	0.02760
MW-11												
09/28/2012	--	416.27	—	—	0.235	19.4	0.873	40.3	—	—	0.594	5.52
02/21/2013	--	414.26	—	—	0.01770	5.72	1.61	41.1	—	—	0.0070700	7.20
08/13/2013	--	416.53	—	—	0.257	7.79	0.60	5.45	—	—	0.01520	1.15
03/19/2014	--	414.33	—	—	0.09330	14.1	0.915	22.1	—	—	0.05480	3.28
07/31/2014	--	419.65	—	—	0.0880	7.00	0.51	10.0	—	—	0.0320	2.00
03/03/2015	--	414.99	—	—	0.0380	3.00	0.60	17.0	—	—	0.0710	2.90
07/27/2015	--	416.2	—	—	0.46	13.0	1.50	34.0	—	—	0.16	6.60
02/23/2016	--	415.22	—	—	U (0.001)	1.20	U (0.001)	0.13	—	—	U (0.001)	0.002500
10/06/2016	--	418.74	—	—	U (0.001)	0.77	0.006800	0.20	—	—	U (0.001)	0.002500

	Well Screen Interval	Ground Water Elevator.	124-TMB	135-TMB	Benzene	DRO	Ethylbenzene	GRO	Naphthalene	Sodium	Toluene	Xylenes
Unit	ft	ft	ppm	ppm	ppm	ppm	ppm	ppm	ppm	ppm	ppm	ppm
GW Human Health Cleanup			0.056	0.06	0.0046	1.5	0.015	2.2	0.0017		1.1	0.19
03/16/2017	--	414.93	—	—	U (0.2)	6.20	0.89	14.0	—	—	0.48	3.99
07/07/2017	--	416.97	—	—	0.11	7.40	0.40	7.10	—	—	0.26	1.76
03/29/2018	--	414.62	—	—	U (0.15)	8.00	0.92	U (90)	—	—	0.71	6.10
09/07/2018	--	418.71	—	—	0.0680	3.20	0.57	7.80	—	—	0.0660	2.29
03/13/2019	--	415.23	—	—	0.10	9.90	0.85	19.0	—	—	0.30	5.00
07/29/2019	--	416.28	—	—	U (0.15)	9.80	0.67	15.0	—	—	0.16	4.96
08/04/2020	--	419.64	—	—	0.0570	3.51	0.434	5.63	—	—	0.0040300	1.75
10/15/2020	--	418.6	—	—	0.000929 J	1.06 J	0.01060	0.386 J	—	—	0.0012100	0.0810
10/12/2021	--	417.94	—	—	0.0010300	1.97	0.492 Q	5.40	—	—	0.000688 J	1.38
05/17/2022	--	418.05	0.531	0.126	0.0071200	3.70	1.29	6.62	0.161	72.1	0.0079300	2.19
09/20/2022	--	417.45	0.227	0.0610	0.0057800	1.63	0.315	2.53	0.04410	102	0.000431000	0.733
06/06/2023	--	417.79	0.263	0.01240	0.01740	1.46	0.479	1.80	0.07470	74.3	0.000332000	0.526
07/25/2023	--	417.75	0.182	0.07360	0.01650	0.553	0.129	1.85	0.01990	57.3	U(0.0200)	0.238
10/24/2023	--	--	0.188	0.0620	0.008200	0.60	0.07610	1.77	0.0091500	63.3	U(0.00100)	0.07860
MW-12												
09/28/2012	--	416.30	—	—	0.0043800	2.74	3.51	165	—	—	13.9	19.5
02/21/2013	--	414.30	—	—	0.0120	3.66	2.69	71.1	—	—	7.69	12.8
08/13/2013	--	416.54	—	—	0.03340	6.05	1.00	22.6	—	—	7.30	6.21
09/24/2013	--	--	—	—	0.0091300	7.11	0.344	8.35	—	—	1.65	1.72
11/19/2013	--	415.65	—	—	0.01170	11.7	0.527	13.5	—	—	1.83	2.19
03/19/2014	--	414.40	—	—	0.01280	11.4	0.663	27.9	—	—	2.24	5.34
07/31/2014	--	419.67	—	—	U (0.0005)	0.50	0.002700	0.18	—	—	0.006300	0.0150
03/03/2015	--	416.05	—	—	U (0.0005)	1.20	0.0220	6.80	—	—	0.0100	0.24
07/27/2015	--	416.21	—	—	0.00057000	0.99	0.0260	3.20	—	—	0.0110	0.19
02/23/2016	--	415.28	—	—	U (0.001)	0.32	U (0.001)	U (0.05)	—	—	U (0.001)	U (0.001)
10/06/2016	--	418.79	—	—	U (0.001)	0.39	U (0.001)	U (0.05)	—	—	U (0.001)	U (0.001)
03/16/2017	--	415.00	—	—	U (0.02)	1.50	0.30	3.80	—	—	U (0.02)	0.52
07/07/2017	--	417.04	—	—	U (0.002)	1.40	0.13	2.80	—	—	U (0.04)	0.38
03/29/2018	--	414.69	—	—	U (0.003)	0.58	U (0.003)	2.00	—	—	U (0.002)	U (0.002)
09/07/2018	--	418.78	—	—	U (0.0004)	0.56	0.0190	1.10	—	—	U (0.001)	0.0630
03/13/2019	--	415.30	—	—	U (0.003)	0.78	0.0100	1.30	—	—	U (0.002)	0.0550
07/30/2019	--	416.38	—	—	U (0.003)	0.47	U (0.003)	0.26	—	—	U (0.002)	0.003900
08/03/2020	--	422.58	—	—	0.000353000	0.852	0.05380	1.23	—	—	0.03640	0.487
10/14/2020	--	418.68	—	—	0.01920	0.658 J	0.123	1.08	—	—	0.000817 J	0.425
03/30/2021	--	415.36	—	—	0.000395 J	1.26	0.02210	2.30	—	—	0.000853 J	0.06760
10/12/2021	--	418.00	—	—	0.000217 J	0.989	0.07220	1.93	—	—	0.0021500	0.50
05/17/2022	--	418.03	0.116	0.0250	0.000342000	0.745	0.01840	0.547	0.000545000	66.9	0.000613000	0.0940
09/21/2022	--	417.55	0.05720	0.02380	U(0.0240	0.787	0.0980	0.528	0.005800	66.5	0.0024300	0.188
04/27/2023	--	--	0.04830	0.04420	U(0.00100)	0.614	0.01980	0.662	0.0073700	56.0	0.000298000	0.02720
07/25/2023	--	417.81	0.01680	0.01040	0.0079600	0.336	0.06610	0.43	0.0039700	56.3	U(0.00100)	0.118

	Well Screen Interval	Ground Water Elevator.	124-TMB	135-TMB	Benzene	DRO	Ethylbenzene	GRO	Naphthalene	Sodium	Toluene	Xylenes
Unit	ft	ft	ppm	ppm	ppm	ppm	ppm	ppm	ppm	ppm	ppm	ppm
GW Human Health Cleanup			0.056	0.06	0.0046	1.5	0.015	2.2	0.0017		1.1	0.19
10/24/2023	--	--	U(0.00100)	0.0010900	0.0054300	U(0.840)	0.02920	0.196	0.000731000	110	0.0013400	0.0083800
MW-13												
09/28/2012	--	416.31	—	—	U (0.0005)	0.738	0.02630	8.11	—	—	0.03160	0.609
02/21/2013	--	414.31	—	—	0.001300	1.90	0.01250	0.649	—	—	U (0.0005)	0.167
08/13/2013	--	416.55	—	—	U (0.0005)	0.839	U (0.0005)	U (0.05)	—	—	U (0.0005)	U (0.0015)
09/24/2013	--	--	—	—	U (0.0005)	0.736	U (0.0005)	U (0.05)	—	—	U (0.0005)	U (0.0015)
11/19/2013	--	415.48	—	—	U (0.0005)	0.478	U (0.0005)	U (0.05)	—	—	0.000751000	0.0016800
03/18/2014	--	414.42	—	—	0.000671000	1.13	U (0.0005)	0.05930	—	—	0.000846000	0.0020800
07/31/2014	--	419.67	—	—	U (0.0005)	U (0.42)	U (0.001)	U (0.05)	—	—	U (0.001)	U (0.001)
03/03/2015	--	415.04	—	—	0.0200	0.62	0.0280	0.82	—	—	U (0.0005)	0.13
07/27/2015	--	416.24	—	—	U (0.0005)	0.58	0.001400	U (0.05)	—	—	U (0.0005)	0.004600
02/23/2016	--	415.31	—	—	U (0.001)	2.30	0.009600	1.00	—	—	U (0.001)	0.0730
10/06/2016	--	418.80	—	—	U (0.001)	0.65	U (0.001)	U (0.05)	—	—	U (0.001)	0.005800
03/16/2017	--	415.02	—	—	U (0.002)	0.44	U (0.0053)	0.15	—	—	U (0.002)	0.0130
07/07/2017	--	417.06	—	—	U (0.002)	0.32	U (0.003)	U (1.0)	—	—	U (0.002)	U (0.002)
03/29/2018	--	414.70	—	—	U (0.003)	0.45	U (0.003)	U (1)	—	—	U (0.002)	U (0.002)
09/07/2018	--	418.76	—	—	U (0.0004)	0.43	U (0.001)	U (0.15)	—	—	U (0.001)	U (0.002)
03/13/2019	--	415.34	—	—	U (0.003)	0.36	0.007200	U (1.3)	—	—	U (0.002)	0.009400
07/29/2019	--	416.37	—	—	U (0.003)	1.10	0.008500	0.45	—	—	U (0.002)	0.02140
08/03/2020	--	419.57	—	—	0.000323000	0.554	0.04390	1.01	—	—	0.03510	0.454
10/14/2020	--	418.67	—	—	0.0180	1.30	0.155	1.86	—	—	0.01080	0.63
03/30/2021	--	415.41	—	—	0.00019 J	0.341 J	0.0036100	0.139 B	—	—	U (0.001)	0.0070500
10/12/2021	--	418.00	—	—	U (0.001)	0.538 J	0.000274 J	0.0684 B,J	—	—	U (0.001)	0.0076900
09/21/2022	--	417.54	0.01530	0.0074900	0.0079700	0.569	0.03090	0.293	U(0.000250)	64.1	0.001200	0.07240
06/06/2023	--	417.91	0.000842000	0.00014000	0.000573000	0.659	0.0120	0.218	0.0013400	85.2	U(0.00100)	0.01010
07/25/2023	--	416.86	0.0034300	0.0022400	0.0022500	0.356	0.01640	0.20	U(0.000250)	55.2	U(0.00100)	0.02290
10/24/2023	--	--	0.0064400	0.0036700	0.0029900	U(0.840)	0.01570	0.111	U(0.000250)	140	0.000576000	0.02250
MW-16												
02/26/1992	--	418.29	—	—	0.00400	—	U	—	—	—	U	U
06/04/1992	--	418.41	—	—	0.00300	—	U	—	—	—	U	0.00700
11/30/1992	--	416.60	—	—	0.51	—	0.0560	—	—	—	0.0940	0.15
02/24/1993	--	418.13	—	—	0.41	—	0.0360	—	—	—	0.0330	0.0840
08/18/1993	--	420.26	—	—	0.0990	—	U	—	—	—	U	0.0140
11/23/1993	--	419.59	—	—	0.0390	—	U	—	—	—	U	0.00400
03/10/1994	--	418.28	—	—	0.00500	—	U	—	—	—	0.00100	U
06/01/1994	--	418.82	—	—	0.0220	—	0.00300	—	—	—	U	0.00300
09/08/1994	--	420.22	—	—	U	—	U	—	—	—	U	U
12/14/1994	--	418.22	—	—	0.0120	—	0.00100	—	—	—	U	U
12/20/1995	--	414.53	—	—	0.0550	—	U	—	—	—	U	0.00300
05/16/1996	--	415.78	—	—	0.00700	—	U	—	—	—	U	U

	Well Screen Interval	Ground Water Elevator	124-TMB	135-TMB	Benzene	DRO	Ethylbenzene	GRO	Naphthalene	Sodium	Toluene	Xylenes
Unit	ft	ft	ppm	ppm	ppm	ppm	ppm	ppm	ppm	ppm	ppm	ppm
GW Human Health Cleanup			0.056	0.06	0.0046	1.5	0.015	2.2	0.0017		1.1	0.19
08/15/1996	--	416.58	—	—	U	—	U	—	—	—	U	U
12/09/1996	--	415.43	—	—	<u>0.007100</u>	—	U	—	—	—	U	U
03/20/1997	--	414.40	—	—	<u>0.005600</u>	—	U	—	—	—	U	U
11/18/1997	--	415.22	—	—	0.0013400	—	U	—	—	0.0010100	0.0013500	U
05/01/1998	--	414.38	—	—	<u>0.0056700</u>	0.534	0.0019300	0.0890	—	—	0.0030800	0.0073900
10/14/1998	--	416.59	—	—	U	0.281	U	U	—	—	U	0.0022200
05/27/1999	--	415.29	—	—	0.0020300	<u>2.64</u>	U	U	—	—	U	U
11/05/1999	--	415.51	—	—	U	<u>13.0</u>	U	U	—	—	U	U
04/17/2000	--	414.15	—	—	0.0030500	<u>3.66</u>	U	U	—	—	U	U
10/26/2000	--	417.47	—	—	0.0018600	<u>3.98</u>	U	U	—	—	0.0026100	0.00300
05/30/2001	--	413.63	—	—	0.0007000	<u>6.65</u>	U	U	—	—	U	U
12/13/2001	--	413.23	—	—	<u>0.0480</u>	<u>5.29</u>	0.01090	0.90	—	—	0.302	0.05540
08/19/2002	--	417.85	—	—	U (0.0005)	U (0.5)	U (0.002)	U (0.09)	—	—	U (0.002)	0.0089600
11/05/2002	--	417.07	—	—	0.000589000	0.595	U (0.002)	U (0.09)	—	—	U (0.002)	0.0023400
03/19/2003	--	416.23	—	—	0.000531000	1.10	U (0.002)	U (0.09)	—	—	0.0065300	0.0046900
03/08/2004	--	414.95	—	—	U (0.0005)	<u>2.85</u>	U (0.0005)	0.0720	—	—	0.02880	U (0.001)
09/15/2004	--	416.65	—	—	0.0006000	1.36	U (0.0005)	0.05210	—	—	0.01430	U (0.0015)
01/10/2005	--	414.70	—	—	0.000648000	1.24	U (0.0005)	0.175	—	—	0.08860	0.0022100
07/15/2005	--	417.99	—	—	0.0007000	1.06	U (0.0005)	U (0.05)	—	—	U (0.0005)	U (0.0015)
02/16/2006	--	414.58	—	—	U (0.0005)	<u>2.09</u>	U (0.0005)	0.06410	—	—	0.02250	U (0.0015)
07/27/2006	--	417.08	—	—	0.000638000	1.06	U (0.0005)	U (0.05)	—	—	0.01080	U (0.0015)
03/02/2007	--	414.25	—	—	U (0.0005)	<u>1.95</u>	U (0.0005)	U (0.05)	—	—	0.0020600	U (0.0015)
10/17/2007	--	416.62	—	—	U (0.0025)	<u>6.53</u>	U (0.0025)	U (0.25)	—	—	0.0031800	U (0.0075)
06/05/2008	--	415.88	—	—	U (0.0005)	<u>4.40</u>	U (0.0005)	0.07610	—	—	0.01170	U (0.0015)
09/29/2008	--	417.26	—	—	U (0.0005)	<u>2.69</u>	U (0.0005)	U (0.05)	—	—	U (0.0005)	U (0.0015)
02/25/2009	--	414.49	—	—	U (0.0005)	<u>3.44</u>	U (0.0005)	0.06330	—	—	0.01350	U (0.0015)
07/21/2009	--	416.76	—	—	U (0.0005)	0.564	U (0.001)	U (0.05)	—	—	U (0.001)	U (0.003)
03/17/2010	--	413.98	—	—	U (0.001)	0.586	U (0.001)	U (0.05)	—	—	U (0.001)	U (0.002)
09/15/2010	--	416.52	—	—	U (0.0005)	<u>2.35</u>	0.000796000	U (0.05)	—	—	U (0.0005)	0.0050800
03/22/2011	--	413.98	—	—	U (0.0005)	<u>2.82</u>	U (0.0005)	0.221	—	—	0.08520	U (0.0015)
09/01/2011	--	417.42	—	—	U (0.0005)	<u>2.38</u>	U (0.0005)	U (0.05)	—	—	U (0.0005)	U (0.0015)
03/13/2012	--	414.39	—	—	U (0.0005)	<u>4.18</u>	U (0.0005)	0.241	—	—	0.08450	U (0.0015)
07/23/2012	--	417.64	—	—	U (0.0005)	1.04	U (0.0010)	U (0.05)	—	—	U (0.0010)	U (0.0030)
02/21/2013	--	414.34	—	—	U (0.0005)	1.38	U (0.0005)	0.182	—	—	0.0660	U (0.0015)
08/13/2013	--	416.56	—	—	U (0.0005)	<u>3.61</u>	U (0.0005)	U (0.05)	—	—	0.0014300	U (0.0015)
03/18/2014	--	414.51	—	—	U (0.0005)	<u>3.17</u>	U (0.0005)	0.178	—	—	0.06940	U (0.0015)
07/31/2014	--	419.70	—	—	U (0.0005)	<u>2.30</u>	U (0.001)	U (0.05)	—	—	U (0.001)	U (0.001)
03/03/2015	--	415.20	—	—	<u>0.0150</u>	1.30	0.007300	0.74	—	—	0.0390	0.13
07/27/2015	--	416.22	—	—	<u>0.006800</u>	0.81	0.005700	0.42	—	—	0.001600	0.0710
02/23/2016	--	415.26	—	—	U (0.001)	0.40	U (0.001)	U (0.05)	—	—	U (0.001)	0.005800
10/06/2016	--	418.77	—	—	U (0.001)	0.35	U (0.001)	U (0.05)	—	—	U (0.001)	0.002400

	Well Screen Interval	Ground Water Elevator	124-TMB	135-TMB	Benzene	DRO	Ethylbenzene	GRO	Naphthalene	Sodium	Toluene	Xylenes
Unit	ft	ft	ppm	ppm	ppm	ppm	ppm	ppm	ppm	ppm	ppm	ppm
GW Human Health Cleanup			0.056	0.06	0.0046	1.5	0.015	2.2	0.0017		1.1	0.19
03/16/2017	--	414.98	—	—	U (0.002)	0.88	U (0.003)	U (0.05)	—	—	U (0.002)	U (0.002)
07/07/2017	--	417.02	—	—	U (0.002)	3.70	U (0.003)	U (1.0)	—	—	U (0.002)	U (0.003)
09/07/2018	--	418.73	—	—	U (0.0004)	0.34	U (0.001)	U (0.15)	—	—	U (0.001)	U (0.002)
03/13/2019	--	415.27	—	—	U (0.003)	1.90	U (0.003)	U (1.3)	—	—	U (0.002)	U (0.003)
07/30/2019	--	415.37	—	—	U (0.003)	0.39	U (0.003)	U (0.25)	—	—	U (0.002)	0.00300
10/14/2020	--	418.63	—	—	0.01440	0.918	0.000399 J	0.0468 J	—	—	0.000556 J	0.02410
03/30/2021	--	415.38	—	—	U (0.001)	0.97	U (0.001)	0.0233 BJ	—	—	U (0.001)	0.000994 J
10/12/2021	--	418.00	—	—	U (0.001)	1.57	U (0.001)	U (0.1)	—	—	U (0.001)	0.000223 J
05/17/2022	--	418.08	0.000654000	0.000128000	U (0.00100)	0.967	U (0.00100)	0.02970	U (0.000250)	40.4	U (0.00100)	0.000339000
09/20/2022	FP	417.51	FP	FP	FP	FP	FP	FP	FP	FP	FP	FP
04/27/2023	--	--	U (0.00100)	U (0.00100)	0.000111000	3.48	U (0.00100)	0.03310	U (0.000250)	48.8	0.00072000	U (0.00300)
07/25/2023	--	417.94	U (0.00100)	U (0.00100)	U (0.00100)	0.84	U (0.00100)	U (0.100)	U (0.000250)	63.7	U (0.00100)	U (0.00100)
10/24/2023	--	--	U (0.00100)	U (0.00100)	U (0.00100)	0.497	U (0.00100)	U (0.100)	U (0.000250)	43.5	U (0.00100)	U (0.00100)
RM-1												
10/10/2012	--	416.29	—	—	0.04250	1.40	0.0840	7.60	—	—	6.09	1.80
02/21/2013	--	414.27	—	—	0.000539000	0.92	0.942	9.80	—	—	15.4	0.51
08/13/2013	--	416.55	—	—	0.00072000	1.30	3.08	1.80	—	—	0.09220	6.83
09/24/2013	--	--	—	—	0.006700	1.70	0.131	27.2	—	—	0.23	16.7
11/19/2013	--	415.53	—	—	0.0550	12.6	0.20	175	—	—	0.33	1.32
03/19/2014	--	414.37	—	—	0.02130	10.8	U (0.001)	2.81	—	—	0.68	2.06
07/31/2014	--	419.58	—	—	0.02510	1.23	0.0960	4.70	—	—	2.83	0.71
03/03/2015	--	402.63	—	—	0.00261 J	1.20	0.593	3.50	—	—	7.25	1.60
07/27/2015	--	--	—	—	U (0.15)	0.74	2.14	8.40	—	—	0.137	5.09
02/23/2016	--	414.75	—	—	0.008700	1.50	0.246	14.7	—	—	0.40	11.3
10/06/2016	--	417.91	—	—	0.0840	17.5	0.23	69.9	—	—	0.69	1.89
07/07/2017	--	417.04	—	—	0.02680	10.7	0.45	4.26	—	—	0.77	1.55
09/06/2017	--	--	—	—	0.04320	2.31	0.36	6.10	—	—	0.201	2.73
09/07/2018	--	413.04	—	—	0.000358 J	1.10	0.568	12.0	—	—	12.2	2.90
07/30/2019	--	415.38	—	—	(0.003) U	3.30	1.80	12.0	—	—	0.000503 J	2.55
10/24/2019	--	--	—	—	0.00500	5.20	0.142	11.9	—	—	0.0380	10.4
08/04/2020	--	417.00	—	—	U (0.001)	13.2	0.15	39.9	—	—	0.74	1.25
10/15/2020	--	--	—	—	U (0.0005)	9.27	0.27	5.34	—	—	0.93	1.49
10/12/2021	--	417.82	—	—	0.02460	2.22	0.20	4.30	—	—	0.15	2.00
09/20/2022	--	417.43	0.826	0.32	0.000939000	3.32	0.266	7.88	0.06990	62.8	0.002600	1.98
06/06/2023	--	--	0.795	0.331	0.0011200	4.11	0.281	6.84	0.06060	58.6	0.0013900	2.15
07/25/2023	--	417.93	0.805	0.349	0.0011800	3.18	0.331	6.52	0.09420	81.6	0.0014300	2.59
08/16/2023	--	417.70	0.597	0.235	U (0.0200)	1.52	0.163	5.03	0.06130	66.1	U (0.00200)	1.25
10/24/2023	--	--	0.477	0.266	0.0026600	2.35	0.186	5.53	0.03950	85.6	U (0.00100)	1.22
RM-2												
08/29/2019	--	--	—	—	0.0017900	0.384 J	0.01570	0.479	—	—	0.0020900	0.06660

	Well Screen Interval	Ground Water Elevator.	124-TMB	135-TMB	Benzene	DRO	Ethylbenzene	GRO	Naphthalene	Sodium	Toluene	Xylenes
Unit	ft	ft	ppm	ppm	ppm	ppm	ppm	ppm	ppm	ppm	ppm	ppm
GW Human Health Cleanup			0.056	0.06	0.0046	1.5	0.015	2.2	0.0017		1.1	0.19
10/24/2019	--	--	—	—	0.004600	0.45	<u>0.0890</u>	2.00	—	—	0.0580	<u>0.342</u>
08/04/2020	--	--	—	—	U (0.001)	U (0.800)	0.000505000	0.01350	—	—	U (0.001)	0.000565000
10/15/2020	--	--	—	—	<u>0.02260</u>	1.49	<u>0.274</u>	<u>3.98</u>	—	—	0.413	<u>1.24</u>
03/30/2021	--	--	—	—	<u>0.02970</u>	1.21	<u>0.352</u>	<u>4.16</u>	—	—	0.05410	<u>0.74</u>
10/12/2021	--	417.79	—	—	0.000496 J	0.650 J	<u>0.04010</u>	0.645	—	—	U (0.001)	0.06170
05/17/2022	--	418.05	0.0014900	0.000547000	0.000133000	U(0.840)	0.004900	0.133	0.000327000	25.8	U(0.00100)	0.0018300
09/20/2022	--	--	<u>0.147</u>	0.05490	<u>0.04840</u>	0.95	<u>0.286</u>	<u>2.96</u>	<u>0.03740</u>	60.4	0.02710	<u>0.756</u>
04/27/2023	--	--	0.05360	0.03510	<u>0.0086100</u>	0.739	<u>0.199</u>	1.88	<u>0.03130</u>	51.4	0.000523000	<u>0.331</u>
06/06/2023	--	--	0.05470	0.02860	0.0029400	0.824	<u>0.154</u>	1.15	<u>0.01820</u>	58.5	0.000349000	<u>0.395</u>
07/25/2023	--	417.51	<u>0.06850</u>	0.03750	<u>0.02290</u>	0.417	<u>0.204</u>	1.80	<u>0.03050</u>	54.6	0.000486000	<u>0.443</u>
08/16/2023	--	--	<u>0.05940</u>	0.03060	<u>0.01890</u>	U(0.800)	<u>0.183</u>	1.82	<u>0.02560</u>	47.9	0.0010700	<u>0.365</u>
09/27/2023	--	--	<u>0.06070</u>	0.02580	<u>0.01120</u>	0.869	<u>0.193</u>	1.38	<u>0.01830</u>	54.0	U(0.00100)	<u>0.309</u>
10/24/2023	--	--	0.05510	0.02710	<u>0.0130</u>	0.903	<u>0.197</u>	1.60	<u>0.01850</u>	56.0	U(0.00100)	<u>0.283</u>