

FILE: M:\Projects\BPXA\Tuboscope\Maps\Comprehensive RFI 2008 - 2018\Soil\Drafts\DraftContours\Figure ES-1 1,4-Dioxane Summary.mxd. REVISED: 01/14/2021. SCALE: 1:2,171 when printed at 11x17  
 DRAWN BY: Jake Sullivan & Tyler Harris



- Legend**
- 1,4-Dioxane Results in Surface Water**
- ▲ Above TII
  - ▲ Non-Detect
- 1,4-Dioxane Results In Soil**
- ▲ Above TII
  - Below TII
  - Non-Detect
- 1,4-Dioxane Results in SPGW**
- ▲ Above TII
  - Non-Detect
- 1,4-Dioxane Groundwater Isocontour (Lowest Tier II Action Level)
  - 1,4-Dioxane Soil Isocontour (Lowest Tier II Action Level)
  - ▭ Vertical Curtain Liner
  - ▭ Horizontal Liner
  - - - Former Building Footprint
  - - - Former Drainage Ditch

**Notes**

Figure shows the extent of 1,4-dioxane in soil, suprapermafrost groundwater, and surface water.

Lowest Tier II Action Level for 1,4-Dioxane In Soil: 2.8 milligrams per kilogram (mg/kg)

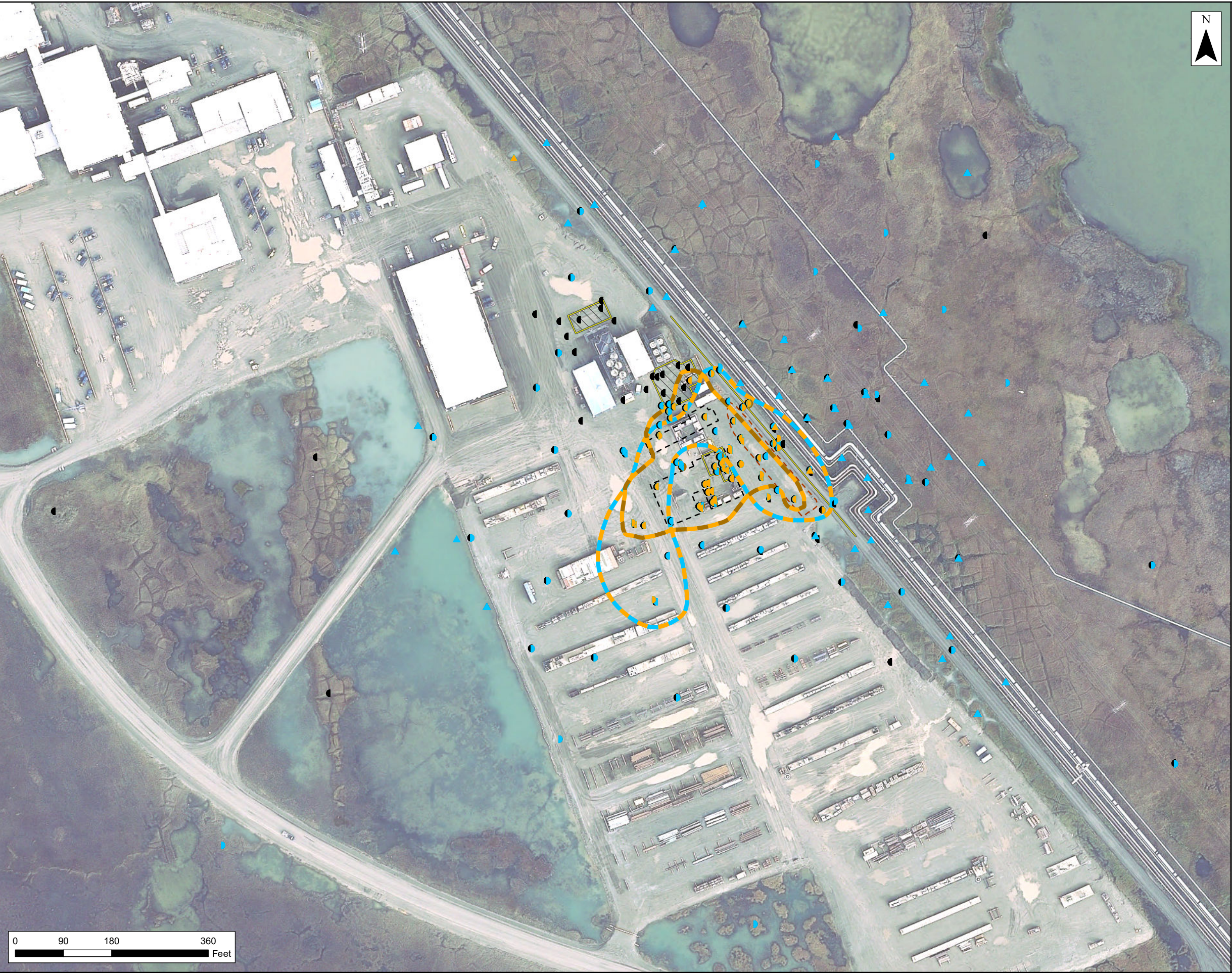
Lowest Tier II Action Level for 1,4-Dioxane in Groundwater : 0.46 micrograms per liter (ug/L).

**Figure ES-1**  
**1,4-Dioxane Concentration**  
**Summary Figure**  
 Comprehensive RFI Report  
 Former Tuboscope Site  
 Prudhoe Bay, Alaska

Source: Esri - World Topographic Map; NAD 1983 StatePlane Alaska 4 FIPS 5004 Feet



FILE: M:\Projects\BPXA\Tuboscope\Comprehensive RFI 2008 - 2018\Soil\Drafts\DraftContours\Figure ES-2 Chlorinated Solvents Summary.mxd . REVISED: 05/12/2022 . SCALE: 1:2,171 when printed at 11x17  
 DRAWN BY: Jake Sullivan & Tyler Harris



**Legend**

**Surface Water Location**

- ▲ Above TII
- ▲ Below TII
- ▲ Not Detected

**Chlorinated Solvent Results in SPGW**

- Above TII
- Below TII
- Not Detected

**Chlorinated Solvent Results In Soil**

- Above TII
- Below TII
- Not Detected
- Chlorinated Solvent Groundwater Isocontour (Lowest Tier II Action Level)
- Chlorinated Solvent Soil Isocontour (Lowest Tier II Action Level)
- ▭ Vertical Curtain Liner
- ▭ Horizontal Liner
- - - Former Building Footprint
- - - Former Drainage Ditch

**Notes**

Figure shows the extent of Chlorinated Solvents in suprapermafrost groundwater and surface water.

**Figure ES-2**  
**Chlorinated Solvents**  
**Summary Figure**  
 Comprehensive RFI Report  
 Former Tuboscope Site  
 Prudhoe Bay, Alaska

0 90 180 360  
 Feet





**Legend**

**Surface Water Location**

- ▲ Above TII
- ▲ Below TII
- ▲ Not Detected TII

**Hydrocarbon Results in SPGW**

- Above TII
- Below TII
- Not Detected TII

**Hydrocarbon Results In Soil**

- Above TII
- Below TII
- Not Detected TII

- Hydrocarbon Groundwater Isocontour (Lowest Tier II Action Level)
- Hydrocarbon Soil Isocontour (Lowest Tier II Action Level)
- ▭ Vertical Curtain Liner
- ▭ Horizontal Liner
- - - Former Building Footprint
- - - Former Drainage Ditch

**Notes**

This figure shows the extent of petroleum hydrocarbon constituents present at concentrations greater than the lowest Tier II Action Level and is based on the following constituents: BTEX compounds (benzene, toluene, ethylbenzene, xylenes), polycyclic aromatic hydrocarbons (2-methylnaphthalene, benzo(a)anthracene, benzo(a)pyrene, benzo(b)fluoranthene, benzo(e)pyrene, benzo(g,h,i)perylene, benzo(g,h,i)perylene, benzo(k)fluoranthene, dibenz(a,h)anthracene, indeno(1,2,3-cd)pyrene, and naphthalene), 1,2,4-trimethylbenzene, 1,3,5-trimethylbenzene, isopropylbenzene, n-propylbenzene, and p-isopropyltoluene, isopropylbenzene, dibenzofuran.

**Figure ES-3  
Hydrocarbons  
Summary Figure**  
Comprehensive RFI Report  
Former Tuboscope Site  
Prudhoe Bay, Alaska

