



Press Release

COMMISSIONER'S OFFICE

FOR IMMEDIATE RELEASE

No. 13-53

October 2, 2013

Lorinda Lhotka, Acting FSS Program Manager, (907) 451-2119

Safeway Angel Food Cake Recalled for Undeclared Soy and Milk Allergens

(JUNEAU, AK) – Safeway has issued a recall for six Angel Food Cake products that contain the undeclared allergens, soy and milk. People who are allergic or have a severe sensitivity to soy or milk, run the risk of serious or life-threatening allergic reaction if they consume these products.

The affected products can be identified by the Sell By Dates located on the product label or the white scale label.

Product Name	Sell By Dates
Angel Food Cake (UPC# 2113010510)	9/1/13 to 10/1/2013
Holiday Decorated Angel Food Cake	9/1/13 to 10/1/2013
Angel Food Cups 4 Count	9/1/13 to 10/1/2013
Cake Angel Food Loaf	9/1/13 to 10/1/2013
Angel Food Cake Fruit Topped	9/1/13 to 10/1/2013
Angel Food Cake Fruit Topped	9/1/13 to 10/2/2013

Alaska DEC has confirmed these products were available in Alaska. To date, no illnesses or reactions have been reported in Alaska or elsewhere.

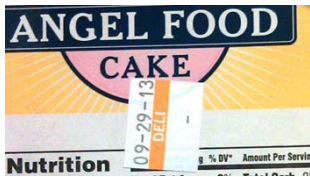
Customers are asked to discard the product or return it to their local store. Customers who have questions about the recall can contact Safeway 24 hours a day, seven days a week at 1-877-SAFEWAY.

For more information on this recall, visit:

<http://www.fda.gov/Safety/Recalls/ucm370125.htm>

For more information on recalls affecting Alaskans, visit DEC's website:

<http://www.dec.alaska.gov/eh/fss/recallsalerts.html>



Sell By Oct 01, 13 **Total Price \$16.99**

ANGEL FOOD CAKE FRUIT TOPPED

NET WT 3.75 LB (1.700 kg)

SUGAR VEGETABLE OIL (PALM, SOYBEAN MONO AND DIGLYCERIDES, POLYSORBATE 60), CORN STARCH, NATURAL AND ARTIFICIAL FLAVOR, SALT, POLYSORBATE 60, GUAR GUM, SUGAR ENRICHED WHEAT FLOUR, BLEACHED (GLUCOSE, NIACIN, REDUCED IRON, THIAMINE, RIBOFLAVIN, FOLIC ACID), WHEAT, MONONITRATE, RIBOFLAVIN, FOLIC ACID, WHEAT EGGS, SOYBEAN OIL, SOYBEAN OIL, PARTIALLY HYDROGENATED VEGETABLE OIL (SOYBEAN OIL), SODA PROCESS W/ YEAST, BAKING POWDER (BAKING SODA, ALUMINUM PHOSPHATE, MONOCALCIUM PHOSPHATE, ALUMINUM SULFATE), PROPYLENE GLYCOL, MONOSTERES FOOD STARCH, MODIFIED RICE, BEAN EXTRACT, MONO & DIGLYCERIDES, SALT, FRUITRIM, FRUIT JUICE, NATURAL, BEAN, DEXTROSE, SODIUM TRICALCIUM PHOSPHATE, ASCORBIC ACID, CITRIC ACID, SUGAR VEGETABLE OIL (PALM, SOYBEAN MONO AND DIGLYCERIDES, POLYSORBATE 60), CORN STARCH, NATURAL AND ARTIFICIAL FLAVOR, SALT, POLYSORBATE 60, GUAR GUM, WATER, CREAM, SALT, ARTIFICIAL COLOR

(MAY CONTAIN THE FOLLOWING: BLUE 1, BLUE 2, RED 3, RED 40, YELLOW 5 OR 6, YELLOW 6 OR 6 LAKE) SODIUM BENZOATE, POTASSIUM SORBATE, CITRIC ACID. **TONE** PRODUCED IN A PLANT THAT MANUFACTURES PRODUCTS CONTAINING PEANUTS, TRICHLORIDE AND SULFITES. *FRUITRIM IS A REGISTERED TRADEMARK OF ADVANCED INGREDIENTS, INC. **CONTAINS WHEAT, EGGS, SOY AND MILK.**



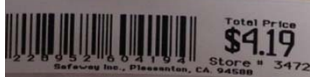
SAFeway

Sell By Oct 01, 13 **Total Price \$4.19**

ANGEL FOOD CAKE LOAF 2 CT

NET WT 10 OZ (283 g)

SUGAR, WHEAT STARCH, ENRICHED WHEAT FLOUR, BLEACHED (GLUCOSE, NIACIN, REDUCED IRON, THIAMINE, RIBOFLAVIN, FOLIC ACID), LAYENING (SODIUM ALUMINUM PHOSPHATE, BAKING SODA, MONOCALCIUM PHOSPHATE, SODIUM ACID PYRPHOSPHATE), DRY EGG WHITES, SALT, DEXTROSE, CORN STARCH, ARTIFICIAL FLAVOR, PROPYLENE GLYCOL, SILICON DIOXIDE, SODIUM SULFATE, WATER. **TONE** PRODUCED IN A PLANT THAT MANUFACTURES PRODUCTS CONTAINING SULFITES. **CONTAINS WHEAT AND EGGS.**





SAFEWAY 

Nutrition Facts		Amount Per Serving	% DV*	Amount Per Serving	% DV**
Srv. Size 1/4 cake (42g) Servings 8		Total Fat 0g	0%	Total Carb. 23g	0%
Calories 100 Fat Cal. 0		Sat. Fat 0g	0%	Fiber 0g	0%
		Trans Fat 0g		Sugars 16g	
		Cholest. 0mg	0%	Protein 2g	
		Sodium 950mg	15%		
*Percent Daily Values (DV) are based on a diet of 2,000 calories a day.		Vitamin A 0% • Vitamin C 0% • Calcium 0% • Iron 0%			

INGREDIENTS: SUGAR, WATER, WHEAT STARCH, ENRICHED BLEACHED WHEAT FLOUR, FLOUR, MALT, REDUCED IRON, THIAMINE MONONITRATE, RIBOFLAVIN, FOLIC ACID, DRY EGG WHITE, LEAVENING (SODIUM ALUMINUM PHOSPHATE, BAKING SODA, MONOCALCIUM PHOSPHATE, SODIUM ACID PYROPHOSPHATE), SALT, DEXTROSE, CORN STARCH, PROPYLENE GLYCOL, ARTIFICIAL FLAVOR.

8010130

 2113010510
 NET WT 12 OZ (340g)

SAFEWAY 

Sell By: Oct.01.13 Total Price
\$ 3.99

ANGEL FOOD CAKE

NET WT. 0lb 12oz (340g)

SUGAR, WHEAT STARCH, ENRICHED WHEAT FLOUR, BLEACHED FLOUR, NIACIN, REDUCED IRON, THIAMINE MONONITRATE, RIBOFLAVIN, FOLIC ACID, LEAVENING (SODIUM ALUMINUM PHOSPHATE, BAKING SODA, MONOCALCIUM PHOSPHATE, SODIUM ACID PYROPHOSPHATE), DRY EGG WHITES, SALT, DEXTROSE, CORN STARCH, ARTIFICIAL FLAVOR, PROPYLENE GLYCOL, SILICON DIOXIDE, SODIUM SULFATE, WATER. ****CONTAINS WHEAT AND EGGS.****


 02283911203996
 Safeway Inc., Pleasanton, CA 94588 Total Price
\$ 3.99
Store # 185



Sell By: Oct.02.13

Total Price

\$ 17.99

ANGEL FOOD CAKE FRUIT TOPPED

NET WT. 3lb 12oz (1701g)

SUGAR, VEGETABLE OIL (PALM, SOYBEAN, MONO AND DIGLYCERIDES, POLYDIBDATE 60), CORN STARCH, NATURAL AND ARTIFICIAL FLAVOR, SALT, POLYSORBATE 80, GUAR GUM, SUGAR ENRICHED WHEAT FLOUR BLEACHED (FLOUR, NIACIN, REDUCED IRON, THIAMINE, MONONITRATE, RIBOFLAVIN, FOLIC ACID), WHOLE EGGS, SOYBEAN OIL, EGG WHITES, PARTIALLY HYDROGENATED VEGETABLE OIL (SOYBEAN OIL), COCOA PROCESSED W/ ALKALINE FAT MILK, LEAVENING (BAKING SODA, SODIUM ALUMINUM PHOSPHATE, MONOCALCIUM PHOSPHATE, ALUMINUM SULFATE), PROPYLENE GLYCOL MONOESTERS, FOOD STARCH, MODIFIED RICE BRAN EXTRACT, MONO & DIGLYCERIDES, SALT, FRUITRIM (FRUIT JUICE, NATURAL BRAN DEXTRIN), SOY LECITHIN, DEXTROSE, PROPYLENE GLYCOL, MONO & DIESTERS OF FATTY ACIDS, CARAMEL COLOR, NATURAL & ARTIFICIAL FLAVOR, SODIUM STEAROYL LACTYLATE, XANTHAN GUM, CELLULOSE GUM, GUAR GUM, CORN STARCH, WATER, SODIUM SULFATE, PROPYLENE GLYCOL, TRICALCIUM PHOSPHATE, ASCORBIC ACID, CITRIC ACID, SUGAR, VEGETABLE OIL (PALM, SOYBEAN, MONO AND DIGLYCERIDES, POLYSORBATE 60), CORN STARCH, NATURAL AND ARTIFICIAL FLAVOR, SALT, POLYSORBATE 80, GUAR GUM, LAYER, CREAM, SALT, ARTIFICIAL COLOR (MAY CONTAIN THE FOLLOWING: BLUE 1, BLUE 2, RED 3, RED 40, YELLOW 5 OR 6, YELLOW 5 OR 6 LAKE), SODIUM BENZOATE, POTASSIUM SORBATE, CITRIC ACID. *WHY? **PRODUCED IN A PLANT THAT MANUFACTURES PRODUCTS CONTAINING PEANUTS, TREE NUTS, AND SULFITES. *FRUITRIM IS A REGISTERED TRADEMARK OF ADVANCED INGREDIENTS, INC. **CONTAINS WHEAT, EGGS, SOY AND MILK.**



10220156 19 179951

Safeway Inc. Pleasanton, CA 94588

Total Price

\$ 17.99

Store # 1953



Sell By Oct 01, 13

Total Price

\$4.19

ANGEL FOOD CAKE LOAF 2 CT



Sell By: Oct.01.13

Total Price
\$ 2.99

ANGEL FOOD CUPS 4 COUNT

NET WT. 01b 3oz (85g)

SUGAR,WHEAT STARCH,ENRICHED WHEAT FLOUR,BLEACHED (FLOUR, NIACIN,REDUCED IRON,THIAMINE MONONITRATE,RIBOFLAVIN,FOLIC ACID),LEAVENING (SODIUM ALUMINUM PHOSPHATE,BAKING SODA, MONOCALCIUM PHOSPHATE,SODIUM ACID PYROPHOSPHATE), DRY EGG WHITES,SALT,HEXTRASSE,CORN STARCH,ARTIFICIAL FLAVOR,PROPYLENE GLYCOL,SILICON DIOXIDE,SODIUM SULFATE,WATER.***CONTAINS WHEAT AND EGGS.**



0228390 1602998

Safeway Inc., Pleasanton, CA 94588

Total Price
\$ 2.99

Store # 1951



Sell By: Oct.01.13

Total Price
\$ 2.49

CAKE ANGEL FOOD LOAF

NET WT. 01b 4oz (113g)

SUGAR,WHEAT STARCH,ENRICHED WHEAT FLOUR,BLEACHED (FLOUR, NIACIN,REDUCED IRON,THIAMINE MONONITRATE,RIBOFLAVIN,FOLIC ACID),LEAVENING (SODIUM ALUMINUM PHOSPHATE,BAKING SODA, MONOCALCIUM PHOSPHATE,SODIUM ACID PYROPHOSPHATE), DRY EGG WHITES,SALT,HEXTRASSE,CORN STARCH,ARTIFICIAL FLAVOR,PROPYLENE GLYCOL,SILICON DIOXIDE,SODIUM SULFATE,WATER.***CONTAINS WHEAT AND EGGS.**



0221281 1102492

Safeway Inc., Pleasanton, CA 94588

Total Price
\$ 2.49

Store # 1953



SAFeway

Sell By: Oct.01.13 Total Price

\$ 4.99

HOLIDAY DECORATED ANGEL FOOD CAKE

NET WT. 1lb 14oz (850g)

SUGAR VEGETABLE OIL (PALM, SOYBEAN, MONO & DIGLYCERIDES, POLYSORBATE 60), CORN STARCH, NATURAL & ARTIFICIAL FLAVOR, SALT, POLYSORBATE 80, GUM, WATER, CREAM, SALT, SUGAR, WHEAT STARCH, ENRICHED WHEAT FLOUR BLEACHED (FLOUR, NIACIN, REDUCED IRON, THIAMIN MONONITRATE, RIBOFLAVIN, FOLIC ACID), LEAVENING (SODIUM ALUMINUM PHOSPHATE, BAKING SODA, MONOCALCIUM PHOSPHATE, SODIUM ACID PYROPHOSPHATE), DRY EGG WHITES, SALT, DEXTROSE, CORN STARCH, ARTIFICIAL FLAVOR, PROPYLENE GLYCOL, SILICON DIOXIDE, SODIUM SULFATE, WATER, SUGAR, WATER, CORN SYRUP, NATURAL & ARTIFICIAL FLAVOR, ACID, CITRIC ACID, POTASSIUM SORBATE, LOCUST BEAN GUM, ARTIFICIAL COLOR (BLUE 1, 2, RED 3, 4, YELLOW 5, 6, YELLOW 5 LAKE), MONO DIGLYCERIDES, SUGAR, CORN STARCH, PARTIALLY HYDROGENATED VEGETABLE OILS (COTTONSEED, SOYBEAN, SEITZ), SOY LECTIN, CONFECTIONERS GLAZE, FDC RED 40, YELLOW 6 LAKE, NATURAL & ARTIFICIAL FLAV., CARNAUBA WAX, FDC YELLOW 5 & BLUE 1 LAKE, RED 3 & RED 40, ARTIFICIAL COLOR (MAY CONTAIN THE FOLLOWING: BLUE 1, BLUE 2, RED 3, RED 40, YELLOW 5 OR 6, YELLOW 5 OR 6 LAKE) SODIUM BENZOATE, POTASSIUM SORBATE, CITRIC ACID. #W101K# PRODUCED IN A PLANT THAT MANUFACTURES PRODUCTS CONTAINING SULFITES. **CONTAINS WHEAT AND EGGS**

SAFeway

0229525 1804997 Total Price

\$ 4.99

Safeway Inc., Pleasanton, CA 94588 Store # 1953

###