



Location of SE-14



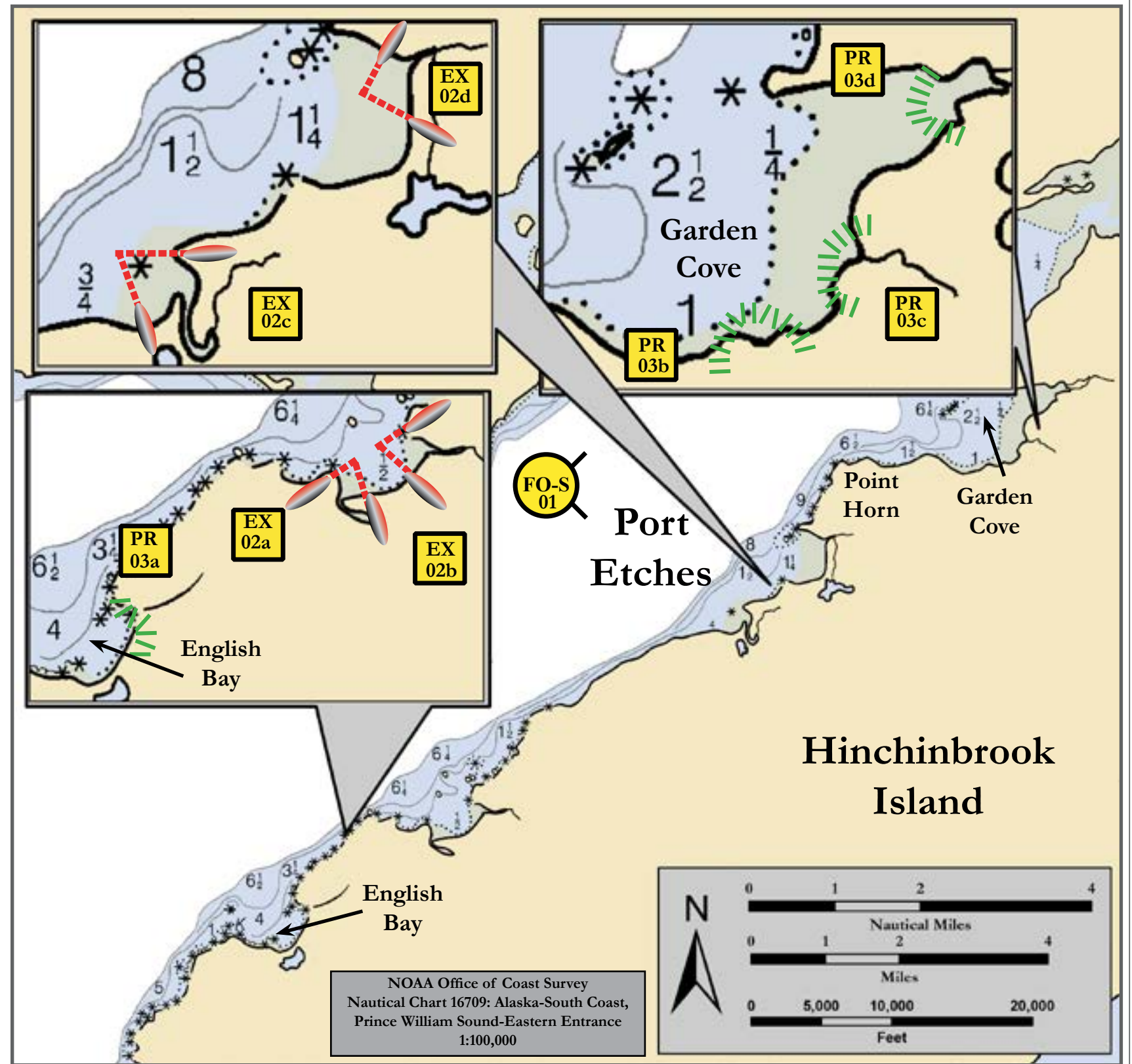
Garden Cove, View Southwest

Map
& Photo
Legend

- | | | | |
|-------------|--|--|-----------------------|
| EX | Exclusion Booming | | Protected-Water Boom |
| PR | Passive Recovery | | Shore-Seal Boom |
| FO-S | Free-Oil Containment and Recovery, Shallow Water | | Snare or Sorbent Boom |

**Geographic Response Strategies for
Prince William Sound Subarea, Southeast Zone**

Port Etches, SE-14



Map is not intended for navigational use.

Lon. 146° 37' 15.1" W
Lat. 60° 18' 56.8" N

Depths in Fathoms

ID	Location and Description	Response Strategy	Implementation	Response Resources	Staging Area	Site Access	Resources Protected (months)	Special Considerations
SE-14-01	Port Etches Nearshore waters in the general area of: Lat. 60° 19.19' N Lon. 146° 35.31' W	Free-oil Recovery Maximize free-oil recovery in the offshore & nearshore environment of Port Etches depending on spill location and trajectory.	Deploy free-oil recovery strike teams upwind and up current of Port Etches. Use aerial surveillance to locate incoming slicks.	Deploy multiple free-oil recovery strike teams as required to maximize interception of oil before it impacts sensitive areas.	Cordova Harbor	Via marine waters Chart 16709-1	Same as SE-14-02	Vessel master should have local knowledge. Use extreme caution, shoal waters with numerous reefs and rocks.
SE-14-02	Port Etches a. Lat. 60° 17.84 N Lon. 146° 38.53 W b. Lat. 60° 18.01 N Lon. 146° 37.94 W c. Lat. 60° 19.11 N Lon. 146° 34.94 W d. Lat. 60° 19.59 N Lon. 146° 38.98 W	Exclusion Exclude oil from impacting the streams on the south shore of Port Etches.	Deploy anchors and boom with skiffs (class 6) at high tide. Each tactic consists of 50 ft. sections of tidal-seal boom on each shore and is completed with 200 ft. sections of protected-water boom. Place in a chevron formation in front of the 4 streams. Tend throughout the tide.	Deployment Equipment 800 ft. protected-water boom 400 ft. tidal-seal boom 4 ea. small anchor systems 16 ea. anchor stakes Vessels 1 ea. class 3/4 1 ea. class 6 Personnel/Shift 5 ea. vessel crew Tending Vessels 1 ea. class 3/4 1 ea. class 6 Personnel/Shift 3 ea. vessel crew	Vessel platform	Via marine waters. Chart 16709-1	Fish- intertidal spawning- salmon (May-Sept.), herring spawning (April-May) Birds- waterfowl concentration, seabird nesting Marine mammals- otters Habitat- marsh, sheltered tidal flats, gravel beach	Vessel master should have local knowledge. Site Surveyed: 09/04/10 PWS GRS SE-01 and SE-02 are in Port Etches and may need to be deployed concurrently. Tested: Attempted deployment on 24 October 2013. High winds and rocky approaches prevented safe vessel access.
SE-14-03	Port Etches – Garden Cove a. Lat. 60° 17.47 N Lon. 146° 39.94 W b. Lat. 60° 19.99 N Lon. 146° 32.92 W c. Lat. 60° 20.49 N Lon. 146° 30.90 W	Passive Recovery Place passive recovery across the channels of the small streams at the head of Port Etches.	On a flooding tide, use skiffs (class 6) and place and anchor 600 ft. of snare line or sorbent boom across each of the three braided streams in Garden Cove. Place the sections of boom at or near the high tide mark to ensure exclusion. Replace as necessary to maximize the recovery.	Deployment Equipment 1800 ft. snare line or sorbent boom 6 ea. small anchor systems 12 ea. anchor stakes Vessels/Personnel/Shift Same as SE-14-02 Tending Vessels/Personnel/Shift Same as SE-14-02	Vessel platform	Via marine waters Chart 16709-1	Same as SE-14-02	Use snare line for persistent oils and sorbent boom for non-persistent oils. Title 41 permitting required from ADNR. Tested: not yet.

****24 October 2013**** SERVS Deployment report notes that under more favorable weather conditions, this site could be deployed without significant revision. However, the exclusion boom sites are significantly shallow with partially submerged rocks throughout.