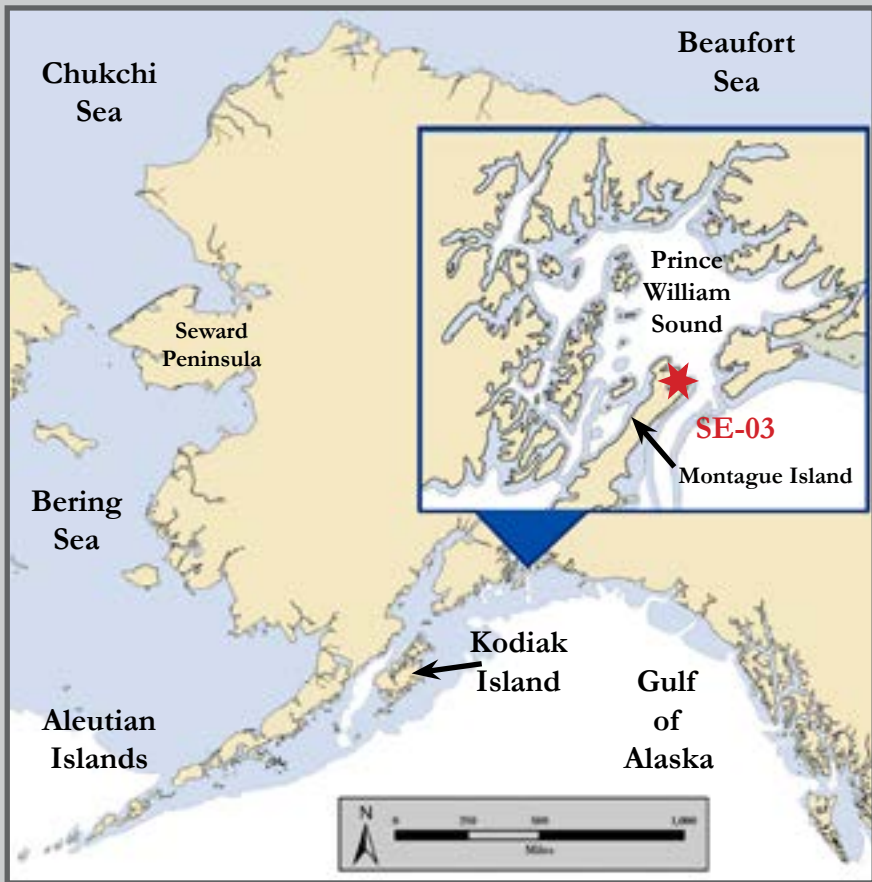


Zaikof Bay, SE-03



Location of SE-03

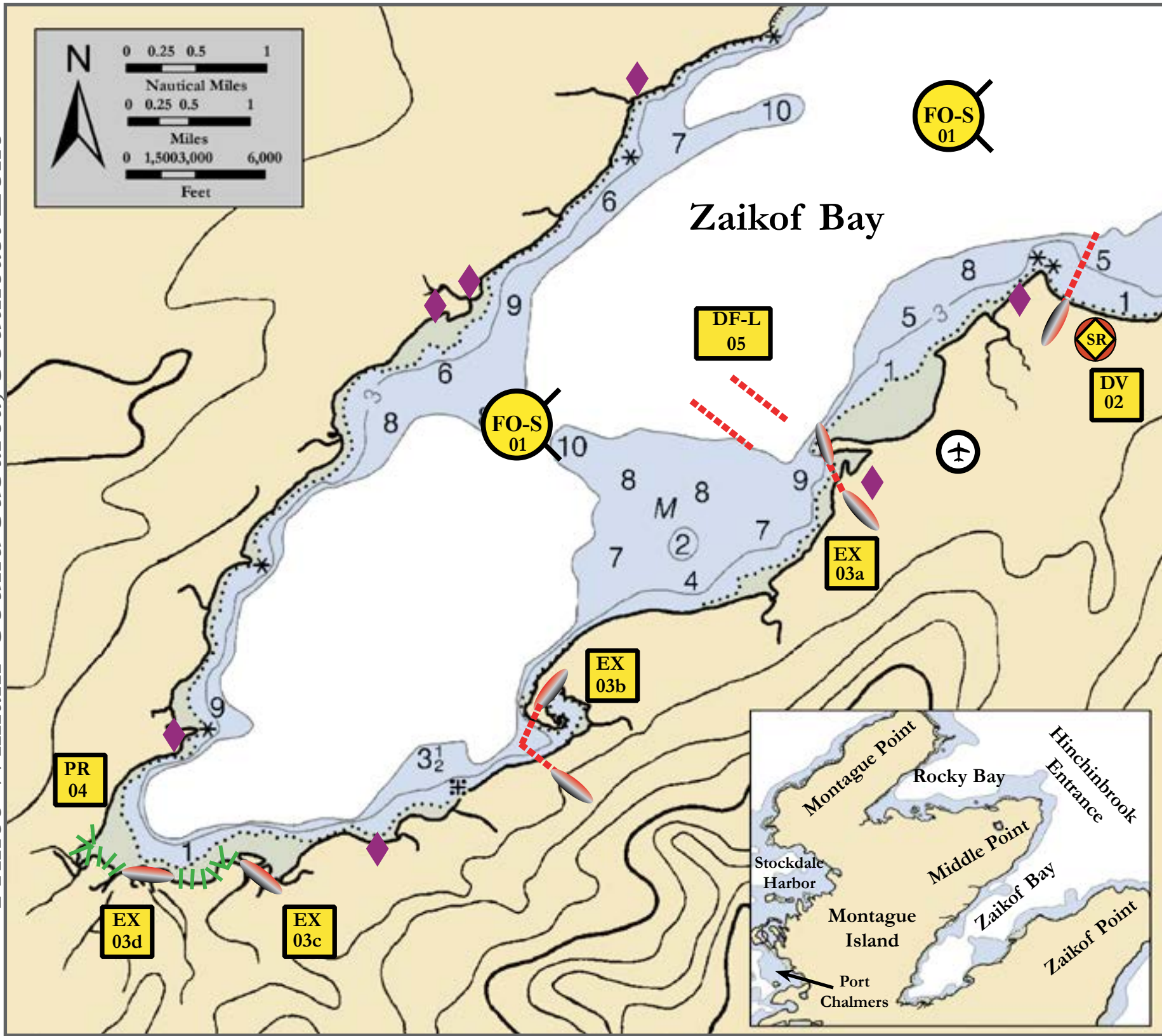
Map & Photo
Legend



Zaikof Bay, View Southwest

EX	Exclusion Boom	FO-S	Free-oil Containment and Recovery, Shallow Water		Snare Line or Sorbent Boom
DV	Diversion Boom	SR	Shoreside Recovery		Eagle Nest
PR	Passive Recovery		Gravel Air Strip		Protected-water Boom
DF-L	Deflection Boom-Live		Tidal-seal Boom		



Geographic Response Strategies for Prince William Sound Subarea, Southeast Zone



Map is not intended for navigational use.

Lat. 60 16' 53.0" N
Lon. 147 4' 9.0" W

Depths in Fathoms

ID	Location and Description	Response Strategy	Implementation	Response Resources	Staging Area	Site Access	Resources Protected (months)	Special Considerations
SE-03-01 	Zaikof Bay Nearshore waters in the general area of: Lat. 60° 18.79' N Lon. 146° 59.74' W	Free-oil Recovery, Shallow Water Maximize free-oil recovery in the offshore & nearshore environment of Zaikof Bay depending on spill source and trajectory.	Deploy free-oil recovery strike teams upwind and up current of Zaikof Bay. Use aerial surveillance to locate incoming slicks.	Deploy multiple free-oil recovery strike teams as required to maximize interception of oil before it impacts sensitive areas.	Marine	Via marine waters Chart 16709-1	Same as SE-03-02	Vessel master should have local knowledge. Gulf of Alaska storms can produce extreme winds in Zaikof Bay. Williwaws are common and anchoring in protected spots is difficult.
SE-03-02 	Southern Shoreline Lat. 60° 17.94 N Lon. 147° 00.16 W	Divert and Collect Divert oil to shoreside collection.	Deploy anchors and boom with vessels (class 3/4/6). Place anchors at apex and ends of boom. If necessary, hold apex outside with vessel. Set-up collection unit and tend throughout the tide.	Deployment Equipment 1000 ft. protected-water boom 100 ft. tidal-seal boom 7 ea. anchor systems (~20 lbs.) 4 ea. anchor systems (~40 lbs.) 1 ea. shoreside collection unit Vessels 2 ea. class 2 (transport) 4 ea. class 3/4 2 ea. class 6 Personnel/Shift 26 ea. vessel crews 3 ea. response techs Tending Vessels 4 ea. class 3/4 1 ea. class 6 Personnel/Shift 14 ea. vessel crews 2 ea. response techs	Vessel platform	Via marine waters. Chart 16709-1 Gravel airstrip (~800 ft. – good only for Super Cubs)	Intertidal spawning -salmon (April–Sept.), herring (April–May) Marine mammals -sea otter Birds -waterfowl concentration, shorebird concentration (April–May), eagle nests Habitat -sheltered tidal flats Human use - high recreation use, commercial fishing	NOAA Charts pre-2002 are inaccurate. FOOSC Historic Properties Specialist should INSPECT site prior to operations. Title 41 permitting required from AKDNR for this site. Surveyed: PWS GRS WG 7/24/02 Tested: 8/13/03 SERVS Deployment

<p>SE-03-03</p> <p>EX</p>	<p>Inlets</p> <p>a. unnamed inlet Lat. 60° 17.20 N Lon. 147° 01.79 W</p> <p>b. unnamed inlet Lat. 60° 16.24 N Lon. 147° 03.80 W</p> <p>c. unnamed stream Lat. 60° 15.8 N Lon. 147° 07.7 W</p> <p>d. unnamed stream Lat. 60° 15.7 N Lon. 147° 06.5 W</p>	<p>Exclusion</p> <p>Exclude oil from entering unnamed inlets and streams on the south side of the bay.</p>	<p>Deploy anchors and boom with vessels (class 3/4/6).</p> <p>Place tidal-seal boom across inter-tidal zone and protected-water boom around each inlet mouth.</p> <p>*(03d 50 ft. tidal-seal) can be deployed with anchor stakes or tied to trees or rocks. (03c 100 ft. tidal-seal) can be deployed with anchor stakes or fixed shore locations with 20 lb. anchor mid-channel.</p> <p>Tend throughout the tide.</p> <p><u>Boom Lengths:</u></p> <p>a. 1500 ft. 250 ft. & 100 ft. tidal-seal b. 1000 ft. 2 x 100 ft. tidal-seal c. 100 ft. tidal-seal d. 50 ft tidal-seal</p>	<p>Deployment Equipment</p> <p>2500 ft. protected-water boom 700 ft. tidal-seal boom 12 ea. anchor systems (~20 lbs.) 10 ea. anchor systems (~40 lbs.) 16 ea. anchor stakes</p> <p>Vessels/Personnel/Shift Same as PWS-SE03-02</p> <p>Tending Vessels/Personnel/Shift Same as PWS-SE03-02</p>	<p>Vessel platform</p>	<p>Marine</p> <p>Chart 16709-1</p>	<p>Same as SE-03-02</p>	<p>Good anchorage at SE-03-04a</p> <p>Surveyed: (03c) and (03d) surveyed 23 October 2013 SERVS deployment.</p> <p>Tested: (03a) and (03b) deployed 23 October 2013 SERVS deployment.</p>
<p>SE-03-04</p> <p>PR</p>	<p>Beaches at Head of Bay</p> <p>Lat. 60° 17.25 N Lon. 147° 02.50 W</p>	<p>Passive Collection and Debris Removal</p> <p>Collect oil impacting beaches at the head of the bay.</p>	<p>Deploy anchors and boom with vessels (class3/4/6).</p> <p>Place snare line or sorbent boom, depending on oil, on tidal flats. Tend daily.</p>	<p>Deployment Equipment</p> <p>2000 ft. snare line or sorbent boom 40 ea. anchor stakes</p> <p>Vessels/Personnel/Shift Same as SE-03-02</p> <p>Tending Same as SE-03-02</p>	<p>Vessel platform</p>	<p>Marine</p> <p>Chart 16709-1</p>	<p>Same as SE-03-02</p>	<p>Use snare boom for persistent oil and sorbent boom for non-persistent oil.</p> <p>Surveyed: PWS GRS WG 7/24/02</p>
<p>SE-03-05</p> <p>DF-L</p>	<p>Zaikof Bay</p> <p>Lat. 60° 17.25 N Lon. 147° 02.50 W</p>	<p>Deflection-Live</p> <p>Deflect oil away from the shoreline in Zaikof Bay using live deflection.</p>	<p>Transport equipment by vessel (class 2).</p> <p>Deploy anchors and boom with vessels (class 3/4/6).</p> <p>Place boom at the proper angle to deflect oil away from the southern shoreline in Zaikof Bay.</p> <p>Tend throughout the tide.</p> <p><u>Boom Lengths:</u></p> <p>2 ea. 660 ft.</p>	<p>Deployment Equipment</p> <p>1320 ft. open-water boom</p> <p>Vessels/Personnel/Shift Same as PWS-SE03-02</p> <p>Tending Same as PWS-SE03-02</p>	<p>Vessel platform</p>	<p>Marine</p> <p>Chart 16709-1</p>	<p>Same as SE-03-02</p>	<p>Surveyed: PWS GRS WG 7/24/02</p> <p>Tested: No</p> <p>*Live deflection tactics are resource intensive and fixed deflection may be an appropriate option when vessel and personnel resources are limited.</p>