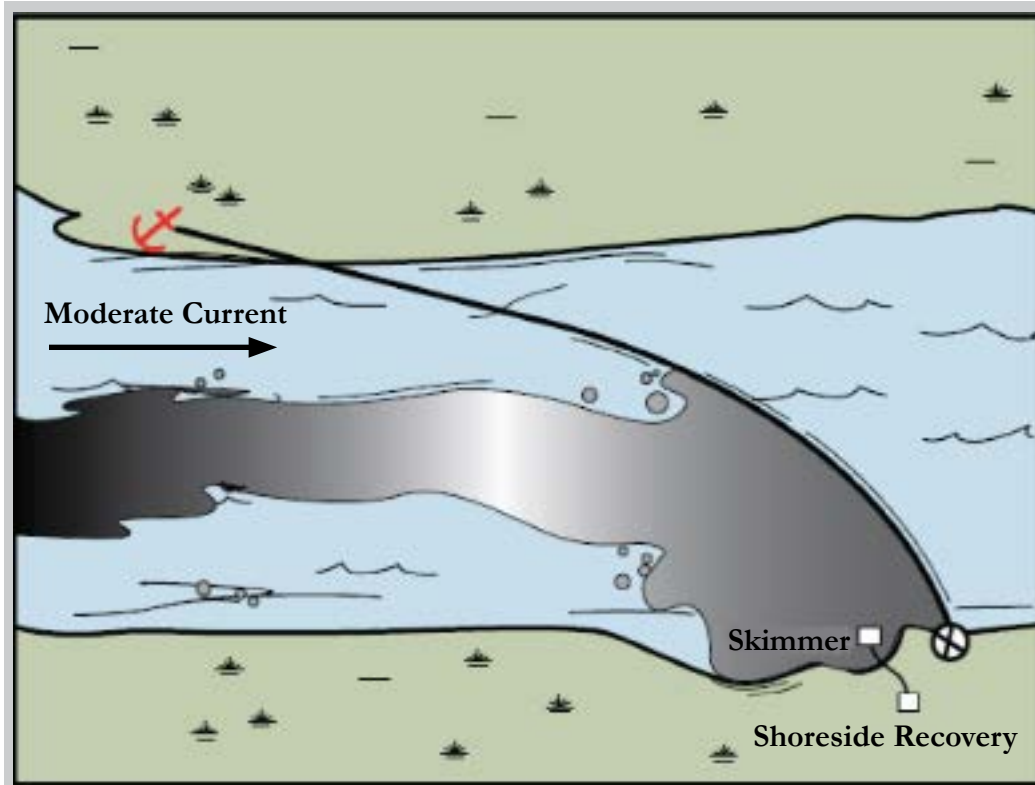


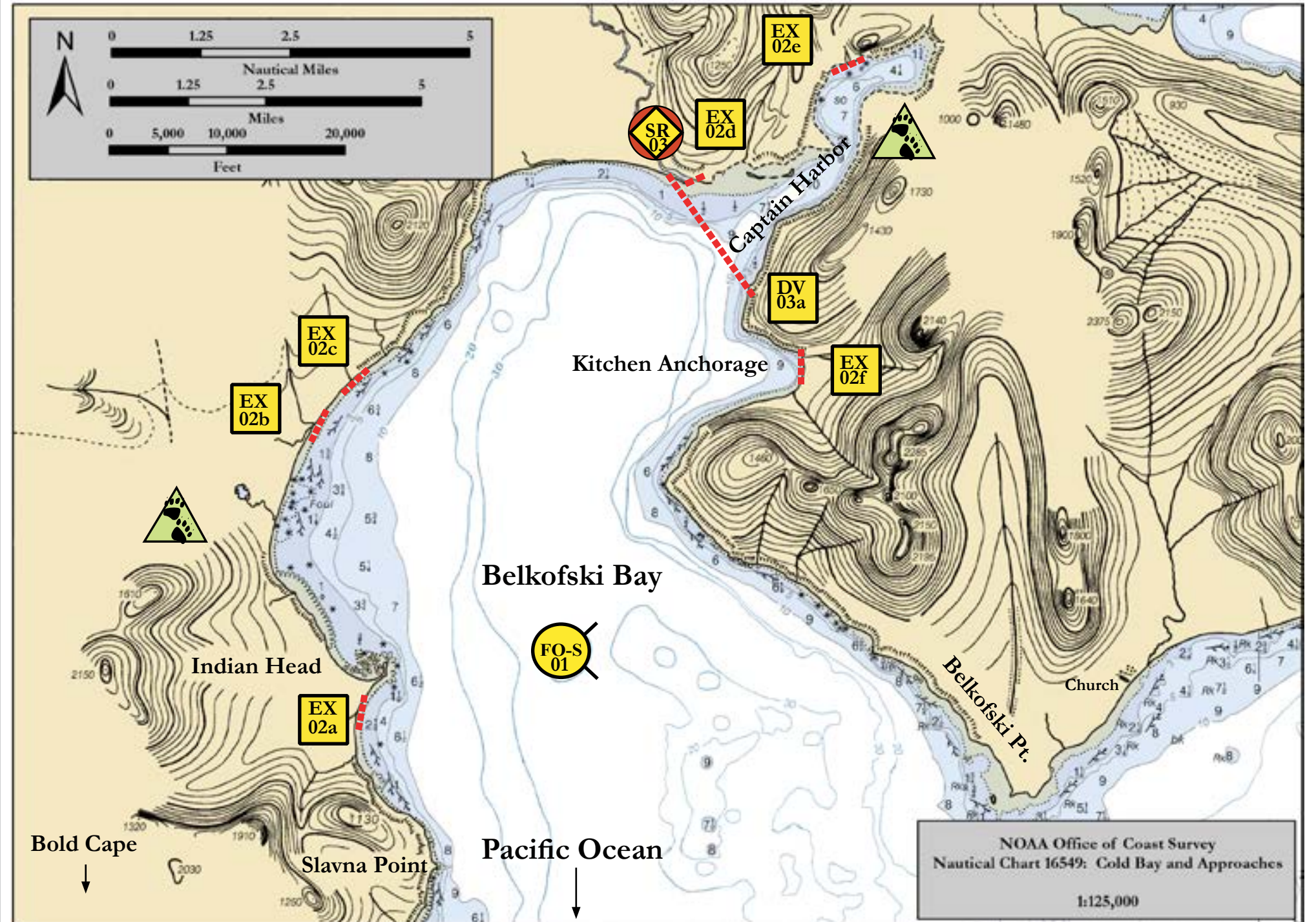
Belkofski Bay, AEA-10



Single Boom Diversion Configuration

Map & Legend

	Exclusion Booming
	Diversion Booming
	Free-oil Containment and Recovery, Shallow Water
	Bears in Area, Guards Recommended
	Protected-water Boom



Map is not intended for navigational use.

Latitude 55° 6' 5.8" N
Longitude 162° 9' 14.6" W

Depths in Meters

Geographic Response Strategies for Aleutian Islands Subarea

ID	Location and Description	Response Strategy	Implementation	Response Resources	Staging Area	Site Access	Resources Protected (months)	Special Considerations
AEA-10-01	Belkofski Bay Nearshore waters in the general area of: Lat. 55° 07.46' N Lon. 162° 10.17' W	Free-oil Recovery Maximize free-oil recovery in the offshore & nearshore environment of Belkofski Bay depending on spill location and trajectory.	Deploy free-oil recovery strike teams upwind and up current of Belkofski Bay. Use aerial surveillance to locate incoming slicks.	Deploy multiple free-oil recovery strike teams as required to maximize interception of oil before it impacts sensitive areas.	Vessel platform.	Via marine waters Chart 16549-1	Same as AEA-10-02	Vessel master should have local knowledge. Use extreme caution, shoal waters with numerous reefs and rocks.
AEA-10-02	Belkofski Bay Stream Locations a. Lat. 55° 04.93' N Lon. 162° 12.56' W b. Lat. 55° 07.21' N Lon. 162° 13.14' W c. Lat. 55° 07.68' N Lon. 162° 12.54' W d. Lat. 55° 9' 12.5" N Lon. 162° 7' 54.6" W e. Lat. 55° 10.17' N Lon. 162° 05.68' W f. Lat. 55° 07.82' N Lon. 162° 06.37' W This area has extensive tidal flats that are exposed at low tide. Vessel stranding is possible.	Exclusion Exclude oil from impacting the identified streams and intertidal areas in Belkofski Bay.	Deploy anchors and boom with skiffs at high tide. Except for (d), all stream mouths are approximately 25-60 ft. wide. Use 75 ft. sections for each stream to ensure adequate exclusion. For (d) place 600 ft. of protected-water boom at an angle at the mouth of the stream. Tend throughout the tide.	Deployment Equipment 1200 ft. protected-water boom 10 ea. Small anchor systems 32 ea. Anchor stakes Vessels 2 ea. Class 6 Personnel/Shift 4 ea. Vessel crew/general techs Tending Vessels 1 ea. Class 6 Personnel/Shift 2 ea. Vessel crew	Vessel platform.	Via marine waters Chart 16549-1	Fish-intertidal spawning-salmon (May-Sept.) Birds-waterfowl concentration-threatened waterfowl present, seabird nesting, shorebird concentrations Human use-commercial fishing, subsistence Habitat-marsh, exposed rocky shoreline, gravel beach, eel grass Brown bear, large chum/pink runs for commercial fisheries.	Site surveyed 05/12/16 A large population of bears forage on the tidal flats in the spring and area present during salmon runs. A bear guard is required. FOSC Historic Properties Specialist should INSPECT this site prior to deployment. THREATENED OR ENDANGERED SPECIES/HABITAT POSSIBLE/PRESENT. Discuss with DOI prior to on-site operations. Title 16 permitting required from ADF&G. Tested: No
AEA-10-03	Belkofski Bay Entrance to Captain Harbor a. Upstream Lat. 55 08' 53.82" N Lon. 162 06' 44.74" W Downstream Lat. 55° 09' 10.18" N Lon. 162° 06' 43.32" W	Diversion/Recovery Divert oil to designated recovery site on north shore of Captain Harbor.	Deploy 1800 ft. of protected-water boom to block the entrance to Captain Harbor.	Deployment Equipment 1800 ft. protected-water boom 12 ea. Pogo anchor systems 1 ea. Shoreside recovery unit Vessels, Personnel, Tending Same as AEA-10-02	Vessel platform	Via marine waters Chart 16549-1	Same as AEA-10-02	Vessel master should have local knowledge. Use extreme caution, shoal waters with numerous reefs and rocks.