

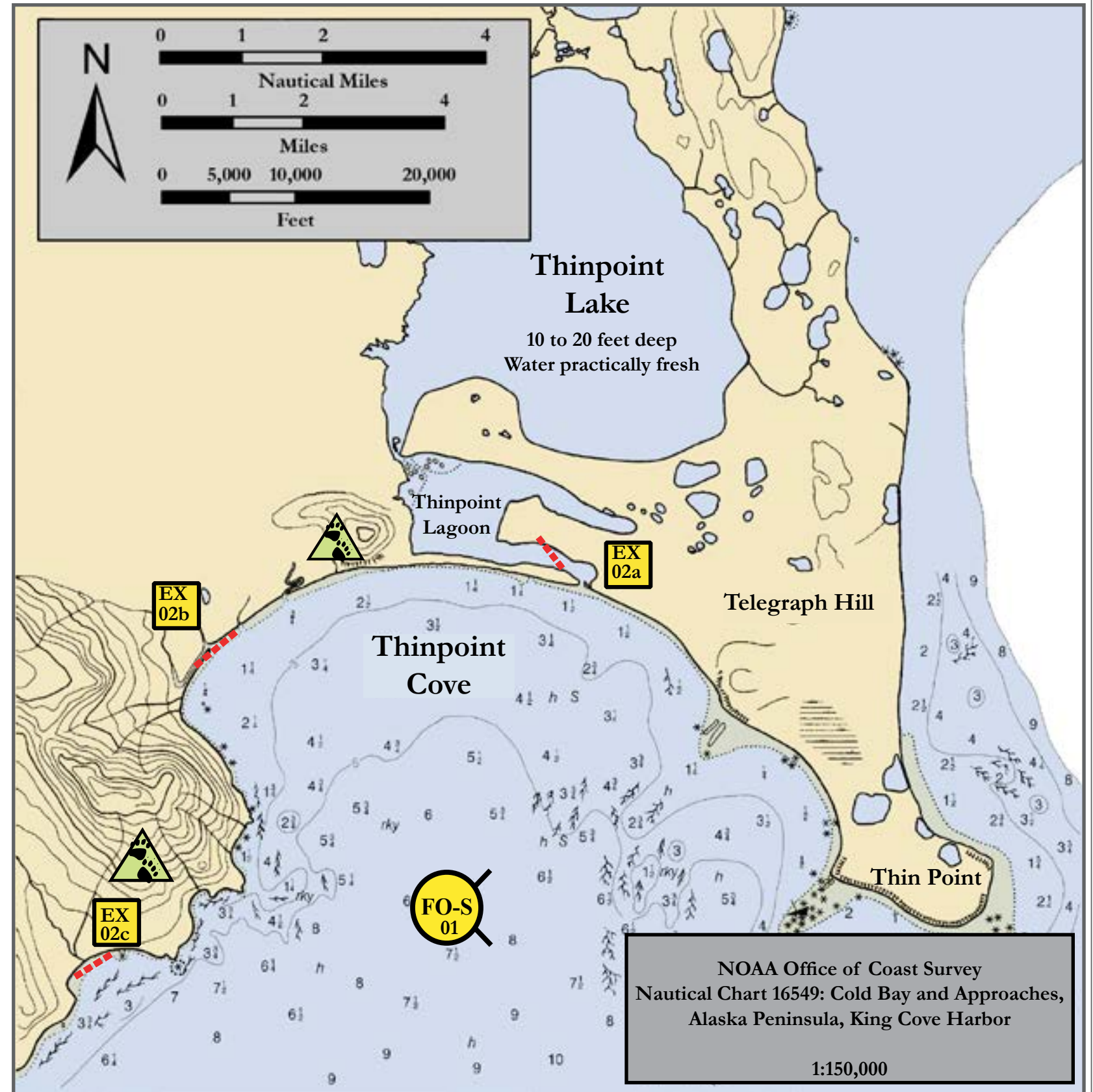
Location of AEA-13

	Exclusion Booming
	Free-oil Containment and Recovery, Shallow Water
	Bears in Area, Guards Recommended
	Protected-water Boom

Map  
&  
Legend

**Geographic Response Strategies for  
Aleutian Islands East A Zone**



# Thinpoint Cove, AEA-13



Map is not intended for navigational use.

Lat. 54° 59' 35.4" N  
Lon. 162° 39' 59.2" W

Depths in Meters

ID	Location and Description	Response Strategy	Implementation	Response Resources	Staging Area	Site Access	Resources Protected (months)	Special Considerations
AEA-13-01 	<b>Thinpoint Lagoon</b>  Nearshore waters in the general area of:  Lat. 54° 59.06' N Lon. 162° 39.95' W	<b>Free-oil Recovery</b>  Maximize free-oil recovery in the offshore & nearshore environment of Thinpoint Lagoon depending on spill location and trajectory.	Deploy free-oil recovery strike teams upwind and up current of Thinpoint Lagoon.  Use aerial surveillance to locate incoming slicks.	Deploy multiple free-oil recovery strike teams as required to maximize interception of oil before it impacts sensitive areas.	Vessel Platform	Via marine waters  Chart 16535-1	Same as AEA-13-02	Vessel master should have local knowledge.
AEA-13-02 	<b>Thinpoint Lagoon</b>  Stream Locations  a. Lat. 54° 59.97' N Lon. 162° 38.91' W (Stream outlet configuration changes yearly)  b. Lat. 54° 59.31' N Lon. 162° 42.81' W  c. Lat. 54° 57.10' N Lon. 162° 44.30' W	<b>Exclusion</b>  Exclude oil from impacting the identified streams and intertidal areas in Thinpoint Lagoon.	Deploy anchors and boom with skiffs at high tide.  Place protected water boom at an angle across the mouth of the stream at the high tide mark.  Tend throughout the tide.  <u>Boom Lengths:</u>  a. 150 ft.  b. 100 ft.  c. 100 ft.	<b>Deployment Equipment</b>  350 ft. protected-water boom 3 ea. small anchor systems 24 ea. anchor stakes  <b>Vessels</b> 1 ea. Class 6  <b>Personnel/Shift</b> 2 ea. Vessel crew/general techs  <b>Tending Vessels</b> 1 ea. Class 6  <b>Personnel/Shift</b> 2 ea. Vessel crew	Vessel Platform	Via marine waters  Chart 16535-1  Accessible by unmaintained dirt road.	<b>Fish</b> -intertidal spawning salmon (May-Sept.), halibut in Cold Bay year-round.  <b>Birds</b> -waterfowl concentration, seabird nesting  <b>Human use</b> -commercial fishing, sport fishing  <b>Habitat</b> -marsh, exposed rocky shoreline, gravel beach, eel grass	Site surveyed: 05/12/16  A large population of bears forage on the tidal flats in the spring and are present during salmon runs. A bear guard is required.  FOSC Historic Properties Specialist should INSPECT this site prior to deployment.  Title 16 permitting required from ADF&G.  Tested: No  Nearshore waters are extremely shallow 1' deep 80 yards from shore at mean tide.