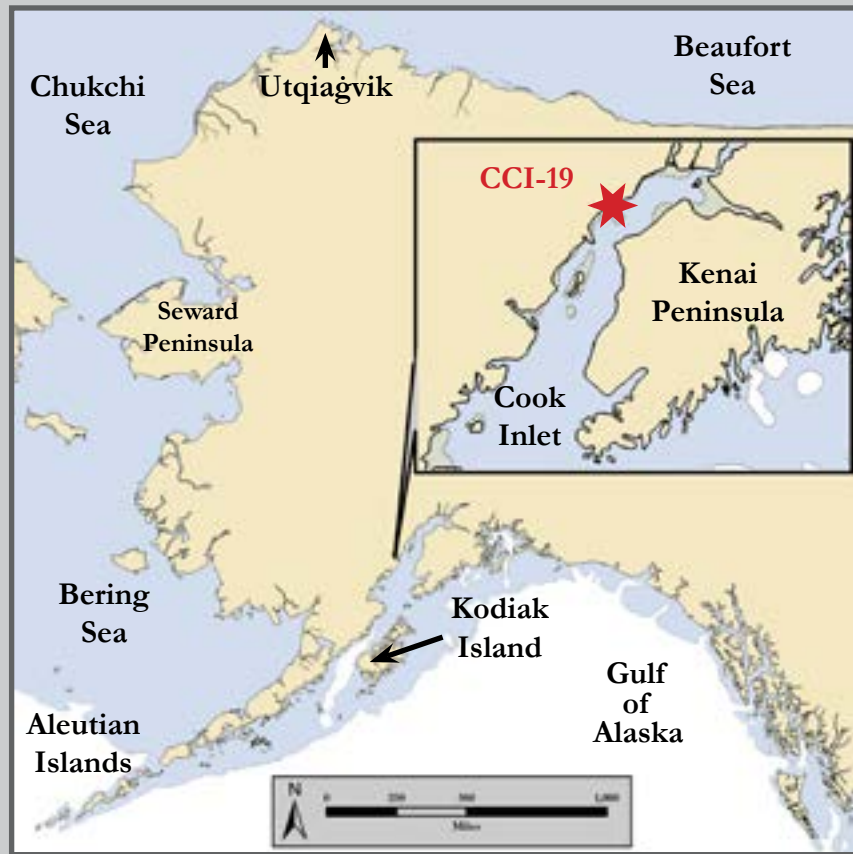


Chuitna River, CCI-19



Location of CCI-19

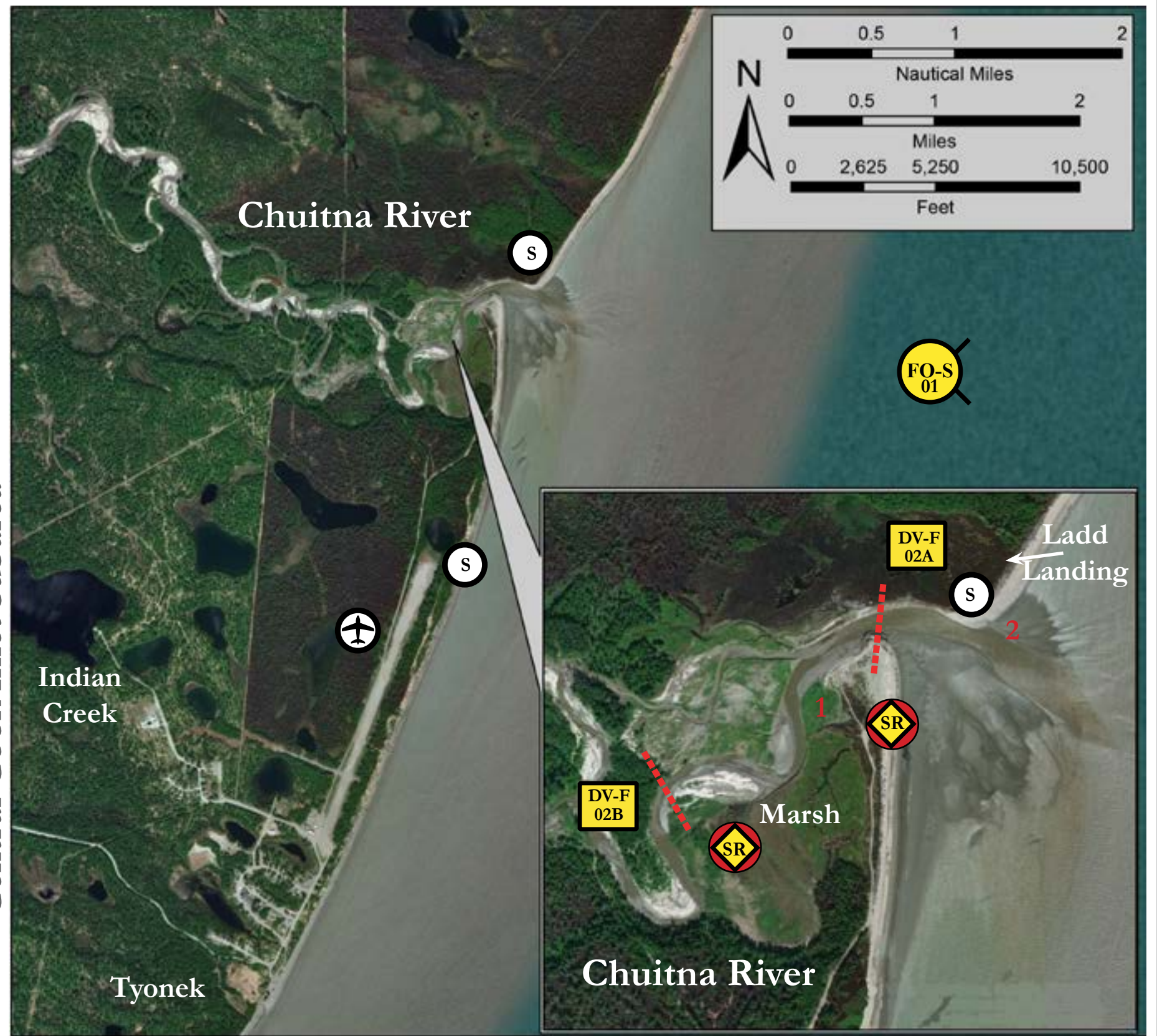
Map
& Photo
Legend



Chuitna River, View Northwest

	Airport		
	Staging Area		
	Diversion Booming Fast Water		Protected-water Boom
	Free-oil Skimming and Recovery, Shallow Water		Shoreside Recovery



Geographic Response Strategies for Central Cook Inlet Subarea



Map is not intended for navigational use.

Lat. 61° 5' 46.5" N
Lon. 151° 7' 18.0" W

Depths in Fathoms

ID	Location and Description	Response Strategy	Implementation	Response Resources	Staging Area	Site Access	Resources Protected (months)	Special Considerations
CCI-19-01 	Chuitna River Nearshore waters in the general area of: Lat. 61° 5' 46.5" N Lon. 151° 7' 18.0" W	Free-oil Recovery Maximize free-oil recovery in the offshore & nearshore environment outside the mudflats.	Deploy free-oil recovery strike teams upwind and up current of the river entrance. Use aerial surveillance to locate incoming slicks.	Deploy multiple nearshore free-oil recovery strike teams as required to maximize interception of oil before it impacts sensitive areas.	Tyonek dock or offshore support vessel. Ladd Landing during summer.	Via marine waters See NOAA Charts 16663-1.	Same as CCI-19-02	Emphasis on offshore and nearshore efforts to keep product off of tidal flat areas since it would be virtually impossible to protect exposed tidal flats and habitat outside of the river entrance. Shoal waters and rocks. Vessel masters must have local knowledge.
CCI-19-02 	Chuitna River 3 mi. north of North-Forelands and 1.8 mi. north of Tyonek on the west side of Cook Inlet. River is marked by a low break in the bluff. Features include marsh habitat near the river entrance, mixed sand and gravel beaches and mudflats that extend outward to the inlet up to half a mi. at low water. 02 A- Lat. 60° 55.53 N Lon. 152° 44.86 W 02 B- Lat. 60° 56.08 N Lon. 152° 44.53 W River Channel - Average Depth of 8-10 ft. at high water. - Not navigable at low tide. - Moderate currents. - Narrow and winding - Tidally influenced to about 1 mi. upriver -River width at designated collection sites-approximately 100 ft.	Diversion Divert spilled product to designated collection sites. Recover spilled product at designated collection sites. Recovery spilled product at designated collection sites. Trained crews should haze birds out of river mouth and adjacent marsh areas, once a hazing permit is issued. Seasonal Restriction River iced-in/not navigable from approximately November to April. However, road between Tyonek and Beluga, including ice bridge, is maintained through winter.	02A- Place 200 ft. of diversion boom to divert spilled product to south shore collection site. 02B- Place another 200 ft. of diversion boom in a cascade configuration to divert spilled product to south shore collection site further upstream. Collect spilled product with either a shoreside collection unit. Note: Recovery preferred from south shore. Storage & disposal preferred from north shore.	Deployment Equipment 2 ea. 200 ft. river boom units 2 ea. protected water skimmer 600 ft. 2" discharge hose 2 ea. on-shore storage units 6 ea. 40 lb. anchor systems 1 ea. additional transfer pump 1 ea. wildlife hazing kit 800 ft. line Support 2 ea. Class #4/5/6 vessel 1 ea. truck 1 ea. truck with trailer 1 ea. vacuum truck 1 ea. shelter. 2 ea. ATV trailers 2 ea. ATVs 10 ea. fence posts 1 or 2 light plants Personnel/Shift 10 ea. deploy & set-up 8 ea. tend & maintain	-Ladd Landing-summer during, marine access. -Beluga airstrip with year round road access from Beluga to site. Services-(heavy industrial area)-Chugach Electric, Beluga Village, Veco, gas industry infrastructure, and Tyonek Village -Security-none/minimal -Support-shelter South shore: -Tyonek airstrip with year round road access from Tyonek to site. -Services-same as above -Security-none/minimal -Support-shelter	Mobilization options include airlift to either Beluga or Tyonek, or marine transport which is restricted from November - April. Marine access with shallow draft vessels (May - September). Road access year round from Beluga or Tyonek via ATV or off road equipment. Barge landing at (Ladd Landing) located north side of river mouth. Seasonal Restriction River iced-in/not navigable from approximately November - April.	Tidal marshes (all year) Salmon migration and spawning (May-October) Intertidal salmon spawning (July-September) Waterfowl and shorebird concentrations (all year) Subsistence Fishing (July-September)	The FOSC Historic Properties Specialist should INSPECT site prior to operations. Inspection should be performed as the circumstances of the emergency allow. High concentration of brown bears in summer months. Very difficult and unsafe to protect exposed tidal flats outside river mouth. Working on banks of the river should be no problem. Take care not to work or walk on oiled shoreline, to avoid driving oil into the soils. Access above intertidal area will have to be resolved with landowners before setting anchors or staging areas. Potential pipe hazard east side of river entrance that can be covered by about 2 ft. at mean higher high water (reported 1996).

1- Shore-side recovery operations preferred on south shore

2- Storage and disposal preferred on north shore