









Location of NCI-10

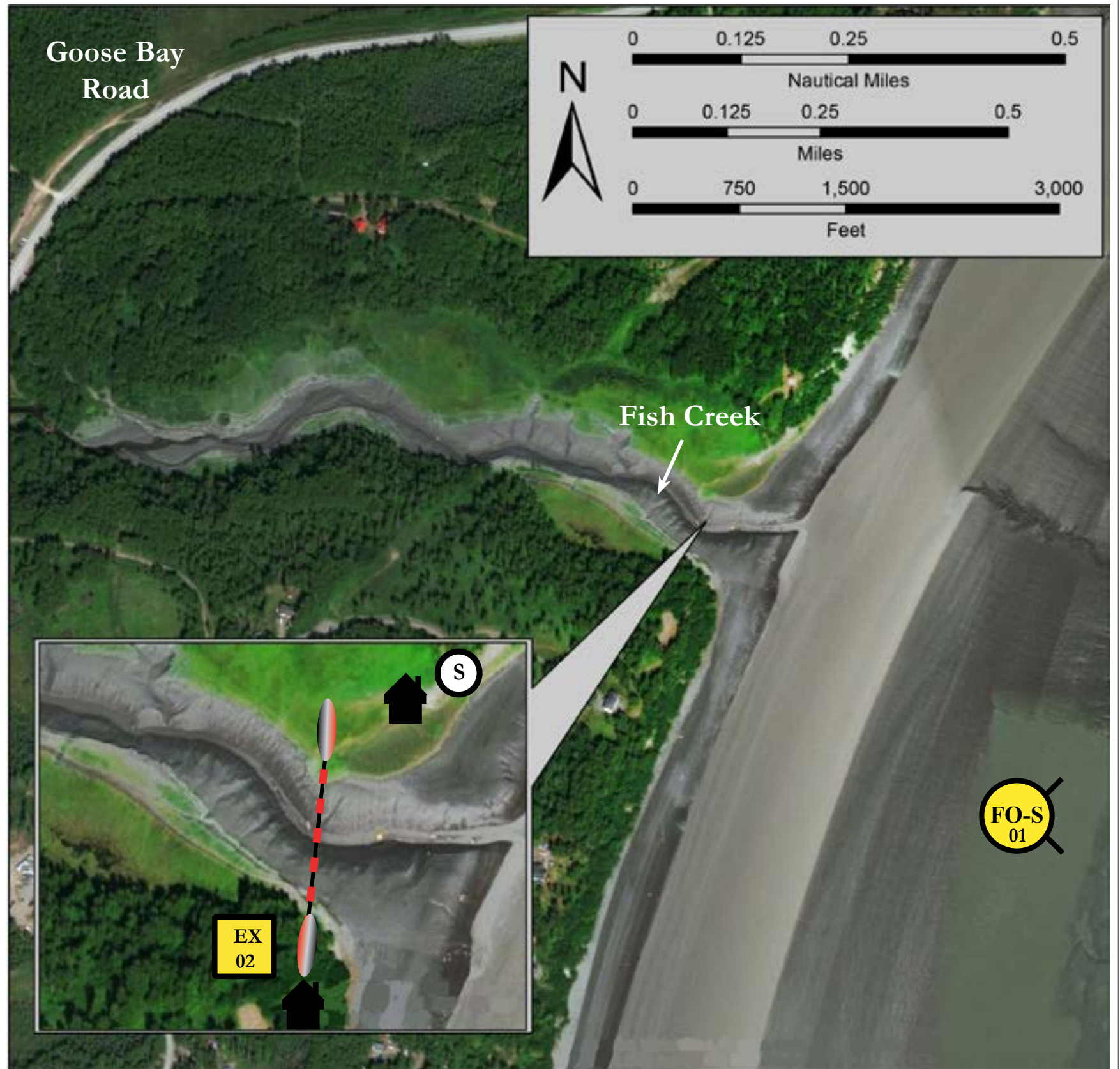
Map  
& Photo  
Legend



Fish Creek, View West

-  Shore-seal Boom
-  Calm-water Boom
-  Staging Area
-  Exclusion Booming
-  Free-oil Skimming and Recovery, Shallow Water
-  Cabin

# Fish Creek-Mat-Su, NCI-10





Map is not intended for navigational use.

Lat. 61° 26' 13.5" N  
Lon. 149° 46' 16.5" W

Depths in Fathoms

## Geographic Response Strategies for Northern Cook Inlet Subarea

ID	Location and Description	Response Strategy	Implementation	Response Resources	Staging Area	Site Access	Resources Protected (months)	Special Considerations
NCI-10-01 	<b>Fish Creek-mat-Su</b>  Nearshore waters in the general area of:  Lat. 61° 26.0' N Lon. 149° 45.5' W	<b>Free-oil Recovery</b>  Maximize free-oil recovery in the offshore & nearshore environment of Fish Creek depending on spill location and trajectory.	Deploy free-oil recovery strike teams upwind and up current of Fish Creek.  Use aerial surveillance to locate incoming slicks.	Deploy multiple free-oil recovery strike teams as required to maximize interception of oil before it impacts sensitive areas.	Anchorage	Via marine waters  Chart 16660-1	Same as NCI-10-02	Vessel master should have local knowledge.
NCI-10-02 	<b>Fish Creek-Mat-Su</b>  Lat. 61° 26.30' N Lon. 149° 46.13' W	<b>Exclusion</b>  Exclude oil from impacting the marsh and stream at Fish Creek.	Transport equipment by vehicle from Anchorage.  Use ATV trail to the site.  Deploy boom by inflatable boat on the flood tide.  Place tidal-seal boom across intertidal zone and calm-water boom to complete the exclusion. Position booms in the cuts in the bank.  Due to extremely steep creek banks the boom will need slack to conform to channel at low tide. Tend boom during flood tide.	<b>Deployment Equipment</b> 150 ft. calm-water boom 2 ea. ≥60 ft. tidal-seal boom 2 ea. anchor systems (~20 lbs.) 4 ea. anchor stakes 1 ea. ATV with trailer <b>Vessels</b> 1 ea. inflatable boat <b>Personnel/Shift</b> 3 ea. response techs <b>Tending Vessels</b> 1 ea. inflatable boat <b>Personnel/Shift</b> 2 ea. response techs	Anchorage	Via Goose Bay Rd. Turn left on road immediately prior to Fish Creek Bridge.  Owner permission needed for site access.  ATV trail leads to the site.	<b>Fish-</b> salmon, dolly varden  <b>Birds-</b> shorebird (Apr.-May), waterfowl concentrations  <b>Habitat-</b> marsh  <b>Human use-</b> high recreational use (May-Nov.), sport fishing (May-Dec).	The creek bank is extremely steep.  Title 41 permit required from ADNOR.  FOSC Historic Properties Specialist should INSPECT site prior to operations. Inspection should be performed as the circumstances of the emergency allow.  This site is not accessible via marine waters.  Mud on stream bank will tolerate light traffic.  Surrounding lands are privately owned. Address of properties are: 13201 S. Daves Rd. 13008 S. Daves Rd.  Mat-Su Borough will provide contact information at (907) 745-9802.  Site surveyed: 7/08/03 GRS Tactics Committee.  Tested: not yet.