

Goose Bay/Creek, NCI-09







Location of NCI-09

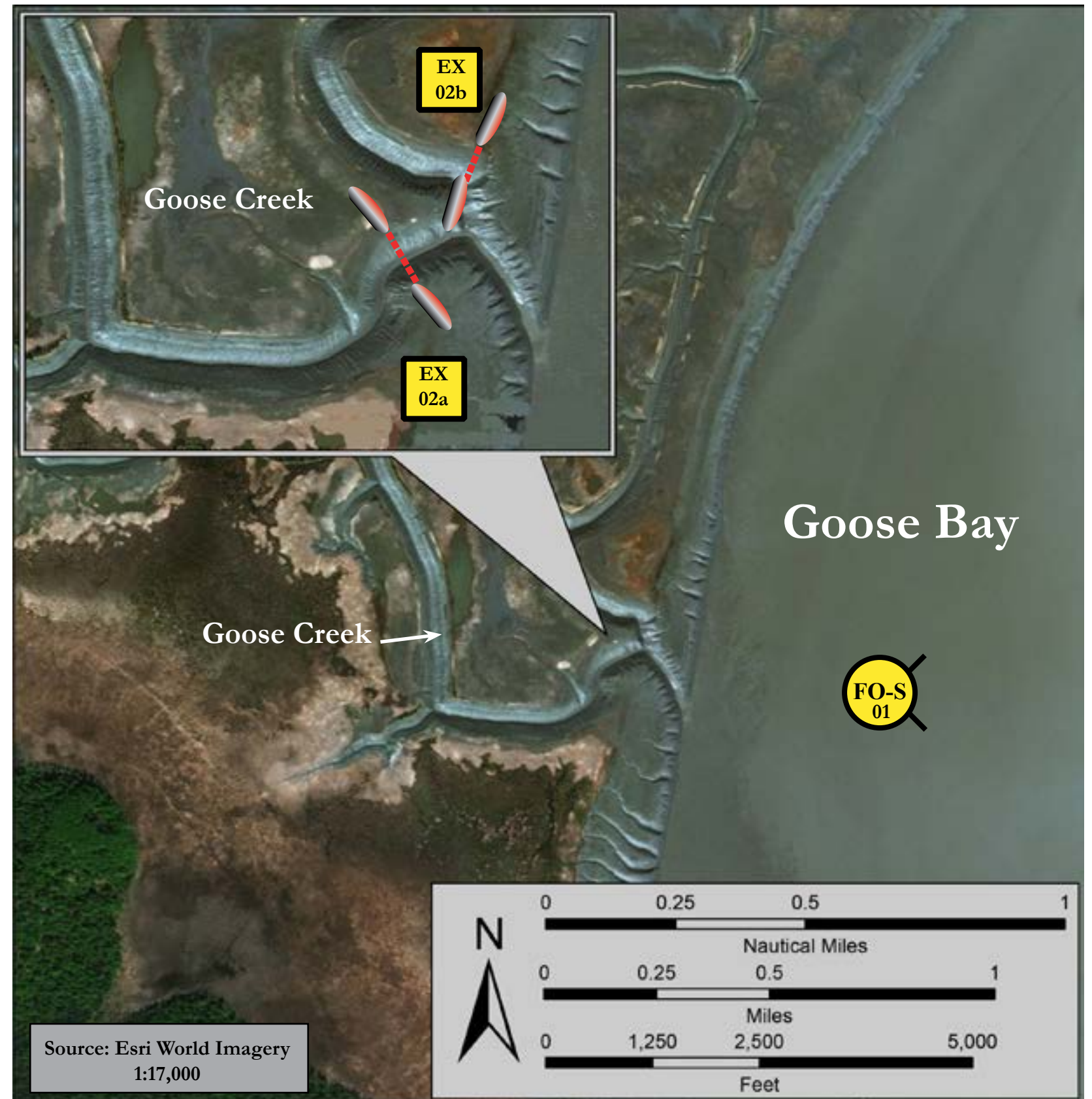
Map
& Photo
Legend



Goose Bay, View West

	Shore-seal Boom		Protected-water Boom
	Exclusion Boom		
	Free-oil Skimming and Recovery, Shallow Water		



Geographic Response Strategies for Northern Cook Inlet Subarea



Map is not intended for navigational use.

Lat. 61° 22' 31.4" N
Lon. 149° 53' 15.2" W

Depths in Fathoms

ID	Location and Description	Response Strategy	Implementation	Response Resources	Staging Area	Site Access	Resources Protected (months)	Special Considerations
NCI-09-01 	Goose Bay Nearshore waters in the general area of: Lat. 61° 22.3' N Lon. 149° 53.4' W	Free-oil Recovery Maximize free-oil recovery in the offshore & nearshore environment of Goose Bay depending on spill location and trajectory.	Deploy free-oil recovery strike teams upwind and up current of Goose Bay. Use aerial surveillance to locate incoming slicks.	Deploy multiple free-oil recovery strike teams as required to maximize interception of oil before it impacts sensitive areas.	Anchorage	Via marine waters Chart 16660-1	Same as NCI-09-02	Vessel master should have local knowledge.
NCI-09-02 	Goose Bay a. Lat. 61° 22.46' N Lon. 149° 53.45' W	Exclusion Exclude oil from impacting the marsh and stream at Goose Bay.	Transport equipment by vessel (class 3/4) from Anchorage. Deploy anchors and boom with skiffs (class 6). Place tidal-seal boom on the across intertidal zone and complete the exclusion with protected-water boom Tend throughout the flood tide. Boom Lengths: a. 320 ft. b. 320 ft.	Deployment Equipment 400 ft. protected-water boom 4 section ≥60 ft. tidal-seal boom 4 ea. anchor systems (~20 lbs.) 8 ea. anchor stakes 40 ft. plywood or Astroturf Vessels 1 ea. class 3/4 1 ea. class 6 Personnel/Shift 4 ea. vessel crew Tending Vessels 1 ea. class 3/4 1 ea. class 6 Personnel/Shift 4 ea. vessel crew	Vessel platform	Via marine waters or Chart 16660-1	Fish- salmon Birds- shorebird nesting, waterfowl nesting/concentrations Habitat- marsh Human use- high recreational use (May-Nov.), sport fishing (May-Dec), waterfowl hunting	Vessel master should have local knowledge. Surrounding lands are an Alaska State Game Refuge. Title 16 permit required from ADF&G. Title 41 permit required from ADNR REPORT any cultural resources found during operations to the FOSC Historic Properties Specialist. Reporting should be performed as the circumstances of the emergency allow. Steep and soft mud banks present significant hazards to responders. Deploy at high tide and use Astroturf or plywood to cross mud banks. Site surveyed: 7/08/03 GRS Tactics Committee Tested: not yet