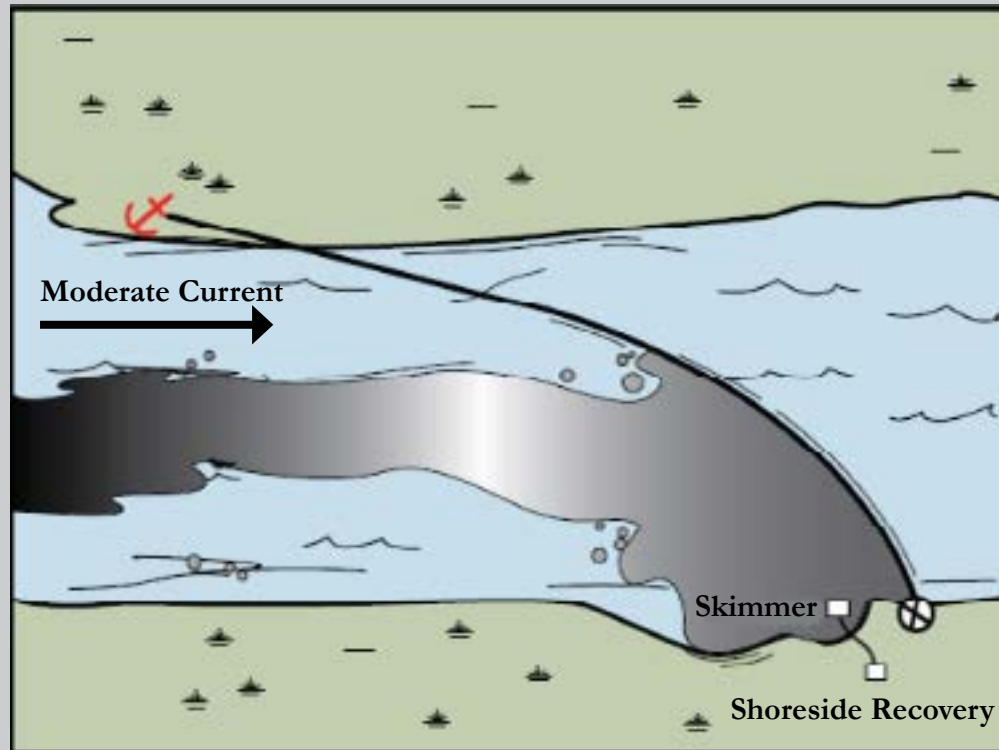






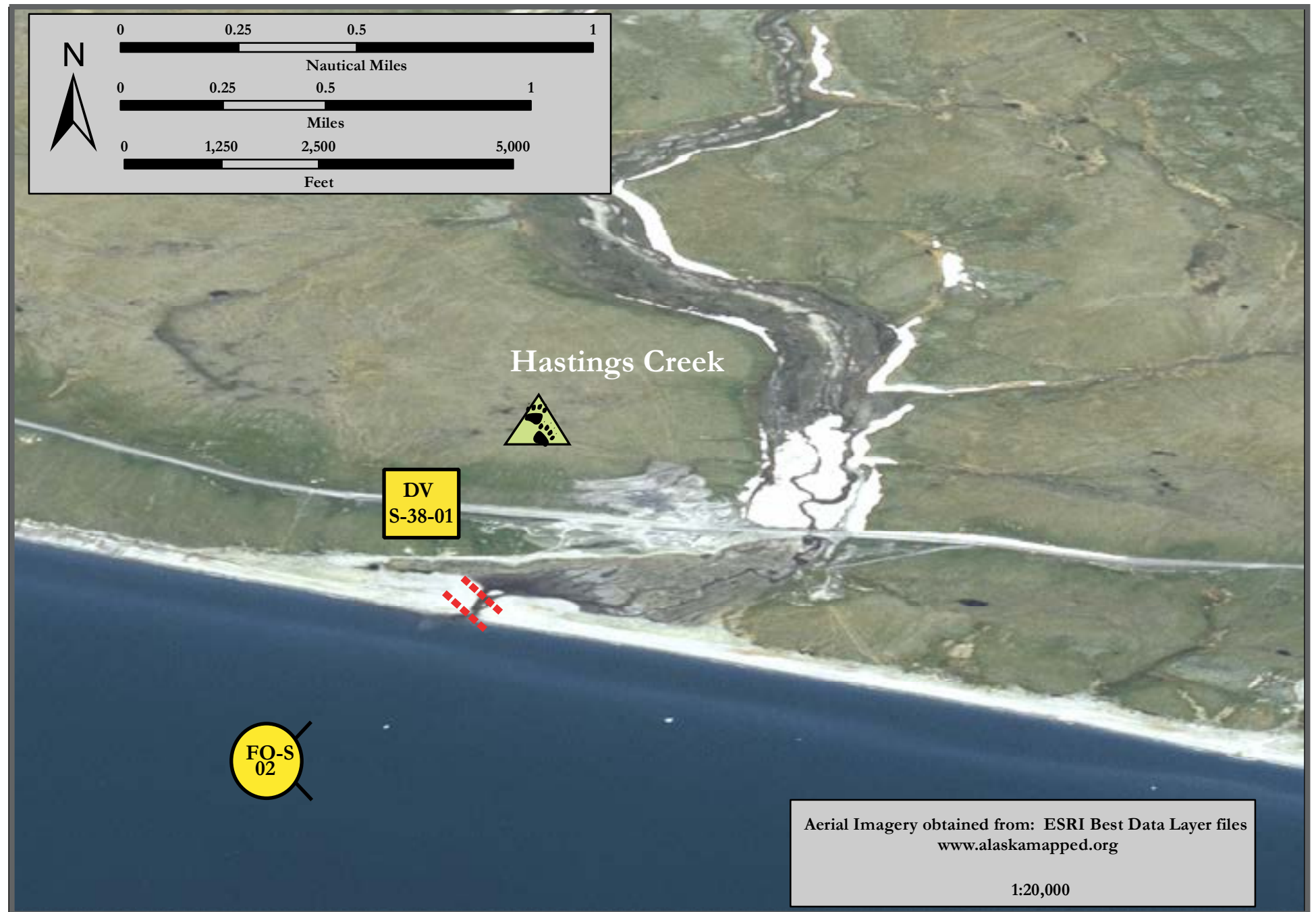
Hastings Creek, NWA-S38



Single Boom Diversion Configuration

Map & Legend

-  Bears in Area, Guards Recommended
-  Free-oil Recovery
-  Diversion Booming
-  Protected-water Boom



Aerial Imagery obtained from: ESRI Best Data Layer files
www.alaskamapped.org
 1:20,000

Latitude 64° 27' 18.5" N
 Longitude 165° 6' 2.2" W

Geographic Response Strategies for Northwest Arctic Subarea, Southern Zone

ID	Location and Description	Response Strategy	Implementation	Response Resources	Staging Area	Site Access	Resources Protected (months)	Special Considerations
S-38-01	<p>Hastings Creek</p> <p>Lat. 64° 27.34' N Lon. 165° 08.57' W</p> <p>Hastings Creek is ~10 feet wide and 8" deep. The creek substrate is composed of alluvial gravels and sand.</p>	<p>Divert and Collect</p> <p>Divert oil to designated shoreside recovery site.</p>	<p>Deploy anchors and boom with skiffs (class 6).</p> <p>Place 300 ft. of swift-water boom in front of the mouth of the creek to divert oil to designated shoreside recovery site. If the sea state does not allow this deployment, move inside the entrance until the boom is able to hold.</p> <p>Tend throughout the tide.</p>	<p>Deployment Equipment</p> <p>300 ft. protected-water boom</p> <p>4 Anchor systems</p> <p>4 Anchor stakes</p> <p>Vessels</p> <p>1 Class 6</p> <p>Personnel/Shift</p> <p>3 Vessel crew</p> <p>Tending Vessels</p> <p>1 Class 6</p> <p>Personnel/Shift</p> <p>2 Vessel crew</p>	None	Via marine waters Chart 16200_1	<p>Fish- dolly varden, pink salmon</p> <p>Birds- seabird nesting, sand hill cranes, ptarmigan</p> <p>Marine mammals- seals</p> <p>Habitat- gravel beaches</p> <p>Terrestrial mammals- hares, muskox red fox, brown bear, ground squirrels</p> <p>Human Use: Commercial Fishing</p>	<p>Vessel master should have local knowledge.</p> <p>FOSC Historic Properties Specialist should REPORT effects to Historic Properties in the area.</p> <p>Drift net fishing occurs from fish ramps.</p> <p>Survey: Yes</p> <p>Tested: September 2015</p>
S-38-02	<p>Hastings Creek</p> <p>Nearshore waters in the general area of:</p> <p>Lat. 64° 26.53'N Lon. 165° 08.21' W</p>	<p>Free-oil Recovery</p> <p>Maximize free-oil recovery in the offshore & nearshore environment of Hastings Creek depending on spill location and trajectory.</p>	<p>Deploy free-oil recovery strike teams upwind and up current of Hastings Creek.</p> <p>Use aerial surveillance to locate incoming slicks.</p>	<p>Deploy multiple free-oil recovery strike teams as required to maximize interception of oil before it impacts sensitive areas.</p>	None	Via marine waters Chart 16200_1	Same as S-38-01	<p>Vessel master should have local knowledge.</p> <p>Use extreme caution, shoal waters with rocks hazards.</p>