





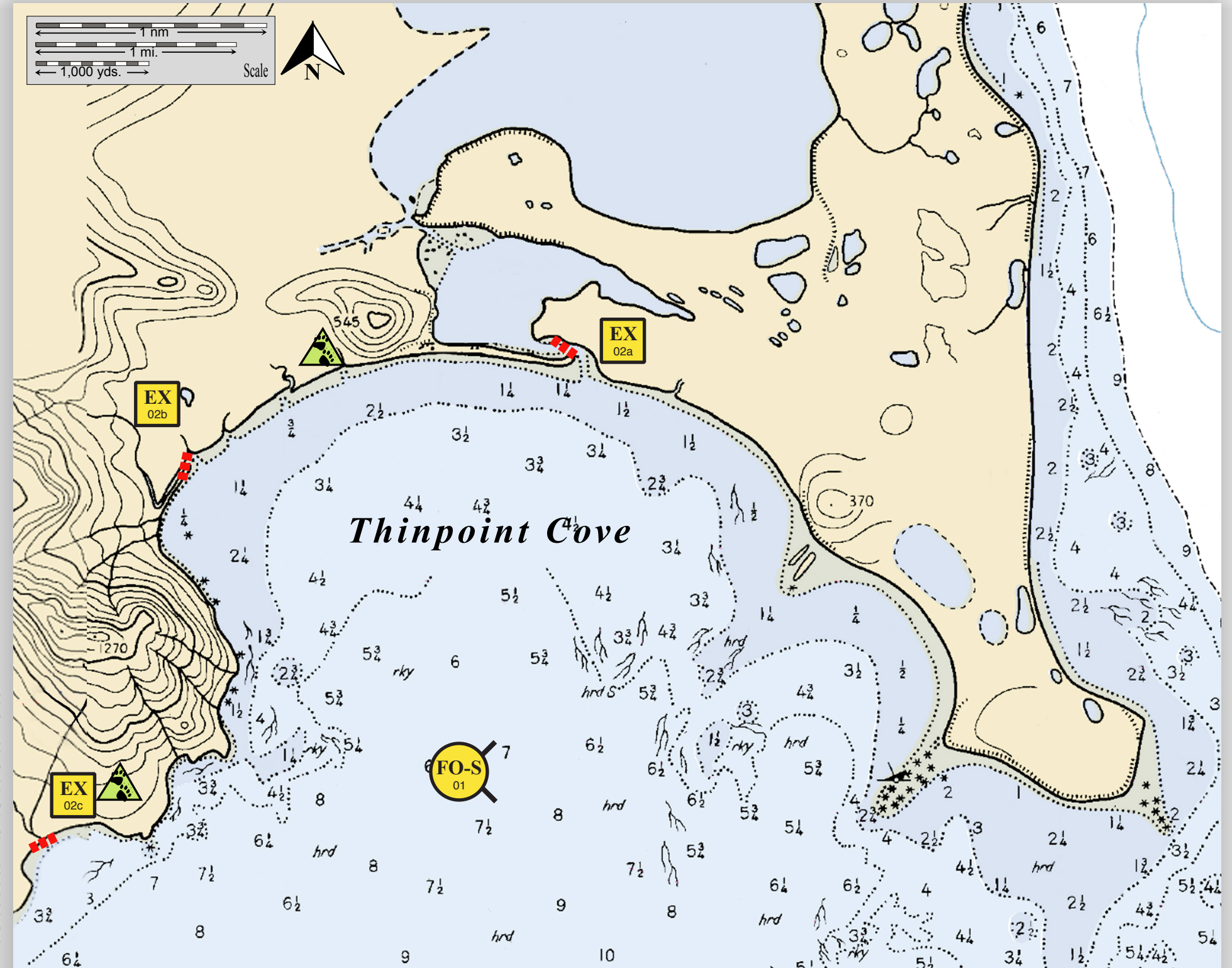
-  Free-oil Containment and Recovery, Shallow Water
-  Exclusion Booming
-  Protected-water Boom
-  Bears in Area, Guards Recommended

There are no photos available at this time for this GRS site.

Thinpoint Cove, AEA-13



Center of map at 54° 58.849' N Lat., 162° 39.527' W Lon.

Geographic Response Strategies for Aleutians Subarea



This is not intended for navigational use.

Soundings in fathoms

ID	Location and Description	Response Strategy	Implementation	Response Resources	Staging Area	Site Access	Resources Protected (months)	Special Considerations
AEA-13-01 	Thinpoint Lagoon Nearshore waters in the general area of: Lat. 54°59.06'N Lon. 162°39.95'W	Free-oil Recovery Maximize free-oil recovery in the offshore & nearshore environment of Thinpoint Lagoon depending on spill location and trajectory.	Deploy free-oil recovery strike teams upwind and up current of Thinpoint Lagoon. Use aerial surveillance to locate incoming slicks.	Deploy multiple free-oil recovery strike teams as required to maximize interception of oil before it impacts sensitive areas.	Vessel platform.	Via marine waters Chart 16535-1	Same as AEA-13-02	Vessel master should have local knowledge. Use extreme caution, shoal waters with numerous reefs and rocks.
AEA-13-02 	Thinpoint Lagoon Stream Locations a. Lat. 54°59.97'N Lon. 162°38.91'W b. Lat. 54°59.31'N Lon. 162°42.81'W c. Lat. 54°57.10'N Lon. 162°44.30'W This area is highly exposed and subject to high surf. Beach access may not be possible via skiff. Consider helicopter deployment.	Exclusion Exclude oil from impacting the identified streams and intertidal areas in Thinpoint Lagoon.	Deploy anchors and boom with skiffs at high tide. Place protected water boom at an across the mouth of the stream at the high tide mark. Tend throughout the tide. <u>Boom Lengths:</u> a. 150 ft. b. 100 ft. c. 100 ft.	Deployment Equipment 350 ft. protected-water boom 3 ea. small anchor systems 24 ea. anchor stakes Vessels 1 ea. class 6 Personnel/Shift 2 ea. vessel crew/general techs Tending Vessels 1 ea. class 6 Personnel/Shift 2 ea. vessel crew	Vessel platform.	Via marine waters Chart 16535-1	Fish- intertidal spawning-salmon (May-Sept.) Birds- waterfowl concentration, seabird nesting Human use- commercial fishing, sport fishing Habitat- marsh, exposed rocky shoreline, gravel beach, eel grass	Site surveyed 5/08/08. A large population of bears forage on the tidal flats in the spring and are present during salmon runs. A bear guard is required. FOSC Historic Properties Specialist should INSPECT this site prior to deployment. Title 16 permitting required from ADF&G. Tested: not yet