



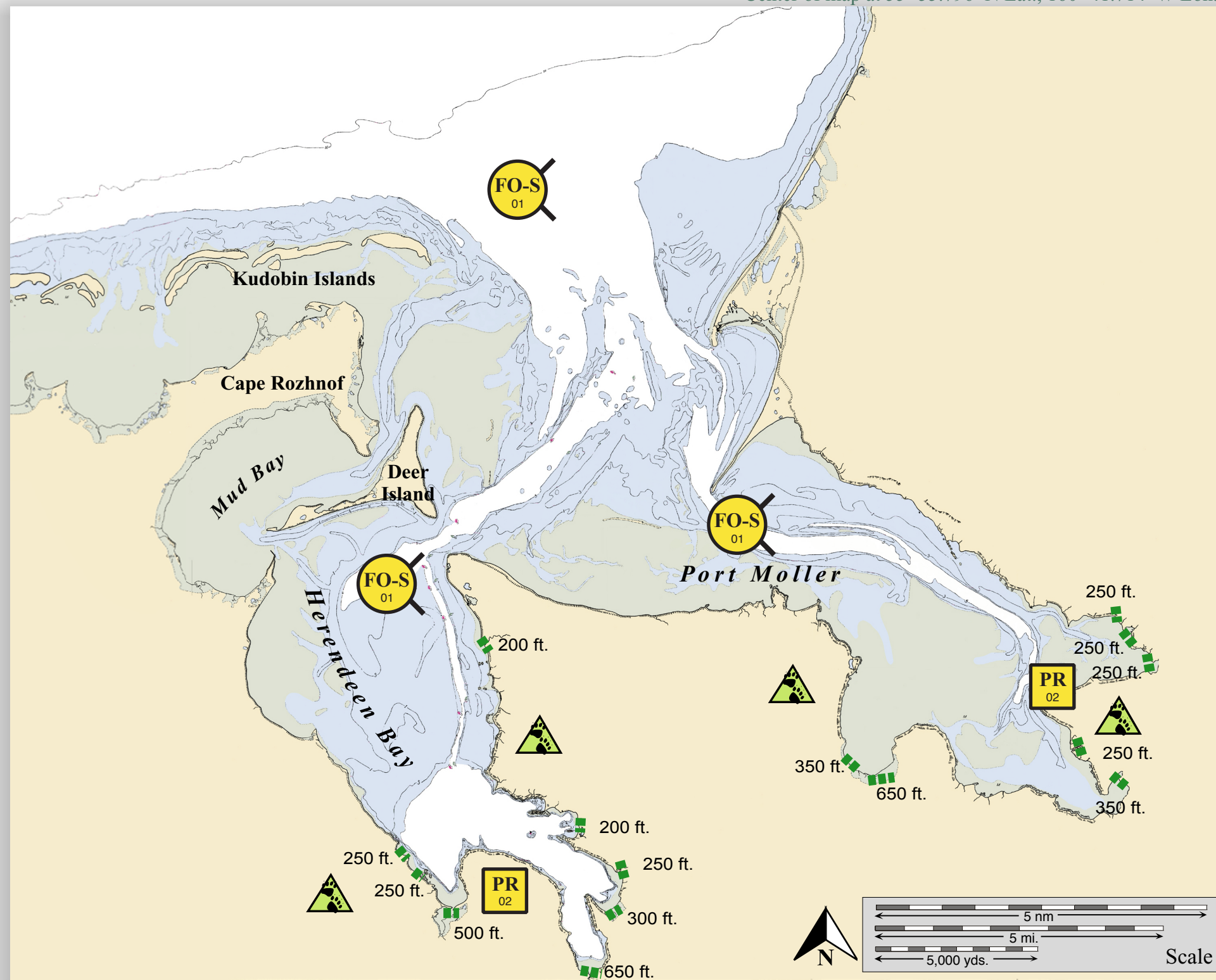


-  Free-oil Containment and Recovery, Shallow Water
-  Passive Recovery
-  Snare or Sorbent Boom
-  Bears in Area, Guards Recommended

Port Moller, AEA-20

Center of map at 55° 55.796' N Lat., 160° 41.714' W Lon.



Geographic Response Strategies for Aleutians Subarea



There are no photos available at this time for this GRS site.

This is not intended for navigational use.

Soundings in fathoms

ID	Location and Description	Response Strategy	Implementation	Response Resources	Staging Area	Site Access	Resources Protected (months)	Special Considerations
AEA-20-01 	Port Moller Nearshore waters in the general area of: Lat. 55°14.56'N Lon. 162°57.57'W	Free-oil Recovery Maximize free-oil recovery in the offshore & nearshore environment of Port Moller depending on spill location and trajectory.	Deploy free-oil recovery strike teams upwind and up current of Port Moller. Use aerial surveillance to locate incoming slicks.	Deploy multiple free-oil recovery strike teams as required to maximize interception of oil before it impacts sensitive areas.	Vessel platform	Via marine waters Chart 16363-1	Same as AEA-20-02	Vessel master should have local knowledge. Use extreme caution, shoal waters with numerous reefs and rocks.
AEA-20-02 	Port Moller and Herendeen Bays Salmon Streams throughout the area. This strategy is designed as a guide to responders in the event of an oil spill in the Port Moller and Herendeen Bay area.	Passive Recovery Place passive recovery tactics across the salmon streams to exclude and recover oil in the area. The locations and lengths of boom should be determined during aerial survey.	Using a skiff where possible and helicopter deployment for all others. Place and anchor snare or sorbent boom at the high tide line across the salmon streams in the Port Moller and Herendeen Bay area.	Deployment Equipment <i>(all estimates are approximate)</i> 4950 ft. snare or sorbent boom 15 ea. small anchor systems 60 ea. anchor stakes Vessels 1 ea. helicopter 1 ea. inflatable raft 1 ea. skiff Personnel/Shift 4 ea. vessel crew/spill tech Tending Vessels 1 ea. helicopter Personnel/Shift 2 ea. vessel crew/spill tech	Port Moller Airport	Via marine waters Chart 16363-1	Fish- intertidal spawning-salmon (May-Sept.), herring spawning (April-May) Birds- waterfowl concentration- threatened species present, shorebird concentration Marine mammals- seals, otters, walrus Human use- Commercial fishing Habitat- eel grass, marsh, gravel beach, exposed rocky shoreline	Vessel master should have local knowledge. Title 16 permitting required from ADF&G. A large population of bears forage on the tidal flats in the spring and are present during salmon runs. A bear guard is required. FOSC Historic Properties Specialist should INSPECT this site prior to deployment. THREATENED OR ENDANGERED SPECIES/HABITAT POSSIBLE/PRESENT. Discuss with DOI prior to on-site operations. Use aerial surveys to determine oil trajectory and priority sites. Site not surveyed.