

Kulukak & Qaniq River, BB-N08

Center of map at 58° 54.34' N Lat., 159° 40.31' W Lon.




The Qaniq River as viewed from the west.

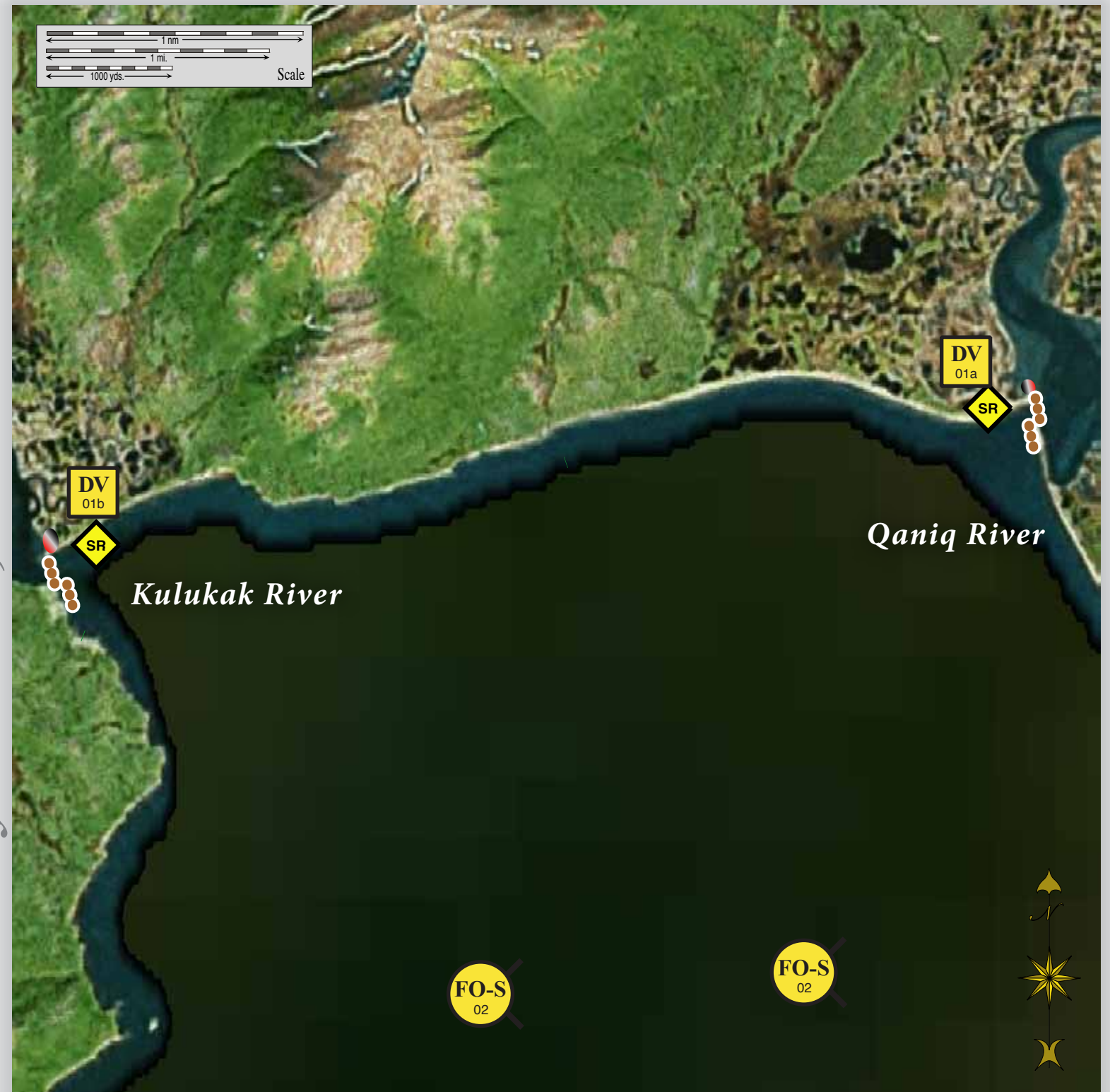


The Qaniq River as viewed from the north.



Legend Map

-  FO-S Free-oil Recovery
-  DV Diversion Booming
-  SR Shoreside Recovery
-  Protected-water Boom
-  Tidal-seal Boom

Geographic Response Strategies for Bristol Bay Subarea, Northern Zone



This is not intended for navigational use.

ID	Location and Description	Response Strategy	Implementation	Response Resources	Staging Area	Site Access	Resources Protected (months)	Special Considerations
N-08-01 	Kulukak & Qaniq Rivers a. Lat. 58° 57.07'N Lon. 160°39.94'W b. Lat. 58° 57.29'N Lon. 160°29.28'W	Divert and Collect Divert oil to shore side collection location on the shore of the Kulukak River.	Deploy anchors and boom with skiffs (class 6). At each location cascade 2 sections of fast-water boom at the proper angle to divert incoming oil to the collection sites. Complete the array with 60 ft. of tidal seal boom on the shore that will be used as a collection site. Set up shore-side recovery and tend throughout the tide. Boom Lengths: a. 800 ft b. 650 ft	Deployment Equipment 1450 ft. fast-water boom 120 ft. tidal seal boom 12 ea. anchor systems 8 ea. anchor stakes 2 ea. shore-side recovery systems Vessels 1 ea. class 3 2 ea. class 6 Personnel/Shift 7 ea. vessel crew/general techs 2 ea. response techs Tending Vessels 1 ea. class 3 1 ea. class 6 Personnel/Shift 4 ea. vessel crew/general techs 2 ea. skilled tech	Vessel Platform	Via marine waters Chart 16315	Fish- intertidal spawning- salmon (June-Sept.), capelin, sheefish, white fish Birds-waterfowl, seabird and shorebird concentration Habitat- exposed tidal flats, peat shoreline, marsh, Human use-subsistence, commercial fishing	Vessel master should have local knowledge. Take precautions to protect the shoreline as outlined in the Alaska STAR Manual. Title 41 permitting required from ADNDR. THREATENED OR ENDANGERED SPECIES/HABITAT POSSIBLE. Discuss with DOI prior to on-site operations A large population of bears are in this area. Bear guard required. Surveyed: not yet Tested: not yet
N-08-02 	Kulukak & Qaniq Rivers Nearshore waters in the general area of: Lat. 58° 54.34'N Lon. 159°40.31'W	Free-oil Recovery Maximize free-oil recovery in the offshore & nearshore environment of Kulukak Bay depending on spill location and trajectory.	Deploy free-oil recovery strike teams upwind and up current of the Kulukak Bay. Use aerial surveillance to locate incoming slicks.	Deploy multiple free-oil recovery strike teams as required to maximize interception of oil before it impacts sensitive areas.	Togiak	Via marine waters Chart 16315	Same as N-08-02	Vessel master should have local knowledge. Use extreme caution, shallow waters with shifting channels and bars.

NOTE: Sensitive resource information can be found on other maps which can be accessed through the sensitive area section of the Bristol Bay Subarea Contingency Plan: http://dec.alaska.gov/spar/perp/plans/scp_bb.htm.