



The entrance to South Cinder River viewed from the northwest.

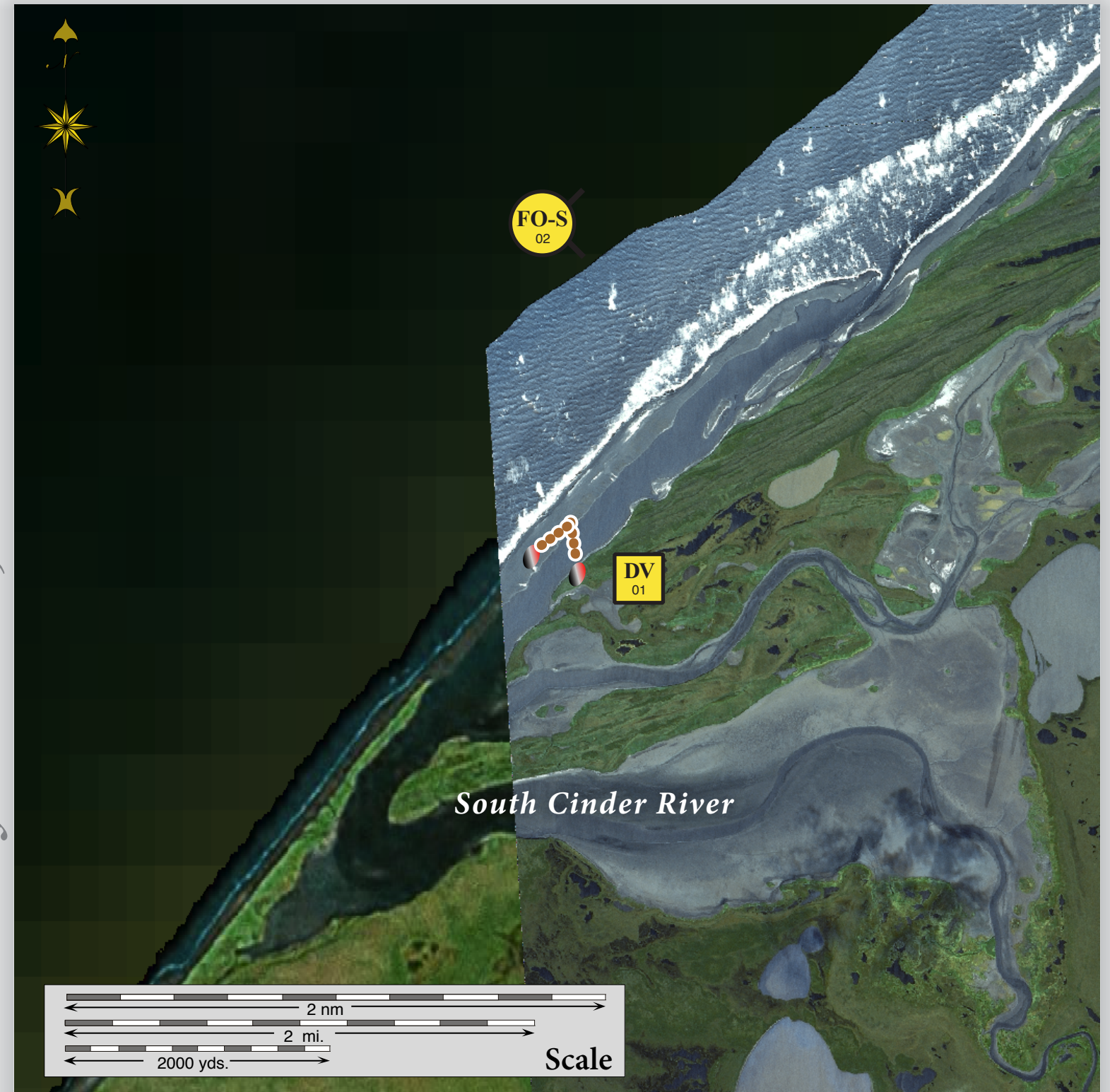


South Cinder River viewed from the east.

Geographic Response Strategies for
Bristol Bay Subarea, Northern Zone

South Cinder River, BB-N16

Center of map at 57° 17.14' N Lat., 158° 19.10' W Lon.



Map
Legend



Free-oil Recovery



Diversion Booming

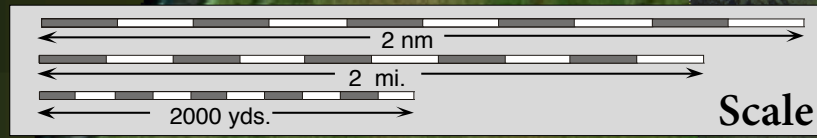
Fast-water Boom



Tidal-seal Boom





Bears in Area, Guards Recommended



Scale

This is not intended for navigational use.

ID	Location and Description	Response Strategy	Implementation	Response Resources	Staging Area	Site Access	Resources Protected (months)	Special Considerations
N-16-01 	South Cinder River a. Lat.57° 15.97'N Lon.158°20.25'W b. Lat.57° 16.52'N Lon.158°17.50'W	Exclusion Exclude oil from impacting the South Cinder River.	Deploy anchors and boom with skiffs (class 6) at high tide. At both locations place fast-water boom in a chevron pattern in front of the entrances to the river. Complete the array by placing 60 ft. of tidal seal boom on each leg. Tend throughout the tide.	Deployment Equipment 1350 ft. fast-water boom 240 ft. tidal seal boom 8 ea. anchor systems 8 ea. anchor stakes Vessels 1 ea. class 3 2 ea. class 6 Personnel/Shift 7 ea. vessel crew/general techs Tending Vessels 1 ea. class 3 1 ea. class 6 Personnel/Shift 4 ea. vessel crew/general techs	Pilot Point/ Port Heiden	Via marine waters Chart 16338	Fish- intertidal spawning- salmon (June-Sept.) Birds-waterfowl, seabird and shorebird concentration Marine mammals- seals, otters Habitat- exposed tidal flats, sheltered tidal flats, marsh Human use- subsistence, commercial fishing	Vessel master should have local knowledge. A large population of bears are present in the area. A bear guard is required. Title 41 permitting required from ADNR. THREATENED OR ENDANGERED SPECIES/HABITAT POSSIBLE. Discuss with DOI prior to on-site operations. Surveyed: not yet Tested: not yet
N-16-02 	South Cinder River Nearshore waters in the general area of: Lat. 57° 17.14'N Lon. 158°19.10'W	Free-oil Recovery Maximize free-oil recovery in the offshore & nearshore environment of South Cinder River depending on spill location and trajectory.	Deploy free-oil recovery strike teams upwind and up current of the South Cinder River. Use aerial surveillance to locate incoming slicks.	Deploy multiple free-oil recovery strike teams as required to maximize interception of oil before it impacts sensitive areas.	Pilot Point/ Port Heiden	Via marine waters Chart 16338	Same as N-16-01	Vessel master should have local knowledge. Use extreme caution, shallow waters with shifting channels and bars.

NOTE: Sensitive resource information can be found on other maps which can be accessed through the sensitive area section of the Bristol Bay Subarea Contingency Plan: http://dec.alaska.gov/spar/perp/plans/scp_bb.htm.