

Map  
& Photo

Legend



PR-03 viewed from the north.

-  Free-oil Recovery
-  Passive Recovery
-  Protected-water Boom
-  Exclusion Booming
-  Tidal-seal Boom

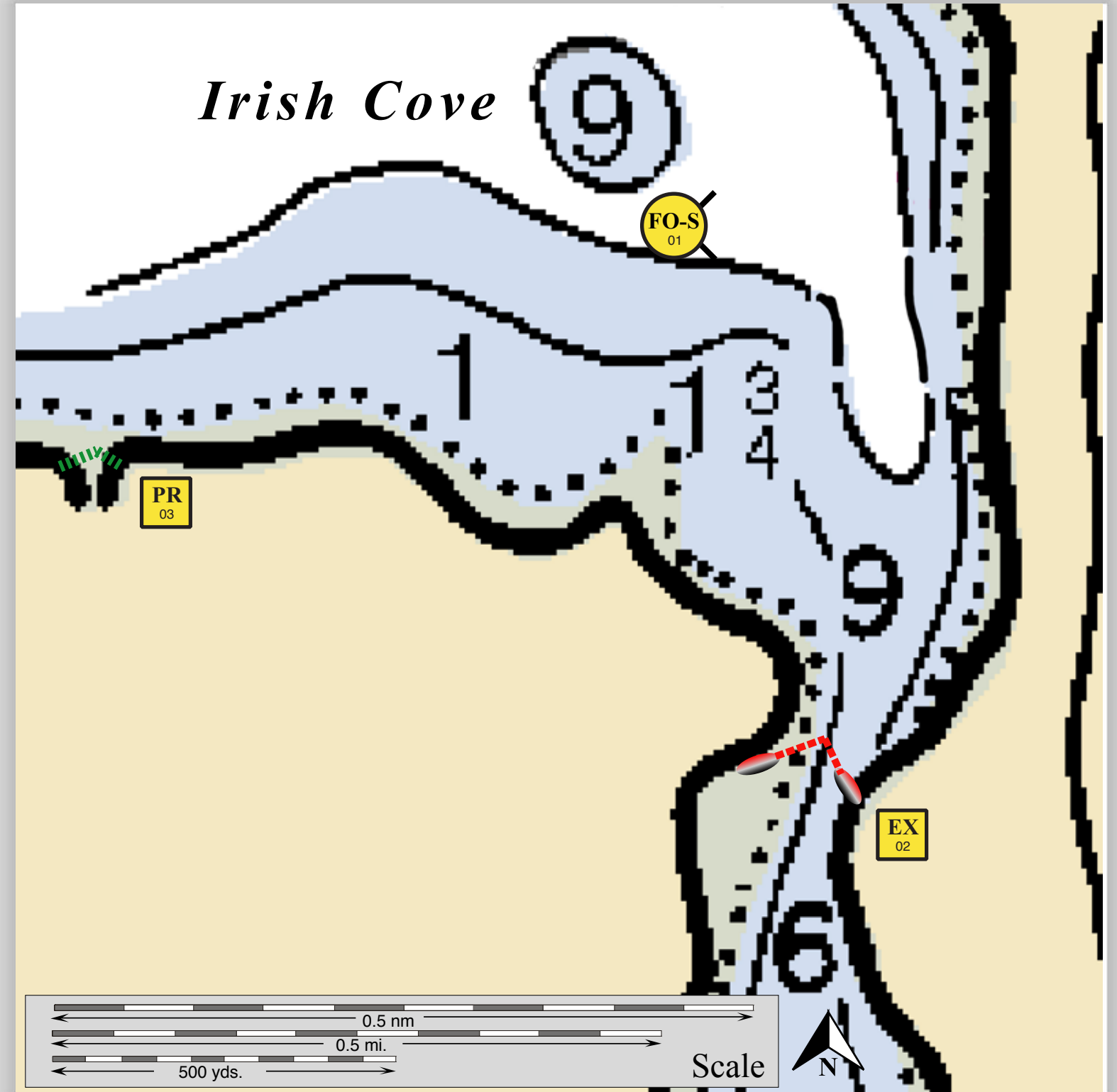


Irish cove entrance viewed from the northeast.




Geographic Response Strategies for  
Northeast Prince William Sound Subarea

# Irish Cove, PWS-NE33

Center of map at 60° 45.9' N Lat., 146° 26.7' W Lon.



This is not intended for navigational use.

ID	Location and Description	Response Strategy	Implementation	Response Resources	Staging Area	Site Access	Resources Protected (months)	Special Considerations
NE-33-01 	<b>Irish Cove</b> Nearshore waters in the general area of: Lat. 60° 46.6 N Lon. 146°27.7 W	<b>Free-oil Recovery</b> Maximize free-oil recovery in the offshore & nearshore environment of Irish Cove depending on spill location and trajectory.	Deploy free-oil recovery strike teams upwind and up current of Irish Cove.  Use aerial surveillance to locate incoming slicks.	Deploy multiple free-oil recovery strike teams as required to maximize interception of oil before it impacts sensitive areas.	Valdez/ Tatitlek Harbor	Via marine waters  Chart 16708-1	Same as NE-33-02	Vessel master should have local knowledge.  Use extreme caution, shoal waters with numerous reefs and rocks.
NE-33-02 	<b>Irish Cove</b> Lat. 60° 46.04 N Lon. 146°26.81 W	<b>Exclusion</b> Exclude oil from impacting the identified stream and intertidal area in Irish Cove.	Deploy anchors and boom with skiffs (class 6) at high tide.  Place 50 ft. sections of tidal-seal boom on each shore. Complete the exclusion with 900 ft. protected-water boom in a chevron formation in Irish Cove.  Tend throughout the tide.	<b>Deployment</b> <b>Equipment</b> 900 ft. protected-water boom 150 ft. tidal-seal boom 6 ea. small anchor systems 4 ea. anchor stakes <b>Vessels</b> 1 ea. class 3/4 1 ea. class 6 <b>Personnel/Shift</b> 5 ea. vessel crew <b>Tending</b> <b>Vessels</b> 1 ea. class 3/4 1 ea. class 6 <b>Personnel/Shift</b> 3 ea. vessel crew	Vessel platform	Via marine waters  Chart 16708-1	Fish- intertidal spawning- salmon (May-Sept.), herring spawning (April-May)  Birds-waterfowl concentration,  Marine mammals- seals, otters  Habitat- marsh, sheltered tidal flats	Vessel master should have local knowledge.  Site Surveyed: 9/02/10  Tested: not yet
NE-33-03 	<b>Irish Cove</b> Lat. 60° 50.36 N Lon. 146°23.71 W	<b>Passive Recovery</b> Place passive recovery across the small stream Adjacent to Irish Cove	On a flooding tide, use skiffs (class 6) and place and anchor 200 ft. section of snare line or sorbent boom across the stream directly outside of Irish Cove.  Replace as necessary to maximize the recovery.	<b>Deployment</b> <b>Equipment</b> 200 ft. snare line or sorbent boom 1 ea. small anchor systems 4 ea. anchor stakes <b>Vessels/Personnel/Shift</b> Same as NE-33-02 <b>Tending</b> <b>Vessels/Personnel/Shift</b> Same as NE-33-02	Vessel platform	Via marine waters  Chart 16708-1	Same as NE-33-02	Use snare line for persistent oils and sorbent boom for non-persistent oils.  Title 41 permitting required from ADNR.  Tested: not yet

NOTE: Sensitive resource information can be found on other maps which can be accessed through the sensitive area section of the PWS Sub-Area Contingency Plan: [http://dec.alaska.gov/spar/perp/plans/scp\\_pws.htm](http://dec.alaska.gov/spar/perp/plans/scp_pws.htm).