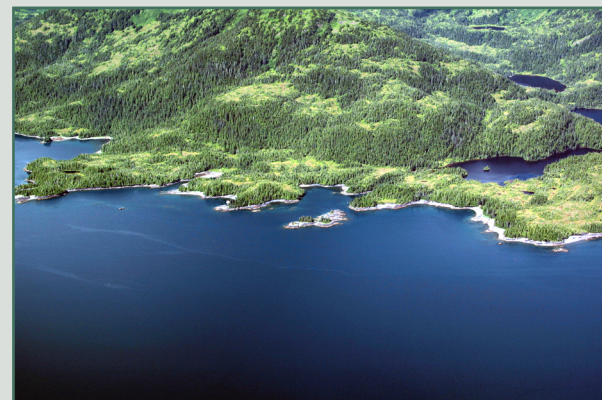


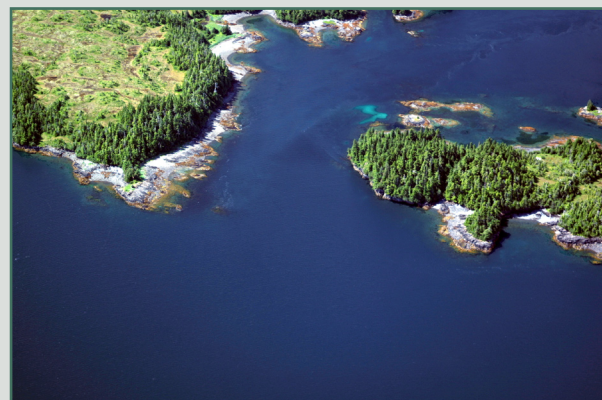
Map & Photo Legend



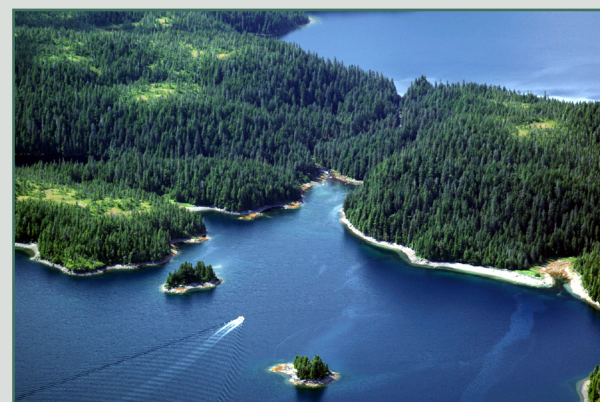
SW-09 Eshamy Bay, Lagoon and Lake viewed from the east.









SW-09-02b,c North shore of Eshamy Bay viewed from the southeast.



SW-09-02a Entrance to Eshamy Lagoon viewed from the east.



SW-09-02e West end of Eshamy Lagoon viewed from the northeast.

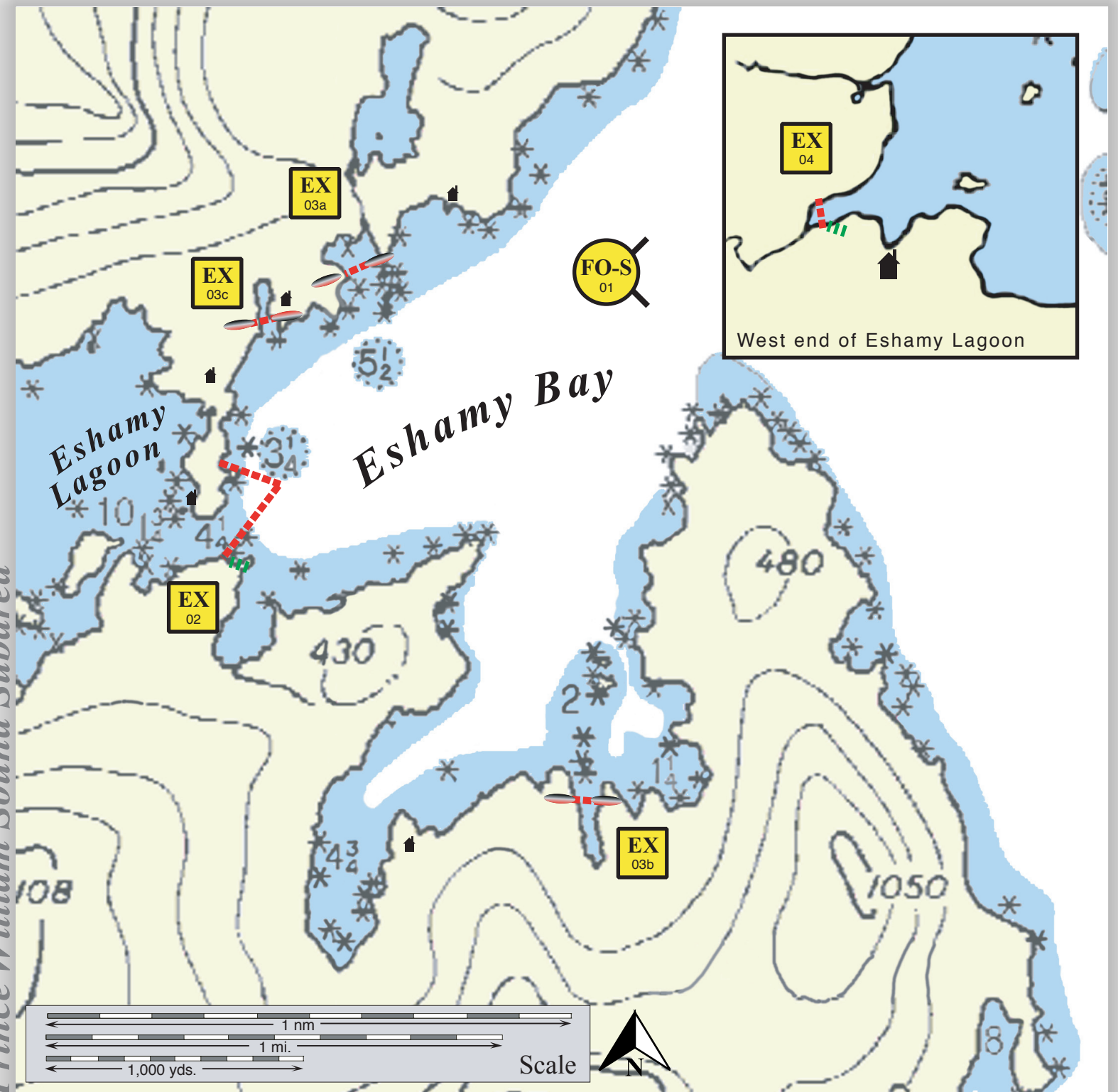
-  Free-oil Containment and Recovery, Shallow Water
-  Exclusion Booming
-  Protected-water Boom
-  Tidal-seal Boom
-  Passive Collection (Snare Line)
-  Cabins

Geographic Response Strategies for

Prince William Sound Subarea

Eshamy Lagoon, PWS-SW09

Center of map at 60° 27.8' N Lat., 147° 59.4' W Lon.



This is not intended for navigational use.

Soundings in fathoms

ID	Location and Description	Response Strategy	Implementation	Response Resources	Staging Area	Site Access	Resources Protected (months)	Special Considerations
SW-09-01	Eshamy Lagoon Nearshore waters in the general area of: Lat. 60° 27.94 N Lon. 148°59.15 W	Free-oil Recovery Maximize free-oil recovery in the offshore & nearshore environment of Eshamy Bay depending on spill location and trajectory.	Deploy free-oil recovery strike teams upwind and up current of Eshamy Bay. Use aerial surveillance to locate incoming slicks.	Deploy multiple free-oil recovery strike teams as required to maximize interception of oil before it impacts sensitive areas.	Whittier or Valdez	Via marine waters Chart 16705-1	Same as SW-09-02	Vessel master should have local knowledge. Site surveyed: 7/15/03 PWS GRS Tactics Committee
SW-09-02	Eshamy Lagoon Entrance Lat. 60° 27.74 N Lon. 148°00.35 W	Exclusion Exclude oil from entering Eshamy Lagoon.	Transport equipment by vessel (class 2/3/4). Deploy boom with skiffs (class 6) and large anchor with fishing vessel (class 3/4). Place boom in a chevron pattern at the entrance of Eshamy Lagoon. Current is sufficient to require a large anchor at the apex. If necessary, place sorbent boom or pads on shore to collect oil. Tend throughout the tide.	Deployment Equipment 2000 ft. protected-water boom 1 ea. anchor system (~1000 lbs.) 8 ea. anchor systems (~40 lbs.) 4 ea. anchor stakes Vessels 1 ea. class 2 2 ea. class 3/4 2 ea. class 6 Personnel/Shift 14 ea. vessel crew Tending Vessels 1 ea. class 3/4 1 ea. class 6 Personnel/Shift 3 ea. vessel crew	Vessel platform	Via marine waters Chart 16705-1	Fish- intertidal spawning- salmon, herring. Birds- Sea bird nesting/foraging, eagle nest (May-Sept.), waterfowl concentration. Habitat-marsh, sheltered rocky shoreline Marine mammals-otters Human use-high recreational use (May–Sept.), commercial fishing.	Vessel master should have local knowledge. Title 41 permitting required from AKDNR. Site surveyed: 7/15/03 PWS GRS Tactics Committee Tested: not yet
SW-09-03	Eshamy Lagoon a. Lat. 60° 28.16 N Lon. 148°00.35 W b. Lat. 60° 23.34 N Lon. 148°59.81 W c. Lat. 60° 26.94 N Lon. 148°58.66 W	Exclusion Exclude oil from bays and streams in Eshamy Bay.	Transport equipment by vessel (class 2/3/4). Deploy anchors and boom with skiffs (class 6). Place boom at identified locations. Tend throughout the tide. <u>Boom Lengths:</u> a. 350 ft. b. 700 ft. c. 350 ft.	Deployment Equipment 800 ft. protected-water boom 6 section 100 ft. tidal-seal boom 7 ea. anchor systems (~20 lbs.) 12 ea. anchor stakes Vessels/Personnel/Shift Same as SW-09-02 Tending/Vessels/Personnel/Shift Same as SW-09-02	Vessel platform	Via marine waters Chart 16705-1	Same as SW-09-02	Vessel master should have local knowledge. Title 41 permitting required from AKDNR. Site surveyed: 7/15/03 PWS GRS Tactics Committee Tested: not yet
SW-09-04	Eshamy Lagoon-Back of the Lagoon Lat. 60° 27.26 N Lon. 148°05.66 W	Exclusion Exclude oil from stream in Eshamy Lagoon.	Transport equipment by vessel (class 3/4). Deploy anchors and boom with skiffs (class 6). Place boom across the creek at the back Eshamy Lagoon. If necessary, place sorbent boom or pads at the face of the boom to collect oil. Tend throughout the tide.	Deployment Equipment 400 ft. protected-water boom 2 ea. anchor systems (~20 lbs.) 4 ea. anchor stakes Vessels/Personnel/Shift Same as SW-09-02 Tending/Vessels/Personnel/Shift Same as SW-09-02	Vessel platform	Via marine waters Chart 16705-1	Same as SW-09-02	Vessel master should have local knowledge. Title 41 permitting required from AKDNR. Enter lagoon at high tide. Site surveyed: 7/15/03 PWS GRS Tactics Committee Tested: not yet