

Map & Photo Legend








SW-12-02 Point at north end of Stockdale Harbor viewed from the north.



SW-12-03e,f Southeast shoreline of Stockdale Harbor viewed from the north.



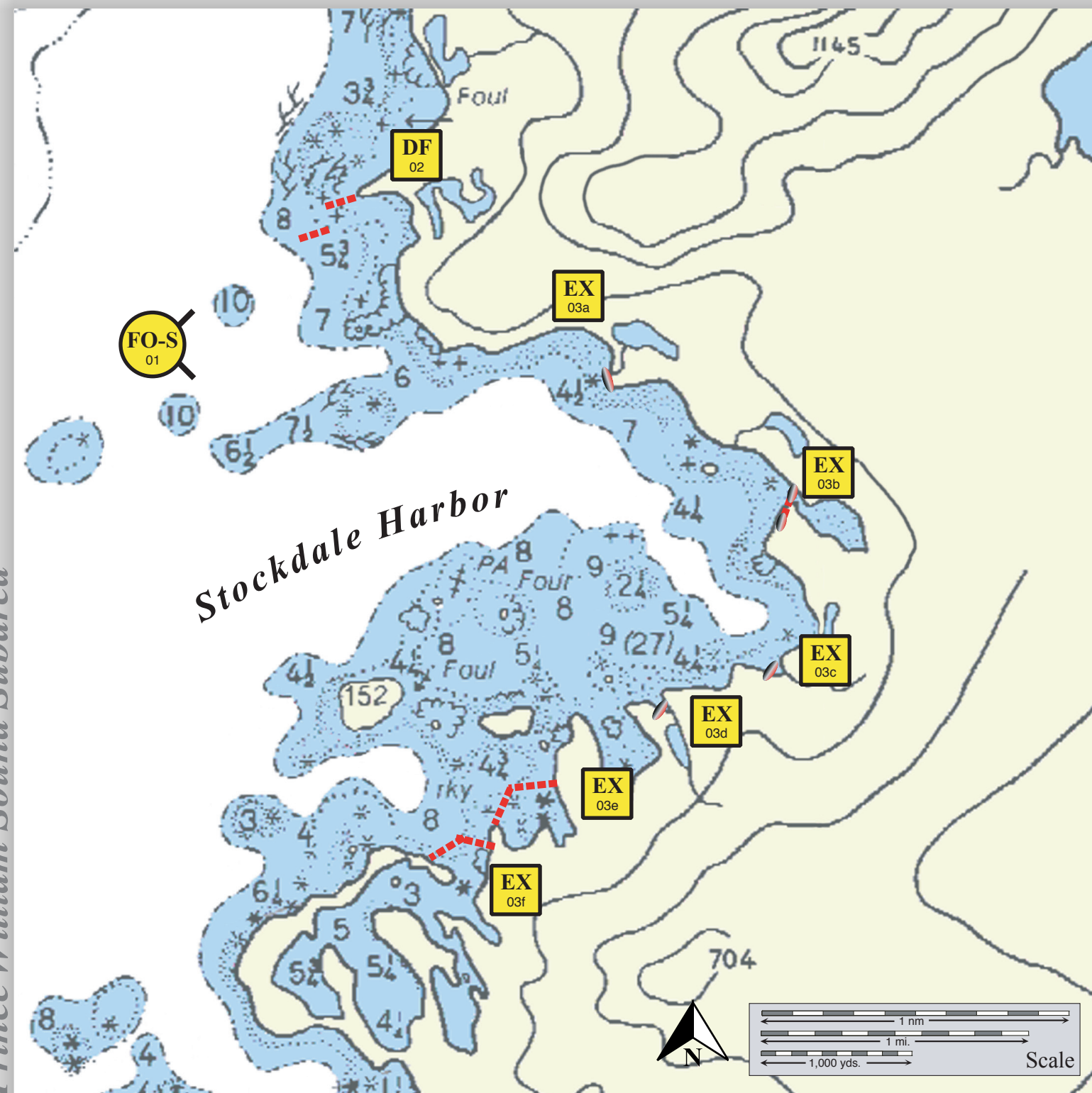
SW-12-03a,b,c Northeast shoreline of Stockdale Harbor viewed from the west.

-  Free-oil Containment and Recovery, Shallow Water
-  Exclusion Booming
-  Deflection Booming
-  Protected-water Boom
-  Tidal-seal Boom

Geographic Response Strategies for Prince William Sound Subarea

Stockdale Harbor, PWS-SW12

Center of map at 60° 18.1' N Lat., 147° 12.3' W Lon.



This is not intended for navigational use.

Soundings in fathoms

ID	Location and Description	Response Strategy	Implementation	Response Resources	Staging Area	Site Access	Resources Protected (months)	Special Considerations
SW-12-01	Stockdale Harbor Nearshore waters in the general area of: Lat. 60° 18.74 N Lon. 147° 14.27W	Free-oil Recovery Maximize free-oil recovery in the offshore & nearshore environment of Stockdale Harbor depending on spill location and trajectory.	Deploy free-oil recovery strike teams upwind and up current of Stockdale Harbor. Use aerial surveillance to locate incoming slicks.	Deploy multiple free-oil recovery strike teams as required to maximize interception of oil before it impacts sensitive areas.	Valdez or Cordova	Via marine waters Chart 16701-1	Same as SW-12-02	Vessel master should have local knowledge. Site surveyed: 7/14/03 GRS Tactics Committee
SW-12-02	Stockdale Harbor Lat. 60° 19.71 N Lon. 147° 13.25 W	Deflection Deflect oil coming from the north away from Stockdale Harbor to free-oil recovery. Deploy this tactic only if oil trajectory is from the north.	Transport equipment to site by marine vessel (class 2/3/4). Deploy boom and anchor system with fishing vessel or skiff (class 3/4/6). Position boom at proper angle to deflect oil from Stockdale Harbor to free-oil recovery. Tend throughout the tide.	Deployment Equipment 1200 ft. protected-water boom 6 ea. anchor systems (~40 lbs.) 4 ea. anchor systems (~200 lbs.) Vessels 1 ea. class 2 2 ea. class 3/4 2 ea. class 6 Personnel/Shift 14 ea. vessel crew Tending Vessels 1 ea. class 3/4 1 ea. class 6 Personnel/Shift 3 ea. vessel crew	Vessel platform	Via marine waters Chart 16701-1	Fish- intertidal spawning-salmon, herring (April-May) Birds-waterfowl nesting, eagle nesting Habitat-marsh, sheltered rocky shoreline Marine Mammals-whales, seal, otters Human use- high recreational use (May-Sept.), commercial fishing,subsistence-terrestrial and marine mammals,birds	Vessel master should have local knowledge. REPORT any cultural resources found during operations to FOSC Historic Properties Specialist. Site surveyed: 7/14/03 GRS Tactics Committee Tested: not yet
SW-12-03	Stockdale Harbor a. Lat. 60° 19.41 N Lon. 147° 11.40 W b. Lat. 60° 18.97 N Lon. 147° 10.17 W c. Lat. 60° 18.41 N Lon. 147° 10.31 W d. Lat. 60° 18.29 N Lon. 147° 11.08 W e. Lat. 60° 18.01 N Lon. 147° 12.01 W f. Lat. 60° 22.39 N Lon. 147° 42.36 W	Exclusion Exclude oil from marsh and streams in Stockdale Harbor.	Transport equipment by vessel (class 2/3/4). Deploy anchors and boom with skiffs (class 6). Place tidal-seal boom directly across the streams on arrays (a),(c) and(d). Use tidal seal and protected-water boom for (b). Protected-water boom for only for (e)&(f). Tend throughout the tide. <u>Boom Lengths:</u> a. 150 ft. b. 600 ft. c. 150 ft. d. 150 ft. e. 2000 ft. f. 1500 ft.	Deployment Equipment 3800 ft. protected-water boom 5 section 150 ft. tidal-seal boom 8 ea. anchor systems (~40 lbs.) 24 ea. anchor stakes Vessels/Personnel/Shift Same as SW-11-02 Tending Vessels/Personnel/Shift Same as SW-11-02	Vessel platform	Via marine waters Chart 16700-1	Same as SW-12-02	Vessel master should have local knowledge. Title 41 permitting required from AKDNR. Site surveyed: 7/14/03 GRS Tactics Committee Tested: not yet