

# Map & Photo Legend



SW-04-02a Iktua Bay stream viewed from the northwest.



SW-04-02c Iktua Bay beach viewed from the north.



SW-04-02b Iktua Bay stream viewed from the northwest.

	Free-oil Recovery, Open Water
	Exclusion Booming
	Passive Collection and Debris Removal, Marine Access
	Protected-water Boom
	Tidal-seal Boom
	Snare Line
	Seal Haulout
	Rock Poses Navigational Hazard
	Eagle Nest

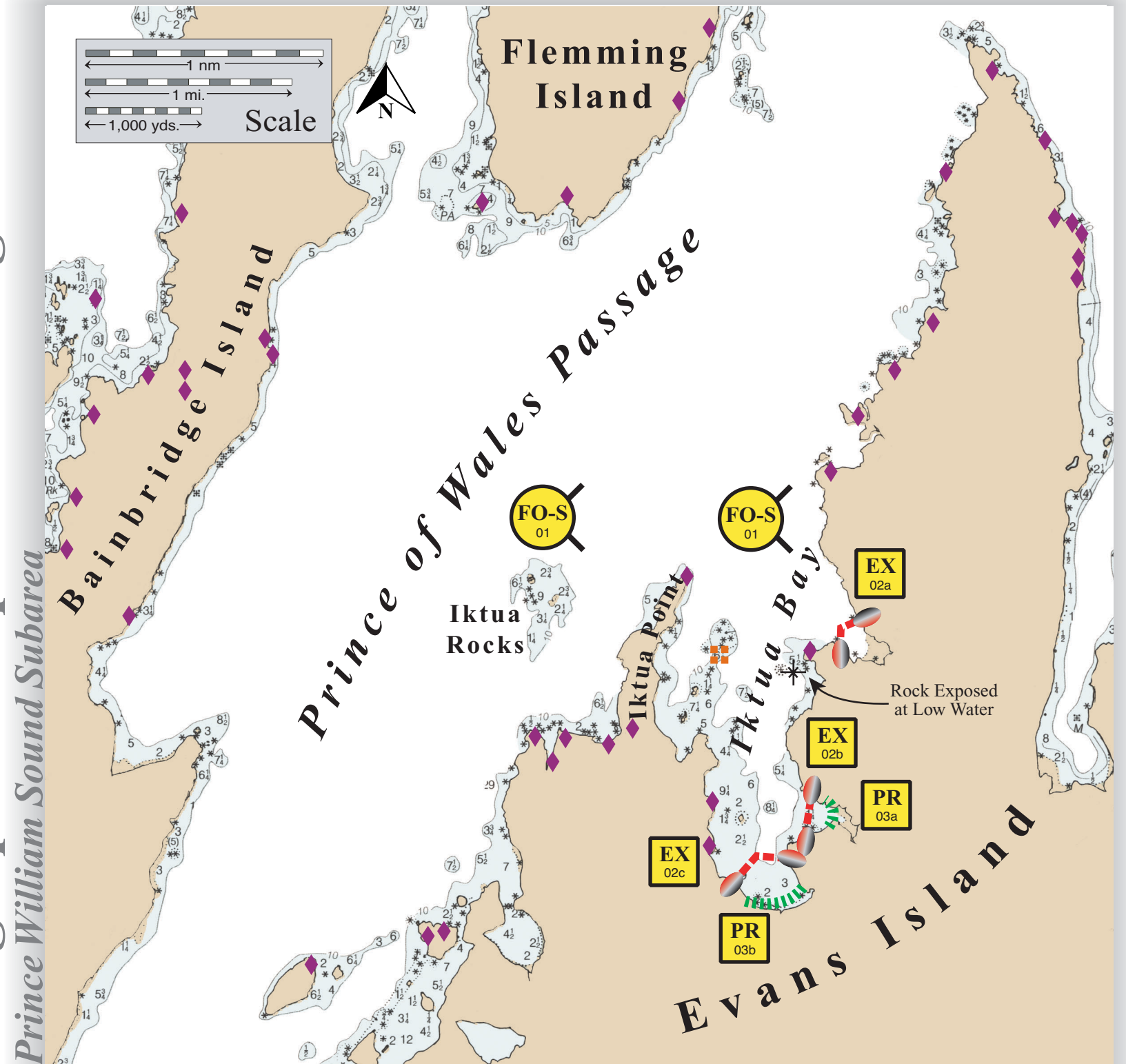


SW-04 Iktua Bay viewed from the north.

## Geographic Response Strategies for

# Iktua Bay, PWS-SW04

Center of map at 60° 07.62' N Lat., 148° 00.67' W Lon.



ID	Location and Description	Response Strategy	Implementation	Response Resources	Staging Area	Site Access	Resources Protected (months)	Special Considerations
PWS SW04-01	<b>Iktua Bay</b> Nearshore waters in the general area of: a. Lat. 60° 07.43 N Lon. 148° 00.30 W  b. Lat. 60° 07.53N Lon. 148° 02.32 W	<b>Free-oil Recovery-Shallow Water</b>  Maximize free-oil recovery in the offshore & nearshore environment of Iktua Bay depending on spill location and trajectory.	Deploy free-oil recovery strike teams upwind and up current of Iktua Bay.  Use aerial surveillance to locate incoming slicks.	Deploy multiple free-oil recovery strike teams as required to maximize interception of oil before it impacts sensitive areas.	Marine	Marine  Chart 16702	Same as PWS-SW04-02	Vessel master should have local knowledge.
PWS SW04-02	<b>Iktua Bay - coves</b> a. Lat. 60° 07.07 N Lon. 147° 59.79 W  b. Lat. 60° 06.21 N Lon. 148° 00.18 W  c. Lat. 60° 06.43 N Lon. 148° 00.62 W	<b>Exclusion</b>  Exclude oil from entering identified coves in Iktua Bay.	Transport equipment by vessel (class 2/3/4).  Deploy anchors and boom with vessels (class 3/4/6).  Place shore-seal boom and protected-water boom across the identified coves in Iktua Bay.  Tend throughout the tide.  <u>Boom lengths and type:</u>  a. 800 ft. protected-water 2 ea. 100 ft. tidal-seal  b. 1300 ft. protected-water 1 ea. 150 ft. tidal-seal (north end) 1 ea. 100 ft. tidal-seal (south end)  c. 1600 ft. protected-water 2 ea. 100 ft. tidal-seal	<b>Deployment Equipment</b> 3700 ft. protected-water boom 650 ft. tidal-seal boom 8 ea. anchor systems (~40 lbs.) 12 ea. anchor stakes <b>Vessels</b> 1 class 2 (transport) 1 class 3/4 1 class 6 <b>Personnel/Shift</b> 5 ea. vessel crew <b>Tending Vessels</b> 1 ea. class 3/4 1 ea. class 6 <b>Personnel/Shift</b> 3 ea. vessel crew	Vessel platform	Marine  Chart 16702  A trail from the village of Chenega to Iktua Bay may provide additional site access.	Marine mammals – seal haulout  Birds-waterfowl (Nov. – Mar.), shorebirds, seabird nesting (April-Aug.)  Fish- salmon  Human use- high recreational use  Habitat-sheltered tidal flats, intertidal resources	Vessel master should have local knowledge.  Upper bay is not a good anchorage  If marine mammals are present at the haulout, a 1000’ minimum separation must be maintained.  FOSC Historic Properties Specialist should INSPECT site prior to operations.  Surveyed, verified and deployed:SERVS June 2001.
PWS SW04-03	<b>Iktua Bay - coves</b> a. Lat. 60° 06.21 N Lon. 148° 00.18 W  b. Lat. 60° 06.43 N Lon. 148° 00.62 W	<b>Passive Recovery</b>  Minimize impact to the tidal flats and subsistence resources in Iktua Bay through passive recovery.	Transport equipment by vessel (class 3/4).  Place and anchor snare line or sorbent boom across the tidal flats in Iktua Bay.  Replace as necessary to maximize the recovery.  Tend throughout the tide.	<b>Deployment Equipment</b> 3300 ft. snare line or sorbent boom 12 ea. anchor stakes <b>Vessels/Personnel/Shift</b> Same as PWS-SW04-02 <b>Tending Vessels/Personnel/Shift</b> Same as PWS-SW04-02	Vessel platform	Marine  Chart 16702	Same as PWS-SW04-02	Use snare boom for persistent oils and sorbent boom for non-persistent oils.  Surveyed, verified: SERVS June 2001