

Map & Photo Legend



SW-06 Unnamed Bay viewed from the north.

	Free-oil Recovery, Shallow Water		Snare Line
	Exclusion Booming		Tidal-seal Boom
	Passive Recovery and Debris Removal		Eagle Nest
	Protected-water Boom		



SW-06-02 Unnamed Bay stream viewed from the northwest.

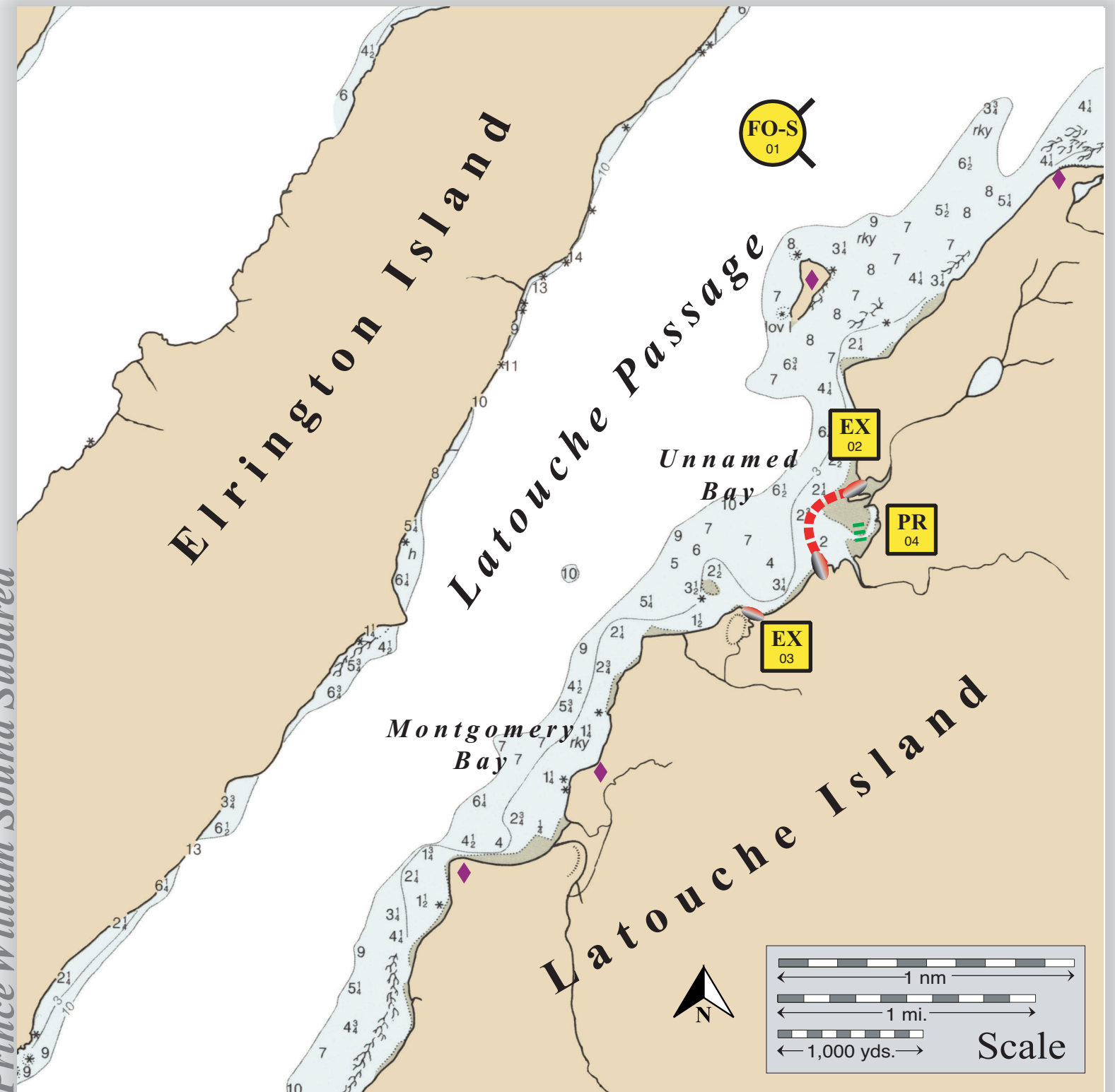
NOTES:
This tactic needs to be deployed at high tide. There are navigation hazards at low tide.

Geographic Response Strategies for

Prince William Sound Subarea

Unnamed Bay, PWS-SW06

Center of map at 59° 59.85' N Lat., 147° 59.08' W Lon.



This is not intended for navigational use.

Soundings in fathoms

ID	Location and Description	Response Strategy	Implementation	Response Resources	Staging Area	Site Access	Resources Protected (months)	Special Considerations
PWS SW06-01	Unnamed Bay Nearshore waters in the general area of: Lat. 59° 59.78 N Lon. 147° 59.20 W	Free-oil Recovery-Shallow Water Maximize free-oil recovery in the offshore & nearshore environment of Unnamed Bay depending on spill location and trajectory.	Deploy free-oil recovery strike teams upwind and up current of Unnamed Bay. Use aerial surveillance to locate incoming slicks.	Deploy multiple free-oil recovery strike teams as required to maximize interception of oil before it impacts sensitive areas.	Marine	Marine Chart 16702-1	Same as PWS-SW06-02	Vessel master should have local knowledge. Strong current in mid-channel at max flood
PWS SW06-02	Unnamed Bay Lat. 59° 59.85 N Lon. 147° 59.08 W	Exclusion Exclude oil from entering Unnamed Bay.	Transport equipment by vessel (class 2/3/4). Deploy anchors and boom with fishing vessels and skiffs (class 3/4/6). Place tidal-seal boom and protected-water boom across the entrance to Unnamed Bay. Tend throughout the tide.	Deployment Equipment 2100 ft. protected-water boom 4 section ≥400 ft. tidal-seal boom 8 ea. anchor systems (~40 lbs.) 6 ea. anchor stakes Vessels 1 class 3/4 1 class 6 Personnel/Shift 5 ea. vessel crew Tending Vessels 1 ea. class 3/4 1 ea. class 6 Personnel/Shift 3 ea. vessel crew	Vessel platform	Marine Helicopter Floatplane Chart 16702-1	Human use-subsistence resources Fish-intertidal spawning, salmon (May-Sept.)	Vessel master should have local knowledge. This area includes some private property. Hazardous footing conditions on shoreline This tactic needs to be deployed at high tide. REPORT any cultural resources found during operations to FOSC Historic Properties Specialist. Surveyed, verified, deployed: SERVS June 2001
PWS SW06-03	Unnamed Bay Lat.59°44.1 N Lon. 149°56.5 W	Exclusion Exclude oil from entering the creek on the south side of Unnamed Bay.	Transport equipment by vessel (class 2/3/4). Deploy anchors and boom with vessels (class 3/4/6). Place tidal-seal boom and protected-water boom across the entrance of the creek on the south side of the bay. Tend throughout the tide.	Deployment Equipment 100 ft. protected-water boom 2 section ≥50 ft. tidal-seal boom 2 ea. anchor systems (~40 lbs.) 4 ea. anchor stakes Vessels Same as PWS-SW06-02 Personnel/Shift Same as PWS-SW06-02 Tending Vessels Same as PWS-SW06-02 Personnel/Shift Same as PWS-SW06-02	Vessel platform	Marine Chart 16702-1	Same as PWS-SW06-02	Vessel master should have local knowledge. Surveyed, verified, deployed: SERVS June 2001
PWS SW06-04	Unnamed Bay Lat. 59° 59.85 N Lon. 147° 59.08 W	Passive Recovery Minimize impact to the tidal flats and salmon stream in Unnamed Bay through the use of passive recovery of oil.	Transport equipment by vessel (class 3/4). Place and anchor snare or sorbent boom across the stream and tidal flats in Unnamed Bay. Replace as necessary to maximize the recovery. Tend at least once per tide.	Deployment Equipment 200 ft. snare or sorbent boom 4 ea. anchor stakes Vessels/Personnel/Shift Same as PWS-SW06-02 Tending Vessels/Personnel/Shift Same as PWS-SW06-02	Vessel platform	Marine Chart 16702-1	Same as PWS-SW06-02	Use snare boom for persistent oils and sorbent boom for non-persistent oils.