

# Map & Photo Legend



SE03-03 Petersburg Creek looking west.

	Free-oil Containment and Recovery, Shallow Water
	Diversion Booming
	Protected-water Boom
	Marine Recovery
	Shoreside Recovery

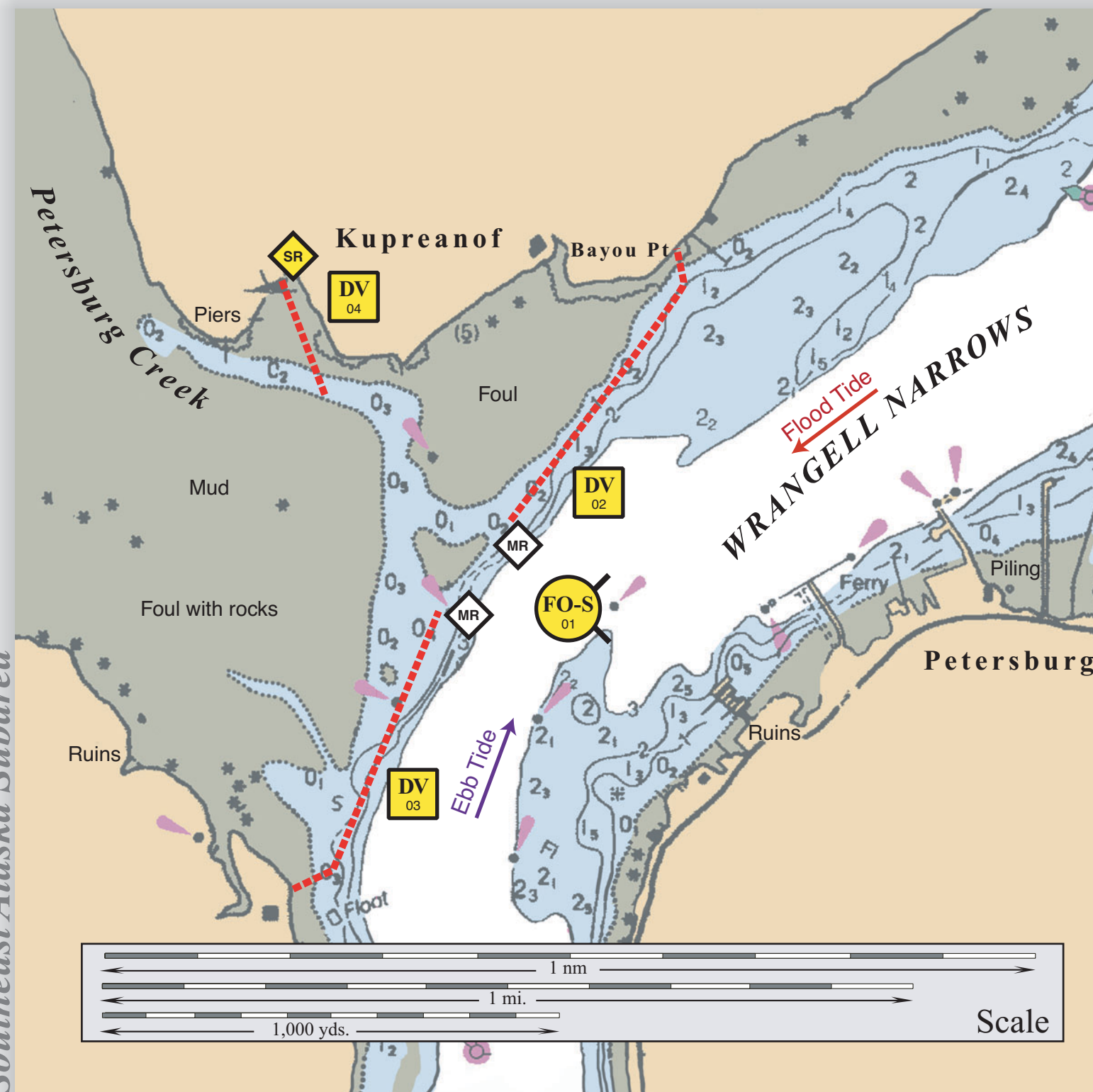


SE03-03 Petersburg Creek looking northwest.

## Petersburg Creek, SE03-03

Center of map at 50° 48.5' N Lat., 132° 59.1' W Lon.

### Geographic Response Strategies for Southeast Alaska Subarea



This is not intended for navigational use.

Soundings in fathoms

ID	Location and Description	Response Strategy	Implementation	Response Resources	Staging Area	Site Access	Resources Protected (months)	Special Considerations
SE03-03-01	<b>Petersburg Creek</b> Nearshore waters in the general area of: Lat. 56°48.4 N Lon. 132° 59.1 W	<b>Free-oil Recovery</b> Maximize free-oil recovery in the offshore & nearshore environment in the channel, outside of the mudflats.	Deploy free-oil recovery strike teams upwind and up-current of Petersburg Creek. Use aerial surveillance to locate incoming slicks.	Multiple free-oil recovery strike teams as required to maximize interception of oil before it impacts sensitive areas.	Vessel platform, or Petersburg	Via marine waters	Same as SE03-03-02	Vessel master should have local knowledge due to strong tidal currents and shoal waters.
SE03-03-02	<b>Petersburg Creek North</b> Lat. 56° 48.7 N Lon. 132° 59.1 W	<b>Divert/Recover (flood)</b> Divert oil traveling south through Wrangell Narrows during flood tide away from Petersburg Creek, to marine recovery.	Use class 3/4 vessels with deck space to transport equipment and class 6 vessels to deploy boom and set anchors. Place 1800 ft. of protected-water boom outside of and parallel to the mudflats, to divert oil traveling south to marine recovery.	<b>Deployment Equipment</b> 1800 ft. protected-water boom 20 ea. anchor systems (~40 lbs.) 1 ea. marine recovery <b>Vessels</b> 4 ea. class 3/4 2 ea. class 6 <b>Personnel/Shift</b> 16 ea. vessel crew <b>Tending Vessels</b> 3 ea. class 3/4 2 ea. class 6 <b>Personnel/Shift</b> 13 ea. vessel crew	Vessel platform, or Petersburg	Via marine waters	Fish-intertidal salmon/trout spawning (sockeye, chum, pink, steelhead, Dolly Varden, cutthroat)  Birds-waterfowl concentration (winter)  Habitat-marsh, mudflats  Human use-commercial herring fishing	Tactic SE03-03-02 is implemented during flood tide and tactic SE03-03-03 is implemented during ebb tide.  FOSC Historic Properties Specialist should INSPECT site prior to operations.  See Figure G-3-6 for equipment locations.  Tested: 5/18/02 SEAPRO  Surveyed: 5/18/03 SEAPRO, ADEC
SE03-03-03	<b>Petersburg Creek South</b> Lat. 56° 48.3 N Lon. 132° 59.4 W	<b>Divert / Recover (ebb)</b> Divert oil traveling north through Wrangell Narrows during ebb tide away from Petersburg Creek, to marine recovery.	Place 1500 ft. of protected-water boom outside of and parallel to the mudflats, to divert oil traveling north to marine recovery.	<b>Deployment Equipment</b> 1500 ft. protected-water boom 17 ea. anchor systems (~40 lbs.) 1 ea. marine recovery  <b>Vessels, Personnel, Tending</b> Same as SE03-03-02	Vessel platform, or Petersburg	Via marine waters	Same as SE03-03-02	Tested: 5/18/02 SEAPRO  Surveyed: 5/18/03 SEAPRO, ADEC
SE03-03-04	<b>Petersburg Creek Channel</b> Lat. 56° 48.8 N Lon. 132° 59.5 W	<b>Divert / Recover</b> Divert oil entering channel to Petersburg Creek to shoreside recovery.	Place 800 ft. of protected-water boom from small cove, out into the channel to divert oil entering the channel to shoreside recovery.	<b>Deployment Equipment</b> 800 ft. protected-water boom 10 ea. anchor systems (~40 lbs.) 1 ea. shoreside recovery <b>Vessels &amp; Personnel</b> Same as SE03-03-02 <b>Tending</b> Same as SE03-03-02	Vessel platform, or Petersburg	Via marine waters	Same as SE03-03-02	Tested: not yet  Surveyed: 5/18/03 SEAPRO, ADEC