



EX02a viewed from the southeast.

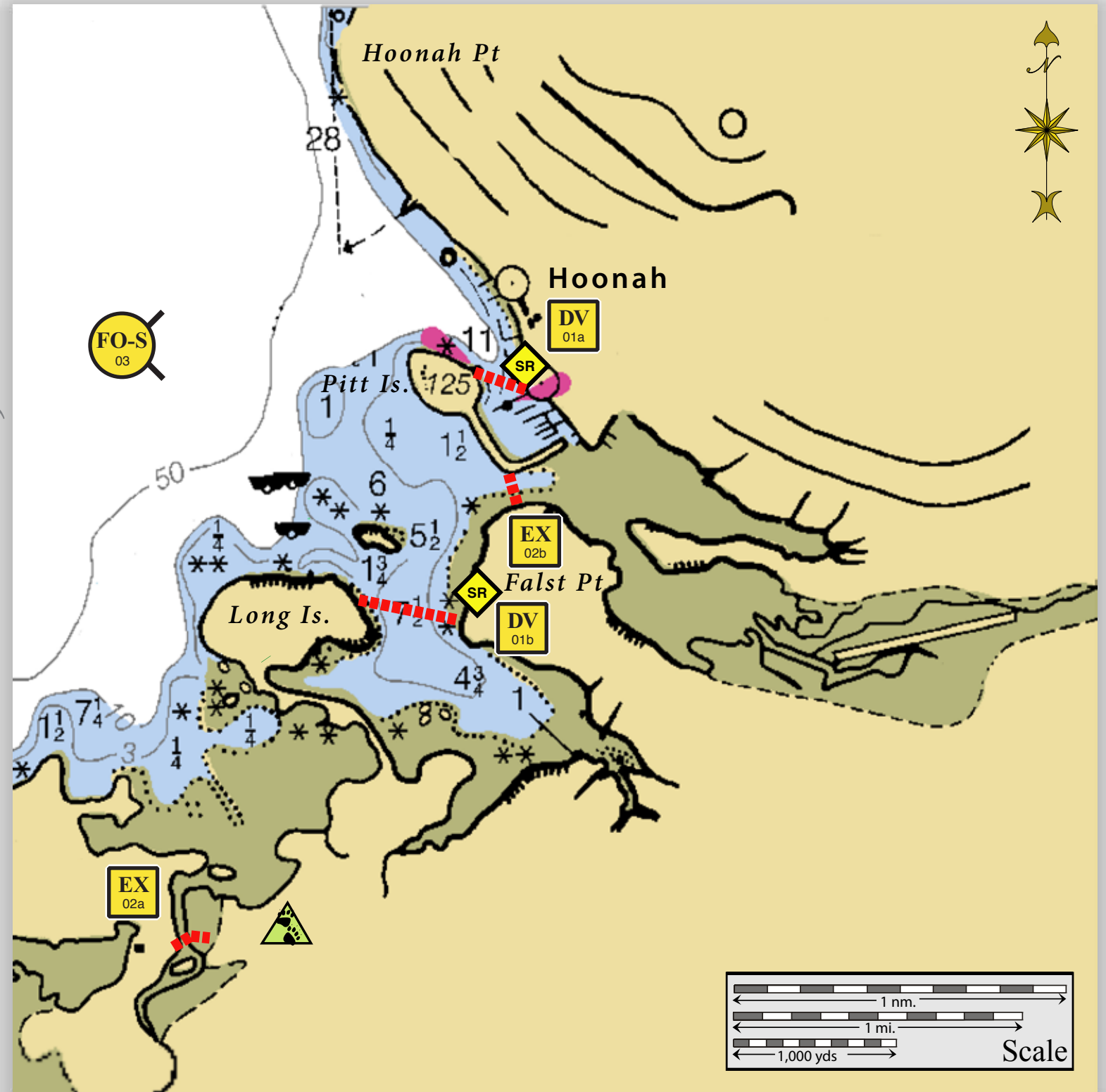


DV01a viewed from the northeast.

Geographic Response Strategies for Southeast Alaska Subarea, Zone 6

Hoonah, SE06-10

Center of map at 58° 06.24' N Lat., 135° 27.62' W Lon.



This is not intended for navigational use.

Map
Legend

- Free-oil Recovery
- Diversion Booming
- Exclusion Booming
- Protected-water Boom
- Shoreside Recovery
- Bears in Area, Guards Recommended

ID	Location and Description	Response Strategy	Implementation	Response Resources	Staging Area	Site Access	Resources Protected	Special Considerations
SE06-10-01 DV	Hoonah a. Lat. 58° 06.31'N Lon. 135°26.60'W b. Lat. 58° 05.51'N Lon. 135°27.09'W	Divert and Collect Divert oil to shore-side collection points determined by spill source and trajectory.	Deploy anchors and boom with skiffs (class 6). For (a) place protected-water boom at proper angle from the shoreline to the harbor island, for (b) place boom from Long Is. to False Pt. and divert incoming oil to the collection site. Set-up collection site using shore-side collection units or if oil volume is minimal, use sorbent boom or snare line to provide collection of oil. Tend throughout the tide. <u>Boom Lengths:</u> a. 700 ft. b. 1550 ft.	Deployment Equipment 2250 ft. protected-water boom 11 ea. anchor systems 8 ea. anchor stakes 2 ea. shore-side collection units Vessels 3 ea. class 6 Personnel/Shift 6 ea. vessel crew 2 ea. response techs Tending Vessels 2 ea. class 6 Personnel/Shift 3 ea. vessel crew 1 ea. response tech	Hoonah Harbor	Site is accessible via the road system. Via marine waters Chart 17302	Fish: coho, chum, pink, dolly varden Birds: waterfowl concentration Habitat: gravel beach, marsh, sheltered rocky shore, exposed tidal flats Human Use: commercial fishing, subsistence, high recreational use	Vessel master should have local knowledge. Bears are present in the area. Bear guards required. Consult with Incident Command to ensure ADFG-Title 16 and ADNR-Title 41 permits have been obtained. Consult the Site Selection Matrix for cultural resources designation. Consult the ADEC "Spill Tactics for Alaska Responders" manual for additional information on the deployment of these tactics. Site surveyed: not surveyed Tested: not yet
SE06-10-02 EX	Hoonah a. Lat. 58° 05.03'N Lon. 135°28.31'W b. Lat. 58°06.19'N Lon. 135°26.84'W	Exclusion Exclude oil from entering the Hoonah area. Aerial survey prior to deployment.	Deploy anchors and boom with skiffs (class 6). Place protected-water boom in a chevron pattern in front of the entrance to designated creeks/rivers. Tend throughout the tide. <u>Boom Lengths:</u> a. 400 ft. b. 550 ft.	Deployment Equipment 950 ft. protected-water boom 5 ea. anchor systems 8 ea. anchor stakes Vessels/Personnel/Shift Same as SE06-10-01 Tending Vessels/Personnel/Shift Same as SE06-10-01	Hoonah	Site is accessible via the road system. Via marine waters Chart 17302	Same as SE06-10-01	Vessel master should have local knowledge.
SE06-10-03 FO-S	Hoonah Nearshore waters in the general area of: Lat. 58° 06.34'N Lon. 135°28.26'W	Free-oil Recovery Maximize free-oil recovery in the offshore & nearshore environment Hoonah depending on spill location and trajectory.	Deploy free-oil recovery strike teams upwind and up current of Hoonah. Use aerial surveillance to locate incoming slicks.	Deploy multiple free-oil recovery strike teams as required to maximize interception of oil before it impacts sensitive areas.	Hoonah	Via marine waters Chart 17302	Same as SE06-10-01	Vessel master should have local knowledge. Use extreme caution, shoal waters with numerous reefs and rocks, shallow mud flats and channels.

NOTE: Sensitive resource information can be found on other maps which can be accessed through the sensitive area section of the SE AK Sub-Area Contingency Plan: http://www.dec.state.ak.us/spar/perp/plans/scp_se.htm.