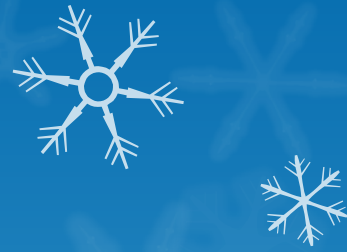


Native Village of Tazlina

Copper Valley School

Rick Young, Tribal Administrator

Tana Mae Pete, Tribal Response Program Coordinator



The area around Tazlina reportedly was a fishing camp of Ahtna Indian tribes who historically moved up and down the Copper River and its tributaries. Tezlende is Athabascan for swift water. By 1900, two permanent villages had been established on the north and south banks of the Tazlina River near its confluence with the Copper River, where the villages sang back and forth to each other during potlatches over the long winter months and short summer months.

The community of Tazlina developed around the old Copper Valley School, built by the Catholic Church in 1954 to board students from all over the state. The school closed in 1971, when local high schools were constructed in the remote areas of the state and boarding schools were discontinued.



History

Community Concerns

Residential housing exists near the site and the school is easily accessible by the community. Children regularly use the site as a play area, although the location is presumed to be hazardous because of asbestos and maybe other contaminants.



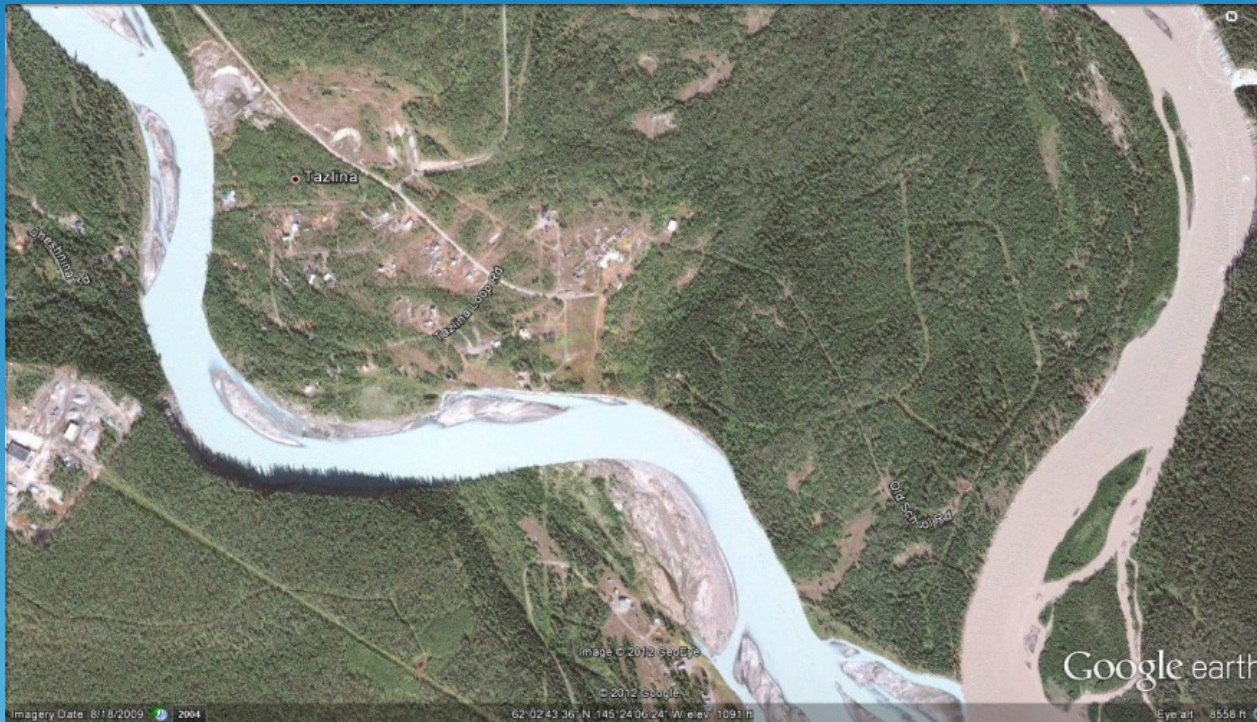
Community Concerns



The site is physically dangerous, due to the presence of building debris from a fire in 1976 and the dilapidated conditions of the structures that survived the fire. The community is concerned that uncontrolled access to the site may lead to the possibility of acute or chronic illness/injury without an understanding of potential environmental contaminants and hazards. A road passes through the area to access fishing areas used by local Natives.

Community Concerns

Contaminates Leaching into Tazlina and Copper Rivers



Two rivers the Copper River and the Tazlina River meet near the old school site. The Copper River is where local people use fish wheels to get their supply of fish for the winter.

Community Concerns

Asbestos



Community Concerns

Lead Based Paint



These cans of white powder are suspicious of being lead based paint and sits in a wooded area of the school where children play and cars drive by everyday.

Community Concerns

Boxes of White powder



Boxes of white powder in a wooded area of the school. No one is sure what the powder substance is but people concerned that it could be hazardous.

Community Concerns

Underground Storage tanks



Community Concerns

Septic and waste Systems



Community Concerns Buried Dumpsites



Community Concerns

Open Dump Sites



Testing Through Brownfield Grant



Proposed Community Development and Land Reuse

