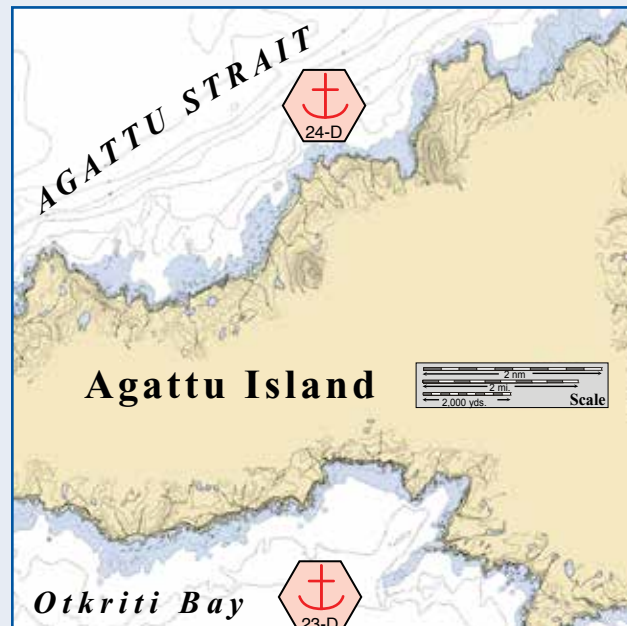
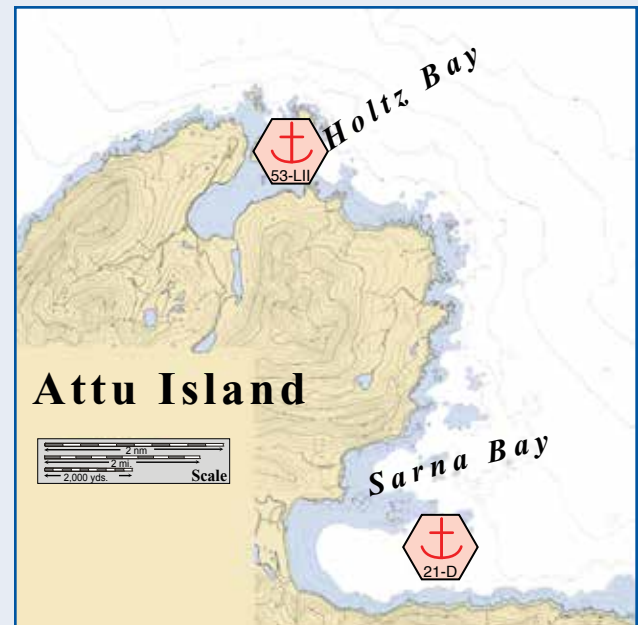


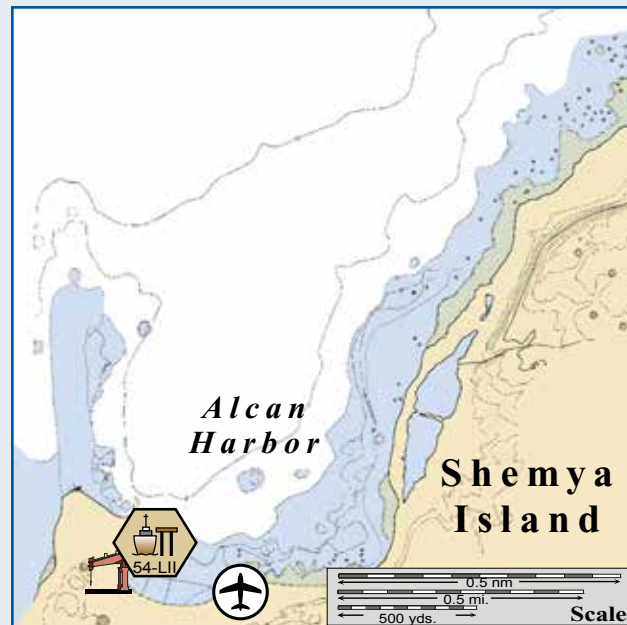
Abraham Bay.



Agattu Island.

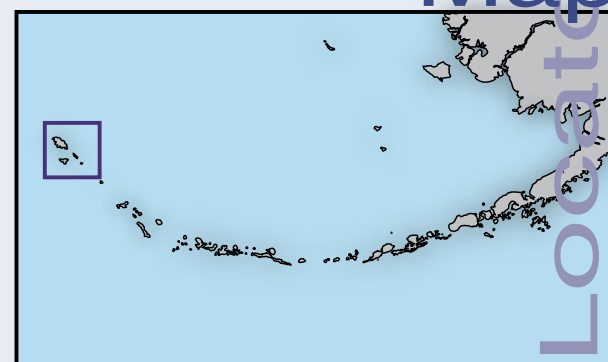


Holtz Bay and Sarna Bay.



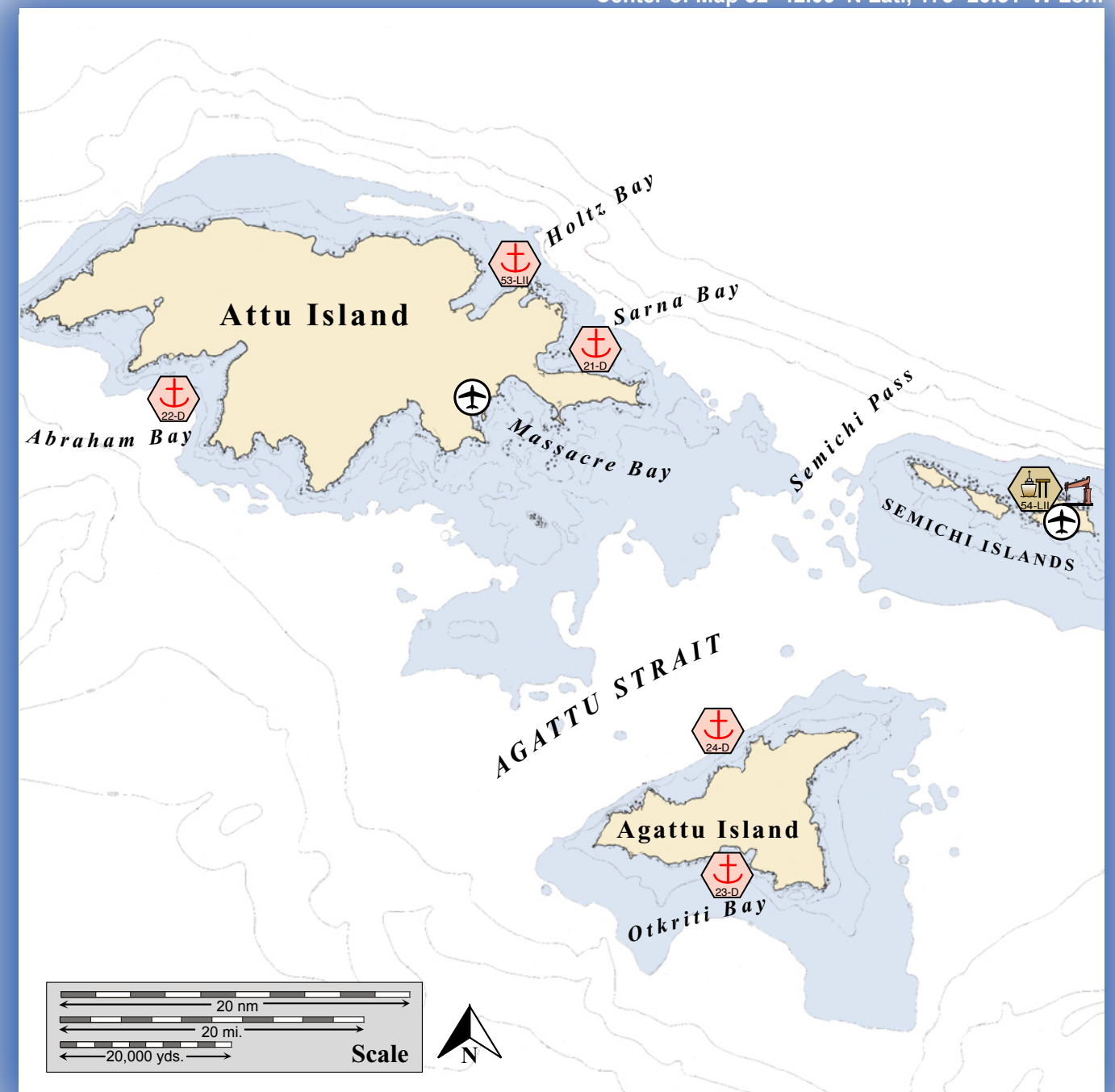
Shemya Island.

Aleutian Subarea



Map
Locator

Center of Map 52° 42.09' N Lat., 173° 20.51' W Lon.



This is not intended for navigational use.

Soundings in fathoms

	Anchorage		Existing GRS
	Mooring		Fish Hatchery
	Dock/pier		Private Cabins
	Crane		Public Use Cabins
	Airport		Boat Harbor

Map
Legend

Aleutian PPOR Map 09

Site Considerations for PPOR Map 09 of the Aleutian Subarea							Site ID Number and Vessel Class Classification
	Sarna Bay-Attu Island	Abraham Bay-Attu Island	Otkriti Bay-Agattu Island	Binnacle Bay-Agattu Island	Holtz Bay-Attu Island	Alcan Harbor-Shemya Island	
ID Number	21-D	22-D	23-D	24-D	53-L II	54-L II	D = A deep draft vessel that exceeds 20,000 Gross Tons, has drafts of 25-60 ft. and ranges from 450 ft.-1000 ft. LOA, typical of Tankers/ Cruiseships
Human Health & Safety							
Communities – distances-nm	Attu USCG Station- 16	Attu USCG Station- 25	Attu USCG Station- 38	Attu USCG Station- 24	Attu USCG Station- 23	Attu USCG Station- 33	LII= A light draft vessel of 10,000 to 19,999 Gross Tons, has drafts up to 25 ft., LOA up to 450 ft., typical of Ferrys/ Trampers
Natural Resource Considerations							
Fish & Wildlife	Spawning salmon, Steller's sea lions, seals, sea otters, waterfowl concentrations, seabird nesting					Steller's sea lions, seals, sea otters, waterfowl concentrations, seabird nesting	
Threatened & Endangered Species	Steller's sea lions, sea otters and short-tailed albatross are present throughout						LI= A light draft vessel of 300 to 9,999 Gross Tons, has drafts up to 25 ft., LOA up to 450 ft., typical of Ferrys/ Trampers
Sensitive Areas	Not Designated		Designated as a Most Environmentally Sensitive Area (MESA33-ADF&G)		Not Designated		
Invasive Species-Rats	Rats are present		These areas are rat-free		Rats are present		S = A shallow draft vessel less than 300 Gross Tons, has a draft less than 15 ft., LOA less than 200 ft., typical of Excursion/Fishing vessels
Other Stakeholder Considerations							
Fisheries	Groundfish						
Historic Properties	If suspected cultural artifacts are encountered, notify the State Historic Preservation Office and the land managers. Review adjacent GRS (if applicable) for information on historic properties.						
Mariculture	None						
Subsistence	None						
Tourism/Recreation	Occasional Tourism						
Waterfront Public Facilities/Parks	Alaska Maritime National Wildlife Refuge-no facilities immediately available						
Waterfront Private Facilities	USCG operates a station at Attu Island- No waterfront facilities available	None		USCG operates a station at Attu Island- No waterfront facilities available	A crane may be available		
Response and Salvage Resource Considerations							
Ability to Boom Vessel	Weather dependent	No			Weather dependent		
Emergency Tow System	An emergency tow system is available to assist disabled vessels in Unalaska and Aleutian Subarea. Contact the USCG MSD-Unalaska-907.581.3466 and the Unalaska Harbor Master 907.581.1254 for additional information.						
Geographic Response Strategies	None						
Closest Alternative Places of Refuge (same sized vessel)	26 nm. to 24-D Binnacle Bay	39 nm. to 24-D Binnacle Bay	22 nm. to 24-D Binnacle Bay	22 nm. to 23-D Otkriti Bay	34 nm. to 54-L II Alcan Harbor	34 nm. to 53-L II Holtz Bay	

Stakeholders for PPOR Map 09 of the Aleutian Subarea		Physical and Operational Characteristics for PPOR Map 09 of the Aleutian Subarea						
Year-2007	Contact	Sarna Bay-Attu Island	Abraham Bay-Attu Island	Otkriti Bay-Agattu Island	Binnacle Bay-Agattu Island	Holtz Bay-Attu Island	Alcan Harbor-Shemya Island	
		ID Number	21-D	22-D	23-D	24-D	53-LII	54-LII
Aleut Corporation	President	Location	52°52.84'N 173°21.19'E	52°50.55'N 172°40.89'E	52°21.67'N 173°33.88'E	52°30.11'N 173°33.04'E	52°57.36'N 173°12.38'E	52°44.05'N 174°04.36'E
Alaska Dept of Fish & Game	Resource Manager	Maximum Vessel Size	Deep draft, greater than 20,000 Gross Tons				Light draft-II, 10,000 to 19,999 Gross Tons	
Alaska Department of Natural Resources	Natural Resource Manager	Type of Berthing	Anchorage					Dock
Alaska Maritime National Wildlife Refuge	Dept of the Interior-Regional Environmental Officer	Contact	N/A					USAF-Anchorage- 907.552.5160
Aleut Marine Mammal Commission	Director	Navigational Approach	Approach from N, E	Approach from S	Approach from S	Approach from the N, W	Approach from the N, E	Approach from the NW
Native Allotments	Dept of the Interior-Regional Environmental Officer	Minimum Water Depth	20 Fathoms in swing area	28 Fathoms in swing area	60 Feet in the swing area	20 Fathoms in the swing area	20 Fathoms in swing area	30 Feet at the dock face
		Maximum Water Depth	34 Fathoms in swing area	53 Fathoms in swing area	40 Fathoms in the swing area	60 Fathoms in the swing area	37 Fathoms in swing area	30 Feet at the dock face
		Maximum Vessel Draft	60 ft.		60 ft.	60 ft.	35 ft.	25 ft.
		Swing Room/Dock Face	6000 ft.	4800 ft.	3600 ft.	3000 ft.	6000 ft.	250 ft.
		Bottom Type	Sand, Hard	Rocky, Gravel	Sand, Shells	Rocky	Sand	N/A
		Docks/Piers	Nearest Alt. Dock 06-D Dutch Harbor APL Dock				Nearest Alt. Dock 54-LII Adak Berthing Pier #3	
		Moorings	Nearest Mooring - Wide Bay 06-D					
		Anchorage	Nearest Alt. Anchorage-25-D Binnacle Bay		Nearest Alt. Anchorage- 24-D Otkriti Bay	Nearest Alt. Anchorage-56-LII Alcan Harbor	Nearest Alt. Anchorage-55-LII Holtz Bay	
		Prevailing Winds	Summer-southwest through northwest winds are common. Winter- winds occur from all directions.					
		Currents	Local currents in the passes are strong and complex. Currents are generally weak outside of the passes.					
		Tides	Mean High Water- 3.2 (Higher- 3.6), Mean Low Water- 1.2 (Lower- -3.0) Tide is chiefly diurnal	Mean High Water- ----(Higher- 3.7), Mean Low Water- 0.0(Lower- -3.0) Tide is chiefly diurnal	Mean High Water----(Higher- 3.4) , Mean Low Water- 1.1 (Lower- -3.0) Tide is chiefly diurnal		Mean High Water- ----(Higher- 3.7), Mean Low Water- ----(Lower- -3.0) Tide is chiefly diurnal	Mean High Water-3.1 (Higher- 3.4) , Mean Low Water- 0.0 (Lower- -3.5) Tide is chiefly diurnal
		Sea Conditions	Exposed to seas from the N-E	Exposed to seas from the S-W	Exposed to seas from the SE-W	Exposed to seas from the SW-NE	Exposed to seas from the N-E	Exposed to seas from the N-E
		Shelter from Severe Storms	Sheltered SE-NW	Sheltered NW-E	Sheltered NW-E	Sheltered E-S	Sheltered SE-NW	Sheltered NW-NE
		Fog	Fog is frequent and severe in all seasons.					
		Sea ice	Sea ice unlikely.					

NOTE: Sensitive resource information can be found on other maps which can be accessed through the sensitive area section of the Aleutian Subarea Contingency Plan: <http://www.akrrt.org/AIPlan/aitoc.shtml>