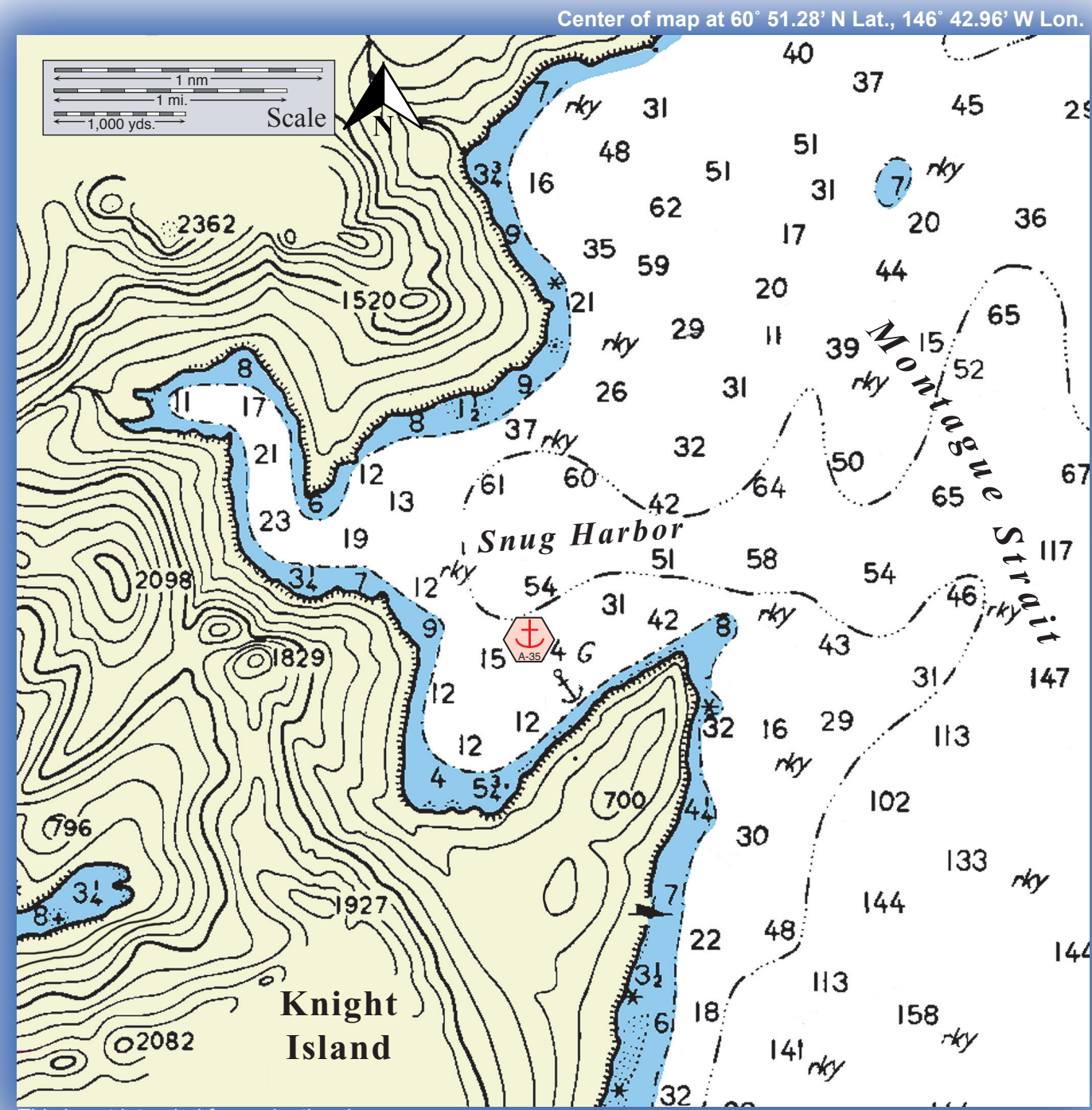


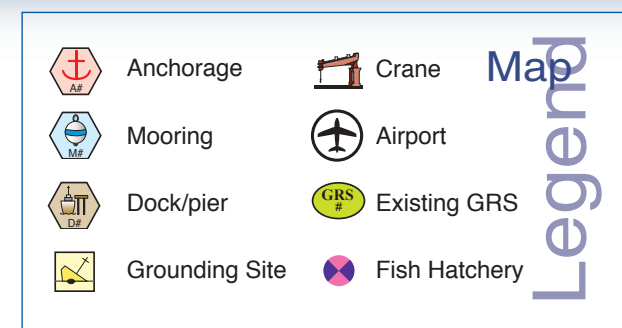
Places of Refuge



Snug Harbor looking southwest.



This is not intended for navigational use.



PWS PPOR Map 10

Potential Places of Refuge for Prince William Sound Subarea

PPOR-10 Snug Harbor Physical and Operational Characteristics	
	<i>A35 Snug Harbor Anchorage</i>
Maximum Vessel Size	Light draft, up to 20,000 Gross Tons
Contact	N/A
Navigational Approach	Approach from the E.
Minimum Water Depths	12 Fathoms in the swing room
Maximum Water Depths	15 Fathoms in the swing room
Maximum Vessel Draft	55 ft.
Swing Room/Dock Face	2000 ft.
Bottom Type	Gravel
Docks/Piers	Nearest-D34 Chenega Ferry Dock- 20 nm.
Moorings	Nearest- M39 Outside Bay- 25 nm.
Anchorage	60° 14.77N 147° 43.30W
Firefighting Anchorages	A35 Snug Harbor is an identified MFF anchorage
Grounding Sites	Nearest identified-G64 Constantine Harbor- 34 nm.
Prevailing Winds	NE. (Oct-April), SW. (May-Sept.)
Currents	Negligible
Tides	Mean High Water 10.8(Higher 11.7) , Mean Low Water 1.5 (Lower -4.0) at Port Chalmers
Sea Conditions	Possible swell from the E.
Shelter from Severe Storms	Exposed to storms from the E.
Fog	Fog is possible during all seasons
Ice	None

PPOR-10 Snug Harbor Stakeholders	
	<i>Contact</i>
U.S. Department of Agriculture, National Forest Service	CNF EVOS Liaison/ Subsistence Coordinator
Department of the Interior	Regional Environmental Officer
National Marine Fisheries Service/ NOAA	Protected Resources Biologist
Alaska Department of Fish & Game	Habitat Biologist
Prince William Sound Regional Citizens Advisory Council	Executive Director
For Native Allotments, contact the Department of the Interior	Regional Environmental Assistant
For private landowners, contact the Alaska State Lands, Valdez Records Office	District Recorder

NOTE: Additional contact information is included in Part One of the SCP Prince William Sound Subarea Contingency Plan.

PPOR-10 Snug Harbor Site Considerations	
	<i>A-35 Snug Harbor Anchorage</i>
Human Health and Safety Considerations	
Communities – distances/population	Chenega Bay - 21nm./pop. 35
Natural Resources Considerations	
Fish and Wildlife	Bald Eagle nests, spawning salmon, seabird colonies
Threatened & Endangered Species	None noted
Sensitive Areas	No high priority sites in Snug Harbor
Other Stakeholder Considerations	
Fisheries	Purse seine - salmon
Mariculture	None
Subsistence	None noted
Historic Properties	If suspected cultural artifacts are encountered, notify the State Historic Preservation Office and the land managers. Review adjacent GRS (if applicable) for information on historic properties.
Tourism/Recreation	Recreational Site, Anchorage
Waterfront Public Facilities/Parks	None
Waterfront Private Facilities	None
Response and Salvage Resources Considerations	
Can Vessel be Boomed?	Yes
Geographic Response Strategies	None

NOTE: Sensitive resource information can be found on other maps which can be accessed through the sensitive area section of the PWS Sub-Area Contingency Plan: <http://www.akrrt.org/PWSplan/PWStoc.shtml>.