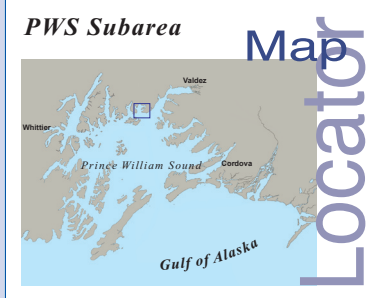


# Places of Refuge

Map

Locator

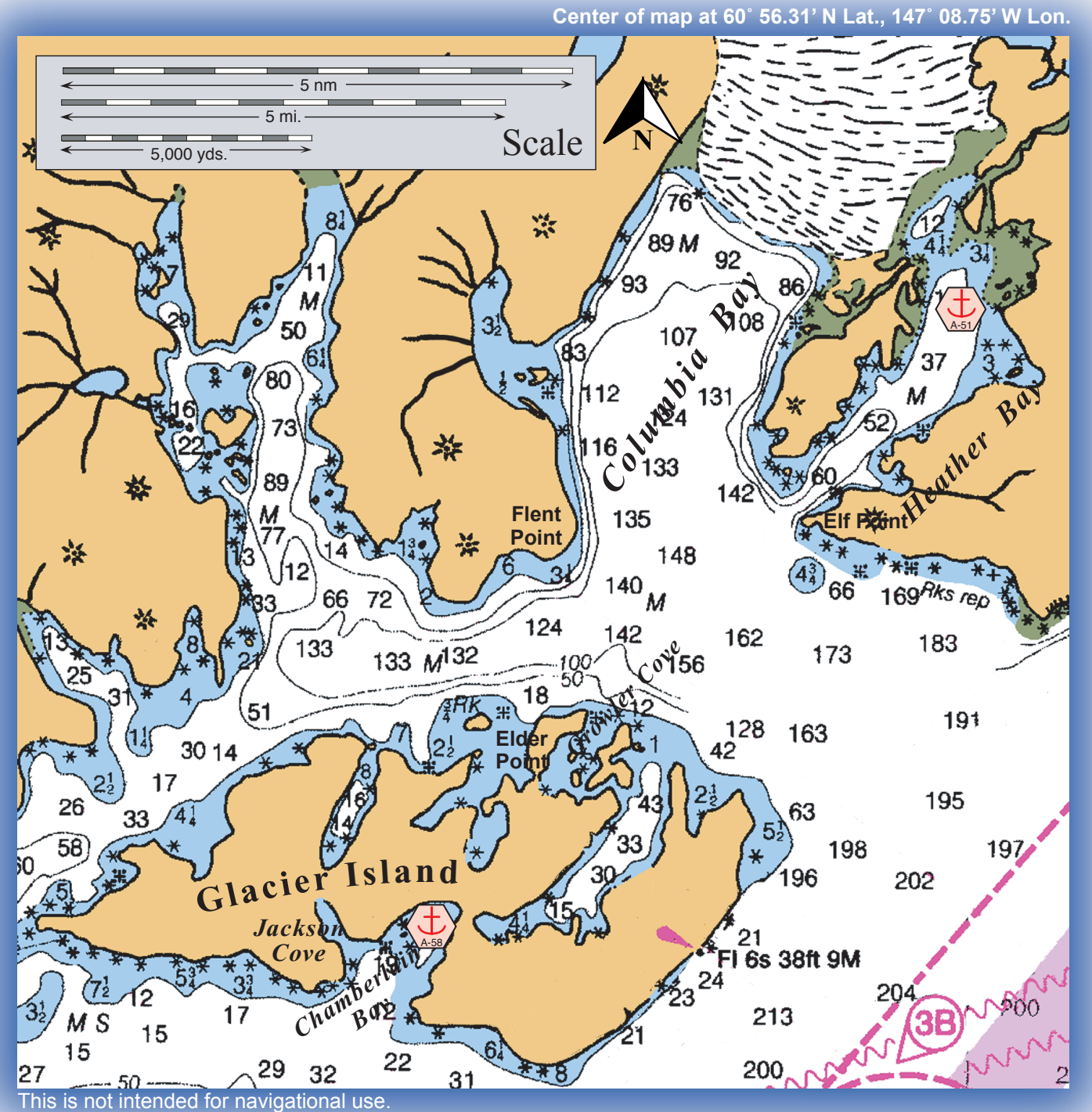


Looking southwest towards Heather Island.

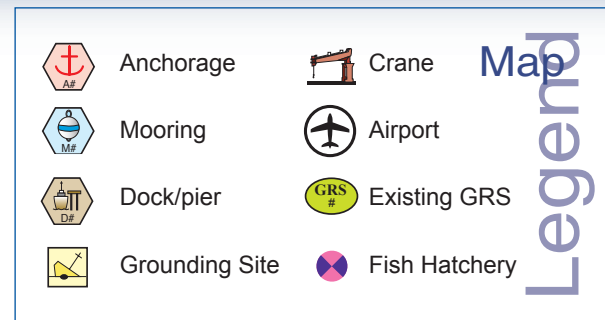


Looking southwest towards Glacier Island.

## Potential Places of Refuge for Prince William Sound Subarea



This is not intended for navigational use.



## PWS PPOR

### Map 15



PPOR-15 Heather Bay and Growler Island Physical and Operational Characteristics	
	A51 Heather Bay Anchorage
Maximum Vessel Size	Light draft, up to 20,000 Gross Tons
Contact	N/A
Navigational Approach	Approach from the S.
Minimum Water Depths	13 Fathoms in the swing area
Maximum Water Depths	25 Fathoms in the swing area
Maximum Vessel Draft	70 ft.
Swing Room/Dock Face	1650 ft.
Bottom Type	Mud
Docks/Piers	Nearest-D52 Growler Island Dock- 11 nm.
Moorings	Nearest- M12 SERVS Buoys Port Valdez-29nm.
Anchorage	60° 59.02N 147° 00.15W
Firefighting Anchorages	A51 Heather Bay is an identified MFF anchorage
Grounding Sites	Nearest Identified-G59 North Jack Bay- 20 nm.
Prevailing Winds	NE. (Oct-April), SW .(May-Sept.). Extreme winds are possible from the N.
Currents	Negligible
Tides	Mean High Water- 11.1 (Higher- 12.1) , Mean Low Water 1.5 (Lower -5.0)
Sea Conditions	Sheltered from extreme sea conditions
Shelter from Severe Storms	Sheltered from extreme stroms
Fog	Fog can occur during all seasons.
Ice	All of Columbia Bay can have significant ice from the Columbia Glacier.

PPOR-15 Heather Bay and Growler Island Stakeholders	
	Contact
U.S. Department of Agriculture, US Forest Service	CNF EVOS Liaison/ Subsistence Coordinator
Department of the Interior	Regional Environmental Officer
National Marine Fisheries Service/ NOAA	Protected Resources Biologist
State of Alaska Department of Natural Resources	Natural Resource Manager
Alaska Department of Fish & Game	Habitat Biologist
Exxon Valdez Oil Spill Trustee Council	Executive Director
Prince William Sound Regional Citizens Advisory Council	Executive Director
For Native allotments, contact the Department of the Interior	Regional Environmental Assistant
For private landowners, contact the Alaska State Lands, Valdez Records Office	District Recorder

NOTE: Additional contact information is included in Part One of the SCP Prince William Sound Subarea Contingency Plan.

PPOR-15 Heather Bay and Growler Island Site Considerations	
	A-51 Heather Bay Anchorage
Human Health and Safety Considerations	
Communities – distances/population	Tatitlek: 16nm/pop. 110; Valdez: 34nm/pop. 4155
Natural Resources Considerations	
Fish and Wildlife	Bald eagle nest sites, high waterfowl concentrations, salmon streams, harbor seals
Threatened & Endangered Species	None noted
Sensitive Areas	No high priority sites
Other Stakeholder Considerations	
Fisheries	Purse seine: salmon
Mariculture	None noted
Subsistence	None noted
Historic Properties	If suspected cultural artifacts are encountered, notify the State Historic Preservation Office and the land managers. Review adjacent GRS (if applicable) for information on historic properties.
Tourism/Recreation	Area used mainly for anchorage
Waterfront Public Facilities/Parks	EVOS Conservation Easement
Waterfront Private Facilities	None
Response and Salvage Resources Considerations	
Can Vessel Be Boomed?	Yes
Geographic Response Strategies	None
Closest Alternative Place of Refuge	PPOR-15 D-52 Growler Island Dock: 6nm

NOTE: Sensitive resource information can be found on other maps which can be accessed through the sensitive area section of the PWS Sub-Area Contingency Plan: <http://www.akrrt.org/PWSplan/PWStoc.shtml>.