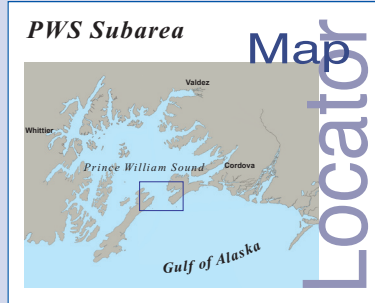


Places of Refuge

Locator Map

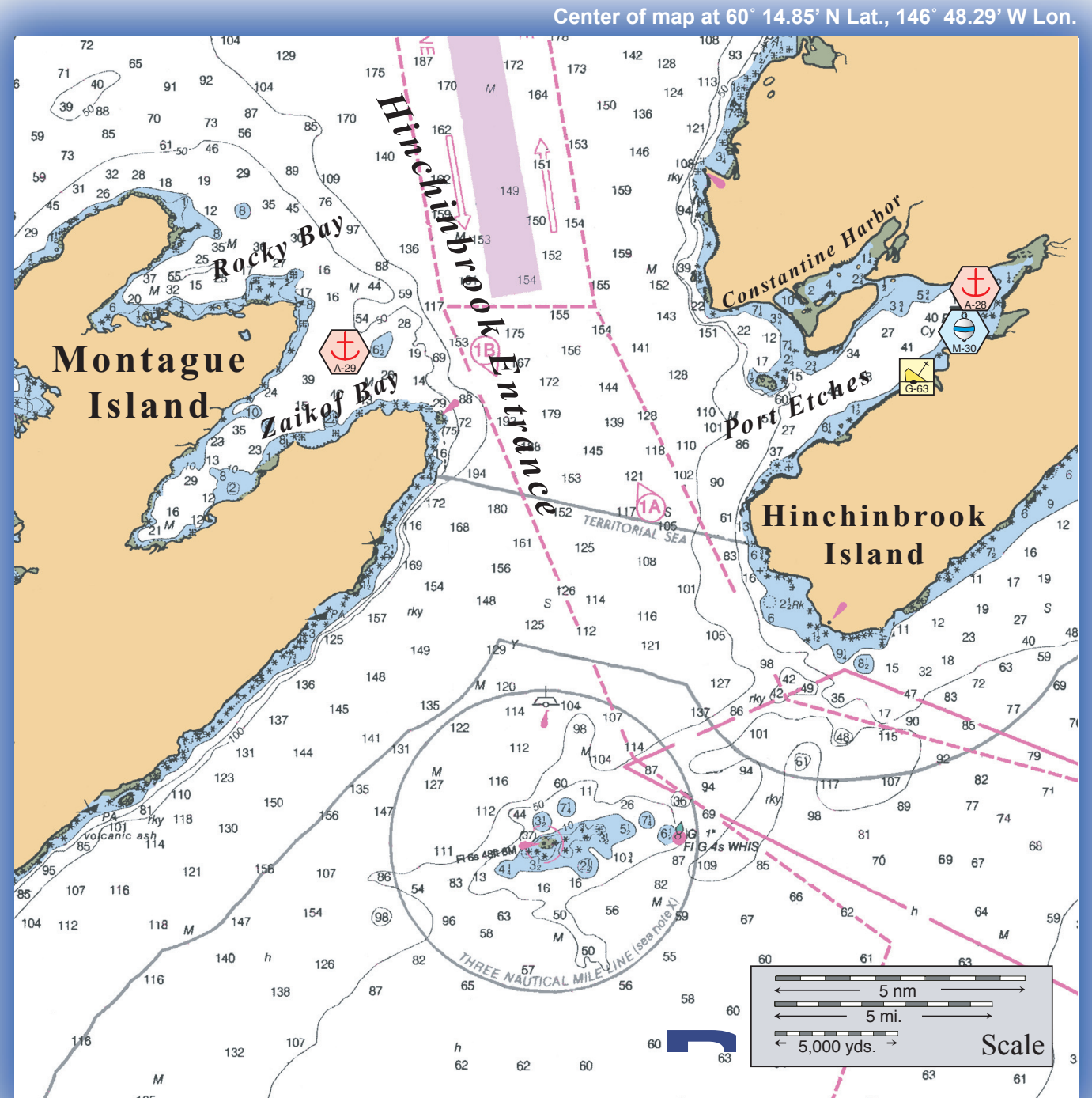


Port Etches looking east.

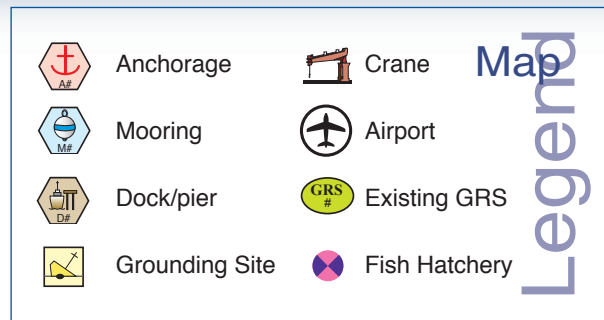


Zaikof Bay looking southwest.

Potential Places of Refuge for Prince William Sound Subarea



This is not intended for navigational use.



PWS PPOR Map 07

PPOR-07 Port Etches and Zaikof Bay Physical and Operational Characteristics			
	A28 Port Etches Anchorage	M30 Port Etches Mooring	A29 Zaikof Bay Anchorage
Maximum Vessel Size	Deep draft, greater than 20,000 Gross Tons		
Contact	N/A	SERVS Manager 907-834-6620	N/A
Navigational Approach	Approach from SW. via the Vessel Traffic System		Approach from E. via the Vessel Traffic System
Minimum Water Depths	11 Fathoms in swing area		14 Fathoms in swing area
Maximum Water Depths	32 Fathoms in swing area		54 Fathoms in swing area
Maximum Vessel Draft	50 ft.		65 ft.
Swing Room/Dock Face	2300 ft.		5000 ft.
Docks/Piers	Nearest-D25 Cordova Docks-46 nm.		
Moorings	Nearest- M30-Port Etches SERVS Mooring	60° 20.39N 146° 33.20W	Nearest- M30-Port Etches SERVS Mooring
Anchorage	60° 20.59N 146° 33.84W	Nearest-A29 Zaikof Bay-12 nm	60° 19.42N 146° 57.98W
Firefighting Anchorage	A28 Port Etches is an identified MFF anchorage		A29 Zaikof Bay is an identified MFF anchorage
Grounding Sites	G-63 Port Etches		Nearest identified-G64 Constantine Harbor 9nm.
Bottom Type	Clay	N/A	Mud
Prevailing Winds	NE. (Oct.-April), SW. (May-Sept.)		
Currents	Negligible		
Tides	Mean High 10.3 ft.(Higher 11.2), Mean Low 1.3 ft. (Lower -4.0)		
Sea Conditions	Possible swell from the southwest		Possible swell from the east
Shelter from Severe Storms	Port Etches is exposed to severe storms, especially storms with easterly winds.		Zaikof Bay is exposed to storms from the east and southeast.
Fog	Fog can occur during all seasons.		
Ice	None		

PPOR-07 Port Etches and Zaikof Bay Area Stakeholders	
	Contact
U.S. Department of Agriculture, US Forest Service	CNF EVOS Liaison/ Subsistence Coordinator
Department of the Interior	Regional Environmental Officer
National Marine Fisheries Service/ NOAA	Protected Resources Biologist
State of Alaska Department of Natural Resources	Natural Resource Manager
Alaska Department of Fish & Game	Habitat Biologist
Chenega IRA Council	Environmental Department
Native Village of Eyak	President
Native Village of Tatitlek	President
Prince William Sound Regional Citizens Advisory Council	Executive Director
Chugach Alaska Corporation	Vice President Land & Resources
For Native allotments, contact the Department of the Interior	Regional Environmental Assistant
For private landowners west of Hinchinbrook Entrance, contact the Alaska State Lands, Valdez Records Office	District Recorder
For private landowners east of Hinchinbrook Entrance, contact the Alaska State Lands, Cordova Records Office	District Recorder

NOTE: Additional contact information is included in Part One of the SCP Prince William Sound Subarea Contingency Plan.

PPOR-07 Port Etches and Zaikof Bay Area Site Considerations			
	A-28 Port Etches Anchorage	A-29 Zaikof Bay Anchorage	M-30 Port Etches Mooring
Human Health and Safety Considerations			
Communities – distances/population	Chenega Bay-63nm./pop. 35 Cordova 55nm/pop. 2571	Chenega Bay-43nm./pop. 35 Cordova 53nm/pop. 2571	Chenega Bay-63nm./pop. 35 Cordova 55nm/pop. 2571
Natural Resources Considerations			
Fish and Wildlife	Bald eagle nests, spawning salmon, seabird colonies, waterfowl concentrations, harbor seal, sea otter concentration, spawning herring		
Threatened & Endangered Species	None noted		
Sensitive Areas	Constantine Harbor, Nuchek Creek	Zaikof Bay	Constantine Harbor, Nuchek Creek
Other Stakeholder Considerations			
Fisheries	Purse seine - Salmon, Herring		
Mariculture	None		
Subsistence	Terrestrial mammal harvest activities		
Historic Properties	If suspected cultural artifacts are encountered, notify the State Historic Preservation Office and the land managers. Review adjacent GRS (if applicable) for information on historic properties.		
Tourism/Recreation	Some recreational use- primarily anchorages		
Waterfront Public Facilities/Parks	None		
Waterfront Private Facilities	Private cabins	None	Private cabins
Response and Salvage Resources Considerations			
Can Vessel be Boomed?	May be difficult during winter months due to high winds		
Geographic Response Strategies	PWS-SE01, PWS-SE02	PWS-SE03	PWS-SE01, PWS-SE02
Closest Alternative Place of Refuge	PPOR-07 A-29 Zaikof Bay Anchorage: 14nm	PPOR-07 A-28 Port Etches Anchorage: 14nm	PPOR-07 A-29 Zaikof Bay Anchorage: 14nm

NOTE: Sensitive resource information can be found on other maps which can be accessed through the sensitive area section of the PWS Sub-Area Contingency Plan: <http://www.akrrt.org/PWSplan/PWStoc.shtml>.