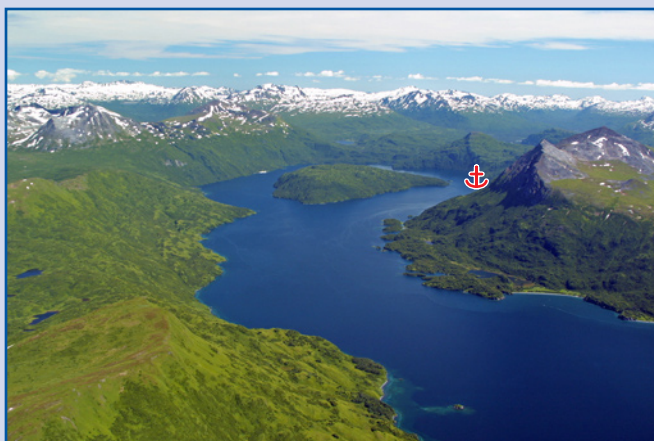


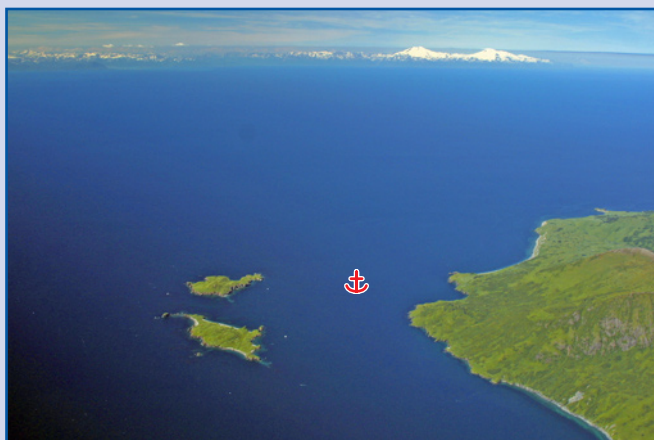
# Potential Places of Refuge for Kodiak Island Subarea



29-D Uganik Bay from the Northwest.



29-D Uganik Bay from the North.



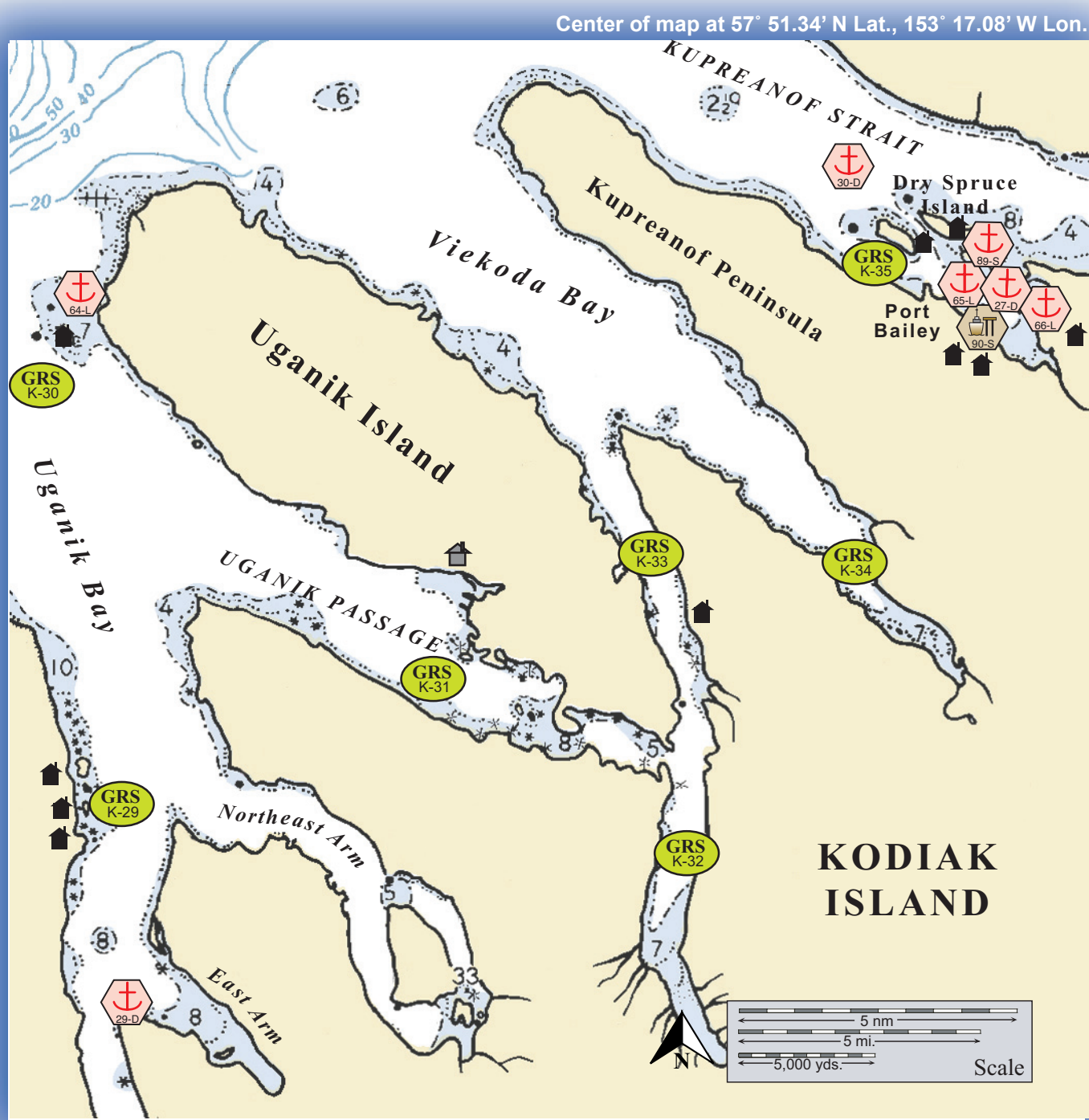
64-L Noisy Island anchorage from the South.



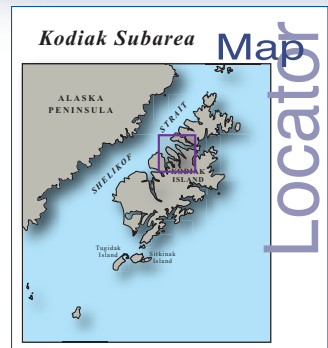
89-90-S & 65-66-L Dry Spruce Island and Port Bailey from the Northwest.



Kupreanof Strait, Dry Spruce Island from the West Northwest.



This is not intended for navigational use. Soundings in fathoms



	Anchorage		Existing GRS
	Mooring		Fish Hatchery
	Dock/pier		Private Cabins
	Crane		Public Use Cabins
	Airport		Boat Harbor

## Kodiak PPOR Map 08

USGS 1:250K Quadrangle Map Reference - Kodiak



Kodiak PPOR 08 Site Considerations – Uganik Bay to Kupreanof Strait Area							
Name	Uganik Bay	Bare Island-Kupreanof Strait	Noisy Island	Dry Spruce Bay 1	Dry Spruce Bay 2	Dry Spruce Island	Port Bailey Cannery Dock
ID Number (See Key Below)	29-D	30-D	64-L	65-L	66-L	89-S	90-S
Human Health & Safety							
Communities – distances-nm	Larsen Bay-40, Karluk-46,Port Lions-46, Kodiak-71, Homer-70	Port Lions-15, Ouzinke-30, Kodiak-40	Larsen Bay-33, Karluk-36,Port Lions-32, Kodiak-49	Port Lions-15, Ouzinke-30, Kodiak-40			
Natural Resource Considerations							
Wildlife	Salmon & herring spawning, sea lions, seals,otters,seabird & eagle nesting,waterfowl concentrations, whales feeding and migrating	Herring spawning, seals, otters,seabird & eagle nesting, waterfowl concentrations, whales feeding and migrating	Salmon & herring spawning,sea lions, seals,otters,seabird & eagle nesting,waterfowl concentrations, whales feeding and migrating	Herring spawning, seals, otters,seabird & eagle nesting, waterfowl concentrations, whales feeding and migrating			
Threatened & Endangered Species	Sea lions feed in the area, no noted haulouts						
Environmentally Sensitive Areas	All sites are designated as Environmentally Sensitive Areas						
Other Stakeholder Considerations							
Fisheries	Salmon, herring, crab, groundfish						
Historic Properties	If suspected cultural artifacts are encountered, notify the State Historic Preservation Office and the land managers. Review adjacent GRS (if applicable) for information on historic properties.						
Mariculture	None						
Subsistence	Intertidal harvest, salmon, crab, groundfish						
Tourism/Recreation	High recreational use area- sport fishing, kayaking, anchorage, excursion boats, wildlife viewing						
Waterfront Public Facilities/Parks	Kodiak National Wildlife Refuge-Public use cabin in Uganik Passage	None noted	Kodiak National Wildlife Refuge-Public use cabin in Uganik Passage	None noted			
Waterfront Private Facilities	Numerous private homes in Uganik Bay/Village Islands	Numerous private homes in Dry Spruce Bay, Port Bailey Cannery	Numerous private homes in Uganik Bay/Village Islands	Numerous private homes in Dry Spruce Bay. Port Bailey Cannery Dock			
Response and Salvage Resource Considerations							
Ability to Boom Vessel	Weather dependent	No		Yes			
Geographic Response Strategies	K-28 Campbell Lagoon,K-29 Village Islands, K-30 Noisy Island,K-31 Uganik Passage	K-35 Dry Spruce Bay	K-28 Campbell Lagoon,K-29 Village Islands, K-30 Noisy Island,K-31 Uganik Passage	K-35 Dry Spruce Bay			
Closest Alternative Places of Refuge (same sized vessel)	PPOR 07-26-D Uyak Anchorage-32nm	PPOR 03-06-D Peregrebni Point-Kizhuyak Bay-15nm	PPOR 08-65-L Dry Spruce Bay 1-19nm	PPOR 08-66-L Dry Spruce Bay 2-1nm	PPOR 08-65-L Dry Spruce Bay 1-1nm	PPOR 08-90-S Port Bailey Dock-1nm	PPOR 08-89-S Dry Spruce Island-1nm

Site ID Number and Vessel Size Classification
D = Deep Draft Vessel, greater than 20,000 GT
L = Light Draft Vessel, up to 20,000 GT
S = Shallow Draft Vessel, 300 GT and less

Kodiak PPOR 08 Uganik Bay to Kupreanof Strait Area Stakeholders	
<i>Landowner (yr-2006)</i>	<i>Contact</i>
Kodiak National Wildlife Refuge	Dept. of the Interior-Regional Environmental Officer
Alaska Maritime National Wildlife Refuge	Dept. of the Interior-Regional Environmental Officer
Uganik Natives Inc.	Chief Executive Officer
Alaska Department of Natural Resources	Natural Resource Manager
Kodiak Island Borough	Borough Manager
Afognak Native Corporation	Chief Executive Officer
Private Landowners-contact Alaska State Lands Recorder Office	Kodiak District Recorder
30 Native Allotments	Dept. of the Interior-Regional Environmental Officer

Kodiak PPOR-08 Physical and Operational Characteristics – Uganik Bay to Kupreanof Strait Area							
Name	Uganik Bay	Bare Island-Kupreanof Strait	Noisy Island	Dry Spruce Bay 1	Dry Spruce Bay 2	Dry Spruce Island	Port Bailey Cannery Dock
ID Number	29-D	30-D	64-L	65-L	66-L	89-S	90-S
Anchorage Locations	557°43.76'N 153°31.06'W	57°58.11'N 153°07.20'W	57°56.05'N 153°32.78'W	57°56.34'N 153°02.81'W	57°55.86'N 153°00.96'W	57°56.94'N 153°02.72'W	PPOR 08-88-S Dry Spruce Island
Mooring Locations	Nearest PPOR 02-44-L Kazakof Bay-1 Moorage						
Docks/Piers	Nearest PPOR 08-90-S Port Bailey Cannery-10ft. max vessel draft at MLLW						57°55.86'N 153°02.41'W
Maximum Vessel Size	Deep draft, greater than 20,000 Gross Tons		Light draft, up to 20,000 Gross Tons			Shallow draft, 300 Gross Tons and less	
Type of Berthing	Anchorage						Dock/Pier
Contact	N/A						Port Bailey Wild-(866)292-3260
Navigational Approach	Approach from N	Approach from W	Approach from N,S	Approach from W			
Minimum Water Depths	17 Fathoms in swing area	21 Fathoms in swing area	13 Fathoms in swing area	14 Fathoms on approach	16 Fathoms in swing area	4 Fathoms in swing area	1.5 Fathoms at the Dock Face
Maximum Water Depth	40 Fathoms in swing area	40 Fathoms in swing area	20 Fathoms in the swing area	22 Fathoms in swing area	19 Fathoms in swing area	19 Fathoms in swing area	6 Fathoms on approach
Maximum Vessel Draft	60 ft					20 ft.	10 ft. MLLW
Swing Room/Dock Face	3600 ft.	3000 ft.	1500 ft.	1800 ft.	1800 ft.	600 ft.	1000 ft.
Bottom Type	Volcanic Ash	Clay, rocky	Sand	Mud			N/A
Prevailing Winds	Variable in direction and velocity, strong winds occur throughout the area						
Currents	Alaska Coastal Current runs SE down Shelikof Strait						
Tides	Mean High Water-13.6 (Higher-14.6) , Mean Low Water- 1.7 (Lower- -4.5)	Mean High Water-13.5 (Higher-14.4) , Mean Low Water- 1.7 (Lower- -4.5)	Mean High Water-13.6 (Higher-14.6) , Mean Low Water- 1.7 (Lower- -4.5)	Mean High Water-13.5 (Higher-14.4) , Mean Low Water- 1.7 (Lower- -4.5)			
Sea Conditions	Exposed to swell from the N	Exposed to swell from the E, W	Exposed to swell from the N,S	Sheltered			
Shelter from Severe Storms	Exposed to storms from the E, S	Exposed to storms from the N, S	Exposed to storms from the N, E	Sheltered			
Fog	Fog can occur during all seasons.						

NOTE: Sensitive resource information can be found on other maps which can be accessed through the sensitive area section of the Kodiak Sub-Area Contingency Plan: <http://www.akrrt.org/kodiakplan/kodiakplantoc.shtml>