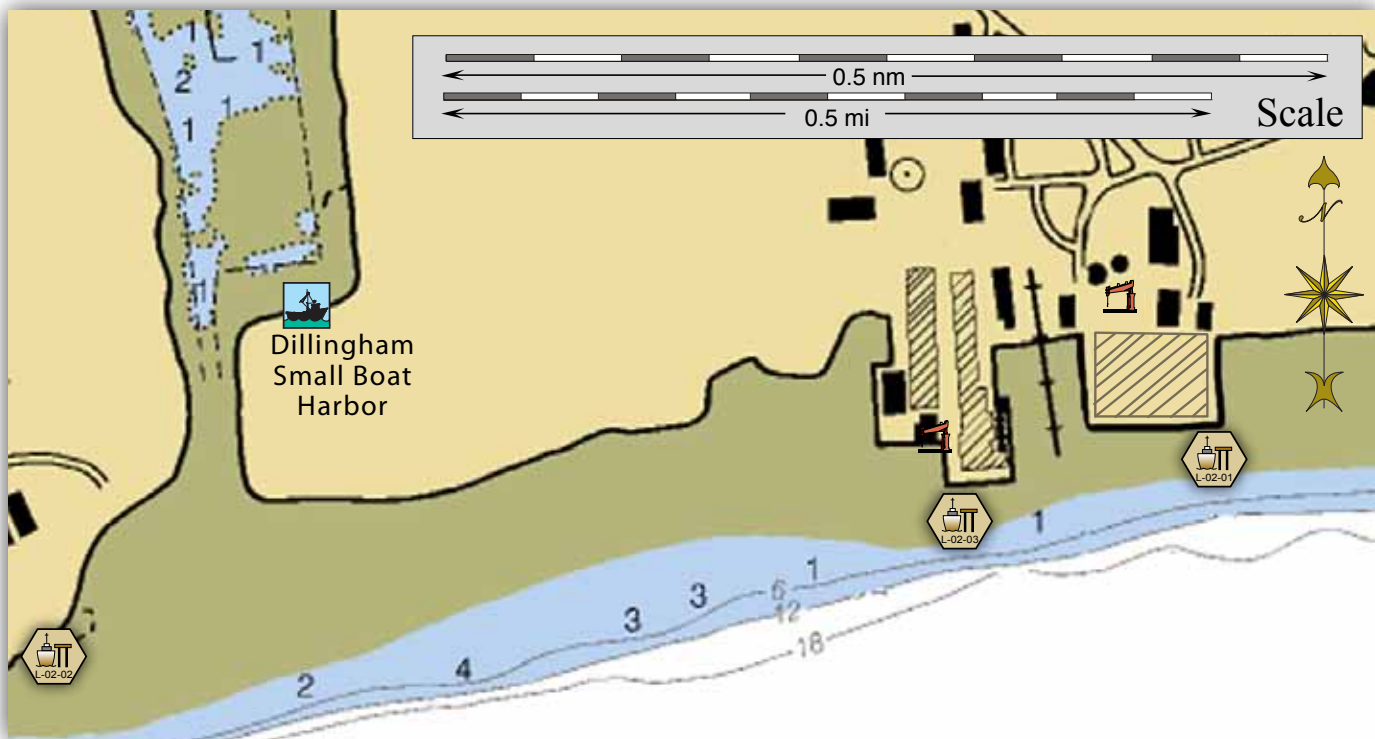


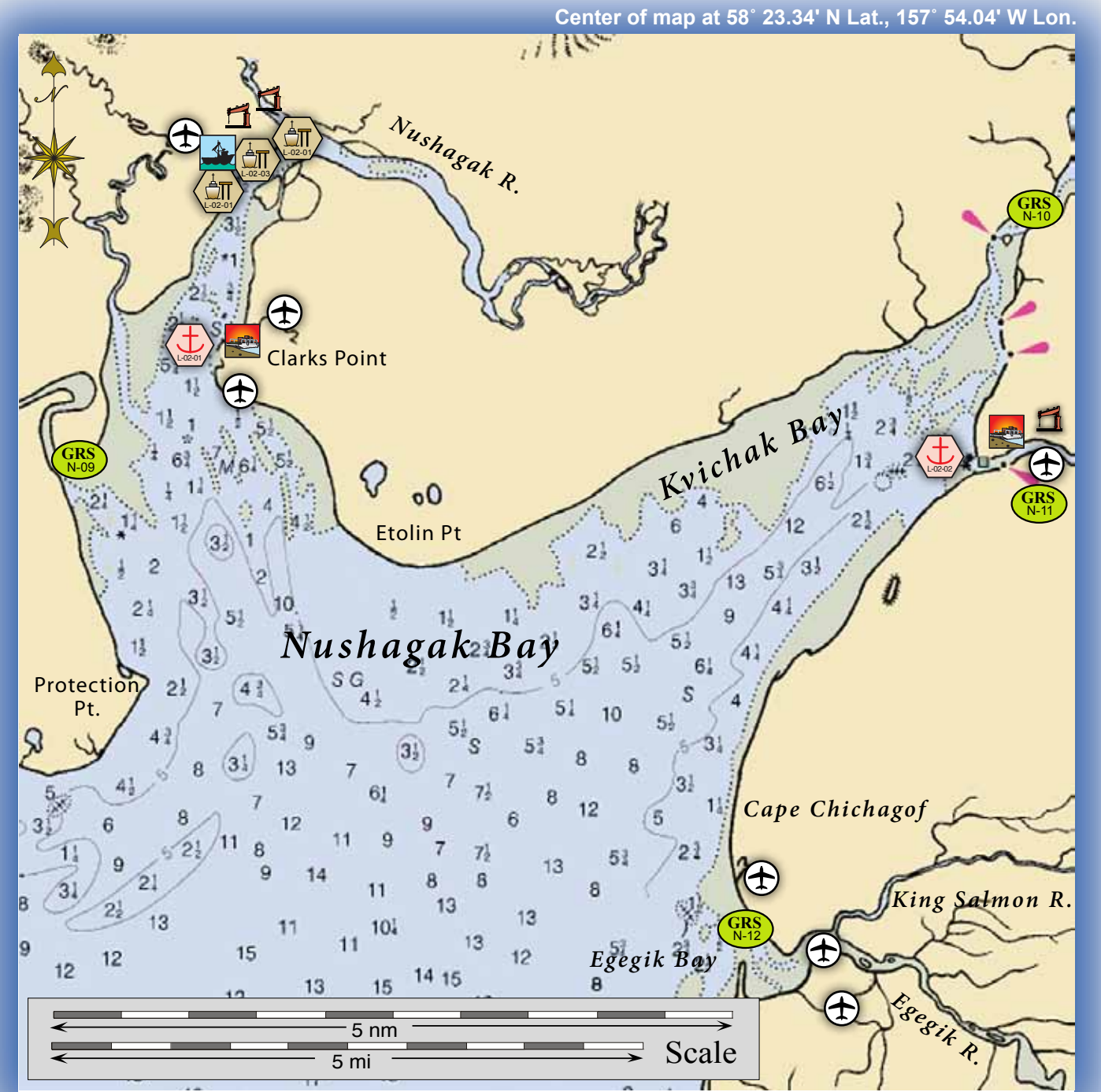
L-02-01, Clarks Point.



S-02-01, Dillingham Cargo Dock and S-02-02, Dillingham Fuel Terminal.

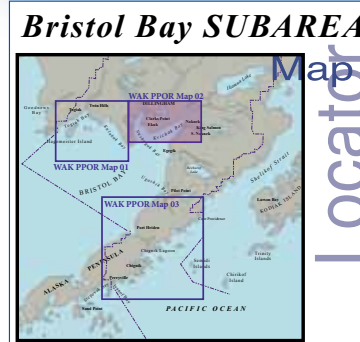
Stakeholders for PPOR Zone 02 of the Bristol Bay Subarea			
Landowners (year-2012)	Contact	Landowners (year-2012)	Contact
Curyung Tribal Council	First Chief	Bristol Bay Borough	Mayor
Choggiung Limited	President	Bristol Bay Native Corporation	President / CEO
City of Dillingham	Manager	Bureau of Land Management	Dept of the Interior-Regional Environmental Officer
City of Naknek	Village Coordinator	Alaska Department of Natural Resources	State Historic Preservation Officer
Naknek Native Village	President	Native Allotments	Dept of the Interior-Regional Environmental Officer
Paug-Vik Incorporated, Limited	President	Togiak National Wildlife Refuge	Dept of the Interior-Regional Environmental Officer

Potential Places of Refuge for Bristol Bay Subarea



This is not intended for navigational use.

Soundings in fathoms



**Map Legend**

- Anchorage
- Mooring
- Dock/pier
- Crane
- Airport
- GRS Site
- Private Cabins
- Public Use Cabins
- Boat Harbor
- Barge Landing

**Bristol Bay PPOR Map 02**  
 USGS 1:1,534,076 Quadrangle Map Reference - Bering Sea Eastern Part 16606\_1

Site Considerations for PPOR Zone 02 of the Bristol Bay Subarea					
	Clarks Point	Naknek River	Dillingham-Cargo Dock	Dillingham-Fuel Terminal	Dillingham-Processing Plant
ID Number	L-02-01	L-02-02	S-02-01	S-02-02	S-02-03
<b>Human Health &amp; Safety</b>					
Community-distance to (nm)	Dillingham - 13 nm / pop. 2,376		Naknek - 5 nm / pop. 571		
Health Care Facilities	Kanakanak Hospital Public Health Services: 907-842-5201 / Dillingham Volunteer Fire & Rescue: 907-842-2288 / 5354		Camai Community Health Center: 907-246-4214 / Bristol Bay Borough Fire Department: 907-246-4222 / 4224		
<b>Natural Resources Considerations</b>					
Fish & Wildlife	Waterfowl concentration, shorebird concentrations, anadromous fish		Waterfowl concentration, shorebird concentrations, anadromous fish, seal haulouts		
Threatened & Endangered Species	None				
Sensitive Areas	None designated				
<b>Other Stakeholder Considerations</b>					
Fisheries	Salmon				
Historic Properties	Historic properties are present throughout the area.				
Subsistence	High level of subsistence activity.				
Tourism/Recreation	Seasonal tourism and local recreation.				
Waterfront Public Facilities/Parks	Togiak National Wildlife Refuge		Togiak National Wildlife Refuge, Port of Dillingham		
Waterfront Private Facilities	Decommissioned cannery wharf		Cannery facilities in river		
<b>Response and Salvage Resource Consideration</b>					
Ability to Boom Vessel	No		Weather dependent		
Geographic Response Strategies	None		N-11		
Closest Alternative Place of Refuge for same sized vessel	55 nm to L-02-02		55 nm to L-02-01		

Site ID Number & Vessel Size Classification
DII = Deep Draft Vessels lengths up to 1000 feet, 40-60 feet of draft, greater than 10,000 GT
DI = Deep Draft Vessels lengths up to 1000 feet, 20-40 feet of draft, greater than 10,000 GT
L = Light Draft Vessel up to 450 feet in length, draft up to 20 feet
S = A shallow draft vessel less than 300 Gross Tons, has a draft less than 15 ft., LOA less than 200 ft

Physical and Operational Characteristics for PPOR Zone 2 of the Bristol Bay Subarea					
	Clarks Point	Naknek River	Dillingham-Cargo Dock	Dillingham-Fuel Terminal	Dillingham-Processing Plant
ID Number	L-02-01	L-02-02	S-02-01	S-02-02	S-02-03
Location (In the general area)	58°49.65'N 158°36.77'W		58°43.88'N 157°10.12'W		
Maximum Vessel Size	Light Draft Vessels - up to 450 ft. in length, up to 20 ft. draft		Shallow Draft Vessels are less than 300 gross tons and have drafts less than 15 ft.		
Type of Berthing	Anchorage		Dock		
Contact	N/A		907.842.5516		
Navigational Approach	Approach from the S		Approach from the SW		
Minimum Water Depths (MLLW)	26 ft.		20 ft.		
Maximum Vessel Draft	21 ft.		15 ft.		
Swing Room or Dock Face (w/ dolphins)	0.25 nm to shoal		0.14 nm to shoal		
Bottom Type	Mud		Sand		
Nearest Alternative Dock/Piers	13 nm to S-02-03 (shallow draft vessel)		0.39 nm to Naknek (shallow draft)		
Nearest Alternative Anchorage	55 nm to L-02-02B		55 nm to L-02-01B		
Prevailing Winds	During June, July, and August, winds are out of the S through SW about 40 percent of the time, at average speeds of 8 to 10 knots. Storms entering Bristol Bay funnel wind into bays and passes creating locally intense winds of significant force.				
Currents	Currents up to 4 knots on ebb and flood and are influenced by the river flow and continuous winds.		Currents up to 2.5 knots at the anchorage.		
Tides	Mean High 17.8 ft. (Higher 19.5) Mean Low 2.5 (Lower -5.0)		Mean High 20.7 ft. (Higher 22.6) Mean Low 2.2 (Lower -2.0)		
Sea Conditions	Exposed to southerly swell		Sheltered from storms from the W to the S.		
Shelter from Severe Storms	Exposed to S		Exposed to SW		
Fog	Fog sometimes sets in from the sea, but there is little fog during the summer.				
Ice	Ice present from November to April but is broken and drifts with the current and wind.				

NOTE: Sensitive resource information can be found on other maps which can be accessed through the sensitive area section of the Bristol Bay Subarea Contingency Plan: [http://dec.alaska.gov/spar/perp/plans/scp\\_bb.htm](http://dec.alaska.gov/spar/perp/plans/scp_bb.htm)