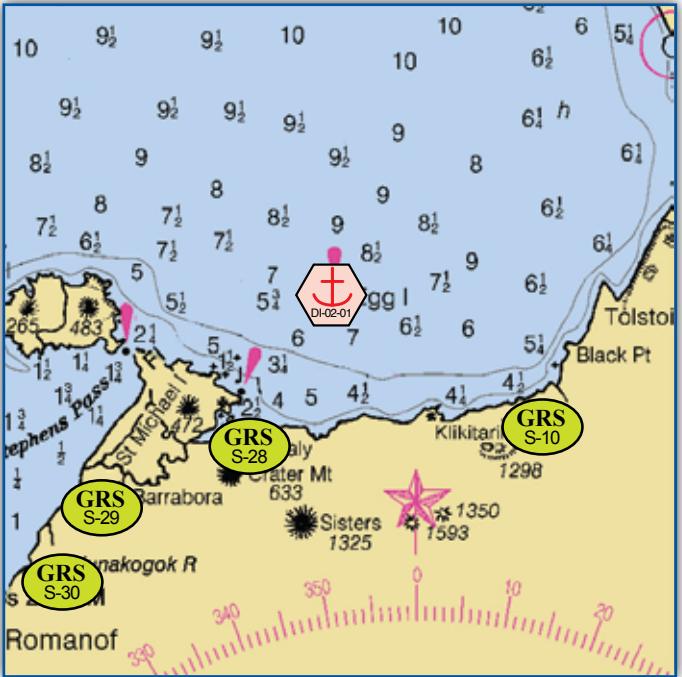
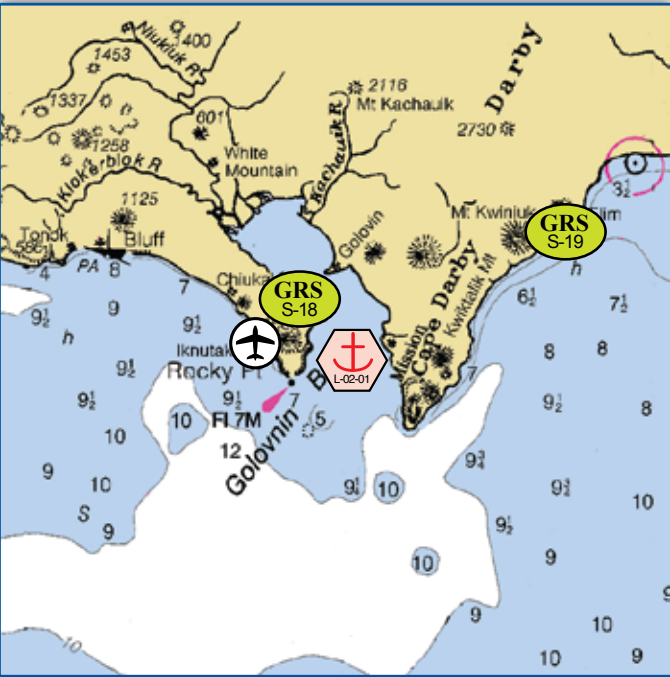


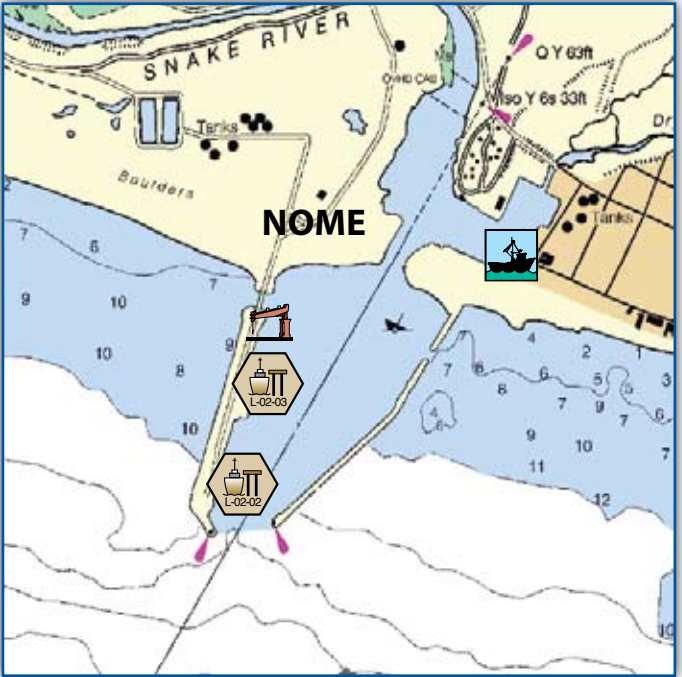
DI-02-01 Nome Anchorage & DI-02-02 Sledge Island.



DI-02-01, St Michael Bay.



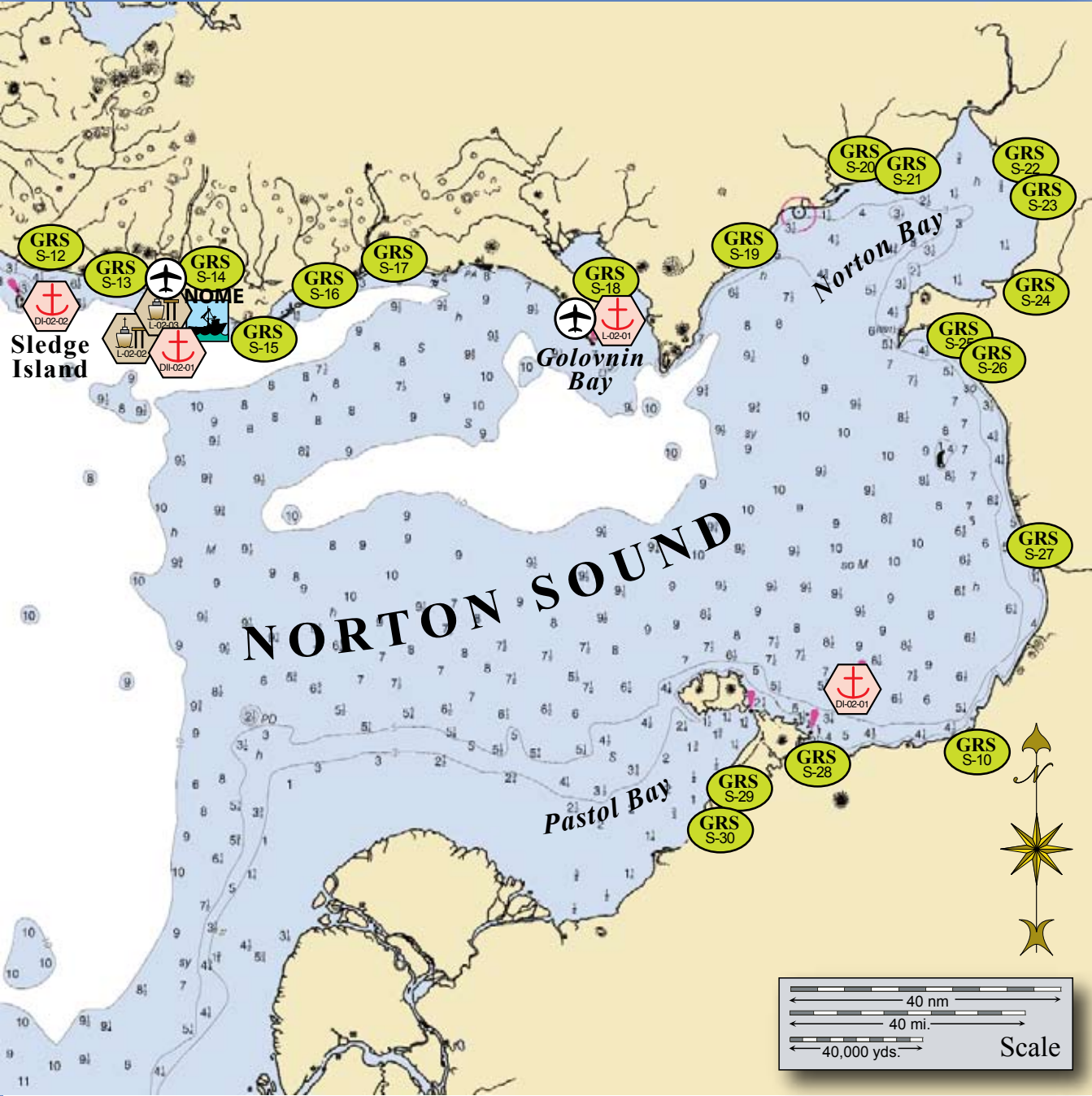
L-02-01, Golovnin Bay.



L-02-02 City Dock Port of Nome & L-02-03 Westgold Dock Port of Nome.

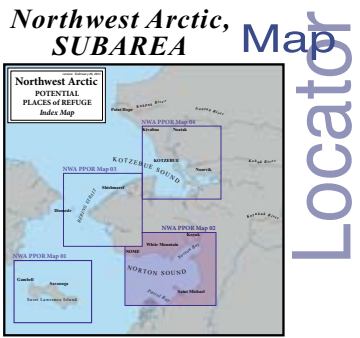
Stakeholders for PPOR Zone 02 of the Northwest Arctic Subarea					
Year-2011	Contact	Year-2011	Contact	Year-2011	Contact
Yukon Delta National Wildlife Refuge	Dept. of the Interior-Regional Environmental Officer	City of St. Michael	Mayor	City of Nome	Mayor
Alaska Department of Natural Resources	State Historic Preservation Officer	City of Golovin	Mayor	Bering Straits Native Corporation	President
Native Allotments	Dept. of the Interior-Regional Environmental Officer	City of Unalakleet	Mayor	Kawerak, Incorporated	Executive Director
National Park Service - Bering Straits N.P.	Dept. of the Interior-Regional Environmental Officer	City of Shaktoolik	Mayor	Alaska Dept. of Fish & Game	Resource Manager

Potential Places of Refuge for Northwest Arctic Subarea



This is not intended for navigational use.

Soundings in fathoms



**Legend**

- Anchorage
- Airport
- Mooring
- Existing GRS
- Dock/pier
- Boat Harbor

**Northwest Arctic PPOR Map 02**

USGS 1:1,534,076 Quadrangle Map Reference - Bering Sea Eastern Part Map 16006\_1



Physical and Operational Characteristics for PPOR Map 02 of the Northwest Arctic Subarea-Norton Sound						
	Nome Anchorage	St. Michael Bay	Sledge Island	Golovnin Bay	City Dock-Port of Nome	Westgold Dock-Port of Nome
ID Number	DII-02-01	DI-02-01	DI-02-02	L-02-01	L-02-02	L-02-03
Location ( <i>In the general area</i> )	64°26.48'N 165°27.10'W	63°30.73'N 161°49.71'W	64°31.94'N 166°11.30'W	64°32.99'N 163°06.96'W	64°29.65'N 165°26.33'W	64°29.76'N 165°26.24'W
Maximum Vessel Size	Deep Draft Vessels - lengths to 1000 ft. or greater, 40-60 ft. of draft, greater than 10,000 GT	Deep Draft Vessels - lengths to 1000 ft., 20-40 ft. of draft, greater than 10,000 GT		Light Draft Vessels - up to 450 ft. in length, up to 20 ft. draft		
Type of Berthing	Anchorage			Dock		
Contact	N/A			City of Golovin: 907-779-3211	City of Nome / Port Operations: 907-443-6663	
Navigational Approach	Approach from E	Approach from N, NW	Approach from N, S, W	Approach from SE	Approach from S, W	Approach from S, W
Minimum Water Depths ( <i>MLLW</i> )	10 Fathoms	5 Fathoms	3 Fathoms	4 Fathoms (2 - approach)	22.5 ft.	
Maximum Vessel Draft	60 ft.	40 ft.		20 ft.		
Swing Room or Dock Face ( <i>w/ dolphins</i> )	3.5 nm to shoal	3 nm to shoal	0.75 nm to sea mount	2,100	200	190
Bottom Type	Sand, Mud, Gravel	Hard	Rocky	Hard, Sticky	Mud	Mud
Nearest Alternative Dock/Piers	3.8 nm to L-02-02	70 nm to L-02-01	20 nm to L-02-02	76 nm to L-02-02	0 nm to L-02-03	0 nm to L-02-02
Nearest Alternative Anchorage	20 nm to DI-02-02	110 nm to DII-02-01	20 nm to DII-02-01	110 nm to DI-02-01	3.8 nm to DII-02-01	3.8 nm to DII-02-01
Prevailing Winds	Average monthly wind speed 10 knots	Norton Sound prevailing summer winds from the S with variable force.				
Currents	1 knot E on flood / NW on ebb	0.8 knots SE on flood / N on ebb	No data noted	0.5 knots N on flood / S on ebb	1 knot E on flood / NW on ebb	1 knot E on flood / NW on ebb
Tides	Mean High 4.94 ft. (Higher 5.12) Mean Low 3.89 (Lower 3.59)	Diurnal, range of 3.9 ft.	Tide rips in the passage and on E side in heavy weather.	Diurnal, range 1.8 ft. influenced by prevailing winds	Mean High 4.94 ft. (Higher 5.12) Mean Low 3.89 (Lower 3.59)	Mean High 4.94 ft. (Higher 5.12) Mean Low 3.89 (Lower 3.59)
Sea Conditions	Exposed to building sea conditions with storms from the south.	Exposed to building sea conditions with storms from the north.	The island may be safely approached from any direction except the E where a depth of 3 fathoms is 0.9 mile E of the light.	Exposed to building sea conditions with storms from the southeast.	A bar shifts its position outside the entrance, the bar is reported to be no problem for small craft. The general anchorage for deep-draft vessels is in 7 to 8 fathoms about 1 mile from the beach abreast of Nome. Vessels of less draft anchor in about 6 fathoms a little closer to the beach. In strong S winds vessels should anchor farther offshore.	
Shelter from Severe Storms	Sheltered from N winds / Exposed to E, W	Exposed to winds from NW, N, E	Weather Dependent	Sheltered from N, S, E, W	Sheltered from storms	Sheltered from storms
Fog	Generally Norton Sound is fog free	Fogs are rare except in the spring with close ice floes and W winds.	Generally Norton Sound is fog free			
Ice	Early December to early June					

Site Considerations for PPOR Zone 02 of the Northwest Arctic Subarea-Norton Sound Area							Site ID Number & Vessel Size Classification
	Nome Anchorage	St. Michael Bay	Sledge Island	Golovnin Bay	City Dock-Port of Nome	Westgold Dock-Port of Nome	
ID Number	DII-02-01	DI-02-01	DI-02-02	L-02-01	L-02-02	L-02-03	DII = Deep Draft Vessels lengths up to 1000 feet, 40-60 feet of draft, greater than 10,000 GT
Human Health & Safety							
Community-distance to (nm)	Nome - 3 nm/ pop. 3598	St. Michael - 6 nm/ pop. 401	Nome - 20 nm/ pop. 3598	Golovin - 1 nm/ pop. 156	Nome - .75 nm/ pop. 3598	Nome - .75 nm/ pop. 3598	
Health Care Facilities	Norton Sound Regional Hospital: 907-443-3311 / Nome Health Center: 907-433-3221	Katherine Kobuk Memorial Clinic: 907-923-3311	Norton Sound Regional Hospital: 907-443-3311 / Nome Health Center: 907-433-3221	Irene L Aukongak Health Clinic: 907-443-3311	Norton Sound Regional Hospital: 907-443-3311 / Nome Health Center: 907-433-3221		DI = Deep Draft Vessels lengths up to 1000 feet, 20-40 feet of draft, greater than 10,000 GT
Natural Resources Considerations							
Fish & Wildlife	Waterfowl migration area	High density seabird nesting, Waterfowl concentrations, Polar bears, Salmon spawning	High density seabird nesting, Waterfowl migration area, Polar bears	High density waterfowl & shorebirds, Polar bears, Salmon spawning	Waterfowl migration area, Salmon spawning		
Threatened & Endangered Species	Spectacled & Steller's eiders (threatened)	Spectacled eiders & Polar bears (threatened)			Spectacled & Steller's eiders (threatened)		L= Light Draft Vessel up to 450 feet in length, draft up to 20 feet
Sensitive Areas	Not Designated - treateden or endangered species present	Spectacled eider & Polar bear critical habitat	Spectacled eiders critical habitat	Spectacled eider & Polar bear critical habitat	Not Designated - treateden or endangered species present		
Other Stakeholder Considerations							
Fisheries	Groundfish, Crab, Salmon, Herring						S = A shallow draft vessel less than 300 Gross Tons, has a draft less than 15 ft., LOA less than 200 ft
Historic Properties	Historic properties are present throughout the area.						
Subsistence	High-level subsistence activities		Low-level subsistence activities	High-level subsistence activities			
Tourism/Recreation	Local recreation		None	Local recreation			
Waterfront Public Facilities/Parks	Port facilities in Nome Harbor	None			Port facilities in Nome Harbor		
Waterfront Private Facilities	None						
Response and Salvage Resource Consideration							
Ability to Boom Vessel	No	Weather dependent	No	Weather depenent	Yes		
Geographic Response Strategies	S-13, S-14, S-15	S-28, S-29	S-12	S-18	S-14		
Closest Alternative Place of Refuge for same sized vessel	20 nm to DI-02-02	110 nm to DII-02-01	20 nm to DII-02-01	110 nm to DI-02-01	3.8 nm to DII-02-01	3.8 nm to DII-02-01	