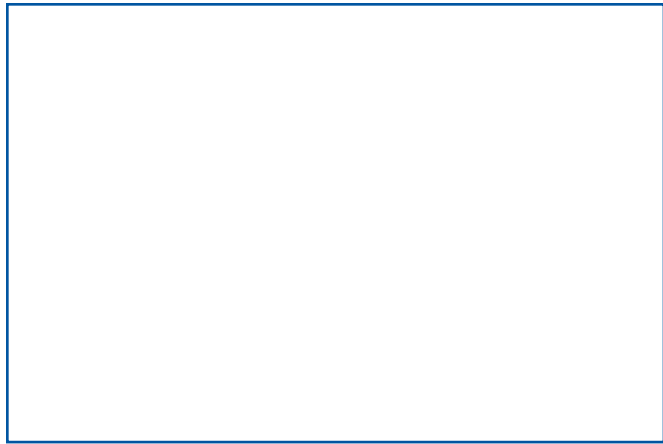
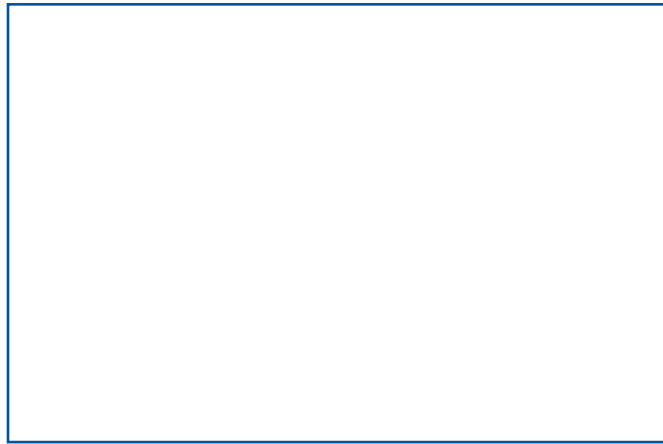


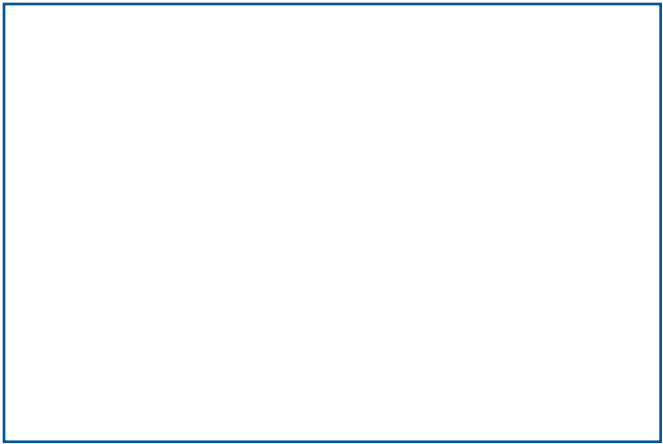
Potential Places of Refuge for North Slope Alaska Subarea



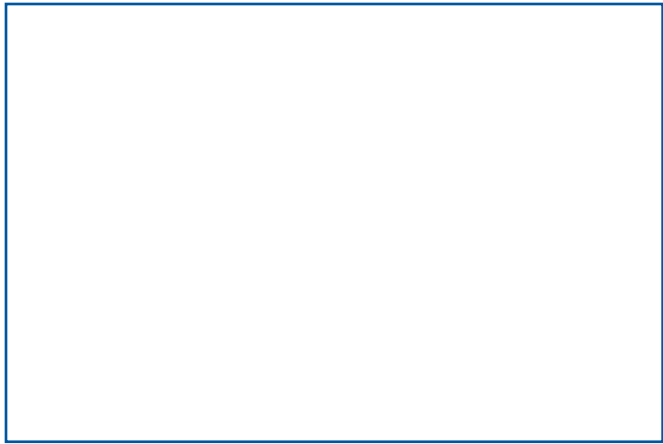
caption.



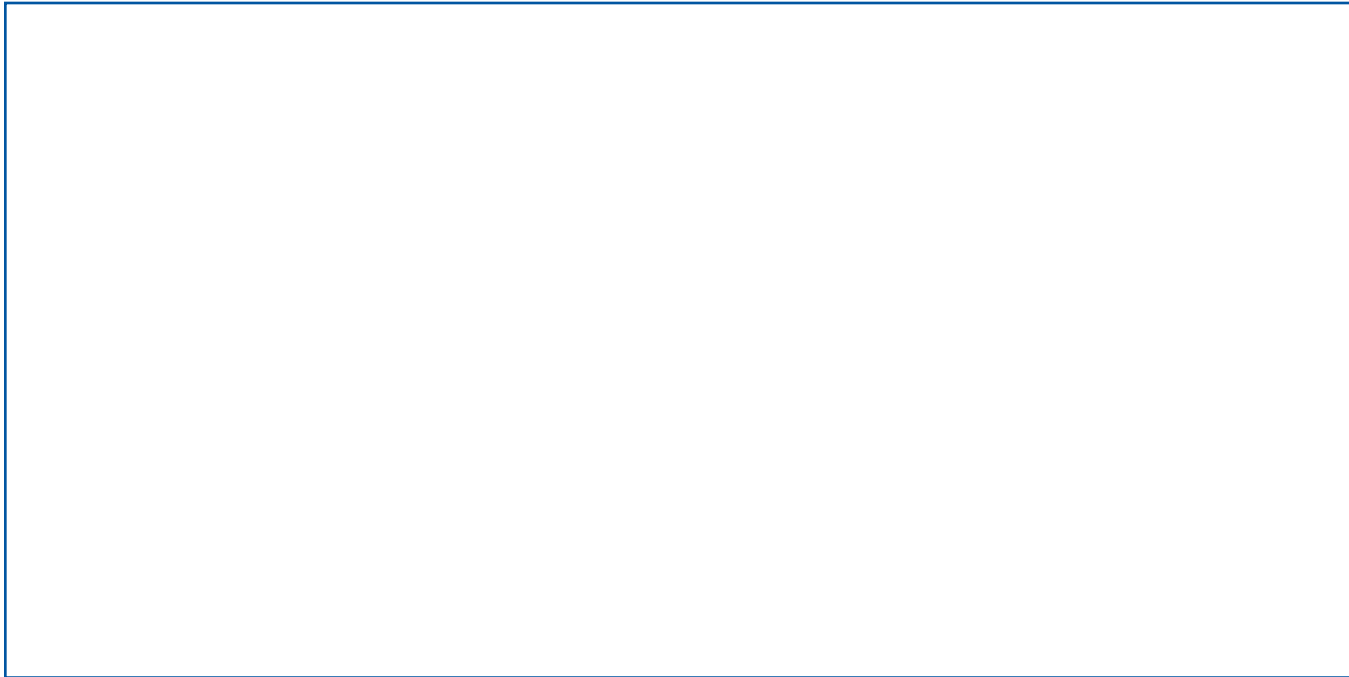
caption



caption

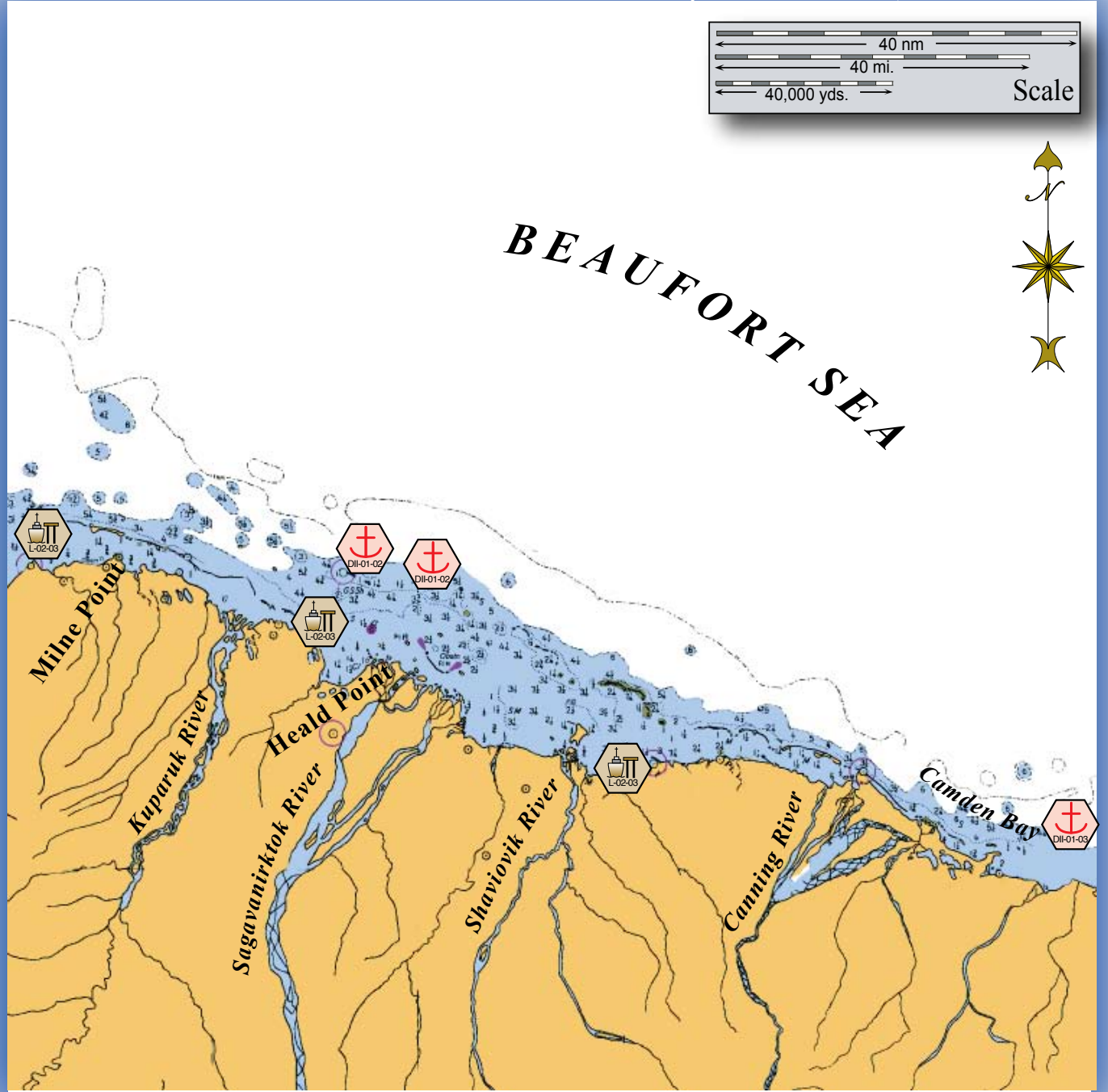
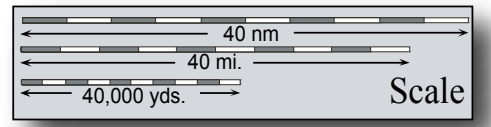


caption



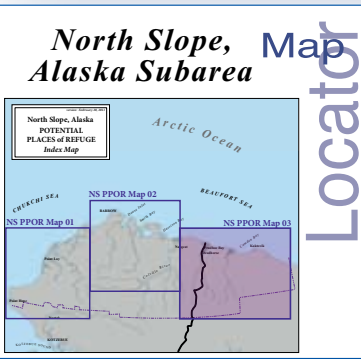
caption

Center of map at 70° 44.89' N Lat., 147° 07.35' W Lon.



This is not intended for navigational use.

Soundings in fathoms



	Anchorage		Existing GRS
	Mooring		Fish Hatchery
	Dock/pier		Aquatic Farms
	Crane		Private Cabins
	Airport		Public Use Cabins
			Boat Harbor

North Slope Alaska PPOR Map 03

USGS 1:1,587,870 Quadrangle Map Reference - Arctic Coast Map 16003\_1

\*

\*

\*For current mariculture operations, ownership information and locations, consult the ADF&G mariculture website: <http://www.cf.adfg.state.ak.us/geninfo/enhance/maricult/maricult.php>

Site ID Number and Vessel Size Classification
D = Deep Draft Vessel-lengths to 1,000 ft or greater, 20-40 ft of draft, greater than 10,000 GT
L = Light Draft Vessel-up to 450 feet in length, draft up to 20 ft