

**Appendix D**  
**Site Photographs**



Photo 1: Sampling location SU1. View is toward southeast. (Floyd)



Photo 2: Location SU2. View is of presumed pipeline corridor off of Salcha School ski trail. (Glascott)



Photo 3: Overview of SU3 area, looking south along corridor. Yellow object in middle of photo is pipeline mile-marker “577”; sampling location SU3 was approximately 200 ft beyond the mile marker. (Floyd)



Photo 4: Overview of sampling location SU4. Sampling location was to the left of the water-filled trench. (Glascott)





Photo 5: Preparing subsampling points with hand auger at background location BK5, along J. Fowler cabin road. The yellow disposable oversuits were worn as protection from heavy rain and wet brush, not because of concerns of chemical exposure. (Floyd)

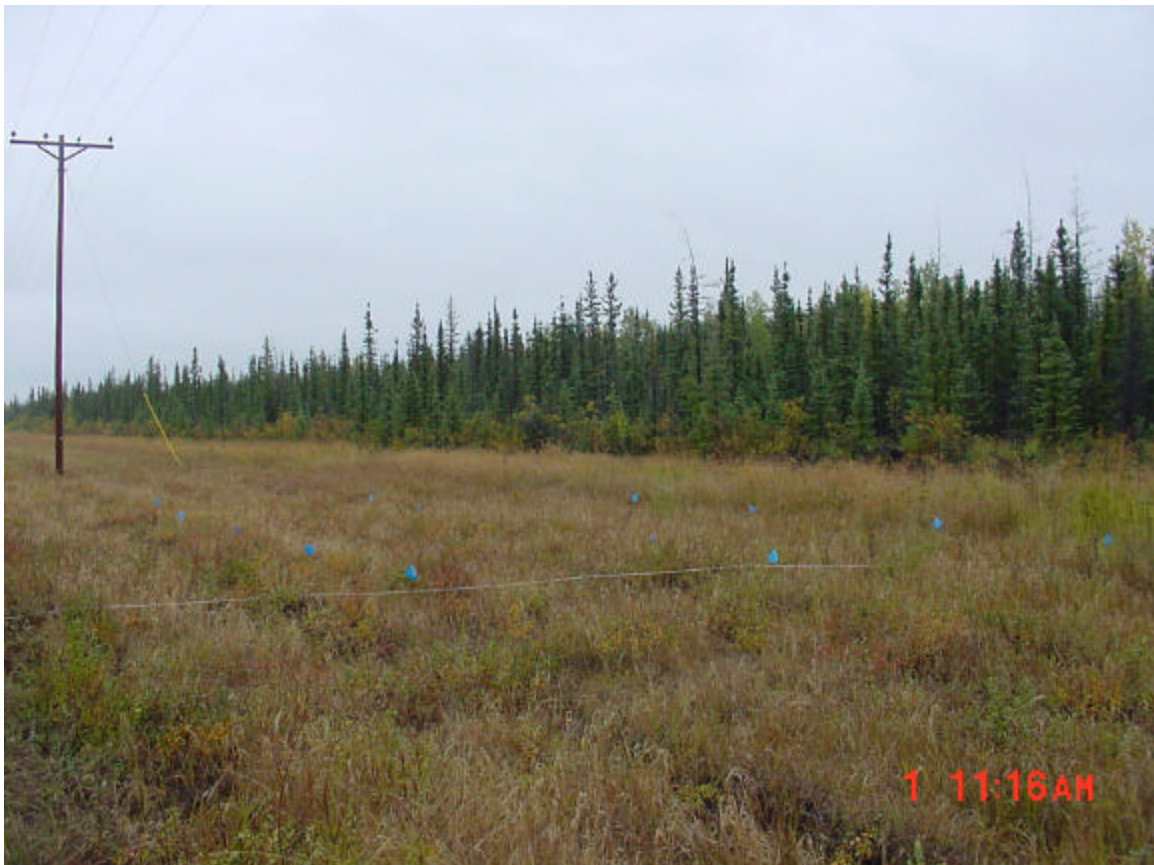


Photo 6: Sampling location SU6. (Glascott)





Photo 7: Sampling location SU7. (Glascott)



Photo 8: Sampling location SU8. (Glascott)