



ALASKA DEPARTMENT OF ENVIRONMENTAL CONSERVATION
Division of Spill Prevention and Response
Prevention Preparedness and Response Program
SITUATION REPORT (SITREP)

CHANGES FROM PREVIOUS SITREPS ARE DENOTED IN RED

MP317 Richardson Hwy US Army Tanker Rollover



SITREP #: 2

SPILL #: 18309906301

TIME/DATE OF DISTRIBUTION: 4:00 p.m. March 14, 2018

POTENTIAL RESPONSIBLE PARTY (PRP): United States Army.

INCIDENT LOCATION: Milepost 317.3 Richardson Highway, approximately 45 miles South of Fairbanks. The main release occurred at the bottom of a steep embankment adjacent to the highway (the “lower spill area”), but additional release locations are being investigated closer to the paved road surface (the “upper spill area”).

TIME/DATE OF SPILL: The incident occurred at approximately 2:22 p.m., March 4, 2018.

HOW/WHEN SPILL WAS DISCOVERED AND REPORTED: The release was reported to the Alaska Department of Environmental Conservation (ADEC) by the Alaska State Troopers through the afterhours spill line at 3:20 p.m. on March 4, 2018.

TYPE/AMOUNT OF PRODUCT SPILLED: An estimated 600-825 gallons of Jet Propellant 8 (JP-8) was released.

CAUSE OF SPILL: A United States Army (US Army) owned and operated Heavy Expanded Mobility Tactical Truck (HEMTT) tanker hauling an estimated 1,800-1,900 gallons of JP-8 when it departed the roadway, rolled over and slid partially down the west embankment of the highway. The pressure increase inside the tanker triggered a pressure relief valve on the rear hatch of the tanker, causing the majority of the fuel release.

SOURCE CONTROL: The source has been controlled at this time.

RESPONSE ACTION: Initial response actions conducted on March 4 included containing some fuel released from the pressure relief valve on the rear hatch of the tanker. Responders righted the damaged tanker, winched it closer to the shoulder of the road, and lightered the fuel from it to another tanker. The U.S. Army removed the damaged tanker from the site around 3:00 p.m. on March 5 using a Stryker Recovery Vehicle. Personnel from ADEC, Fort Wainwright Department of Public Works, and U.S. Army spill response contractor Paragon-Jacobs conducted an initial delineation and site assessment effort on March 5. At this time, only surface soils are known to be affected and it is yet to be determined if subsurface soils and groundwater has been impacted.

During March 6 through March 9 additional Paragon-Jacobs personnel and resources mobilized to the site, and equipment (two excavators and one dozer) arrived to initiate remedial activities. From March 10 through March 13, Paragon-Jacobs personnel constructed two temporary ramps out of borrow material to safely access the

“lower spill area”, cleared trees within the delineated areas, removed contaminated snow, and delineated the “upper spill area”. During this time frame, several questions about easements, right-of-ways, potential utility interference, and property ownership were evaluated by ADEC, ADOT and ADNR. The various agencies and the impacted land owner have reviewed and approved the Traffic Control Plan, Response Plan, as well as the Lane Closure Permit provided by the U.S. Army on March 7, 2018.

RESOURCES AT RISK OR AFFECTED: To date, only Alaska Department of Transportation & Public Facilities (ADOT&PF) right-of-way is known to have been impacted. ADOT&PF personnel has been assisting the response effort by reviewing and approving various documents to allow for the U.S. Army and Paragon-Jacobs to conduct required response actions. An unnamed chute cutoff channel connected to the Tanana River is within 60 feet from the delineated “lower spill area”. This chute cutoff channel, regardless of the physical ability, is considered navigable and the submerged lands of said channel are property of the State of Alaska and fall under the jurisdiction of Alaska Department of Natural Resources (ADNR). ADNR personnel has visited the spill site and are also actively engaged in the response and ready to provide permits, as needed, for access and activities relating to response actions within the chute cutoff channel and Tanana River. The land southwest of the chute cutoff channel (please see figure below) is private property. A right of entry (ROE) agreement between the private property owners and the U.S. Army Garrison Fort Wainwright is being secured by the U.S. Army Corps of Engineers.

Migration of contaminants from the spill site could impact the unnamed chute cutoff channel and the Tanana River during a thaw event. The Tanana River is considered an anadromous water body, and is of particular concern due to the various species of fish that may be present. Clean up work in the area will impact travel along the Richardson Highway.

FUTURE PLANS AND RECOMMENDATIONS: ADEC will continue to oversee response actions and work with the U.S. Army, as well as the other affected stakeholders, to modify response plans if conditions warrant.

WEATHER: Today: Snow showers; high 27°F; winds light and variable. Tomorrow: Cloudy; high 27°F; winds light and variable.

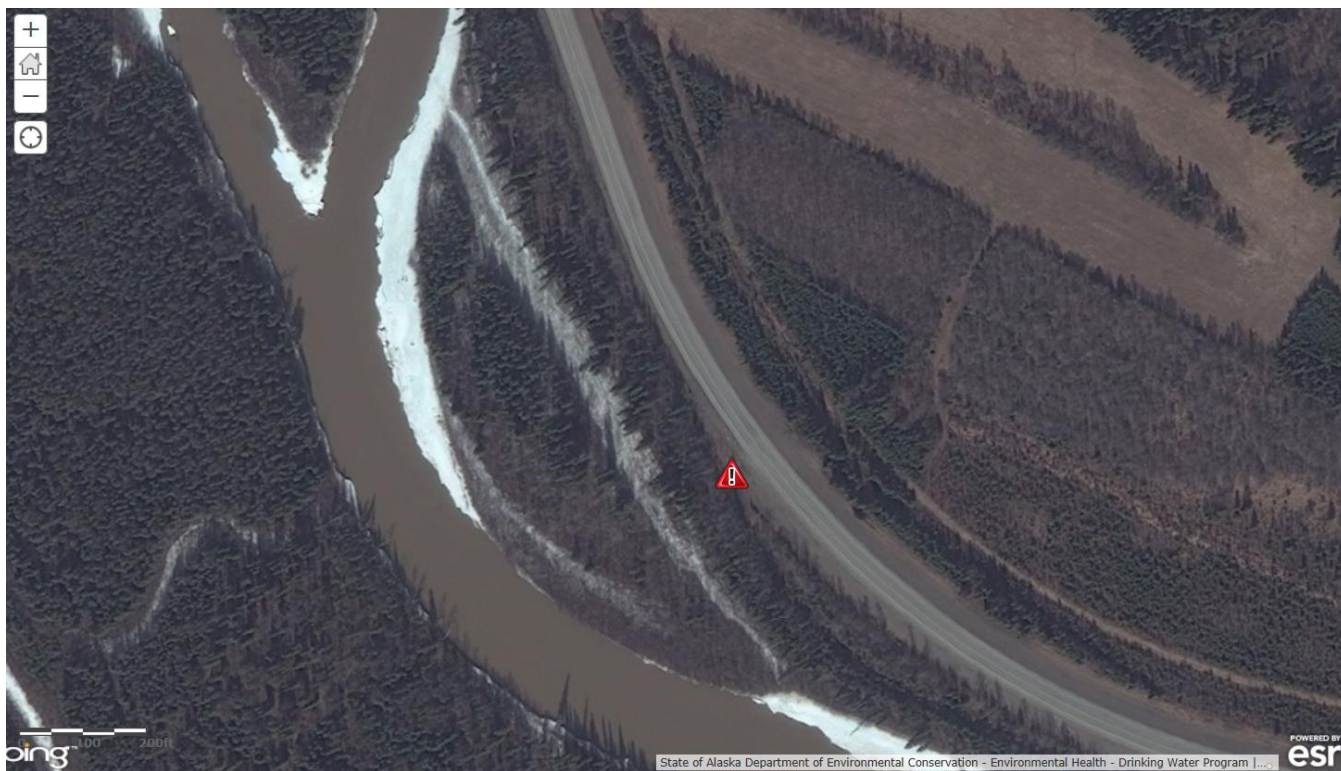
UNIFIED COMMAND AND PERSONNEL:

Incident Commander: **Eric Dick**, US Army
SOSC: Tom DeRuyter, ADEC
FOSC: **Bob Whittier**, EPA
Field SOSC: Patrik Sartz, ADEC

TIME/DATE OF THE NEXT REPORT DISTRIBUTION: As the situation warrants.

FOR ADDITIONAL INFORMATION CONTACT: Tom DeRuyter, SOSC, ADEC (907) 451-2145

<http://dec.alaska.gov/spar/ppr/spill-information/response/sum-fy18/20180307-318-richardson/>



Aerial image showing the Spill Site Location (marked with a red triangle), Richardson Highway, ice covered chute cutoff channel, and the Tanana River (ESRI Basemap Imagery).



Aerial view of spill site on March 12 2018, facing northeast (Photo/ADNR)



Aerial view of spill site on March 12 2018, facing down (Photo/ADNR)



Tree removal at the lower spill area, March 12 2018 (Photo/Paragon-Jacobs)



Ramp constructed to access lower spill area (Photo/ADOT&PF)

AGENCY/STAKEHOLDER NOTIFICATION LIST: Please refer to the first SITREP, distributed March 6 2018, for the agency/stakeholder notification list. The first SITREP can be found by following the link in the **Additional Information** box above.