



# **Alternative Water Solutions Program 2015 Annual Report**

## ***North Pole, Alaska***

Prepared for  
Flint Hills Resources Alaska, LLC

**February 26, 2016**

*Prepared by:*

Barr Engineering Co.  
4300 MarketPointe Drive, Suite 200  
Minneapolis, MN 55435

A handwritten signature in blue ink, appearing to read 'Brian', is positioned above a horizontal line.

Brian Angerman  
Vice President  
Qualified Person as defined by 18 AAC 75.990

Alternative Water Solutions Program  
2015 Annual Report

North Pole, Alaska

February 26, 2016

## Contents

1.0	Introduction .....	1
1.1	Current Extent of Sulfolane Plume .....	1
1.1.1	Buffer Zone .....	1
1.2	Annual Newsletter .....	2
2.0	AWS Program Data Summary .....	3
2.1	AWS Property Information .....	3
2.2	Private Well Water Data Summary .....	3
2.3	POE System Performance .....	4
2.3.1	Treatment System Performance .....	5
2.3.2	Volume of Water Treated .....	5
2.3.3	GAC Usage .....	5
2.4	Bottled and Bulk Water Supply Information .....	5
2.4.1	Bottled Water .....	6
2.4.2	Bulk Water Tanks .....	6
2.4.3	Garden Tanks .....	6
2.5	Commercial Greenhouse Locations .....	6
2.6	City of North Pole Water Supply .....	7
3.0	AWS Program Updates .....	8
3.1	Description of Issues, Problems or Complaints .....	8
3.2	AWS Program Changes .....	8
3.3	WQA Certification .....	9
4.0	Summary .....	10
5.0	References .....	11

## List of Tables

Table 1	AWS Installation Summary
Table 2	2015 Property Transactions
Table 3	POE Treatment Systems Analytical Data Summary
Table 4	2015 POE Treatment Systems Water Usage Summary

## List of Figures

Figure 1	2015 Sulfolane Plume and Monitoring Results
Figure 2	2016 Buffer Zone and Resampling Area
Figure 3	Potable Water Solutions Provided by Flint Hills Resources

## List of Attachments

Attachment A	2015 Mailings to Property Owners
--------------	----------------------------------

## List of Abbreviations and Acronyms

ADEC	Alaska Department of Environmental Conservation
AHL	Arctic Home Living
ARCADIS	ARCADIS, US, Inc.
AWS	alternative water solutions
AWS-MP	Alternative Water Solutions Program-Management Plan
Barr	Barr Engineering Co.
FHRA	Flint Hills Resources Alaska, LLC
GAC	granular activated carbon
NPT	North Pole Terminal
POE	Point-of-Entry
PWS	public water system
PW-ID	private well identification number
QA	quality assurance
QC	quality control
SWI	Shannon & Wilson, Inc.
The City	The City of North Pole, Alaska
WQA	Water Quality Association

---

# 1.0 Introduction

On behalf of Flint Hills Resources Alaska, LLC (FHRA), Barr Engineering Co. (Barr) prepared this Alternative Water Solutions Program – 2015 Annual Report (annual report). This annual report has been prepared in accordance with the Alternative Water Solutions Program-Management Plan (AWS-MP, Barr 2014), to document identification, installation, and maintenance of alternative water solutions (AWS) in the North Pole area in 2015.

Previous investigations conducted by FHRA have determined that a plume of dissolved-phase sulfolane exists in the groundwater downgradient of the North Pole Terminal (NPT) in North Pole, Alaska. Working closely with ADEC, FHRA has initiated a comprehensive response plan which includes delineation of the extent of the sulfolane plume and implementation of onsite remediation measures. In 2015 FHRA continued providing AWS to the affected and potentially affected community. These AWS options include long-term delivery of bottled water, bulk water tank systems, Point-of-Entry (POE) in-home water treatment systems, and interim bottled water.

The data, analyses, and conclusions in this report are part of a collaborative effort among FHRA's consulting team members. The team that provided assistance related to the AWS program includes qualified professionals from Shannon & Wilson, Inc. (SWI), ARCADIS U.S., Inc. (ARCADIS), and Barr. FHRA has engaged these consulting firms to perform various tasks on the project. This report, therefore, encompasses contributions from professionals from each firm in the text, tables, and figures presented.

## 1.1 Current Extent of Sulfolane Plume

FHRA has monitoring wells to characterize the nature and extent of sulfolane impacts and permafrost depths offsite. Since November 2009, groundwater samples have been collected from approximately 861 private wells (671 inside search areas and 190 outside search areas) and analyzed for sulfolane. The approximate extent of dissolved sulfolane in offsite monitoring wells and private wells is shown on Figure 1.

### 1.1.1 Buffer Zone

As described in the AWS-MP, a Buffer Zone of properties with private wells has been established around the perimeter of the sulfolane plume. These properties have not had detections in their wells, but are located adjacent to or near properties with sulfolane detections. Due to their proximity to properties with sulfolane detections, the properties located within the designated Buffer Zone were provided interim bottled water and their wells have been sampled annually. The Buffer Zone properties as determined for 2016 are shown on Figure 2. In addition to the Buffer Zone properties, Figure 2 also includes the 2016 planned annual resampling locations. The AWS-MP (Barr 2014) describes search areas which are also included on Figure 2.

Locations with first detections of sulfolane in drinking water wells in 2015 are shown on Figure 2. These locations were either offered interim bottled water or were already on interim bottled water. One location refused the bottled water.

---

There are several locations without detectable sulfolane that are within the plume and Buffer Zone areas but do not receive interim bottled water (see Figure 2). These locations are part of the annual resampling. FHRA has provided or offered bottled water to all these locations. The reasons for not receiving interim bottled water at present include the following: the residence is vacant (seasonally in some cases), the well is no longer active, the property owner has refused, the well is not used as a drinking-water source, or the property owner is providing their own water.

## **1.2 Annual Newsletter**

The AWS-MP specifies that an annual direct communication newsletter is to be distributed during the first quarter of each year to affected property owners with an AWS, and property owners within the Buffer Zone. FHRA distributed a newsletter in March of 2015, which is provided in Attachment A. A postcard was also distributed in December 2015 to notify residences that the Groundwater Office was relocated as described in Section 3.2 (Attachment A). FHRA also attended two meetings of the Greater Fairbanks Board of Realtors (February and April 2015) and offered to meet with any brokers as another means to ensure that potential property owners in the area have been advised of the AWS program.

---

## 2.0 AWS Program Data Summary

### 2.1 AWS Property Information

Through 2015, FHRA has provided 343 long-term AWS at 320 properties as shown in Table 1 (note that some properties have more than one AWS). There were no new AWS installed in 2015. A map showing AWS installed to date, as listed below, is included on Figure 3.

- 165 POE treatment systems
- 117 bulk water tanks
- 33 long-term bottled water options

In 2010, 28 residences were connected to City water (Table 1).

In addition to the long-term solutions provided above, FHRA is currently providing interim bottled water to 251 addresses (some addresses have multiple residences) that are either affected properties inside the plume that have not selected a long-term AWS, properties that have not had a detection of sulfolane, or properties that are located within or near the Buffer Zone of the plume. FHRA has also provided 52 garden tanks to affected properties that do not have a City water connection.

As described in the AWS-MP, currently FHRA conducts a series of tasks on a routine basis to identify new construction or property transactions within the plume or Buffer Zone area. Table 2 provides a summary of property transactions that were noted by FHRA in 2015.

### 2.2 Private Well Water Data Summary

In 2015, FHRA completed monitoring of private wells through the following programs:

- Annual sampling of private wells within the Buffer Zone and resampling program;
- Initial sampling of private wells inside and outside the sulfolane plume that have never been sampled;
- POE treatment system sampling during scheduled granular activated carbon (GAC) changeouts; and
- Focused sampling such as call-in requests from homeowners and additional deep wells as data needs warrant.

Results and/or laboratory reports for this monitoring were provided to ADEC in the routine semiannual groundwater monitoring reports.

As noted above, FHRA completes monitoring of private wells with POE systems during each GAC changeout. Table 3 provides a summary of monitoring results for sulfolane in private wells with POE

systems. A summary map of private well locations was provided as Appendix A of the Second Semiannual 2015 Offsite Groundwater Monitoring Report (ARCADIS, 2016). Included in Table 3 are results for raw water (Port A) and treated water (Port C or Port D), and commercial locations have been noted. Analytical laboratory reports and ADEC quality assurance/quality control (QA/QC) checklists for 2015 have been previously provided to ADEC in the semiannual groundwater monitoring reports submitted by FHRA, and are not duplicated in this report. Below are points of clarification that have been provided in previous reports for the results presented in Table 3:

- In some instances a raw water sample was collected without a treated water sample on the same date. These instances are related to collection of a raw water sample for a different purpose, such as deep well monitoring, outside of the POE system maintenance.
- High-frequency sampling was completed at select locations (PW-IDs 0157, 0225, 0232, 0657, 1098) in 2010 and 2011 as part of POE in-home pilot testing. These results have been submitted in previous reports including Appendix B of the AWS-MP and are not repeated in this report.
- In POE system monitoring results prior to 2012, FHRA was in development of the sampling protocol and sampled either Port C or Port D to confirm removal of sulfolane. Port C is located after the primary GAC vessel(s) and Port D is located after the redundant GAC vessel.
- In some locations (e.g., PW-IDs 0511, 1155, 1395) one raw water sample result is shown during each monitoring event, but multiple treated water results are shown (i.e. U1-C1, U2-C1, U3-C1, U1-D1, U2-D1, and U3-D1). This is due to the presence of multiple POE treatment systems, so the treated water is sampled at Port C and Port D of each unit ("U").

In 2014, FHRA began collection of additional samples during each GAC vessel changeout that are referred to as C1, C2, D1, and D2. C1 and D1 samples are collected from sample ports C (primary vessel effluent) and D (treatment system effluent), respectively, prior to system maintenance activities. C2 and D2 samples were also collected from sample ports C and D, respectively, following system maintenance activities. D2 samples were only analyzed in the event of a C2 sample sulfolane detection. Samples marked as "D" will continue to be collected; D samples represent effluent conditions prior to a maintenance event where the redundant tank is not replaced. As of the date of this report, FHRA has discontinued the collection of C2 samples, as further described in Section 3.2.

This annual report includes data received through November 10, 2015. The purpose of this data cut-off date is to allow appropriate time for data review and validation prior to submittal of results and laboratory data packets with the semiannual groundwater monitoring reports. The same data cut-off date as the semiannual reports is used for this annual report to maintain consistency with data already submitted to ADEC.

## 2.3 POE System Performance

FHRA has installed POE treatment systems which use sediment filters, a softener, UV filter, and GAC vessels to remove sulfolane. The POE treatment systems also include a water meter that transmits a remote signal to allow tracking of the water usage to schedule routine maintenance, and a series of



---

sampling ports that will allow sampling of the raw water and treated water during service visits. Arctic Home Living (AHL) of Fairbanks has been contracted by FHRA to provide maintenance of the POE treatment systems.

As noted in Section 2.2, data included within this report were received from the laboratory prior to November 10, 2015.

During 2015, POE systems were transferred from PW-0624 and PW-0625 to newly-installed wells on the same properties; POE systems were moved to PW-2219 and PW-2215, respectively. Samples collected from these locations are reported using the new well designation.

### **2.3.1 Treatment System Performance**

The collected data verifies that the POE systems are properly treating the groundwater and performing as designed (Table 3). The data also confirm that proper operation and maintenance of the systems are being performed.

All sulfolane results in the final treated water samples (port D) were below the detection limits with the exception of one sample. Sulfolane was reported in the effluent water sample collected from PW-0597 on July 24, 2015 at 10.1 µg/L. Due to preceding detections in the "C2" samples collected earlier in the month, the samples collected from PW-0597 were turned around quickly by the laboratory. The entire system was checked and the redundant tank was changed out upon receipt of the effluent detection. Samples collected on July 30, 2015 show the system to be operating correctly and the problem mitigated.

### **2.3.2 Volume of Water Treated**

Water usage data was collected on a monthly basis at each POE system in 2015 to confirm water usage rates and to determine the GAC replacement schedule. This monitoring is completed via remote reading of a flow totalizer unit by AHL personnel. Water usage rates were calculated and compared to the treatment volumes included in the Water Quality Association (WQA) certification, as described in the AWS-MP, and used to schedule GAC vessel replacements. Water usage in 2015 for each POE system is summarized in Table 4, and totals to approximately 7,750,000 gallons for 2015.

Through 2015, the POE systems have treated over 31,000,000 gallons of water.

### **2.3.3 GAC Usage**

As noted in Section 2.3.1, scheduling of GAC changeouts is determined by the water usage rate and raw water sulfolane concentration in accordance with the WQA certification. In 2015, changeouts were completed for 568 carbon vessels. Each vessel contains 2.5 cubic feet of GAC, for a total volume of 1,420 cubic feet of GAC used in 2015.

## **2.4 Bottled and Bulk Water Supply Information**

As described in Section 2.1, FHRA currently provides bottled or bulk water for residents who have selected these options as their AWS or are on interim bottled water. Additionally, water is provided to residences

---

with a garden tank. The following sections provide a summary of the source and delivery schedule for the bottled and bulk water supplies.

### **2.4.1 Bottled Water**

In 2015, bottled water delivery was provided on a weekly basis by Spring Alaska. Spring Alaska receives the water from Twin Springs Water (Alaska Public Water System (PWS) ID # AK312813).

Spring Alaska contacts residents weekly to confirm the number of bottles required in advance of delivery. This allows residents receiving this service to manage delivery to their individual needs from week to week. In 2015, 115,065 gallons of water were delivered to these locations. This water volume is estimated based on water delivery invoiced in 2015. Currently, residents of 33 properties have selected long-term bottled water as their long-term AWS. FHRA is also currently providing interim bottled water to 251 locations that are either affected properties inside the plume that did not select a long-term AWS or have not had a detection of sulfolane, or are located within or near the Buffer Zone of the plume.

### **2.4.2 Bulk Water Tanks**

In 2015, water deliveries for bulk tanks were completed by two local suppliers who are permitted by the State of Alaska; Pioneer Wells Inc. (Pioneer Wells) and H2O 2 U, LLC (Water Wagon). Pioneer Wells sources their water from either a well in Fairbanks and treats the water in a water softener system prior to delivery to affected residents (PWS ID #AK2310714), or an untreated well (upon request from homeowners) located at Fox Spring (PWS ID #AK2312156). Water Wagon sources treated water from College Utilities in Fairbanks (PWS ID# AK2310900). Homeowners currently have the option of receiving water from Pioneer Wells or Water Wagon, depending upon their preference. There are currently 117 bulk water tanks installed, and FHRA provided a total of 3,835,459 gallons to these locations in 2015. Water volumes provided are estimated based on water deliveries invoiced in 2015.

The delivery schedule for commercial properties in 2015 was weekly depending upon usage. For residential properties, the delivery schedule was weekly or twice-monthly depending upon usage.

### **2.4.3 Garden Tanks**

For residents that selected to have a garden tank installed, FHRA has provided up to 2,000 gallons per season. In 2015, the water was supplied by Pioneer Wells, with water sourced from an untreated well located at Fox Spring (PWS ID# AK2312156), untreated well located in Fairbanks (PWS ID# A2310714), or treated water from Fairbanks (PWS ID# AK2110714). There are currently 52 garden tanks installed, and FHRA provided a total of 30,909 gallons to these locations in 2015.

## **2.5 Commercial Greenhouse Locations**

There is currently one commercial greenhouse located within the impacted area; Hawks Greenhouse at 2260 Old Richardson Highway. FHRA has installed four bulk water tanks at this location with a total storage capacity of 10,000 gallons. The bulk water tanks are filled by Pioneer Wells, with water sourced from an untreated well located at Fox Spring (PWS ID# AK2312156). In 2015, the bulk water supplier,

---

contracted by FHRA, provided a total of 88,582 gallons to this location. The delivery schedule was two or three times per week, dependent upon water usage, from April through August.

## **2.6 City of North Pole Water Supply**

The City of North Pole samples its water supply wells routinely and analyzes for sulfolane on a semi-annual basis (PWS ID# AK2310675). The City is responsible for submittal of the results to ADEC.

The most currently posted water quality data for the City of North Pole wells can be obtained through the ADEC website:

[http://dec.alaska.gov:8080/DWW/JSP/WaterSystemDetail.jsp?tinwsys\\_is\\_number=3699&tinwsys\\_st\\_code=AK&wsnumber=AK2310675](http://dec.alaska.gov:8080/DWW/JSP/WaterSystemDetail.jsp?tinwsys_is_number=3699&tinwsys_st_code=AK&wsnumber=AK2310675)).

## 3.0 AWS Program Updates

### 3.1 Description of Issues, Problems or Complaints

In the winter of 2015, the fill tube was found to be broken on two bulk water tanks as a result of cold weather. The fill tubes were replaced and reinforced to provide extra support.

In July and August of 2015, discoloration was noted in bulk water at approximately 6 residences. The issues were due to malfunction of the softener utilized by Pioneer Wells. The softener malfunction was quickly resolved when noticed, but the affected homes had received water in which the iron and hardness had not been removed, which created the discoloration. The issues did not create any problems beyond aesthetics. When notified of the issues, FHRA provided temporary bottled water until the bulk water from Pioneer Wells was verified to be free of discoloration. FHRA also collected samples for bacteria analysis to confirm there was not contamination or other changes in water quality.

Several homeowners expressed concern with the volume of water backwashed (in order to remove fine particles and settle the GAC media prior to installation) and discharged to septic tanks during changeout of GAC vessels. This concern was mitigated by AHL performing this step at their own facility prior to delivery and installation of the new GAC vessels starting in 2016.

### 3.2 AWS Program Changes

In 2015, FHRA moved the location of the groundwater office to 1100 H & H Lane in North Pole. The office is located at the entrance to the FHRA North Pole Terminal, and will still allow easy access for affected homeowners as well as the general public. FHRA sent a notice of the office move to all affected homeowners in December 2015 (Attachment A).

FHRA continued evaluation of the sampling program in 2015. One previous change that was re-evaluated was the addition of the C1, D1, C2, and D2 samples, as described in the Alternative Water Solutions Program - 2014 Annual Report (Barr 2015). C2 and D2 samples were collected from sample ports C and D, respectively, following changeout of a GAC vessel. Upon review of the C2 and D2 data collected since adding them to the sampling routine in 2014, FHRA found no detections of sulfolane in the D2 samples and only a limited number of low-level C2 detections that were all below the limit of quantitation, with one exception (PW-0606).<sup>1</sup> Based on these findings, it was determined that the C2 samples were not providing useful data for the monitoring program and future routine collection will be discontinued. D2 samples will continue to be collected following a changeout of a redundant tank, and will be analyzed if there is a detection in the D1 sample.

---

<sup>1</sup> PW-0606 had elevated C2 results in 2015 after the data reporting cutoff date, and thus is not included in Table 3. FHRA's contractors investigated the primary vessel and initial maintenance did not resolve the issue in the C2 sample, so the primary tank was changed out again which mitigated the issue. While the maintenance was being conducted, the redundant tank effectively removed the sulfolane and all final treated water (D samples) had no detections.

---

### **3.3 WQA Certification**

As described in Section 2.3.2 and the AWS-MP, the POE systems are maintained in accordance with a certification through the WQA. This certification has been renewed for 5 years.

---

## 4.0 Summary

In 2015, FHRA provided drinking water to impacted residents and businesses of North Pole through delivery of bottled water (on an interim or long-term basis), delivery of bulk water, and operation of POE treatment systems. The following is a summary of the total volumes of clean water provided by alternative water solutions in 2015:

- 115,065 gallons of bottled water through delivery of bottled water on an interim or long-term basis.
- 3,954,950 gallons of bulk water, including delivery to residences, businesses, a greenhouse, and garden tanks.
- Treatment of approximately 7,750,000 gallons of water through POE treatment systems.

---

## 5.0 References

Alaska Department of Environmental Conservation. 2016. Division of Environmental Health, Drinking Water Program.

[http://dec.alaska.gov:8080/DWW/JSP/WaterSystemDetail.jsp?tinwsys\\_is\\_number=3699&tinwsys\\_st\\_code=AK&wsnumber=AK2310675](http://dec.alaska.gov:8080/DWW/JSP/WaterSystemDetail.jsp?tinwsys_is_number=3699&tinwsys_st_code=AK&wsnumber=AK2310675)

ARCADIS U.S. Inc. (Arcadis) 2016. Second Semiannual 2015 Offsite Groundwater Monitoring Report, North Pole Terminal, Flint Hills Resources Alaska, LLC, January 29, 2016.

Barr Engineering Co. (Barr), 2014. Alternative Water Solutions Program – Management Plan, Flint Hills Resources Alaska, LLC, October 2014.

Barr, 2015. Alternative Water Solutions Program - 2014 Annual Report, Flint Hills Resources Alaska, LLC, February 25, 2015.

## Tables



**Table 1**  
**AWS Installation Summary**  
**Alternative Water Solutions Program - 2015 Annual Report**  
**North Pole, Alaska**

	Number of Solutions per Installation Year						Totals (through 2015)
	2010	2011	2012	2013	2014	2015	
Bulk Water	7	78	18	10	4	--	117
Long-Term Bottled Water	--	24	5	3	1	--	33
POE Treatment System	--	126	28	6	5	--	165
<b>Total AWS</b>							<b>315</b>
Connection to City Water	28	--	--	--	--	--	28
<b>Grand Total</b>							<b>343</b>

Table 2  
2015 Property Transactions  
Alternative Water Solutions Program - 2015 Annual Report  
North Pole, Alaska

	Private Well Identification Number (PW ID #)
1	299
2	301
3	312
4	348
5	393
6	557
7	624
8	990
9	993
10	1109
11	1394

Table 3  
 POE Treatment Systems Analytical Data Summary  
 Alternative Water Solutions Program - 2015 Annual Report  
 North Pole, Alaska

Sample Port		A		C		C1	C2		D	D1	D2	U1-C	U1-C1	U1-C2	U2-C	U2-C1	U2-C2	U3-C	U3-C1	U3-C2	U1-D	U2-D	U3-D	
Duplicates			DUP		DUP			DUP																
PW_ID	Sample Date	Sulfolane (µg/L)																						
0157	10/19/2015	27.5				<2.50	<2.50		<2.50															
	06/16/2015	28.8				<1.00	<1.00	<1.00	<1.00															
	12/29/2014	29.8				<2.40	<2.40		<2.40															
	11/17/2014	37.1				<2.40	<2.40	<2.40	<2.40															
	08/18/2014	44.0	47.8			<2.40	<2.40		<2.40															
	05/23/2014	52.9				<2.00	<2.00		<2.00															
	03/03/2014	53.3	54.1			<3.00	<3.00		<3.00J*															
	11/26/2013	53.6				<3.10	<3.10		<3.10															
	08/30/2013	68.9J*				<3.10J*	<3.10J*		<3.10J*															
	04/05/2013	78.5J*				<3.10J*	<3.10J*		<3.10J*															
	12/19/2012	103JH*				<3.10J*	<3.10J*		<3.10J*															
	07/02/2012	110JL*				<3.10J*	<3.10J*		<3.10J*															
	01/25/2012	114J*				<3.10J*	<3.10J*		<3.10J*															
12/12/2011	115J*					<3.10J*		<3.10J*																
08/17/2011	129J*			3.40J*																				
01/04/2010	95.4	90.6																						
0158	03/27/2015	36.3				<2.40	<2.40	<2.40	<2.40															
	11/14/2014	52.6				<2.40	<2.40		<2.40															
	10/06/2014					<2.40	<2.40																	
	09/15/2014	51.0				<2.40	3.10J		<2.40															
	07/30/2013	94.2J*				<3.10J*	<3.10J*		<3.10J*															
	12/09/2011	202J*				<3.10J*	<3.10J*		<3.10J*															
	07/28/2011	213J*			<3.10J*																			
01/20/2010	217																							
0159	09/28/2015	30.8				<2.50	<2.50	<2.50	<2.50															
	07/28/2015	32.9				<2.50	<2.50	<2.50	<2.50															
	06/01/2015	32.6				<1.00	<1.00	<1.00	<1.00															
	03/30/2015	35.3				<2.40	<2.40	<2.40	<2.40															
	02/02/2015	40.5				<2.40	<2.40	<2.40	<2.40															
	12/02/2014	46.4				<2.40	<2.40	<2.40	<2.40															
	09/30/2014	43.7	44.9			<2.40	<2.40		<2.40															
	08/26/2014	50.7	50.7			<2.40	<2.40		<2.40															
	06/02/2014	71.3	69.7			<2.00	<2.00		<2.00															
	03/14/2014	65.3				<3.00	<3.00		<3.00															
	01/17/2014	81.3	74.8			<3.00	<3.00		<3.00															
	11/19/2013	71.6	66.2			<3.10	<3.10		<3.10															
	09/27/2013	70.0	71.6			<3.10	<3.10		<3.10															
	08/20/2013	77.5J*				<3.10J*	<3.10J*		<3.10J*															
	05/28/2013	96.1J*				<3.10J*	<3.10J*		<3.10J*															
	03/12/2013	119J*				<3.10J*	<3.10J*		<3.10J*															
	12/18/2012	124JH*				<3.10J*	<3.10J*		<3.10J*															
	10/22/2012	115J*				<3.10J*	<3.10J*		<3.10J*															
	08/06/2012	141J*				<3.10J*	<3.10J*		<3.10J*															
	06/11/2012				<3.10					<3.10														
05/25/2012	152J*				<3.10J*	26.4J*		<3.10J*																
02/03/2012	167J*				<3.10J*	<3.10J*		<3.10J*																
07/27/2011	233J*			<3.10J*																				
01/09/2010	255																							

Table 3  
 POE Treatment Systems Analytical Data Summary  
 Alternative Water Solutions Program - 2015 Annual Report  
 North Pole, Alaska

Sample Port	A		C		C1	C2		D	D1	D2	U1-C	U1-C1	U1-C2	U2-C	U2-C1	U2-C2	U3-C	U3-C1	U3-C2	U1-D	U2-D	U3-D	
Duplicates		DUP		DUP			DUP																
PW_ID	Sample Date	Sulfolane (µg/L)																					
0160	08/28/2015	48.8			<2.50	<2.50		<2.50															
	04/13/2015	70.3			<2.40	<2.40		<2.40															
	12/08/2014	78.7			<2.40J*	<2.40		<2.40															
	07/01/2014	157			<2.40	<2.40		<2.40															
	02/03/2014	164			<3.00	<3.00		<3.00															
	04/12/2013	255J*			<3.10J*	<3.10J*		<3.10J*															
	01/25/2012	360J*			<3.10J*	<3.10J*		<3.10J*															
	08/17/2011	326J*		<3.10J*																			
03/12/2011	21.2																						
0161	08/11/2015	50.2			<2.50	<2.50		<2.50															
	05/15/2015	51.9			<1.00	<1.00	<1.00	<1.00															
	02/16/2015	67.2			<2.40	<2.40		<2.40															
	11/04/2014	80.3			<2.40	<2.40		<2.40															
	08/29/2014	84.9	88.1		<2.40	<2.40		<2.40															
	05/30/2014	118	115		<2.00	<2.00		<2.00															
	02/17/2014	129			<3.00	<3.00		<3.00															
	11/22/2013	106	110		<3.10	<3.10		<3.10															
	09/13/2013	110			<3.10	<3.10		<3.10															
	06/14/2013	159J*			<3.10J*	<3.10J*		<3.10J*															
	03/29/2013	191J*			<3.10J*	<3.10J*		<3.10J*															
	01/08/2013	155J*			<3.10J*	<3.10J*		<3.10J*															
	10/16/2012	186J*			<3.10J*	<3.10J*		<3.10J*															
	06/28/2012	223J*			<3.10J*	<3.10J*		<3.10J*															
	03/15/2012	236J*			<3.10J*	<3.10J*		<3.10J*															
11/02/2011	190J*		<3.10J*				<3.10J*																
06/21/2011	254J*		<0.790J*																				
01/23/2010	303	277																					
0162	09/04/2015	34.1			<2.50	<2.50		<2.50															
	12/19/2014	44.5		<2.40					<2.40	<2.40													
	12/08/2014	50.5			12.2	2.50J	<2.40	4.40J															
	10/21/2014	53.2			<2.40	<2.40	<2.40	<2.40															
	03/10/2014	71.2	67.6		<3.00	<3.00		<3.00															
	04/02/2013	102J*			<3.10J*	<3.10J*		<3.10J*															
	12/13/2011	166J*			<3.10J*	<3.10J*		<3.10J*															
	07/18/2011	210J*		<0.790J*																			
02/01/2010	248																						
0164	07/31/2015	46.0			<2.50	<2.50J*		<2.50															
	02/27/2015	60.0			<2.40	<2.40		<2.40															
	08/12/2014	67.7	75.0		<2.40	<2.40		<2.40															
	12/27/2013	97.7	84.9		<3.00	<3.00		<3.00															
	07/26/2013	114J*			<3.10J*	<3.10J*		<3.10J*															
	01/14/2013	143J*			<3.10J*	<3.10J*		<3.10J*															
	08/10/2011	220J*		<3.10J*																			
02/11/2010	255																						

Table 3  
 POE Treatment Systems Analytical Data Summary  
 Alternative Water Solutions Program - 2015 Annual Report  
 North Pole, Alaska

Sample Port	A		C		C1	C2		D	D1	D2	U1-C	U1-C1	U1-C2	U2-C	U2-C1	U2-C2	U3-C	U3-C1	U3-C2	U1-D	U2-D	U3-D	
Duplicates		DUP		DUP			DUP																
PW_ID	Sample Date	Sulfolane (µg/L)																					
0217	10/19/2015	146																					
	08/18/2015	136																					
	05/13/2015	148																					
	03/09/2015	151																					
	01/23/2015	146			<2.40	<2.40	<2.40	<2.40															
	11/12/2014	148																					
	08/26/2014	145	147																				
	05/27/2014	147																					
	03/10/2014	156																					
	03/07/2014	138	150			<3.00	<3.00		<3.00														
	11/19/2013	153																					
	09/05/2013	152																					
	06/05/2013	163																					
		164																					
		05/17/2013	164J*			<3.10J*	<3.10J*		<3.10J*														
		03/11/2013	173																				
		07/18/2012	169J*			<3.10J*	<3.10J*		<3.10J*														
	09/22/2011	211J*																					
	04/14/2011	217JL*		<5.00J*																			
	03/10/2011	154																					
	01/06/2010	108																					
0219	06/23/2015	96.4			<1.00	<1.00		<1.00															
	07/18/2014	136	128		<2.40	<2.40		<2.40															
	07/26/2013	131J*			<3.10J*	<3.10J*		<3.10J*															
	06/28/2012	65.1J*			<3.10J*	<3.10J*		<3.10J*															
	01/06/2010	89.8																					
0221	11/03/2015	110			<2.50	<2.50		<2.50															
	05/18/2015	106			<1.00	<1.00	<1.00	<1.00															
	09/11/2014	129	133		<2.40	<2.40		<2.40															
	03/31/2014	120	126		<2.00	<2.00		<2.00															
	08/13/2013	115J*			<3.10J*	<3.10J*		<3.10J*															
	03/15/2013	155J*			<3.10J*	<3.10J*		<3.10J*															
	07/19/2012	149J*			<3.10J*	<3.10J*		<3.10J*															
	11/04/2011	162J*		<3.10J*																			
	02/04/2010	152																					

Table 3  
 POE Treatment Systems Analytical Data Summary  
 Alternative Water Solutions Program - 2015 Annual Report  
 North Pole, Alaska

Sample Port	A		C		C1	C2		D	D1	D2	U1-C	U1-C1	U1-C2	U2-C	U2-C1	U2-C2	U3-C	U3-C1	U3-C2	U1-D	U2-D	U3-D	
Duplicates		DUP		DUP			DUP																
PW_ID	Sample Date	Sulfolane (µg/L)																					
0225	01/27/2015	19.4			<2.40	<2.40	<2.40	<2.40															
	07/22/2014	23.9	24.2		<2.40	<2.40		<2.40															
	04/14/2014	26.4	26.8		<2.00	<2.00		<2.00															
	01/14/2014	24.4	27.9		<3.00	<3.00		<3.00															
	09/17/2013	28.3	26.8		<3.10	<3.10		<3.10															
	06/14/2013	30.9J*			<3.10J*	<3.10J*		<3.10J*															
	03/08/2013	36.2J*			<3.10J*	<3.10J*		<3.10J*															
	12/17/2012	47.3J*			<3.10J*	<3.10J*		<3.10J*															
	10/08/2012	45.8J*			<3.10J*	<3.10J*		<3.10J*															
	07/12/2012	51.8J*			<3.10J*	<3.10J*		<3.10J*															
	04/23/2012	59.4J*			<3.10J*	<3.10J*		<3.10J*															
	01/25/2012	62.4J*			<3.10J*	<3.10J*		<3.10J*															
11/14/2011	64.9J*		<3.10J*					<3.10J*															
05/23/2011	109J*		<5.00J*																				
11/14/2009	156																						
0232	01/27/2015	90.7			<2.40	<2.40		<2.40															
	04/18/2014	44.6	48.3		<2.00	<2.00		<2.00J*															
	04/29/2013	49.4J*			<3.10J*	<3.10J*		<3.10J*															
	08/30/2012	55.9J*			<3.10J*	<3.10J*		<3.10J*															
	12/02/2011	48.4J*			<3.10J*	<3.10J*		<3.10J*															
	06/24/2011	41.0J*		<0.790J*																			
	02/12/2010	43.7																					
09/04/2015			<2.50																				
0295	07/14/2015	11.1			<1.00	<1.00	2.00J	<1.00															
	11/11/2014	10.1			<2.40	<2.40		<2.40															
	01/20/2014	9.60J	9.20J		<3.00	<3.00		<3.00															
	04/03/2013	9.80J*		<3.10J*																			
	09/21/2012	9.60J*			<3.10J*	<3.10J*		<3.10J*															
	10/21/2011	8.70J*		<3.10J*																			
	08/26/2011	7.89J																					
	04/15/2010	<10.0																					

Table 3  
 POE Treatment Systems Analytical Data Summary  
 Alternative Water Solutions Program - 2015 Annual Report  
 North Pole, Alaska

Sample Port	A		C		C1	C2		D	D1	D2	U1-C	U1-C1	U1-C2	U2-C	U2-C1	U2-C2	U3-C	U3-C1	U3-C2	U1-D	U2-D	U3-D	
Duplicates		DUP		DUP			DUP																
PW_ID	Sample Date	Sulfolane (µg/L)																					
0296	10/19/2015	10.1J																					
	10/12/2015	9.80J			<2.50	<2.50		<2.50															
	08/18/2015	<5.05J*																					
	05/15/2015	11.1			<1.00	<1.00		<1.00															
	05/07/2015	9.54J																					
	02/17/2015	10.3J																					
	11/19/2014	10.4																					
	11/18/2014	11.3			<2.40	<2.40		<2.40															
	06/04/2014	10.4	10.4																				
	03/24/2014	11.6																					
	03/17/2014	11.2	10.1			<3.00	<3.00		<3.00														
	12/04/2013	11.5																					
	11/15/2013	10.6J*	10.5			<3.10	<3.10		<3.10														
	09/12/2013	11.2																					
	07/16/2013	11.6J*				<3.10J*	<3.10J*		<3.10J*														
	06/13/2013	13.4	12.5																				
		12.6																					
	03/21/2013	11.9																					
	01/02/2013	9.60J*				<3.10J*	<3.10J*		<3.10J*														
	08/14/2012	12.5J*				<3.10J*	<3.10J*		<3.10J*														
05/21/2012	10.6J*				<3.10J*	<3.10J*		<3.10J*															
02/13/2012	9.50J*				<3.10J*	<3.10J*		<3.10J*															
09/08/2011	6.90J*		<3.10J*																				
08/05/2011	7.17J																						
03/27/2010	<10.6	<10.6																					
0298	06/29/2015	15.8			<1.00	<1.00	<1.00	<1.00															
	09/16/2014	14.8			<2.40	<2.40		<2.40															
	12/23/2013	11.1	9.90J		<3.00	<3.00		<3.00															
	04/16/2013	10.2J*			<3.10J*	<3.10J*		<3.10J*															
	10/26/2012	8.80J*			<3.10J*	<3.10J*		<3.10J*															
	04/19/2012	7.60J*			<3.10J*	<3.10J*		<3.10J*															
	09/13/2011	8.20J*		<3.10J*																			
	07/26/2011	8.64J																					
	03/07/2011	<10.2																					
03/23/2010	<10.3																						
0299	01/28/2015	15.9	<2.40																				
	09/02/2014	16.4	16.0		<2.40	<2.40		<2.40															
	08/20/2013	8.40J*			<3.10J*	<3.10J*		<3.10J*															
	06/16/2012	8.00J*			<3.10J*	<3.10J*		<3.10J*															
	02/06/2012	7.90J*			<3.10J*	<3.10J*		<3.10J*															
	08/03/2011	<3.10J*		<3.10J*																			
	07/17/2011	7.00J																					
04/15/2010	<10.3																						

Table 3  
 POE Treatment Systems Analytical Data Summary  
 Alternative Water Solutions Program - 2015 Annual Report  
 North Pole, Alaska

Sample Port		A		C		C1	C2		D	D1	D2	U1-C	U1-C1	U1-C2	U2-C	U2-C1	U2-C2	U3-C	U3-C1	U3-C2	U1-D	U2-D	U3-D	
Duplicates			DUP		DUP			DUP																
PW_ID	Sample Date	Sulfolane (µg/L)																						
0300	08/14/2015	23.0				<2.50	<2.50	<2.50	<2.50															
	09/22/2014	17.4				<2.40	<2.40		<2.40															
	02/03/2014	13.5	14.2			<3.00	<3.00		<3.00															
	09/23/2013	12.6	10.0J			<3.10	<3.10		<3.10															
	04/22/2013	10.3J*				<3.10J*	<3.10J*		<3.10J*															
	10/08/2012	9.80J*				<3.10J*	<3.10J*		<3.10J*															
	02/06/2012	8.70J*				<3.10J*	<3.10J*		<3.10J*															
	07/28/2011	9.80J*		<3.10J*																				
07/21/2011	8.26J																							
02/23/2010	<10.9																							
0301	07/31/2015	16.3				<2.50	<2.50		<2.50															
	08/01/2014	14.1	13.2			<2.40	<2.40		<2.40															
	08/26/2013	8.20J*				<3.10J*	<3.10J*		<3.10J*															
	09/26/2012	9.30J*		<3.10J*																				
	08/04/2011	8.64J																						
05/12/2010	<10.4																							
0302	07/20/2015	16.8				<2.50	<2.50		<2.50															
	08/12/2014	13.9	14.3			<2.40	<2.40		<2.40															
	08/27/2013	11.4J*				<3.10J*	<3.10J*		<3.10J*															
	09/18/2012	7.30J*				<3.10J*	<3.10J*		<3.10J*															
	10/26/2011	6.90J*																						
		<3.10J*																						
	09/22/2011	6.90J*																						
08/01/2011	6.77J																							
04/15/2010	<10.9																							
0303	09/21/2015	15.6				<2.50	<2.50		<2.50															
	06/19/2015	15.2				<1.00	<1.00	<1.00	<1.00															
	09/30/2014	15.2				<2.40	<2.40		<2.40															
	02/11/2014	15.0	13.9			<3.00	<3.00J*		<3.00															
	06/24/2013	14.1J*				<3.10J*	<3.10J*		<3.10J*															
	01/15/2013	11.4J*				<3.10J*	<3.10J*		<3.10J*															
	05/25/2012	12.2J*				<3.10J*	<3.10J*		<3.10J*	<3.10J*	<3.10J*													
	02/15/2012	11.2J*				<3.10J*	<3.10J*		<3.10J*															
	08/26/2011	10.8J*		<3.10J*																				
	07/12/2011	12.6																						
03/16/2010	<10.3																							
12/21/2009	<10.3																							
0304	04/17/2015	24.9				<2.40	<2.40	<2.40	<2.40															
	10/10/2014	26.1				<2.40	<2.40		<2.40															
	03/10/2014	22.4	24.6			<3.00	<3.00		<3.00J*															
	08/23/2013	19.6J*				<3.10J*	<3.10J*		<3.10J*															
	11/26/2012	23.4J*				<3.10J*	<3.10J*		<3.10J*															
	04/18/2012	19.7J*		<3.10J*																				
02/26/2010	13.9																							



Table 3  
 POE Treatment Systems Analytical Data Summary  
 Alternative Water Solutions Program - 2015 Annual Report  
 North Pole, Alaska

Sample Port		A		C		C1	C2		D	D1	D2	U1-C	U1-C1	U1-C2	U2-C	U2-C1	U2-C2	U3-C	U3-C1	U3-C2	U1-D	U2-D	U3-D		
Duplicates			DUP		DUP			DUP																	
PW_ID	Sample Date	Sulfolane (µg/L)																							
0305	08/10/2015	22.0				<2.50	<2.50		<2.50																
	05/01/2015	18.9				<2.40	<2.40		<2.40																
	01/05/2015	18.7				<2.40	<2.40		<2.40																
	06/27/2014	22.4				<2.40	<2.40		<2.40																
	02/03/2014	17.5	19.1			<3.00	<3.00		<3.00J*																
	07/16/2013	16.5J*				<3.10J*	<3.10J*		<3.10J*																
	02/01/2013	13.7J*				<3.10J*	<3.10J*		<3.10J*																
	10/26/2012	15.2J*				<3.10J*	<3.10J*		<3.10J*																
	07/13/2012	16.5J*				<3.10J*	<3.10J*		<3.10J*																
	10/05/2011	14.5J*		<3.10J*																					
08/19/2011	16.2																								
05/01/2010	<10.0																								
0307	10/30/2015	25.8				<2.50	<2.50		<2.50																
	08/10/2015	23.1				<2.50	<2.50		<2.50																
	05/12/2015	19.9				<2.40	<2.40		<2.40																
	02/16/2015	18.6				<2.40	<2.40		<2.40																
	11/10/2014	17.8				<2.40	<2.40		<2.40																
	08/08/2014	18.4				<2.40	<2.40		<2.40																
	05/09/2014	17.4				<2.00	<2.00		<2.00																
	01/31/2014	16.7	16.1			<3.00	<3.00		<3.00J*																
	10/14/2013	12.2	12.3			<3.10	<3.10		<3.10																
	07/08/2013	13.5J*				<3.10J*	<3.10J*		<3.10J*																
	03/29/2013	16.8J*				<3.10J*	<3.10J*		<3.10J*																
	12/11/2012	16.5J*				<3.10J*	<3.10J*		<3.10J*																
	08/29/2012	13.7J*				<3.10J*	<3.10J*		<3.10J*																
03/19/2012	13.7J*				<3.10J*	<3.10J*		<3.10J*																	
09/20/2011	11.4J*		<3.10J*																						
07/26/2011	12.3																								
05/05/2010	<10.5																								
0308	03/14/2015	4.90J				<2.40	<2.40	<2.40	<2.40																
	09/26/2014	4.90J	4.80J			<2.40	<2.40		<2.40																
	05/16/2014	3.10J	3.10J			<2.00	<2.00		<2.00																
	08/23/2013	5.50J*				<3.10J*	<3.10J*		<3.10J*																
	03/08/2013	7.20J*				<3.10J*	<3.10J*		<3.10J*																
	09/10/2012	7.20J*				<3.10J*	<3.10J*		<3.10J*																
	05/24/2012	7.10J*		<3.10J*																					
09/16/2011	7.19J																								
04/16/2010	<10.0																								

Table 3  
 POE Treatment Systems Analytical Data Summary  
 Alternative Water Solutions Program - 2015 Annual Report  
 North Pole, Alaska

Sample Port		A		C		C1	C2		D	D1	D2	U1-C	U1-C1	U1-C2	U2-C	U2-C1	U2-C2	U3-C	U3-C1	U3-C2	U1-D	U2-D	U3-D
Duplicates			DUP		DUP			DUP															
PW_ID	Sample Date	Sulfolane (µg/L)																					
0309	03/23/2015	11.4				<2.40	<2.40	<2.40	<2.40														
	06/09/2014	10.5	10.4			<2.40	<2.40		<2.40														
	01/31/2014	9.70J*																					
	11/15/2013	9.70J				<3.10	<3.10		<3.10														
	09/24/2013	8.60J	8.80J			<3.10	<3.10		<3.10														
	07/09/2013			<3.10J*					<3.10J*														
	06/25/2013	10.2JL*				<3.10J*	<3.10J*		<3.10J*														
	04/22/2013	9.00J*				<3.10J*	<3.10J*		<3.10J*														
	01/29/2013	7.60J*				<3.10J*	<3.10J*		<3.10J*														
	11/16/2012	9.90J*				<3.10J*	<3.10J*		<3.10J*														
	06/11/2012	8.40J*				<3.10J*	<3.10J*		<3.10J*														
	04/23/2012	8.70J*				<3.10J*	<3.10J*		<3.10J*														
10/18/2011	7.70J*		<3.10J*																				
08/29/2011	7.28J																						
04/19/2010	<10.0																						
0311	09/11/2015	15.4				<2.50	<2.50	<2.50	<2.50														
	01/19/2015	13.6				<2.40	<2.40	<2.40	<2.40														
	07/28/2014	12.5	12.1					<2.40	<2.40														
	02/28/2014	12.1	12.4			<3.00	<3.00		<3.00														
	10/07/2013	10.0				<3.10	<3.10		<3.10														
	03/04/2013	10.0J*				<3.10J*	<3.10J*		<3.10J*														
	07/11/2012	10.0J*				<3.10J*	<3.10J*		<3.10J*														
	09/09/2011	7.80J*		<3.10J*																			
07/25/2011	7.55J																						
04/19/2010	<10.0																						
0312	01/12/2015	16.6				<2.40	<2.40		<2.40														
	06/27/2014	17.1	15.7			<2.40	<2.40		<2.40														
	02/07/2014	15.2	12.4			<3.00	<3.00		<3.00														
	06/14/2013	12.7J*				<3.10J*	<3.10J*		<3.10J*														
	08/30/2012	12.5J*		<3.10J*																			
	08/31/2011	10.9																					
	03/27/2010	<10.8																					
0347	09/14/2015	<2.50				<2.50	<2.50	<2.50	<2.50														
	01/19/2015	2.90J				<2.40	<2.40		<2.40														
	04/21/2014	<2.00	<2.00			<2.00	<2.00		<2.00														
	07/30/2013	<3.10J*				<3.10J*	<3.10J*		<3.10J*														
	12/03/2012	5.10JH*				<3.10J*	<3.10J*		<3.10J*														
	01/31/2012	6.10J*		<3.10J*																			
	10/28/2011	5.16J																					
02/13/2010	<10.3																						

Table 3  
 POE Treatment Systems Analytical Data Summary  
 Alternative Water Solutions Program - 2015 Annual Report  
 North Pole, Alaska

Sample Port		A		C		C1	C2		D	D1	D2	U1-C	U1-C1	U1-C2	U2-C	U2-C1	U2-C2	U3-C	U3-C1	U3-C2	U1-D	U2-D	U3-D	
Duplicates			DUP		DUP			DUP																
PW_ID	Sample Date	Sulfolane (µg/L)																						
0348	02/27/2015	<2.40				<2.40	<2.40	<2.40	<2.40															
	09/22/2014	<2.40	<2.40			<2.40	<2.40	<2.40	<2.40															
	06/09/2014	<2.40				<2.40	<2.40	<2.40	<2.40															
	01/14/2014	<3.00	<3.00			<3.00	<3.00	<3.00	<3.00															
	09/23/2013	<3.10				<3.10	<3.10	<3.10	<3.10															
	02/26/2013	<3.10J*				<3.10J*	<3.10J*	<3.10J*	<3.10J*															
	07/16/2012	<3.10J*				<3.10J*	<3.10J*	<3.10J*	<3.10J*															
	11/03/2011	<3.10J*		<3.10J*																				
	08/19/2011	3.37J	3.98J																					
02/22/2010	<10.9																							
0364	10/05/2015	<2.50				<2.50	<2.50	<2.50	<2.50															
	04/07/2015	<2.40				<2.40	<2.40	<2.40	<2.40															
	10/17/2014	<2.40				<2.40	<2.40	<2.40	<2.40															
	05/21/2014	<2.00	<2.00			<2.00	<2.00	<2.00	<2.00															
	01/03/2014	<3.00				<3.00	<3.00	<3.00	<3.00															
	09/09/2013	<3.10J*				<3.10J*	<3.10J*	<3.10J*	<3.10J*															
	01/07/2013	<3.10J*				<3.10J*	<3.10J*	<3.10J*	<3.10J*															
	05/07/2012	<3.10J*				<3.10J*	<3.10J*	<3.10J*	<3.10J*															
	08/30/2011	4.60J*		<3.10J*																				
07/22/2011	4.19J																							
02/13/2010	<10.4																							
0365**	09/11/2015	<2.50				<2.50	<2.50	<2.50	<2.50															
	05/22/2015	<1.00				<1.00	<1.00	<1.00	<1.00															
	03/06/2015	<2.40				<2.40	<2.40	<2.40	<2.40															
	12/12/2014	<2.40				<2.40	<2.40	<2.40	<2.40															
	09/22/2014	<2.40				<2.40	<2.40	<2.40	<2.40															
	07/11/2014	<2.40	<2.40			<2.40	<2.40	<2.40	<2.40															
	04/11/2014	<2.00				<2.00	<2.00	<2.00	<2.00															
	12/20/2013	<3.00J*	<3.00J*			<3.00	<3.00	<3.00	<3.00															
	09/20/2013	<3.10	<3.10			<3.10	<3.10	<3.10	<3.10															
	07/02/2013	<3.10J*				<3.10J*	<3.10J*	<3.10J*	<3.10J*															
	04/16/2013	<3.10J*				<3.10J*	<3.10J*	<3.10J*	<3.10J*															
	01/18/2013	<3.10J*				<3.10J*	<3.10J*	<3.10J*	<3.10J*															
	10/23/2012	<3.10J*		<3.10J*																				
08/09/2011	<6.20																							
02/23/2010	<11.0																							

Table 3  
 POE Treatment Systems Analytical Data Summary  
 Alternative Water Solutions Program - 2015 Annual Report  
 North Pole, Alaska

Sample Port	A		C		C1	C2		D	D1	D2	U1-C	U1-C1	U1-C2	U2-C	U2-C1	U2-C2	U3-C	U3-C1	U3-C2	U1-D	U2-D	U3-D	
Duplicates		DUP		DUP			DUP																
PW_ID	Sample Date	Sulfolane (µg/L)																					
0376	07/27/2015	<2.50			<2.50	<2.50	<2.50	<2.50															
	05/05/2015	2.80J			<2.40	<2.40	<2.40	<2.40															
	03/31/2015	<2.40			<2.40	<2.40	<2.40	<2.40															
	12/16/2014	<2.40			<2.40	<2.40		<2.40															
	10/13/2014	<2.40	<2.40		<2.40	<2.40		<2.40															
	08/15/2014	2.50J	2.50J		<2.40	<2.40		<2.40															
	05/02/2014	<2.00	<2.00		<2.00	<2.00		<2.00															
	02/18/2014	<3.00	<3.00		<3.00	<3.00		<3.00															
	01/07/2014	<3.00	3.40JH*		<3.00	<3.00		<3.00															
	11/18/2013	<3.10	<3.10		<3.10	<3.10J*		<3.10															
	09/03/2013	<3.10J*			<3.10J*	<3.10J*		<3.10J*															
	07/18/2013	<3.10J*			<3.10J*			<3.10J*															
	05/06/2013	<3.10J*			<3.10J*	<3.10J*		<3.10J*															
	03/18/2013	<3.10J*			<3.10J*	<3.10J*		<3.10J*															
	01/25/2013	<3.10J*			<3.10J*	<3.10J*		<3.10J*															
	11/16/2012	<3.10J*			<3.10J*	<3.10J*		<3.10J*															
	07/09/2012	<3.10J*			<3.10J*	<3.10J*		<3.10J*															
	04/10/2012	<3.10J*			<3.10J*	<3.10J*		<3.10J*															
10/05/2011	<3.10J*		<3.10J*																				
05/26/2011	4.49J																						
02/16/2010	<10.3																						
0377	07/27/2015	4.20J			<2.50	<2.50		<2.50															
	05/05/2015	5.70J			<2.40	<2.40		<2.40															
	01/30/2015	6.00J			<2.40	<2.40	<2.40	<2.40															
	10/13/2014	5.20J			<2.40	<2.40		<2.40															
	06/09/2014	6.40J			<2.40	<2.40		<2.40															
	05/02/2014	6.90J			<2.00	<2.00J*		<2.00															
	03/17/2014	7.10J	5.60J		<3.00	<3.00		<3.00J*															
	11/18/2013	6.00J	6.60J		<3.10	<3.10		<3.10															
	09/03/2013	9.00JL*			<3.10J*	<3.10J*		<3.10J*															
	05/06/2013	8.70J*			<3.10J*	<3.10J*		<3.10J*															
	12/18/2012	16.8JH*			<3.10J*	<3.10J*		<3.10J*															
	08/30/2012	9.10J*			<3.10J*	<3.10J*		<3.10J*															
	04/02/2012	10.8J*			<3.10J*	<3.10J*		<3.10J*															
	12/20/2011	10.3J*			<3.10J*	<3.10J*		<3.10J*															
	08/12/2011	12.5J*		<3.10J*																			
02/16/2010	11.9																						

Table 3  
 POE Treatment Systems Analytical Data Summary  
 Alternative Water Solutions Program - 2015 Annual Report  
 North Pole, Alaska

Sample Port		A		C		C1	C2		D	D1	D2	U1-C	U1-C1	U1-C2	U2-C	U2-C1	U2-C2	U3-C	U3-C1	U3-C2	U1-D	U2-D	U3-D	
Duplicates			DUP		DUP			DUP																
PW_ID	Sample Date	Sulfolane (µg/L)																						
0378	09/22/2015	3.20J				<2.50	<2.50	<2.50	<2.50															
	07/27/2015	3.40J				<2.50	<2.50		<2.50															
	05/05/2015	<2.40				<2.40	<2.40		<2.40															
	03/03/2015	3.60J				<2.40	<2.40	<2.40	<2.40															
	12/16/2014	3.80J				<2.40	<2.40	<2.40	<2.40															
	08/29/2014	4.10J				<2.40	<2.40		<2.40															
	06/10/2014	<2.40				<2.40	<2.40		<2.40															
	05/02/2014	4.00J	4.00J			<2.00	<2.00		<2.00															
	02/18/2014	<3.00				<3.00	<3.00		<3.00															
	11/18/2013	4.00J				<3.10	<3.10		<3.10															
	09/03/2013	<3.10J*				<3.10J*	<3.10J*		<3.10J*															
	07/18/2013	4.50J*				<3.10J*	<3.10J*		<3.10J*															
	04/05/2013	5.60J*				<3.10J*	<3.10J*		<3.10J*															
	12/03/2012	6.40JH*				<3.10J*	<3.10J*		<3.10J*															
07/09/2012	6.40J*				<3.10J*	<3.10J*		<3.10J*																
12/19/2011	7.00J*		<3.10J*																					
06/16/2011	7.65J																							
0390	05/22/2015	9.10J				<1.00	<1.00	<1.00	<1.00															
	07/25/2014	7.10J	7.30J			<2.40	<2.40		<2.40															
	09/17/2013	8.30J				<3.10	<3.10		<3.10															
	06/05/2013	9.70J*				<3.10J*	<3.10J*		<3.10J*															
	03/11/2013	9.00J*				<3.10J*	<3.10J*		<3.10J*															
	01/22/2013	7.20J*				<3.10J*	<3.10J*		<3.10J*															
	07/13/2012	8.60J*				<3.10J*	<3.10J*		<3.10J*															
	12/09/2011	6.30J*		<3.10J*																				
	10/15/2011	7.25J																						
	02/25/2010	<10.9																						
0391	01/30/2015	4.50J				<2.40	<2.40		<2.40															
	02/28/2014	<3.00	<3.00			<3.00	<3.00		<3.00															
	07/25/2013	3.80J*		<3.10J*																				
	05/29/2012	<6.20																						
	07/22/2011	<6.20																						
	02/27/2010	<10.9																						
0393	08/25/2014	27.0				<2.40	<2.40		<2.40															
	09/13/2013	19.9J*				<3.10J*	<3.10J*		<3.10J*															
	04/15/2013	19.5J*				<3.10J*	<3.10J*		<3.10J*															
	11/13/2012	19.0J*				<3.10J*	<3.10J*		<3.10J*															
	06/07/2012	16.6J*				<3.10J*	<3.10J*		<3.10J*															
	11/04/2011	14.2J*		<3.10J*																				
	09/08/2011	14.8	14.9																					
02/17/2010	<10.4																							
0394	08/21/2015	15.8				<2.50	<2.50	<2.50	<2.50															
	09/16/2014	15.4	15.1			<2.40	<2.40		<2.40															
	08/06/2013	11.8J*				<3.10J*	<3.10J*		<3.10J*															
	08/07/2012	12.3J*				<3.10J*	<3.10J*		<3.10J*															
	12/27/2011	9.10J*		<3.10J*																				
	11/04/2011	9.88J																						
04/21/2010	<10.4																							

Table 3  
 POE Treatment Systems Analytical Data Summary  
 Alternative Water Solutions Program - 2015 Annual Report  
 North Pole, Alaska

Sample Port		A		C		C1	C2		D	D1	D2	U1-C	U1-C1	U1-C2	U2-C	U2-C1	U2-C2	U3-C	U3-C1	U3-C2	U1-D	U2-D	U3-D	
Duplicates			DUP		DUP			DUP																
PW_ID	Sample Date	Sulfolane (µg/L)																						
0439	10/05/2015	21.6				<2.50	<2.50		<2.50															
	07/14/2015	20.2				<1.00	1.10J		<1.00															
	01/12/2015	16.9				<2.40	<2.40		<2.40															
	08/08/2014	21.7	22.1			<2.40	<2.40		<2.40															
	02/10/2014	14.3JL*				<3.00J*	<3.00J*		<3.00J*															
	09/30/2013	14.7	14.9			<3.10	<3.10		<3.10															
	06/05/2013	13.6J*				<3.10J*	<3.10J*		<3.10J*															
	01/29/2013	11.9J*				<3.10J*	<3.10J*		<3.10J*															
	10/16/2012	14.7J*				<3.10J*	<3.10J*		<3.10J*															
	06/11/2012	14.6J*				<3.10J*	<3.10J*		<3.10J*															
	09/20/2011	14.3J*			<3.10J*																			
06/08/2011	10.6																							
02/11/2010	<10.3																							
0442	08/03/2015	36.7				3.80J	<2.50	<2.50	<2.50															
	11/24/2014	39.3				<2.40	<2.40	<2.40		<2.40														
	02/07/2014	32.8	34.8			<3.00	<3.00		<3.00															
	07/09/2013	27.4J*				<3.10J*			<3.10J*															
	06/25/2013	31.5J*				<3.10J*	<3.10J*		<3.10J*															
	09/12/2012	27.3J*				<3.10J*	<3.10J*		<3.10J*															
	06/16/2011	19.2J*			<0.790J*																			
	02/13/2010	14.3																						
0453	10/19/2015	59.4				3.60J	<2.50	<2.50	<2.50															
	04/17/2015			<2.40																				
	04/03/2015	56.1				<2.40	4.00J	4.80J	<2.40															
	11/18/2014					<2.40																		
	10/20/2014	62.8				<2.40	2.80J	2.80J	<2.40															
	01/07/2014	74.2				<3.00	<3.00		<3.00															
	05/13/2013	55.8J*				4.90J*	<3.10J*		<3.10J*															
	10/22/2012	47.7J*				<3.10J*	<3.10J*		<3.10J*															
	04/23/2012	50.0J*				<3.10J*	<3.10J*		<3.10J*															
	11/15/2011	37.1J*							17.3J*															
04/27/2011	38.0J*			<3.10J*	<5.00J*																			
02/08/2010	12.2																							
0454	07/14/2015			<1.00																				
	06/15/2015	50.3				<1.00	2.30J	2.80J	<1.00		<1.00J*													
	07/25/2014	52.7JL*				<2.40	<2.40		<2.40															
	08/09/2013	38.9J*				<3.10J*	<3.10J*		<3.10J*															
	11/15/2011	38.8J*			<3.10J*				<3.10J*															
	04/29/2011	43.2J*			<5.00J*																			
02/08/2010	21.9																							

Table 3  
 POE Treatment Systems Analytical Data Summary  
 Alternative Water Solutions Program - 2015 Annual Report  
 North Pole, Alaska

Sample Port		A		C		C1	C2		D	D1	D2	U1-C	U1-C1	U1-C2	U2-C	U2-C1	U2-C2	U3-C	U3-C1	U3-C2	U1-D	U2-D	U3-D	
Duplicates			DUP		DUP			DUP																
PW_ID	Sample Date	Sulfolane (µg/L)																						
0456	10/16/2015	3.70J				<2.50	<2.50	<2.50	<2.50															
	06/23/2015			<1.00																				
	06/12/2015	9.20J				<1.00	2.30J		<1.00															
	02/03/2015	13.2				<2.40	<2.40		<2.40															
	10/03/2014	3.60J				<2.40	<2.40		<2.40															
	06/30/2014	6.10J				<2.40	<2.40		<2.40															
	03/17/2014	14.9				<3.00	<3.00		<3.00															
	01/03/2014	12.4	7.00J*			<3.00	<3.00J*		<3.00															
	09/02/2013	11.4JL*				<3.10J*	<3.10J*		<3.10J*															
	05/14/2013	15.5J*		<3.10J*																				
07/18/2011	9.17J																							
02/10/2010	<10.6																							
0463	10/31/2015	65.5																						
	09/15/2015	67.0				8.50J	<2.50	<2.50	<2.50															
	09/01/2015	62.7																						
	05/13/2015	54.8	55.9																					
	05/04/2015	50.8				<2.40	<2.40	<2.40	<2.40															
	02/25/2015	48.7																						
	01/09/2015	47.6				<2.40	<2.40		<2.40															
	11/11/2014	49.2																						
	09/09/2014	45.0																						
	08/15/2014	44.2				<2.40	<2.40		<2.40															
	05/29/2014	40.4																						
	03/28/2014	39.9	32.7			<2.00	<2.00		<2.00															
	03/11/2014	36.2																						
	12/16/2013	33.0				<3.10	<3.10		<3.10															
	11/25/2013	39.4																						
	09/12/2013	34.7																						
	08/16/2013	26.6J*				<3.10J*	<3.10J*		<3.10J*															
	06/27/2013	33.2																						
		33.3																						
	04/08/2013	29.0J*				<3.10J*	<3.10J*		<3.10J*															
04/04/2013	27.9																							
12/14/2012	35.1J*				<3.10J*	<3.10J*		<3.10J*																
08/17/2012	29.4J*				<3.10J*	<3.10J*		<3.10J*																
03/15/2012	27.1J*				<3.10J*	<3.10J*		<3.10J*																
11/28/2011	26.7J*		<3.10J*					<3.10J*																
05/18/2011	25.8J*		<5.00J*																					
02/10/2010	25.1																							

Table 3  
 POE Treatment Systems Analytical Data Summary  
 Alternative Water Solutions Program - 2015 Annual Report  
 North Pole, Alaska

Sample Port		A		C		C1	C2		D	D1	D2	U1-C	U1-C1	U1-C2	U2-C	U2-C1	U2-C2	U3-C	U3-C1	U3-C2	U1-D	U2-D	U3-D	
Duplicates			DUP		DUP			DUP																
PW_ID	Sample Date	Sulfolane (µg/L)																						
0466	10/29/2015	30.5																						
	08/13/2015	30.4																						
	07/13/2015			<1.00																				
	06/12/2015	28.4				<1.00	1.40J*	2.00J*	<1.00		<1.00													
	05/07/2015	31.4																						
	02/17/2015	33.6	37.6																					
	11/12/2014	32.8																						
	09/11/2014	33.2	33.3			<2.40	<2.40		<2.40															
	09/10/2014	31.1																						
	06/19/2014	30.4	31.4																					
	03/11/2014	33.0																						
	12/16/2013	31.4																						
	11/01/2013	25.9	26.8			<3.10	<3.10		<3.10															
	09/09/2013	29.5	29.0																					
	06/12/2013	26.8																						
	26.6																							
04/18/2013	23.1	23.9																						
10/17/2012	20.6J*		<3.10J*																					
09/07/2011	14.4																							
02/09/2010	<10.7																							
0480	09/28/2015	44.9				<2.50	<2.50		<2.50															
	08/29/2014	63.9				<2.40	<2.40		<2.40															
	07/23/2013	83.5J*				<3.10J*	<3.10J*		<3.10J*															
	07/10/2012	116J*				<3.10J*	<3.10J*		<3.10J*															
	03/19/2012	111J*				<3.10J*	<3.10J*		<3.10J*															
	09/26/2011	115J*		<3.10J*																				
02/03/2010	78.7																							
0483	10/26/2015	35.1				<2.50	<2.50		<2.50															
	05/19/2014	61.7	61.0			<2.00	<2.00		<2.00															
	08/16/2013	69.7J*				<3.10J*	<3.10J*		<3.10J*															
	07/10/2012	122J*				<3.10J*	<3.10J*		<3.10J*															
	09/22/2011	118J*							<3.10J*															
	04/05/2011	159		<5.00																				
01/23/2010	114																							
0484	10/06/2015	32.7				<2.50	<2.50	<2.50	<2.50															
	08/07/2015	34.0				<2.50	<2.50	<2.50	<2.50															
	04/27/2015	29.7				<2.40	<2.40	<2.40	<2.40															
	01/06/2015	37.6				<2.40	<2.40		<2.40															
	09/12/2014	47.0	50.4			<2.40	<2.40		<2.40															
	06/13/2014	59.0				<2.40	<2.40		<2.40															
	02/17/2014	66.1	61.5			<3.00	<3.00		<3.00J*															
	11/04/2013	61.3	62.4			<3.10	<3.10		<3.10															
	08/05/2013	56.7J*				<3.10J*	<3.10J*		<3.10J*															
	05/10/2013	75.2J*				<3.10J*	<3.10J*		<3.10J*															
	12/11/2012	106J*				<3.10J*	<3.10J*		<3.10J*															
	07/12/2012	108J*					3.20J*	<3.10J*		<3.10J*														
	12/21/2011	106J*					<3.10J*	<3.10J*		<3.10J*														
08/24/2011	110J*		<3.10J*																					
02/03/2010	85.8																							



Table 3  
 POE Treatment Systems Analytical Data Summary  
 Alternative Water Solutions Program - 2015 Annual Report  
 North Pole, Alaska

Sample Port	A		C		C1	C2		D	D1	D2	U1-C	U1-C1	U1-C2	U2-C	U2-C1	U2-C2	U3-C	U3-C1	U3-C2	U1-D	U2-D	U3-D	
Duplicates		DUP		DUP			DUP																
PW_ID	Sample Date	Sulfolane (µg/L)																					
0487	10/27/2015	47.6			<2.50	<2.50	<2.50	<2.50															
	07/10/2015	53.9			<1.00	<1.00	<1.00	<1.00															
	01/16/2015	62.4			<2.40	<2.40		<2.40															
	07/07/2014	81.5	87.7		<2.40	<2.40		<2.40															
	02/11/2014			<3.00																			
	01/20/2014	97.0			<3.00	3.20J		<3.00															
	06/25/2013	112JL*			<3.10J*	<3.10J*		<3.10J*															
	09/21/2012	139J*			<3.10J*	<3.10J*		<3.10J*															
	11/16/2011	153J*		<3.10J*				<3.10J*															
04/05/2011	187		<5.00																				
01/27/2010	138																						
0488	08/25/2015	48.9			<2.50	<2.50		<2.50															
	09/15/2014	93.3	96.1	<2.40																			
	06/14/2012	102J*			<3.10J*	<3.10J*		<3.10J*															
	09/23/2011	103J*						<3.10J*															
	04/15/2011	178J*		<5.00J*																			
01/27/2010	96.2																						
0489	07/17/2015	63.4			<2.50	<2.50	<2.50	<2.50															
	08/01/2014	93.8			<2.40	<2.40		<2.40															
	07/30/2013	122J*			<3.10J*	<3.10J*		<3.10J*															
	12/14/2011	167J*			<3.10J*	<3.10J*		<3.10J*															
	07/08/2011	177J*		<0.790J*																			
01/27/2010	113																						
0498	04/24/2015	71.1			<2.40	<2.40	<2.40	<2.40															
	08/01/2014	99.1	96.8		<2.40	<2.40		<2.40															
	05/27/2014	100			<2.00	<2.00		<2.00															
	06/14/2013	128J*			<3.10J*	<3.10J*		<3.10J*															
	12/15/2011	160J*			<3.10J*	<3.10J*		<3.10J*															
	07/08/2011	157J*		<0.790J*																			
01/27/2010	108																						
0502	08/07/2015	34.9			<2.50	<2.50		<2.50															
	08/04/2014	52.5	50.6		<2.40	<2.40		<2.40															
	09/06/2013	60.6J*			<3.10J*	<3.10J*		<3.10J*															
	09/28/2012	101J*			<3.10J*	<3.10J*		<3.10J*															
	11/14/2011	96.3J*		<3.10J*																			
0503	09/22/2015	78.0			<2.50	<2.50		<2.50															
	06/08/2015	66.0			<1.00	<1.00	<1.00	<1.00															
	02/02/2015	75.5			<2.40	<2.40		<2.40															
	09/12/2014	85.0	86.4		<2.40	<2.40		<2.40															
	06/06/2014	97.3			<2.00	<2.00		<2.00															
	12/30/2013	89.2	81.0		<3.00	<3.00		<3.00															
	09/27/2013	80.3			<3.10	<3.10		<3.10															
	09/12/2012	110J*			<3.10J*	<3.10J*		<3.10J*															
09/12/2011	82.8J*		<3.10J*				<3.10J*																
03/09/2010	56.1																						

Table 3  
 POE Treatment Systems Analytical Data Summary  
 Alternative Water Solutions Program - 2015 Annual Report  
 North Pole, Alaska

Sample Port		A		C		C1	C2		D	D1	D2	U1-C	U1-C1	U1-C2	U2-C	U2-C1	U2-C2	U3-C	U3-C1	U3-C2	U1-D	U2-D	U3-D	
Duplicates			DUP		DUP			DUP																
PW_ID	Sample Date	Sulfolane (µg/L)																						
0504	12/08/2014	48.5J*				<2.40J*	<2.40		<2.40															
	05/09/2014	55.1	55.2			<2.00	<2.00		<2.00															
	09/20/2013	54.9	54.2			<3.10J*	<3.10		<3.10															
	09/05/2012	76.2J*				<3.10J*	<3.10J*		<3.10J*															
	12/30/2011	94.6J*				<3.10J*	<3.10J*		<3.10J*															
	06/16/2011	103J*			<0.790J*																			
01/07/2010	65.3																							
0506**	09/15/2015	107				<2.50	<2.50		<2.50															
	10/03/2014	97.3	97.9			<2.40	<2.40		<2.40															
	02/01/2012	116J*				<3.10J*	<3.10J*		<3.10J*															
	08/02/2011	124J*			<3.10J*																			
03/21/2011	94.2																							
0511**	09/29/2015	4.80J										<2.50	<2.50		<2.50	<2.50		<2.50	<2.50	<2.50	<2.50	<2.50	<2.50	<2.50
	07/24/2015	4.00J										<2.50	<2.50		<2.50	<2.50		<2.50	<2.50	<2.50	<2.50	<2.50	<2.50	
	04/07/2015	4.20J										<2.40	<2.40		<2.40	<2.40		<2.40	<2.40	<2.40	<2.40	<2.40	<2.40	
	09/29/2014	4.40J										<2.40	<2.40		<2.40	<2.40		<2.40	<2.40	<2.40	<2.40	<2.40	<2.40	
	05/30/2014	<2.00										<2.00	<2.00		<2.00	<2.00		<2.00	<2.00	<2.00	<2.00	<2.00	<2.00	
	11/01/2013	<3.10										<3.10	<3.10		<3.10	<3.10		<3.10	<3.10	<3.10	<3.10	<3.10	<3.10	
	08/02/2013	<3.10J*										<3.10J*	<3.10J*		<3.10J*	<3.10J*		<3.10J*	<3.10J*	<3.10J*	<3.10J*	<3.10J*	<3.10J*	
	07/26/2013	<3.10J*										<3.10J*	<3.10J*		<3.10J*	<3.10J*		<3.10J*	<3.10J*	<3.10J*	<3.10J*	<3.10J*	<3.10J*	
	07/02/2013	<3.10J*										<3.10J*	<3.10J*		<3.10J*	<3.10J*		<3.10J*	<3.10J*	<3.10J*	<3.10J*	<3.10J*	<3.10J*	
	06/10/2013	<3.10J*										<3.10J*	<3.10J*		<3.10J*	<3.10J*		<3.10J*	<3.10J*	<3.10J*	<3.10J*	<3.10J*	<3.10J*	
	05/07/2013	<3.10J*										<3.10J*	<3.10J*		<3.10J*	<3.10J*		<3.10J*	<3.10J*	<3.10J*	<3.10J*	<3.10J*	<3.10	
	04/12/2013	<3.10J*										<3.10J*	<3.10J*		<3.10J*	<3.10J*		<3.10J*	<3.10J*	<3.10J*	<3.10J*	<3.10J*	<3.10J*	
	03/15/2013	<3.10J*										<3.10J*	<3.10J*		<3.10J*	<3.10J*		<3.10J*	<3.10J*	<3.10J*	<3.10J*	<3.10J*	<3.10J*	
	02/15/2013	<3.10J*										<3.10J*	<3.10J*		<3.10J*	<3.10J*		<3.10J*	<3.10J*	<3.10J*	<3.10J*	<3.10J*	<3.10J*	
	01/18/2013	<3.10J*										<3.10J*	<3.10J*		<3.10J*	<3.10J*		<3.10J*	<3.10J*	<3.10J*	<3.10J*	<3.10J*	<3.10J*	
	12/10/2012	<3.10J*										<3.10J*	<3.10J*		<3.10J*	<3.10J*		<3.10J*	<3.10J*	<3.10J*	<3.10J*	<3.10J*	<3.10J*	
	10/22/2012	3.90J*										<3.10J*	<3.10J*		<3.10J*	<3.10J*		<3.10J*	<3.10J*	<3.10J*	<3.10J*	<3.10J*	<3.10J*	
08/11/2011	4.07J	4.27J									<3.10J*	<3.10J*		<3.10J*	<3.10J*		<3.10J*	<3.10J*	<3.10J*	<3.10J*	<3.10J*	<3.10J*		
02/23/2010	<10.6																							
0514	06/26/2015	10.5				<1.00	<1.00	<1.00	<1.00															
	04/13/2015	8.20J				<2.40	<2.40	<2.40	<2.40															
	12/30/2014	5.50J				<2.40	<2.40	<2.40	<2.40															
	08/19/2014	9.80JL*	10.3JL*			<2.40J*	<2.40J*	<2.40J*	<2.40J*															
	05/06/2014	6.80J*	6.20J			<2.00	<2.00	<2.00	<2.00															
	01/20/2014	<3.00X*	6.50J			<3.00	6.40X*	<3.00	<3.00															
	10/22/2013	5.20J				<3.10	<3.10	<3.10	<3.10															
	07/30/2013	4.90J*				<3.10J*	<3.10J*	<3.10J*	<3.10J*															
	06/21/2013	3.90J*				<3.10J*	<3.10J*	<3.10J*	<3.10J*															
	04/12/2013	<3.10J*				<3.10J*	<3.10J*	<3.10J*	<3.10J*															
	01/15/2013	6.50J*				<3.10J*	<3.10J*	<3.10J*	<3.10J*															
	10/23/2012	6.80J*				<3.10J*	<3.10J*	<3.10J*	<3.10J*															
	07/18/2012	6.60J*				<3.10J*	<3.10J*	<3.10J*	<3.10J*															
	04/09/2012	5.40J*				<3.10J*	<3.10J*	<3.10J*	<3.10J*															
	08/19/2011	6.60J*			<3.10J*																			
07/21/2011	7.42J																							
04/15/2010	<10.4																							

Table 3  
 POE Treatment Systems Analytical Data Summary  
 Alternative Water Solutions Program - 2015 Annual Report  
 North Pole, Alaska

Sample Port		A		C		C1	C2		D	D1	D2	U1-C	U1-C1	U1-C2	U2-C	U2-C1	U2-C2	U3-C	U3-C1	U3-C2	U1-D	U2-D	U3-D	
Duplicates			DUP		DUP			DUP																
PW_ID	Sample Date	Sulfolane (µg/L)																						
0515	02/13/2015	5.90J				<2.40	<2.40	<2.40	<2.40															
	06/02/2014	3.80J				<2.00	<2.00		<2.00															
	10/21/2013	4.00J				<3.10	<3.10		<3.10															
	04/08/2013	<3.10J*				<3.10J*	<3.10J*		<3.10J*															
	08/08/2012	6.60J*				<3.10J*	<3.10J*		<3.10J*															
	02/01/2012	8.10J*				<3.10J*	<3.10J*		<3.10J*															
	08/19/2011	7.80J*			<3.10J*																			
	07/18/2011	6.74J																						
04/13/2010	<10.0	<10.0																						
0542	07/21/2015	20.3				<2.50	<2.50	<2.50	<2.50															
	02/10/2015	18.1				<2.40	<2.40	<2.40	<2.40															
	07/14/2014	20.7	19.5			<2.40	<2.40		<2.40															
	01/27/2014	15.2	17.0			<3.00	<3.00		<3.00															
	07/29/2013	18.1J*				<3.10J*	<3.10J*		<3.10J*															
	02/05/2013	17.1J*				<3.10J*	<3.10J*		<3.10J*															
	08/30/2012	16.5J*				<3.10J*	<3.10J*		<3.10J*															
	02/15/2012	14.7J*				<3.10J*	<3.10J*		<3.10J*															
	08/01/2011	15.7J*			<3.10J*																			
04/09/2010	11.3																							
0544	09/14/2015	15.5				<2.50	<2.50		<2.50															
	07/06/2015			<1.00																				
	06/02/2015	14.2				<1.00	1.50J		<1.00															
	01/23/2015	16.3				<2.40	<2.40		<2.40															
	09/19/2014	15.4	15.4			<2.40	<2.40		<2.40															
	05/19/2014	15.1				<2.00	<2.00		<2.00															
	01/17/2014	16.2				<3.00	<3.00		<3.00															
	08/19/2013	20.2J*				<3.10J*	<3.10J*		<3.10J*															
	04/01/2013	15.4J*				<3.10J*	<3.10J*		<3.10J*															
	10/19/2012	13.6J*				<3.10J*	<3.10J*		<3.10J*															
	05/22/2012	12.1J*			<3.10J*																			
04/30/2012	12.0J*				<3.10J*	<3.10J*		<3.10J*																
12/02/2011	11.5J*			<3.10J*																				
06/06/2011	8.65J																							
04/18/2010	<10.0																							
0550	10/27/2015	25.3				2.60J	<2.50		<2.50															
	05/08/2015	19.6				<2.40	<2.40		<2.40															
	11/03/2014					<2.40	<2.40																	
	10/10/2014	18.5	18.1			<2.40	4.10J		<2.40															
	12/20/2013	14.1				<3.00	<3.00		<3.00															
	07/09/2013	17.4J*				<3.10J*	<3.10J*		<3.10J*															
	01/16/2013	12.8J*				<3.10J*	<3.10J*		<3.10J*															
	04/03/2012	14.9J*				<3.10J*	<3.10J*		<3.10J*															
	09/06/2011	13.8J*			<3.10J*																			
04/10/2010	13.4																							

Table 3  
 POE Treatment Systems Analytical Data Summary  
 Alternative Water Solutions Program - 2015 Annual Report  
 North Pole, Alaska

Sample Port		A		C		C1	C2		D	D1	D2	U1-C	U1-C1	U1-C2	U2-C	U2-C1	U2-C2	U3-C	U3-C1	U3-C2	U1-D	U2-D	U3-D	
Duplicates			DUP		DUP			DUP																
PW_ID	Sample Date	Sulfolane (µg/L)																						
0553	10/13/2015	18.3				<2.50	<2.50		<2.50															
	07/10/2015	21.2				<1.00	1.70J		<1.00															
	02/10/2015	19.0				<2.40	<2.40		<2.40															
	09/23/2014	19.7	19.6			<2.40	<2.40		<2.40															
	06/20/2014	21.5	21.1			<2.40	<2.40		<2.40															
	02/25/2014	19.2				<3.00	<3.00		<3.00															
	11/05/2013	18.3	17.5			<3.10	<3.10		<3.10															
	06/10/2013	17.9J*				<3.10J*	<3.10J*		<3.10J*															
	01/03/2013	16.2J*				<3.10J*	<3.10J*		<3.10J*															
	10/12/2012	19.6J*				<3.10J*	<3.10J*		<3.10J*															
	07/24/2012	20.2J*				<3.10J*	<3.10J*		<3.10J*															
	05/04/2012	18.0J*				<3.10J*	<3.10J*		<3.10J*															
	01/23/2012	18.6J*				<3.10J*	<3.10J*		<3.10J*															
08/02/2011	18.6J*		<3.10J*																					
06/10/2011	18.3																							
04/10/2010	<10.4																							
0554	02/24/2015	16.6				<2.40	<2.40	<2.40	<2.40															
	04/15/2014	14.0	17.9			<2.00	<2.00		<2.00															
	05/31/2013	14.2J*				<3.10J*	<3.10J*		<3.10J*															
	06/19/2012	16.5J*		<3.10J*																				
	07/08/2011	14.0																						
04/17/2010	<10.0																							
0556	09/18/2015	7.90J				<2.50	<2.50		<2.50															
	06/26/2015	6.40J				<1.00	<1.00		<1.00															
	04/14/2015	6.70J				<2.40	<2.40	<2.40	<2.40															
	02/20/2015	6.80J				<2.40	<2.40	<2.40	<2.40															
	12/02/2014	8.00J				<2.40	<2.40		<2.40															
	05/06/2014	5.00J				<2.00	<2.00		<2.00															
	03/07/2014	6.80J				<3.00	<3.00		<3.00															
	11/19/2013	5.80J				<3.10	<3.10		<3.10															
	07/26/2013	5.00J*				<3.10J*	<3.10J*		<3.10J*															
	04/16/2013	5.00J*				<3.10J*	<3.10J*		<3.10J*															
	01/07/2013	5.80J*				<3.10J*	<3.10J*		<3.10J*															
	10/19/2012	7.40J*				<3.10J*	<3.10J*		<3.10J*															
	07/16/2012	8.10J*				<3.10J*	<3.10J*		<3.10J*															
03/15/2012	7.50J*		<3.10J*																					
09/02/2011	8.02J																							
04/15/2010	<10.4																							
0557	08/17/2015	17.9				<2.50	<2.50		<2.50															
	04/20/2015	14.9				<2.40	<2.40	<2.40	<2.40															
	11/11/2014	17.0				<2.40	<2.40		<2.40															
	06/10/2014	14.0	15.4			<2.40	<2.40		<2.40															
	12/30/2013	12.2				<3.00	<3.00		<3.00															
	05/31/2013	11.1J*				<3.10J*	<3.10J*		<3.10J*															
	11/27/2012	17.8J*				<3.10J*	<3.10J*		<3.10J*															
	02/22/2012	13.1J*				<3.10J*	<3.10J*		<3.10J*															
	08/05/2011	14.9JL*		<3.10J*																				
07/08/2011	12.9																							
09/29/2010	<11.1																							

Table 3  
 POE Treatment Systems Analytical Data Summary  
 Alternative Water Solutions Program - 2015 Annual Report  
 North Pole, Alaska

Sample Port		A		C		C1	C2		D	D1	D2	U1-C	U1-C1	U1-C2	U2-C	U2-C1	U2-C2	U3-C	U3-C1	U3-C2	U1-D	U2-D	U3-D	
Duplicates			DUP		DUP			DUP																
PW_ID	Sample Date	Sulfolane (µg/L)																						
0558	06/16/2015			<1.00																				
	05/29/2015	17.2				<1.00	2.50J	2.50J	<1.00															
	12/01/2014	20.7				<2.40	<2.40		<2.40															
	05/09/2014	20.5	20.1			<2.00	<2.00		<2.00															
	07/29/2013	18.6J*				<3.10J*	<3.10J*		<3.10J*															
	01/14/2013	17.2J*				<3.10J*	<3.10J*		<3.10J*															
	02/20/2012	16.5J*				<3.10J*	<3.10J*		<3.10J*															
	08/08/2011	19.5J*			<3.10J*																			
04/14/2010	11.5																							
0559	10/19/2015	19.5				<2.50	<2.50		<2.50															
	08/11/2015	19.7				<2.50	<2.50		<2.50															
	03/20/2015	16.7				<2.40	<2.40	<2.40	<2.40															
	12/15/2014	19.3				<2.40	<2.40		<2.40															
	09/05/2014	18.8	16.8			<2.40	<2.40		<2.40															
	05/23/2014	15.8	16.0			<2.00	<2.00		<2.00															
	01/13/2014	15.3				<3.00	<3.00		<3.00															
	08/26/2013	12.5J*				<3.10J*	<3.10J*		<3.10J*															
	04/29/2013	16.1J*				<3.10J*	<3.10J*		<3.10J*															
	12/17/2012	16.7J*				<3.10J*	<3.10J*		<3.10J*															
	08/08/2012	15.4J*				<3.10J*	<3.10J*		<3.10J*															
	03/15/2012	14.0J*				<3.10J*	<3.10J*		<3.10J*															
	11/28/2011	13.4J*			<3.10J*					<3.10J*														
	06/06/2011	13.0J*			<0.790J*																			
04/15/2010	13.4																							
0560	06/16/2015			<1.00																				
	05/29/2015	28.0				<1.00	2.20J		<1.00															
	12/15/2014	24.5				<2.40	<2.40	<2.40	<2.40															
	07/07/2014	23.0				<2.40	<2.40		<2.40															
	01/27/2014	18.5				<3.00	<3.00		<3.00															
	08/20/2013	18.4J*				<3.10J*	<3.10J*		<3.10J*															
	03/08/2013	18.6J*				<3.10J*	<3.10J*		<3.10J*															
	10/05/2012	15.8J*				<3.10J*	<3.10J*		<3.10J*															
	04/24/2012	19.8J*				<3.10J*	<3.10J*		<3.10J*															
	11/14/2011	13.7J*			<3.10J*					<3.10J*														
	04/25/2011	20.5J*			<5.00J*																			
04/14/2010	12.4																							
0561	06/26/2015	36.2				<1.00	<1.00		<1.00															
	01/26/2015	36.6				<2.40	<2.40	<2.40	<2.40															
	04/04/2014	28.1				<2.00	<2.00		<2.00															
	12/27/2013	27.1				<3.00	<3.00		<3.00															
	09/02/2013	25.1JL*				<3.10J*	<3.10J*		<3.10J*															
	05/24/2013	23.1J*				<3.10J*	<3.10J*		<3.10J*															
	01/30/2013	21.3J*				<3.10J*	<3.10J*		<3.10J*															
	10/30/2012	24.3J*				<3.10J*	<3.10J*		<3.10J*															
	05/16/2012	24.0J*				<3.10J*	<3.10J*		<3.10J*															
	10/31/2011	<3.10J*			<3.10J*					<3.10J*														
	05/11/2011	20.0J*			<5.00J*																			
04/24/2010	17.8																							

Table 3  
 POE Treatment Systems Analytical Data Summary  
 Alternative Water Solutions Program - 2015 Annual Report  
 North Pole, Alaska

Sample Port		A		C		C1	C2		D	D1	D2	U1-C	U1-C1	U1-C2	U2-C	U2-C1	U2-C2	U3-C	U3-C1	U3-C2	U1-D	U2-D	U3-D	
Duplicates			DUP		DUP			DUP																
PW_ID	Sample Date	Sulfolane (µg/L)																						
0562	04/21/2015	14.9				<2.40	<2.40	<2.40	<2.40															
	05/12/2014	16.7				<2.00	<2.00		<2.00															
	05/03/2013	18.7J*				<3.10J*	<3.10J*		<3.10J*															
	06/07/2011	14.1J*		<0.790J*																				
	04/14/2010	11.1																						
0563	10/05/2015	14.8				<2.50	<2.50	<2.50	<2.50															
	06/29/2015	16.2				<1.00	<1.00		<1.00															
	02/24/2015	16.4				<2.40	<2.40		<2.40															
	10/28/2014	17.5				<2.40	<2.40	<2.40	<2.40															
	06/03/2014	18.0	18.3			<2.40	<2.40		<2.40															
	12/09/2013	15.4	15.3			<3.10	<3.10		<3.10															
	05/28/2013	18.7J*		<3.10J*																				
	09/01/2011	17.9																						
04/18/2010	<10.6																							
0564	09/08/2015	21.2				<2.50J*	<2.50		<2.50															
	04/06/2015	14.8				<2.40	<2.40		<2.40															
	10/31/2014	21.7		<2.40																				
	05/16/2014	9.00J				<2.00	<2.00		<2.00															
	11/15/2013	11.8	12.1			<3.10	<3.10		<3.10															
	04/01/2013	14.6J*				<3.10J*	<3.10J*		<3.10J*															
	08/20/2012	18.4J*				<3.10J*	<3.10J*		<3.10J*															
	11/28/2011	15.6J*		<3.10J*					<3.10J*															
06/07/2011	14.1J*		<0.790J*																					
04/14/2010	11.4	11.2																						
0565	09/21/2015	8.90J				<2.50	<2.50		<2.50															
	10/27/2014	8.30J				<2.40	<2.40	<2.40	<2.40															
	04/28/2014	2.90JH*	<2.00			<2.00	<2.00		<2.00															
	08/12/2013	4.70J*				<3.10J*	<3.10J*		<3.10J*															
	11/30/2012	9.30JH*		<3.10J*																				
	02/17/2012	5.50J*				<3.10J*	<3.10J*		<3.10J*															
	08/12/2011	7.90J*		<3.10J*																				
	07/09/2011	7.49J																						
04/16/2010	<10.4	<10.0																						
0566	07/21/2015	16.5				<2.50	<2.50		<2.50															
	05/01/2015	11.0				<2.40	<2.40	<2.40	<2.40															
	01/23/2015	12.5				<2.40	<2.40		<2.40															
	10/03/2014	19.5	20.0			<2.40	<2.40		<2.40															
	06/23/2014	12.5	12.6			<2.40	<2.40		<2.40															
	01/28/2014	12.5	11.8			<3.00	<3.00		<3.00															
	09/02/2013	13.3JL*				<3.10J*	<3.10J*		<3.10J*															
	04/23/2013	7.40J*				<3.10J*	<3.10J*		<3.10J*															
	12/18/2012	16.4JH*				<3.10J*	<3.10J*		<3.10J*															
	08/06/2012	14.9J*				<3.10J*	<3.10J*		<3.10J*															
	06/07/2012	10.7J*				<3.10J*	<3.10J*		<3.10J*															
	03/16/2012	10.3J*				<3.10J*	<3.10J*		<3.10J*															
	12/20/2011	12.4J*				<3.10J*	<3.10J*		<3.10J*															
	08/31/2011	16.7J*		<3.10J*																				
	07/08/2011	12.3	12.1																					
04/07/2010	<10.5																							

Table 3  
 POE Treatment Systems Analytical Data Summary  
 Alternative Water Solutions Program - 2015 Annual Report  
 North Pole, Alaska

Sample Port	A		C		C1	C2		D	D1	D2	U1-C	U1-C1	U1-C2	U2-C	U2-C1	U2-C2	U3-C	U3-C1	U3-C2	U1-D	U2-D	U3-D	
Duplicates		DUP		DUP			DUP																
PW_ID	Sample Date	Sulfolane (µg/L)																					
0567	06/22/2015	8.20J			<1.00	<1.00		<1.00															
	01/06/2015	7.90J			<2.40	<2.40	<2.40	<2.40															
	07/29/2014	9.80J	9.00J		<2.40	<2.40		<2.40															
	01/06/2014	7.80J	8.00J		<3.00	<3.00		<3.00															
	08/06/2013	5.10J*			<3.10J*	<3.10J*		<3.10J*															
	04/02/2013	4.40J*			<3.10J*	<3.10J*		<3.10J*															
	09/10/2012	9.40J*			<3.10J*	<3.10J*		<3.10J*															
	02/20/2012	7.50J*			<3.10J*	<3.10J*		<3.10J*															
	08/18/2011	8.90J*		<3.10J*																			
	07/08/2011	8.09J																					
04/07/2010	<10.6																						
0568	10/06/2015	13.1			<2.50	<2.50		<2.50															
	04/27/2015	13.7			<2.40	<2.40		<2.40															
	11/18/2014	15.5			<2.40	<2.40		<2.40															
	09/05/2014	17.6			<2.40	<2.40		<2.40															
	06/20/2014	18.8			<2.40	<2.40		<2.40															
	04/14/2014	15.9	15.8		<2.00	<2.00		<2.00															
	04/19/2013	14.6J*			<3.10J*	<3.10J*		<3.10J*															
	06/14/2012	19.6J*			<3.10J*	<3.10J*		<3.10J*															
	02/02/2012	17.0J*			<3.10J*	<3.10J*		<3.10J*															
	07/29/2011	20.1J*		<3.10J*																			
04/24/2010	13.0	16.1																					
0570	08/10/2015	17.8			<2.50	<2.50		<2.50															
	08/22/2014	19.1			<2.40	<2.40		<2.40															
	05/02/2014	15.0			<2.00	<2.00		<2.00															
	05/14/2013	13.6J*			<3.10J*	<3.10J*		<3.10J*															
	09/12/2012	13.8J*			<3.10J*	<3.10J*		<3.10J*															
	12/07/2011	11.7J*			<3.10J*	<3.10J*		<3.10J*															
	05/31/2011	14.8J*		<5.00J*																			
	05/18/2011	14.4J*		14.0J*																			
	01/23/2010	10.6																					
	0586	09/14/2015	16.1			<2.50	<2.50		<2.50														
05/22/2015		13.8			<1.00	<1.00		<1.00															
12/30/2014		9.70J			<2.40	<2.40		<2.40															
08/19/2014		12.6JL*			<2.40J*	<2.40J*		<2.40J*															
05/23/2014		11.1	10.2		<2.00	<2.00		<2.00															
01/28/2014		<3.00			<3.00	<3.00		<3.00															
10/22/2013		8.00J	8.20J		<3.10	<3.10		<3.10															
05/20/2013		9.10J*			<3.10J*	<3.10J*		<3.10J*															
01/28/2013		7.30J*			<3.10J*	<3.10J*		<3.10J*															
08/14/2012		8.40J*			<3.10J*	<3.10J*		<3.10J*															
03/16/2012		8.20J*			<3.10J*	<3.10J*		<3.10J*															
10/11/2011		6.40J*		<3.10J*																			
08/19/2011		7.97J																					
04/17/2010	<10.0																						

Table 3  
 POE Treatment Systems Analytical Data Summary  
 Alternative Water Solutions Program - 2015 Annual Report  
 North Pole, Alaska

Sample Port		A		C		C1	C2		D	D1	D2	U1-C	U1-C1	U1-C2	U2-C	U2-C1	U2-C2	U3-C	U3-C1	U3-C2	U1-D	U2-D	U3-D	
Duplicates			DUP		DUP			DUP																
PW_ID	Sample Date	Sulfolane (µg/L)																						
0597**	09/04/2015	72.6				<2.50	3.10J	3.00J	<2.50															
	07/30/2015	67.6		<2.50					<2.50		<2.50													
	07/24/2015	68.5				4.80J	4.10J	4.30J	10.1															
	07/10/2015					4.50J	4.30J																	
	06/26/2015			3.30J																				
	06/08/2015	57.6				5.30J	2.70J		<1.00															
	04/27/2015			<2.40																				
	04/13/2015	55.6				<2.40	3.60J	4.20J	<2.40															
	01/13/2015	72.5				<2.40	<2.40	<2.40	<2.40															
	10/28/2014					<2.40	<2.40																	
	09/19/2014	82.8				<2.40	3.90J		<2.40															
	07/22/2014	90.5				5.80J	<2.40		<2.40															
	06/06/2014	89.7	88.0			<2.00	<2.00		<2.00															
	01/21/2014	89.8	91.6			<3.00	<3.00	<3.00	<3.00															
	12/31/2013	89.4		<3.00					<3.00															
	08/06/2013	70.7J*				<3.10J*	<3.10J*		<3.10J*															
	06/27/2013	96.5JL*		<3.10J*					<3.10J*															
	06/06/2013	88.3J*				6.80J*	<3.10J*		<3.10J*															
12/07/2012	123J*				<3.10J*	<3.10J*		<3.10J*																
07/16/2012	111J*				<3.10J*	<3.10J*		<3.10J*																
10/26/2011	95.5J*		<3.10J*																					
12/30/2009	49.7																							
0598	10/05/2015	122				<2.50	<2.50		<2.50															
	02/23/2015	139				<2.40	<2.40		<2.40															
	08/04/2014	149				<2.40	<2.40		<2.40															
	08/12/2013	135J*				<3.10J*	<3.10J*		<3.10J*															
	11/27/2012	192J*				<3.10J*	<3.10J*		<3.10J*															
	06/08/2012	241																						
	04/10/2012	182J*				<3.10J*	<3.10J*		<3.10J*															
	10/05/2011	183J*		<3.10J*					<3.10J*															
	04/15/2011	206J*		<5.00J*																				
01/07/2010	140																							
0599	07/28/2015	125				<2.50	<2.50		<2.50															
	08/18/2014	116				<2.40	<2.40		<2.40															
	03/14/2014	153	142			<3.00	<3.00		<3.00															
	10/25/2013	140	135			<3.10	<3.10		<3.10															
	06/10/2013	148J*				<3.10J*	<3.10J*		<3.10J*															
	07/03/2012	241JL*		<3.10J*																				
0606	06/08/2015			<1.00					<1.00															
	05/19/2015	59.8				2.20J	1.10J	1.60J	<1.00		<1.00J*													
	09/15/2014	66.4		<2.40					<2.40															
	08/18/2014	70.7				4.40J	4.80J		<2.40															
	12/03/2013	62.5				<3.10	<3.10		<3.10															
	08/20/2013	70.1J*				<3.10J*	<3.10J*		<3.10J*															
	12/26/2012	58.9J*				<3.10J*	<3.10J*		<3.10J*															
	07/10/2012	70.6J*				<3.10J*	<3.10J*		<3.10J*															
	12/13/2011	58.0J*				<3.10J*	<3.10J*		<3.10J*															
07/13/2011	55.8J*		<0.790J*																					
02/28/2010	27.3																							



Table 3  
 POE Treatment Systems Analytical Data Summary  
 Alternative Water Solutions Program - 2015 Annual Report  
 North Pole, Alaska

Sample Port	A		C		C1	C2		D	D1	D2	U1-C	U1-C1	U1-C2	U2-C	U2-C1	U2-C2	U3-C	U3-C1	U3-C2	U1-D	U2-D	U3-D	
Duplicates		DUP		DUP			DUP																
PW_ID	Sample Date	Sulfolane (µg/L)																					
0607	01/13/2015	103			<2.40	<2.40		<2.40															
	11/04/2014	110			<2.40	<2.40		<2.40															
	09/23/2014	116			<2.40	<2.40		<2.40															
	07/14/2014	147	136		<2.40	<2.40		<2.40															
	05/15/2014	184	191		<2.00	<2.00		<2.00															
	02/18/2014	216	210J*		<3.00	<3.00		<3.00															
	12/13/2013	152	158		<3.10	<3.10		<3.10															
	03/11/2013	225J*			<3.10J*	<3.10J*		<3.10J*															
	09/15/2012	221J*			<3.10J*	<3.10J*		<3.10J*															
	03/27/2012	249J*		<3.10J*																			
02/01/2010	169	134																					
08/28/2015	86.8				2.70J	2.70J	3.20J	<2.50															
05/22/2015			<1.00																				
04/07/2015	79.8JL*				<2.40	5.20J		<2.40															
03/23/2015					<2.40	2.70J																	
03/13/2015					<2.40	10.3																	
03/06/2015	79.6				<2.40	4.10J		<2.40															
10/31/2014	86.1				<2.40	<2.40	<2.40	<2.40															
07/08/2014	96.0				<2.40	<2.40		<2.40															
03/14/2014	89.4	100			<3.00	<3.00		<3.00															
10/21/2013	87.3	88.5			<3.10	<3.10		<3.10															
06/19/2013	104J*				<3.10J*	<3.10J*		<3.10J*															
01/14/2013	91.7J*				<3.10J*	<3.10J*		<3.10J*															
05/21/2012	108J*				<3.10J*	<3.10J*		<3.10J*															
03/07/2012	97.2J*				4.70J*	<3.10J*		<3.10J*															
08/16/2011	87.6J*		<3.10J*																				
03/07/2010	57.8																						
06/19/2015	66.2				<1.00	6.60J		<1.00															
08/29/2014					<2.40	<2.40																	
07/21/2014	84.3	82.4			<2.40	4.70J		<2.40															
08/19/2013	82.7JL*				<3.10J*	<3.10		<3.10															
09/05/2012	99.5J*				<3.10J*	<3.10J*		<3.10J*															
06/11/2012	94.0J*				<3.10J*	<3.10J*		<3.10J*															
03/12/2012	104J*				<3.10J*	<3.10J*		<3.10J*															
09/16/2011	71.1J*		<3.10J*																				
08/11/2015	29.0				<2.50	<2.50	<2.50	<2.50															
08/25/2014	32.8	31.7			<2.40	<2.40		<2.40															
08/16/2013	28.4J*				<3.10J*	<3.10J*		<3.10J*															
11/30/2012	37.0JH*				<3.10J*	<3.10J*		<3.10J*															
11/28/2011	31.8J*		<3.10J*					<3.10J*															
06/01/2011	30.0J*		<0.790J*																				
03/07/2010	24.3																						

Table 3  
 POE Treatment Systems Analytical Data Summary  
 Alternative Water Solutions Program - 2015 Annual Report  
 North Pole, Alaska

Sample Port		A		C		C1	C2		D	D1	D2	U1-C	U1-C1	U1-C2	U2-C	U2-C1	U2-C2	U3-C	U3-C1	U3-C2	U1-D	U2-D	U3-D	
Duplicates			DUP		DUP			DUP																
PW_ID	Sample Date	Sulfolane (µg/L)																						
0615	08/10/2015	91.1				<2.50	<2.50	<2.50	<2.50															
	01/02/2015	105				<2.40	<2.40	<2.40	<2.40															
	07/11/2014	114	122			<2.40	<2.40		<2.40															
	02/14/2014	148				<3.00	<3.00		<3.00															
	10/14/2013	115				<3.10	<3.10		<3.10															
	05/03/2013	142J*				<3.10J*	<3.10J*		<3.10J*															
	12/19/2012	176JH*				<3.10J*	<3.10J*		<3.10J*															
	08/17/2012	143J*				<3.10J*	<3.10J*		<3.10J*															
	03/16/2012	126J*				<3.10J*	<3.10J*		<3.10J*															
	09/30/2011	121J*			<3.10J*																			
	04/28/2011	116J*			<10.0J*																			
03/29/2011	120J*																							
03/04/2010	65.3	60.5																						
0617	06/02/2015	118				<1.00	<1.00		<1.00															
	08/22/2014	146				<2.40	<2.40		<2.40															
	10/15/2013	143				<3.10	<3.10		<3.10															
	11/09/2012	168J*				<3.10J*	<3.10J*		<3.10J*															
	02/07/2012	145J*				<3.10J*	<3.10J*		<3.10J*															
	07/20/2011	144J*			<3.10J*																			
03/04/2010	56.4																							
07/24/2015				<2.50																				
0618	07/13/2015	50.6				2.60J	1.20J		<1.00															
	03/09/2015	14.9				<2.40	<2.40		<2.40															
	11/17/2014	40.9				<2.40	<2.40		<2.40															
	07/21/2014	56.7				<2.40	<2.40		<2.40															
	02/14/2014	10.2	9.70J			<3.00J*	<3.00		<3.00															
	09/16/2013	33.7				<3.10	<3.10		<3.10															
	05/03/2013	36.6J*				<3.10J*	<3.10J*		<3.10J*															
	11/02/2012	25.6J*				<3.10J*	<3.10J*		<3.10J*															
	05/21/2012	48.2J*			<3.10J*																			
	04/27/2012	39.0J*				<3.10J*	<3.10J*		<3.10J*															
	11/17/2011	16.0J*			<3.10J*																			
05/19/2011	43.8J*			<5.00J*																				
02/22/2010	29.5																							
0620	11/03/2015	111				<2.50	<2.50		<2.50															
	06/22/2015	76.0				<1.00	<1.00		<1.00															
	12/19/2014	86.4				<2.40	<2.40	<2.40	<2.40															
	04/07/2014	92.8	93.0			<2.00	<2.00		<2.00															
	12/13/2013	99.8				<3.10	<3.10		<3.10															
	09/09/2013	89.5J*				<3.10J*	<3.10J*		<3.10J*															
	03/29/2013	94.8J*				<3.10J*	<3.10J*		<3.10J*															
	08/20/2012	66.4J*				<3.10J*	<3.10J*		<3.10J*															
	05/25/2012	58.5J*			<3.10J*																			
	04/30/2012	56.8J*				<3.10J*	<3.10J*		<3.10J*															
	12/13/2011	49.2J*				<3.10J*	<3.10J*		<3.10J*															
06/13/2011	46.0J*			<0.790J*																				
03/08/2010	33.3																							

Table 3  
 POE Treatment Systems Analytical Data Summary  
 Alternative Water Solutions Program - 2015 Annual Report  
 North Pole, Alaska

Sample Port		A		C		C1	C2		D	D1	D2	U1-C	U1-C1	U1-C2	U2-C	U2-C1	U2-C2	U3-C	U3-C1	U3-C2	U1-D	U2-D	U3-D	
Duplicates			DUP		DUP			DUP																
PW_ID	Sample Date	Sulfolane (µg/L)																						
0622	10/05/2015	7.10J				<2.50	<2.50		<2.50															
	07/13/2015	5.40J				<1.00	<1.00		<1.00															
	05/11/2015	5.20J				<2.40	<2.40	<2.40	<2.40															
	03/02/2015	3.00J				<2.40	<2.40	<2.40	<2.40															
	12/22/2014	7.20J				<2.40	<2.40	<2.40	<2.40															
	10/20/2014	7.40J				<2.40	<2.40	<2.40	<2.40															
	08/22/2014	7.90J	8.00J			<2.40	<2.40		<2.40															
	07/01/2014	7.20J	7.20J			<2.40	<2.40		<2.40															
	04/18/2014	<2.00				<2.00	<2.00		<2.00															
	02/04/2014	<3.00	<3.00			<3.00	<3.00		<3.00J*															
	11/25/2013	6.80J	6.60J			<3.10	<3.10		<3.10															
	09/23/2013	7.90J	8.30J			<3.10	<3.10		<3.10															
	07/15/2013	8.20J*				<3.10J*	<3.10J*		<3.10J*															
	04/29/2013	6.30J*				<3.10J*	<3.10J*		<3.10J*															
	01/08/2013	<3.10J*				<3.10J*	<3.10		<3.10J*															
	11/16/2012	8.80J*				<3.10J*	<3.10J*		<3.10J*															
	09/04/2012	11.2J*				<3.10J*	<3.10J*		<3.10J*															
	06/07/2012	9.60J*				<3.10J*	<3.10J*		<3.10J*															
02/20/2012	6.40J*				<3.10J*	<3.10J*		<3.10J*																
10/13/2011	9.40J*			<3.10J*																				
08/19/2011	11.4																							
01/14/2010	<10.6J*																							
01/04/2010	<10.5																							
0624†	11/18/2014	38.1				<2.40	<2.40	<2.40	<2.40															
	04/22/2014	26.1	23.7			<2.00	<2.00		<2.00															
	07/08/2013	31.3J*				<3.10J*	<3.10J*		<3.10J*															
	09/28/2012	35.7J*				<3.10J*	<3.10J*		<3.10J*															
	05/16/2012	32.6J*			<3.10J*																			
	04/27/2012	35.1J*				<3.10J*	<3.10J*		<3.10J*															
	10/25/2011	28.9J*			<3.10J*				<3.10J*															
0625†	05/05/2011	29.0J*			<5.00J*																			
	03/05/2010	16.2																						
	03/28/2014	23.0			<2.00																			
	12/14/2012	32.5J*				<3.10J*	<3.10J*		<3.10J*															
0625†	10/27/2011				<3.10				<3.10															
	05/10/2011	23.0J*			<5.00J*																			
	03/06/2010	20.1																						
0636	09/18/2015	112				<2.50	<2.50	<2.50	<2.50															
	05/08/2015	124				<2.40	<2.40	<2.40	<2.40															
	10/14/2014	147	146			<2.40	<2.40	<2.40	<2.40															
	06/03/2014	186				<2.40	<2.40		<2.40															
	08/12/2013	153J*				<3.10J*	<3.10J*		<3.10J*															
	11/26/2012	198J*				<3.10J*	<3.10J*		<3.10J*															
	04/24/2012	181J*				<3.10J*	<3.10J*		<3.10J*															
	10/11/2011	158J*			<3.10J*																			
	04/26/2011	190J*			<5.00J*																			
0636	04/21/2011	180J*			<5.00J*																			
	12/17/2009	153JL*	139JL*																					

Table 3  
 POE Treatment Systems Analytical Data Summary  
 Alternative Water Solutions Program - 2015 Annual Report  
 North Pole, Alaska

Sample Port		A		C		C1	C2		D	D1	D2	U1-C	U1-C1	U1-C2	U2-C	U2-C1	U2-C2	U3-C	U3-C1	U3-C2	U1-D	U2-D	U3-D	
Duplicates			DUP		DUP			DUP																
PW_ID	Sample Date	Sulfolane (µg/L)																						
0646	08/04/2015	20.2				<2.50	<2.50	<2.50	<2.50															
	01/30/2015	24.9				<2.40	<2.40		<2.40															
	05/16/2014	24.6	31.7			<2.00	<2.00		<2.00															
	08/19/2013	65.0J*				<3.10J*	<3.10J*		<3.10J*															
	12/19/2012	87.2JH*				<3.10J*	<3.10J*		<3.10J*															
	05/29/2012	87.6J*				<3.10J*	<3.10J*		<3.10J*															
	01/27/2012	81.5J*				<3.10J*	<3.10J*		<3.10J*															
	05/03/2011	84.0J*			<5.00J*																			
02/13/2010	49.9																							
0647	10/16/2015	104				<2.50	<2.50		<2.50															
	08/21/2015	97.2				<2.50	<2.50		<2.50															
	05/19/2015	78.0				2.40J	<1.00		<1.00															
	01/12/2015	91.9				<2.40	<2.40	<2.40	<2.40															
	09/08/2014	92.3				<2.40	<2.40		<2.40															
	04/04/2014	62.2	69.7			<2.00	<2.00		<2.00															
	11/12/2013	60.4	61.0			<3.10	<3.10		<3.10															
	07/15/2013						<3.10J*																	
	06/21/2013	53.9J*				<3.10J*	22.4J*		<3.10J*															
	02/01/2013	43.8J*			<3.10J*																			
	08/06/2012	43.1J*					<3.10J*	<3.10J*		<3.10J*														
	12/07/2011	35.7J*					<3.10J*	<3.10J*		<3.10J*														
05/12/2011	28.1J*			<5.00J*																				
02/07/2010	22.4																							
0648	10/13/2015	106				<2.50	3.10J	3.90J	<2.50															
	09/08/2015	99.7				<2.50	<2.50		<2.50															
	06/23/2015	97.2				<1.00	2.80J	2.90J	<1.00															
	04/28/2015				<2.40																			
	04/13/2015	90.7				<2.40	5.10J		<2.40															
	01/09/2015					<2.40	<2.40		<2.40		<2.40													
	12/09/2014	108				<2.40	8.20J	7.90J	<2.40		<2.40													
	09/05/2014					<2.40	<2.40																	
	06/30/2014	116	114			<10.0	3.70J		<10.0															
	11/22/2013	87.3				<3.10	3.30J		<3.10															
	04/19/2013	87.4J*					<3.10J*	<3.10J*		<3.10J*														
	12/11/2012	97.6J*					<3.10J*	<3.10J*		<3.10J*														
	08/29/2012	93.9J*					<3.10J*	<3.10J*		<3.10J*														
	04/24/2012	76.7J*					<3.10J*	<3.10J*		<3.10J*														
12/08/2011	62.7J*					<3.10J*	<3.10J*		<3.10J*															
07/12/2011	63.7J*			<0.790J*																				
02/09/2010	42.4																							
0649	08/25/2015	60.5				<2.50	<2.50	<2.50	<2.50															
	09/11/2014	55.6				<2.40	<2.40		<2.40															
	11/11/2013	42.6	41.9			<3.10	<3.10		<3.10															
	01/21/2013	31.4J*				<3.10J*	<3.10J*		<3.10J*															
	03/14/2012	30.5J*				<3.10J*	<3.10J*		<3.10J*															
	08/11/2011	23.4J*			<3.10J*																			
	03/12/2011	11.8																						
02/07/2010	<10.9																							

Table 3  
 POE Treatment Systems Analytical Data Summary  
 Alternative Water Solutions Program - 2015 Annual Report  
 North Pole, Alaska

Sample Port		A		C		C1	C2		D	D1	D2	U1-C	U1-C1	U1-C2	U2-C	U2-C1	U2-C2	U3-C	U3-C1	U3-C2	U1-D	U2-D	U3-D	
Duplicates			DUP		DUP			DUP																
PW_ID	Sample Date	Sulfolane (µg/L)																						
0651	09/14/2015	97.8				<2.50	<2.50		<2.50															
	12/02/2014	93.9				4.10J	<2.40		<2.40															
	06/17/2014	107	106			3.70J	<2.40		<2.40															
	06/10/2013	52.1J*				<3.10J*	<3.10J*		<3.10J*															
	11/15/2011	68.4J*		<3.10J*																				
01/14/2010	36.9JL*																							
0653	09/21/2015	102				<2.50	<2.50	<2.50	<2.50															
	02/17/2015	97.7				<2.40	<2.40	<2.40	<2.40															
	08/22/2014	103	106			<2.40	<2.40		<2.40															
	12/16/2013	87.0		<3.10																				
	01/16/2010	33.8	33.9																					
0656	11/25/2014	103				<2.40J*	<2.40	<2.40	<2.40															
	11/11/2013	97.8				<3.10	<3.10		<3.10															
	11/28/2011	82.5J*		<3.10J*																				
	02/07/2010	47.0																						
0657	11/02/2015	94.6				<2.50	<2.50		<2.50															
	08/04/2015	96.0				<2.50	<2.50		<2.50															
	05/19/2015								<2.40															
	05/12/2015	75.1				<2.40	<2.40	<2.40	<2.40															
	01/09/2015	100				<2.40	<2.40	<2.40	<2.40															
	09/12/2014	100				<2.40	<2.40		<2.40															
	06/13/2014	99.1JH*	102			<2.40	<2.40		<2.40															
	03/04/2014	86.7				<3.00	<3.00		<3.00															
	12/09/2013	73.9				<3.10	<3.10		<3.10															
	10/18/2013	72.5	74.6			<3.10	<3.10		<3.10															
	07/15/2013	81.2J*				<3.10J*	<3.10J*		<3.10J*															
	04/19/2013	81.1J*				<3.10J*	<3.10J*		<3.10J*															
	01/02/2013	70.0J*				<3.10J*	<3.10J*		<3.10J*															
	10/12/2012	73.8J*				<3.10J*	<3.10J*		<3.10J*															
	07/09/2012	74.8J*				<3.10J*	<3.10J*		<3.10J*															
02/17/2012	56.0J*		<3.10J*																					
11/22/2009	39.4																							

Table 3  
 POE Treatment Systems Analytical Data Summary  
 Alternative Water Solutions Program - 2015 Annual Report  
 North Pole, Alaska

Sample Port		A		C		C1	C2		D	D1	D2	U1-C	U1-C1	U1-C2	U2-C	U2-C1	U2-C2	U3-C	U3-C1	U3-C2	U1-D	U2-D	U3-D	
Duplicates			DUP		DUP			DUP																
PW_ID	Sample Date	Sulfolane (µg/L)																						
0658	10/29/2015	55.8																						
	08/18/2015	61.0JL*																						
	05/05/2015	61.3																						
	03/17/2015	53.1				<2.40	<2.40	<2.40	<2.40															
	02/12/2015	56.3																						
	11/11/2014	60.8																						
	08/19/2014	63.4																						
	06/06/2014	65.1	63.5			<2.00	<2.00		<2.00															
	05/28/2014	59.4																						
	03/19/2014	58.4																						
	12/03/2013	57.0																						
	09/11/2013	63.7																						
	06/21/2013	62.0J*				<3.10J*	<3.10J*		<3.10J*															
	06/12/2013	51.1																						
		54.0																						
	03/18/2013	48.4																						
09/18/2012	61.6J*				<3.10J*	<3.10J*		<3.10J*																
12/06/2011	58.3J*				<10.0J*	<10.0J*		<10.0J*																
06/14/2011	51.8J*		<0.790J*																					
02/07/2010	39.0																							
0660	09/22/2015	71.0			<2.50	4.80J		<2.50																
	07/31/2015	75.7			3.20J	<2.50	<2.50	<2.50																
	05/22/2015		<1.00																					
	05/01/2015	70.6			<2.40	2.70J		<2.40																
	02/06/2015	74.5			<2.40	<2.40	<2.40	<2.40																
	09/23/2014				<2.40	<2.40																		
	07/29/2014	88.7			<2.40	4.90J		<2.40																
	05/27/2014	85.4	88.5		<2.00	<2.00		<2.00																
	11/26/2013	86.4	81.5		<3.10	<3.10		<3.10																
	07/09/2013	92.5J*			<3.10J*	<3.10J*		<3.10J*																
	02/26/2013	95.0J*			<3.10J*	<3.10J*		<3.10J*																
	09/04/2012	121J*			<3.10J*	<3.10J*		<3.10J*																
	04/20/2012	115J*			<3.10J*	4.00J*		<3.10J*																
	11/01/2011	107J*		<3.10J*				<3.10J*																
05/18/2011	107J*		<5.00J*																					
12/03/2009	45.5																							
0754†	05/31/2012	3.55J																						
	07/25/2011	<6.20																						
	11/19/2010	<10.3	<10.6																					

Table 3  
 POE Treatment Systems Analytical Data Summary  
 Alternative Water Solutions Program - 2015 Annual Report  
 North Pole, Alaska

Sample Port	A		C		C1	C2		D	D1	D2	U1-C	U1-C1	U1-C2	U2-C	U2-C1	U2-C2	U3-C	U3-C1	U3-C2	U1-D	U2-D	U3-D	
Duplicates		DUP		DUP			DUP																
PW_ID	Sample Date	Sulfolane (µg/L)																					
0755	08/31/2015	8.00J			<2.50	<2.50		<2.50															
	02/09/2015	7.10J			<2.40	<2.40	<2.40	<2.40															
	09/08/2014	5.80J			<2.40	<2.40		<2.40															
	04/21/2014	4.80J			<2.00	<2.00		<2.00															
	10/07/2013	6.30J	6.50J		<3.10	<3.10		<3.10															
	06/07/2013	6.20J*			<3.10J*	<3.10J*		<3.10J*															
	12/03/2012	7.70JH*			<3.10J*	<3.10J*		<3.10J*															
	10/15/2012	5.70J*			<3.10J*	<3.10J*		<3.10J*															
	01/24/2012	6.00J*		<3.10J*																			
	09/06/2011	5.56J																					
02/10/2011	<11.2																						
0757	08/24/2015	13.1			<2.50	<2.50		<2.50															
	02/06/2015	14.1			<2.40	<2.40		<2.40															
	06/23/2014	12.4	11.6		<2.40	<2.40		<2.40															
	08/30/2013	13.0J*			<3.10J*	<3.10J*		<3.10J*															
	11/30/2012	12.7J*			<3.10J*	<3.10J*		<3.10J*															
	04/24/2012	9.30J*		<3.10J*																			
	08/19/2011	10.7																					
01/06/2011	<14.1																						
0758	10/02/2015	21.9			<2.50	<2.50		<2.50															
	03/06/2015	18.2			<2.40	<2.40	<2.40	<2.40															
	07/08/2014	21.3	17.7		<2.40	<2.40		<2.40															
	12/03/2013	15.7	14.7		<3.10	<3.10		<3.10															
	04/19/2013	17.4J*			<3.10J*	<3.10J*		<3.10J*															
	07/24/2012	17.0J*			<3.10J*	<3.10J*		<3.10J*															
	12/07/2011	13.8J*			<3.10J*	<3.10J*		<3.10J*															
	06/24/2011	13.6J*		<0.790J*																			
01/06/2011	11.6																						
0773	11/03/2015	5.50J			<2.50	<2.50	<2.50	<2.50															
	06/05/2015	7.60J			<1.00	<1.00	<1.00	<1.00															
	02/16/2015	7.00J			<2.40	<2.40	<2.40	<2.40															
	06/10/2014	3.20J	<2.40		<2.40	<2.40		<2.40															
	02/06/2014	6.40J	7.80J		<3.00	<3.00		<3.00															
	08/27/2013	5.00J*			<3.10J*	<3.10J*		<3.10J*															
	10/23/2012	3.20J*			<3.10J*	<3.10J*		<3.10J*															
	12/07/2011	3.40J*		<3.10J*																			
	09/03/2011	3.92J																					
10/30/2010	<10.8																						

Table 3  
 POE Treatment Systems Analytical Data Summary  
 Alternative Water Solutions Program - 2015 Annual Report  
 North Pole, Alaska

Sample Port		A		C		C1	C2		D	D1	D2	U1-C	U1-C1	U1-C2	U2-C	U2-C1	U2-C2	U3-C	U3-C1	U3-C2	U1-D	U2-D	U3-D	
Duplicates			DUP		DUP			DUP																
PW_ID	Sample Date	Sulfolane (µg/L)																						
0929	08/31/2015	24.7				<2.50	<2.50		<2.50															
	04/06/2015	19.0				<2.40	<2.40		<2.40															
	01/09/2015	20.3				3.10J	<2.40		<2.40															
	09/26/2014	20.9				<2.40	<2.40		<2.40															
	04/14/2014	20.0				<2.00	<2.00		<2.00															
	02/07/2014	21.3				<3.00	<3.00		<3.00															
	10/15/2013	15.3	16.3			<3.10	<3.10		<3.10															
	06/18/2013	17.2J*				<3.10J*	<3.10J*		<3.10J*															
	01/28/2013	15.2J*				<3.10J*	<3.10J*		<3.10J*															
	11/02/2012	16.3J*				<3.10J*	<3.10J*		<3.10J*															
	07/20/2012	16.5J*				<3.10J*	<3.10J*		<3.10J*															
	03/13/2012	15.0J*				<3.10J*	<3.10J*		<3.10J*															
	11/09/2011			13.6J*																				
	11/08/2011	14.0J*							<3.10J*															
05/24/2011	15.7J*		<5.00J*																					
05/11/2011	11.8J*																							
02/27/2010	14.4																							
0931	06/30/2015	25.5				<1.00	<1.00		<1.00															
	07/07/2014	26.8	25.7			<2.40	<2.40		<2.40															
	08/13/2013	20.0J*				<3.10J*	<3.10J*		<3.10J*															
	11/09/2012	21.5J*				<3.10J*	<3.10J*		<3.10J*															
	11/09/2011	20.3J*		<3.10J*																				
	11/08/2011								<3.10J*															
	04/15/2011	21.6J*		<5.00J*																				
02/26/2010	14.7																							
0932	10/19/2015	19.5																						
	08/18/2015	18.0																						
	05/19/2015	16.1																						
	04/28/2015	15.6				<2.40	<2.40	<2.40	<2.40															
	03/11/2015	14.6	14.4																					
	11/18/2014	14.2																						
	09/23/2014	13.8	13.5			<2.40	<2.40		<2.40															
	09/11/2014	12.7																						
	05/29/2014	11.7																						
	04/03/2014	9.30J	9.89J																					
	02/24/2014	10.1	10.2			<3.00	<3.00		<3.00															
	11/26/2013	8.80J	9.00J																					
	09/16/2013	8.05J																						
	08/06/2013	5.80J*				<3.10J*	<3.10J*		<3.10J*															
	06/19/2013	5.04J																						
		6.80J																						
	06/18/2013	7.00J*				<3.10J*	<3.10J*		<3.10J*															
	03/20/2013	5.09J																						
12/26/2012	<3.10J*				<3.10J*	<3.10J*		<3.10J*																
07/27/2012	4.60J*		<3.10J*																					
05/24/2012	<6.32	3.37J																						
07/14/2011	<6.66																							
02/25/2010	<10.0	<10.4																						



Table 3  
 POE Treatment Systems Analytical Data Summary  
 Alternative Water Solutions Program - 2015 Annual Report  
 North Pole, Alaska

Sample Port	A		C		C1	C2		D	D1	D2	U1-C	U1-C1	U1-C2	U2-C	U2-C1	U2-C2	U3-C	U3-C1	U3-C2	U1-D	U2-D	U3-D	
Duplicates		DUP		DUP			DUP																
PW_ID	Sample Date	Sulfolane (µg/L)																					
0933	11/02/2015	20.6			<2.50	<2.50	<2.50	<2.50															
	03/09/2015	20.9			<2.40	<2.40		<2.40															
	08/12/2014	21.8			<2.40	<2.40		<2.40															
	01/10/2014	18.0			<3.00	<3.00		<3.00															
	05/06/2013	14.6J*			<3.10J*	<3.10J*		<3.10J*															
	10/23/2012	14.1J*			<3.10J*	<3.10J*		<3.10J*															
	03/13/2012	10.9J*			<3.10J*	<3.10J*		<3.10J*															
	08/23/2011	13.4J*		<3.10J*																			
07/09/2011	10.8																						
02/27/2010	<11.4																						
0936	08/04/2015	56.2			<2.50	<2.50		<2.50															
	01/26/2015	47.7			5.20J	<2.40		<2.40															
	06/30/2014	47.0		<2.40																			
	10/15/2013	30.2		<3.10																			
	06/18/2013	33.5J*		<3.10J*																			
	06/14/2012	21.2J*		<3.10J*																			
	06/08/2011	18.2J*		<0.790J*																			
02/28/2010	14.7																						
0937	09/08/2015	37.4			3.50J	<2.50	<2.50	<2.50															
	03/09/2015	28.1			<2.40	<2.40	<2.40	<2.40															
	09/02/2014	26.0			<2.40	<2.40		<2.40															
	02/25/2014	21.7	21.1		<3.00	<3.00		<3.00															
	09/19/2013	18.2	19.3		<3.10	<3.10		<3.10															
	04/15/2013	17.3J*			<3.10J*	<3.10J*		<3.10J*															
	10/08/2012	16.6J*			<3.10J*	<3.10J*		<3.10J*															
	05/22/2012	15.5J*			<3.10J*	<3.10J*		<3.10J*															
	02/08/2012	15.3J*			<3.10J*	<3.10J*		<3.10J*															
	09/07/2011	14.2J*		<3.10J*																			
07/08/2011	14.6																						
02/26/2010	<10.5																						
0938	10/26/2015	14.4			<2.50	<2.50	<2.50	<2.50															
	04/06/2015	13.9			<2.40	<2.40		<2.40															
	07/22/2014	12.0	12.4		<2.40	<2.40		<2.40															
	03/04/2014	10.2	10.5		<3.00	<3.00		<3.00															
	11/05/2013	10.2			<3.10	<3.10		<3.10															
	03/18/2013	8.90J*			<3.10J*	<3.10J*		<3.10J*															
	02/07/2013	9.00J*		<3.10J*																			
	06/04/2012	8.20J*			<3.10J*	<3.10J*		<3.10J*															
	11/18/2011	8.40J*		<3.10J*																			
	07/11/2011	9.02J																					
03/02/2010	<10.3																						
0940	05/08/2015	27.9		<2.40																			
	04/03/2014	30.3		<2.00																			
	01/28/2013	20.6J*			<3.10J*	<3.10J*		<3.10J*															
	10/11/2011	19.5J*		<3.10J*																			
	02/26/2010	15.1	15.6																				

Table 3  
 POE Treatment Systems Analytical Data Summary  
 Alternative Water Solutions Program - 2015 Annual Report  
 North Pole, Alaska

Sample Port		A		C		C1	C2		D	D1	D2	U1-C	U1-C1	U1-C2	U2-C	U2-C1	U2-C2	U3-C	U3-C1	U3-C2	U1-D	U2-D	U3-D	
Duplicates			DUP		DUP			DUP																
PW_ID	Sample Date	Sulfolane (µg/L)																						
0942	07/13/2015	51.3				<1.00	3.70J*	7.20J*	<1.00															
	01/05/2015	48.2				<2.40	<2.40	<2.40	<2.40															
	07/14/2014	50.0				2.80J	<2.40		<2.40															
	02/24/2014	44.0				<3.00	<3.00		<3.00															
	10/08/2013	39.5	37.3			<3.10	<3.10		<3.10															
	05/13/2013	40.5J*				3.70J*	<3.10J*		<3.10J*															
	04/20/2012	30.2J*				<3.10J*	<3.10J*		<3.10J*															
	10/05/2011	24.7J*			<3.10J*				<3.10J*															
05/06/2011	26.3J*			<5.00J*																				
02/26/2010	17.0																							
0943	10/23/2015	51.2	50.1																					
	08/19/2015	49.6																						
	08/14/2015	54.7				2.90J	<2.50		<2.50															
	05/19/2015	40.0																						
	01/16/2015	43.7				<2.40	<2.40	<2.40	<2.40															
	11/04/2014	40.6																						
	08/19/2014	35.3																						
	06/04/2014	33.9																						
	05/13/2014	36.1	37.5			2.40J	<2.00		<2.00															
	03/03/2014	32.9																						
	11/26/2013	29.6																						
	10/12/2013	26.5	26.1			<3.10	<3.10		<3.10															
	09/11/2013	30.3																						
	06/06/2013	25.8	25.6																					
		24.4																						
	04/19/2013	25.1J*				<3.10J*	<3.10J*		<3.10J*															
	03/12/2013	25.7																						
01/02/2013	23.8J*				<3.10J*	<3.10J*		<3.10J*																
09/21/2012	25.0J*				<3.10J*	<3.10J*		<3.10J*																
04/11/2012	21.4J*			<3.10J*																				
10/03/2011	21.4																							
03/07/2010	<10.0																							
0944	11/10/2015	24.8				<2.50	<2.50	<2.50	<2.50															
	06/01/2015	24.3				1.60J	<1.00		<1.00															
	11/17/2014	26.2				<2.40	<2.40		<2.40															
	05/12/2014	19.5	19.7			<2.00	<2.00		<2.00															
	12/13/2013	18.4	19.7			<3.10	<3.10		<3.10															
	07/23/2013	18.4J*				<3.10J*	<3.10J*		<3.10J*															
	06/05/2013	15.8J*				<3.10J*	<3.10J*		<3.10J*															
	02/18/2013	14.3J*				<3.10J*	<3.10J*		<3.10J*															
	08/17/2012	19.7J*				<3.10J*	<3.10J*		<3.10J*															
	04/05/2012	15.5J*				<3.10J*	<3.10J*		<3.10J*															
10/27/2011	17.8J*			<3.10J*																				
09/07/2011	18.4																							
03/05/2010	<10.5																							

Table 3  
 POE Treatment Systems Analytical Data Summary  
 Alternative Water Solutions Program - 2015 Annual Report  
 North Pole, Alaska

Sample Port	A		C		C1	C2		D	D1	D2	U1-C	U1-C1	U1-C2	U2-C	U2-C1	U2-C2	U3-C	U3-C1	U3-C2	U1-D	U2-D	U3-D	
Duplicates		DUP		DUP			DUP																
PW_ID	Sample Date	Sulfolane (µg/L)																					
0945	09/22/2015	13.2			<2.50	<2.50		<2.50															
	08/04/2014	15.4	15.9		<2.40	<2.40		<2.40															
	06/17/2014	14.3			<2.40	<2.40		<2.40															
	11/22/2013	9.60J	10.1		<3.10	<3.10		<3.10															
	10/19/2012	9.40J*			<3.10J*	<3.10J*		<3.10J*															
	10/21/2011	8.70J*		<3.10J*																			
	07/25/2011	7.01J																					
02/26/2010	<10.6																						
0946	07/20/2015				7.20J	<2.50																	
	07/07/2015	34.2			3.20J	7.90J	8.00J	<1.00															
	10/04/2014	30.8	29.0		<2.40	<2.40		<2.40															
	09/21/2013	22.3	24.0		<3.10	<3.10		<3.10J*															
	12/10/2011	17.5J*			<3.10J*	<3.10J*		<3.10J*															
	06/20/2011	18.7J*		<0.790J*																			
03/19/2010	18.3																						
0947	07/27/2015	17.1			<2.50	<2.50		<2.50															
	12/01/2014	18.7			<2.40	<2.40	<2.40	<2.40															
	04/21/2014	13.4	11.3		<2.00	<2.00		<2.00															
	09/17/2013	11.0	12.1		<3.10	<3.10		<3.10															
	01/25/2013	10.2J*			<3.10J*	<3.10J*		<3.10J*															
	06/12/2012	10.4J*			<3.10J*	<3.10J*		<3.10J*															
	10/05/2011	9.90J*		<3.10J*																			
05/26/2011	9.08J																						
02/11/2010	<10.4																						
0948	08/31/2015	17.4			<2.50	<2.50		<2.50															
	09/22/2014	14.2	14.3		<2.40	<2.40		<2.40															
	09/17/2013	11.2			<3.10	<3.10		<3.10															
	10/19/2011	9.00J*		<3.10J*																			
	05/26/2011	9.44J																					
02/11/2010	<10.0																						
0988	06/30/2015	41.3			<1.00	<1.00	<1.00	<1.00															
	12/05/2014	50.0			<2.40	<2.40	<2.40	<2.40															
	05/27/2014	64.4	65.6		<2.00	<2.00		<2.00															
	11/11/2013	72.5	71.0		<3.10	<3.10		<3.10															
	06/24/2013	101J*			<3.10J*	<3.10J*		<3.10J*															
	01/22/2013	86.8J*			<3.10J*	<3.10J*		<3.10J*															
	09/10/2012	125J*			<3.10J*	<3.10J*		<3.10J*															
	04/20/2012	145J*			<3.10J*	<3.10J*		<3.10J*															
	12/09/2011	146J*			<3.10J*	<3.10J*		<3.10J*															
	07/12/2011	164J*		<0.790J*																			
02/07/2010	157																						

Table 3  
 POE Treatment Systems Analytical Data Summary  
 Alternative Water Solutions Program - 2015 Annual Report  
 North Pole, Alaska

Sample Port		A		C		C1	C2		D	D1	D2	U1-C	U1-C1	U1-C2	U2-C	U2-C1	U2-C2	U3-C	U3-C1	U3-C2	U1-D	U2-D	U3-D
Duplicates			DUP		DUP			DUP															
PW_ID	Sample Date	Sulfolane (µg/L)																					
0996	09/25/2015	8.10J				<2.50	<2.50	<2.50	<2.50														
	04/21/2015	6.90J				<2.40	<2.40		<2.40														
	09/26/2014	7.40J	7.80J			<2.40	<2.40		<2.40														
	05/19/2014	9.40J	9.30J			<2.00	<2.00		<2.00														
	11/12/2013	9.10J	9.80J			<3.10	<3.10		<3.10														
	07/09/2013	10.9J*				<3.10J*	<3.10J*		<3.10J*														
	01/07/2013	12.1J*				<3.10J*	<3.10J*		<3.10J*														
	07/11/2012	14.2J*				<3.10J*	<3.10J*		<3.10J*														
	12/02/2011	14.2J*				<3.10J*	<3.10J*		<3.10J*														
06/15/2011	15.0J*		<0.790J*																				
03/11/2010	16.7																						
0997**	06/29/2015	3.30J*				<1.00	<1.00		<1.00														
	07/28/2014	4.10J				<2.40	<2.40		<2.40														
	08/12/2013	<3.10J*				<3.10J*	<3.10J*		<3.10J*														
	11/01/2011	4.80J*		<3.10J*																			
	07/08/2011	4.06J																					
02/26/2010	<10.4																						
1086	08/11/2015	87.7				<2.50	<2.50		<2.50														
	01/05/2015	80.3				<2.40	<2.40		<2.40														
	06/20/2014					<2.40	<2.40																
	05/13/2014	97.3				<2.00	2.10J		<2.00														
	10/07/2013	85.7	88.8			<3.10	<3.10		<3.10														
	04/02/2013	92.5J*				<3.10J*	<3.10J*		<3.10J*														
	10/05/2012	89.0J*				6.20J*	<3.10J*		<3.10J*														
	02/17/2012	83.6J*				5.10J*	<3.10J*		<3.10J*														
08/09/2011	87.6J*		<3.10J*																				
03/06/2010	46.8																						
1095	08/31/2015	161				<2.50	<2.50	<2.50	<2.50														
	03/24/2015	179				<2.40	<2.40	<2.40	<2.40														
	09/29/2014	201	204			<2.40	<2.40		<2.40														
	05/15/2014	282				<2.00	<2.00		<2.00														
	09/30/2013	288				<3.10	<3.10		<3.10														
	05/21/2013	346J*				<3.10J*	<3.10J*		<3.10J*														
	11/27/2012	463J*				<3.10J*	<3.10J*		<3.10J*														
	07/11/2012	421J*				<3.10J*	<3.10J*		<3.10J*														
07/21/2011	402J*		<3.10J*																				
01/04/2010	117																						
1096	09/25/2015	121				<2.50	<2.50		<2.50														
	07/29/2013	296J*				<3.10J*	<3.10J*		<3.10J*														
	12/15/2011	348J*				<3.10J*	<3.10J*		<3.10J*														
	07/20/2011	440J*		<3.10J*																			
	06/06/2011	327																					
1097	09/11/2015	165				<2.50	<2.50		<2.50														
	02/13/2015	183				<2.40	<2.40		<2.40														
	07/11/2014	245				<2.40	<2.40		<2.40														
	12/20/2013	278	273			<3.00	<3.00		<3.00														
	05/20/2013	353J*				<3.10J*	<3.10J*		<3.10J*														
	11/02/2012	358J*		<3.10J*																			
01/07/2010	87.0	98.9																					

Table 3  
 POE Treatment Systems Analytical Data Summary  
 Alternative Water Solutions Program - 2015 Annual Report  
 North Pole, Alaska

Sample Port		A	C	C1	C2	D	D1	D2	U1-C	U1-C1	U1-C2	U2-C	U2-C1	U2-C2	U3-C	U3-C1	U3-C2	U1-D	U2-D	U3-D	
Duplicates			DUP																		
PW_ID	Sample Date	Sulfolane (µg/L)																			
1098	08/14/2012	367J*		<3.10J*	<3.10J*	<3.10J*															
	01/25/2012	340J*		14.6J*	<3.10J*	<3.10J*															
	01/09/2010	194																			
1099	10/16/2015	75.4																			
	08/13/2015	81.2	81.1																		
	08/03/2015	89.3		<2.50	<2.50	<2.50															
	05/18/2015	81.2	81.0																		
	03/10/2015	86.9																			
	02/03/2015	85.7		<2.40	<2.40	<2.40	<2.40														
	11/18/2014	91.5	89.8																		
	08/26/2014	101		<2.40	<2.40	<2.40															
	08/18/2014	94.4																			
	06/02/2014	96.8																			
	03/24/2014	94.9																			
	03/03/2014	99.5		<3.00	<3.00	<3.00															
	12/02/2013	113																			
	09/26/2013	97.2	104																		
	09/24/2013	91.5	89.6		<3.10	<3.10	<3.10														
	06/04/2013	97.4																			
		103																			
03/12/2013	107	105																			
03/01/2013	98.9J*			<3.10J*	<3.10J*	<3.10J*															
09/10/2012	96.8J*		<3.10J*																		
1100	10/30/2015	101		<2.50	<2.50	<2.50	<2.50														
	04/03/2015	113		<2.40	<2.40	<2.40	<2.40														
	05/15/2014	196	210	<2.00	<2.00	<2.00	<2.00														
	09/06/2013	238J*		<3.10J*	<3.10J*	<3.10J*	<3.10J*														
	02/04/2013	267J*		<3.10J*	<3.10J*	<3.10J*	<3.10J*														
	08/23/2012	313J*		<3.10J*																	
05/24/2010	185																				
1101	07/20/2015	26.6		<2.50	<2.50	<2.50	<2.50														
	06/30/2014	25.9	24.9	<2.40	<2.40	<2.40	<2.40														
	08/26/2013	16.7J*		<3.10J*	<3.10J*	<3.10J*	<3.10J*														
	05/01/2013	<3.10J*		<3.10J*	<3.10J*	<3.10J*	<3.10J*														
	10/15/2012	16.1J*		<3.10J*	<3.10J*	<3.10J*	<3.10J*														
	05/02/2012	13.2J*		<3.10J*																	
	09/02/2011	15.1																			
02/27/2010	<11.4	<10.0																			
1103	11/02/2015	62.4		<2.50	<2.50	<2.50	<2.50														
	04/20/2015	43.5		3.10J	<2.40	<2.40	<2.40														
	06/23/2014	44.1		3.50J	<2.40	<2.40	<2.40														
	01/10/2014	40.1	41.3	<3.00	<3.00	<3.00	<3.00														
	08/26/2013	30.3J*		<3.10J*	<3.10J*	<3.10J*	<3.10J*														
	04/09/2013	26.0J*		<3.10J*	<3.10J*	<3.10J*	<3.10J*														
08/07/2012	28.8J*		<3.10J*																		

Table 3  
 POE Treatment Systems Analytical Data Summary  
 Alternative Water Solutions Program - 2015 Annual Report  
 North Pole, Alaska

Sample Port		A		C		C1	C2		D	D1	D2	U1-C	U1-C1	U1-C2	U2-C	U2-C1	U2-C2	U3-C	U3-C1	U3-C2	U1-D	U2-D	U3-D	
Duplicates			DUP		DUP			DUP																
PW_ID	Sample Date	Sulfolane (µg/L)																						
1104	11/10/2014	63.9				<2.40	<2.40		<2.40															
	11/25/2013	52.7	49.5			<3.10	<3.10		<3.10															
	05/08/2012	40.9J*		<3.10J*																				
	02/27/2010	27.3																						
1105	08/21/2015	5.70J				<2.50	<2.50		<2.50															
	09/08/2014	7.40J	7.10J			<2.40	<2.40		<2.40															
	11/12/2013	7.90J				<3.10	<3.10		<3.10															
	08/01/2013	6.10J*				<3.10J*	<3.10J*		<3.10J*															
	05/10/2013	7.90J*				<3.10J*	<3.10J*		<3.10J*															
	11/14/2012	6.20J*				<3.10J*	<3.10J*		<3.10J*															
	05/11/2012	7.30J*		<3.10J*																				
	09/02/2011	6.72J																						
	03/27/2010	<10.3																						
1106**	09/29/2015	6.80J				<2.50	<2.50	<2.50	<2.50															
	05/11/2015	5.80J				<2.40	<2.40		<2.40															
	03/17/2015	6.90J				<2.40	<2.40		<2.40															
	12/12/2014	6.70J				<2.40	<2.40		<2.40															
	06/16/2014	9.20J				<2.40	<2.40		<2.40															
	01/06/2014	10.4		<3.00																				
	02/24/2010	10.6																						
1107**	10/09/2015	22.1				<2.50	<2.50		<2.50															
	08/25/2015	21.2				<2.50	<2.50		<2.50															
	07/07/2015	19.7				<1.00	<1.00		<1.00															
	05/04/2015	20.9				<2.40	<2.40		<2.40															
	02/17/2015	22.9				<2.40	<2.40		<2.40															
	12/12/2014	20.2				<2.40	<2.40	<2.40	<2.40															
	08/26/2014	22.0	21.4			<2.40	<2.40		<2.40															
	06/16/2014	26.5	25.0			<2.40	<2.40		<2.40															
	02/28/2014	27.1				<3.00	<3.00		<3.00															
	12/20/2013	24.3		<3.10																				
1108**	08/24/2011	13.4																						
	02/24/2010	<10.4																						
	10/09/2015	67.3				<2.50	<2.50	<2.50	<2.50															
	09/08/2015	66.1				<2.50	<2.50		<2.50															
	07/07/2015	57.6				<1.00	<1.00		<1.00															
	05/19/2015	54.6				1.50J	<1.00		<1.00															
	03/10/2015	53.0JL*				<2.40J*	<2.40J*	<2.40J*	<2.40J*															
	12/30/2014	43.5				<2.40	<2.40		<2.40															
	11/11/2014	58.7				<2.40	<2.40		<2.40															
	08/15/2014	63.8	63.3			<2.40	<2.40		<2.40															
04/21/2014	54.4				<2.00	<2.00		<2.00																
01/22/2014	59.1		<3.00																					
02/25/2010	19.3																							

Table 3  
 POE Treatment Systems Analytical Data Summary  
 Alternative Water Solutions Program - 2015 Annual Report  
 North Pole, Alaska

Sample Port		A		C		C1	C2		D	D1	D2	U1-C	U1-C1	U1-C2	U2-C	U2-C1	U2-C2	U3-C	U3-C1	U3-C2	U1-D	U2-D	U3-D	
Duplicates			DUP		DUP			DUP																
PW_ID	Sample Date	Sulfolane (µg/L)																						
1109	05/18/2015	22.0																						
	11/25/2014	22.6																						
	09/16/2014	28.9	26.8			<2.40	<2.40		<2.40															
	08/21/2014	25.7																						
	06/03/2014	25.5																						
	03/18/2014	28.2																						
	12/17/2013	27.3																						
	09/09/2013	26.2																						
	08/09/2013	23.2J*					<3.10J*	<3.10J*		<3.10J*														
	06/05/2013	25.6																						
		26.5																						
	03/13/2013	24.6																						
06/01/2012	20.6J*		<3.10J*																					
08/29/2011	18.3																							
02/27/2010	<11.4																							
1110	08/18/2015	7.50J				<2.50	<2.50	<2.50	<2.50															
	09/05/2014	5.70J	5.20J			<2.40	<2.40		<2.40															
	08/19/2013	4.70J*				<3.10J*	<3.10J*		<3.10J*															
	08/15/2012	5.20J*		<3.10J*																				
	01/27/2012	4.31J																						
1111‡	08/23/2012	28.9	25.7																					
1114	04/27/2015			<2.40																				
	04/06/2015	49.9				<2.40	4.70J	4.10J	<2.40															
	12/15/2014	48.9				<2.40	<2.40		<2.40															
	07/18/2014	51.7				4.70J	<2.40		<2.40															
	02/10/2014	50.0JL*	49.4JL*			<3.00J*	<3.00J*		<3.00J*															
	09/16/2013	42.4	40.6			<3.10	<3.10		<3.10															
	03/05/2013	39.4J*				<3.10J*	<3.10J*		<3.10J*															
	08/07/2012	40.1J*				<3.10J*	<3.10J*		<3.10J*															
	12/01/2011	35.4J*				<3.10J*	<3.10J*		<3.10J*															
	07/27/2011	40.7J*		<3.10J*																				
02/25/2010	22.2																							
1116	10/30/2015	34.5				<2.50	<2.50		<2.50															
	08/03/2015	33.9				<2.50	<2.50		<2.50															
	03/13/2015	32.0				<2.40	<2.40		<2.40															
	02/17/2015	32.2				7.70J	<2.40		<2.40															
	11/14/2014	30.8				<2.40	<2.40	<2.40	<2.40															
	06/17/2014	33.4	27.1			<2.40	<2.40		<2.40															
	12/16/2013	26.5				<3.10	<3.10		<3.10															
	04/08/2013	27.3J*				<3.10J*	<3.10J*		<3.10J*															
	06/12/2012	26.1J*		<3.10J*																				
06/21/2010	20.8	23.2																						

Table 3  
 POE Treatment Systems Analytical Data Summary  
 Alternative Water Solutions Program - 2015 Annual Report  
 North Pole, Alaska

Sample Port		A		C		C1	C2		D	D1	D2	U1-C	U1-C1	U1-C2	U2-C	U2-C1	U2-C2	U3-C	U3-C1	U3-C2	U1-D	U2-D	U3-D	
Duplicates			DUP		DUP			DUP																
PW_ID	Sample Date	Sulfolane (µg/L)																						
1118	10/09/2015	14.9				<2.50	<2.50		<2.50															
	08/21/2015	14.8				<2.50	<2.50		<2.50															
	07/17/2015	15.2				2.90J	<2.50		<2.50															
	03/24/2015	11.6				<2.40	<2.40		<2.40															
	01/20/2015	12.6				<2.40	<2.40		<2.40															
	06/30/2014	12.3				<2.40	<2.40		<2.40															
	04/15/2014	9.90J				<2.00	<2.00		<2.00															
	01/31/2014	10.5				<3.00	<3.00		<3.00															
	03/12/2013	12.0J*				<3.10J*	<3.10J*		<3.10J*															
	11/13/2012	7.40J*				<3.10J*	<3.10J*		<3.10J*															
	08/07/2012	8.20J*				<3.10J*	<3.10J*		<3.10J*															
	04/13/2012	8.70J*				<3.10J*	<3.10J*		<3.10J*															
09/28/2011	7.80J*		<3.10J*																					
07/08/2011	8.63J																							
03/09/2010	<10.0																							
1155**	10/16/2015	169	172																					
	08/20/2015	172	176																					
	08/17/2015	177									<2.50			<2.50										
	05/29/2015										<1.00			<1.00										
	05/18/2015	159										<1.00J*	3.40J*		<1.00	2.60J					<1.00	<1.00		
	05/05/2015	171																						
	02/17/2015	166									<2.40			<2.40								<2.40	<2.40	
	02/12/2015	170																						
	11/18/2014										<2.40													
	11/04/2014	169																						
	11/03/2014	174										<2.40	2.50J		<2.40	<2.40						<2.40	<2.40	
	08/25/2014	193									<2.40												<2.40	<2.40
	08/18/2014	180																						
	05/28/2014	181																						
	04/11/2014	190	190										2.90J	<2.00		8.70J	<2.00					<2.00	<2.00	
	03/10/2014	173																						
	03/07/2014	184										<3.00			3.60J							<3.00	<3.00	
	12/13/2013	156										<3.10			<3.10							<3.10	<3.10	
	11/25/2013	173																						
	09/11/2013	172																						
	09/02/2013	144JL*										<3.10J*			<3.10J*							<3.10J*	<3.10J*	
	06/10/2013	163J*										<3.10J*			<3.10J*							<3.10J*	<3.10J*	
	06/05/2013	166																						
	04/26/2013	155J*											<3.10J*	<3.10J*		<3.10J*	<3.10J*					<3.10J*	<3.10J*	
	03/18/2013	162																						
	03/01/2013	143J*										<3.10J*			<3.10J*							<3.10J*	<3.10J*	
	09/12/2012	151J*										<10.0J*			<10.0J*							<10.0J*	<10.0J*	
	07/10/2012	146J*											<3.10J*	<3.10J*		<3.10J*	<3.10J*					<3.10J*	<3.10J*	
	04/09/2012	143J*										<3.10J*			<3.10J*							<3.10J*	<3.10J*	
	10/20/2011	118J*										<3.10J*			<3.10J*							<3.10J*	<3.10J*	
02/13/2010	55.4																							



Table 3  
 POE Treatment Systems Analytical Data Summary  
 Alternative Water Solutions Program - 2015 Annual Report  
 North Pole, Alaska

Sample Port		A		C		C1	C2		D	D1	D2	U1-C	U1-C1	U1-C2	U2-C	U2-C1	U2-C2	U3-C	U3-C1	U3-C2	U1-D	U2-D	U3-D	
Duplicates			DUP		DUP			DUP																
PW_ID	Sample Date	Sulfolane (µg/L)																						
1186**	08/28/2015	13.6				<2.50	<2.50		<2.50															
	07/20/2015	13.8				<2.50	<2.50		<2.50															
	06/12/2015	13.5				<1.00	<1.00		<1.00															
	05/04/2015	13.0				<2.40	<2.40		<2.40															
	03/23/2015	12.7				<2.40	<2.40		<2.40															
	02/20/2015	14.6				<2.40	<2.40		<2.40															
	01/20/2015	14.3				<2.40	<2.40		<2.40															
	12/16/2014	14.5				<2.40	<2.40		<2.40															
	10/31/2014	15.1				<2.40	<2.40	<2.40	<2.40															
	09/08/2014	16.0	16.6			<2.40	<2.40		<2.40															
	07/21/2014	15.6	15.9			<2.40	<2.40		<2.40															
	05/13/2014	15.1	15.1			<2.00	<2.00		<2.00															
	02/04/2014	18.3				<3.00	<3.00		<3.00															
	09/20/2013	13.3				<3.10	<3.10		<3.10															
	07/16/2013	10.9J*				<3.10J*	<3.10J*		<3.10J*															
	04/19/2013	7.60J*				<3.10J*	<3.10J*		<3.10J*															
	02/05/2013	13.0J*				<3.10J*	<3.10J*		<3.10J*															
	12/04/2012	20.8JH*				<3.10J*	<3.10J*		<3.10J*															
	08/20/2012	15.9J*				<3.10J*	<3.10J*		<3.10J*															
	04/13/2012	15.2J*				<3.10J*	<3.10J*		<3.10J*															
12/14/2011	15.7J*		<3.10J*																					
08/31/2011	16.3																							
05/10/2010	<10.5																							
04/18/2010	<10.0J*																							
1190	12/29/2014	9.50J				<2.40	<2.40	<2.40	<2.40															
	04/07/2014	8.50J				<2.00	<2.00		<2.00															
	11/08/2013			<3.10					<3.10															
	09/16/2013	6.60J	6.60J			<3.10	<3.10		<3.10															
	01/30/2013	6.20J*				<3.10J*	<3.10J*		<3.10J*															
	06/26/2012	7.10J*				<3.10J*	<3.10J*		<3.10J*															
	10/27/2011	6.00J*		<3.10J*																				
	08/29/2011	5.92J																						
04/15/2010	<10.0																							
1276	06/22/2015	3.60J				<1.00	<1.00	<1.00	<1.00															
	03/02/2015	6.60J				2.60J	<2.40		<2.40															
	07/28/2014	3.90J	4.10J			<2.40	<2.40		<2.40															
	02/10/2014	<3.00J*	<3.00J*			<3.00J*	<3.00J*		<3.00J*															
	08/27/2013	4.60J*				<3.10J*	<3.10J*		<3.10J*															
	02/28/2013	<3.10J*				<3.10J*	<3.10J*		<3.10J*															
	07/17/2012	6.50J*				<3.10J*																		
	08/29/2011	5.47J																						
04/13/2010	<10.0																							

Table 3  
 POE Treatment Systems Analytical Data Summary  
 Alternative Water Solutions Program - 2015 Annual Report  
 North Pole, Alaska

Sample Port	A	C	C1	C2	D	D1	D2	U1-C	U1-C1	U1-C2	U2-C	U2-C1	U2-C2	U3-C	U3-C1	U3-C2	U1-D	U2-D	U3-D	
Duplicates	DUP	DUP		DUP																
PW_ID	Sample Date	Sulfolane (µg/L)																		
1314	10/02/2015	145			<2.50	<2.50	<2.50	<2.50												
	02/24/2015	188			<2.40	<2.40		<2.40												
	10/27/2014	162			<2.40	<2.40	<2.40	<2.40												
	12/09/2013	162	174		<3.10	<3.10		<3.10												
	07/02/2013	168J*			<3.10J*	<3.10J*		<3.10J*												
	12/07/2012	188J*			<3.10J*	<3.10J*		<3.10J*												
	05/04/2012	141J*			<3.10J*	<3.10J*		<3.10J*												
	11/07/2011	119J*		<3.10J*				<3.10J*												
	05/12/2011	94.8J*		<5.00J*																
	04/19/2011	101JL*		<5.00J*																
03/09/2010	69.7																			
1315	10/19/2015	191			<2.50	<2.50		<2.50												
	07/14/2015	162			<1.00	<1.00		<1.00												
	04/14/2015	178			<2.40	<2.40		<2.40												
	01/13/2015	85.6			<2.40	<2.40		<2.40												
	10/21/2014	191			<2.40	<2.40	<2.40	<2.40												
	08/08/2014	157	157		<2.40	<2.40		<2.40												
	03/10/2014	164			<3.00	<3.00		<3.00												
	11/08/2013	169	174		<3.10	<3.10		<3.10												
	07/15/2013	147J*			<3.10J*	<3.10J*		<3.10J*												
	04/01/2013	189J*			<3.10J*	<3.10J*		<3.10J*												
	11/23/2012			<3.10																
	11/09/2012	78.0J*			<3.10J*	63.0J*		<3.10J*												
	07/18/2012	129J*			<3.10J*	<3.10J*		<3.10J*												
	02/28/2012	118J*			<3.10J*	<3.10J*		<3.10J*												
09/15/2011	49.8J*		<3.10J*				<3.10J*													
04/05/2011	110		<5.00																	
03/06/2010	72.0																			
1374	08/14/2015	167			<2.50	<2.50		<2.50												
	02/09/2015	152			<2.40	<2.40		<2.40												
	05/21/2014	140	143		<2.00	<2.00		<2.00												
	05/20/2013	118J*			<3.10J*	<3.10J*		<3.10J*												
	12/17/2012	120J*			8.60J*	<3.10J*		<3.10J*												
	06/28/2012	107J*			<3.10J*	<3.10J*		<3.10J*												
	01/23/2012	96.1J*			<3.10J*	<3.10J*		<3.10J*												
	09/14/2011	66.8J*		<3.10J*				<3.10J*												
05/18/2011	76.3J*		<5.00J*																	
03/04/2010	51.0																			
1375	11/10/2015	142			<2.50	<2.50		<2.50												
	04/14/2015	130			<2.40	<2.40		<2.40												
	10/17/2014	124			<2.40	<2.40	<2.40	<2.40												
	02/11/2014	105			<3.00	<3.00		<3.00												
	05/10/2013	92.1J*			<3.10J*	<3.10J*		<3.10J*												
	06/26/2012	83.6J*			<3.10J*	<3.10J*		<3.10J*												
	01/23/2012	79.7J*			<3.10J*	<3.10J*		<3.10J*												
	09/22/2011	63.8J*		<3.10J*																
05/18/2011	60.7J*		<5.00J*																	
03/06/2010	42.7																			

Table 3  
 POE Treatment Systems Analytical Data Summary  
 Alternative Water Solutions Program - 2015 Annual Report  
 North Pole, Alaska

Sample Port		A		C		C1	C2		D	D1	D2	U1-C	U1-C1	U1-C2	U2-C	U2-C1	U2-C2	U3-C	U3-C1	U3-C2	U1-D	U2-D	U3-D	
Duplicates			DUP		DUP			DUP																
PW_ID	Sample Date	Sulfolane (µg/L)																						
1394	02/18/2013	20.6J*				<3.10J*	<3.10J*		<3.10J*															
	09/28/2012	22.6J*				<3.10J*	<3.10J*		<3.10J*															
	04/19/2012	22.7J*				<3.10J*	<3.10J*		<3.10J*															
	11/09/2011	22.1J*		<3.10J*																				
	09/07/2011	23.9																						
	04/18/2010	<10.0J*																						
1395**	10/16/2015	23.7										<2.50	<2.50		<2.50	<2.50					<2.50	<2.50		
	09/11/2015	23.7									<2.50			<2.50							<2.50	<2.50		
	05/11/2015	21.2										<2.40	<2.40		<2.40	<2.40				<2.40	<2.40			
	02/27/2015	20.2									<2.40			<2.40							<2.40	<2.40		
	12/22/2014	23.2										<2.40	<2.40		2.50J	<2.40				<2.40	<2.40			
	12/09/2014	25.1J*									<2.40			<2.40							<2.40	<2.40		
	09/19/2014	28.4									<2.40			<2.40							<2.40	<2.40		
	05/21/2014	25.8										<2.00	<2.00		<2.00	<2.00				<2.00	<2.00			
	02/14/2014	26.3	27.0									<3.00	<3.00		<3.00	<3.00				<3.00	<3.00			
	12/13/2013	24.2										<3.10			<3.10						<3.10	<3.10		
	09/03/2013	28.0JL*										<3.10J*			<3.10J*						<3.10J*	<3.10J*		
	06/10/2013	24.0J*											<3.10J*		<3.10J*						<3.10J*	<3.10J*		
	05/14/2013	25.7J*											<3.10J*	<3.10J*		<3.10J*	<3.10J*				<3.10J*	<3.10J*		
	03/15/2013	29.4J*											<3.10J*		<3.10J*									
	05/10/2010	20.0																						
04/09/2010	<10.6																							
1404	10/09/2015	<2.50				<2.50	<2.50		<2.50															
	03/16/2015	<2.40				<2.40	<2.40		<2.40															
	07/25/2014	<2.40	<2.40			<2.40	<2.40		<2.40															
	11/05/2013	<3.10	<3.10			<3.10	<3.10		<3.10															
	03/05/2013	<3.10J*				<3.10J*	<3.10J*		<3.10J*															
	07/13/2012	<3.10J*				<3.10J*	<3.10J*		<3.10J*															
	06/29/2011	<0.790J*		<0.790J*																				
11/14/2009	3.26J	4.00J																						
1406	07/06/2015	<1.00				<1.00	<1.00	<1.00	<1.00															
	09/15/2014	<2.40	<2.40			<2.40	<2.40		<2.40															
	11/25/2013	<3.10				<3.10	<3.10		<3.10															
	03/12/2013	<3.10J*				<3.10J*	<3.10J*		<3.10J*															
	05/22/2012	<3.10J*				<3.10J*	<3.10J*		<3.10J*															
	09/07/2011	3.50J*		<3.10J*																				
	07/26/2011	3.44J																						
02/27/2010	<10.5																							
1407	06/09/2015	<1.00				<1.00	<1.00		<1.00															
	11/25/2014	<2.40J*				<2.40	<2.40		<2.40															
	01/14/2014	<3.00				<3.00	<3.00		<3.00															
	08/05/2013	<3.10J*				<3.10J*	<3.10J*		<3.10J*															
	10/19/2012	<3.10J*				<3.10J*	<3.10J*		<3.10J*															
	12/27/2011	<3.10J*				<3.10J*	<3.10J*		<3.10J*															
	06/28/2011	<0.790J*		<0.790J*																				
11/13/2009	9.04J																							

Table 3  
 POE Treatment Systems Analytical Data Summary  
 Alternative Water Solutions Program - 2015 Annual Report  
 North Pole, Alaska

Sample Port		A		C		C1	C2		D	D1	D2	U1-C	U1-C1	U1-C2	U2-C	U2-C1	U2-C2	U3-C	U3-C1	U3-C2	U1-D	U2-D	U3-D
Duplicates			DUP		DUP			DUP															
PW_ID	Sample Date	Sulfolane (µg/L)																					
1408	10/12/2015	<2.50				<2.50	<2.50		<2.50														
	06/15/2015	1.30J				<1.00	<1.00		<1.00														
	03/16/2015	<2.40				<2.40	<2.40	<2.40	<2.40														
	12/05/2014	<2.40				<2.40	<2.40		<2.40														
	06/10/2014	<2.40				<2.40	<2.40		<2.40														
	08/16/2013	<3.10J*				<3.10J*	<3.10J*		<3.10J*														
	10/16/2012	<3.10J*				<3.10J*	<3.10J*		<3.10J*														
	11/18/2011	<3.10J*			<3.10J*				<3.10J*														
	05/25/2011	<5.00J*			<5.00J*																		
11/14/2009	4.46J																						
1435	04/21/2015	28.0				<2.40	<2.40		<2.40														
	08/29/2014	30.1	30.3			<2.40	<2.40		<2.40														
	01/13/2014	28.6	28.6			<3.00	<3.00		<3.00														
	04/02/2013	27.3J*				<3.10J*	<3.10J*		<3.10J*														
	03/20/2012	27.9J*			<3.10J*																		
	02/12/2010	26.8																					
1436	09/14/2015	18.8				<2.50	<2.50		<2.50														
	03/17/2015	16.0				<2.40	<2.40		<2.40														
	12/09/2014	18.0				<2.40	<2.40		<2.40														
	06/09/2014	15.9				<2.40	<2.40		<2.40														
	01/21/2014	15.3				<3.00	<3.00		<3.00														
	09/03/2013	13.5JL*				<3.10J*	<3.10J*		<3.10J*														
	04/23/2013	11.6J*				<3.10J*	<3.10J*		<3.10J*														
	12/26/2012	9.50J*				<3.10J*	<3.10J*		<3.10J*														
	09/05/2012	14.0J*				<3.10J*	<3.10J*		<3.10J*														
	05/21/2012	11.6J*			<3.10J*																		
	04/30/2012	11.8J*					<3.10J*	<3.10J*		<3.10J*													
	01/31/2012	11.2J*					<3.10J*	<3.10J*		<3.10J*													
	10/04/2011	12.5J*			<3.10J*																		
08/23/2011	12.4																						
04/17/2010	<10.0																						
1437	07/28/2015	23.1				<2.50	<2.50		<2.50														
	09/02/2014	22.6				<2.40																	
	06/26/2012	11.9J*				<3.10J*	<3.10J*		<3.10J*														
	11/14/2011	10.3J*			<3.10J*																		
	08/29/2011	10.9																					
	04/16/2010	<10.9																					
1459	01/26/2015	24.5				<2.40	<2.40		<2.40														
	05/22/2014	18.0			<2.00																		
	06/28/2013	15.7	15.7																				

Table 3  
 POE Treatment Systems Analytical Data Summary  
 Alternative Water Solutions Program - 2015 Annual Report  
 North Pole, Alaska

Sample Port	A	C	C1	C2	D	D1	D2	U1-C	U1-C1	U1-C2	U2-C	U2-C1	U2-C2	U3-C	U3-C1	U3-C2	U1-D	U2-D	U3-D
Duplicates	DUP	DUP		DUP															
PW_ID	Sample Date	Sulfolane (µg/L)																	
2199	10/12/2015	<2.50			<2.50	<2.50	<2.50	<2.50											
	08/24/2015	<2.50			<2.50	<2.50	<2.50	<2.50											
	07/17/2015	<2.50J*			<2.50	<2.50		<2.50											
	06/02/2015	1.10J			<1.00	<1.00	<1.00	<1.00											
	04/10/2015	<2.40			<2.40	<2.40	<2.40	<2.40											
	02/23/2015	<2.40			<2.40	<2.40	<2.40	<2.40											
	01/20/2015	<2.40			<2.40J*	<2.40	<2.40	<2.40											
	10/28/2014	<2.40			<2.40	<2.40		<2.40											
	07/10/2014	<2.40	<2.40																
06/02/2014	<5.15																		
2215	06/09/2015	10.6			<1.00	<1.00	<1.00	<1.00											
	11/20/2014	14.2	<2.40	<2.40				<2.40											
	11/18/2014	12.4																	
2219	08/17/2015	31.4			<2.50	<2.50		<2.50											
	06/15/2015	22.9																	

Notes:

PW-ID Private-well identification number

† System has been deactivated and moved to treating the new well for this location.

‡ System has been installed but has not been activated due to vacant structure.

\*\* Commercial location.

Flags

J Estimated concentration; sulfolane was detected below the laboratory limit of quantitation (LOQ) and above the detection limit (DL). Flag applied by laboratory.

J\* Estimated concentration. Flag applied by Shannon & Wilson, Inc. due to quality control failures and/or lack of field duplicates (for older data).

JL\* Estimated concentration, biased low. Flag applied by Shannon & Wilson, Inc. due to quality control failures.

JH\* Estimated concentration, biased high. Flag applied by Shannon & Wilson, Inc. due to quality control failures.

X\* Sample switch suspected; however, not confirmed due to inability to confirm original results.

< Sample not detected above concentration listed.

Sample Ports

A Influent water directly from private-well

C Post primary treatment sample port (after two tanks on a duplex system or one tank on a simplex system); these samples are typically collected at system startup or during a resampling event.

C1 Sample collected from port "C" prior to a carbon tank change out or maintenance activities.

C2 Sample collected from port "C" after a carbon tank change out or maintenance activities.

D Post redundant treatment sample port.

D1 Sample collected from sample port "D" prior to a redundant tank change out.

D2 Sample collected from sample port "D" after a redundant tank change out.

U1-X Unit 1 sample, where "X" indicated sample port; some locations may run several treatment units in parallel.

U2-X Unit 2 sample, where "X" indicated sample port; some locations may run several treatment units in parallel.

U3-X Unit 3 sample, where "X" indicated sample port; some locations may run several treatment units in parallel.

**Table 4**  
**2015 POE Treatment Systems Water Usage Summary**  
**Alternative Water Solutions Program - 2015 Annual Report**  
**North Pole, Alaska**

	<b>Private Well Identification Number (PW ID#)</b>	<b>Gallons of Water treated in 2015 (Approximate)</b>
1	PW-0157	81,110
2	PW-0158	31,830
3	PW-0159	85,210
4	PW-0160	41,400
5	PW-0161	64,530
6	PW-0162	21,380
7	PW-0164	36,930
8	PW-0217	29,980
9	PW-0219	35,320
10	PW-0221	32,190
11	PW-0225	51,580
12	PW-0232	28,310
13	PW-0295	27,800
14	PW-0296	47,900
15	PW-0298	29,280
16	PW-0299	9,040
17	PW-0300	34,060
18	PW-0301	30,860
19	PW-0302	20,550
20	PW-0303	43,640
21	PW-0304	37,430
22	PW-0305	65,830
23	PW-0307	77,820
24	PW-0308	43,750
25	PW-0309	27,650
26	PW-0311	34,570
27	PW-0312	46,100
28	PW-0347	34,780
29	PW-0348	20,860
30	PW-0364	42,170
31	PW-0365	138,470
32	PW-0376	78,880
33	PW-0377	58,470
34	PW-0378	101,160
35	PW-0390	39,390
36	PW-0391	33,350
37	PW-0393	0
38	PW-0394	13,030
39	PW-0439	47,320
40	PW-0442	19,180
41	PW-0453	24,730
42	PW-0454	12,670
43	PW-0456	60,410
44	PW-0463	67,700
45	PW-0466	30,480
46	PW-0480	6,050
47	PW-0483	12,360
48	PW-0484	96,900
49	PW-0487	67,930
50	PW-0488	36,880
51	PW-0489	16,330
52	PW-0498	33,880
53	PW-0502	29,340
54	PW-0503	49,930
55	PW-0504	24,550
56	PW-0506	13,470
57*	PW-0511	52,870
	PW-0511	60,560
	PW-0511	66,540
58	PW-0514	76,550

**Table 4**  
**2015 POE Treatment Systems Water Usage Summary**  
**Alternative Water Solutions Program - 2015 Annual Report**  
**North Pole, Alaska**

	<b>Private Well Identification Number (PW ID#)</b>	<b>Gallons of Water treated in 2015 (Approximate)</b>
59	PW-0515	27,100
60	PW-0542	49,380
61	PW-0544	72,560
62	PW-0550	40,740
63	PW-0553	66,330
64	PW-0554	56,710
65	PW-0556	88,620
66	PW-0557	61,050
67	PW-0558	42,180
68	PW-0559	72,080
69	PW-0560	49,320
70	PW-0561	65,210
71	PW-0562	24,910
72	PW-0563	55,850
73	PW-0564	45,970
74	PW-0565	40,650
75	PW-0566	138,720
76	PW-0567	45,040
77	PW-0568	45,590
78	PW-0570	18,580
79	PW-0586	61,560
80	PW-0597	61,510
81	PW-0598	12,490
82	PW-0599	40,990
83	PW-0606	40,660
84	PW-0607	7,680
85	PW-0608	32,830
86	PW-0609	23,200
87	PW-0610	20,830
88	PW-0615	49,180
89	PW-0617	33,350
90	PW-0618	54,750
91	PW-0620	37,520
92	PW-0622	88,740
93 (1)	PW-0624/PW-2219	28,040
94 (1)	PW-0625/PW-2215	40,320
95	PW-0636	58,730
96	PW-0646	71,530
97	PW-0647	46,960
98	PW-0648	68,890
99	PW-0649	18,680
100	PW-0651	16,130
101	PW-0653	52,170
102	PW-0656	20,470
103	PW-0657	78,950
104	PW-0658	27,300
105	PW-0660	46,940
106 (1)	PW-0754/PW-2199	147,490
107	PW-0755	45,230
108	PW-0757	36,790
109	PW-0758	37,570
110	PW-0773	44,790
111	PW-0929	57,950
112	PW-0931	1,400
113	PW-0932	38,350
114	PW-0933	34,190
115	PW-0936	35,370
116	PW-0937	51,120
117	PW-0938	42,470
118	PW-0940	18,750

**Table 4**  
**2015 POE Treatment Systems Water Usage Summary**  
**Alternative Water Solutions Program - 2015 Annual Report**  
**North Pole, Alaska**

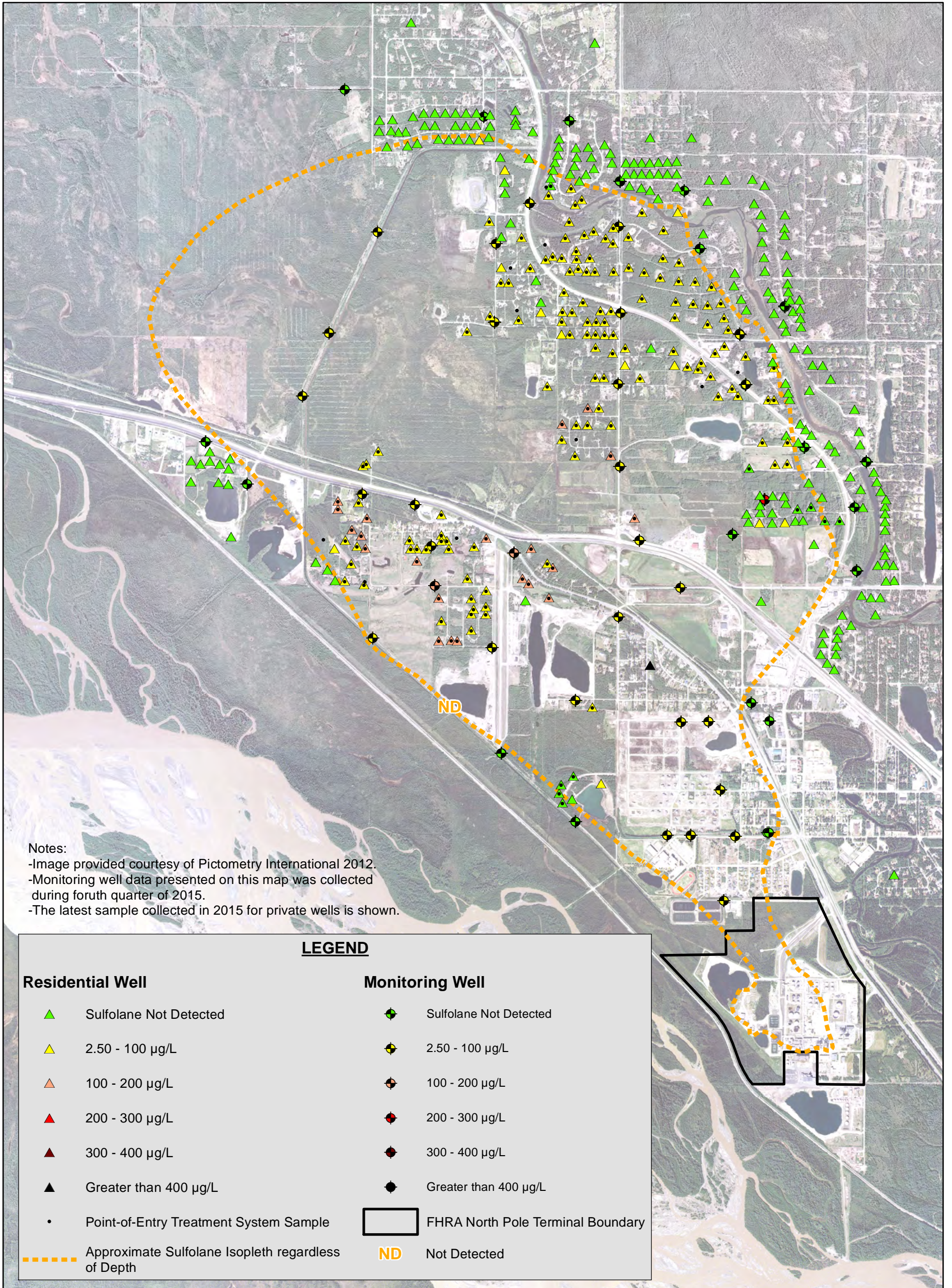
	<b>Private Well Identification Number (PW ID#)</b>	<b>Gallons of Water treated in 2015 (Approximate)</b>
119	PW-0942	36,110
120	PW-0943	39,700
121	PW-0944	52,040
122	PW-0945	18,460
123	PW-0946	38,340
124	PW-0947	35,330
125	PW-0948	11,690
126	PW-0988	28,780
127	PW-0996	35,280
128	PW-0997	4,980
129	PW-1086	27,770
130	PW-1095	32,220
131	PW-1096	1,740
132	PW-1097	30,090
133 (1)	PW-1098/PW-1099	35,860
134	PW-1100	24,940
135	PW-1101	32,090
136	PW-1103	35,630
137	PW-1104	31,470
138	PW-1105	49,050
139	PW-1106	128,090
140	PW-1107	229,570
141	PW-1108	198,070
142	PW-1109	21,710
143	PW-1110	64,520
144	PW-1111	0
145	PW-1114	29,290
146	PW-1116	73,270
147	PW-1118	94,730
148*	PW-1155	12,060
	PW-1155	13,300
149	PW-1186	127,160
150	PW-1190	17,030
151	PW-1276	55,420
152	PW-1314	37,450
153	PW-1315	64,230
154	PW-1374	59,330
155	PW-1375	42,830
156	PW-1394	0
157*	PW-1395	44,590
	PW-1395	51,170
158	PW-1404	38,470
159	PW-1406	27,320
160	PW-1407	31,720
161	PW-1408	64,800
162	PW-1435	64,190
163	PW-1436	48,280
164	PW-1437	35,220
165	PW-1459	57,220
<b>Total</b>		<b>7,754,310</b>

\* Location has more than one POE system associated with the PW ID#.

(1) Locations in which the well utilized to supply the POE system was changed.



## Figures



Alternative Water Solutions Program-  
 2015 Annual Report  
 North Pole, Alaska

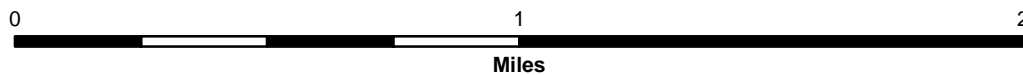
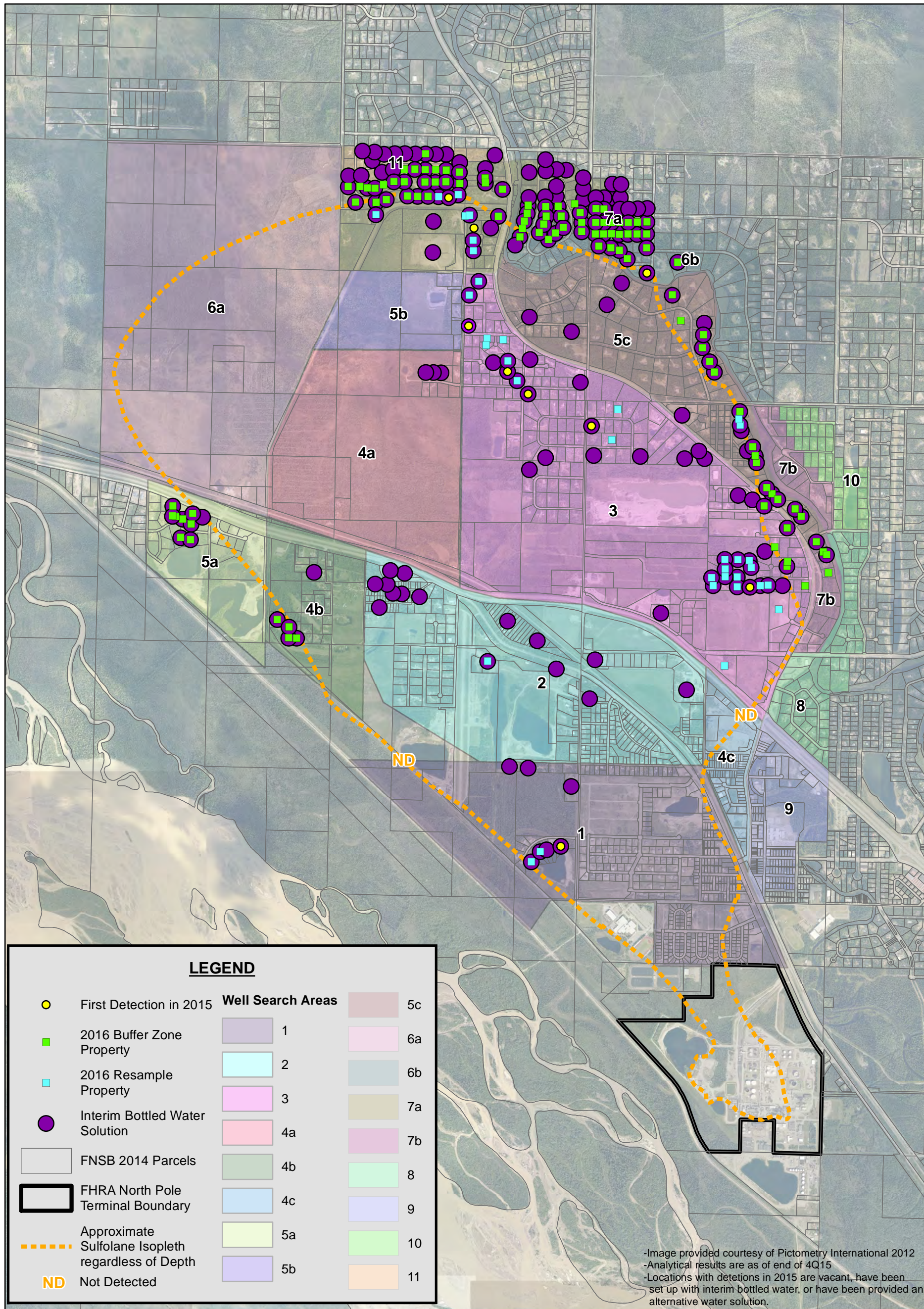
**2015 SULFOLANE PLUME AND  
 MONITORING RESULTS**

February 2016

31-1-11751-001

**SHANNON & WILSON, INC.**  
 GEOTECHNICAL AND ENVIRONMENTAL CONSULTANTS

**Figure 1**



Alternative Water Solutions Program-  
 2015 Annual Report  
 North Pole, Alaska

**2016 BUFFER ZONE AND  
 RESAMPLING AREA**

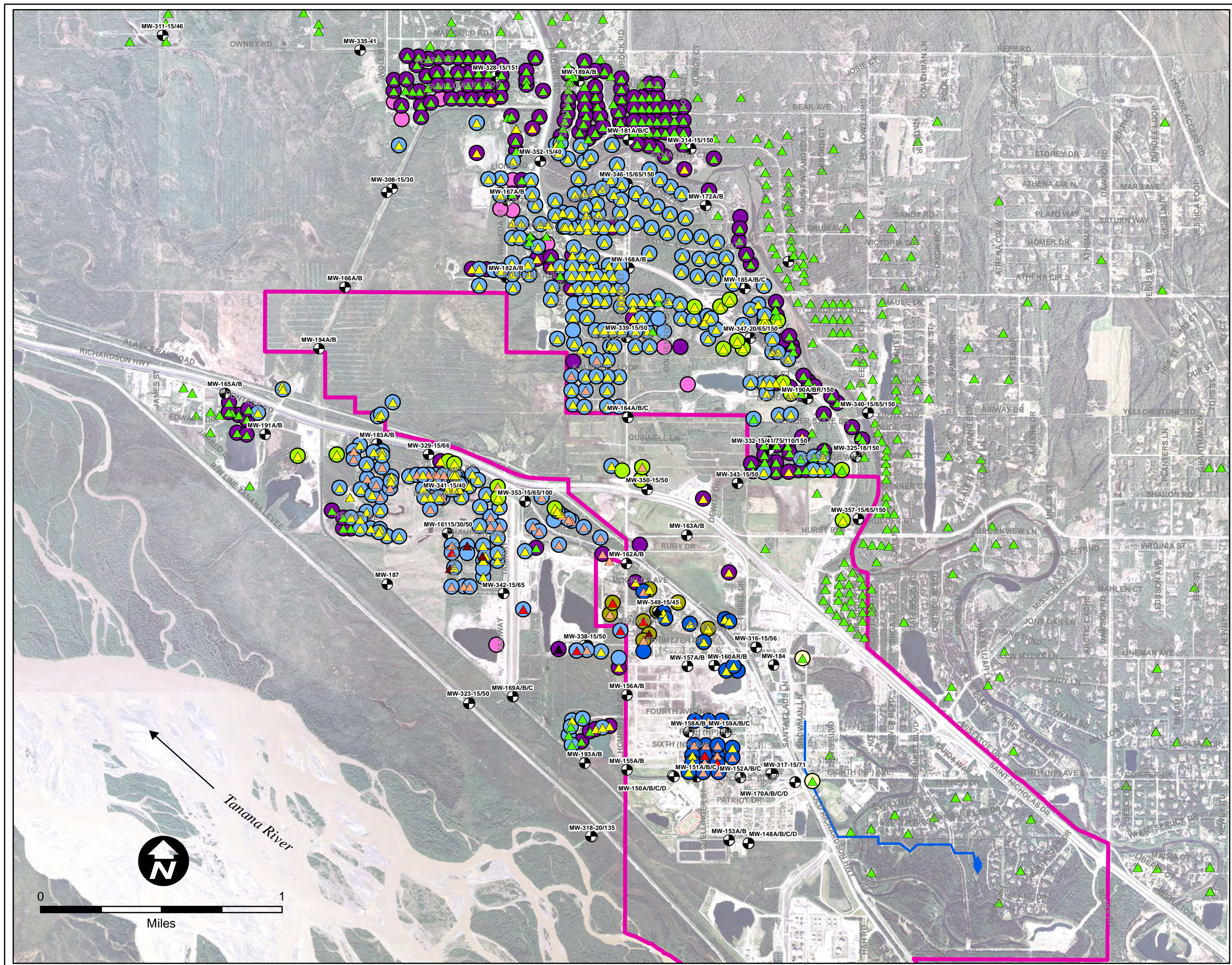
February 2016

31-1-11751-001

**SHANNON & WILSON, INC.**  
 GEOTECHNICAL AND ENVIRONMENTAL CONSULTANTS

**Figure 2**

**Figure 3  
Potable Water Solutions  
Provided by  
Flint Hills Resources**

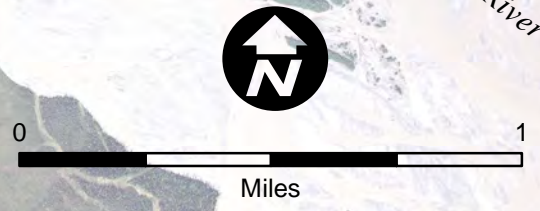


- Legend**
- ▲ Sulfolane Not Detected
  - ▲ 2.50 - 100 µg/L
  - ▲ 100 - 200 µg/L
  - ▲ 200 - 300 µg/L
  - ▲ 300 - 400 µg/L
  - ▲ Greater than 400 µg/L
  - ⊕ Monitoring Well
  - Long Term Alternative Water Solution - Commercial
  - Long Term Alternative Water Solution - Residential
  - City Water Solutions
  - Interim Bottled Water Solution
  - Water Tank Listed As Water Source During Survey (Outside City Limits)
  - Auxiliary Well Sample, City Water Listed As Drinking Water Source During Survey
  - City of North Pole Fire Wells
  - ◆ New NP City Wells
  - Water Main New City Wells
  - ▭ North Pole City Boundary

ppb = parts per billion  
 1 ppb = 1 µg/L (microgram per liter)  
 1 µg/L = 0.00000001 g/L (gram per liter)

\*The latest sulfolane result for a well is presented on this map.

Private Well Results and  
 Solutions as of  
 December 31, 2015



## **Attachment A**

### **2015 Mailings to Property Owners**

## ABOUT

Welcome to the fourth issue of "Be in the Know, North Pole." The purpose of this newsletter is to educate and inform the residents of North Pole on sulfolane in the community. We will send regular newsletters to keep residents in the know about sulfolane and how it affects us all.

Learn more and subscribe to our email newsletter at [www.northpolegroundwater.com](http://www.northpolegroundwater.com).

## STAY INFORMED

Stay informed on what is happening by visiting us online at [www.northpolegroundwater.com](http://www.northpolegroundwater.com). This website is a one-stop shop for residents, realtors and others. While there, sign up to receive our monthly e-mail newsletter.

The Alaska Department of Environmental Conservation has information online as well at [www.dec.alaska.gov](http://www.dec.alaska.gov).



BE IN THE KNOW, NORTH POLE.

The official newsletter keeping North Pole informed and educated on sulfolane and Flint Hills Resources Alaska (FHRA).

## THIS ISSUE:

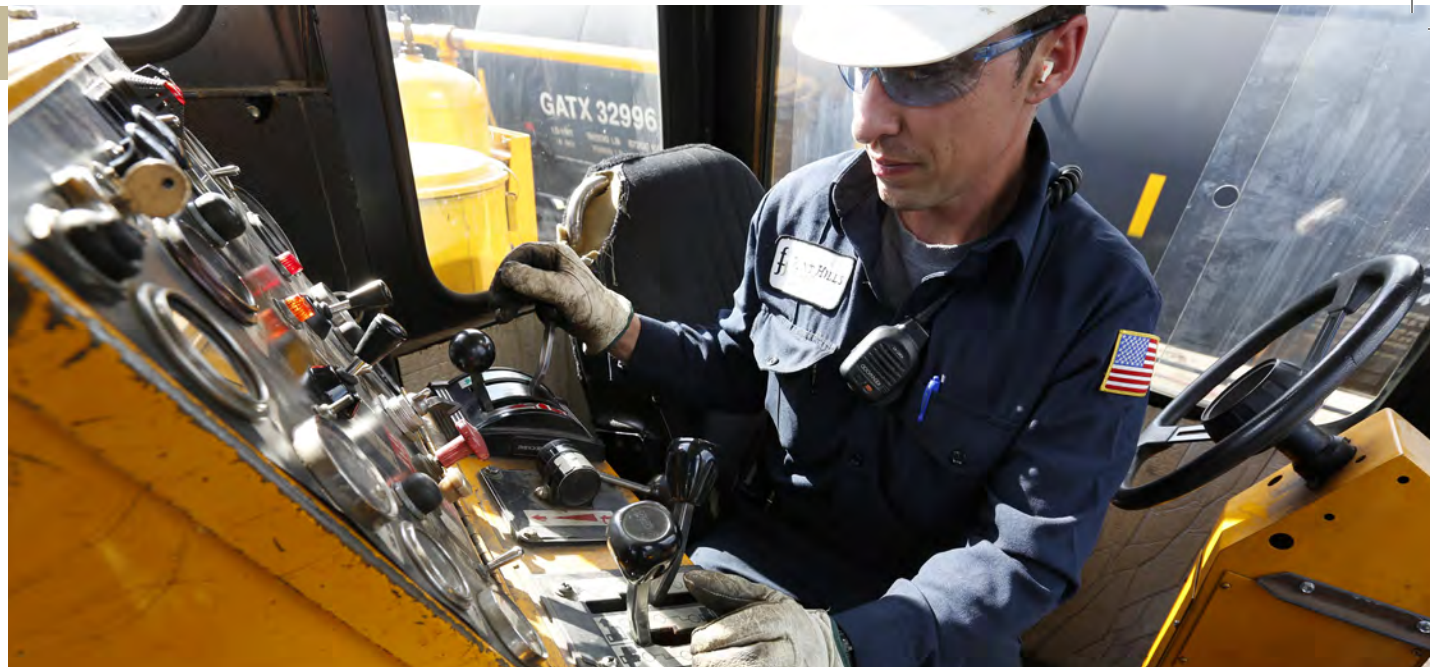
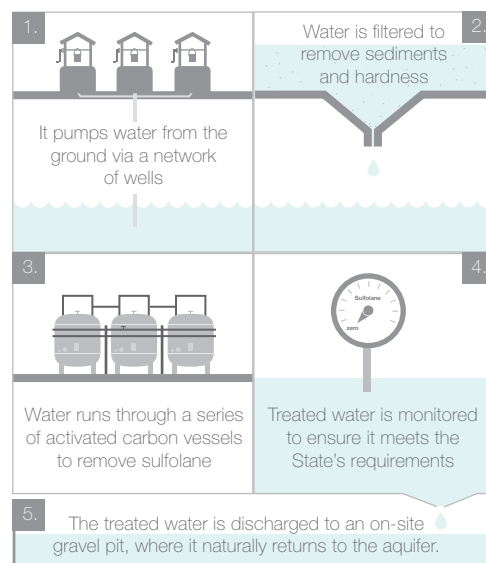
### Pump and Treat System

In June of 2014 FHRA successfully completed the expansion of the Pump & Treat system. The expansion allows FHRA to capture and remove sulfolane in groundwater under the refinery. In addition to the added treatment infrastructure FHRA continues to have a dedicated team of professional staff focused on the success of the groundwater projects.

#### This system:

- Increased current gallons of water treated per day from approximately 500,000 to 800,000
- A total of 237,000,000 gallons of groundwater was treated onsite in 2014
- A total of 811 monitoring well samples collected and analyzed in 2014

**The pump and treat system is actually quite simple. Here's how it works:**



## FHRA RESULTS:



### In 2014, FHRA:

**Delivered 3,440,513** gallons of water to commercial and residential bulk tanks.

**Treated** just over **7,800,000** gallons of water in residential and commercial treatment systems.

**Collected 1,116** water samples from monitoring wells and private wells for testing.

**Supplied 105,675** gallons of bottled water to residents on long term and interim bottled water plans.

**Performed** in excess of **650** service visits to maintain treatment systems.

### In 2015, FHRA plans to:

Continue regular sampling of monitoring wells and conduct the annual buffer zone sampling.

## HERE TO HELP:

FHRA's North Pole Groundwater Office is located in Polar Plaza, next to the North Pole Post Office, at 203 Santa Claus Lane. The staff can send you the most recent copy of your sulfolane test results, answer questions about the sulfolane plume, provide details about summer sampling plans, and answer other questions you may have about sulfolane in North Pole..

You can call FHRA at 488-0723. Or reach Marisa Sharrah, Community Relations Manager at 488-5103 or [Marisa.sharrah@kochps.com](mailto:Marisa.sharrah@kochps.com).

To reach ADEC, contact Kim DeRuyter, Project Manager, Alaska Dept of Environmental Conservation, at 451-2192.

**Please remember:** When selling your home in or near the affected area, homeowners are responsible for disclosure of the sulfolane issue. A licensed realtor is a great resource for assistance through that process.



Hey North Pole,  
**WE'VE MOVED!**

**fj** | FLINT HILLS  
resources®

Alaska





Come visit our new offices at:

**1100 H&H Lane**

here in North Pole.

Our new space will be under construction until early spring, so please excuse any mess.