

Alternative Water Solutions Program-  
 2016 Annual Report  
 North Pole, Alaska

**2016 SULFOLANE PLUME AND  
 MONITORING RESULTS**

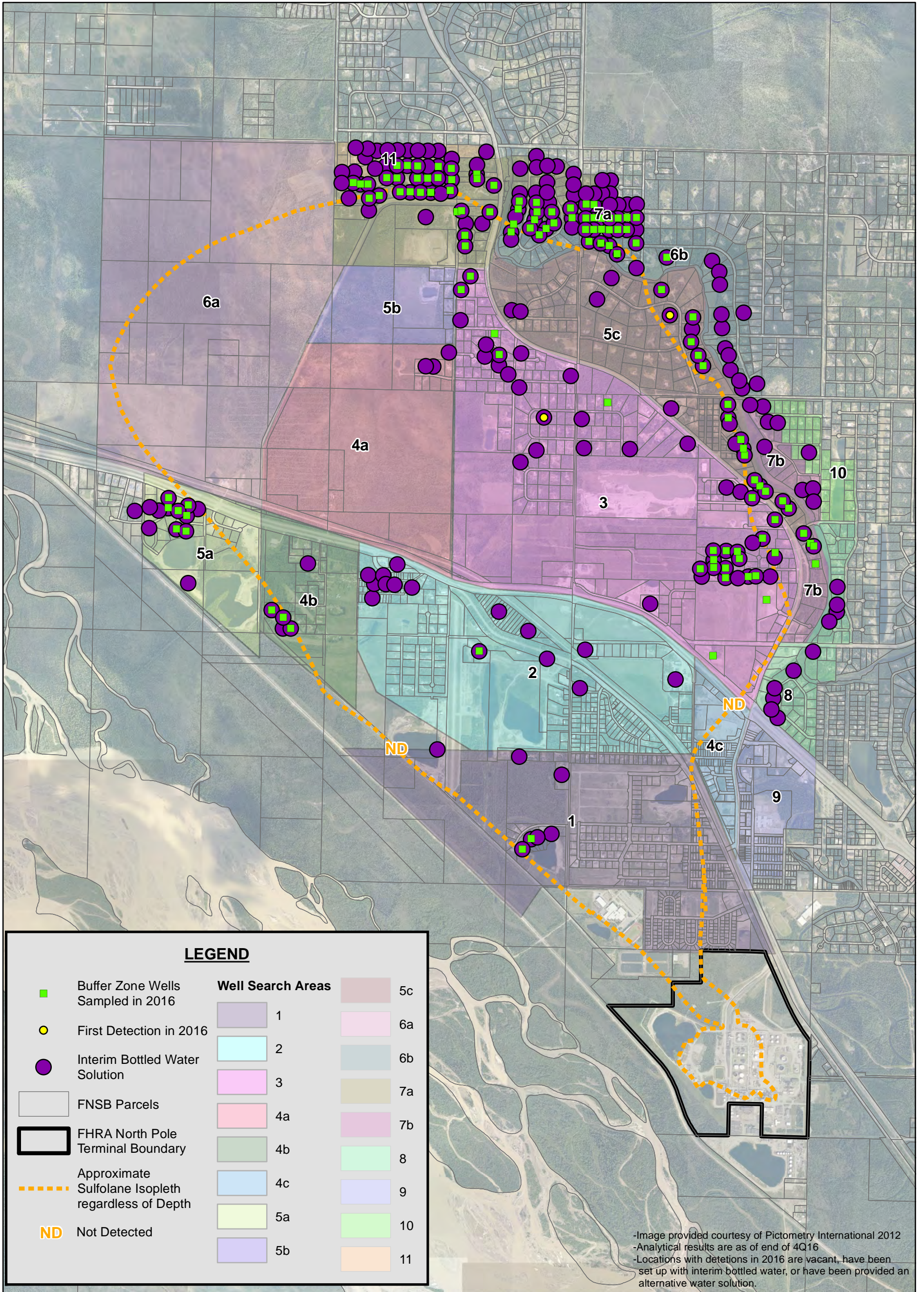
Jan 2017

31-1-11807-001

**SHANNON & WILSON, INC.**  
 GEOTECHNICAL AND ENVIRONMENTAL CONSULTANTS

**Figure 1**





Alternative Water Solutions Program-  
 2016 Annual Report  
 North Pole, Alaska

**2016 BUFFER ZONE AND  
 RESAMPLING AREA**

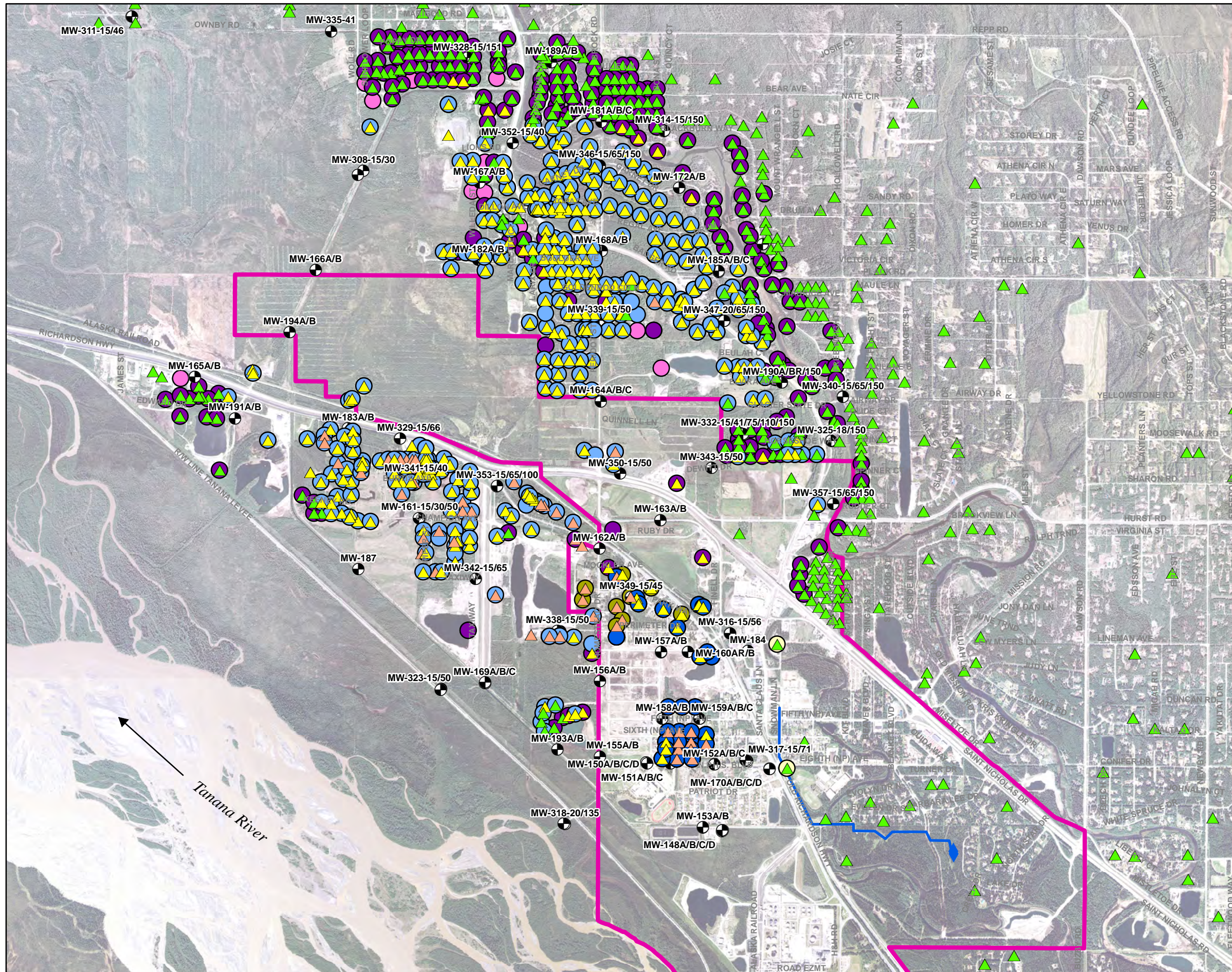
March 2017

31-1-11807-001















**SHANNON & WILSON, INC.**  
 GEOTECHNICAL AND ENVIRONMENTAL CONSULTANTS

**Figure 2**





### Legend

-  Sulfolane Not Detected
-  2.50 - 100 µg/L
-  100 - 1,000 µg/L
-  Monitoring Well
-  City Water Solutions
-  Long Term Alternative Water Solution - Residential Property
-  Long Term Alternative Water Solution - Commercial Property
-  Interim Bottled Water Solution
-  Water Tank Listed As Water Source During Survey (Outside City Limits)
-  Auxiliary Well Sample, City Water Listed As Drinking Water Source During Survey
-  City of North Pole Fire Wells
-  New NP City Wells
-  Water Main New City Wells
-  North Pole City Boundary

Notes:  
 ppb = parts per billion  
 1 ppb = 1 µg/L (microgram per liter)  
 1 µg/L = 0.00000001 g/L (gram per liter)  
 \*The latest sulfolane result for a well is presented on this map, as of December 2016.



Alternative Water Solutions Program -  
 2016 Annual Report  
 North Pole, Alaska

## POTABLE WATER SOLUTIONS PROVIDED BY FLINT HILLS RESOURCES

Feb 2017 31-1-11807-001