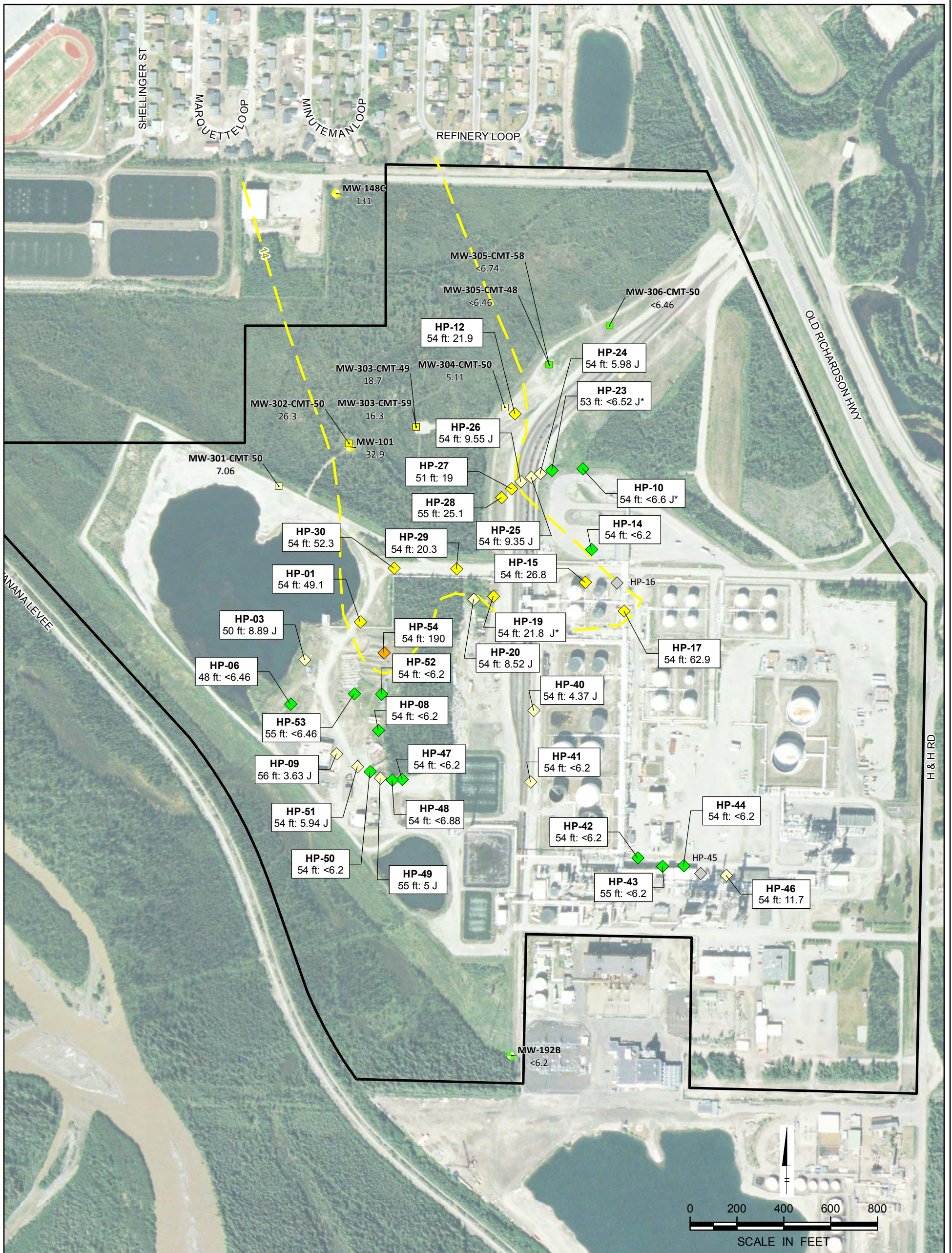


FLINT HILLS RESOURCES, ALASKA, LLC
 NORTH POLE REFINERY, NORTH POLE, ALASKA
 SITE CHARACTERIZATION REPORT - 2012 ADDENDUM

**HYDROPUNCH SULFOLANE RESULTS
 39 - 48 FEET BGS**

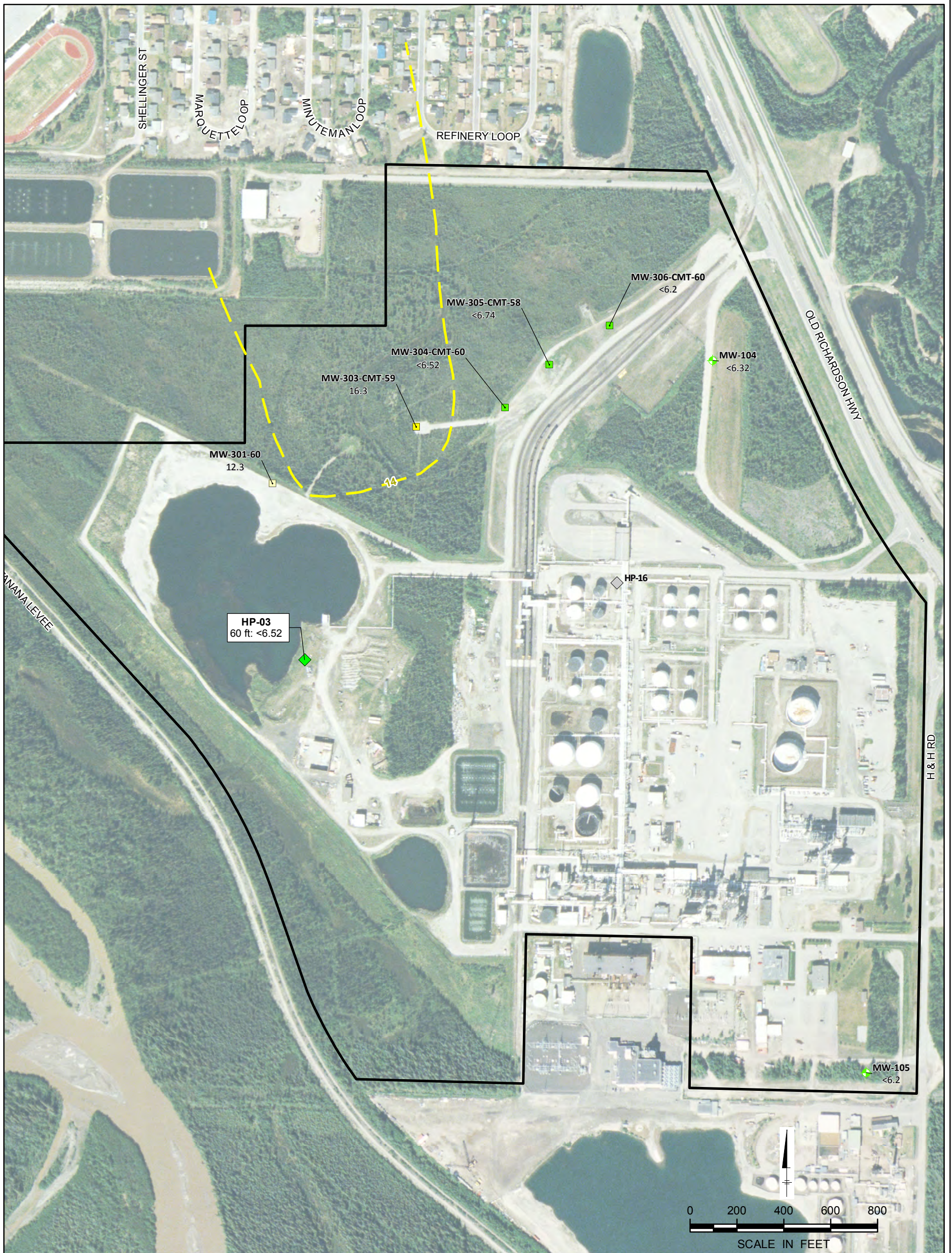


Legend	
Sample Location Types	Sulfolane Result Color-Coding:
● Monitoring Well	■ Non-Detect
○ Observation Well	■ 1.4 - 14 µg/L
◇ Hydropunch	■ 14 - 140 µg/L
	■ 140 - 1,400 µg/L
	■ >1,400 µg/L
	◇ Matrix Interference
	▭ FHRA Property Boundary
	--- Approximate Sulfolane Isopleth in µg/L

Notes:	
µg/L	Micrograms per liter
<	Not detected; limit of detection (LOD) listed
J	Estimated concentration
R	Result rejected due to hydrocarbon interference
JH	Estimated result, biased high
JL	Estimated result, biased low
N	Analysis indicates there is presumptive evidence to make a tentative identification of this compound
*	Data flag applied based on S&W's Level II data assurance review
**	Data flag applied based on ESI's Level IV data assurance review

FLINT HILLS RESOURCES, ALASKA, LLC
 NORTH POLE REFINERY, NORTH POLE, ALASKA
SITE CHARACTERIZATION REPORT - 2012 ADDENDUM

**HYDROPUNCH SULFOLANE RESULTS
 49 - 58 FEET BGS**



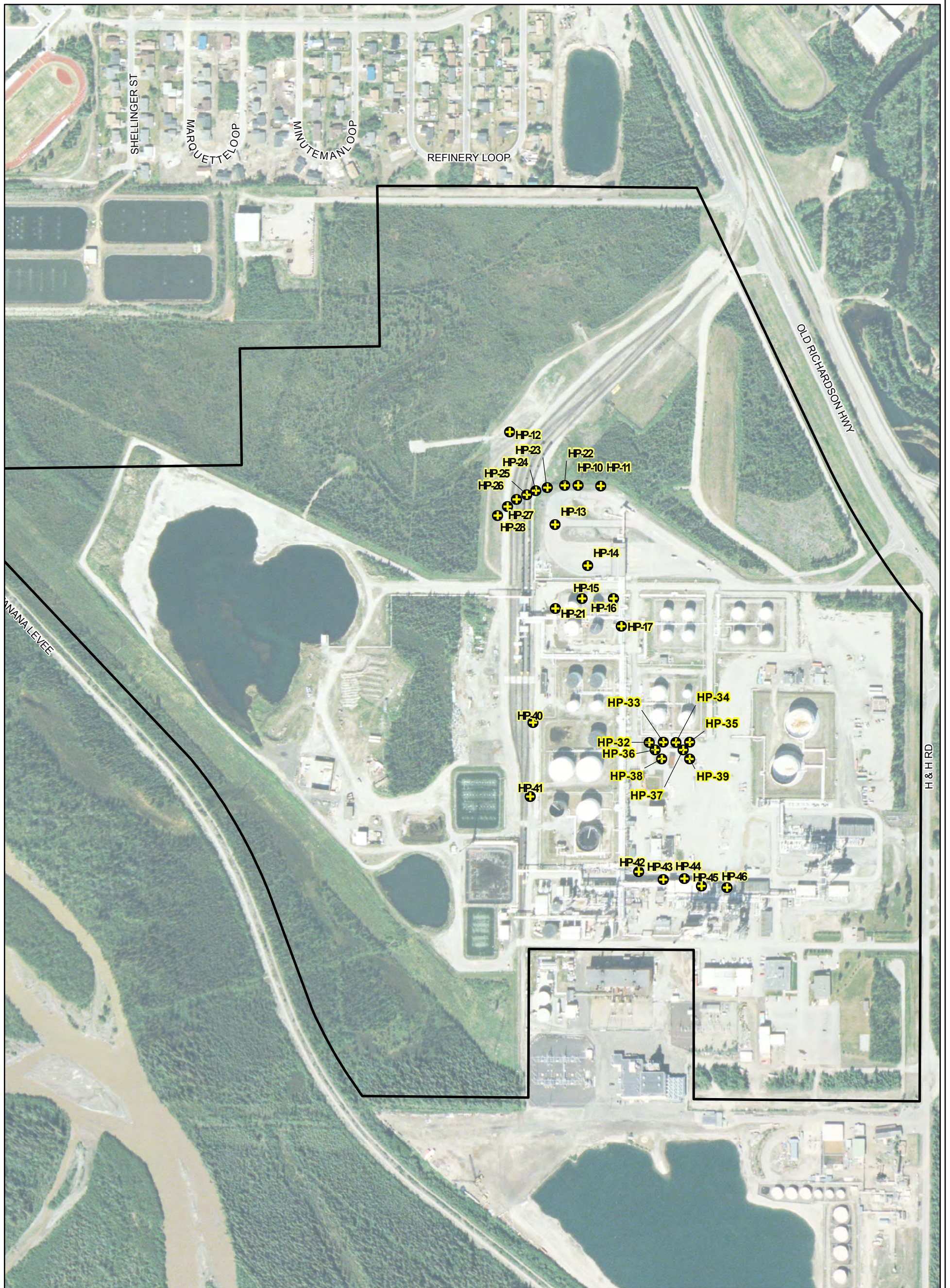
Legend	
●	Monitoring Well
○	Observation Well
◇	Hydropunch
■	Matrix Interference
▭	FHRA Property Boundary
⋯	Approximate Sulfolane Isopleth in µg/L
■	Sulfolane Result Color-Coding:
■	Non-Detect
■	1.4 - 14 µg/L
■	14 - 140 µg/L
■	140 - 1,400 µg/L
■	>1,400 µg/L

Notes:
 µg/L Micrograms per liter
 < Not detected; limit of detection (LOD) listed
 J Estimated concentration
 R Result rejected due to hydrocarbon interference
 JH Estimated result, biased high
 JL Estimated result, biased low
 N Analysis indicates there is presumptive evidence to make a tentative identification of this compound
 * Data flag applied based on S&W's Level II data assurance review
 ^* Data flag applied based on ES's Level IV data assurance review

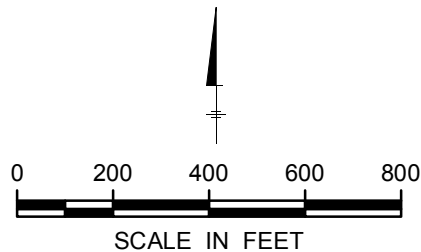
FLINT HILLS RESOURCES, ALASKA, LLC
 NORTH POLE REFINERY, NORTH POLE, ALASKA
SITE CHARACTERIZATION REPORT - 2012 ADDENDUM

**HYDROPUNCH SULFOLANE RESULTS
 59 - 62 FEET BGS**

FIGURE **13**



- Legend**
- + Hydropunch Location
 - FHRA Property Boundary



Notes:
 Borings HP-1 through HP-31 will be advanced to refusal.
 Borings HP-32 through HP-46 will be advanced to refusal or 25 feet bgs, whichever is encountered first.

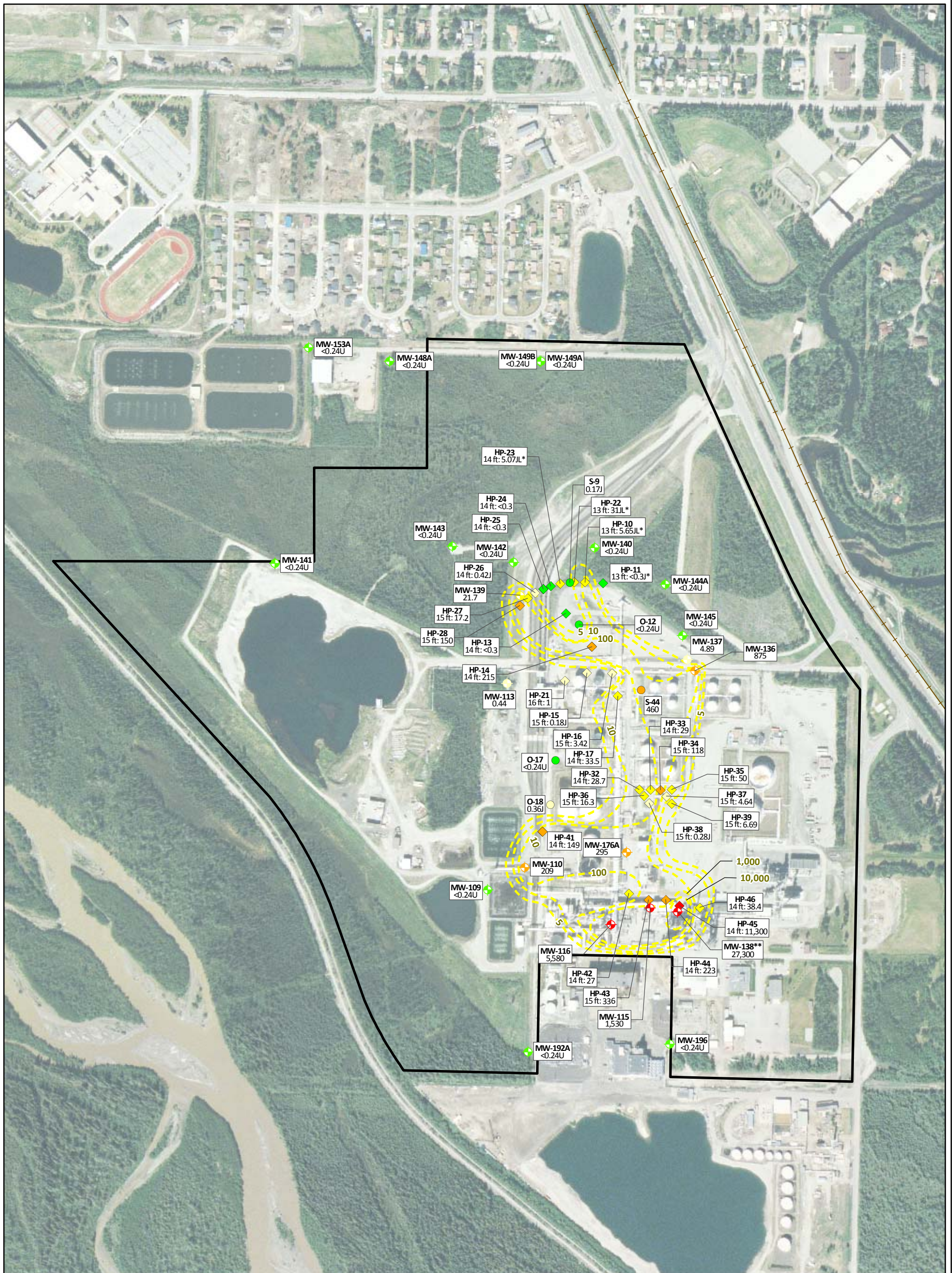
FLINT HILLS RESOURCES, ALASKA, LLC
 NORTH POLE REFINERY, NORTH POLE, ALASKA
SITE CHARACTERIZATION REPORT - 2012 ADDENDUM

BENZENE HYDROPUNCH SAMPLE LOCATIONS



FIGURE

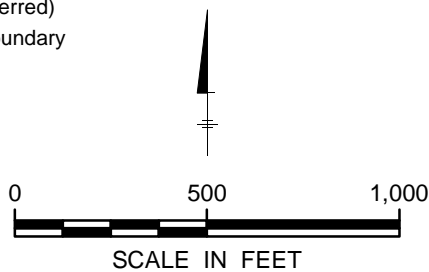
14



Legend

- | | | |
|---|--|--|
| <p>Sample Location Types</p> <ul style="list-style-type: none"> ◆ Monitoring Well ○ Observation Well ◇ Hydropunch <p>Notes:</p> <p>Results are displayed in µg/L</p> | <p>Benzene Result Color-Coding:</p> <ul style="list-style-type: none"> ■ Non-Detect ■ 0.17 - 5 µg/L ■ 5 - 100 µg/L ■ 100 - 1,000 µg/L ■ >1,000 µg/L | <p>Benzene Isopleth in µg/L
(Dashed where inferred)</p> <ul style="list-style-type: none"> ▭ FHR Property Boundary |
|---|--|--|

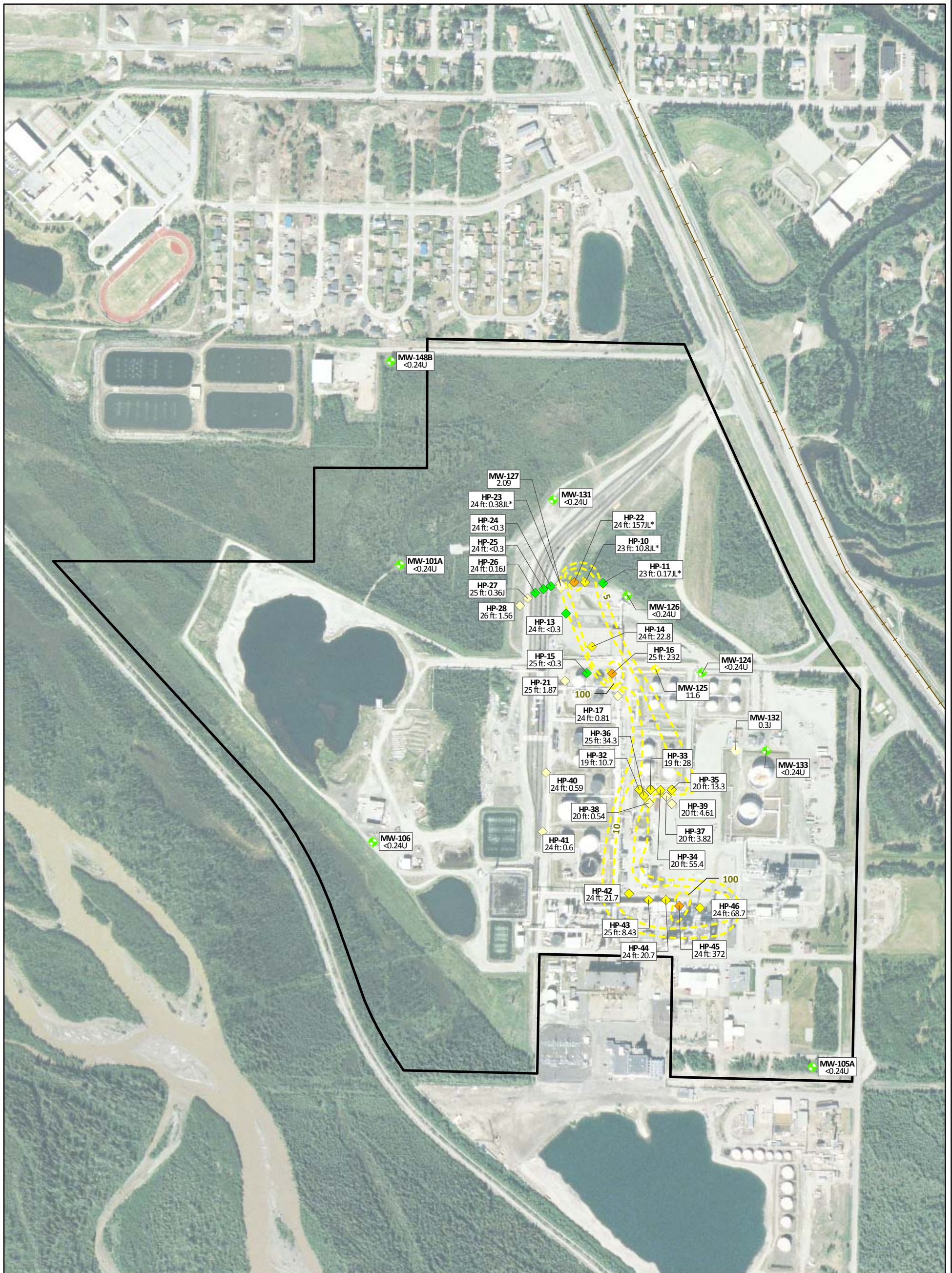
J Estimated concentration, detected above the detection limit (DL) and below the limit of quantitation (LOQ)
 JL* Result is considered estimate, biased low due to QC failures
 J* Result considered an estimate; field-duplicate RPD did not meet data-quality objectives
 * Total xylenes calculated based on individual results
 ** Sheen noted on sample
 < Not detected; detection limit listed



FLINT HILLS RESOURCES ALASKA, LLC
 NORTH POLE REFINERY, NORTH POLE, ALASKA
SITE CHARACTERIZATION REPORT - 2012 ADDENDUM

**HYDROPUNCH BENZENE RESULTS
 12 - 18 FEET BGS**

	<p>FIGURE 15</p>
---	-----------------------------

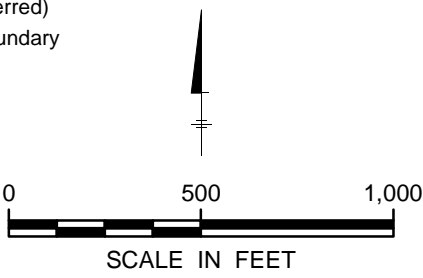


Legend

Sample Location Types	Benzene Result Color-Coding:	Benzene Isopleth in µg/L (Dashed where inferred)
◆ Monitoring Well	■ Non-Detect	— FHRA Property Boundary
○ Observation Well	■ 0.17 - 5 µg/L	
◇ Hydropunch	■ 5 - 100 µg/L	
	■ 100 - 1,000 µg/L	
	■ >1,000 µg/L	

Notes:
 Results are displayed in µg/L

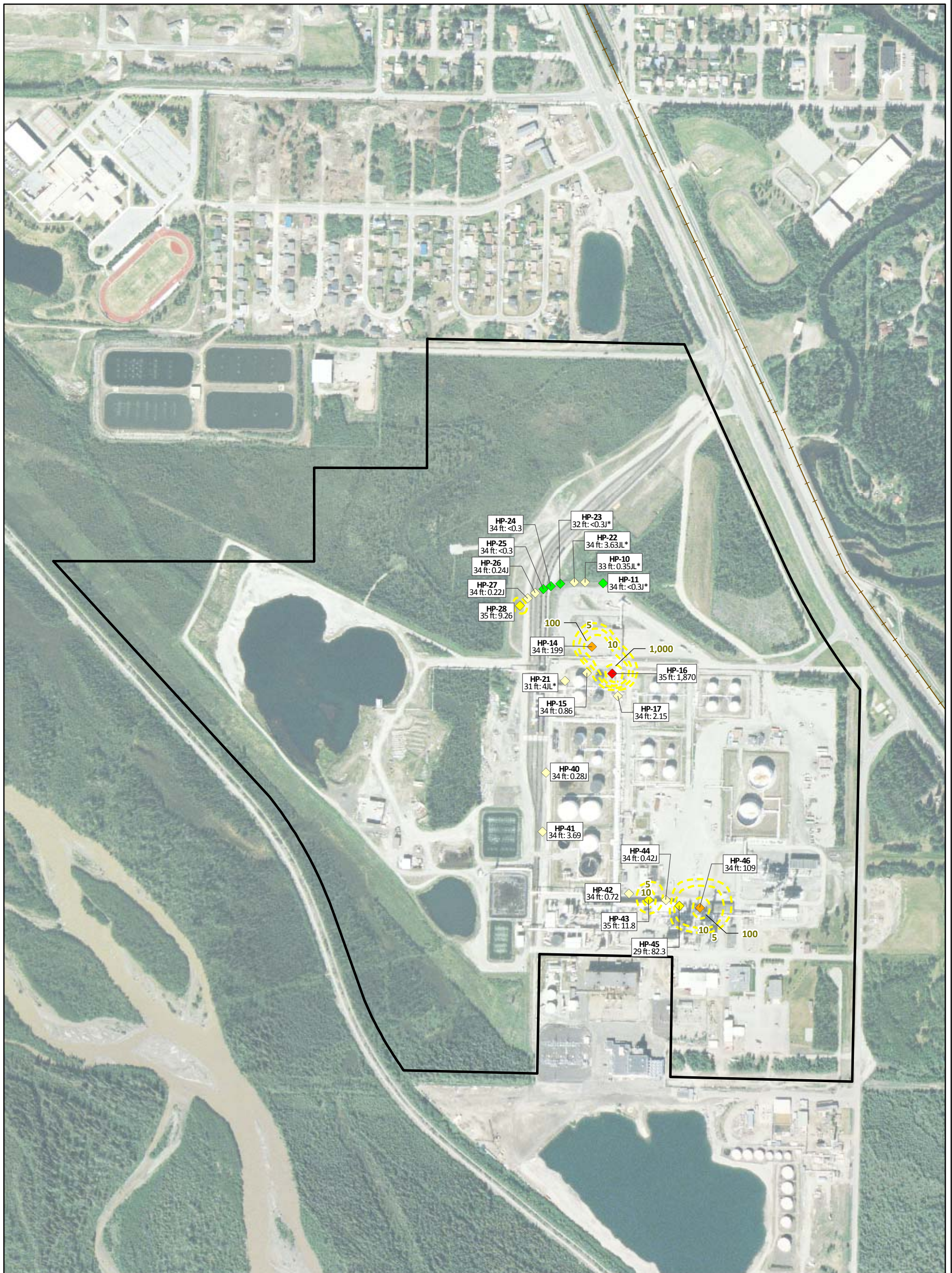
J Estimated concentration, detected above the detection limit (DL) and below the limit of quantitation (LOQ)
 JL* Result is considered estimate, biased low due to QC failures
 J* Result considered an estimate; field-duplicate RPD did not meet data-quality objectives
 * Total xylenes calculated based on individual results
 < Not detected; detection limit listed



FLINT HILLS RESOURCES ALASKA, LLC
 NORTH POLE REFINERY, NORTH POLE, ALASKA
SITE CHARACTERIZATION REPORT - 2012 ADDENDUM

**HYDROPUNCH BENZENE RESULTS
 19 - 28 FEET BGS**

FIGURE
16

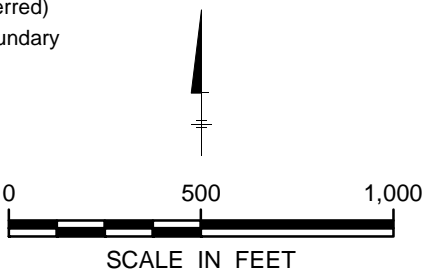


Legend

Sample Location Types	Benzene Result Color-Coding:	Benzene Isopleth in µg/L (Dashed where inferred)
Monitoring Well	Non-Detect	FHRA Property Boundary
Observation Well	0.17 - 5 µg/L	
Hydropunch	5 - 100 µg/L	
	100 - 1,000 µg/L	
	>1,000 µg/L	

Notes:
 Results are displayed in µg/L

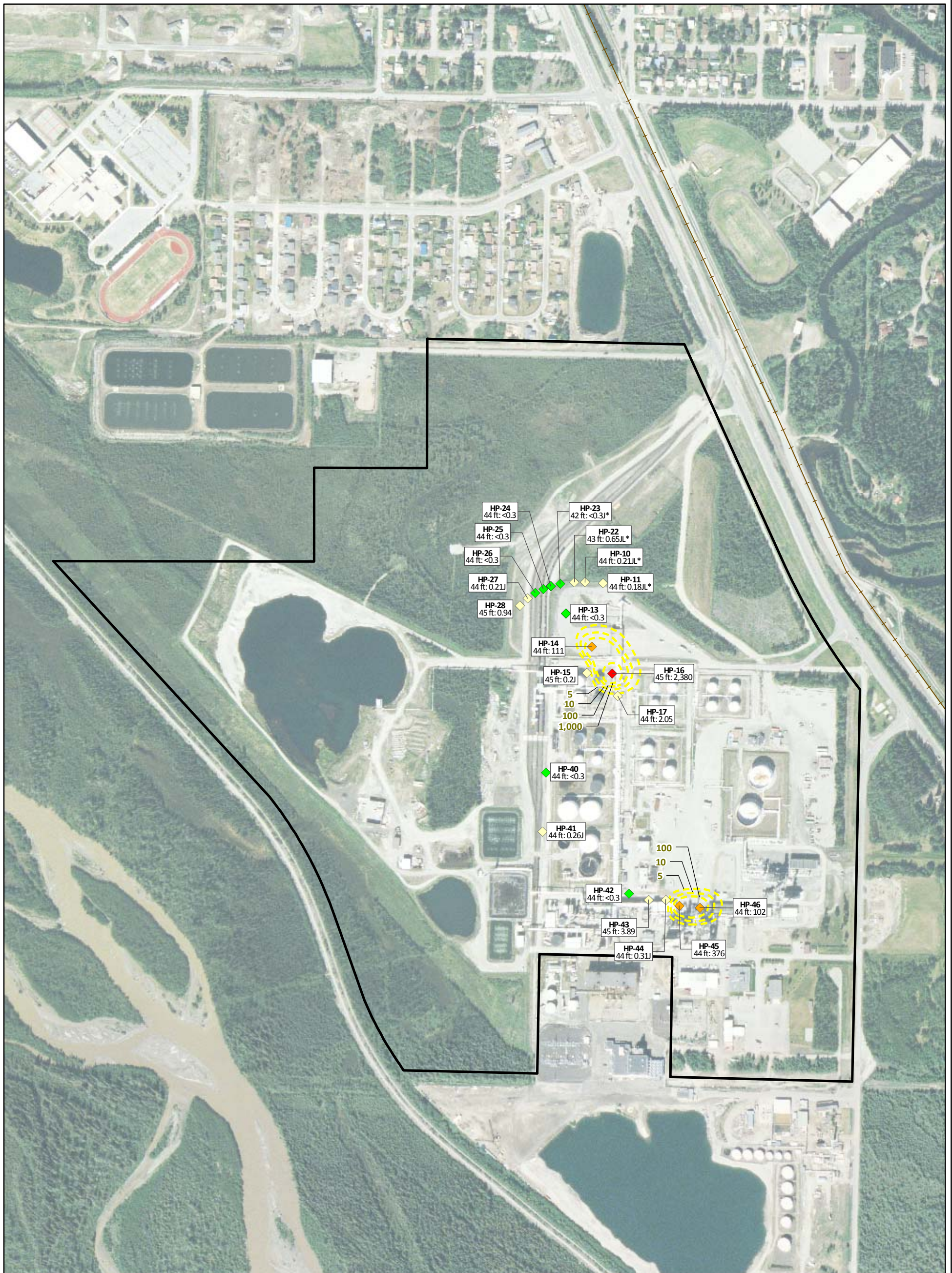
J Estimated concentration, detected above the detection limit (DL) and below the limit of quantitation (LOQ)
 JL* Result is considered estimate, biased low due to QC failures
 J* Result considered an estimate; field-duplicate RPD did not meet data-quality objectives
 * Total xylenes calculated based on individual results
 < Not detected; detection limit listed



FLINT HILLS RESOURCES ALASKA, LLC
 NORTH POLE REFINERY, NORTH POLE, ALASKA
SITE CHARACTERIZATION REPORT - 2012 ADDENDUM

**HYRDOPUNCH BENZENE RESULTS
 29 - 38 FEET BGS**

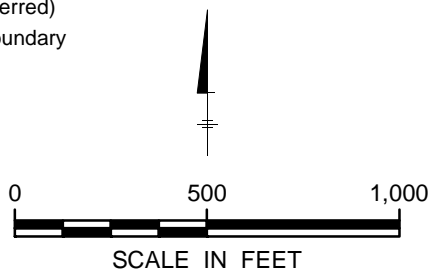
FIGURE
17



Legend	
Sample Location Types	Benzene Result Color-Coding:
Monitoring Well (black diamond)	Non-Detect (green)
Observation Well (white circle)	0.17 - 5 µg/L (yellow)
Hydropunch (white diamond)	5 - 100 µg/L (orange)
	100 - 1,000 µg/L (red)
	>1,000 µg/L (dark red)
	Benzene Isopleth in µg/L (Dashed where inferred) (yellow dashed line)
	FHRA Property Boundary (black outline)

Notes:
 Results are displayed in µg/L

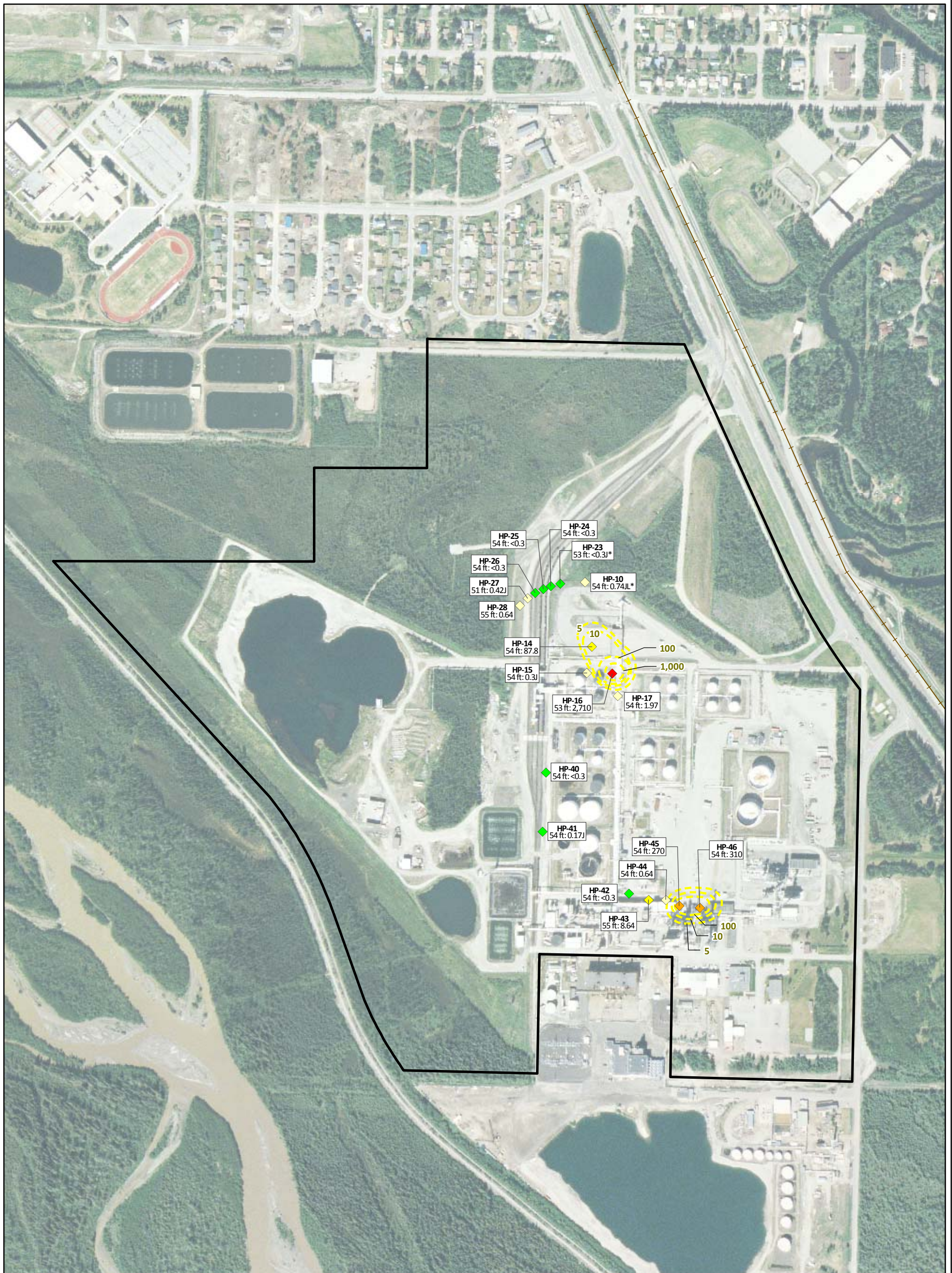
J Estimated concentration, detected above the detection limit (DL) and below the limit of quantitation (LOQ)
 JL* Result is considered estimate, biased low due to QC failures
 J* Result considered an estimate; field-duplicate RPD did not meet data-quality objectives
 * Total xylenes calculated based on individual results
 < Not detected; detection limit listed



FLINT HILLS RESOURCES ALASKA, LLC
 NORTH POLE REFINERY, NORTH POLE, ALASKA
 SITE CHARACTERIZATION REPORT - 2012 ADDENDUM

**HYRDOPUNCH BENZENE RESULTS
 39 - 48 FEET BGS**

FIGURE **18**



Legend

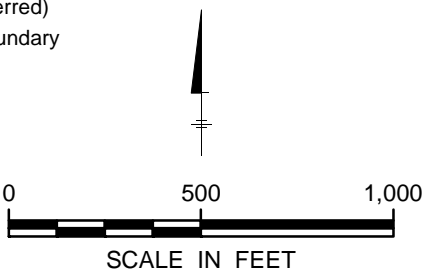
Sample Location Types:
 ◆ Monitoring Well
 ○ Observation Well
 ◇ Hydropunch

Benzene Result Color-Coding:
 ■ Non-Detect
 ■ 0.17 - 5 µg/L
 ■ 5 - 100 µg/L
 ■ 100 - 1,000 µg/L
 ■ >1,000 µg/L

Benzene Isopleth in µg/L (Dashed where inferred)
 □ FHR Property Boundary

Notes:
 Results are displayed in µg/L

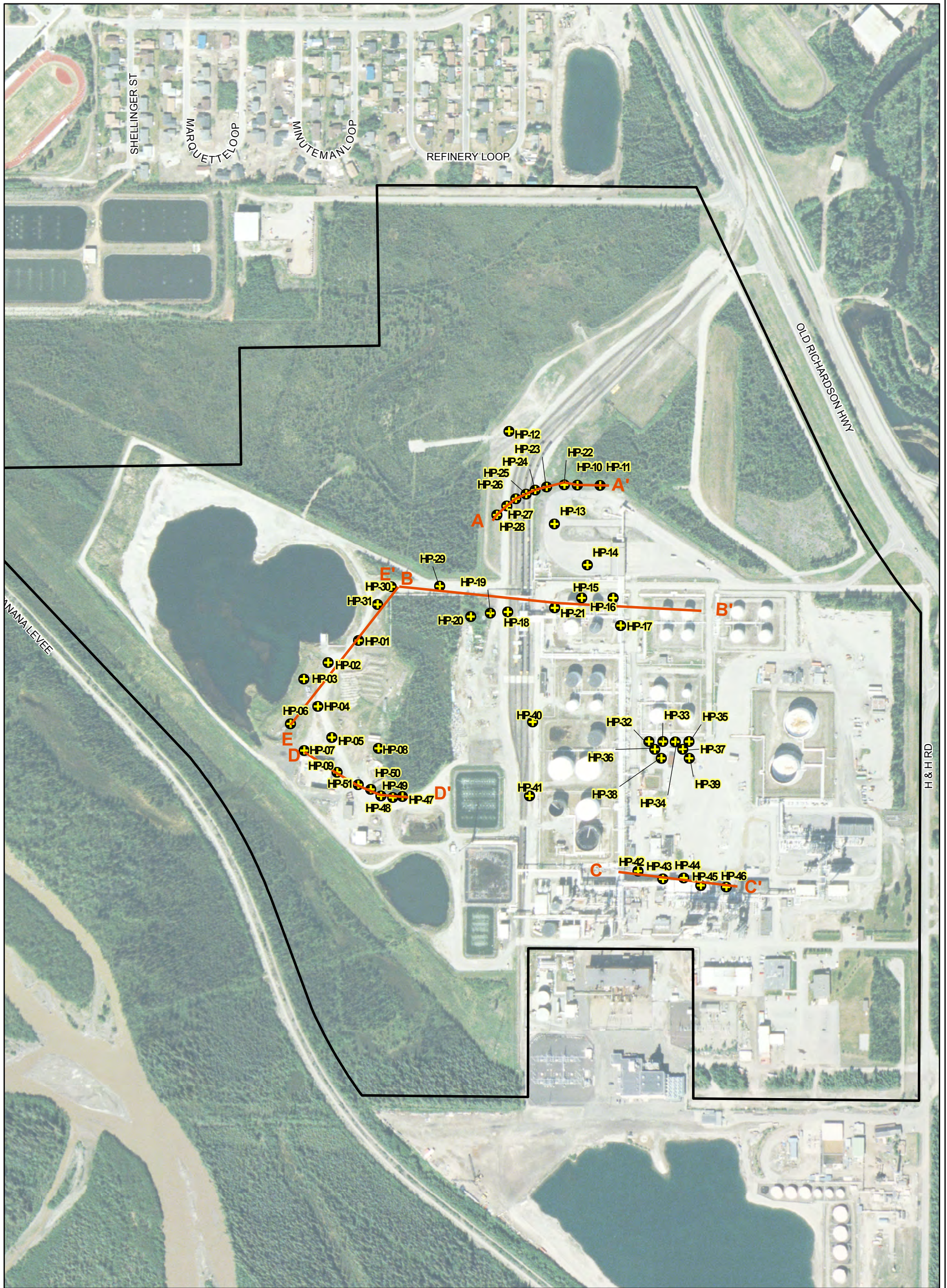
J Estimated concentration, detected above the detection limit (DL) and below the limit of quantitation (LOQ)
 JL* Result is considered estimate, biased low due to QC failures
 J* Result considered an estimate; field-duplicate RPD did not meet data-quality objectives
 * Total xylenes calculated based on individual results
 < Not detected; detection limit listed



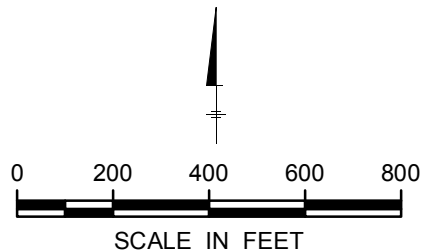
FLINT HILLS RESOURCES ALASKA, LLC
 NORTH POLE REFINERY, NORTH POLE, ALASKA
 SITE CHARACTERIZATION REPORT - 2012 ADDENDUM

**HYDROPUNCH BENZENE RESULTS
 49 - 58 FEET BGS**

FIGURE
19



- Legend**
- Cross-Section Location
 - + Hydropunch Location
 - FHRA Property Boundary

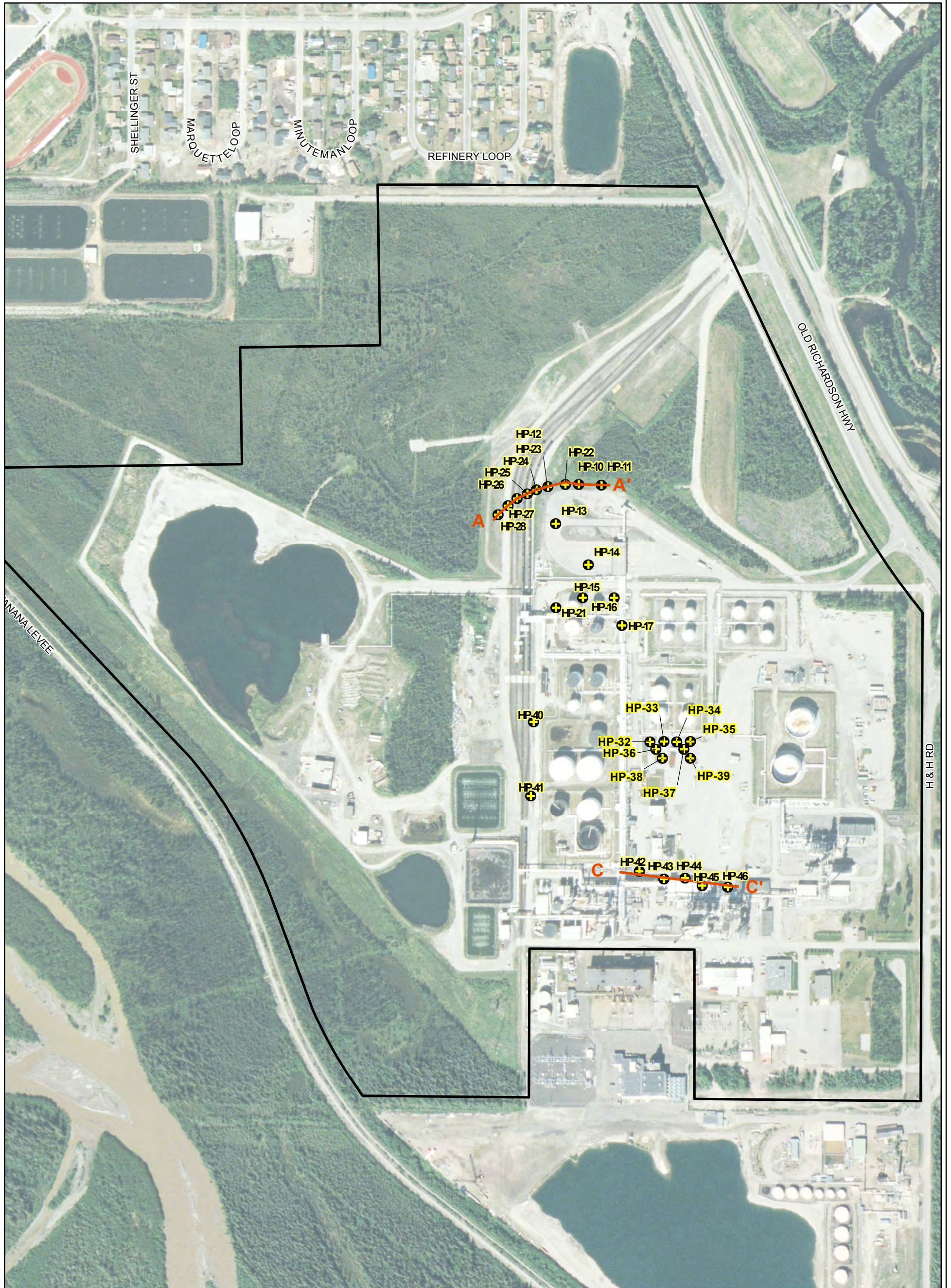


Notes:
 Borings HP-1 through HP-31 will be advanced to refusal.
 Borings HP-32 through HP-46 will be advanced to refusal or 25 feet bgs, whichever is encountered first.

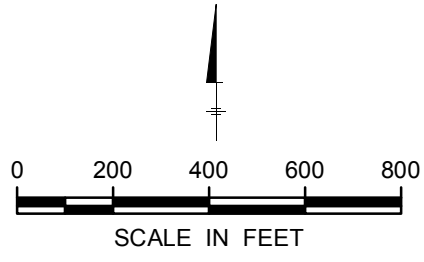
FLINT HILLS RESOURCES, ALASKA, LLC
 NORTH POLE REFINERY, NORTH POLE, ALASKA
SITE CHARACTERIZATION REPORT - 2012 ADDENDUM

**SULFOLANE DATA
 CROSS-SECTION LOCATION
 PLAN VIEW**





- Legend**
- Cross-Section Location
 - + Hydropunch Location
 - FHRA Property Boundary

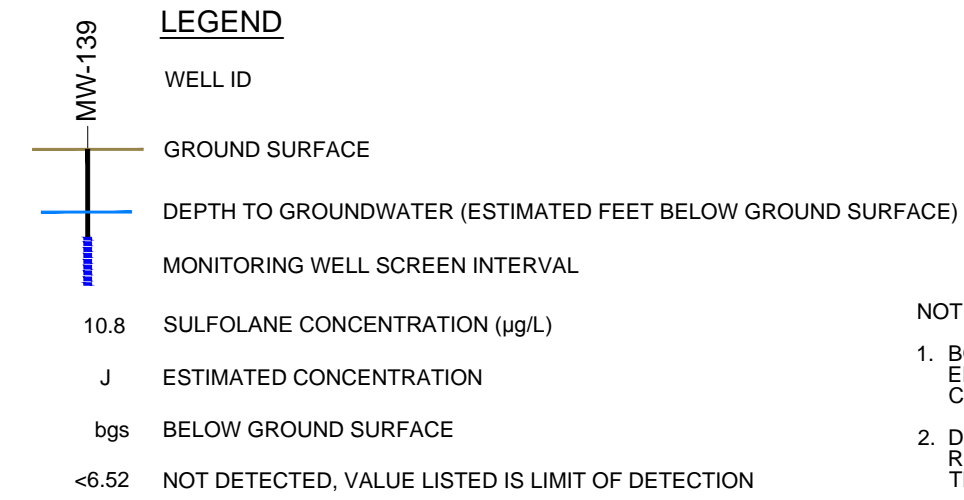
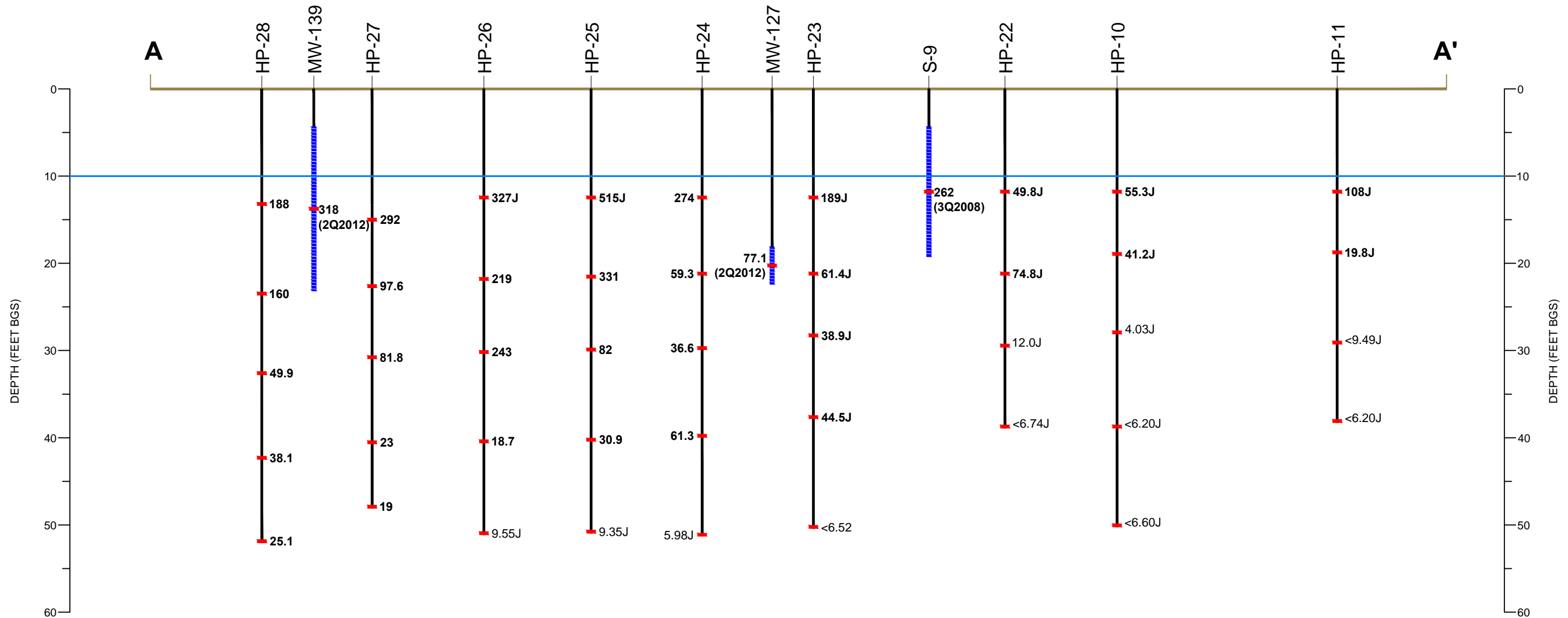


Notes:
 Borings HP-1 through HP-31 will be advanced to refusal.
 Borings HP-32 through HP-46 will be advanced to refusal or 25 feet bgs, whichever is encountered first.

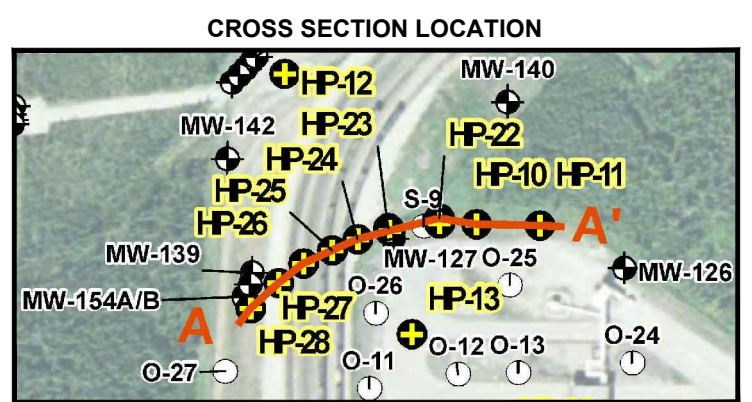
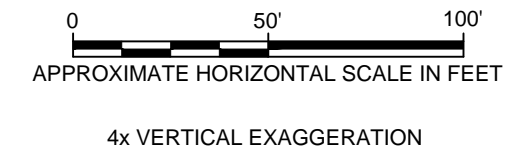
FLINT HILLS RESOURCES, ALASKA, LLC
 NORTH POLE REFINERY, NORTH POLE, ALASKA
SITE CHARACTERIZATION REPORT - 2012 ADDENDUM

**BENZENE DATA
 CROSS-SECTION LOCATION
 PLAN VIEW**





- NOTES:
- BOLDED VALUES EXCEED ALASKA DEPARTMENT OF ENVIRONMENTAL CONSERVATION ALTERNATIVE CLEAN UP LEVEL FOR SULFOLANE (14 µg/L).
 - DEPTH TO WATER IS APPROXIMATE AND DOES NOT REFLECT ACTUAL GROUNDWATER CONDITIONS AT THE LOCATIONS DEPICTED IN THIS FIGURE.



NORTH POLE REFINERY
 FLINT HILLS RESOURCES ALASKA, LLC
**SITE CHARACTERIZATION REPORT -
 2012 ADDENDUM**

SULFOLANE CROSS SECTION A-A'

FIGURE
22