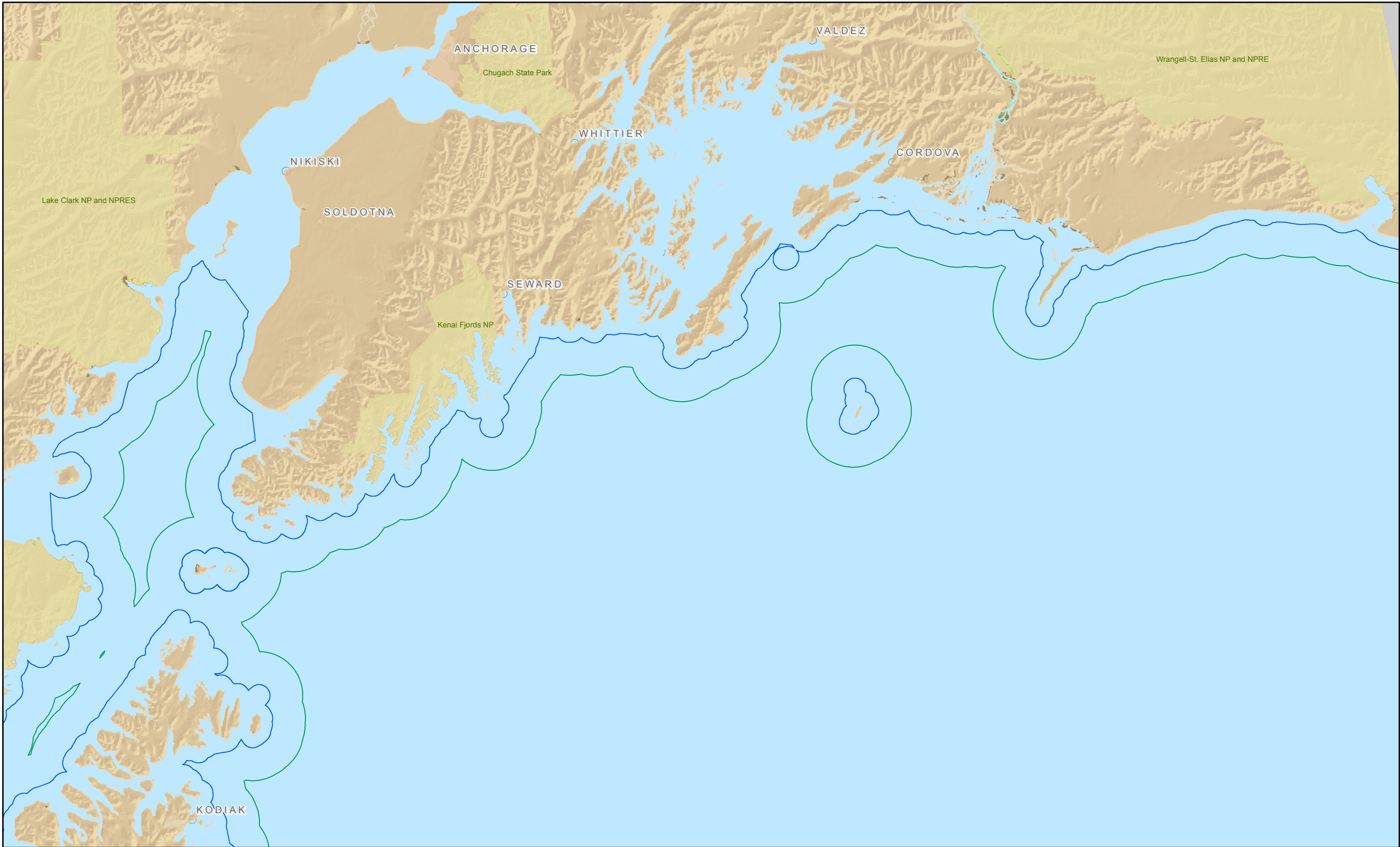


# Prince William Sound and Cook Inlet Discharge Limits



**Distance from Land**

- 3 Nautical Miles (Alaskan Waters)
- 12 Nautical Miles (US Territorial Seas)



Where a large cruise ship can discharge depends on the type of discharge and how it is covered by state and federal laws and regulations. For example, Title XIV (the "Murkowski law") allowed the state of Alaska to regulate wastewater discharge for large cruise ships within Alaskan waters and also within some areas in the Alexander Archipelago that are outside of 3 nautical miles but within US territorial waters.