

Table 2-1 - Historical Groundwater PFOS, PFOA, and PFBS Analytical Results  
 USAEC PFAS Preliminary Assessment/Site Inspection  
 Fort Wainwright, Alaska



Sample ID	1032	Fire Well 1032	Fire Well 1032	Fire Well 1032	Fire Well 1032	Fire Well 1032	Fire Well 1032	Fire Well 1032	Fire Well 1032	Fire Well 1032	Fire Well 1032	3405	Fire Well 3405	
Location	Bldg 1032	Bldg 1032	Bldg 1032	Bldg 1032	Fire Well 1032	Fire Well 1032	Fire Well 1032	Fire Well 1032	Fire Well 1032	Fire Well 1032	Fire Well 1032	Bldg 3405	Bldg 3405	
Laboratory	Pollen	Pollen	Pollen	Pollen	Pollen	Pollen	Pollen	Pollen	Pollen	Pollen	Pollen	Pollen	Pollen	
Sample Date	10/16/2017	6/20/2018	9/12/2018	11/7/2018	2/12/2019	4/17/2019	7/17/2019	10/2/2019	3/18/2020	4/15/2020	7/12/2020	10/16/2017	6/20/2018	
Sample Type	N	N	N	N	N	N	N	N	N	N	N	N	N	
Analyte (µg/L)	OSD Risk Screening Level (µg/L)													
Perfluorooctane Sulfonate (PFOS)	0.040	<b>0.0094</b>	<b>0.0089</b>	<b>0.016</b>	<b>0.014</b>	<b>0.014</b>	<b>0.016</b>	<b>0.0065</b>	<b>0.011</b>	<b>0.013</b>	<b>0.013</b>	<b>0.015</b>	< 0.002	< 0.002
Perfluorooctanoic acid (PFOA)	0.040	<b>0.0032</b>	<b>0.0052</b>	<b>0.0087</b>	<b>0.0073</b>	<b>0.0075</b>	<b>0.0083</b>	<b>0.0035</b>	<b>0.0056</b>	<b>0.0071</b>	<b>0.007</b>	<b>0.0072</b>	< 0.002	< 0.002
Perfluorobutane Sulfonate (PFBS)	0.600	NA	NA	NA	NA	NA	NA	NA	NA	NA	NA	NA	NA	NA
Perfluorobutyric acid (PFBTA)	NA	NA	NA	NA	NA	NA	NA	NA	NA	NA	NA	NA	NA	NA
Perfluorodecane Sulfonate (PFDCS)	NA	NA	NA	NA	NA	NA	NA	NA	NA	NA	NA	NA	NA	NA
Perfluorododecanoic acid (PFDOA)	NA	NA	NA	NA	NA	NA	NA	NA	NA	NA	NA	NA	NA	NA
Perfluorohexanoic acid (PFHA)	NA	NA	NA	NA	NA	NA	NA	NA	NA	NA	NA	NA	NA	NA
Perfluoroheptanoic acid (PFHPA)	NA	NA	NA	NA	NA	NA	NA	NA	NA	NA	NA	NA	NA	NA
Perfluorohexane Sulfonate (PFHXS)	NA	NA	NA	NA	NA	NA	NA	NA	NA	NA	NA	NA	NA	NA
Perfluorononanoic acid (PFNA)	NA	NA	NA	NA	NA	NA	NA	NA	NA	NA	NA	NA	NA	NA
Perfluorodecanoic acid (PFNDCA)	NA	NA	NA	NA	NA	NA	NA	NA	NA	NA	NA	NA	NA	NA
Perfluorooctane Sulfonamide (PFOSA)	NA	NA	NA	NA	NA	NA	NA	NA	NA	NA	NA	NA	NA	NA
Perfluoropentanoic acid (PFPA)	NA	NA	NA	NA	NA	NA	NA	NA	NA	NA	NA	NA	NA	NA
Perfluorotetradecanoic acid (PFTEDA)	NA	NA	NA	NA	NA	NA	NA	NA	NA	NA	NA	NA	NA	NA
Perfluorotridecanoic acid (PFTRIDA)	NA	NA	NA	NA	NA	NA	NA	NA	NA	NA	NA	NA	NA	NA
Perfluoroundecanoic acid (PFUNDCA)	NA	NA	NA	NA	NA	NA	NA	NA	NA	NA	NA	NA	NA	NA

Table 2-1 - Historical Groundwater PFOS, PFOA, and PFBS Analytical Results  
 USAEC PFAS Preliminary Assessment/Site Inspection  
 Fort Wainwright, Alaska



Sample ID	Fire Well 3405	Fire Well 3405	Fire Well 3405	Fire Well 3405	Fire Well 3405	Fire Well 3405	Fire Well 3405	Fire Well 3405	Fire Well 3405	Fire Well 3405	Bldg 3559 Main Well	Bldg 3559A	Bldg 3559A	Bldg 3559A	
Location	Bldg 3405	Bldg 3405	Bldg 3405	Bldg 3405	Bldg 3405	Bldg 3405	Bldg 3405	Bldg 3405	Bldg 3405	Bldg 3405	Bldg 3559	Bldg 3559A	Bldg 3559A	Bldg 3559A	
Laboratory	Pollen	Pollen	Pollen	Pollen	Pollen	Pollen	Pollen	Pollen	Pollen	Pollen	Pollen	Pollen	Pollen	Pollen	
Sample Date	8/22/2018	11/7/2018	2/6/2019	4/17/2019	7/17/2019	10/2/2019	3/18/2020	4/15/2020	7/12/2020	8/22/2018	9/18/2018	11/7/2018	1/29/2019		
Sample Type	N	N	N	N	N	N	N	N	N	N	N	N	N		
Analyte (µg/L)	OSD Risk Screening Level (µg/L)														
Perfluorooctane Sulfonate (PFOS)	0.040	< 0.002	< 0.002	< 0.002	< 0.002	< 0.002	< 0.002	< 0.002	< 0.002	< 0.002	< 0.002	<b>0.0023</b>	<b>0.0022</b>	<b>0.0021</b>	<b>0.0026</b>
Perfluorooctanoic acid (PFOA)	0.040	< 0.002	< 0.002	< 0.002	< 0.002	< 0.002	< 0.002	< 0.002	< 0.002	< 0.002	< 0.002	< 0.002	< 0.002	< 0.002	< 0.002
Perfluorobutane Sulfonate (PFBS)	0.600	NA	NA	NA	NA	NA	NA	NA	NA	NA	NA	NA	NA	NA	NA
Perfluorobutyric acid (PFBTA)	NA	NA	NA	NA	NA	NA	NA	NA	NA	NA	NA	NA	NA	NA	NA
Perfluorodecane Sulfonate (PFDCS)	NA	NA	NA	NA	NA	NA	NA	NA	NA	NA	NA	NA	NA	NA	NA
Perfluorododecanoic acid (PFDOA)	NA	NA	NA	NA	NA	NA	NA	NA	NA	NA	NA	NA	NA	NA	NA
Perfluorohexanoic acid (PFHA)	NA	NA	NA	NA	NA	NA	NA	NA	NA	NA	NA	NA	NA	NA	NA
Perfluoroheptanoic acid (PFHPA)	NA	NA	NA	NA	NA	NA	NA	NA	NA	NA	NA	NA	NA	NA	NA
Perfluorohexane Sulfonate (PFHXS)	NA	NA	NA	NA	NA	NA	NA	NA	NA	NA	NA	NA	NA	NA	NA
Perfluorononanoic acid (PFNA)	NA	NA	NA	NA	NA	NA	NA	NA	NA	NA	NA	NA	NA	NA	NA
Perfluorodecanoic acid (PFNDCA)	NA	NA	NA	NA	NA	NA	NA	NA	NA	NA	NA	NA	NA	NA	NA
Perfluorooctane Sulfonamide (PFOSA)	NA	NA	NA	NA	NA	NA	NA	NA	NA	NA	NA	NA	NA	NA	NA
Perfluoropentanoic acid (PFPA)	NA	NA	NA	NA	NA	NA	NA	NA	NA	NA	NA	NA	NA	NA	NA
Perfluorotetradecanoic acid (PFTEDA)	NA	NA	NA	NA	NA	NA	NA	NA	NA	NA	NA	NA	NA	NA	NA
Perfluorotridecanoic acid (PFTRIDA)	NA	NA	NA	NA	NA	NA	NA	NA	NA	NA	NA	NA	NA	NA	NA
Perfluoroundecanoic acid (PFUNDCA)	NA	NA	NA	NA	NA	NA	NA	NA	NA	NA	NA	NA	NA	NA	NA

Table 2-1 - Historical Groundwater PFOS, PFOA, and PFBS Analytical Results  
 USAEC PFAS Preliminary Assessment/Site Inspection  
 Fort Wainwright, Alaska

Sample ID	Bldg 3559A	Bldg 3559A	Bldg 3559A	Bldg 3559A	Bldg 3559A	Bldg 3559A	Bldg 3559A	3559 Well B	Bldg 3559B	Bldg 3559B	Bldg 3559B	Bldg 3559 Entry Point	Bldg 3559 Entry Point	Bldg 3559B
Location	Bldg 3559A	Bldg 3559A	Bldg 3559A	Bldg 3559A	Bldg 3559A	Bldg 3559A	Bldg 3559A	Bldg 3559B	Bldg 3559B	Bldg 3559B	Bldg 3559B	Bldg 3559	Bldg 3559	Bldg 3559B
Laboratory	Pollen	Pollen	Pollen	Pollen	Pollen	Pollen	Pollen	Pollen	Pollen	Pollen	Pollen	Pollen	Pollen	Pollen
Sample Date	4/10/2019	7/17/2019	10/2/2019	1/4/2020	4/13/2020	7/12/2020	10/16/2017	9/18/2018	11/7/2018	1/29/2019	1/29/2019	4/10/2019	7/17/2019	
Sample Type	N	N	N	N	N	N	N	N	N	N	N	N	N	N
Analyte (µg/L)	OSD Risk Screening Level (µg/L)													
Perfluorooctane Sulfonate (PFOS)	0.040	<b>0.0024</b>	<b>0.0021</b>	<b>0.0024</b>	< 0.002	<b>0.0027</b>	<b>0.0026</b>	< 0.002	< 0.002	< 0.002	<b>0.0023</b>	<b>0.0025</b>	< 0.002	< 0.002
Perfluorooctanoic acid (PFOA)	0.040	< 0.002	< 0.002	< 0.002	< 0.002	< 0.002	< 0.002	< 0.002	< 0.002	< 0.002	< 0.002	< 0.002	< 0.002	< 0.002
Perfluorobutane Sulfonate (PFBS)	0.600	NA	NA	NA	NA	NA	NA	NA	NA	NA	NA	NA	NA	NA
Perfluorobutyric acid (PFBTA)	NA	NA	NA	NA	NA	NA	NA	NA	NA	NA	NA	NA	NA	NA
Perfluorodecane Sulfonate (PFDCS)	NA	NA	NA	NA	NA	NA	NA	NA	NA	NA	NA	NA	NA	NA
Perfluorododecanoic acid (PFDOA)	NA	NA	NA	NA	NA	NA	NA	NA	NA	NA	NA	NA	NA	NA
Perfluorohexanoic acid (PFHA)	NA	NA	NA	NA	NA	NA	NA	NA	NA	NA	NA	NA	NA	NA
Perfluoroheptanoic acid (PFHPA)	NA	NA	NA	NA	NA	NA	NA	NA	NA	NA	NA	NA	NA	NA
Perfluorohexane Sulfonate (PFHXS)	NA	NA	NA	NA	NA	NA	NA	NA	NA	NA	NA	NA	NA	NA
Perfluorononanoic acid (PFNA)	NA	NA	NA	NA	NA	NA	NA	NA	NA	NA	NA	NA	NA	NA
Perfluorodecanoic acid (PFNDCA)	NA	NA	NA	NA	NA	NA	NA	NA	NA	NA	NA	NA	NA	NA
Perfluorooctane Sulfonamide (PFOSA)	NA	NA	NA	NA	NA	NA	NA	NA	NA	NA	NA	NA	NA	NA
Perfluoropentanoic acid (PFPA)	NA	NA	NA	NA	NA	NA	NA	NA	NA	NA	NA	NA	NA	NA
Perfluorotetradecanoic acid (PFTEDA)	NA	NA	NA	NA	NA	NA	NA	NA	NA	NA	NA	NA	NA	NA
Perfluorotridecanoic acid (PFTRIDA)	NA	NA	NA	NA	NA	NA	NA	NA	NA	NA	NA	NA	NA	NA
Perfluoroundecanoic acid (PFUNDCA)	NA	NA	NA	NA	NA	NA	NA	NA	NA	NA	NA	NA	NA	NA

Table 2-1 - Historical Groundwater PFOS, PFOA, and PFBS Analytical Results  
 USAEC PFAS Preliminary Assessment/Site Inspection  
 Fort Wainwright, Alaska



Sample ID	Bldg 3559B	Bldg 3559B	Bldg 3559B	Bldg 3559B	3563	In House Bldg 3563	Bldg 3563	In House Bldg 3563	Raw Well 3563	In House Bldg 3563	Bldg 3563	Well House Bldg 3563	Well House Bldg 3563	
Location	Bldg 3559B	Bldg 3559B	Bldg 3559B	Bldg 3559B	Bldg 3563	Bldg 3563	Bldg 3563	Bldg 3563	Bldg 3563	Bldg 3563	Bldg 3563	Bldg 3563	Bldg 3563	
Laboratory	Pollen	Pollen	Pollen	Pollen	Pollen	Pollen	Pollen	Pollen	Pollen	Pollen	Pollen	Pollen	Pollen	
Sample Date	10/2/2019	1/4/2020	4/13/2020	7/12/2020	10/16/2017	8/15/2018	11/7/2018	1/30/2019	4/10/2019	7/17/2019	10/2/2019	3/18/2020	4/15/2020	
Sample Type	N	N	N	N	N	N	N	N	N	N	N	N	N	
Analyte (µg/L)	OSD Risk Screening Level (µg/L)													
Perfluorooctane Sulfonate (PFOS)	0.040	<b>0.0022</b>	< 0.002	<b>0.0023</b>	<b>0.0021</b>	< 0.002	< 0.002	< 0.002	< 0.002	< 0.002	< 0.002	< 0.002	< 0.002	< 0.002
Perfluorooctanoic acid (PFOA)	0.040	< 0.002	< 0.002	< 0.002	< 0.002	< 0.002	< 0.002	< 0.002	< 0.002	< 0.002	< 0.002	< 0.002	< 0.002	< 0.002
Perfluorobutane Sulfonate (PFBS)	0.600	NA	NA	NA	NA	NA	NA	NA	NA	NA	NA	NA	NA	NA
Perfluorobutyric acid (PFBTA)	NA	NA	NA	NA	NA	NA	NA	NA	NA	NA	NA	NA	NA	NA
Perfluorodecane Sulfonate (PFDCS)	NA	NA	NA	NA	NA	NA	NA	NA	NA	NA	NA	NA	NA	NA
Perfluorododecanoic acid (PFDOA)	NA	NA	NA	NA	NA	NA	NA	NA	NA	NA	NA	NA	NA	NA
Perfluorohexanoic acid (PFHA)	NA	NA	NA	NA	NA	NA	NA	NA	NA	NA	NA	NA	NA	NA
Perfluoroheptanoic acid (PFHPA)	NA	NA	NA	NA	NA	NA	NA	NA	NA	NA	NA	NA	NA	NA
Perfluorohexane Sulfonate (PFHXS)	NA	NA	NA	NA	NA	NA	NA	NA	NA	NA	NA	NA	NA	NA
Perfluorononanoic acid (PFNA)	NA	NA	NA	NA	NA	NA	NA	NA	NA	NA	NA	NA	NA	NA
Perfluorodecanoic acid (PFNDCA)	NA	NA	NA	NA	NA	NA	NA	NA	NA	NA	NA	NA	NA	NA
Perfluorooctane Sulfonamide (PFOSA)	NA	NA	NA	NA	NA	NA	NA	NA	NA	NA	NA	NA	NA	NA
Perfluoropentanoic acid (PFPA)	NA	NA	NA	NA	NA	NA	NA	NA	NA	NA	NA	NA	NA	NA
Perfluorotetradecanoic acid (PFTEDA)	NA	NA	NA	NA	NA	NA	NA	NA	NA	NA	NA	NA	NA	NA
Perfluorotridecanoic acid (PFTRIDA)	NA	NA	NA	NA	NA	NA	NA	NA	NA	NA	NA	NA	NA	NA
Perfluoroundecanoic acid (PFUNDCA)	NA	NA	NA	NA	NA	NA	NA	NA	NA	NA	NA	NA	NA	NA

Table 2-1 - Historical Groundwater PFOS, PFOA, and PFBS Analytical Results  
 USAEC PFAS Preliminary Assessment/Site Inspection  
 Fort Wainwright, Alaska



Sample ID	Well House Bldg 3563	Bldg 3565	Bldg 3565	3565	Bldg 3565 Entry Point	Bldg 3565 Entry Point	Bldg 3565 Entry Point	Bldg 3565 Entry Point	Bldg 3565 Entry Point	Bldg 3565 Entry Point	Bldg 3565 Entry Point	Well House Bldg 3565	4023	
Location	Bldg 3563	Treatment Plant DSEP	Treatment Plant DSEP	Bldg 3565	Bldg 3565	Bldg 3565	Bldg 3565	Bldg 3565	Bldg 3565	Bldg 3565	Bldg 3565	Bldg 3565	Bldg 4023	
Laboratory	Pollen	Pollen	Pollen	Pollen	Pollen	Pollen	Pollen	Pollen	Pollen	Pollen	Pollen	Pollen	Pollen	
Sample Date	7/12/2020	12/17/2013	6/5/2014	10/16/2017	9/18/2018	4/10/2019	7/17/2019	10/2/2019	1/4/2020	4/13/2020	7/12/2020	8/11/2020	10/16/2017	
Sample Type	N	N	N	N	N	N	N	N	N	N	N	N	N	
Analyte (µg/L)	OSD Risk Screening Level (µg/L)													
Perfluorooctane Sulfonate (PFOS)	0.040	< 0.002	< 0.04	< 0.04	< 0.002	<b>0.0024</b>	<b>0.0025</b>	<b>0.0022</b>	<b>0.0022</b>	<b>0.0024</b>	<b>0.0024</b>	<b>0.0029</b>	< 0.002	< 0.002
Perfluorooctanoic acid (PFOA)	0.040	< 0.002	< 0.02	< 0.02	< 0.002	< 0.002	< 0.002	< 0.002	< 0.002	< 0.002	< 0.002	< 0.002	< 0.002	< 0.002
Perfluorobutane Sulfonate (PFBS)	0.600	NA	< 0.09	< 0.09	NA	NA	NA	NA	NA	NA	NA	NA	NA	NA
Perfluorobutyric acid (PFBTA)	NA	NA	NA	NA	NA	NA	NA	NA	NA	NA	NA	NA	NA	NA
Perfluorodecane Sulfonate (PFDCS)	NA	NA	NA	NA	NA	NA	NA	NA	NA	NA	NA	NA	NA	NA
Perfluorododecanoic acid (PFDOA)	NA	NA	NA	NA	NA	NA	NA	NA	NA	NA	NA	NA	NA	NA
Perfluorohexanoic acid (PFHA)	NA	NA	NA	NA	NA	NA	NA	NA	NA	NA	NA	NA	NA	NA
Perfluoroheptanoic acid (PFHPA)	NA	NA	< 0.01	< 0.01	NA	NA	NA	NA	NA	NA	NA	NA	NA	NA
Perfluorohexane Sulfonate (PFHXS)	NA	NA	< 0.03	< 0.03	NA	NA	NA	NA	NA	NA	NA	NA	NA	NA
Perfluorononanoic acid (PFNA)	NA	NA	< 0.02	< 0.02	NA	NA	NA	NA	NA	NA	NA	NA	NA	NA
Perfluorodecanoic acid (PFNDCA)	NA	NA	NA	NA	NA	NA	NA	NA	NA	NA	NA	NA	NA	NA
Perfluorooctane Sulfonamide (PFOSA)	NA	NA	NA	NA	NA	NA	NA	NA	NA	NA	NA	NA	NA	NA
Perfluoropentanoic acid (PFPA)	NA	NA	NA	NA	NA	NA	NA	NA	NA	NA	NA	NA	NA	NA
Perfluorotetradecanoic acid (PFTEDA)	NA	NA	NA	NA	NA	NA	NA	NA	NA	NA	NA	NA	NA	NA
Perfluorotridecanoic acid (PFTRIDA)	NA	NA	NA	NA	NA	NA	NA	NA	NA	NA	NA	NA	NA	NA
Perfluoroundecanoic acid (PFUNDCA)	NA	NA	NA	NA	NA	NA	NA	NA	NA	NA	NA	NA	NA	NA

Table 2-1 - Historical Groundwater PFOS, PFOA, and PFBS Analytical Results  
 USAEC PFAS Preliminary Assessment/Site Inspection  
 Fort Wainwright, Alaska



Sample ID	Fire Well 4023	Fire Well 4023	Fire Well 4023	Fire Well 4023	Fire Well 4023	Fire Well 4023	Fire Well 4023	Fire Well 4023	Fire Well 4023	Fire Well 4023	CHPP Well 5 3600	CHPP Well 5 3600	CHPP Well 5	
Location	Bldg 4023	Bldg 4023	Bldg 4023	Bldg 4023	Bldg 4023	Bldg 4023	Bldg 4023	Bldg 4023	Bldg 4023	Bldg 4023	Bldg 3600	Bldg 3600	Bldg 3600	
Laboratory	Pollen	Pollen	Pollen	Pollen	Pollen	Pollen	Pollen	Pollen	Pollen	Pollen	Pollen	Pollen	Pollen	
Sample Date	6/20/2018	8/22/2018	11/7/2018	2/6/2019	4/10/2019	7/17/2019	10/2/2019	3/18/2020	4/15/2020	7/12/2020	6/20/2018	8/22/2018	11/7/2018	
Sample Type	N	N	N	N	N	N	N	N	N	N	N	N	N	
Analyte (µg/L)	OSD Risk Screening Level (µg/L)													
Perfluorooctane Sulfonate (PFOS)	0.040	< 0.002	< 0.002	< 0.002	< 0.002	< 0.002	< 0.002	< 0.002	< 0.002	< 0.002	< 0.002	< 0.002	< 0.002	< 0.002
Perfluorooctanoic acid (PFOA)	0.040	< 0.002	< 0.002	< 0.002	< 0.002	< 0.002	< 0.002	< 0.002	< 0.002	< 0.002	< 0.002	<b>0.0066</b>	<b>0.008</b>	<b>0.014</b>
Perfluorobutane Sulfonate (PFBS)	0.600	NA	NA	NA	NA	NA	NA	NA	NA	NA	NA	NA	NA	NA
Perfluorobutyric acid (PFBTA)	NA	NA	NA	NA	NA	NA	NA	NA	NA	NA	NA	NA	NA	NA
Perfluorodecane Sulfonate (PFDCS)	NA	NA	NA	NA	NA	NA	NA	NA	NA	NA	NA	NA	NA	NA
Perfluorododecanoic acid (PFDOA)	NA	NA	NA	NA	NA	NA	NA	NA	NA	NA	NA	NA	NA	NA
Perfluorohexanoic acid (PFHA)	NA	NA	NA	NA	NA	NA	NA	NA	NA	NA	NA	NA	NA	NA
Perfluoroheptanoic acid (PFHPA)	NA	NA	NA	NA	NA	NA	NA	NA	NA	NA	NA	NA	NA	NA
Perfluorohexane Sulfonate (PFHXS)	NA	NA	NA	NA	NA	NA	NA	NA	NA	NA	NA	NA	NA	NA
Perfluorononanoic acid (PFNA)	NA	NA	NA	NA	NA	NA	NA	NA	NA	NA	NA	NA	NA	NA
Perfluorodecanoic acid (PFNDCA)	NA	NA	NA	NA	NA	NA	NA	NA	NA	NA	NA	NA	NA	NA
Perfluorooctane Sulfonamide (PFOSA)	NA	NA	NA	NA	NA	NA	NA	NA	NA	NA	NA	NA	NA	NA
Perfluoropentanoic acid (PFPA)	NA	NA	NA	NA	NA	NA	NA	NA	NA	NA	NA	NA	NA	NA
Perfluorotetradecanoic acid (PFTEDA)	NA	NA	NA	NA	NA	NA	NA	NA	NA	NA	NA	NA	NA	NA
Perfluorotridecanoic acid (PFTRIDA)	NA	NA	NA	NA	NA	NA	NA	NA	NA	NA	NA	NA	NA	NA
Perfluoroundecanoic acid (PFUNDCA)	NA	NA	NA	NA	NA	NA	NA	NA	NA	NA	NA	NA	NA	NA

Table 2-1 - Historical Groundwater PFOS, PFOA, and PFBS Analytical Results  
 USAEC PFAS Preliminary Assessment/Site Inspection  
 Fort Wainwright, Alaska



Sample ID	CHPP Well 4 3594	CHPP Well 4	FWA-19-095- GW001	FWA-19-095- GW002	13FWFP01 WG	13FWFP02 WG	13FWFP03 WG	13FWFP04 WG	13FWFP05 WG	13FWFP06 WG	13FWFP07 WG	13FWFP08 WG	13FWFP09 WG	
Location	Bldg 3594	Bldg 3594	Unnamed Well	Unnamed Well	AP- 10261MW	AP- 10265MW	AP- 10266MW	AP- 10267MW	AP- 10267MW	AP- 10283MW	AP- 10285MW	AP-6149	AP-6148	
Laboratory	Pollen	Pollen	SGS North America, Inc.	SGS North America, Inc.	TADC	TADC	TADC	TADC	TADC	TADC	TADC	TADC	TADC	
Sample Date	8/22/2018	11/7/2018	4/5/2019	4/5/2019	11/06/2013	11/06/2013	11/06/2013	11/06/2013	11/06/2013	11/06/2013	11/07/2013	11/07/2013	11/07/2013	
Sample Type	N	N	N	FD	N	N	N	N	N	FD	N	N	N	
Analyte (µg/L)	OSD Risk Screening Level (µg/L)													
Perfluorooctane Sulfonate (PFOS)	0.040	< 0.002	< 0.002	<b>0.00796</b>	<b>0.00853</b>	< 0.021	< 0.020	<b>3.3</b>	<b>0.22</b>	<b>0.25</b>	<b>0.28</b>	<b>0.020 J</b>	<b>0.11</b>	<b>0.20</b>
Perfluorooctanoic acid (PFOA)	0.040	< 0.002	< 0.002	<b>0.00538</b>	<b>0.00543</b>	< 0.011	< 0.010	<b>0.34</b>	<b>0.070</b>	<b>0.077</b>	<b>0.029</b>	<b>0.011 J</b>	<b>0.012 J</b>	< 0.0099
Perfluorobutane Sulfonate (PFBS)	0.600	NA	NA	<b>0.00162</b>	<b>0.00160</b>	< 0.0095	< 0.0092	<b>0.27</b>	<b>0.14</b>	<b>0.14</b>	<b>1.9</b>	<b>0.013 J</b>	< 0.0088	< 0.0089
Perfluorobutyric acid (PFBTA)	NA	NA	NA	<b>0.00331</b>	<b>0.00328</b>	<b>0.017 J</b>	<b>0.028</b>	<b>0.42</b>	<b>0.052</b>	<b>0.055</b>	<b>0.61</b>	<b>0.038</b>	< 0.0098	<b>0.016 J</b>
Perfluorodecane Sulfonate (PFDCS)	NA	NA	NA	< 0.0020	< 0.0020	< 0.011	< 0.010	< 0.010	< 0.0098	< 0.011	< 0.010	< 0.011	< 0.0098	< 0.0099
Perfluorododecanoic acid (PFDOA)	NA	NA	NA	< 0.0020	< 0.0020	< 0.021	< 0.020	< 0.021	< 0.020	< 0.021	< 0.020	< 0.022	< 0.020	< 0.020
Perfluorohexanoic acid (PFHA)	NA	NA	NA	<b>0.00426</b>	<b>0.00407</b>	<b>0.0044 J</b>	<b>0.031</b>	<b>0.73</b>	<b>0.23</b>	<b>0.24</b>	<b>3.1</b>	<b>0.068</b>	<b>0.013 J</b>	<b>0.015 J</b>
Perfluoroheptanoic acid (PFHPA)	NA	NA	NA	<b>0.00258</b>	<b>0.00268</b>	< 0.021	< 0.020	<b>0.33</b>	<b>0.052</b>	<b>0.069</b>	<b>0.13</b>	<b>0.017 J</b>	< 0.020	< 0.020
Perfluorohexane Sulfonate (PFHXS)	NA	NA	NA	<b>0.0121</b>	<b>0.0117</b>	<b>0.026 J</b>	<b>0.017 J</b>	<b>1.2</b>	<b>0.34</b>	<b>0.36</b>	<b>0.71</b>	<b>0.038</b>	<b>0.11</b>	<b>0.082</b>
Perfluorononanoic acid (PFNA)	NA	NA	NA	< 0.0020	< 0.0020	< 0.021	< 0.020	<b>0.034 J</b>	< 0.020	< 0.021	< 0.020	< 0.022	< 0.020	< 0.020
Perfluorodecanoic acid (PFNDCA)	NA	NA	NA	< 0.0020	< 0.0020	< 0.011	< 0.010	< 0.010	< 0.0098	< 0.011	< 0.010	< 0.011	< 0.0098	< 0.0099
Perfluorooctane Sulfonamide (PFOSA)	NA	NA	NA	< 0.0020	< 0.0020	< 0.016	< 0.016	< 0.016	< 0.015	< 0.015	< 0.016	< 0.015	< 0.016	< 0.015
Perfluoropentanoic acid (PFPA)	NA	NA	NA	<b>0.00336</b>	<b>0.00334</b>	<b>0.015 J</b>	<b>0.069</b>	<b>0.80</b>	<b>0.20</b>	<b>0.21</b>	<b>2.3</b>	<b>0.12</b>	< 0.0098	< 0.0099
Perfluorotetradecanoic acid (PFTEDA)	NA	NA	NA	< 0.0020	< 0.0020	< 0.021	< 0.020	< 0.021	< 0.020	< 0.021	< 0.020	< 0.022	< 0.020	< 0.020
Perfluorotridecanoic acid (PFTRIDA)	NA	NA	NA	< 0.0020	< 0.0020	< 0.021	< 0.020	< 0.021	< 0.020	< 0.021	< 0.020	< 0.022	< 0.020	< 0.020
Perfluoroundecanoic acid (PFUNDCA)	NA	NA	NA	< 0.0020	< 0.0020	< 0.011	< 0.010	< 0.010	< 0.0098	< 0.011	< 0.010	< 0.011	< 0.0098	< 0.0099

Table 2-1 - Historical Groundwater PFOS, PFOA, and PFBS Analytical Results  
 USAEC PFAS Preliminary Assessment/Site Inspection  
 Fort Wainwright, Alaska



Sample ID	13FWFP10 WG	13FWFP11 WG	13FWFP12 WG	13FWFP13 WG	13FWFP14 WG	13FWFP15 WG	
Location	AP-10281MW	AP-10274MW	AP-10274MW	AP-10278MW	AP-10280MW	AP-10276MW	
Laboratory	TADC	TADC	TADC	TADC	TADC	TADC	
Sample Date	11/11/2013	11/11/2013	11/11/2013	11/11/2013	11/11/2013	11/11/2013	
Sample Type	N	N	FD	N, MS/MSD	N	N	
Analyte (µg/L)	OSD Risk Screening Level (µg/L)						
Perfluorooctane Sulfonate (PFOS)	0.040	< 0.020	< 0.020	< 0.020	<b>0.72 ML</b>	<b>0.015 J</b>	<b>0.17</b>
Perfluorooctanoic acid (PFOA)	0.040	< 0.010	< 0.010	< 0.0098	<b>0.058</b>	< 0.0099	<b>0.44</b>
Perfluorobutane Sulfonate (PFBS)	0.600	< 0.0091	< 0.0092	< 0.0088	<b>0.012 J</b>	< 0.0089	<b>0.024</b>
Perfluorobutyric acid (PFBTA)	NA	< 0.010	< 0.010	< 0.0098	< 0.011	< 0.0099	< 0.011
Perfluorodecane Sulfonate (PFDCS)	NA	< 0.010	< 0.010	< 0.0098	< 0.011	< 0.0099	< 0.011
Perfluorododecanoic acid (PFDOA)	NA	< 0.020	< 0.020	< 0.020	< 0.021	< 0.020	< 0.021
Perfluorohexanoic acid (PFHA)	NA	< 0.010	<b>0.011 JB</b>	< 0.0098	<b>0.059</b>	< 0.0099	<b>0.14</b>
Perfluoroheptanoic acid (PFHPA)	NA	< 0.020	< 0.020	< 0.020	< 0.021	< 0.020	<b>0.031 J</b>
Perfluorohexane Sulfonate (PFHXS)	NA	<b>0.017 JB</b>	<b>0.022 JB</b>	<b>0.023 JB</b>	<b>0.63 ML</b>	<b>0.014 JB</b>	<b>0.55</b>
Perfluorononanoic acid (PFNA)	NA	< 0.020	< 0.020	< 0.020	< 0.021	<b>0.022 J</b>	< 0.021
Perfluorodecanoic acid (PFNDCA)	NA	< 0.010	< 0.010 ML	< 0.0098	< 0.011	< 0.0099	< 0.011
Perfluorooctane Sulfonamide (PFOSA)	NA	< 0.016	< 0.015	< 0.015	< 0.015	< 0.016	< 0.015
Perfluoropentanoic acid (PFPA)	NA	< 0.010	< 0.010	< 0.0098	<b>0.013 J</b>	< 0.0099	<b>0.019 J</b>
Perfluorotetradecanoic acid (PFTEDA)	NA	< 0.020	< 0.020	< 0.020	< 0.021	< 0.020	< 0.021
Perfluorotridecanoic acid (PFTRIDA)	NA	< 0.020	< 0.020	< 0.020	< 0.021	< 0.020	< 0.021
Perfluoroundecanoic acid (PFUNDCA)	NA	< 0.010	< 0.010	< 0.0098	< 0.011 ML	< 0.0099	< 0.011



**Notes:**

1. Historical data are as provided by the laboratory in source reports:  
Fairbanks Environmental Services, Inc. 2014. Former Fire Training Pits Investigation, Fort Wainwright Alaska. April.  
Various stand-alone laboratory reports provided by Doyon Utilities and the United States Army Corps of Engineers.
2. **Bolded** data indicate detections.
3. Grey shaded data indicate concentrations greater than the residential tap water risk screening levels provided by the Office of the Secretary of Defense (OSD; Office of the Secretary of Defense. 2021. Memorandum: Investigating Per- and Polyfluoroalkyl Substances within the Department of Defense Cleanup Program. September 15.).
4. Pollen Environmental, LLC. subcontracts analyses to Eurofins Eaton Analytical.
5. The FWA-19-095-GW001 sample was analyzed for eight additional PFAS compounds; of these eight, detected compounds include perfluoropentane sulfonic acid (0.00149 µg/L) and 6:2 fluorotelemer sulfonate (0.00321 µg/L).

**Acronym/Abbreviations:**

- < - analyte not detected at a concentration greater than the limit of detection; concentration is provided as less than the limit of detection
- µg/L - micrograms per liter (parts per billion)
- Bldg. - building
- CHPP - Central Heat and Power Plant
- FD - field duplicate
- ID - identification
- N - normal
- NA - not applicable
- PFAS - per- and polyfluoroalkyl substances
- TADC - Test America (Denver, Colorado)
- MS - matrix spike
- MSD - matrix spike duplicate

**Qualifiers:**

- B - result may be due to cross-contamination
- J - result qualified as estimate because it is less than the limit of quantitation
- M - result considered an estimate (L - low; H - high) due to matrix interference

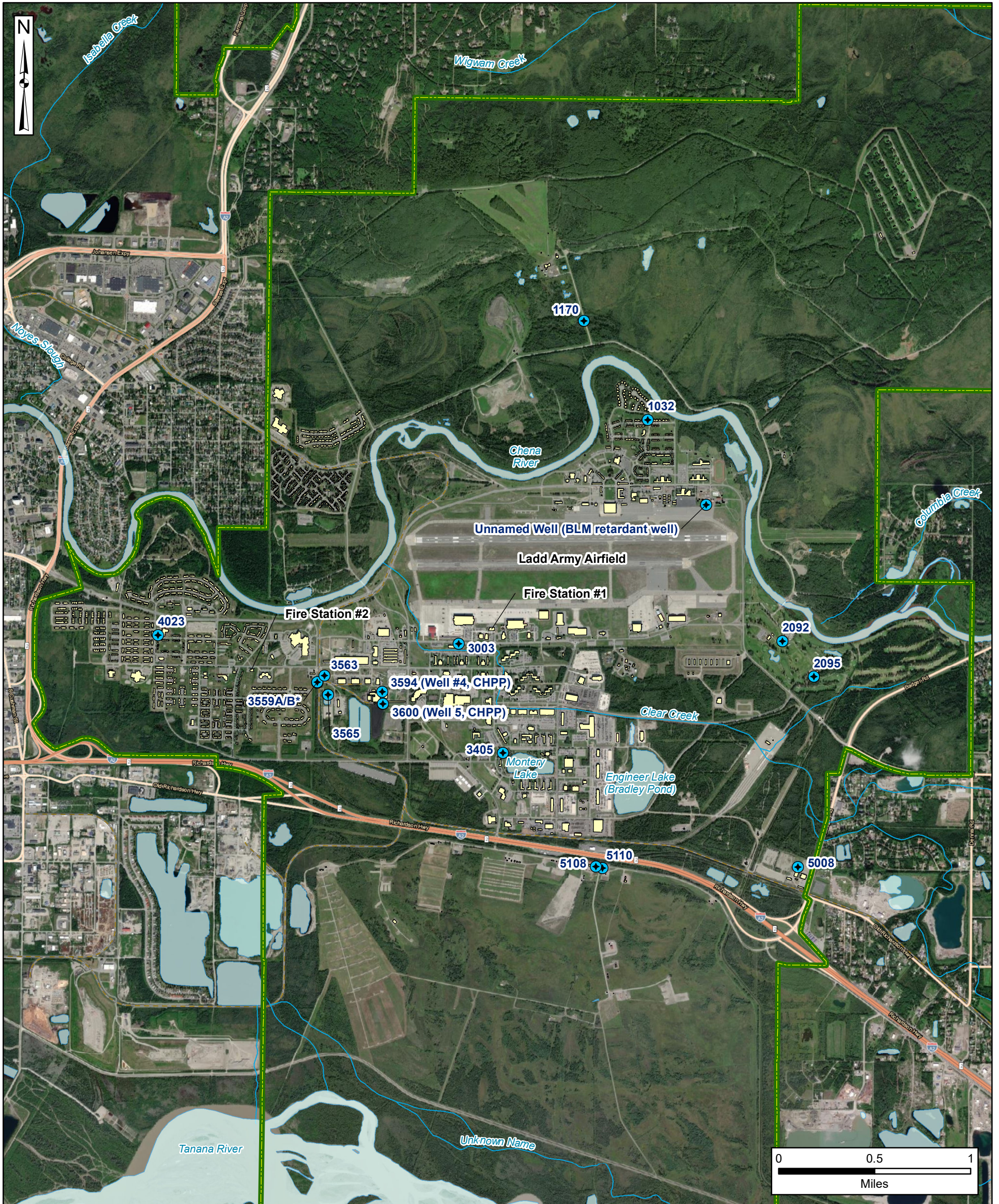
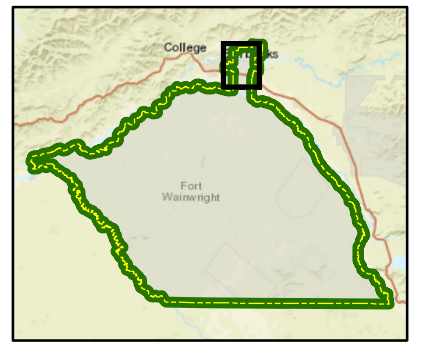




USAEC PFAS Preliminary Assessment / Site Inspection  
Fort Wainwright, AK



Figure 2-2  
Site Layout



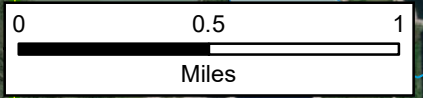
- Installation Boundary
- Building
- River/Stream
- Water Body

- Installation Water Supply Well
- BLM = Bureau of Land Management  
CHPP=Central Heat and Power Plant

Note:  
1. \*Only potable water wells 3559A/B are used for drinking water supply. Wells 3565 and 3563 are backup potable water supply wells, and the remainder are used for back-up fire support or are stand alone potable wells.  
2. Installation water supply wells are identified by the building number in which they are housed, except well 5008 which is housed in Building 5009.

Data Sources:  
Fort Wainwright, GIS Data, 2018  
ESRI ArcGIS Online, Aerial Imagery

Coordinate System:  
WGS 1984, UTM Zone 6 North



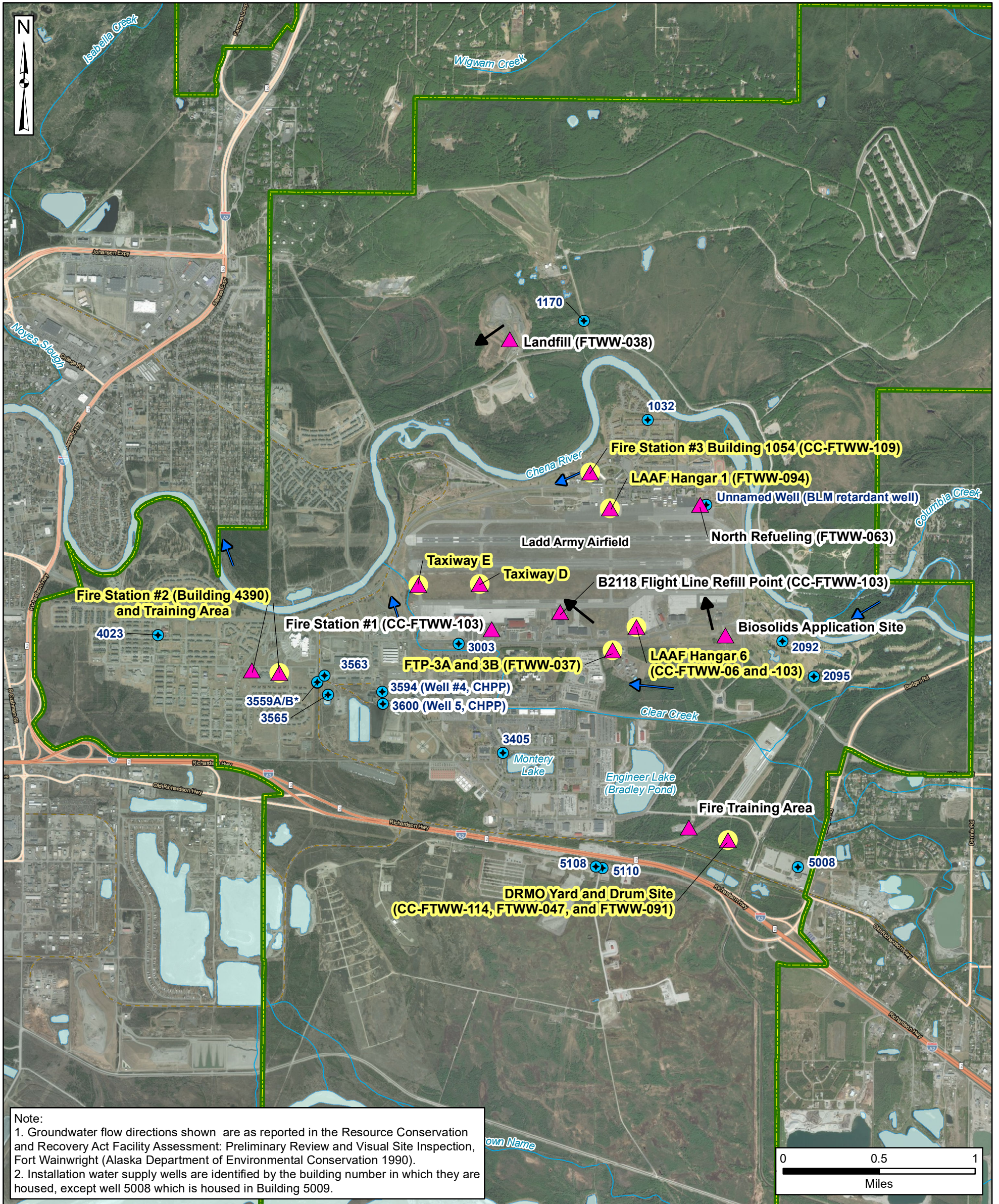
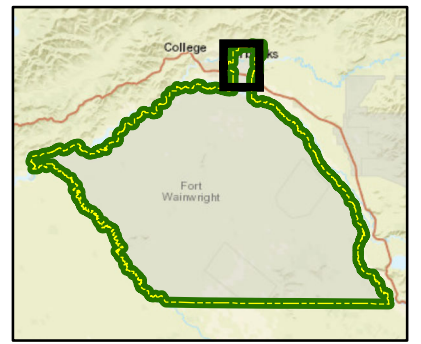




USAEC PFAS Preliminary Assessment / Site Inspection  
Fort Wainwright, AK



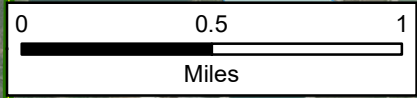
Figure 7-1  
AOPI Locations and OSD Risk Screening Level Exceedances Summary



Note:  
1. Groundwater flow directions shown are as reported in the Resource Conservation and Recovery Act Facility Assessment: Preliminary Review and Visual Site Inspection, Fort Wainwright (Alaska Department of Environmental Conservation 1990).  
2. Installation water supply wells are identified by the building number in which they are housed, except well 5008 which is housed in Building 5009.

- Installation Boundary
- AOPI Location
- AOPI with OSD Risk Screening Level Exceedance
- Installation Water Supply Well
- River/Stream
- Water Body
- Groundwater Flow Direction
- Surface Water Flow Direction

- AOPI = area of potential interest
- BLM = Bureau of Land Management
- CHPP = Central Heat and Power Plant
- DRMO = Defense Reutilization and Marketing Office
- FTP = fire training pit
- FTWW = Fort Wainwright
- LAAF = Ladd Army Airfield
- OSD = Office of the Secretary of Defense



\*Only potable water wells DW-3559A/B are used for drinking water supply. Wells DW-3565 and DW-3563 are backup potable water supply wells, and the remainder are used for back-up fire support or are stand alone potable wells.