

Building Your Lead Service Line Inventory

Overview- Small PWS/NTNC



1

Locate Your Service Lines

Service line pipes are most commonly exposed where the pipe enters the building through the wall or floor. An isolation valve is generally installed at the point of entry.

2

Identify Service Line Material

Use a screwdriver, key, or coin to scratch the service line close to the floor. If the scraped area is shiny silver and a magnet does not stick to the pipe, it is a lead. If the scraped area is copper like a penny, it is a copper pipe. If the scraped area is a dull gray, and a magnet sticks to the pipe, it is galvanized steel/iron.

3

Take a Photo

It is recommended, but not required, to take a photo of your service line, where it enters your building for your records. If possible, take a photo of the results of your scratch and magnet tests.

4

Inspect Your Interior Plumbing

Interior plumbing (premise plumbing) refers to the pipes and fixtures on the interior of your home or building. This means the pipes supplying water to the sinks, showers, water heaters, pressure tanks, refrigerators, or other fixtures in your building.

5

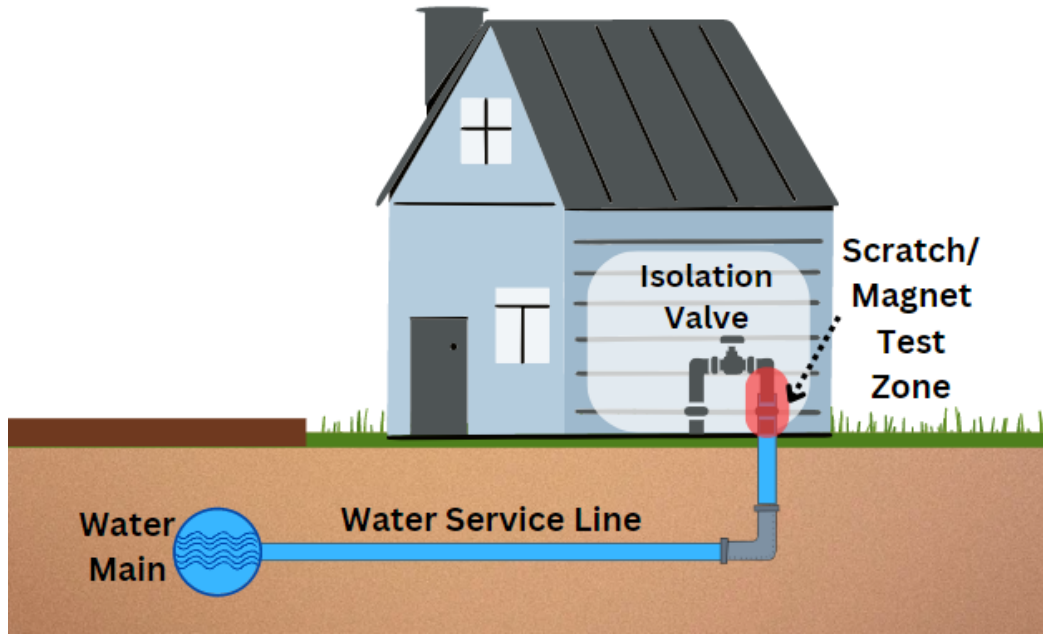
Submit Your Findings

Once you have identified your service line material and premise plumbing material, you must submit your findings.

1

Locate Your Service Lines

Service lines are most commonly exposed where the pipe enters the building through the wall or floor. An isolation valve is generally installed at the point of entry. If you have a crawlspace or basement, the service line will likely come into your building on that level. Your building may have an arctic box located outside your building, where the service line and isolation valve are located.



2

Identify Service Line Material

Lead



A dull, silver colored pipe that can be easily scratched with a coin or key. Scratching leaves a shiny silver color. Magnets WILL NOT stick to lead pipes. Lead pipes are bendable and commonly have a "bulb".

Copper



Brown colored pipe that can be easily scratched with a coin or key. Scratching leaves a copper color. Magnets WILL NOT stick to copper pipes.

Galvanized Iron/Steel



A dull, silver colored pipe that is hard to scratch with a coin or key. Scratching leaves a dull gray color. A magnet WILL stick to a galvanized iron pipe.

Plastic

Generally, black, white, or blue piping. Plastic piping is rigid. A magnet WILL NOT stick to plastic pipe. The color of plastic does NOT indicate the type of plastic. To identify the type of plastic your service line is made of, look for the printed markings on the side of the pipe.



3

Take a Photo

We highly recommend taking a few photos of your service line, where it enters your building or arctic box to submit along with your inventory.

The photos should:

- Be well lit.
- Show the area where you did the scratch and/or magnet test.
- Show your shut off valve and water meter, if you have one.

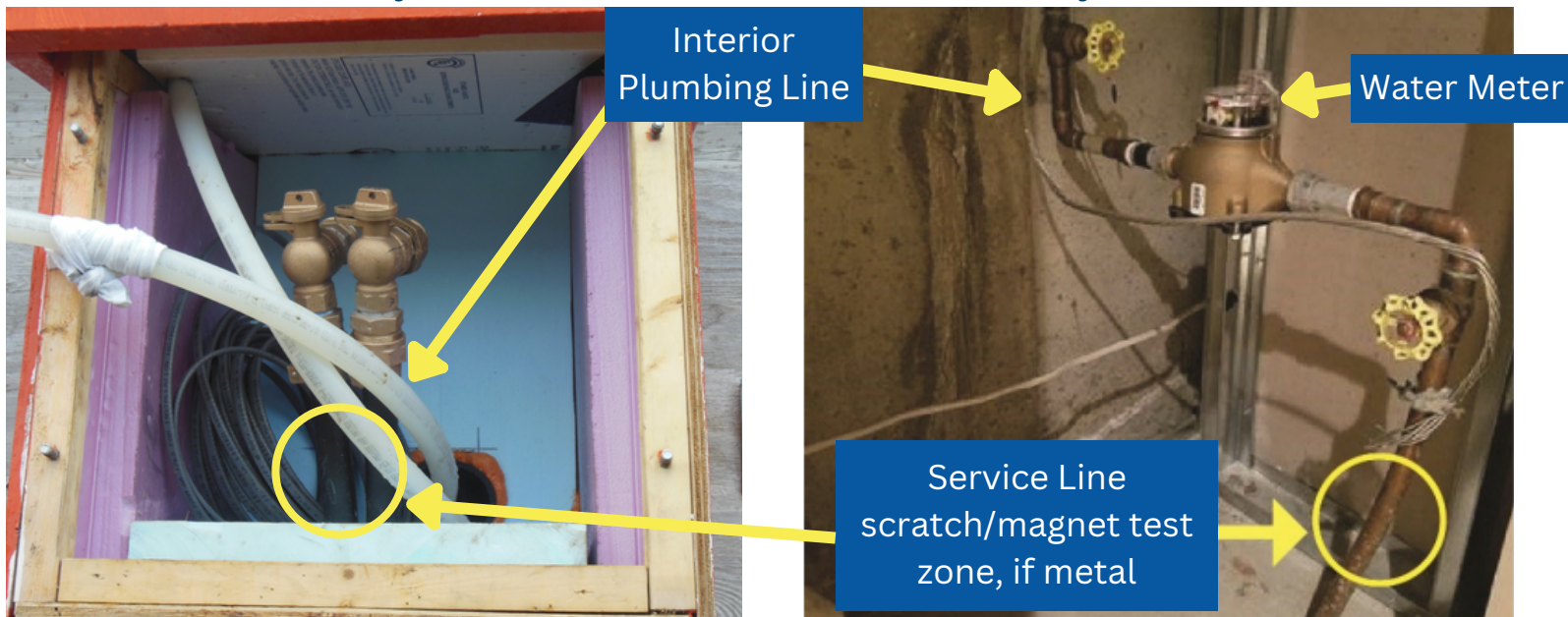


Photo of Service Line within an Arctic Box

Photo of Service Line within a Basement

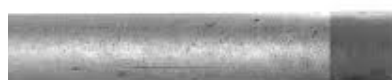
4

Inspect Your Interior Plumbing

Interior plumbing (AKA premise plumbing) refers to the pipes and fixtures on the interior of your home or building. This means the pipes supplying water to the sinks, showers, water heaters, pressure tanks, refrigerators, or other fixtures in your building. Interior plumbing is largely found in the walls of your building. To identify the material, you must find exposed sections of pipe. You can commonly find exposed sections of pipe by your pressure tank, water heater, or under your sink.



Copper



Steel/Iron



Plastic-PVC



Plastic-HDPE



Plastic-PEX

The color of plastic pipe is NOT an indicator of the type of plastic it is made of. The best way to identify plastic pipe is by the printed markings on the side of the pipe.



Submit Your Findings

Once you have identified your service line material and premise plumbing material, you must submit your findings to the State using one (1) of the following options:

Lead-Safe Alaska Portal

The State of Alaska has a data portal to aid in the submission of Lead Service Line Inventory information. Through the portal, you will be able to use a mapping tool to efficiently document your progress towards completing your inventory. The mapping tool sends your information to the State automatically as you verify your customer's data.



[Scan the QR code or follow the link to register for access to the Lead-Safe Alaska Portal:](https://survey123.arcgis.com/share/a6584228b5f34e38b02d1a21edc4c15f?open=menu)

<https://survey123.arcgis.com/share/a6584228b5f34e38b02d1a21edc4c15f?open=menu>

Once you register for your public water system, you will receive an email with your generated username. Follow the steps in the email to establish your password. There will be training sessions available soon to teach you to use the data portal.

Inventory Template Email Submission

The State created an Inventory Template in Microsoft Excel. You can download the Inventory Template on the State of Alaska Drinking Water Program Website:

<https://dec.alaska.gov/eh/dw/lcrr/>.

Once you have filled out the template with all required information, you may submit your completed lead service line inventory to the Drinking Water Program via email at:

DEC.DW.LSLI@ALASKA.GOV

For More Information

Alaska Drinking Water Program Guidance:

<https://dec.alaska.gov/eh/dw/lcrr/>

EPA LCRR Guidance: <https://www.epa.gov/ground-water-and-drinking-water/revised-lead-and-copper-rule>

LSLR Collaborative Guidance: <https://www.lslr-collaborative.org>