

Investigating Your Water Service and Plumbing



Overview- Consumer

1

Locate Your Service Line

Service line pipes are most commonly exposed where the pipe enters the building through the wall or floor. An isolation valve is generally installed at the point of entry.

2

Identify Service Line Material

Use a screwdriver, key, or coin to scratch the service line close to the floor. If the scraped area is shiny silver and a magnet does not stick to the pipe, it is a lead. If the scraped area is copper like a penny, it is a copper pipe. If the scraped area is a dull gray, and a magnet sticks to the pipe, it is galvanized steel/iron.

3

Take a Photo

Take a photo of your service line, where it enters your building. If possible, take a photo of the results of your scratch and magnet tests. You will need to submit this to your utility.

4

Inspect Your Interior Plumbing

Interior plumbing (premise plumbing) refers to the pipes and fixtures on the interior of your home or building. This means the pipes supplying water to the sinks, showers, water heaters, pressure tanks, refrigerators, or other fixtures in your building.

5

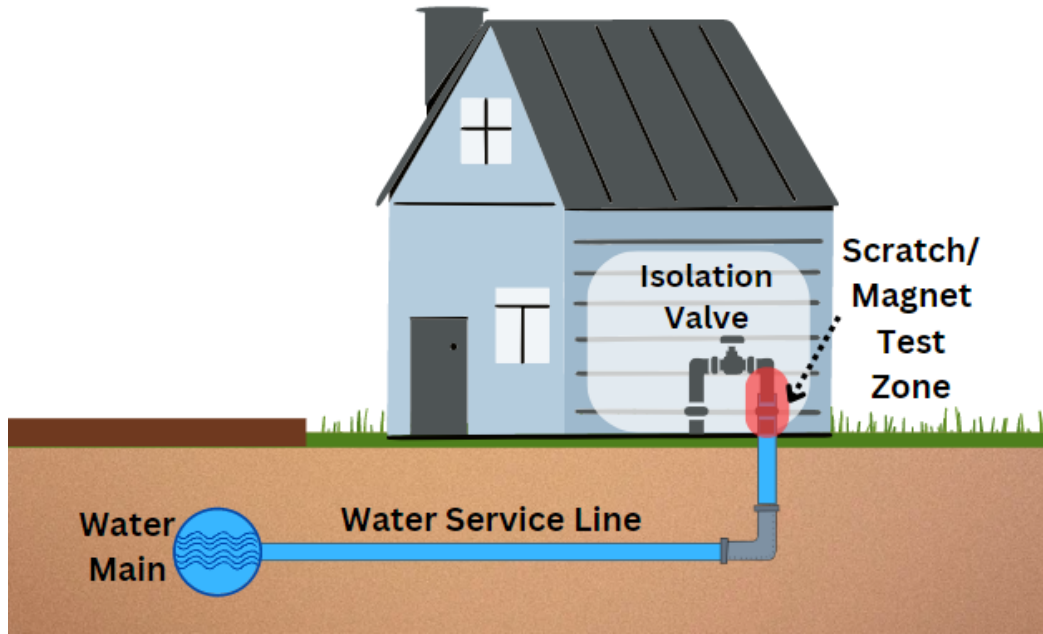
Submit Your Findings

Once you have identified your service line material and premise plumbing material, you must submit your findings to your utility.

1

Locate Your Service Line

Service lines are most commonly exposed where the pipe enters the building through the wall or floor. An isolation valve is generally installed at the point of entry. If you have a crawlspace or basement, the service line will likely come into your building on that level. Your building may have an arctic box located outside your home, where the service line and isolation valve are located.



2

Identify Service Line Material

Lead



A dull, silver colored pipe that can be easily scratched with a coin or key. Scratching leaves a shiny silver color. Magnets WILL NOT stick to lead pipes. Lead pipes are bendable and commonly have a "bulb".

Copper



Brown colored pipe that can be easily scratched with a coin or key. Scratching leaves a copper color. Magnets WILL NOT stick to copper pipes.

Galvanized Iron/Steel



A dull, silver colored pipe that is hard to scratch with a coin or key. Scratching leaves a dull gray color. A magnet WILL stick to a galvanized iron/steel pipe.

Plastic

Generally, black, white, or blue piping. Plastic piping is rigid. A magnet WILL NOT stick to plastic pipe. The color of plastic does NOT indicate the type of plastic. To identify the type of plastic your service line is made of, look for the printed markings on the side of the pipe.

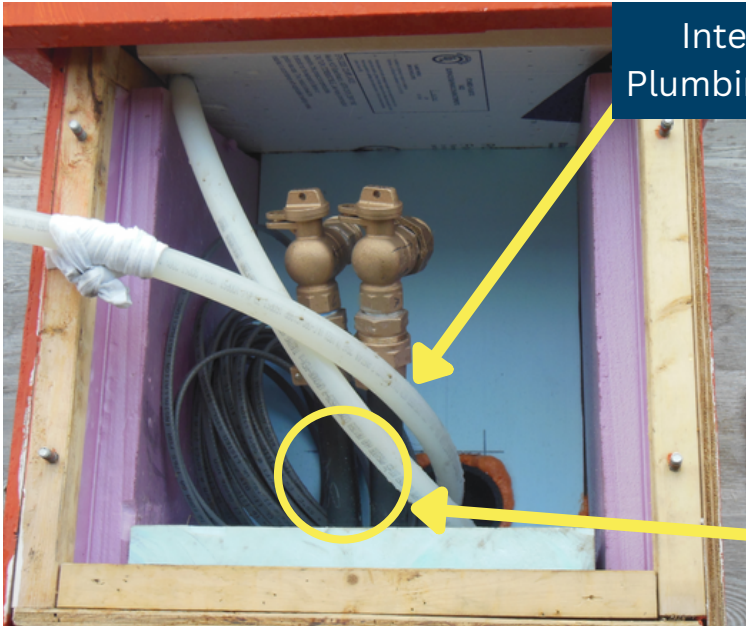


3

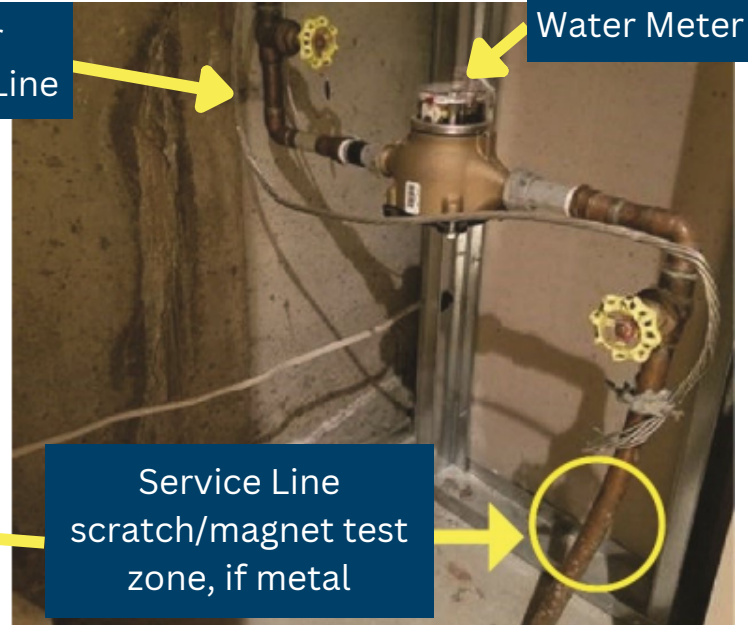
Take a Photo

Take a few photos of your service line, where it enters your building. The photos should:

- Be well lit.
- Show the area where you did the scratch and/or magnet test.
- Show your shut off valve and water meter, if you have one.



Interior Plumbing Line



Water Meter

Service Line scratch/magnet test zone, if metal

Photo of Service Line within an Arctic Box

Photo of Service Line within a Basement

4

Inspect Your Interior Plumbing

Interior plumbing (AKA premise plumbing) refers to the pipes and fixtures on the interior of your home or building. This means the pipes supplying water to the sinks, showers, water heaters, pressure tanks, refrigerators, or other fixtures in your building. Interior plumbing is largely found in the walls of your building. To identify the material, you must find exposed sections of pipe. You can commonly find exposed sections of pipe by your pressure tank, water heater, or under your sink.



Copper



Steel



Plastic-PVC



Plastic-HDPE



Plastic-PEX

The color of plastic pipe is NOT an indicator of the type of plastic it is made of. The best way to identify plastic pipe is by the printed markings on the side of the pipe.

5

Submit Your Findings

The _____ public water system has opted to use the **Lead-Safe Alaska Portal** to document your findings. To submit your information, follow these steps:



1. Scan the QR Code with your phone, or go to <https://arcg.is/OWfOjb> to reach the customer survey.
2. Enter your utility's public water system ID (PWSID). The PWSID for your utility is:

A K 2 _ _ _ _ _

3. Enter your information into the survey form.
4. Select whether you are filling the form out with Service Line Information, Interior Plumbing Information, or Both.
5. Fill out the remaining fields and attach the photos you took of your service line and/or interior plumbing.
6. Click Submit.

Congratulations, you have finished submitting your information to your utility! Now, your utility will review the information you provided and reach out to you directly if they have any questions. Thank you for doing your part to keep Alaska's drinking water safe!

For More Information

Alaska Drinking Water Program Guidance: <https://dec.alaska.gov/eh/dw/lcrr>

EPA LCRR Guidance: <https://www.epa.gov/ground-water-and-drinking-water/revised-lead-and-copper-rule>

LSLR Collaborative Guidance: <https://www.lslr-collaborative.org/identifying-service-line-material.html>