

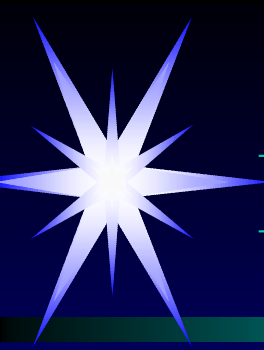
Geographic Response Strategies for Southeast Alaska





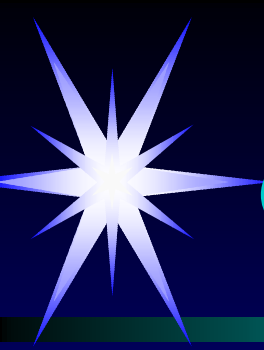
What is GRS?

- Site-specific response plans
- Tailored to protect sensitive areas
- Map-based strategies
- Saves time
- Conserves limited resources



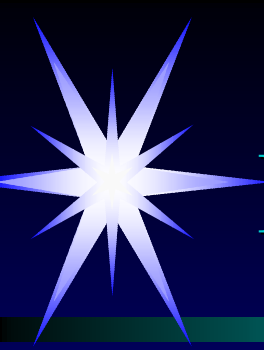
Project Objectives

- ▶ Identify 60 highly sensitive sites in southeast Alaska
- ▶ Develop strategies for each unique site
- ▶ Test as many sites as time and resources allow



GRS for Southeast Alaska

Funded through a \$250,000 court settlement paid to the state by Royal Caribbean Cruise Lines as the result of cruise ship pollution that occurred during the summer of 1999.



How Are Sites Selected?

Environmental sensitivity

Probability of oil spill impact

Ability to provide protection

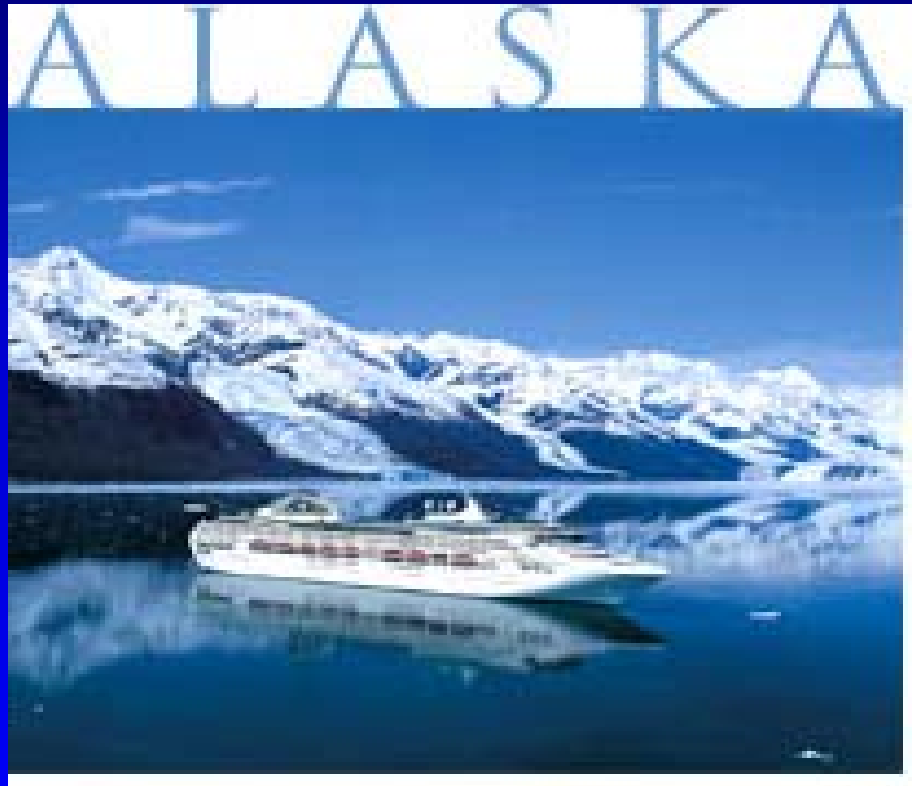


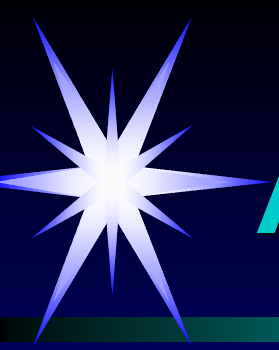
Environmental Sensitivity

- Human use (ex. Salmon hatcheries)
- Fish & wildlife
- Geographic features (ex. Marsh areas)

Probability of Oil Spill Impact

Along cruise ship routes

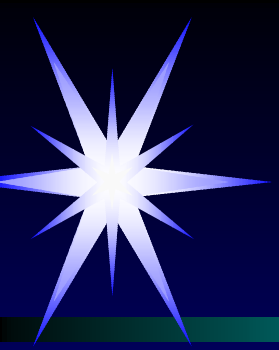




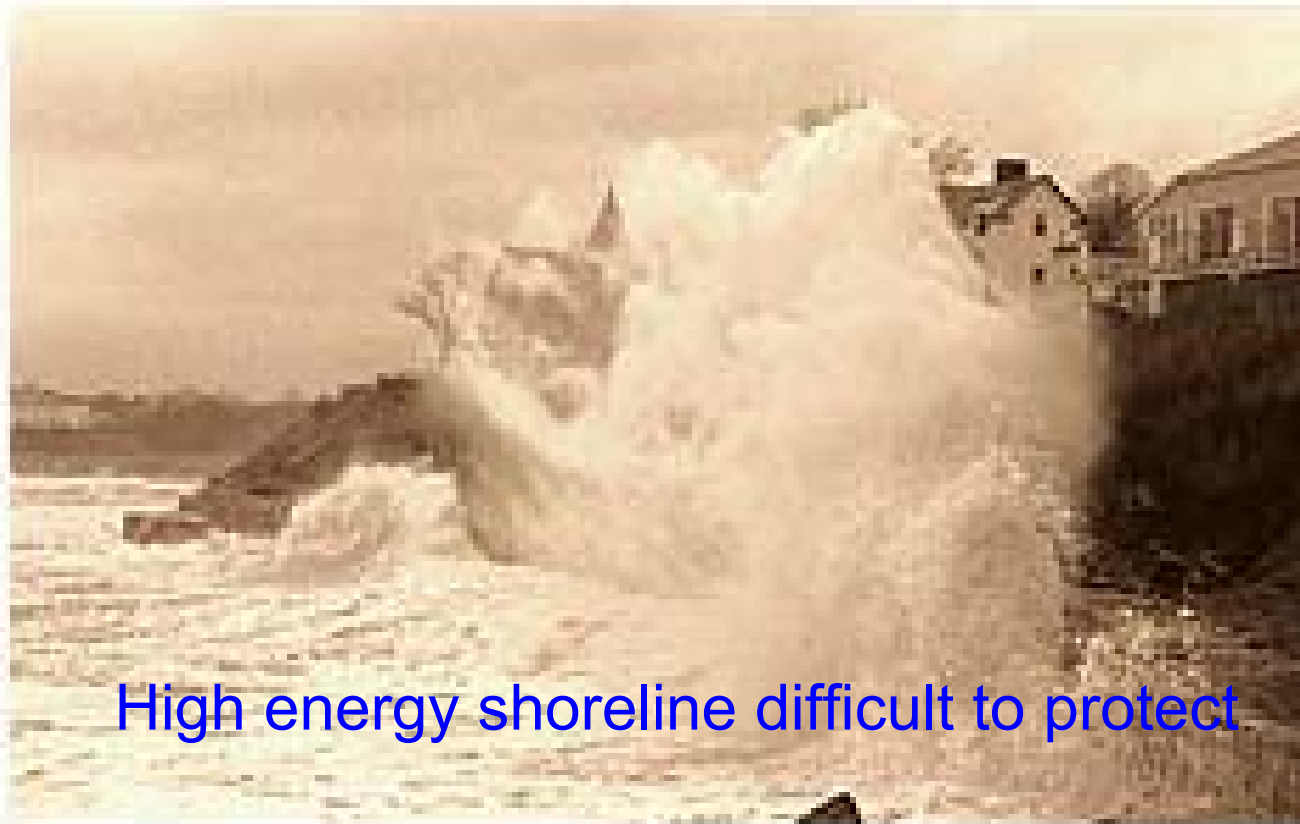
Ability to Provide Protection



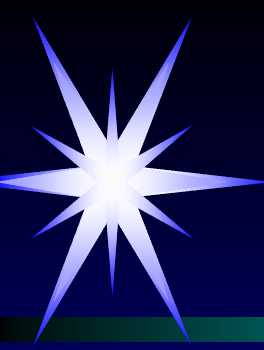
**Low energy shoreline eases deployment
of protective equipment**



Ability to Provide Protection



High energy shoreline difficult to protect



GRS Map Format

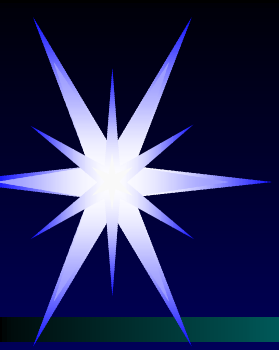
11 x 17 for responders

Color Maps and Photos

Expandable at later date

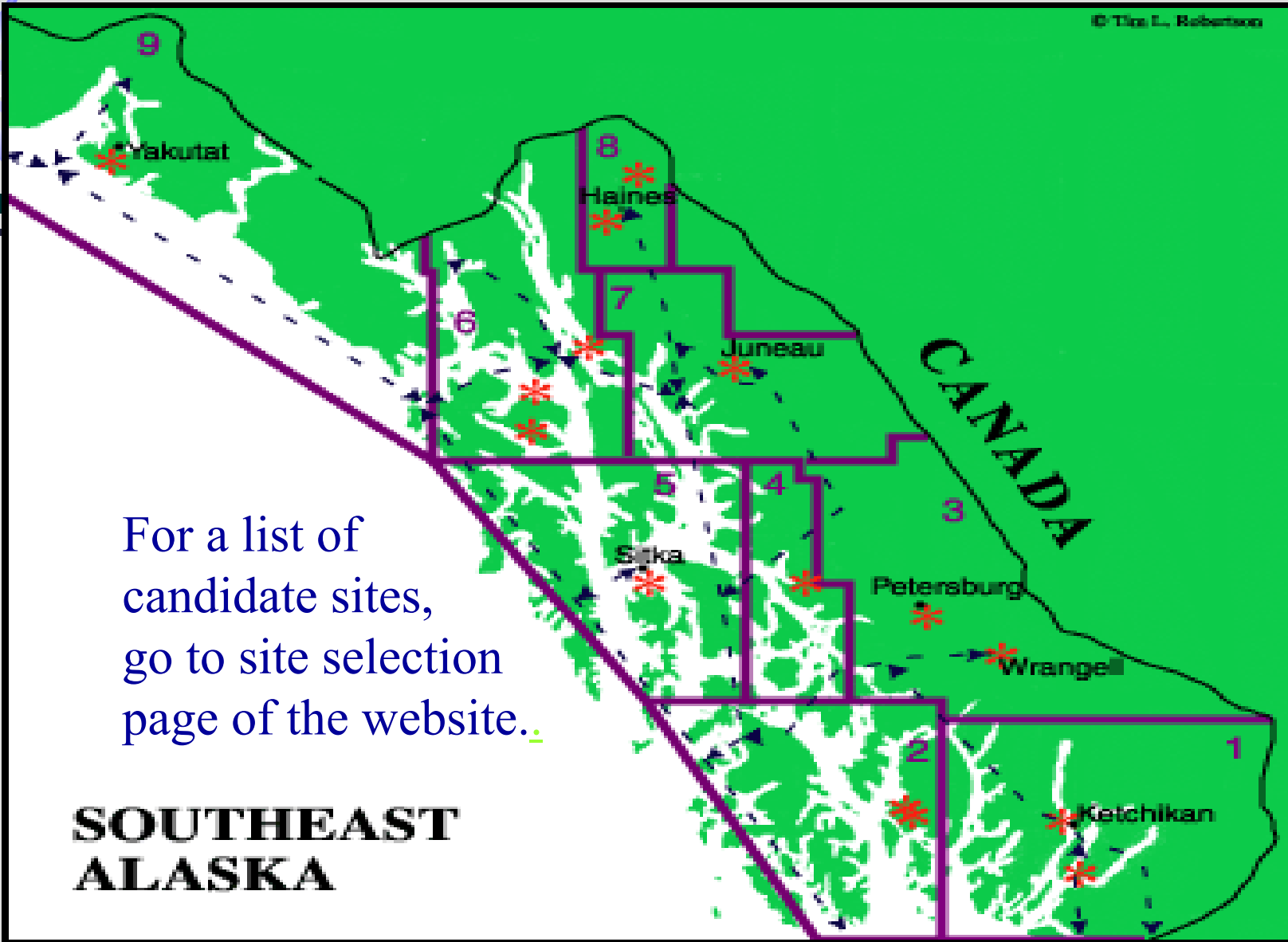
One page (both sides) per site

Bullet presentation of information



Site Selection

- GRS cannot be developed for all 13,000 mile of Southeast Alaska shoreline!
- Public input is needed for site selection.



For a list of candidate sites, go to site selection page of the website.

SOUTHEAST ALASKA