



Alaska Department of Environmental Conservation Alaska Department of Environmental Conservation  
Division of Administrative Services  
Environmental Crimes Unit

# ADEC Environmental Enforcement





# Types of Enforcement

- ADEC may pursue
  - Administrative
  - Civil
  - Criminal





Alaska Department of Environmental Conservation

Division of Administrative Services  
Environmental Crimes Unit

# Administrative Enforcement

- Administrative Enforcement is taken by ADEC under its own authority, without involving a court process
  - The majority of ADEC's enforcement actions





Alaska Department of Environmental Conservation

Division of Administrative Services  
Environmental Crimes Unit

# Civil Judicial Enforcement

- Formal lawsuits filed in court against persons or entities that have failed to comply with statutory/regulatory requirements or with an administrative order
  - The court can assess a penalty or issue a court order-an injunction-to require compliance





- Usually reserved for the most serious violations that are willful or knowingly committed
  - Court conviction can result in the imposition of fines and/or imprisonment
    - Misdemeanors – Indv--1 yr jail and/or \$10K fine, up to 5 yrs probation; Co--\$500K fine, or 3x times pecuniary gain
    - Felonies – Indv--no jail to life in prison w/o parole, \$5K fine an up; Co--max fines can easily approach \$1M





Alaska Department of Environmental Conservation  
Division of Administrative Services  
Environmental Crimes Unit

# Environmental Crimes Unit



Investigates most significant and egregious violations of environmental laws that pose the greatest threat to human health and the environment





Alaska Department of Environmental Conservation

Division of Administrative Services  
Environmental Crimes Unit

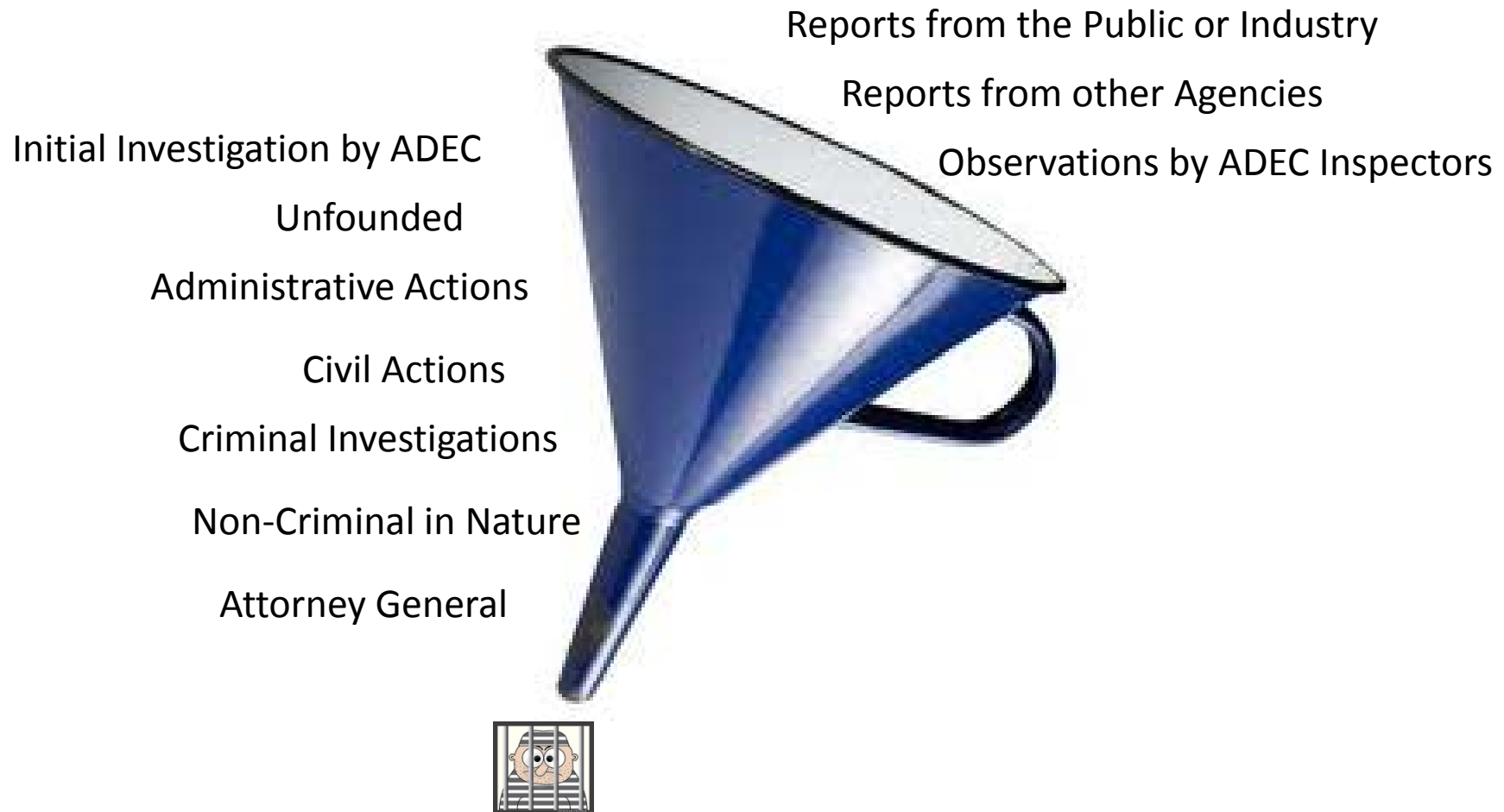
# Enforcement Team

- Inspector/Enforcement Officers
- Program managers
- Technical experts
- Law enforcement
  - Investigators
  - Police
- Attorneys

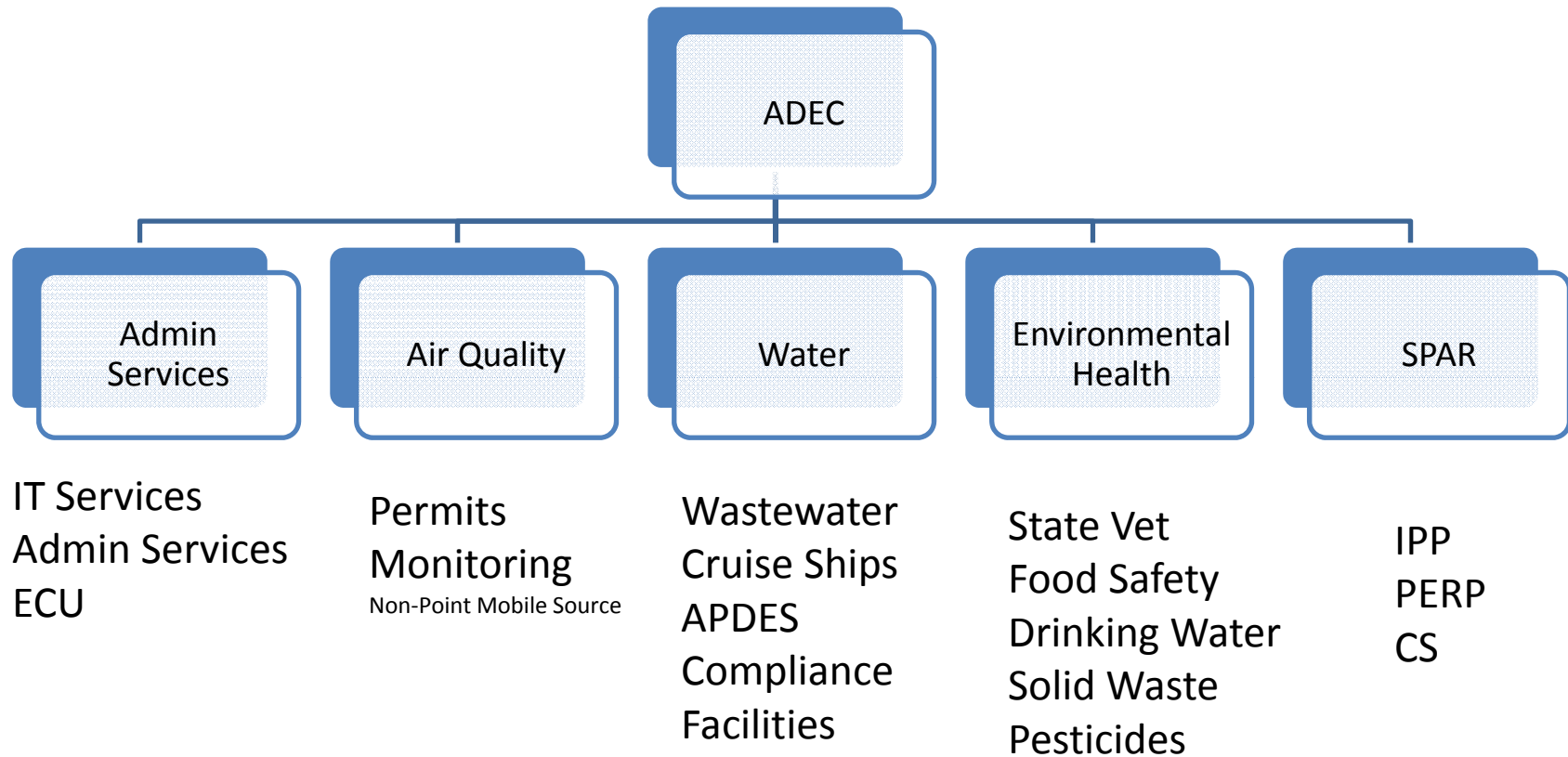




# The Enforcement Funnel









Alaska Department of Environmental Conservation

Division of Administrative Services  
Environmental Crimes Unit

# How You Fit into the Picture

The emissaries for the environment in your communities or organizations.

Eye Witnesses





Alaska Department of Environmental Conservation

Division of Administrative Services  
Environmental Crimes Unit

# Environmental Crimes Unit



Chief Investigator Mike Charland

907-269-7567

Investigator Parrish Moses

907-451-5157

ADEC Website

<http://dec.alaska.gov/>

